

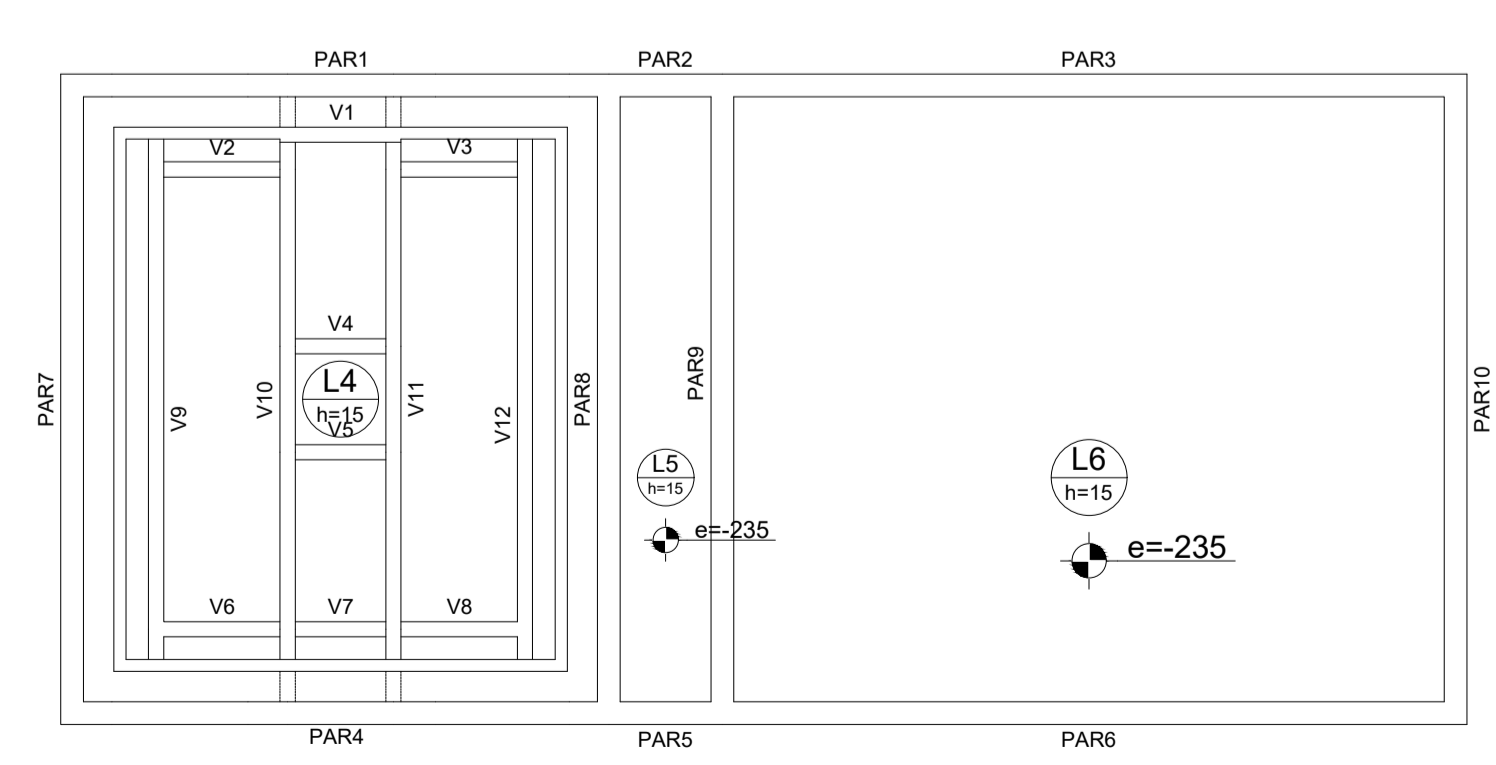
Relação do aço

ELEMENTO	AÇO	N	DIAM	Q	UNIT (cm)	C.TOTAL (cm)
C1	CA60	1	5.0	14	296	4144
	CA50	2	8.0	16	426	6816
	CA50	3	10.0	16	474	474
C2	CA50	4	10.0	2	481	962
	CA50	5	12.5	2	426	852
	CA60	6	5.0	14	296	4144
	CA50	7	8.0	16	426	6816
	CA50	8	10.0	1	474	474
V1	CA50	9	10.0	2	481	962
	CA50	10	12.5	2	426	852
	CA60	11	5.0	2	208	416
	CA50	12	6.3	10	76	760
	CA50	13	10.0	2	95	190
V2	CA50	14	10.0	2	133	266
	CA60	15	5.0	6	76	456
	CA50	16	8.0	2	109	218
V3	CA50	17	8.0	2	127	254
	CA60	18	5.0	6	76	456
	CA50	19	8.0	2	109	218
V4	CA50	20	8.0	2	127	254
	CA60	21	5.0	2	208	416
	CA50	22	8.3	10	76	760
V5	CA50	23	10.0	2	95	190
	CA50	24	10.0	2	133	266
	CA60	25	5.0	2	208	416
V6	CA50	26	6.3	10	76	760
	CA50	27	10.0	2	95	190
	CA50	28	10.0	2	133	266
V7	CA60	29	5.0	6	76	456
	CA50	30	8.0	2	109	218
	CA50	31	8.0	2	127	254
V8	CA60	32	5.0	2	208	416
	CA50	33	6.3	10	76	760
	CA50	34	10.0	2	95	190
V9	CA50	35	10.0	2	133	266
	CA60	36	5.0	6	76	456
	CA50	37	8.0	2	109	218
V10	CA50	38	8.0	2	127	254
	CA60	39	5.0	2	224	448
	CA60	40	5.0	21	76	1596
V11	CA50	41	8.0	2	330	660
	CA50	42	8.0	4	87	348
	CA60	43	5.0	2	356	712
	CA60	44	5.0	2	96	192
	CA60	45	5.0	12	268	3216
	CA50	46	6.3	14	356	4984
	CA50	47	8.0	2	83	166
	CA50	48	8.0	2	80	160
	CA50	49	8.0	2	87	174
	CA50	50	8.0	2	92	184
	CA50	51	12.5	2	426	852
	CA60	52	5.0	2	356	712
V12	CA60	53	5.0	2	96	192
	CA60	54	5.0	12	268	3216
	CA50	55	6.3	14	356	4984
	CA50	56	8.0	2	83	166
	CA50	57	8.0	2	88	176
	CA50	58	8.0	2	87	174
	CA50	59	8.0	2	92	184
	CA50	60	12.5	2	426	852
	CA60	61	5.0	2	224	448
	CA60	62	5.0	21	76	1596
	CA50	63	8.0	2	330	660
	CA50	64	8.0	4	87	348

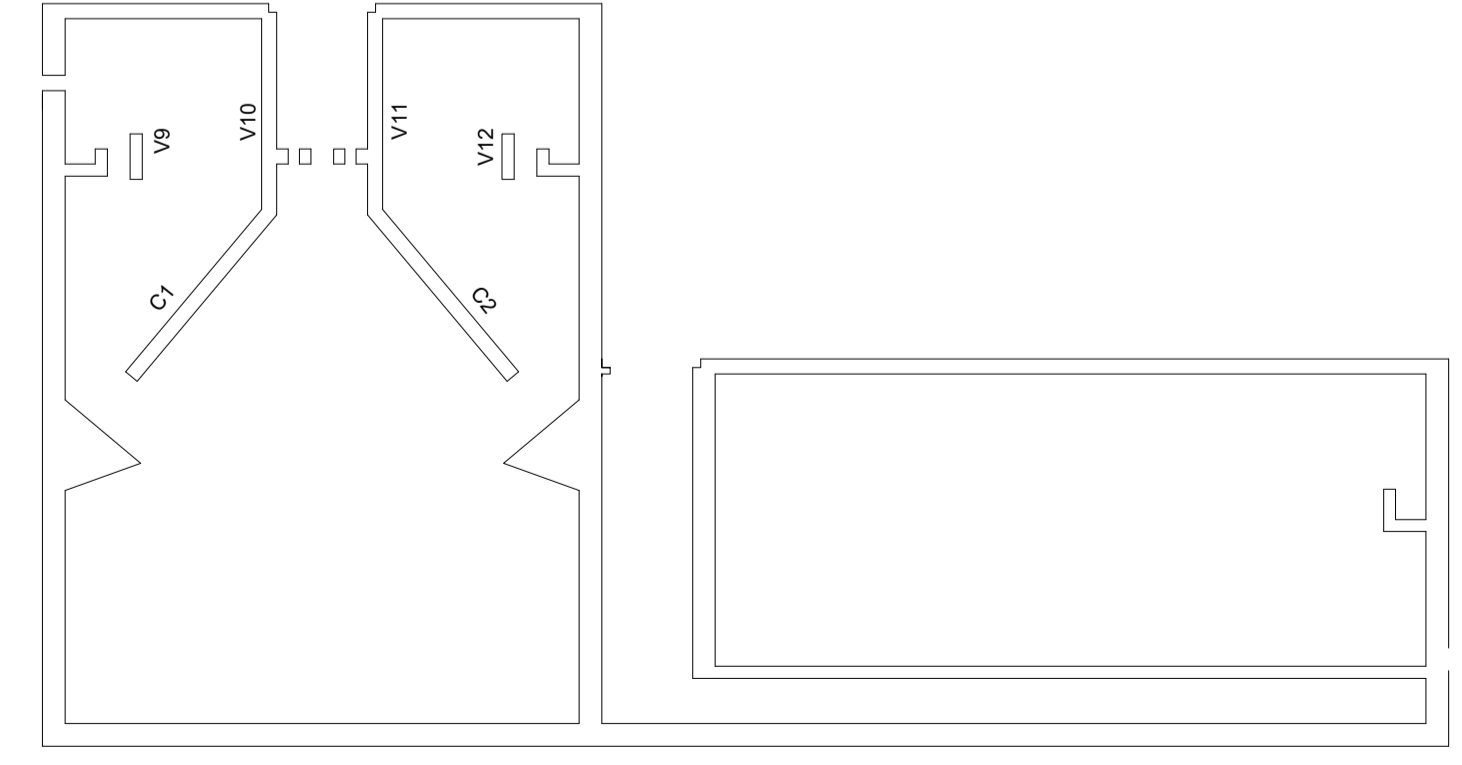
Resumo do aço

AÇO	DIAM	C.TOTAL (m)	PESO + 10% (kg)
CA50	6.3	130.1	35
CA50	8.0	189.2	82.1
CA50	10.0	47	31.8
CA50	12.5	34.1	38.1
CA60	5.0	241.1	40.9
PESO TOTAL			
CA50		185.1	
CA60		40.9	

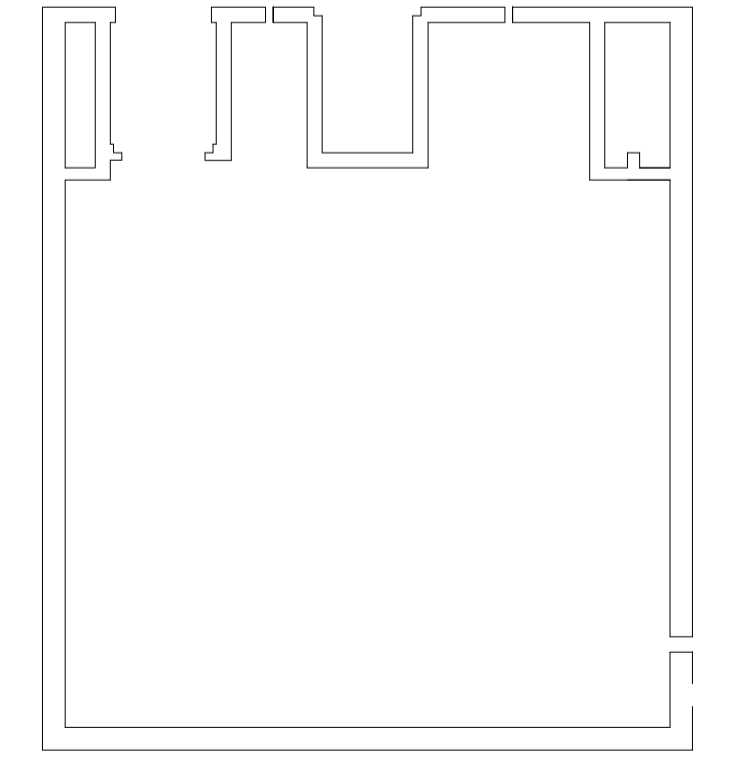
Vol. de concreto total (C-30) = 2.78 m³
 Área de forma total = 58.75 m²



Forma
escala 1:50



Corte AA
escala 1:50



Corte BB
escala 1:50

CÁLCULO ESTRUTURAL

PROPRIETÁRIO: **PMS**
 OBRA/LOCAL: **ETE**

PROJETO: _____ REVISÕES: _____ CONTEÚDO: _____ PRANCHAS Nº: **05/12**
 I - VIGAS
 DATA: FEV/2013