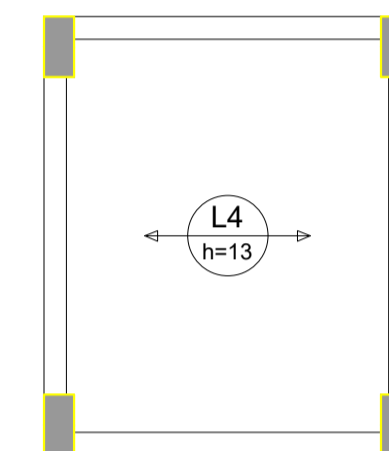
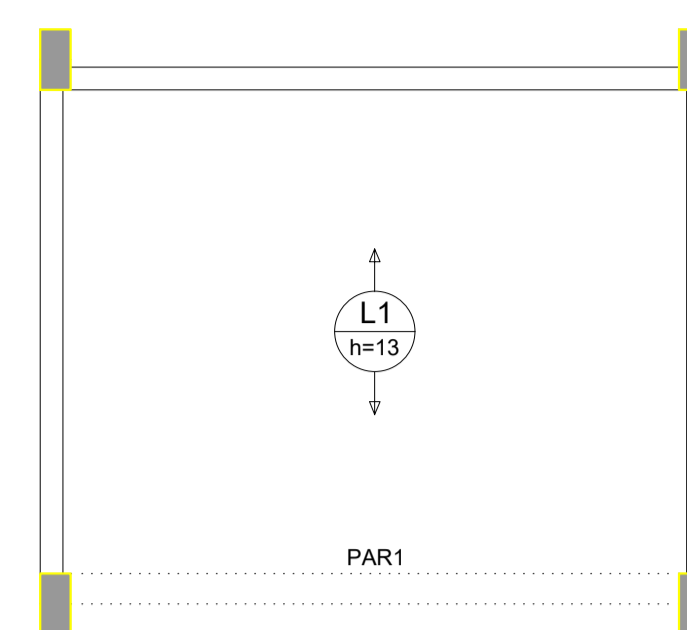


Planta de vigotas pré-moldadas  
escala 1:50



Armação positiva das lajes do pavimento FUNDO CAIXA (Eixo Y)  
escala 1:50

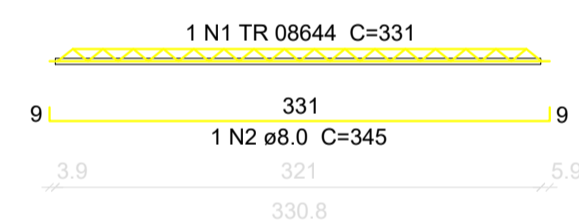
Relação do aço

ELEMENTO	AÇO	N	DIAM (mm)	QUANT	C.UNIT (cm)	C.TOTAL (cm)
11xVT1a	CA60	1	TR 08644	11	331	3641
	CA50	2	8,0	11	345	3795
2xVT4a	CA60	3	TR 08644	2	215	430
	CA60	4	5,0	2	225	450
5xVT4b	CA60	5	TR 08644	5	225	1125
	CA60	6	5,0	5	235	1175

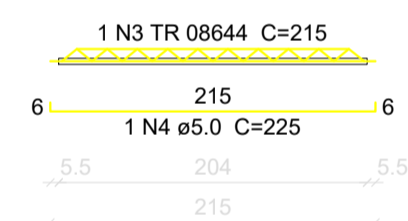
Resumo do aço

AÇO	DIAM (mm)	C.TOTAL (m)	PESO (kg)
CA50	8,0	38	15
CA60	TR 08644	52	38,2
	5,0	16,3	2,5
PESO TOTAL (kg)			
CA50		15	
CA60		40,7	

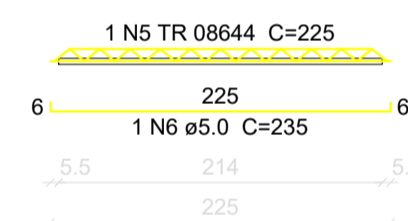
VT1a (11 unidades)  
(L1)  
ESC 1:50



VT4a (2 unidades)  
(L4)  
ESC 1:50



VT4b (5 unidades)  
(L4)  
ESC 1:50



A & V PROJETOS DE ENGENHARIA

PROJETO: **PROJETO ESTRUTURAL HOSPITAL DR ESTEVAM**

INTERESSADO: **PREFEITURA DE SOBRAL**

ENDEREÇO: **-**

MUNICÍPIO: **SOBRAL-CE**

DESENHOS DA PRANCHA	ESCALA
DET. LAJES FUNDO CAIXA	INDICADA
_____	_____
_____	_____
_____	_____