

Planta de vigas pré-moldadas

escala 1:50

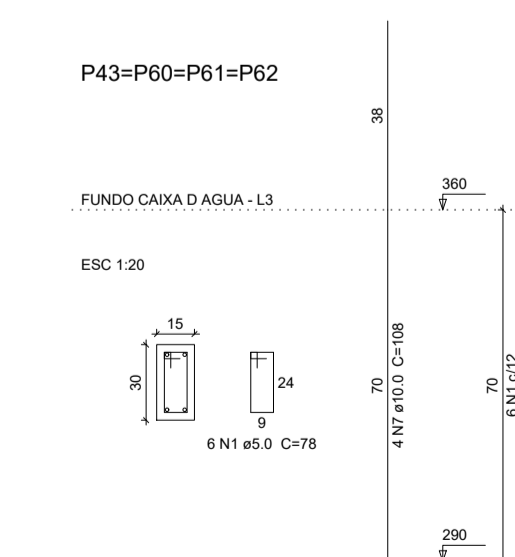
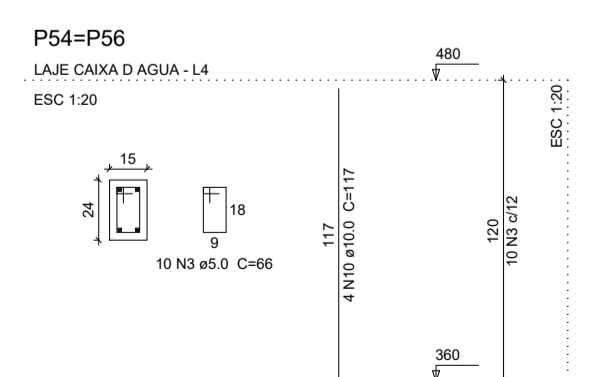
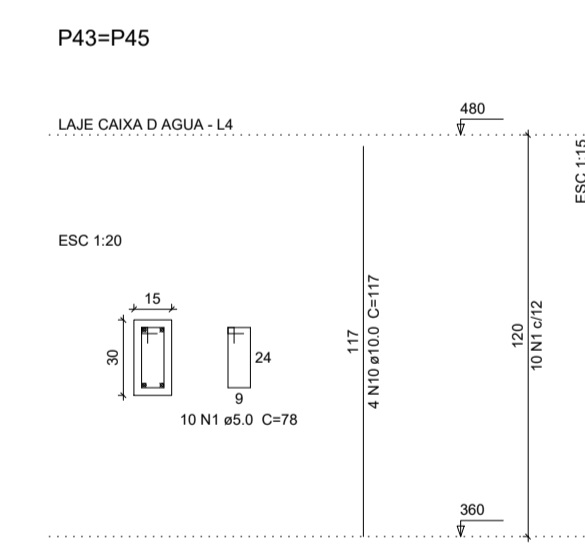
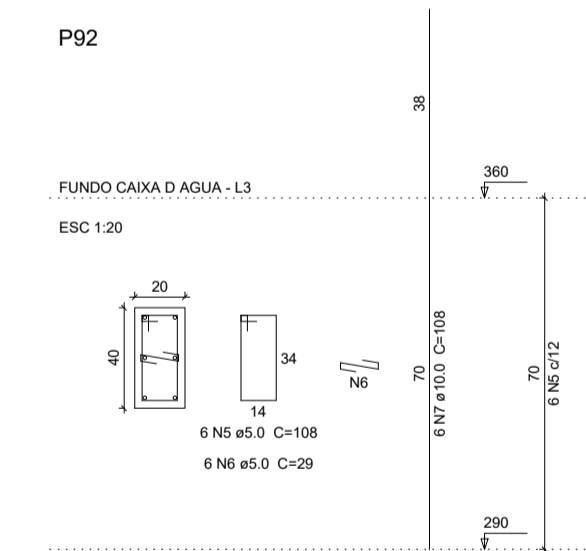
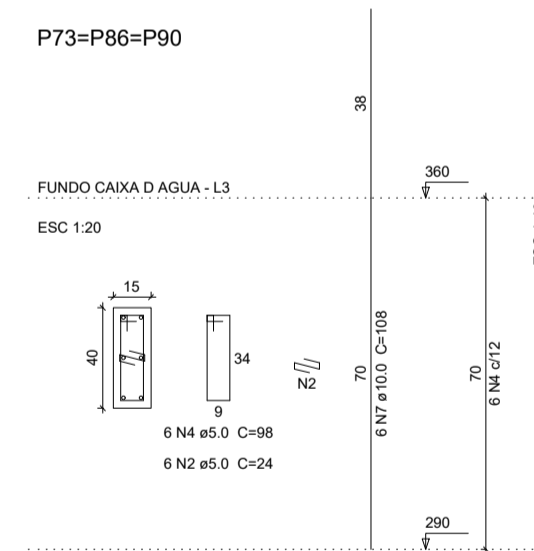
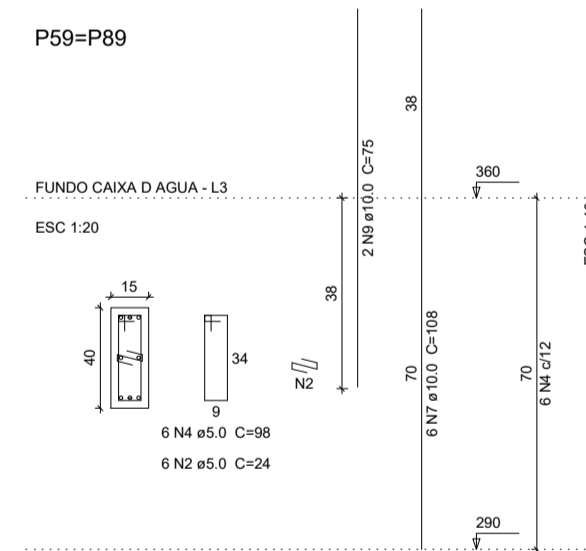
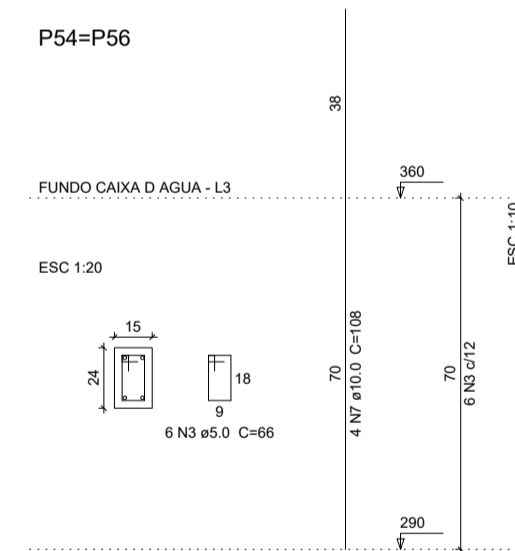
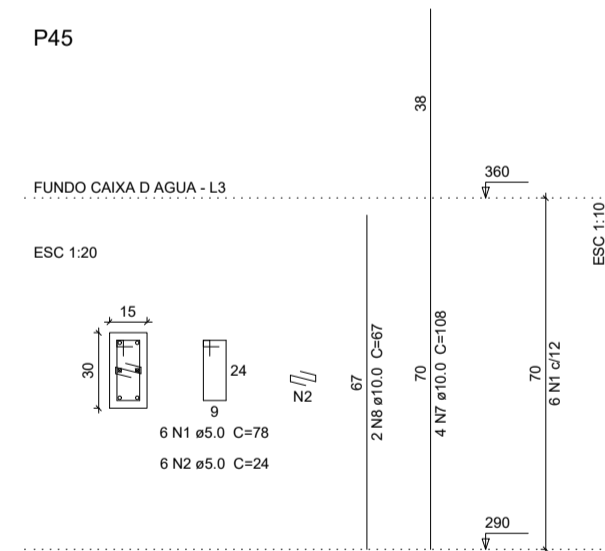
**Relação do aço**

CAIXA	N	DIAM	Q	UNIT	C TOTAL	PESO
		(cm)		(cm)		(kg)
FUNDO CAIXA D. 488M4	1	5.0	50	79	3900	664
	2	5.0	36	24	2112	384
	3	5.0	32	85	2720	480
	4	5.0	30	98	2940	528
	5	5.0	6	108	540	96
LAJE CAIXA D. 488M43	6	5.0	6	29	145	26
	7	10.0	64	109	5472	984
	8	10.0	2	87	435	78
	9	10.0	4	75	375	67
	10	10.0	16	117	5877	1056

**Resumo do aço**

CAIXA	DIAM	C TOTAL	PESO
	(cm)		(kg)
CAIXA	10.0	92.2	56.8
CAIXA	5.0	109.4	19.4
<b>PESO TOTAL</b>			<b>76.2</b>

Vol. de concreto total (C-25) = 0.67 m³  
 Área de forma total = 12.96 m²



SECOMP - SECRETARIA DE OBRAS, MOBILIDADE E SERVIÇOS PÚBLICOS

PROJETO: CSF - CAMPO DOS VELHOS  
 PROJETO ESTRUTURAL

INTERESSADO: PREFEITURA DE SOBRAL

ALTO: ENG. CARLOS EDUARDO BRATZ  
 CREA - 321948

ENDEREÇO: BARRIO CAMPO DOS VELHOS

MUNICÍPIO: SOBRAL-CE

**PREFEITURA DE SOBRAL**

PLANTA DE VIGAS.PAV TIPO INDICADA

PILARES FUNDO CAIXA D' AGUA INDICADA

DATA: MAIO/2019

REVISÃO: ARQUIVO

PRCHA: 12/22

ORÇ. PLAN  
 1 15.10  
 2 15.10  
 3 15.10  
 4 15.10  
 5 15.10  
 6 15.10  
 7 15.10  
 8 15.10  
 9 15.10  
 10 15.10