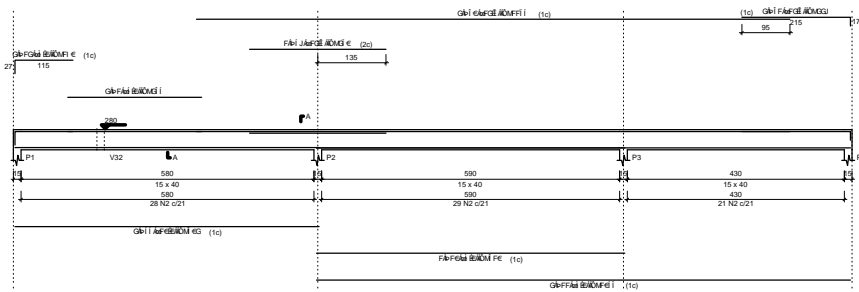


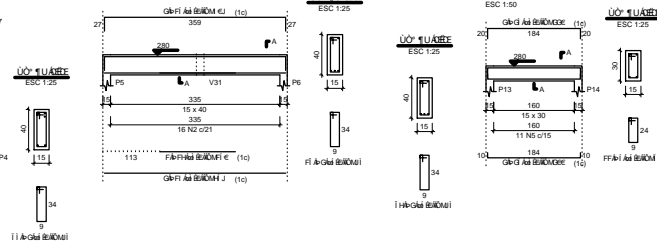
V1

ESC 1:50



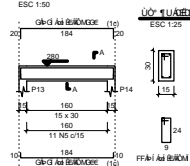
V2

ESC 1:50



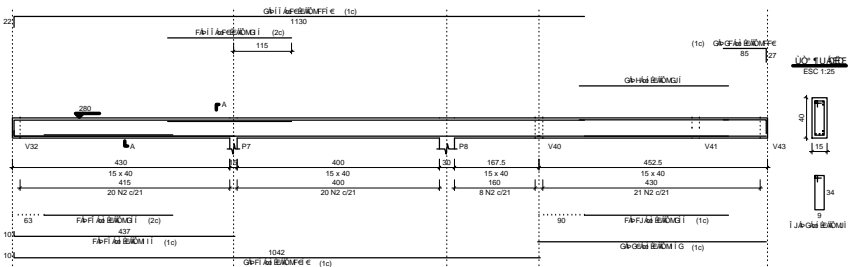
V5

ESC 1:50



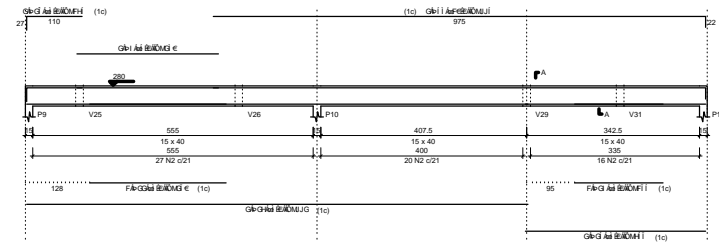
V3

ESC 1:50



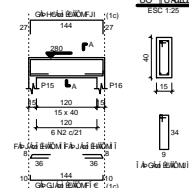
V4

ESC 1:50



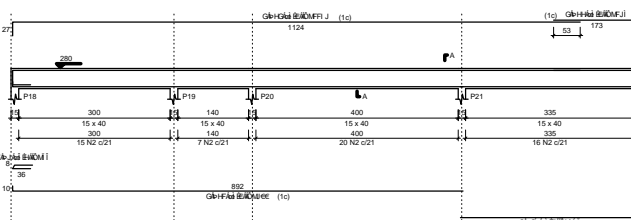
V6

ESC 1:50



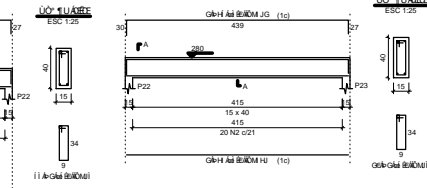
V7

ESC 1:50



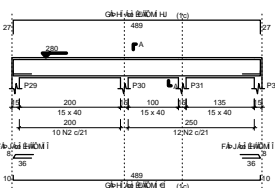
V8

ESC 1:50



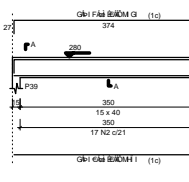
V9

ESC 1:50



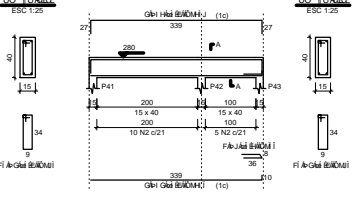
V11

ESC 1:50



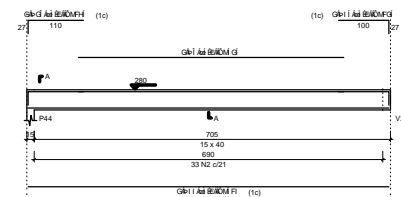
V12

ESC 1:50



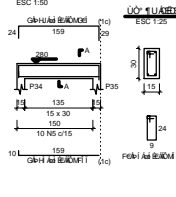
V13

ESC 1:50



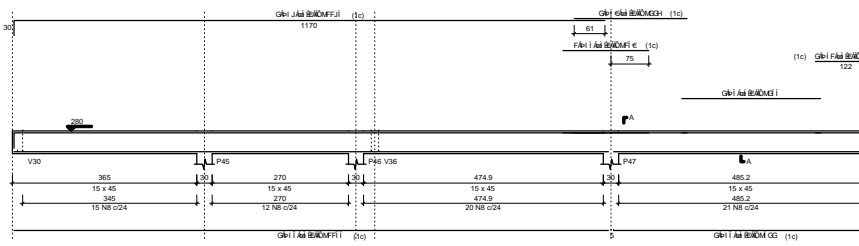
V10

ESC 1:50



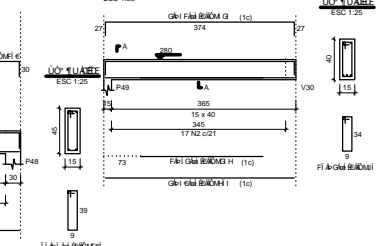
V14

ESC 1:50



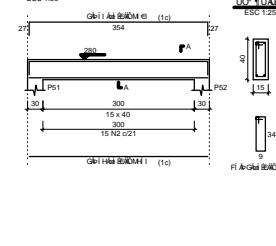
V15

ESC 1:50



V16

ESC 1:50



Q' u' l' u' a' b' e' / A' / A' b' e' /

Q' U	N	DIAM	Q	UNID	C. TOTAL (cm)
CASO	1	5.0	2	265	530
	2	5.0	429	58	42042
	3	5.0	2	295	590
	4	5.0	2	280	560
	5	5.0	21	75	1638
	6	5.0	2	525	1050
	7	5.0	2	275	550
	8	5.0	68	108	744
CASO	9	6.3	6	76	456
	10	6.3	6	610	510
	11	6.0	2	1057	2114
	12	6.0	2	140	280
	13	6.0	1	150	150
	14	6.0	2	359	718
	15	6.0	2	409	818
	16	6.0	1	255	255
	17	6.0	1	445	445
	18	6.0	2	1050	2100
	19	6.0	1	285	285
	20	6.0	4	452	1808
	21	6.0	2	110	220
	22	6.0	1	270	270
	23	6.0	2	952	1904
	24	6.0	1	175	175
	25	6.0	2	357	714
	26	6.0	4	135	540
	27	6.0	2	200	400
	28	6.0	2	220	440
	29	6.0	2	160	320
	30	6.0	2	194	388
	31	6.0	2	800	1600
	32	6.0	2	1149	2298
	33	6.0	2	198	396
	34	6.0	2	439	878
	35	6.0	2	462	924
	36	6.0	2	606	1212
	37	6.0	2	539	1078
	38	6.0	2	187	374
	39	6.0	2	208	416
	40	6.0	4	374	1496
	41	6.0	4	424	1696
	42	6.0	2	347	694
	43	6.0	2	389	778
	44	6.0	2	714	1428
	45	6.0	2	125	250
	46	6.0	2	1177	2354
	47	6.0	2	522	1044
	48	6.0	1	170	170
	49	6.0	2	1198	2396
	50	6.0	2	223	446
	51	6.0	2	150	300
	52	6.0	1	243	243
	53	6.0	2	204	408
	54	6.0	2	602	1204
	55	10.0	1	245	245
	57	10.0	2	1150	2300
	58	10.0	2	995	1990
	59	12.5	1	270	270
	60	12.5	2	1175	2350
	61	12.5	2	229	458

Q' U	DIAM	C. TOTAL (cm)	PESO (kg)
CASO	6.3	4.6	1.1
	6.0	388.5	153.3
	10.0	57.4	35.4
	12.5	30.8	29.7
	5.0	543.1	83.7
CASO		219.4	
CASO		83.7	

X) (B-A) e Y) (B-A) e Z) (B-A) e W) (B-A)

TITULO CSF DE TAPERUABA, DISTRITO DO MUNICÍPIO DE SOBRAL/CE

PROJETO ESTRUTURAL-VIGAS

ENDEREÇO RUA EUFRAZINO BASTO, S/N, TAPERUABA - CE

PROPRIETÁRIO PREFEITURA MUNICIPAL DE SOBRAL

AUTOR DO PROJETO CARLOS EDUARDO BRATZ

RESPONSÁVEL TÉCNICO CARLOS EDUARDO BRATZ

CONTEUDO - VIGAS

PREFEITURA MUNICIPAL DE SOBRAL
Secretaria de Obras, Meio Ambiente e Serviços Públicos

DATA 09/05/2018 **ESCALA** INDICADA **DESENHO** CARLOS **FOLHA** 03/04

OBS: IMPRIMIR EM FOLHA A1