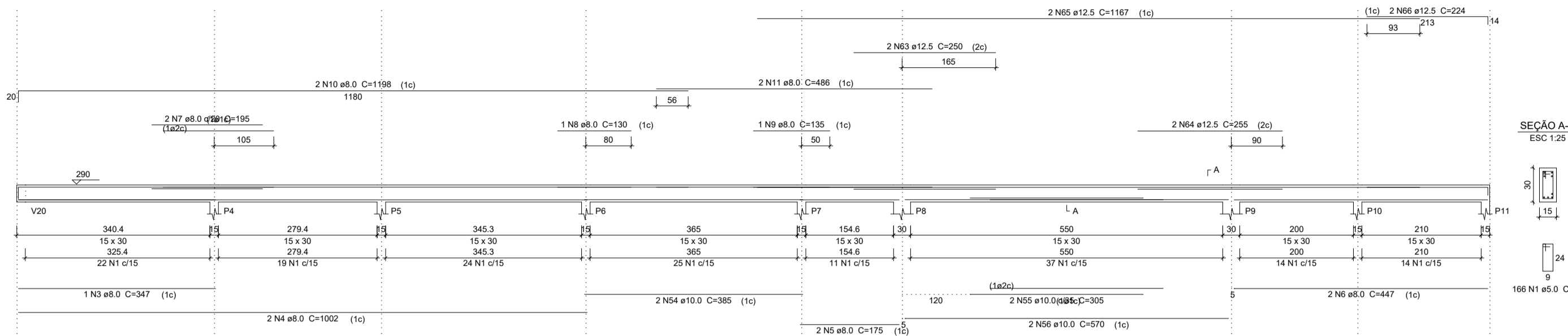
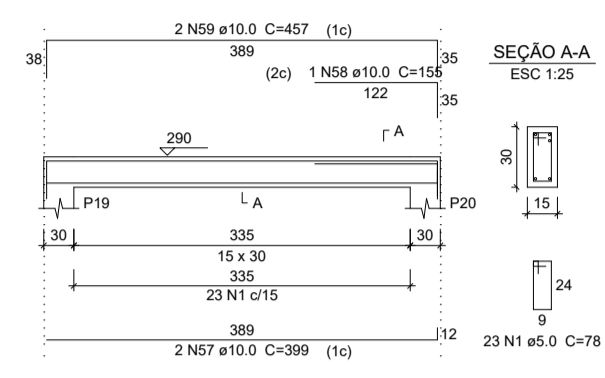


V2
ESC 1:50



V3
ESC 1:50



Relação do aço

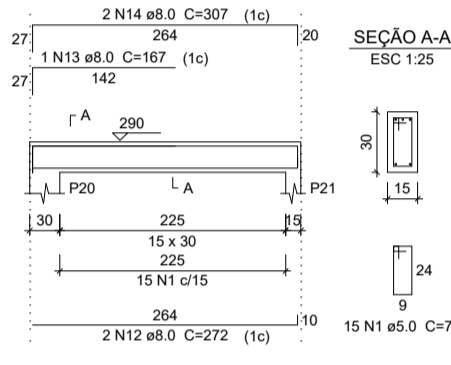
AÇO	N	DIAM	Q	UNIT	C.TOTAL
V2					
V3					
V4					
V5					
V6					
V7					
V8					
V9					
V10					
V12					
V13					
V14					
CABO	N	DIAM	Q	UNIT	C.TOTAL
CABO	1	5.0	716	76	56082
	2	5.0	166	68	11288
	3	8.0	1	347	347
	4	8.0	1	1002	2004
	5	8.0	5	175	875
	6	8.0	2	447	894
	7	8.0	2	195	390
	8	8.0	1	130	130
	9	8.0	2	135	270
	10	8.0	4	1198	4792
	11	8.0	2	486	972
	12	8.0	2	272	544
	13	8.0	2	167	334
	14	8.0	2	307	614
	15	8.0	2	385	770
	16	8.0	2	1194	2388
	17	8.0	2	1042	2084
	18	8.0	2	210	420
	19	8.0	3	200	600
	20	8.0	2	170	340
	21	8.0	2	1200	2400
	22	8.0	2	349	698
	23	8.0	1	388	388
	24	8.0	2	1192	2384
	25	8.0	1	195	195
	26	8.0	2	1082	2164
	27	8.0	2	195	390
	28	8.0	2	804	1608
	29	8.0	1	145	145
	30	8.0	2	850	1700
	31	8.0	2	850	1700
	32	8.0	4	804	3216
	33	8.0	1	158	158
	34	8.0	2	874	1748
	35	8.0	2	129	258
	36	8.0	2	133	266
	37	8.0	2	480	960
	38	8.0	1	97	97
	39	8.0	2	873	1746
	40	8.0	1	165	165
	41	8.0	2	802	1604
	42	8.0	2	422	844
	43	8.0	1	125	125
	44	8.0	1	155	155
	45	8.0	2	1124	2248
	46	8.0	2	195	390
	47	8.0	1	172	172
	48	8.0	2	458	916
	49	8.0	2	1120	2240
	50	8.0	2	732	1464
	51	8.0	1	148	148
	52	8.0	2	1168	2336
	53	8.0	2	738	1476
	54	10.0	2	385	770
	55	10.0	2	305	610
	56	10.0	2	570	1140
	57	10.0	2	369	738
	58	10.0	1	155	155
	59	10.0	2	457	914
	60	10.0	2	347	694
	61	10.0	2	424	848
	62	10.0	2	501	1002
	63	12.5	2	250	500
	64	12.5	2	255	510
	65	12.5	2	1187	2374
	66	12.5	2	224	448

Resumo do aço

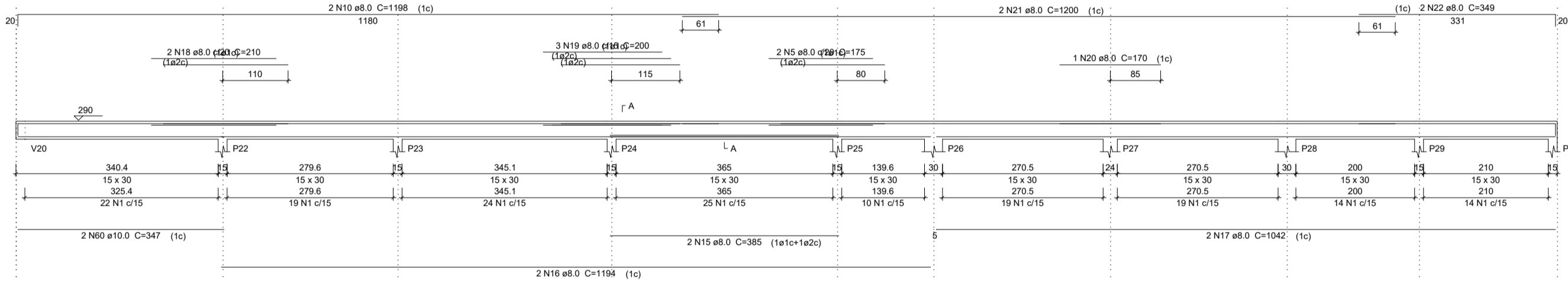
AÇO	DIAM	C.TOTAL	PESO
CABO	8.0	535	211.1
	10.0	69.4	42.7
	12.5	38	36.5
CABO	5.0	673.7	100.8
PESO TOTAL			
CABO		290.3	
CABO		103.8	

Vol. de concreto total (C-25) = 5.91 m³
Área de forma total = 99 m²

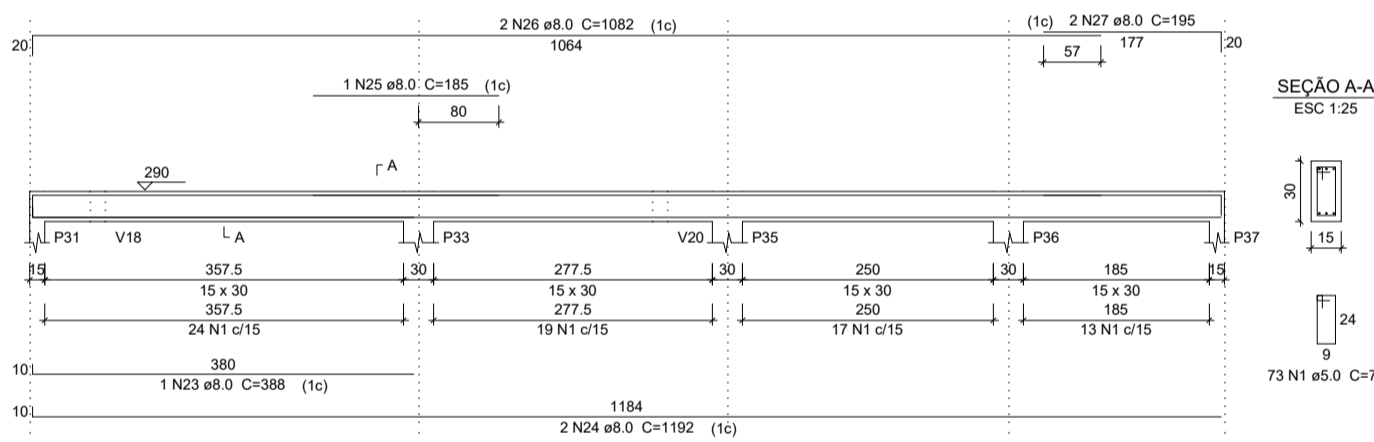
V4
ESC 1:50



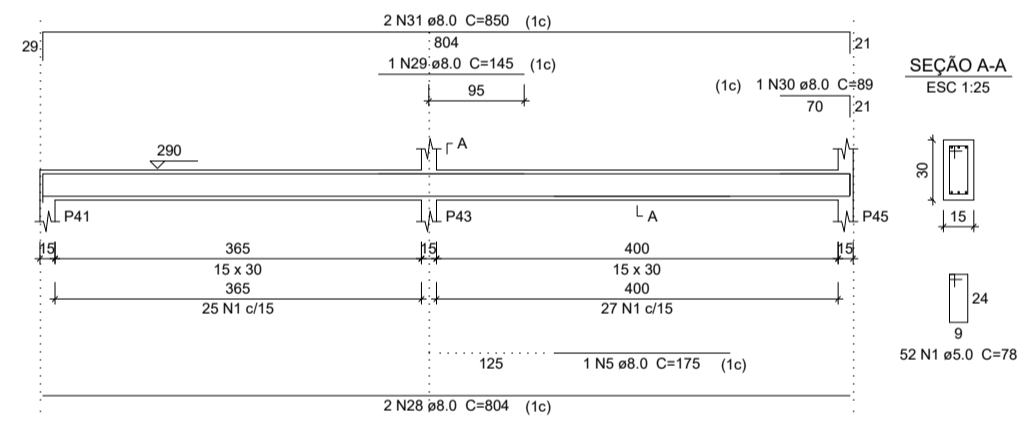
V5
ESC 1:50



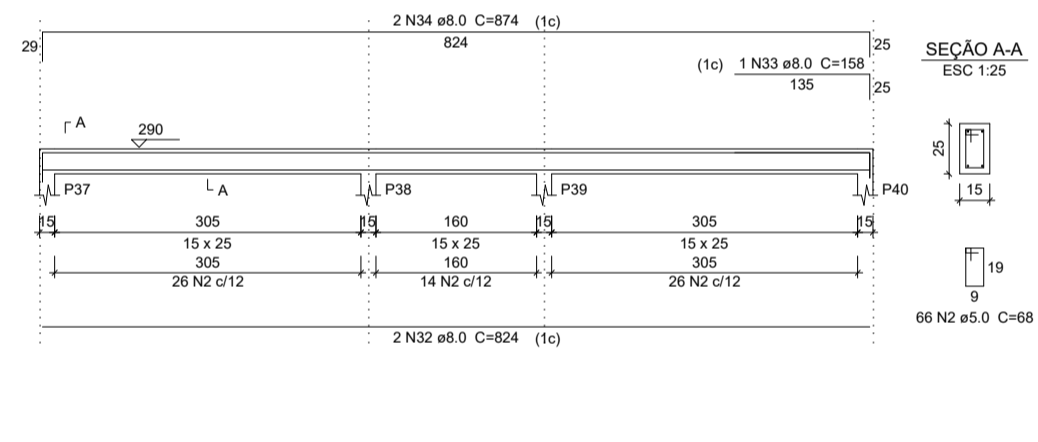
V6
ESC 1:50



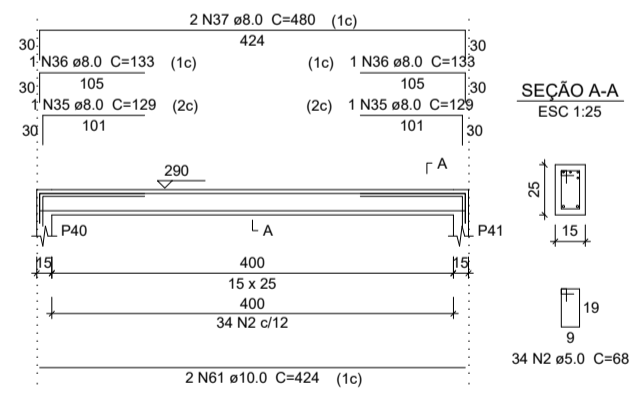
V7
ESC 1:50



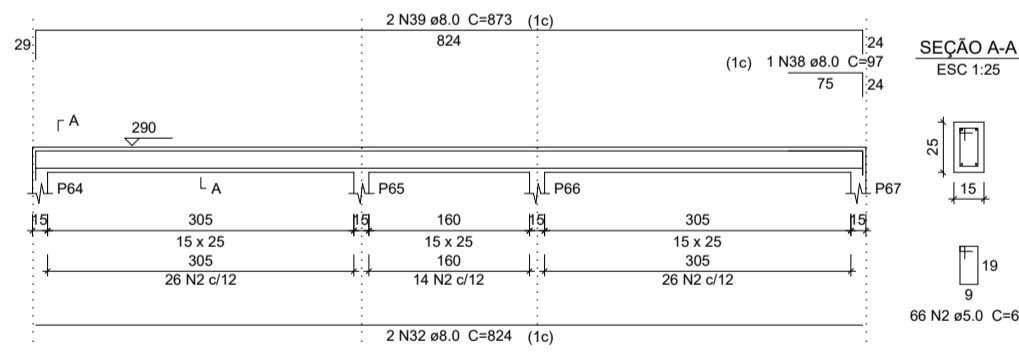
V8
ESC 1:50



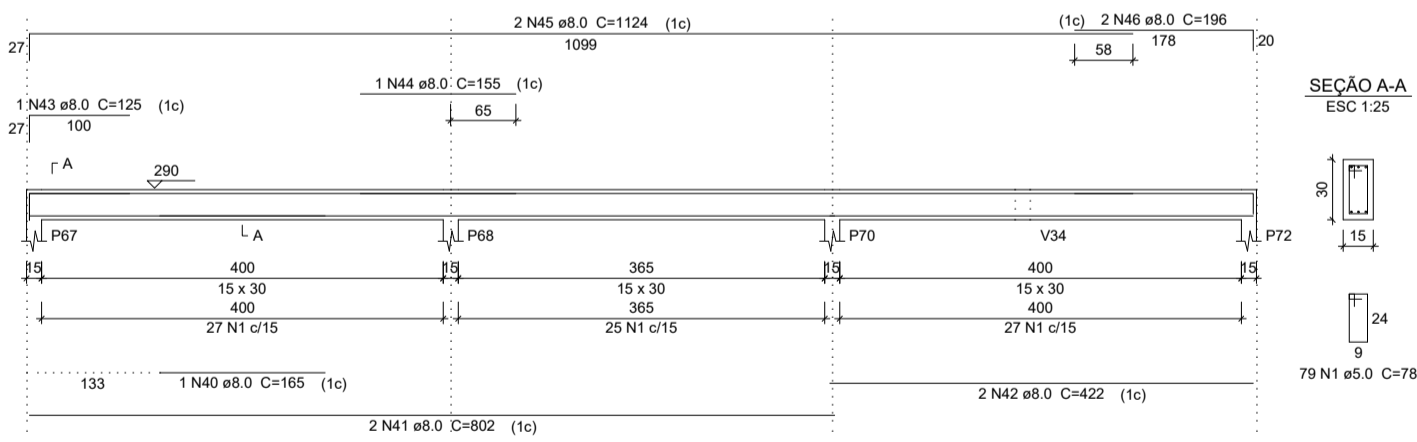
V9
ESC 1:50



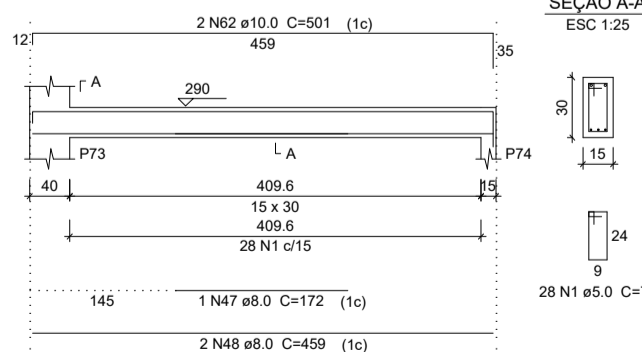
V10
ESC 1:50



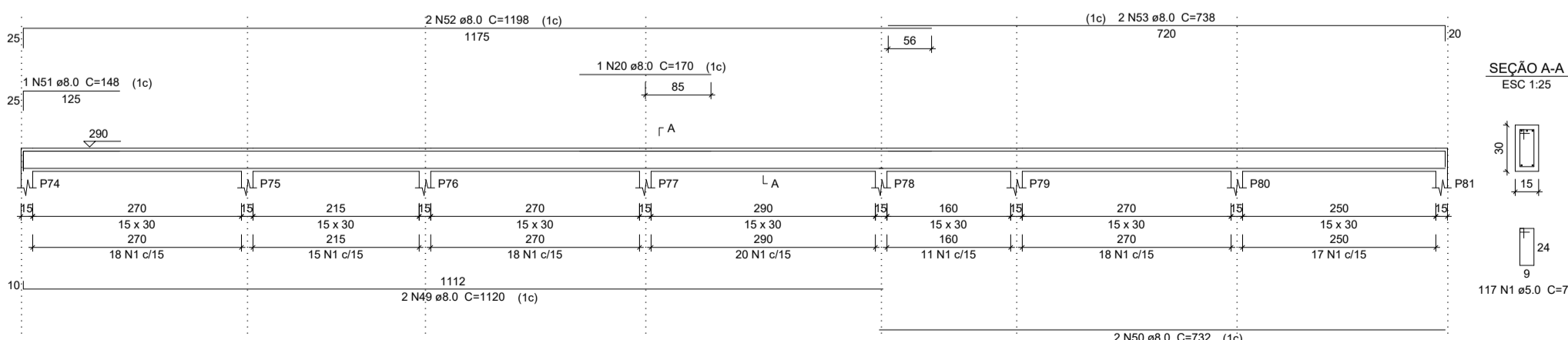
V12
ESC 1:50



V13
ESC 1:50



V14
ESC 1:50



SECOMP - SECRETARIA DE OBRAS, MOBILIDADE E SERVIÇOS PÚBLICOS

PROJETO: CSF- CAMPO DOS VELHOS
PROJETO ESTRUTURAL

INTERESSADO: PREFEITURA DE SOBRAL
ENDEREÇO: BARRIO CAMPO DOS VELHOS
MUNICÍPIO: SOBRAL-CE

AUTOR: ENG. CARLOS EDUARDO BRATZ
CREA - 321948

PREFEITURA DE SOBRAL

VIGAS PAVIMENTO TIPO _____ INDICADA _____

DATA: MAIO/2019 REVISÃO: _____ ARQUIVO: _____ PRACHA: 08/22

ORÇAMENTO
1 15.10
2 15.10
3 15.10
4 15.10
5 15.10
6 15.10
7 15.10
8 15.10
9 15.10
10 15.10
11 15.10
12 15.10