

Relação do aço

FUNDAÇÃO:	V55	V56	V57	V58	V59	V60	V61	V62
TIPO:	26/P1	P9	26/P1	P9	26/P1	P9	26/P1	P9
TIPO:	26/P1	P9	26/P1	P9	26/P1	P9	26/P1	P9
TIPO:	26/P1	P9	26/P1	P9	26/P1	P9	26/P1	P9
TIPO:	26/P1	P9	26/P1	P9	26/P1	P9	26/P1	P9

CA50	N	DIAM	Q	UNIT	C.TOTAL	PESO
CA50	1	5.0	801	58	34053	34053
CA50	2	5.0	1033	78	80674	80674
CA50	3	5.0	475	86	31850	31850
CA50	4	5.0	550	24	13200	13200
CA50	5	5.0	175	148	25900	25900
CA50	6	5.0	30	158	7050	7050
CA50	7	5.0	125	98	12250	12250
CA50	8	5.0	25	158	2700	2700
CA50	9	5.0	25	29	725	725
CA50	10	8.0	2	754	1508	1508
CA50	11	8.0	2	818	1636	1636
CA50	12	8.0	8	424	3392	3392
CA50	13	8.0	2	440	880	880
CA50	14	8.0	4	629	2516	2516
CA50	15	8.0	2	640	1280	1280
CA50	16	8.0	2	1044	2088	2088
CA50	17	8.0	2	1055	2110	2110
CA50	18	8.0	2	79	158	158
CA50	19	8.0	2	101	202	202
CA50	20	8.0	1	237	237	237
CA50	21	8.0	1	109	109	109
CA50	22	8.0	2	1052	2104	2104
CA50	23	8.0	2	622	1244	1244
CA50	24	8.0	2	1198	2396	2396
CA50	25	8.0	2	466	932	932
CA50	26	8.0	1	160	160	160
CA50	27	8.0	2	675	1350	1350
CA50	28	10.0	2	443	886	886
CA50	29	10.0	290	287	83230	83230
CA50	30	10.0	64	328	20992	20992
CA50	31	10.0	2	75	150	150
CA50	32	15.0	4	287	1148	1148

Resumo do aço

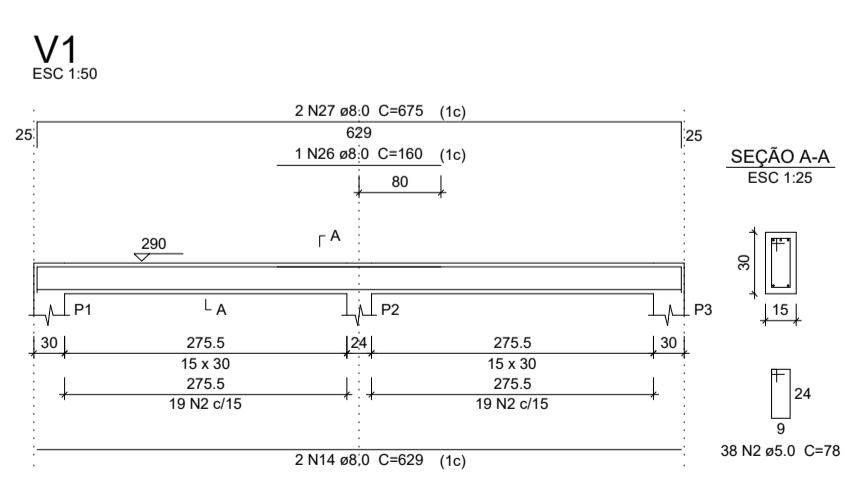
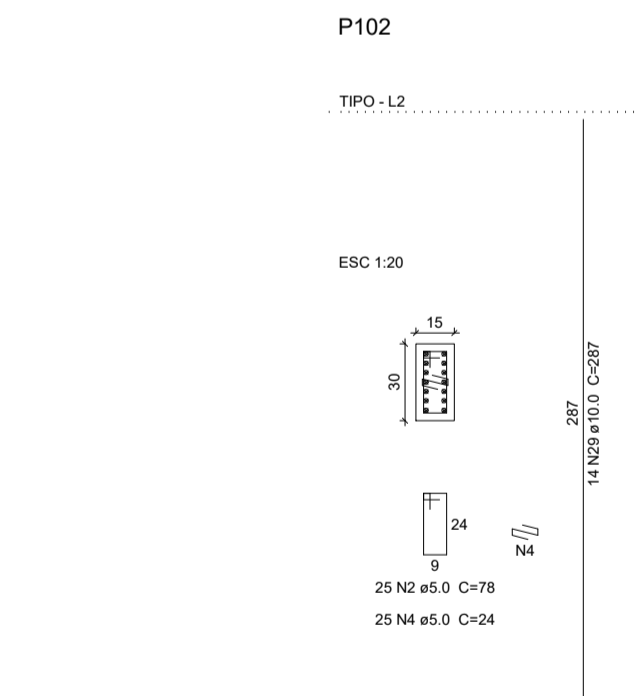
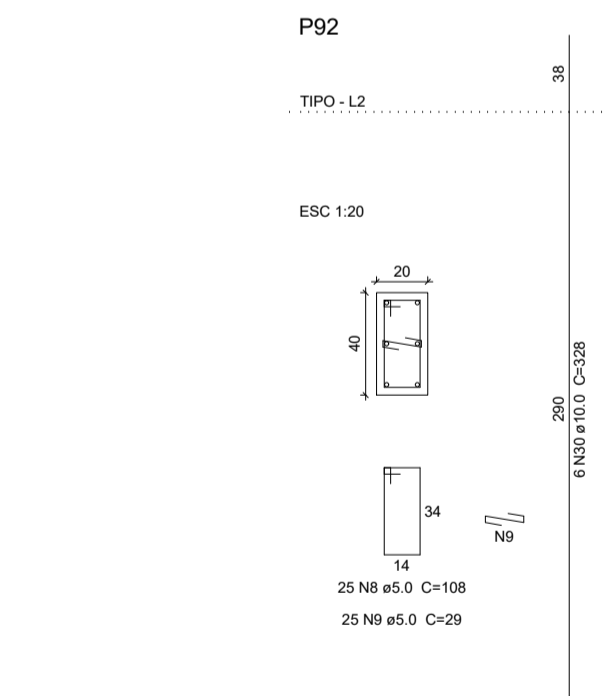
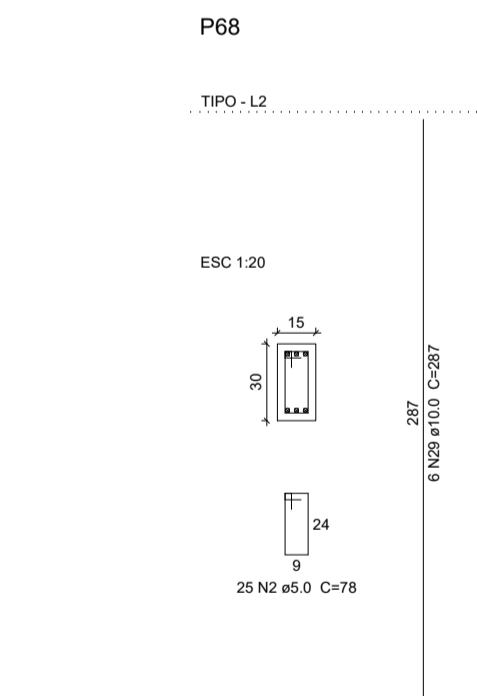
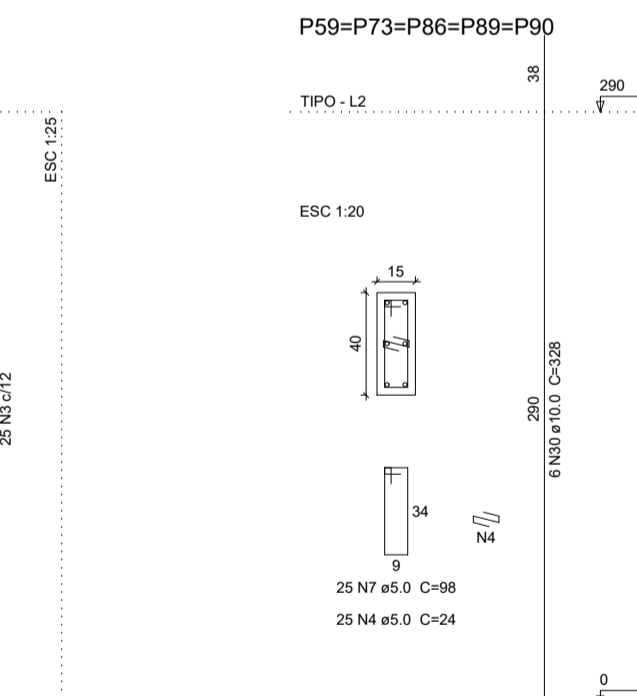
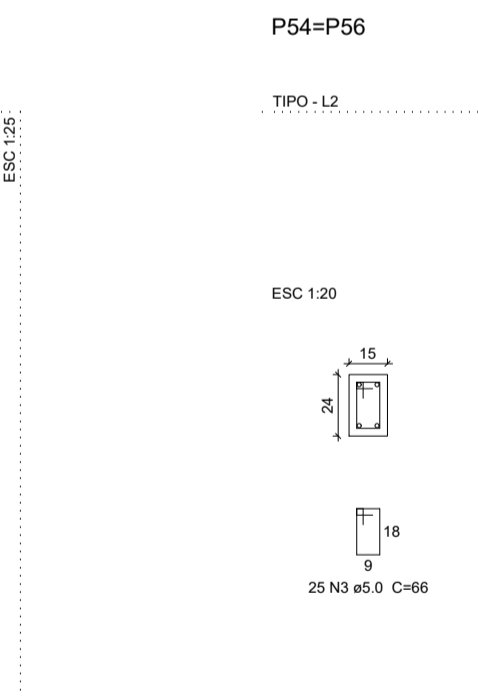
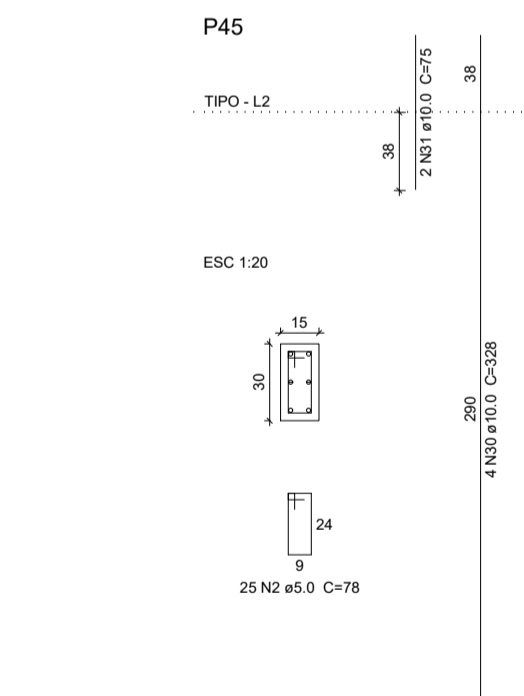
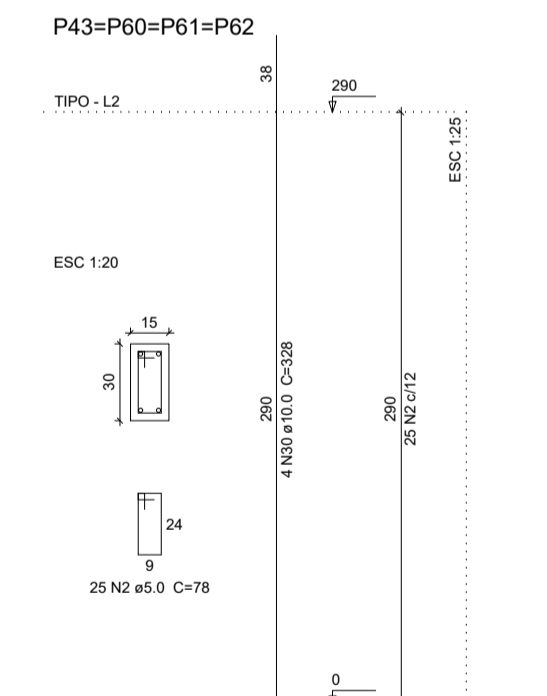
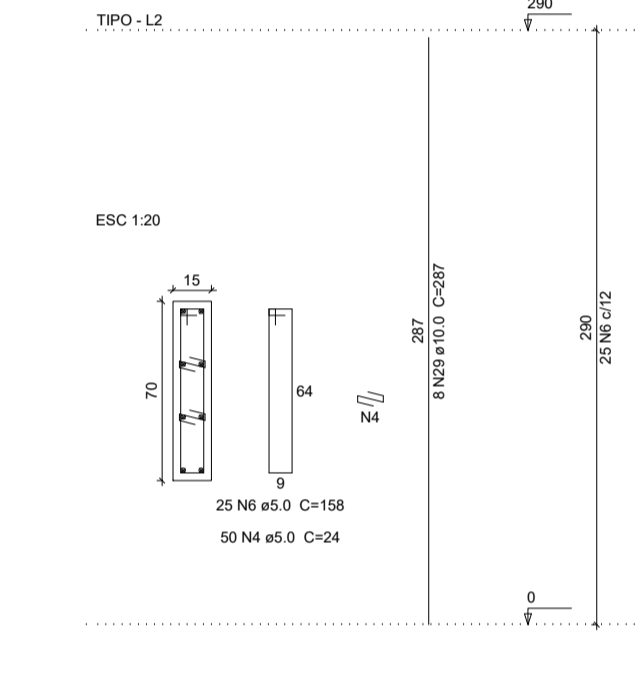
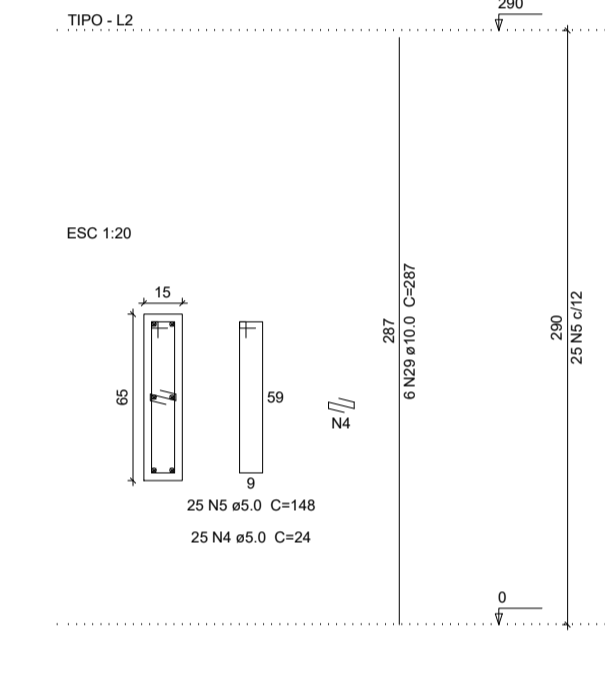
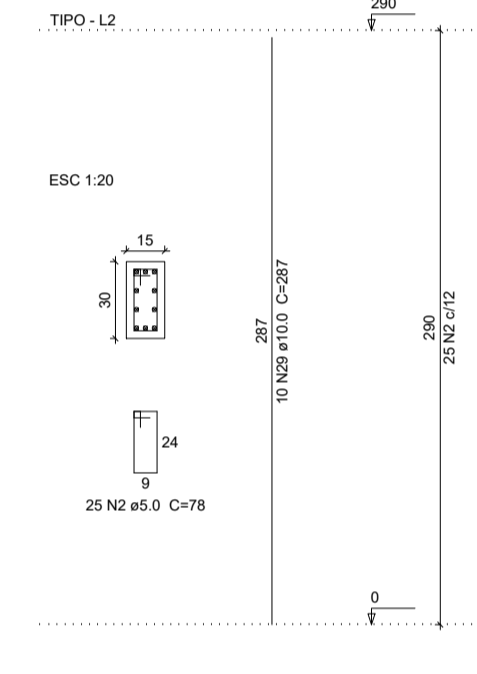
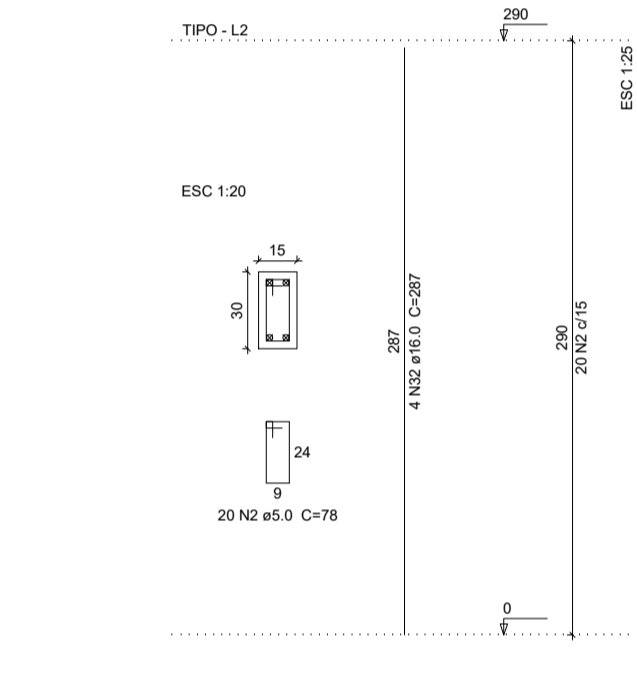
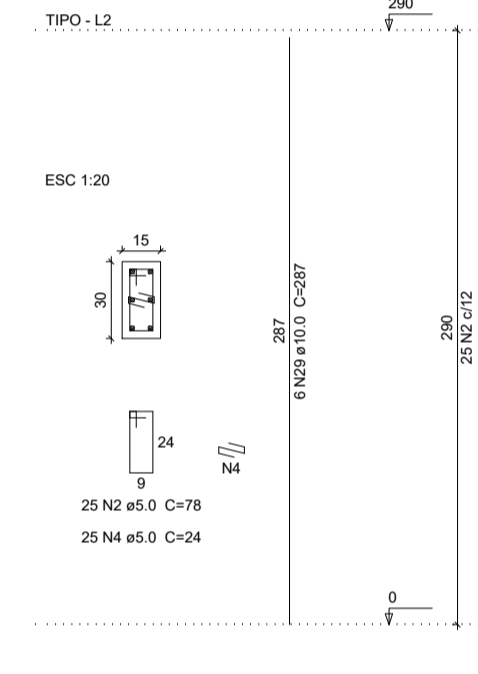
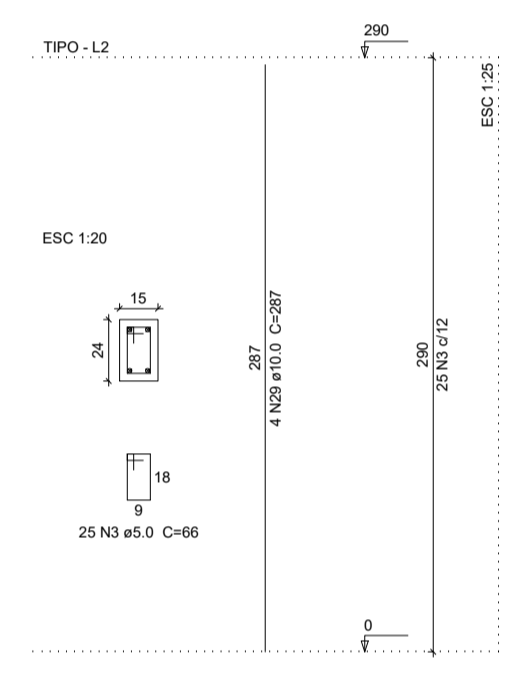
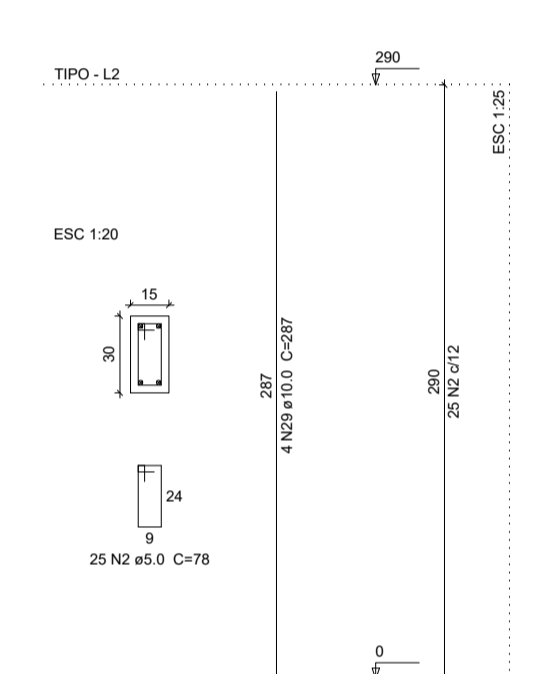
CA50	DIAM	C.TOTAL	PESO
CA50	8.0	244.1	86.3
CA50	10.0	1052.6	649
CA50	16.0	11.5	18.1
CA50	5.0	2096.6	322.8
PESO TOTAL			
CA50		763.4	
CA60		322.8	

Vol. de concreto total (C-25) = 12.83 m³
Área de forma total = 244.11 m²

P1=P5=P11=P19=P20=P21=P23=P24=P26=P30
=P33=P35=P36=P46=P63=P70=P74=P76=P78
=P80=P81=P94=P96=P98=P100=P101

P2=P4=P7=P10=P22=P25=P27=P29=P46=P49
=P75=P77=P79=P86=P95=P97=P99

P3=P6=P26=P31=P72



SECOMP - SECRETARIA DE OBRAS, MOBILIDADE E SERVIÇOS PÚBLICOS

PROJETO: CSF- CAMPO DOS VELHOS
PROJETO ESTRUTURAL

INTERESSADO: PREFEITURA DE SOBRAL
ENDEREÇO: BARRIO CAMPO DOS VELHOS
MUNICÍPIO: SOBRAL-CE

AUTOR: ENGR. CARLOS EDUARDO BRATZ
CREA - 321948

INDICADA: VIGAS BALDRAME
INDICADA: PILARES PAVIMENTO TIPO

DATA: MMD/2019
REVISÃO: 1
ARQUIVO: 07/22

PRACHA: 07/22

28/05/2019
15/05/2019
14/05/2019
13/05/2019
12/05/2019
11/05/2019
10/05/2019
09/05/2019
08/05/2019
07/05/2019
06/05/2019
05/05/2019
04/05/2019
03/05/2019
02/05/2019
01/05/2019