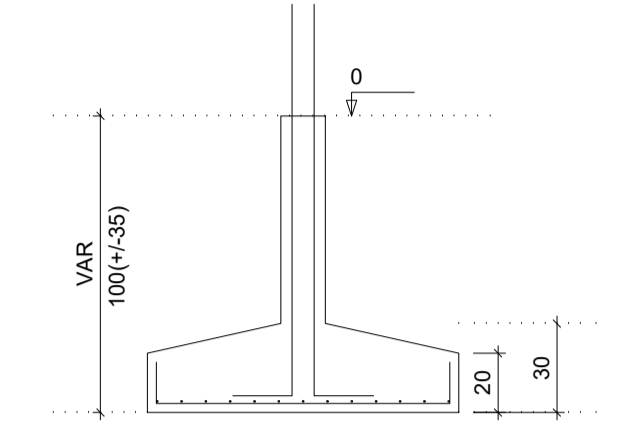
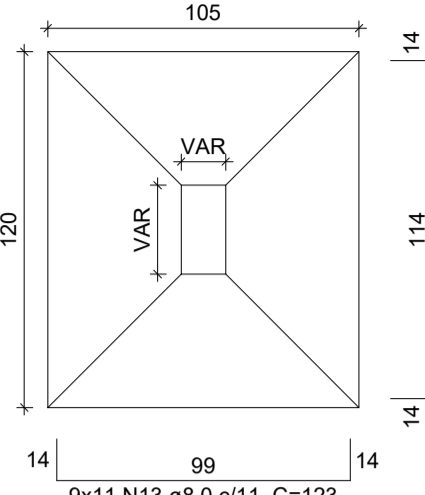


S6=S8=S19=S21=S23=S56=S74=S76=S77

PLANTA
ESC 1:25

CORTE
ESC 1:25



Solo com capacidade de suporte > 1.00 kgf/cm²
Solo compactado sobre a sapata
peso específico > 1600.00 kgf/m³

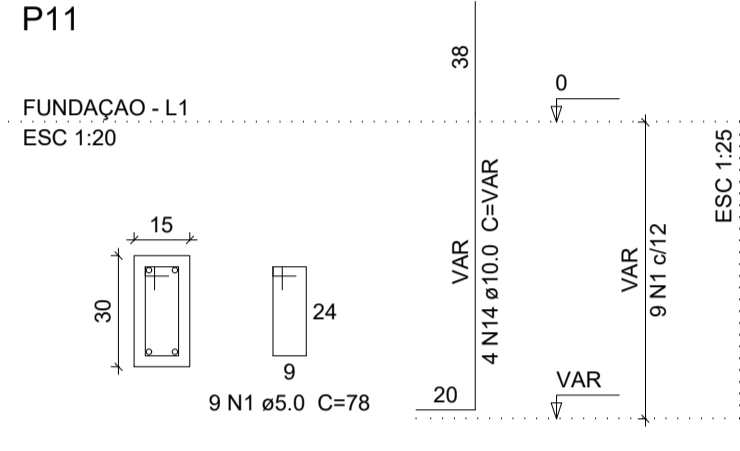
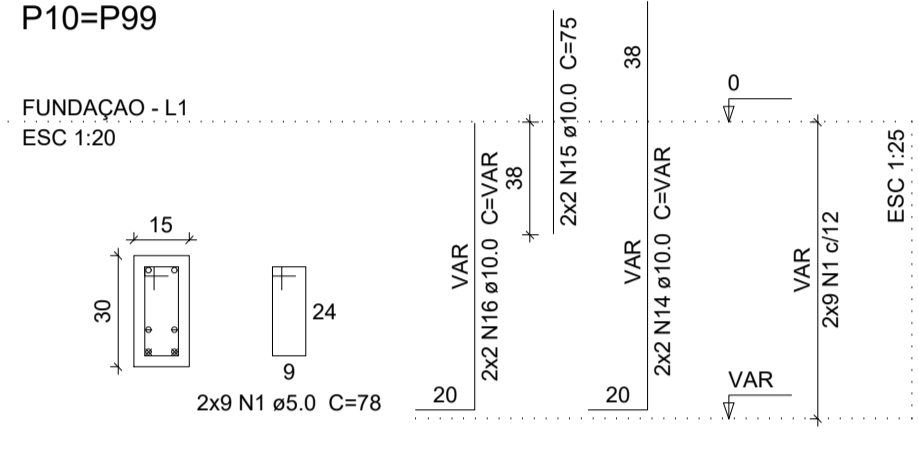
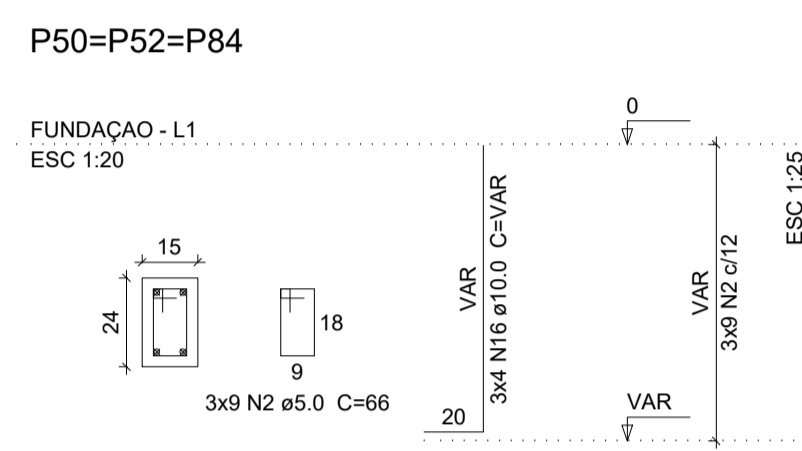
Relação do aço

CAÇO	N	DIAM	Q	UNIT (cm)	C.TOTAL (cm)
CA60	1	5.0	153	78	11934
	2	5.0	252	66	16632
	3	5.0	9	72	648
CA50	4	6.3	117	139	16263
	5	6.3	110	104	14592
	6	6.3	128	114	14592
	7	6.3	72	124	8928
	8	6.3	86	94	8272
	9	6.3	88	89	7832
	10	6.3	87	99	8613
	11	6.3	12	114	1368
	12	6.3	12	119	1428
	13	8.0	99	123	12177
14	10.0	62	VAR	VAR	
15	10.0	8	75	600	
16	10.0	126	VAR	VAR	
17	16.0	4	121	484	

Resumo do aço

CAÇO	DIAM	C.TOTAL (m)	PESO (kg)
CA50	6.3	787.4	192.7
	8.0	121.8	48
	10.0	247.7	152.7
	16.0	4.9	7.6
CA60	5.0	292.2	45
PESO TOTAL			
CA50		401	
CA60		45	

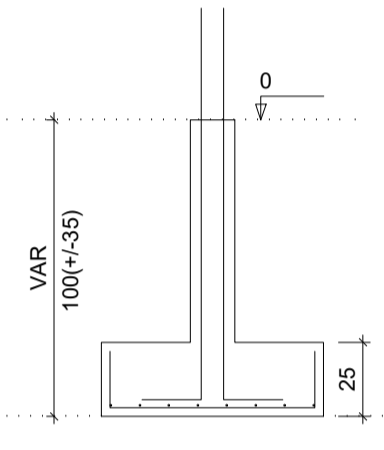
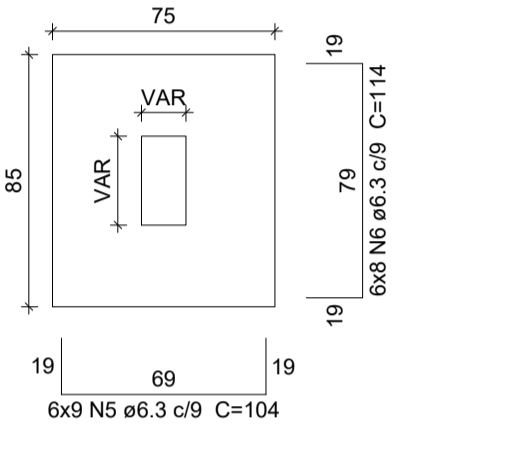
Vol. de concreto total (C-25) = 9.81 m³
Área de forma total = 73.64 m²



S10=S11=S50=S52=S84=S99

PLANTA
ESC 1:25

CORTE
ESC 1:25

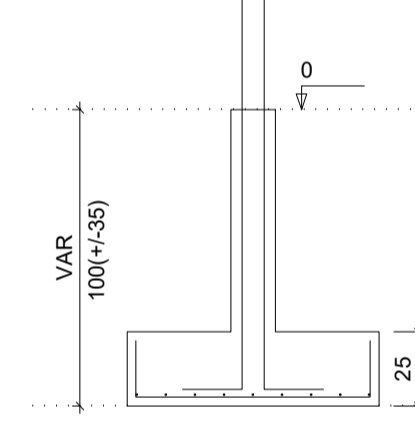
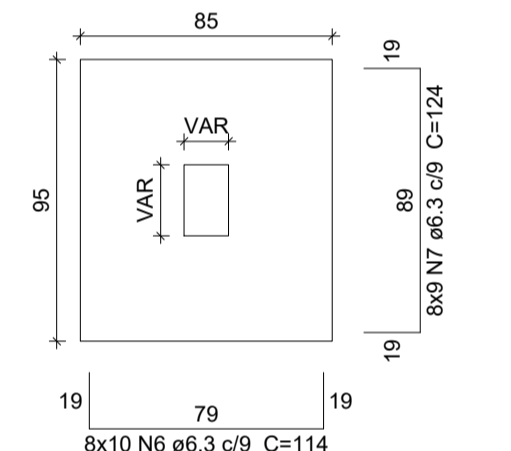


Solo com capacidade de suporte > 1.00 kgf/cm²
Solo compactado sobre a sapata
peso específico > 1600.00 kgf/m³

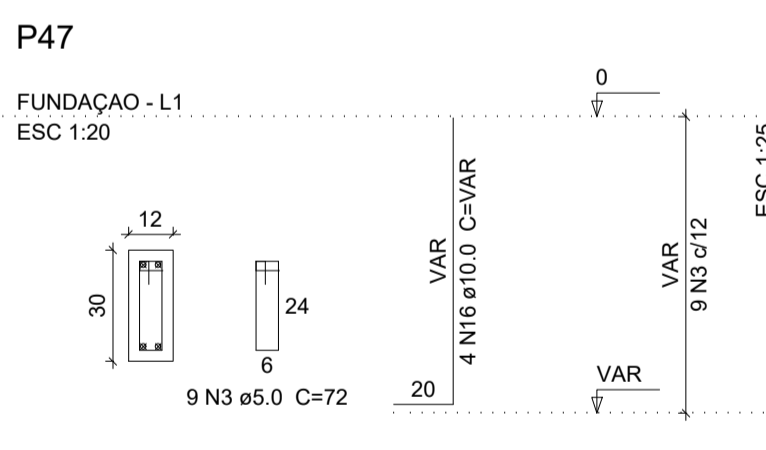
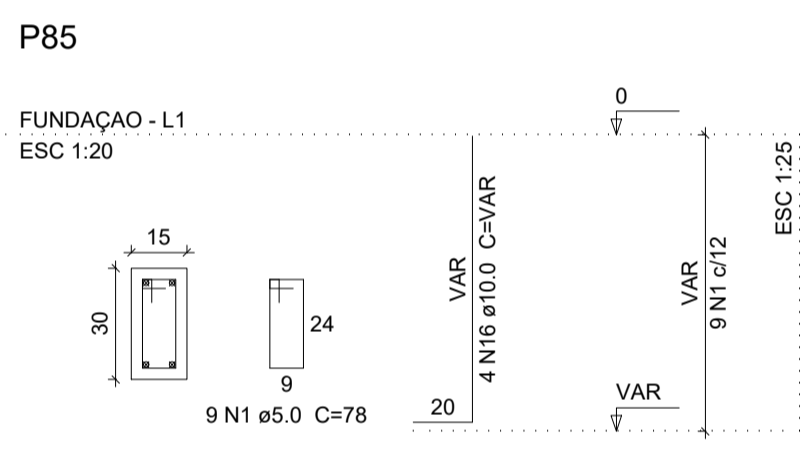
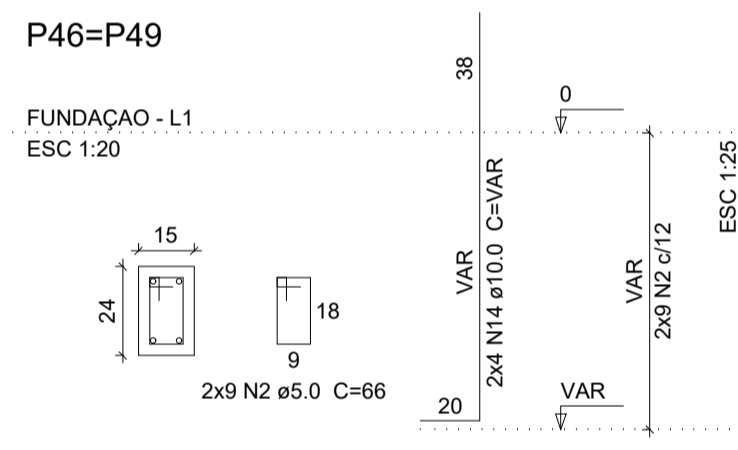
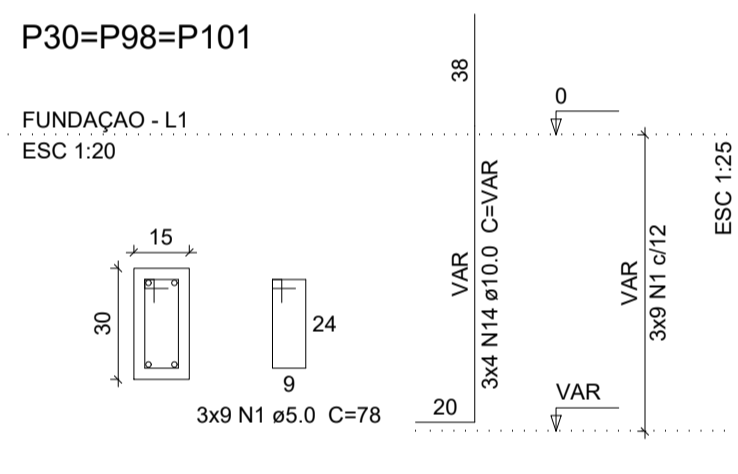
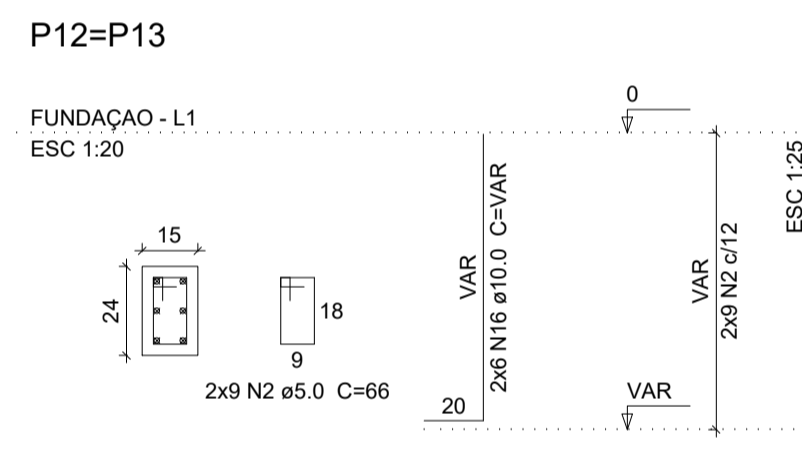
S12=S13=S30=S46=S49=S85=S98=S101

PLANTA
ESC 1:25

CORTE
ESC 1:25



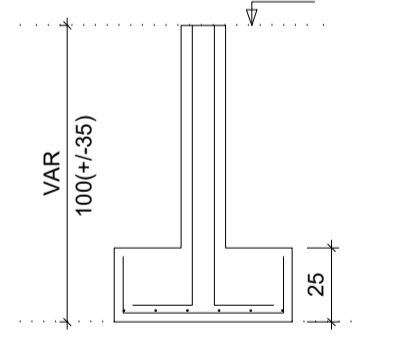
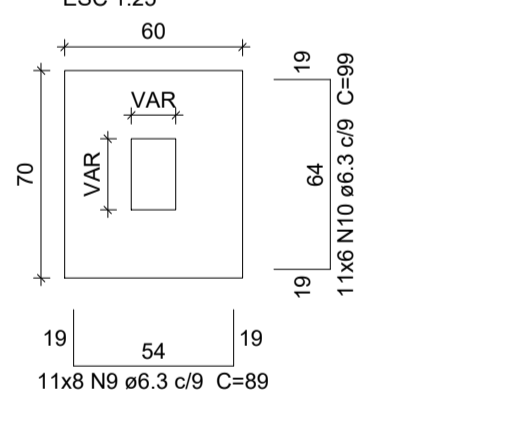
Solo com capacidade de suporte > 1.00 kgf/cm²
Solo compactado sobre a sapata
peso específico > 1600.00 kgf/m³



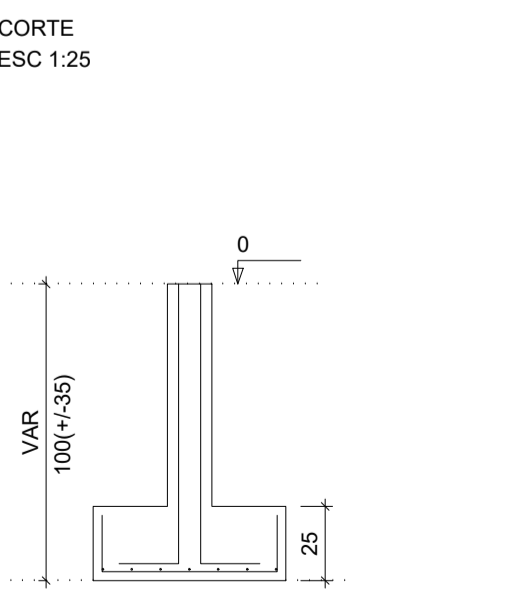
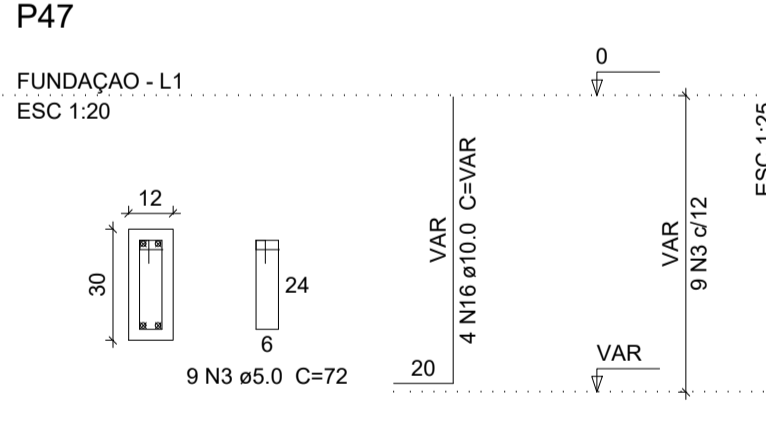
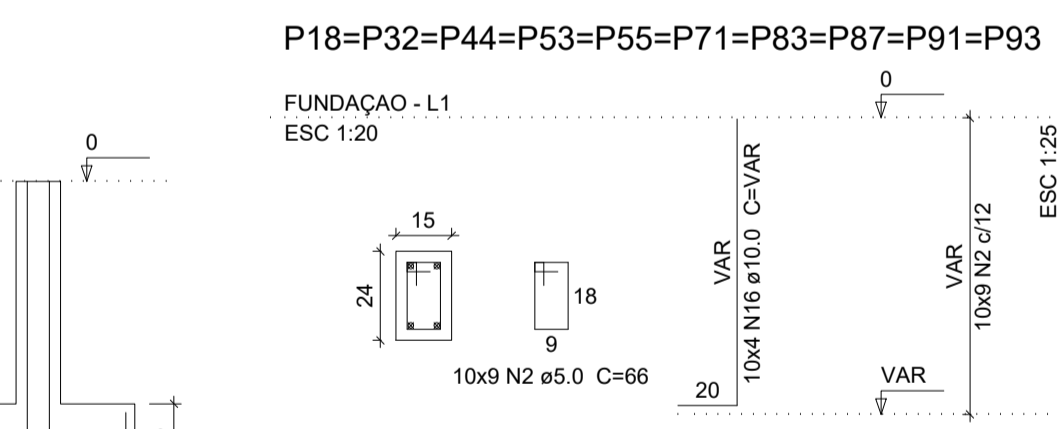
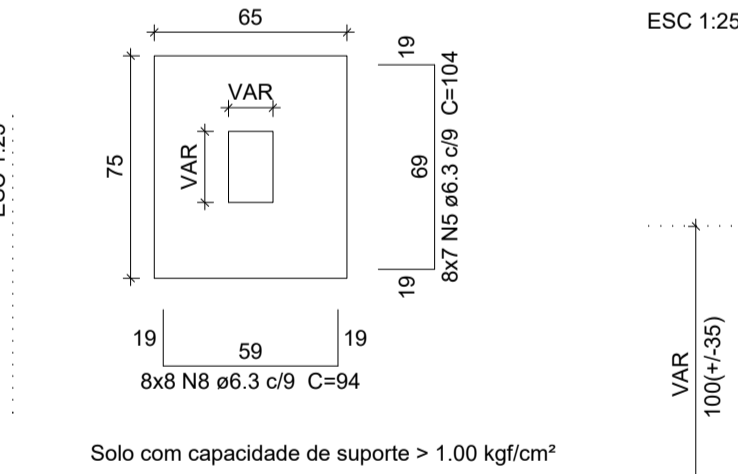
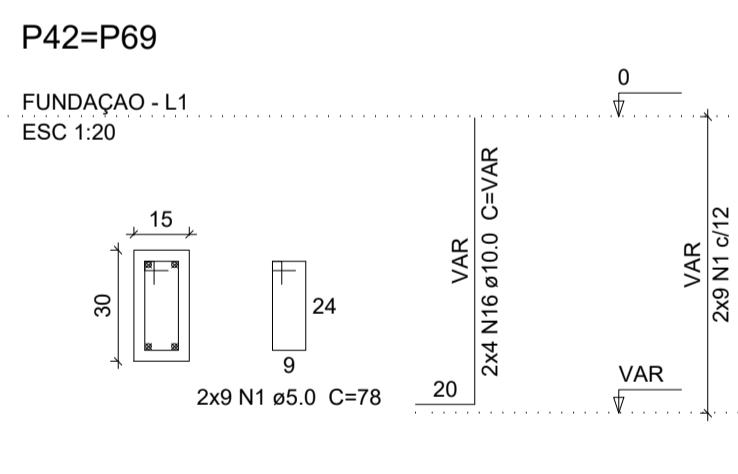
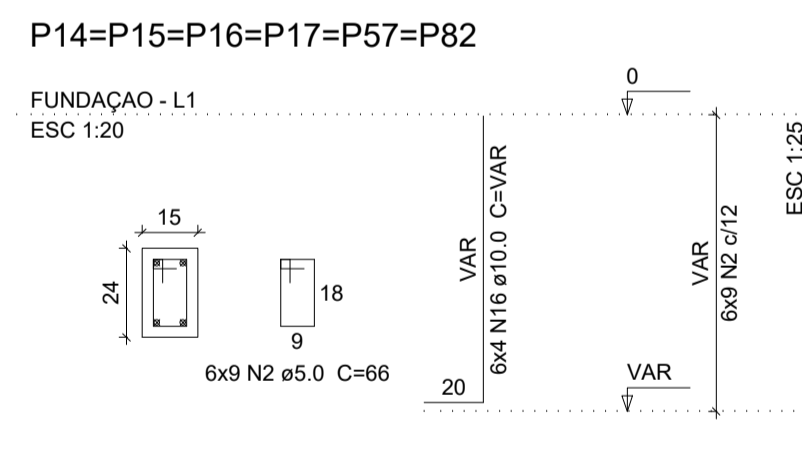
S18=S32=S44=S47=S53=S55=S71=S83=S87=S91=S93

PLANTA
ESC 1:25

CORTE
ESC 1:25



Solo com capacidade de suporte > 1.50 kgf/cm²
Solo compactado sobre a sapata
peso específico > 1600.00 kgf/m³

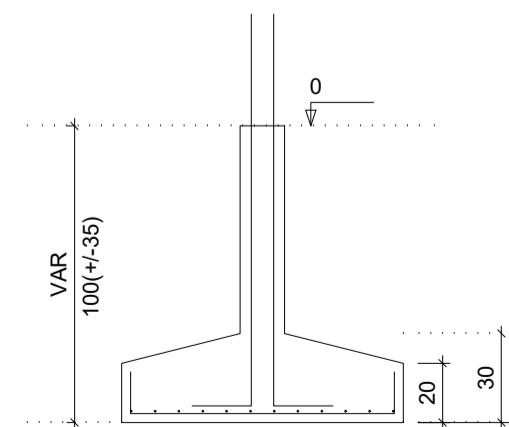
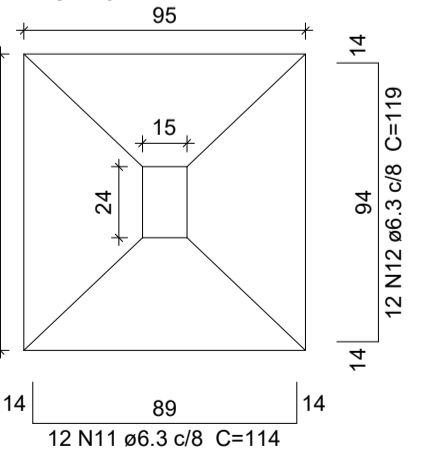


Solo com capacidade de suporte > 1.00 kgf/cm²
Solo compactado sobre a sapata
peso específico > 1600.00 kgf/m³

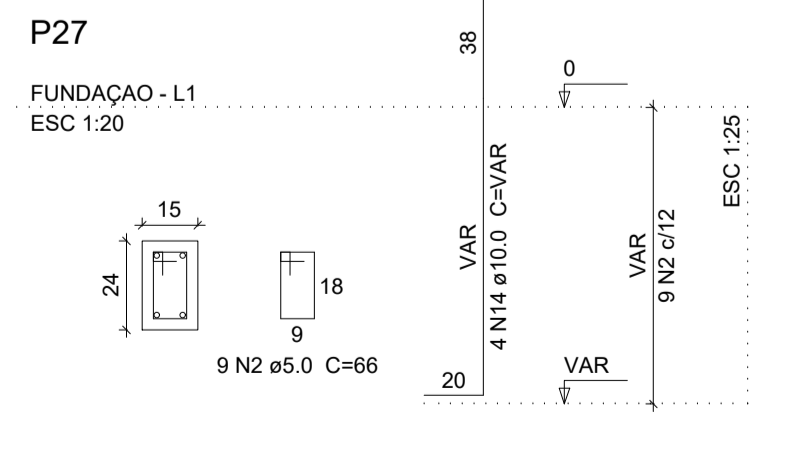
S27

PLANTA
ESC 1:25

CORTE
ESC 1:25



Solo com capacidade de suporte > 1.00 kgf/cm²
Solo compactado sobre a sapata
peso específico > 1600.00 kgf/m³



SECOM - SECRETARIA DE OBRAS, MOBILIDADE E SERVIÇOS PÚBLICOS

PROJETO: **CSF- CAMPO DOS VELHOS PROJETO ESTRUTURAL**

INTERESSADO: **PREFEITURA DE SOBRAL**

ENDEREÇO: **BAIRRO CAMPO DOS VELHOS**

MUNICÍPIO: **SOBRAL-CE**

AUTOR: **ENG. CARLOS EDUARDO BRATZ CREA - 321948**

PREFEITURA DE SOBRAL	SAPATAS - FUNDAÇÃO	INDICADA
	PILARES - FUNDAÇÃO	INDICADA

- 01 - PENA
 - 1 - 0.10
 - 2 - 0.20
 - 3 - 0.30
 - 4 - 0.40
 - 5 - 0.50
 - 6 - 0.80
 - 7 - 0.30
 - 8 - 0.10
 - 9 - 0.09
 - 10 - 0.10
- COLORIDA