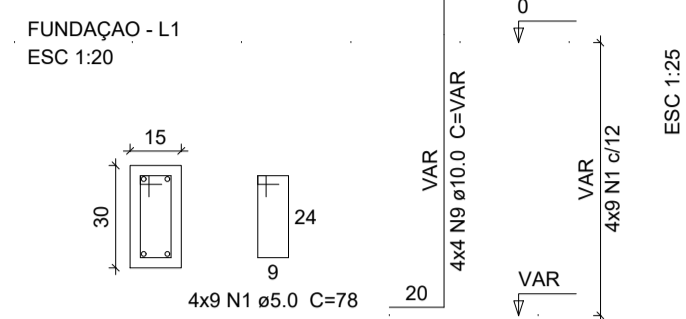
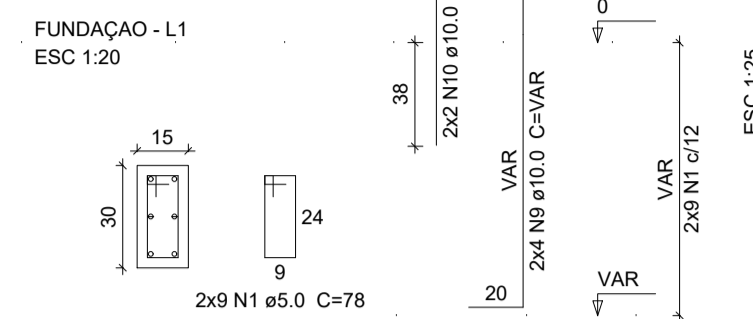


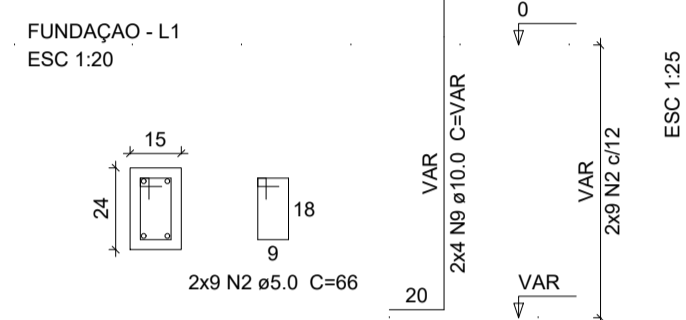
P1=P24=P63=P70



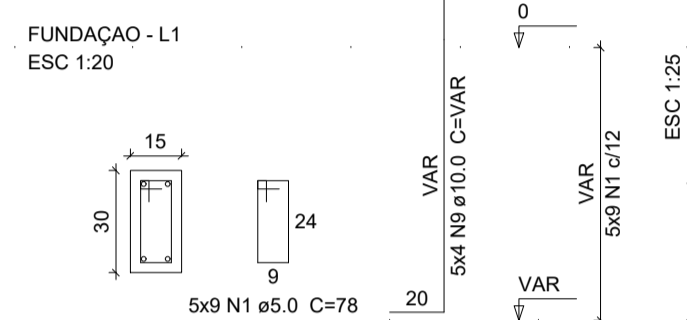
P26=P31



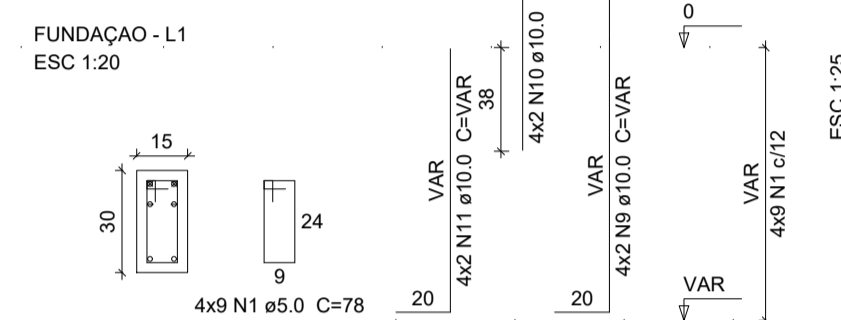
P2=P88



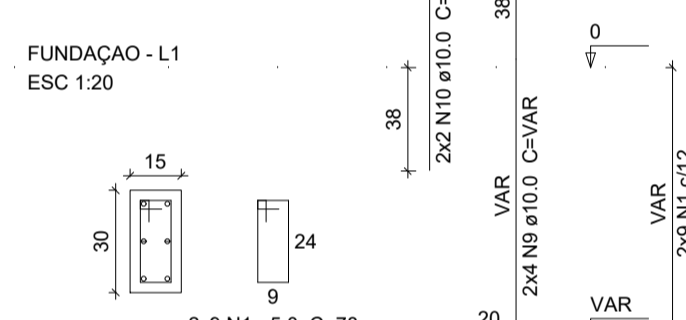
P35=P36=P78=P94=P100



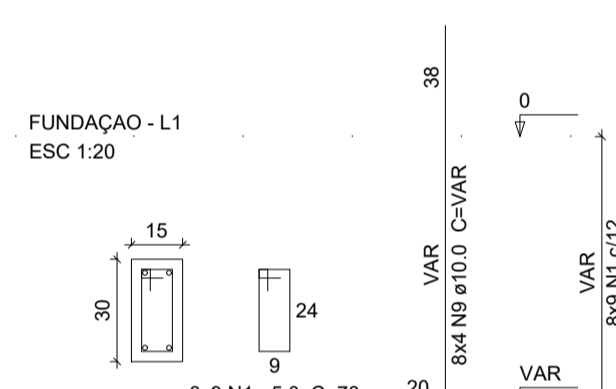
P7=P29=P79=P95



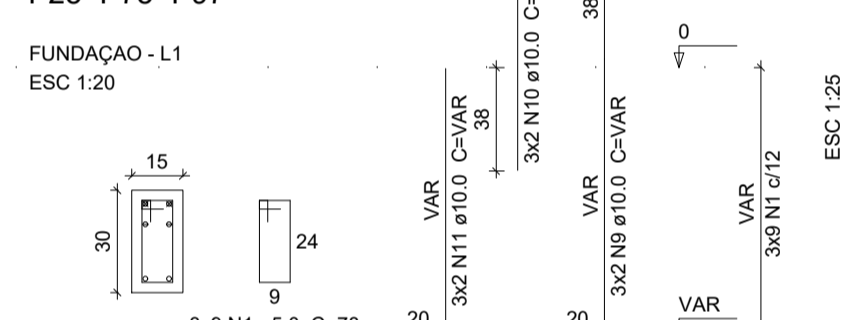
P3=P72



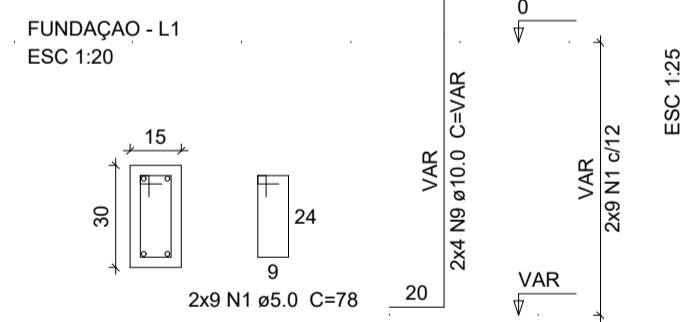
P5=P28=P33=P48=P62=P80=P81=P96



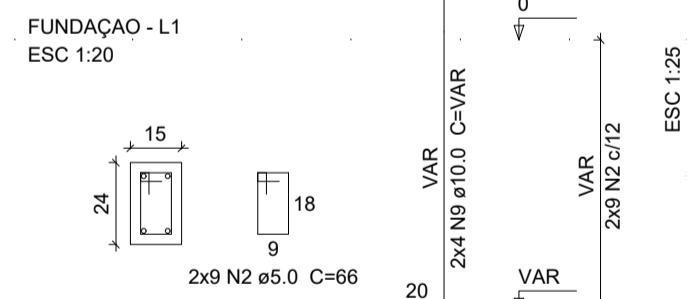
P25=P75=P97



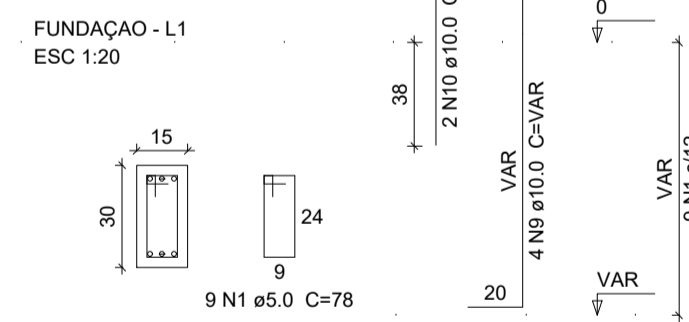
P20=P45



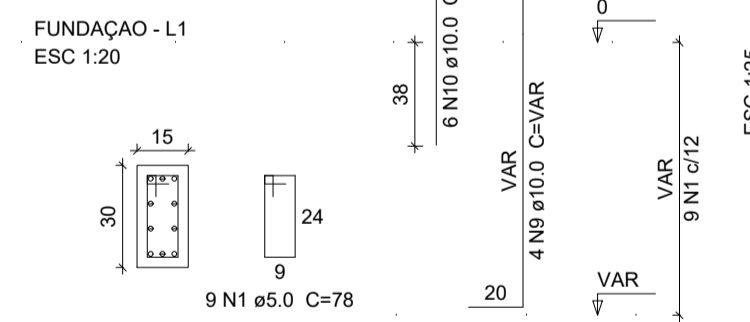
P4=P22



P68

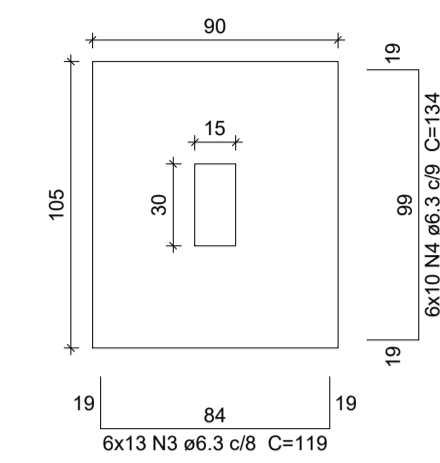


P9



S1=S24=S26=S31=S63=S70

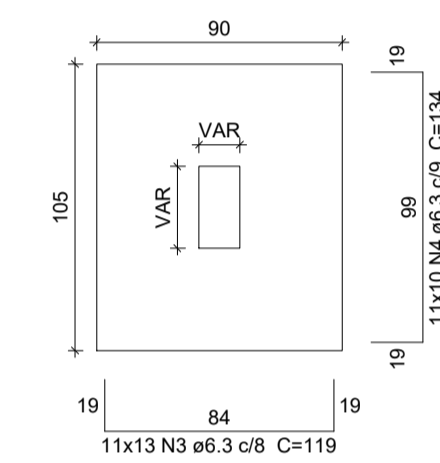
PLANTA ESC 1:25 CORTE ESC 1:25



Solo com capacidade de suporte > 1,00 kgf/cm²
Solo compactado sobre a sapata
peso específico > 1600,00 kgf/m³

S2=S7=S29=S35=S36=S78=S79=S88=S94=S95

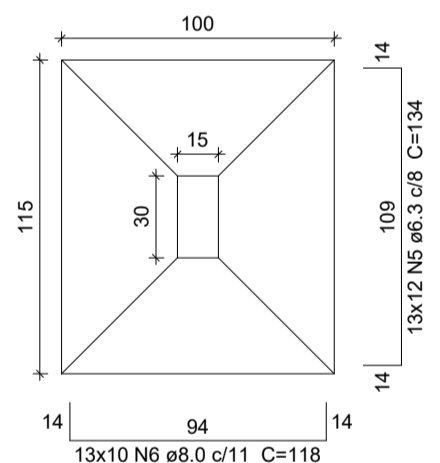
=S100 PLANTA ESC 1:25 CORTE ESC 1:25



Solo com capacidade de suporte > 1,00 kgf/cm²
Solo compactado sobre a sapata
peso específico > 1600,00 kgf/m³

S3=S5=S25=S28=S33=S48=S62=S72=S75=S80

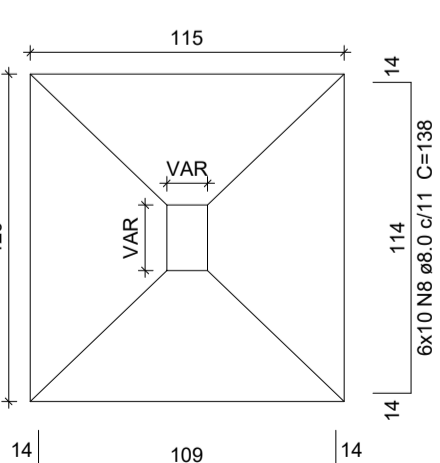
=S81=S96=S97 PLANTA ESC 1:25 CORTE ESC 1:25



Solo com capacidade de suporte > 1,00 kgf/cm²
Solo compactado sobre a sapata
peso específico > 1600,00 kgf/m³

S4=S9=S20=S22=S45=S68

PLANTA ESC 1:25 CORTE ESC 1:25



Solo com capacidade de suporte > 1,00 kgf/cm²
Solo compactado sobre a sapata
peso específico > 1600,00 kgf/m³

Relação do aço

ACO	N	DIAM	Q	UNIT (cm)	C.TOTAL (cm)
CA60	1	5.0	288	78	22464
CA50	2	5.0	36	66	2376
	3	6.3	221	119	26299
	4	6.3	170	134	22780
	5	6.3	156	134	20904
	6	8.0	130	118	15340
	7	8.0	84	133	11172
	8	8.0	60	138	8280
	9	10.0	130	VAR	VAR
	10	10.0	30	75	2250
	11	10.0	14	VAR	VAR

Resumo do aço

ACO	DIAM	C.TOTAL (m)	PESO (kg)
CA50	6.3	699.9	171.3
	8.0	348	137.3
	10.0	241.4	148.8
CA60	5.0	248.4	38.3
PESO TOTAL			
CA50		457.4	
CA60		38.3	

Vol. de concreto total (C-25) = 11,35 m³
Área de forma total = 65,31 m²

ESCALA DE FUNDACÃO: 10 : 1

COR	FEITA
1	0.10
2	0.30
3	0.30
4	0.40
5	0.50
6	0.80
7	0.30
8	0.10
9	0.09
10	0.10

SECOMP - SECRETARIA DE OBRAS, MOBILIDADE E SERVIÇOS PÚBLICOS

PROJETO: CSF- CAMPO DOS VELHOS
PROJETO ESTRUTURAL

INTERESSADO: PREFEITURA DE SOBRAL
ENDEREÇO: BAIRRO CAMPO DOS VELHOS
MUNICÍPIO: SOBRAL-CE

AUTOR: ENG. CARLOS EDUARDO BRATZ
CREA - 321948

PREFEITURA DE SOBRAL

SAPATAS - FUNDAÇÃO INDICADA
PILARES - FUNDAÇÃO INDICADA

DATA MAIO/2019

REVISÃO

ARQUIVO

PRACHA 01/22