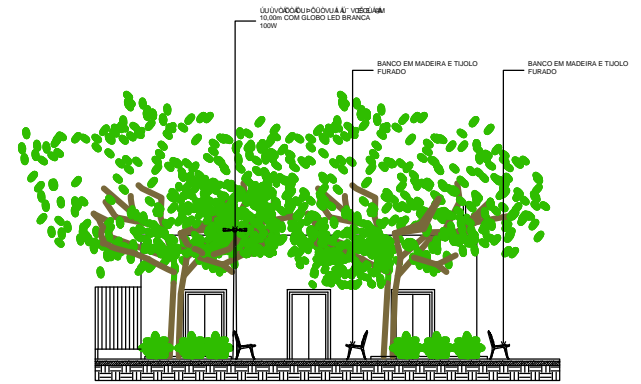
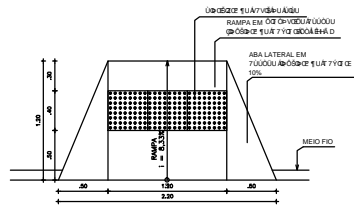


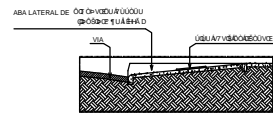
1 CORTE AA
ESCALA 1:100



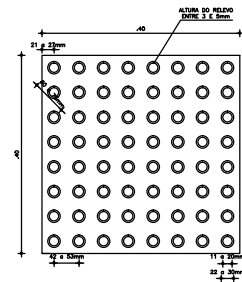
2 CORTE BB
ESCALA 1:100



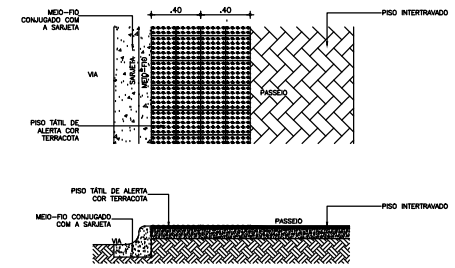
3 DET. RAMPA
ESCALA 1:25



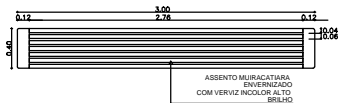
4 DET. VISTA LATERAL RAMPA
ESCALA 1:25



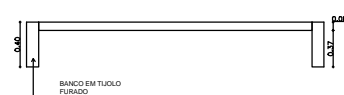
5 DET. PISO DE ALERIA
ESCALA 1:5



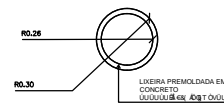
6 DET. PASSEIO
ESCALA 1:20



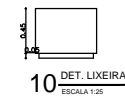
7 DET. BANCO
ESCALA 1:25



8 DET. BANCO
ESCALA 1:25



9 DET. LIXEIRA
ESCALA 1:25



10 DET. LIXEIRA
ESCALA 1:25

| | |
|-----|------|
| COP | PRM |
| 1 | 0,10 |
| 2 | 0,10 |
| 3 | 0,12 |
| 4 | 0,10 |
| 5 | 0,10 |
| 6 | 0,10 |
| 7 | 0,10 |
| 8 | 0,10 |
| 9 | 0,10 |
| 10 | 0,10 |

SECOMP - SECRETARIA DE OBRAS, MOBILIDADE E SERVIÇOS PÚBLICOS

PROJETO: ARQUITETURA

INTERESSADO: PREFEITURA DE SOBRAL

ENDEREÇO: LOCALIDADE DE SANTANA

MUNICÍPIO: SOBRAL

AUTOR: TAIS ALBUQUERQUE RIOS

AUTOR: NADINE SIQUEIRA

DESENHOS DA FRANCHA

ESCALA

CORTE AA 1:100

CORTE BB 1:100

DETALHAMENTO INDICADA

DATA: SETEMBRO/2017

ARQUIVO: PR_01_02

ARQ: 02/03