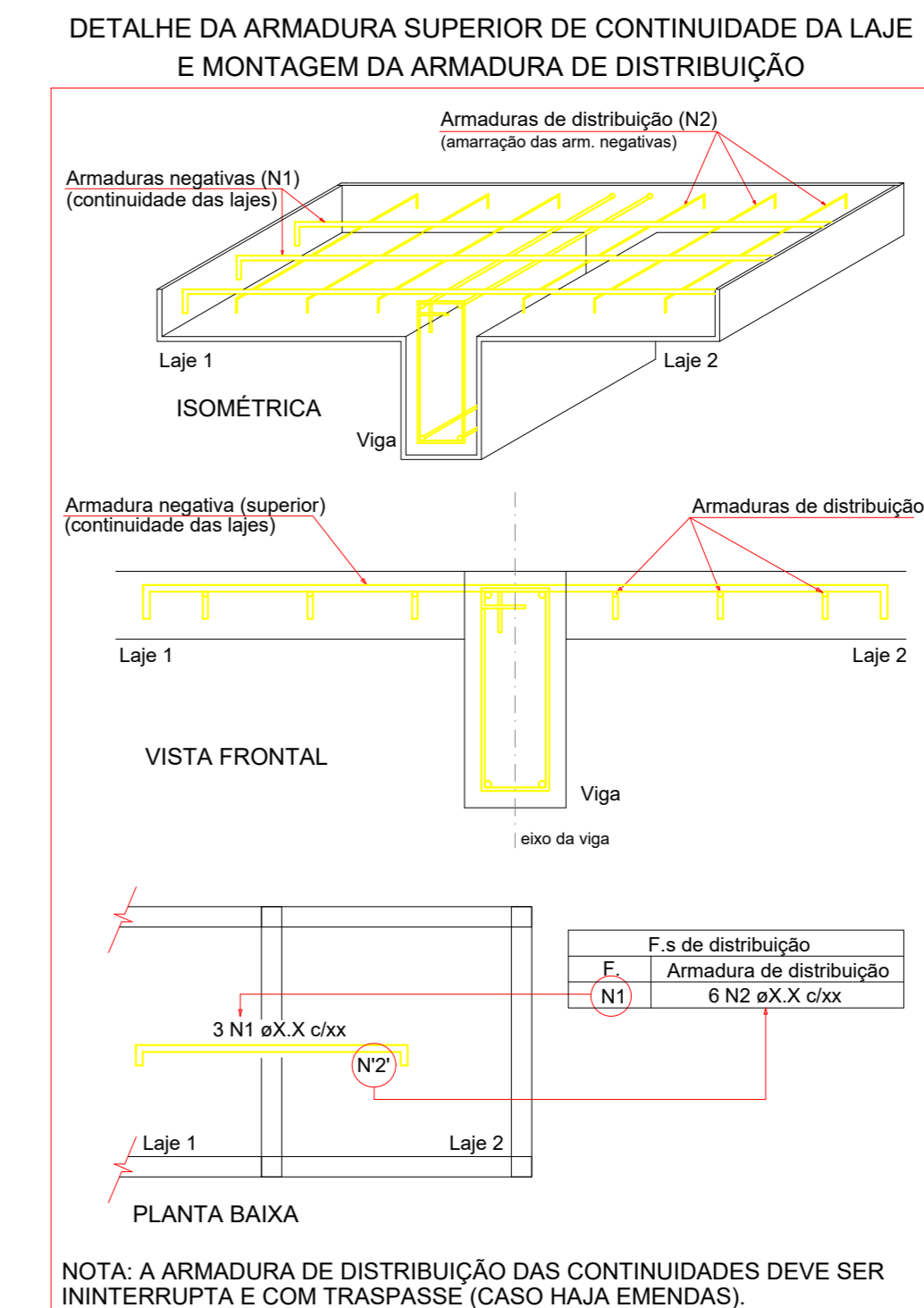


Armadura	Armadura de distribuição
N37	18 N2 ø5.0/20 C=560
N39	8 N3 ø5.0/20 C=56
N40	11 N2 ø5.0/18 C=560
N41	9 N4 ø5.0/17 C=240
N42	12 N2 ø5.0/20 C=560
N43	11 N2 ø5.0/20 C=560
N23	4 N5 ø5.0/20 C=535
N24	3 N2 ø5.0/20 C=560
N25	5 N6 ø5.0/20 C=195
N50	15 N7 ø5.0/16 C=400
N44	7 N8 ø5.0/20 C=80
N48	12 N8 ø5.0/17 C=446
N10	4 N8 ø5.0/20 C=80
N11	8 N8 ø5.0/20 C=80
N36	16 N12 ø5.0/20 C=170
N38	15 N4 ø5.0/20 C=240
N39	16 N13 ø5.0/20 C=196
N27	15 N14 ø5.0/20 C=543
N48	9 N15 ø5.0/20 C=180
N49	17 N16 ø5.0/20 C=405
N28	16 N17 ø5.0/20 C=493
N29	8 N18 ø5.0/20 C=211
N30	9 N18 ø5.0/20 C=165
N31	10 N19 ø5.0/20 C=165
N32	9 N12 ø5.0/20 C=170
N33	10 N20 ø5.0/20 C=100
N34	13 N21 ø5.0/20 C=360
N35	17 N22 ø5.0/20 C=155



Relação do aço					
ELEMENTO	AÇO	N	DIAM (mm)	QUANT	C.TOTAL (cm)
Negativos X	CA80	1	5.0	3	331
	CA80	2	5.0	53	2660
	CA80	3	5.0	26	1298
	CA80	4	5.0	25	1250
	CA80	5	5.0	4	200
	CA80	6	5.0	5	250
	CA80	7	5.0	15	750
	CA80	8	5.0	21	1050
	CA80	9	5.0	12	600
	CA80	10	5.0	4	200
	CA80	11	5.0	9	450
	CA80	12	5.0	25	1250
	CA80	13	5.0	16	800
	CA80	14	5.0	17	850
	CA80	15	5.0	9	450
	CA80	16	5.0	17	850
	CA80	17	5.0	16	800
	CA80	18	5.0	8	400
	CA80	19	5.0	19	950
	CA80	20	5.0	10	500
	CA80	21	5.0	13	650
	CA80	22	5.0	17	850
	CA80	23	6.3	27	1365
	CA80	24	6.3	28	1366
	CA80	25	6.3	14	693
	CA80	26	6.3	6	315
	CA80	27	6.3	54	2672
CA80	28	6.3	62	3006	
CA80	29	6.3	11	544	
CA80	30	6.3	8	424	
CA80	31	6.3	8	424	
CA80	32	6.3	9	472	
CA80	33	6.3	6	315	
CA80	34	6.3	18	864	
CA80	35	6.3	8	424	
CA80	36	8.0	34	1714	
CA80	37	10.0	35	1750	
CA80	38	10.0	4	200	
CA80	39	10.0	3	150	
CA80	40	10.0	38	1900	
CA80	41	10.0	18	900	
CA80	42	10.0	35	1750	
CA80	43	10.0	35	1750	
CA80	44	10.0	4	200	
CA80	45	10.0	2	100	
CA80	46	10.0	32	1600	
CA80	47	10.0	3	150	
CA80	48	10.0	9	450	
CA80	49	10.0	20	1000	
CA80	50	12.5	22	1100	

Resumo do aço			
AÇO	DIAM (mm)	C.TOTAL (m)	PESO (kg)
CA80	5.0	995.2	153.4
CA80	6.3	11.1	1.7
CA80	8.0	102.7	40.5
CA80	10.0	532.2	238.1
CA80	12.5	51.1	49.2
PESO TOTAL			553.9

Armação negativa das lajes do pavimento SUPERIOR 01 (Eixo X) escala 1:50

A & V PROJETOS DE ENGENHARIA

PROJETO: PROJETO ESTRUTURAL HOSPITAL DR ESTEVAM

INTERESSADO: PREFEITURA DE SOBRAL

ENDEREÇO: -

MUNICÍPIO: SOBRAL-CE

DATA: 24/10/2022

REVISÃO: 00

ARQUIVO

EST 21