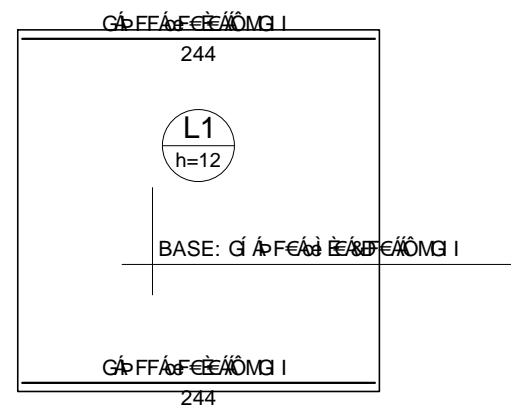
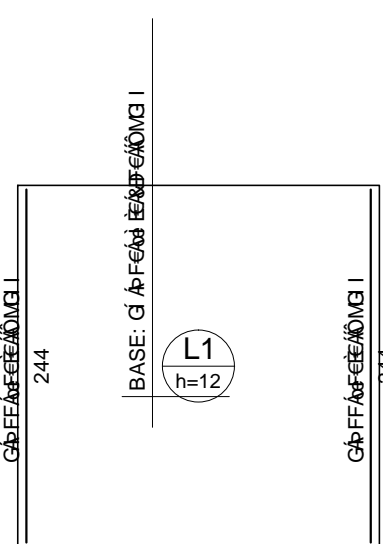
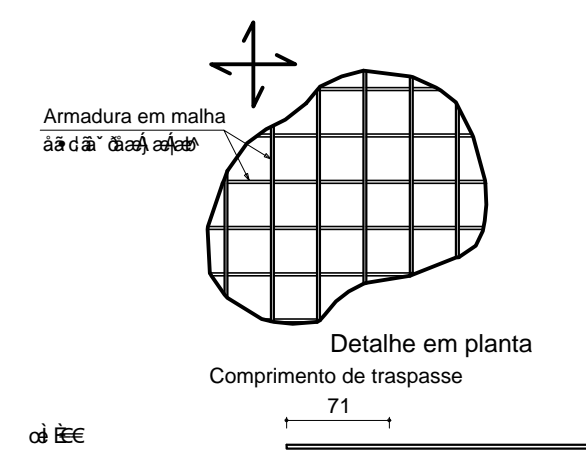


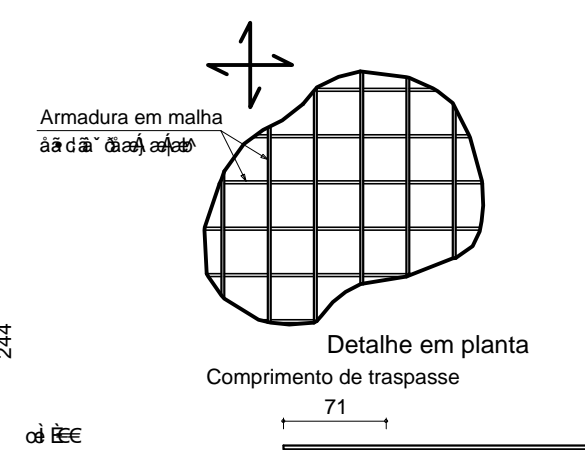
CE (asê [A - A i q i A [A a a i A [A a q ^) d A D U U U V U W W U C A D a [Á D



DETALHE DA ARMADURA DE MALHA BASE



DETALHE DA ARMADURA DE MALHA BASE

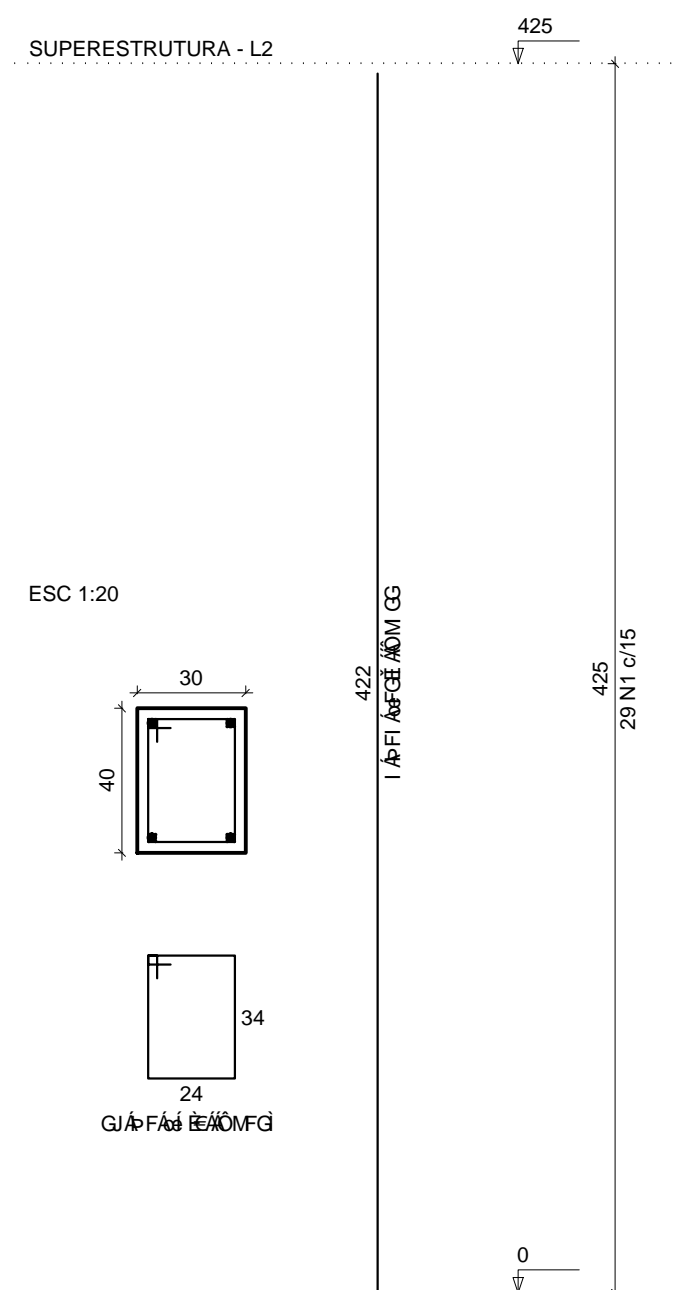


CE (asê [A - A i q i A [A a a i A [A a q ^) d A D U U U V U W W U C A D a [Á D

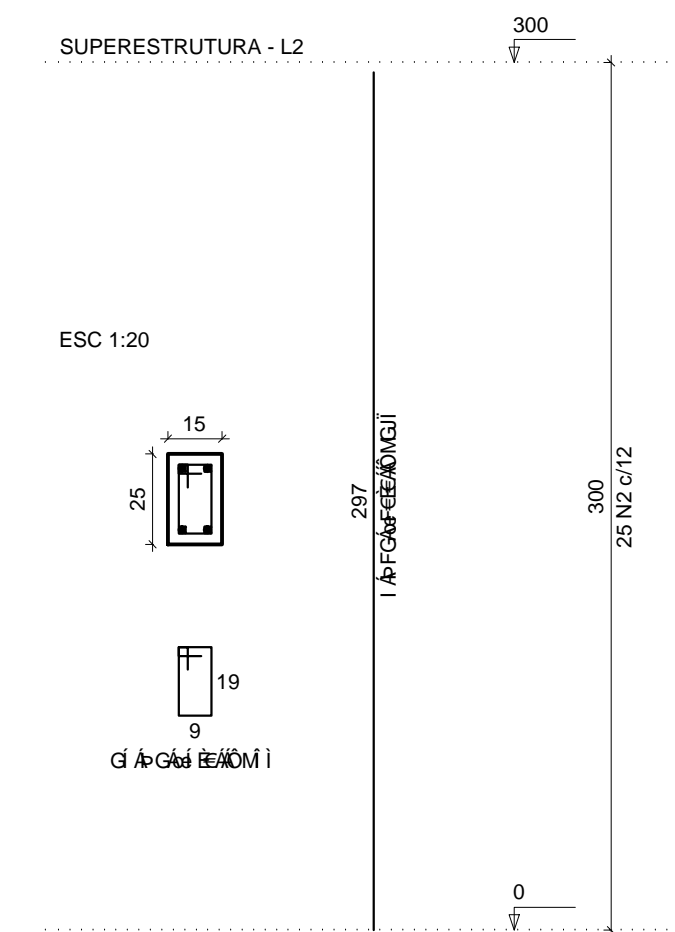
escala 1:50

escala 1:50

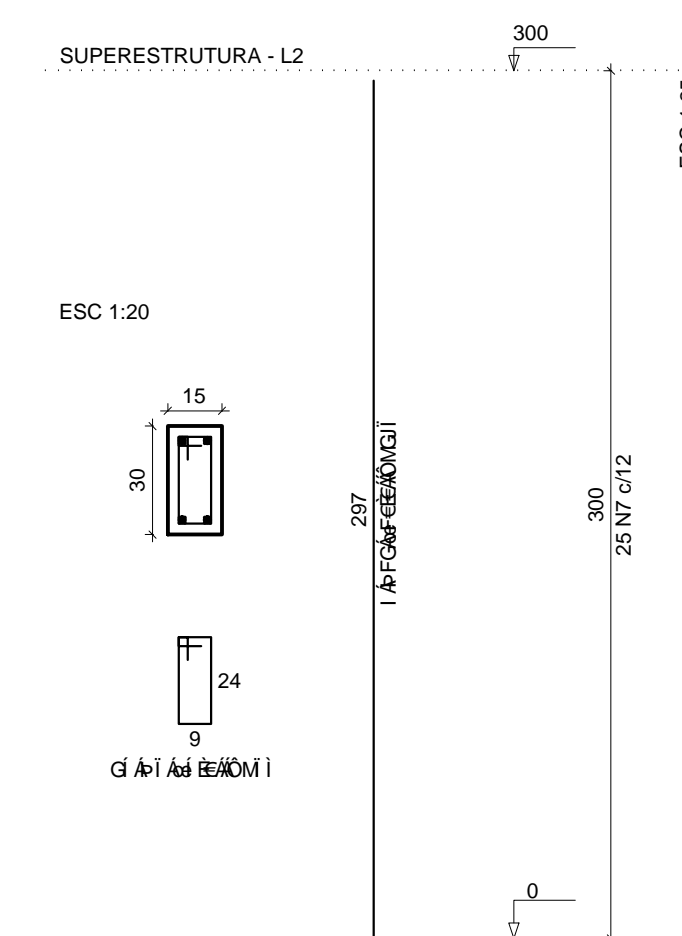
P1=P5=P12



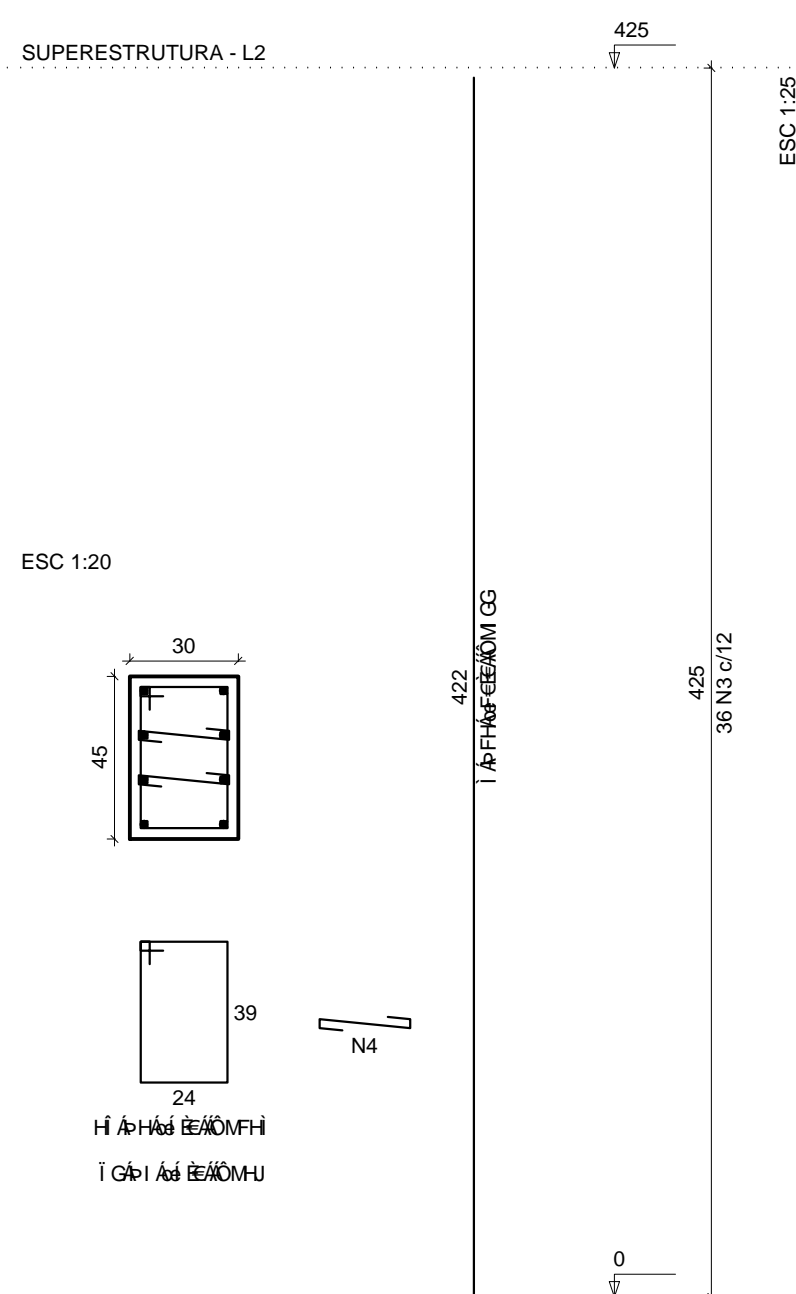
P2



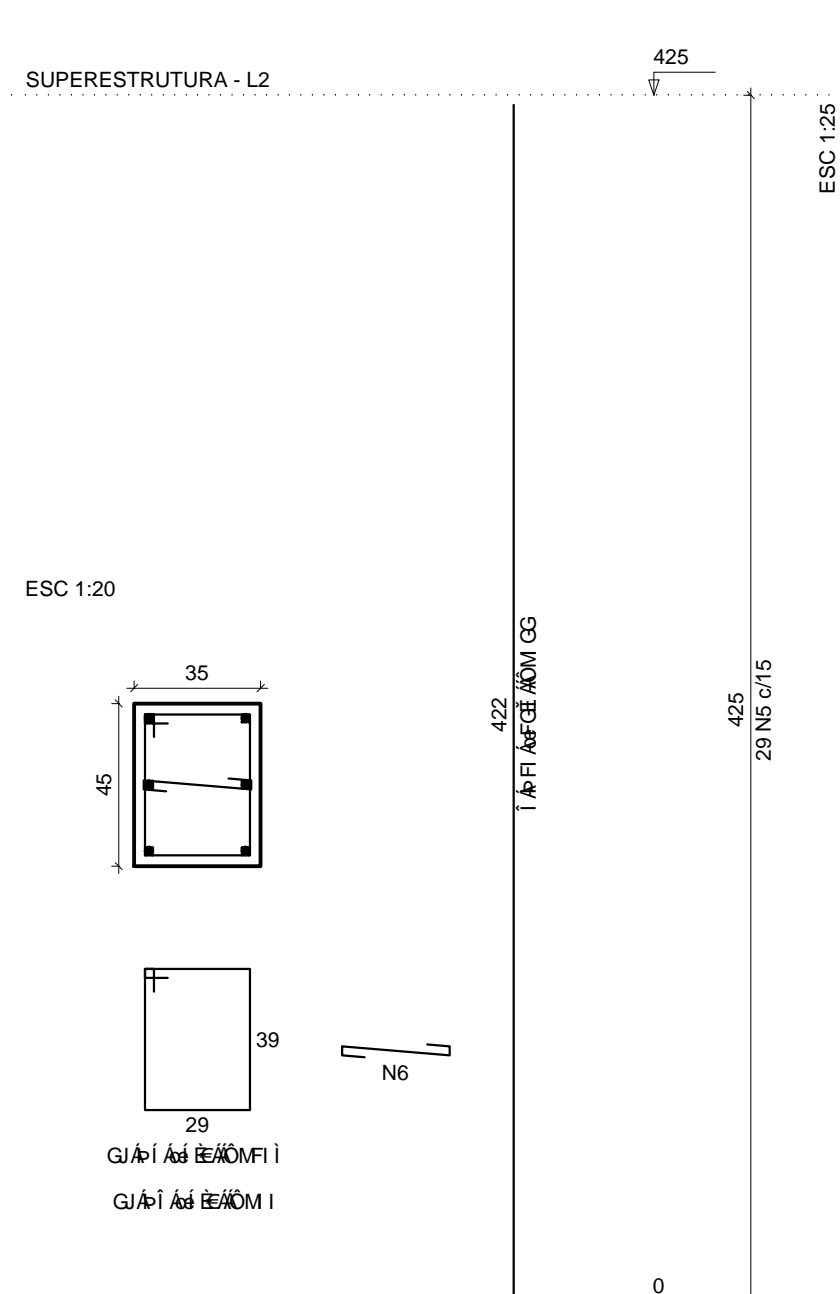
P10=P11



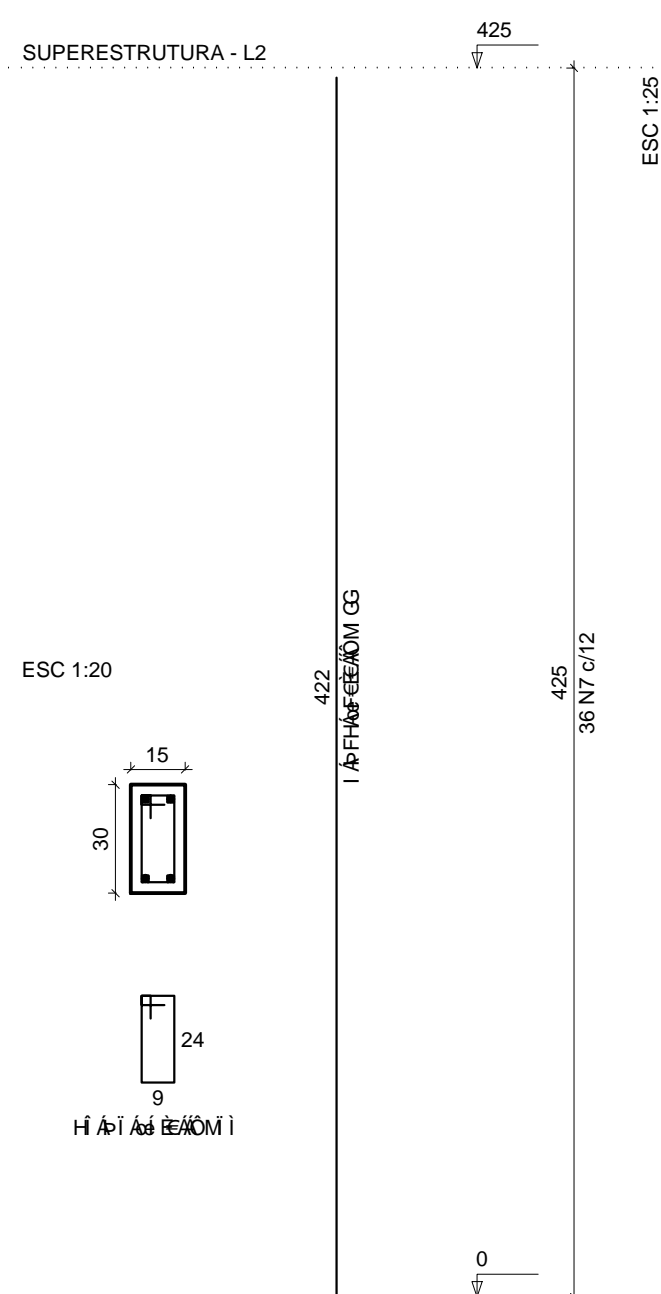
P3=P7



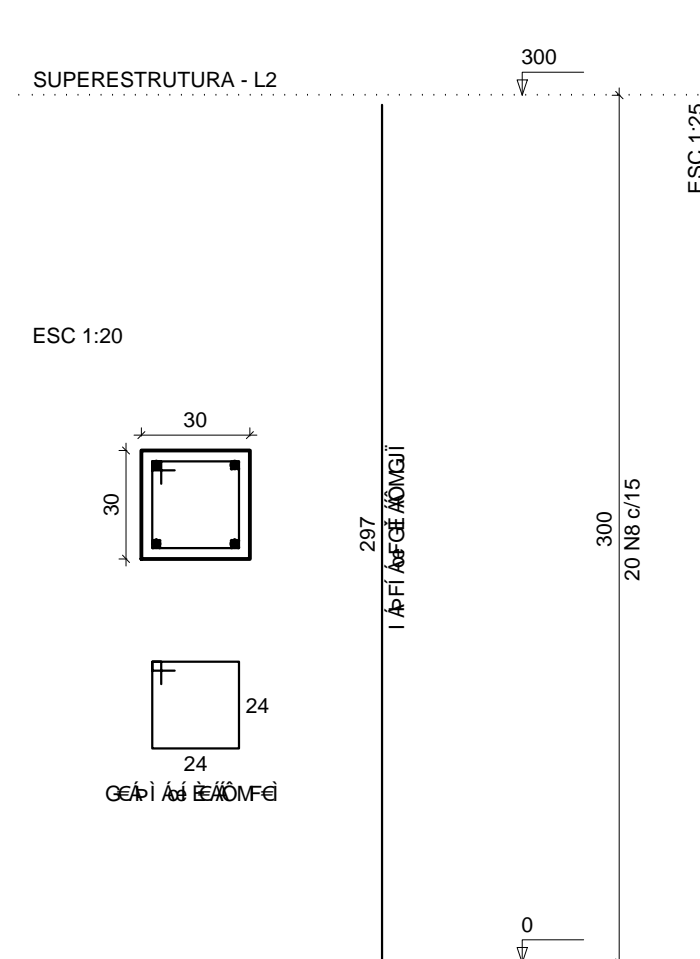
P4=P13=P14



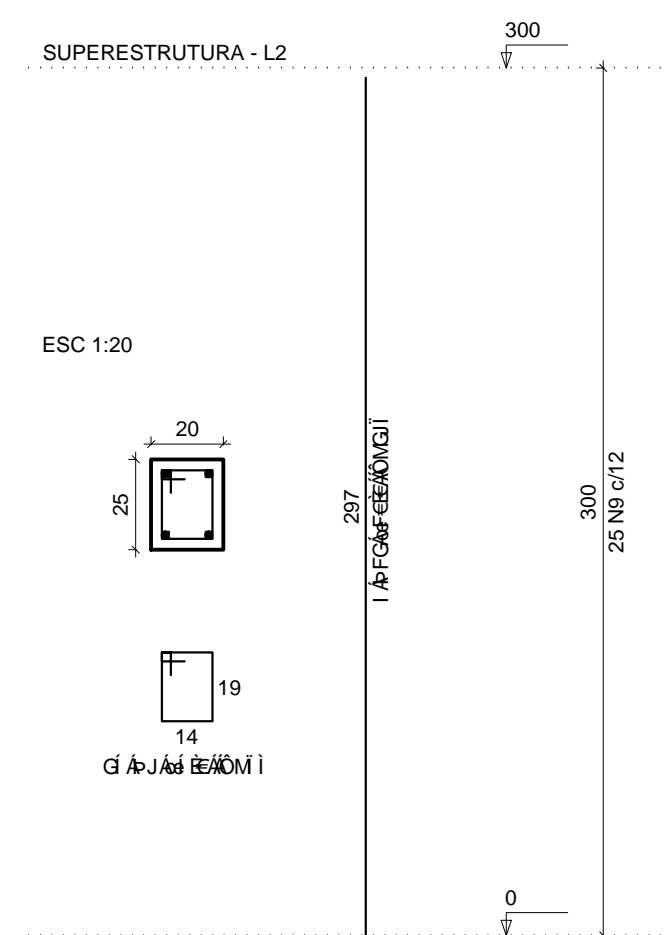
P6



P8



P9



TÍTULO GALPÃO DE RECICLAGEM - BAIRRO SUMARÉ - SOBRAL/CE

PROJETO ESTRUTURAL

ENDEREÇO : RUA TUBIBA - BAIRRO SUMARÉ

PROPRIETÁRIO SECOMP - SECRETARIA DE OBRAS, MOBILIDADE E SERVIÇOS PÚBLICOS
PREFEITURA MUNICIPAL DE SOBRAL

AUTOR DO PROJETO CARLOS EDUARDO BRATZ

RESPONSÁVEL TÉCNICO CARLOS EDUARDO BRATZ

CONTEÚDO - RADIE - BASE DA PRENSA HIDRÁULICA
- PILARES

DATA 06/12/2017 ESCALA INDICADA DESENHO CARLOS FOLHA 05/08

OBS: IMPRIMIR EM FOLHA A1

ÚA [asê [A [Á a a [Á [A a q ^) d A D U U U V U W W U C A D a [Á D

CE U	N	DIAM	Q	UNIT (cm)	C.TOTAL (cm)
CA60	1	5.0	87	128	11136
	2	5.0	25	68	1700
	3	5.0	72	138	9936
	4	5.0	144	39	5616
	5	5.0	87	148	12876
	6	5.0	87	44	3828
	7	5.0	86	78	6708
	8	5.0	20	108	2160
	9	5.0	25	78	1950
CA50	10	8.0	50	244	12200
	11	10.0	8	244	1952
	12	10.0	16	297	4752
	13	10.0	20	422	8440
	14	12.5	30	422	12660
	15	12.5	4	297	1188

ÚA [asê [A [Á a a [Á [A a q ^) d A D U U U V U W W U C A D a [Á D

CE U	DIAM	C.TOTAL (m)	PESO + 10% (kg)
CA50	8.0	122	53
	10.0	151.5	102.7
	12.5	138.5	146.7
CA60	5.0	559.1	94.8
PESO TOTAL			
CA50		302.4	
CA60		94.8	

X [asê [A [Á a a [Á [A a q ^) d A D U U U V U W W U C A D a [Á D
7 [asê [A [Á a a [Á [A a q ^) d A D U U U V U W W U C A D a [Á D