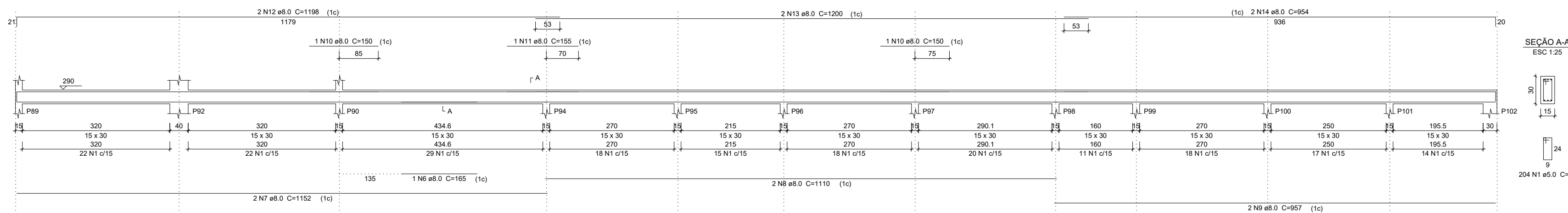
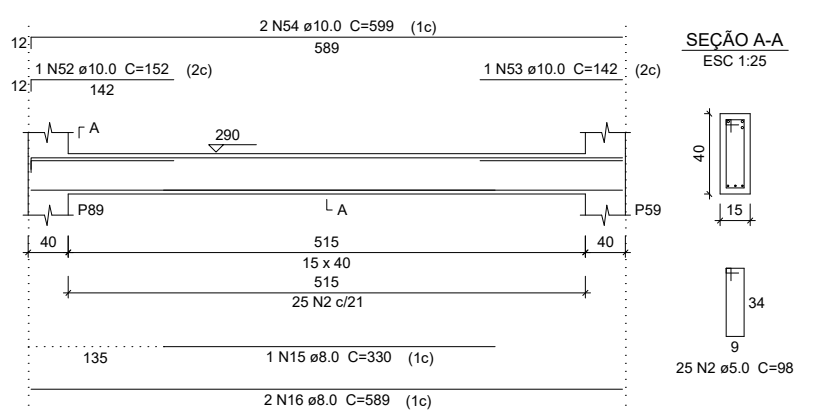


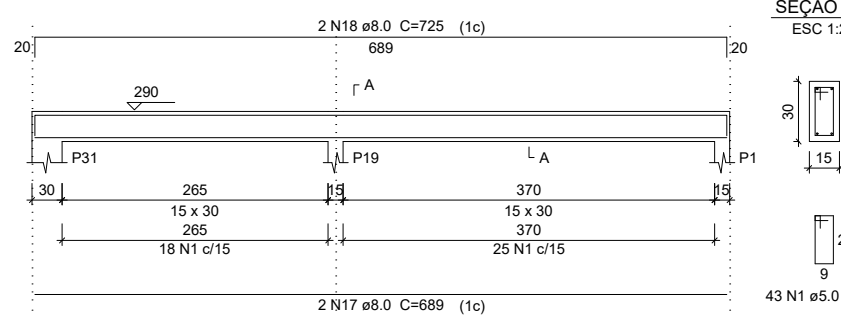
V15
ESC 1:50



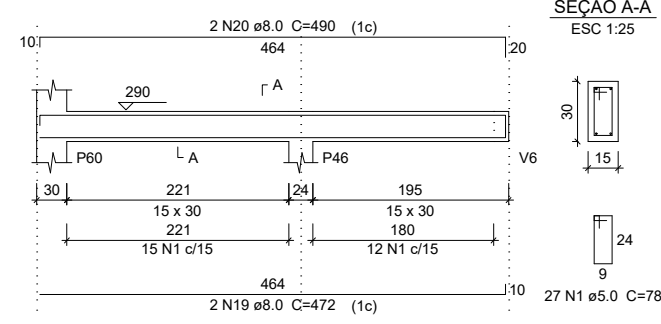
V16
ESC 1:50



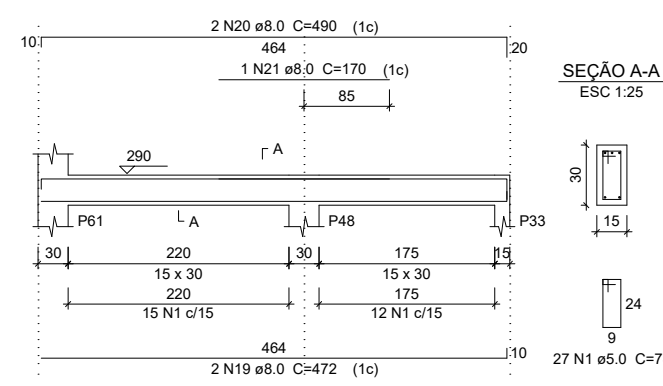
V17
ESC 1:50



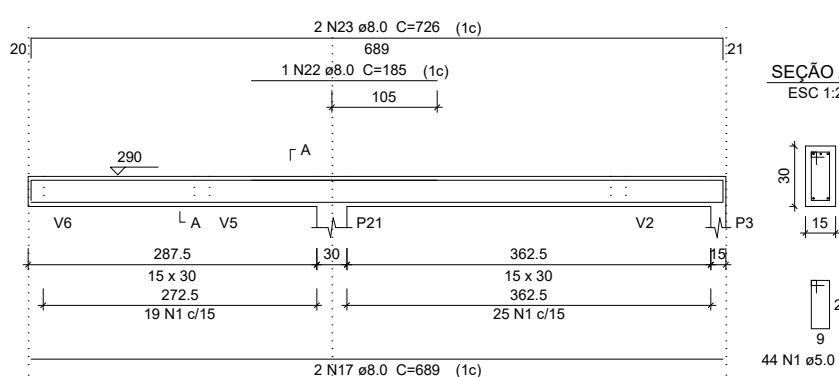
V18
ESC 1:50



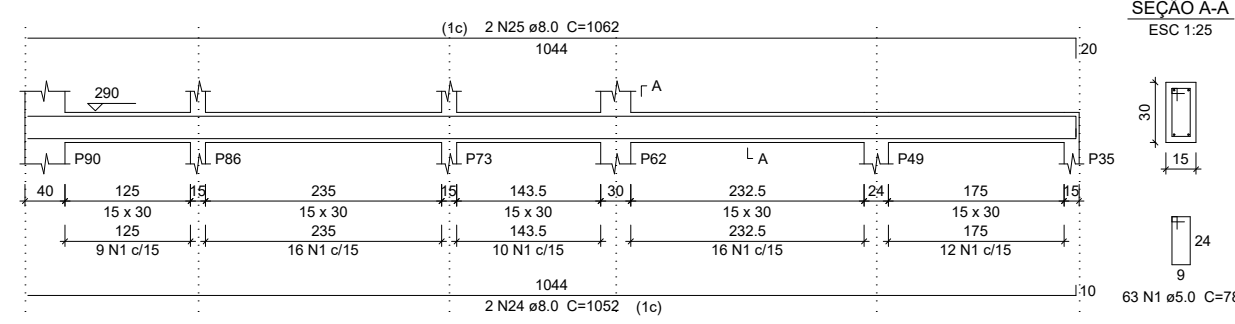
V19
ESC 1:50



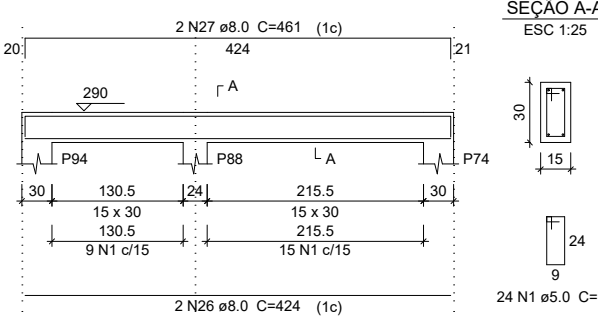
V20
ESC 1:50



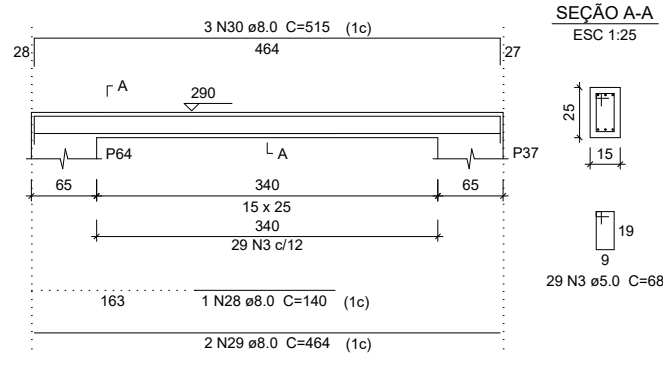
V21
ESC 1:50



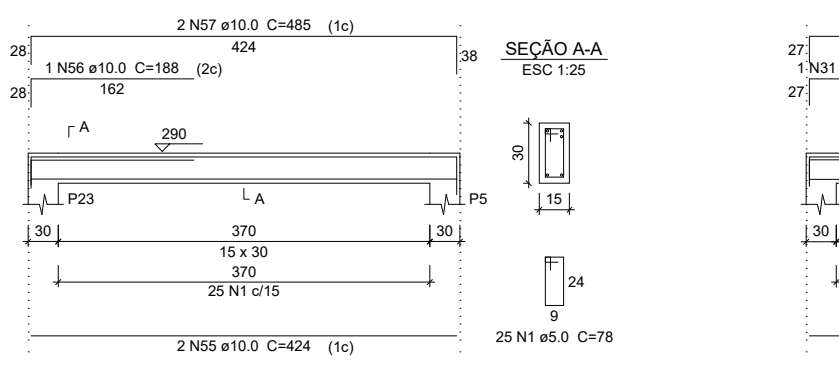
V22
ESC 1:50



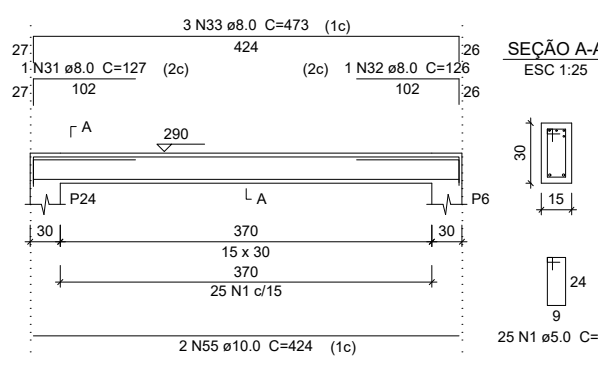
V23
ESC 1:50



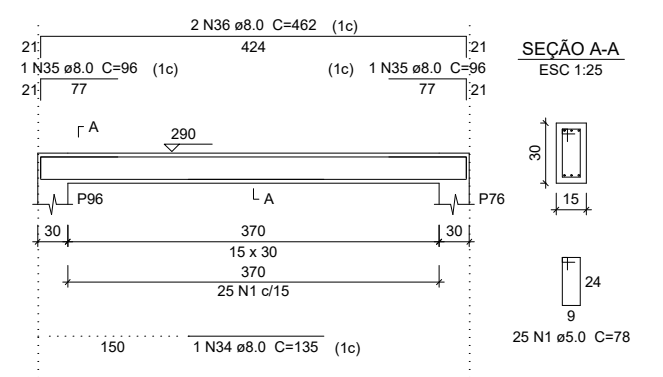
V24
ESC 1:50



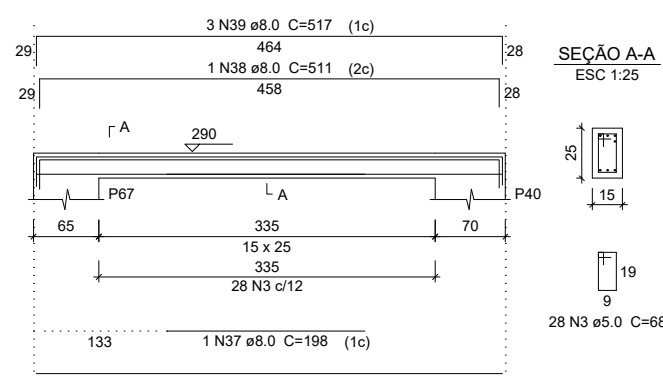
V25
ESC 1:50



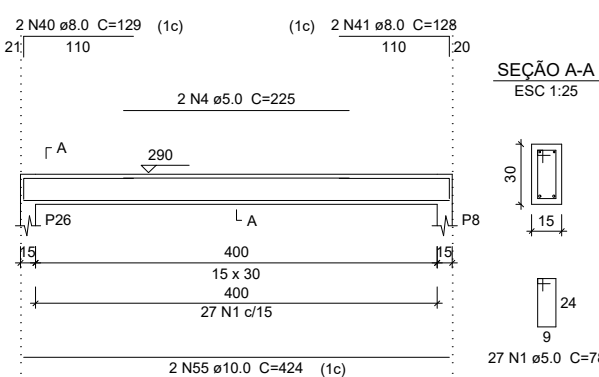
V26
ESC 1:50



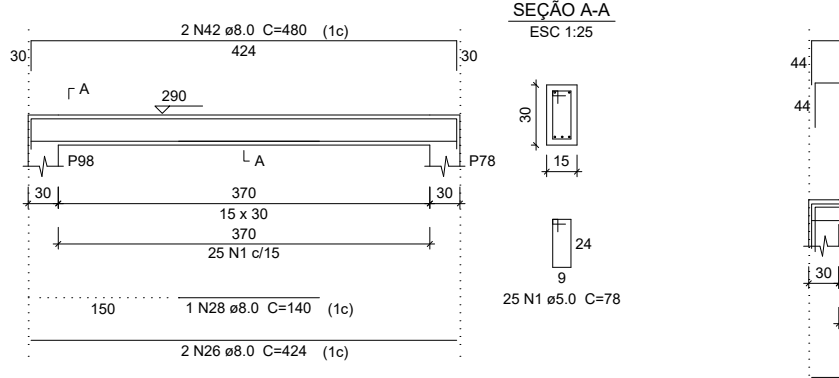
V27
ESC 1:50



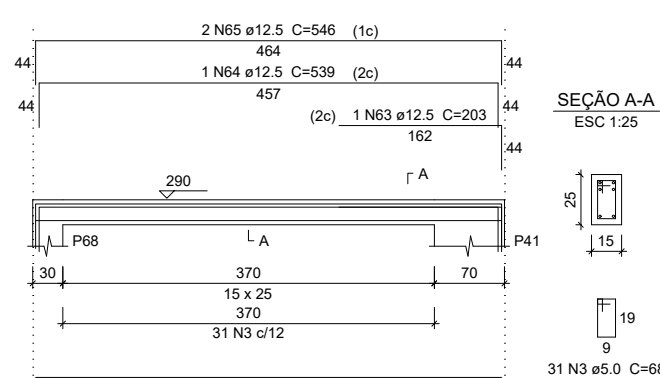
V28
ESC 1:50



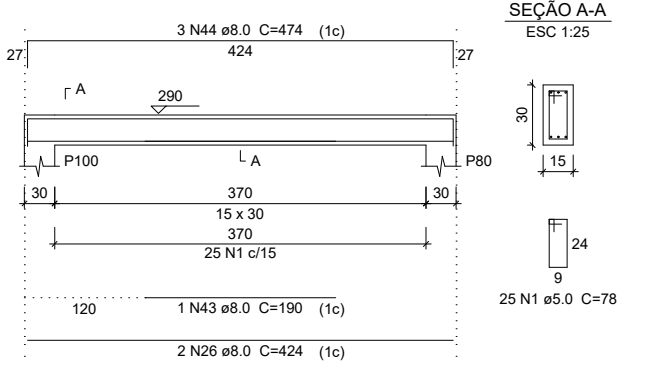
V29
ESC 1:50



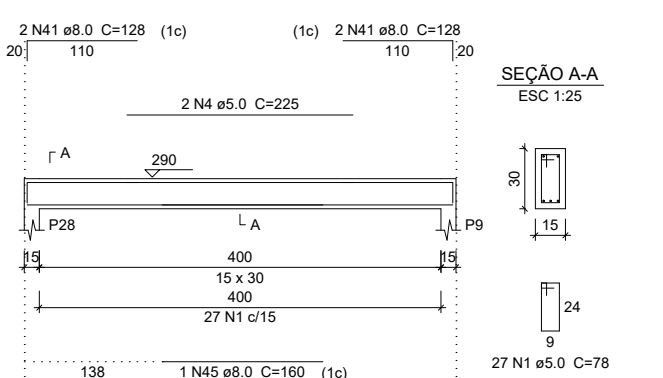
V30
ESC 1:50



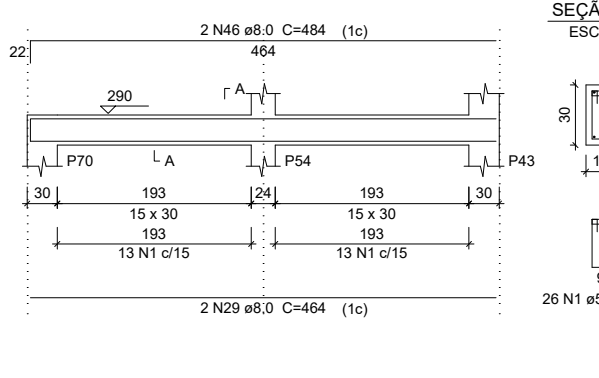
V31
ESC 1:50



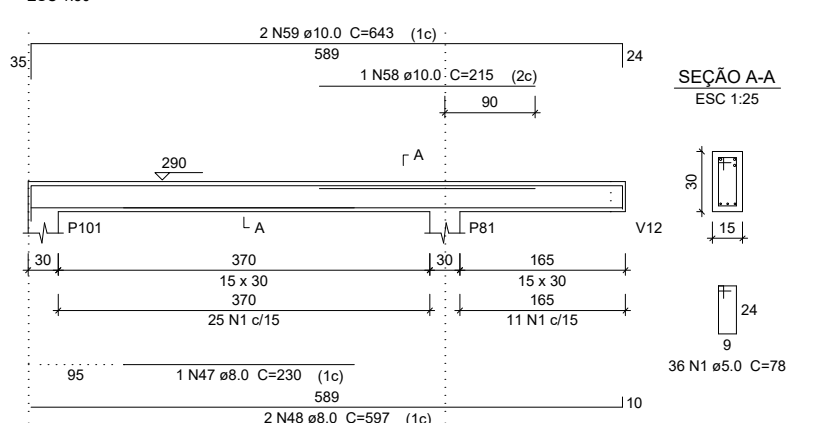
V32
ESC 1:50



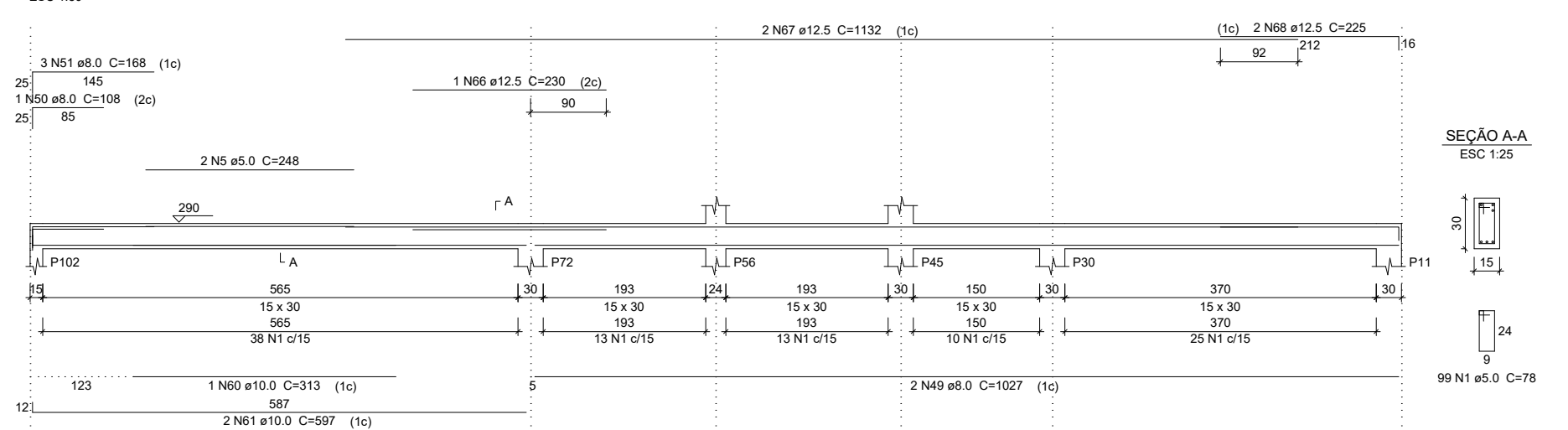
V33
ESC 1:50



V34
ESC 1:50



V35
ESC 1:50



Relação do aço

CAÇO	N	DIAM	Q	UNID	C TOTAL (cm)
V15	1	5.0	772	78	60216
V16	2	5.0	25	88	2450
V17	3	5.0	88	68	5984
V18	4	5.0	4	225	900
V19	5	5.0	2	248	496
V20	6	5.0	1	165	165
V21	7	8.0	2	1152	2304
V22	8	8.0	2	1150	2300
V23	9	8.0	2	957	1914
V24	10	8.0	2	150	300
V25	11	8.0	2	105	155
V26	12	8.0	2	1198	2396
V27	13	8.0	2	1200	2400
V28	14	8.0	2	954	1908
V29	15	8.0	1	330	330
V30	16	8.0	2	725	1450
V31	17	8.0	4	689	2756
V32	18	8.0	2	725	1450
V33	19	8.0	4	472	1888
V34	20	8.0	4	490	1960
V35	21	8.0	1	170	170
	22	8.0	1	185	185
	23	8.0	2	726	1452
	24	8.0	2	1052	2104
	25	8.0	2	1062	2124
	26	8.0	10	424	4240
	27	8.0	6	464	2784
	28	8.0	2	140	280
	29	8.0	6	464	2784
	30	8.0	3	517	1551
	31	8.0	1	127	127
	32	8.0	1	125	125
	33	8.0	3	473	1419
	34	8.0	1	158	158
	35	8.0	2	96	192
	36	8.0	2	452	904
	37	8.0	1	198	198
	38	8.0	1	511	511
	39	8.0	3	517	1551
	40	8.0	2	129	258
	41	8.0	6	128	768
	42	8.0	2	480	960
	43	8.0	1	190	190
	44	8.0	3	474	1422
	45	8.0	1	160	160
	46	8.0	2	484	968
	47	8.0	1	230	230
	48	8.0	2	997	1994
	49	8.0	2	1027	2054
	50	8.0	1	108	108
	51	8.0	3	168	504
	52	10.0	1	152	152
	53	10.0	1	142	142
	54	10.0	2	598	1196
	55	10.0	6	424	2544
	56	10.0	1	188	188
	57	10.0	2	485	970
	58	10.0	1	215	215
	59	10.0	2	643	1286
	60	10.0	1	313	313
	61	10.0	2	597	1194
	62	12.5	2	464	928
	63	12.5	1	203	203
	64	12.5	1	539	539
	65	12.5	2	545	1090
	66	12.5	1	230	230
	67	12.5	2	1132	2264
	68	12.5	2	225	450

Resumo do aço

CAÇO	DIAM	C TOTAL	PESO
CAÇO	8.0	531.3	208.6
CAÇO	10.0	82.1	50.6
CAÇO	12.5	67.1	55
CAÇO	5.0	709.5	108
CAÇO			315.2
CAÇO			108

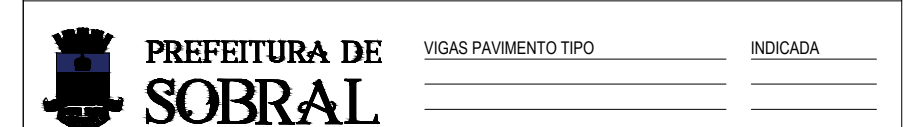
Vol. de concreto total (C-25) = 6.61 m³
Área de forma total = 110.29 m²

SECOMP - SECRETARIA DE OBRAS, MOBILIDADE E SERVIÇOS PÚBLICOS

PROJETO: CSF- CAMPO DOS VELHOS PROJETO ESTRUTURAL

INTERESSADO: PREFEITURA DE SOBRAL
ENDEREÇO: BARRIO CAMPO DOS VELHOS
MUNICÍPIO: SOBRAL-CE

AUTOR: ENG. CARLOS EDUARDO BRATZ
CREA - 321948



DATA: MAIO/2019
REVISÃO:
ARQUIVO:
PÁGINA: 09/22

09/05/2019
10/05/2019
11/05/2019
12/05/2019
13/05/2019
14/05/2019
15/05/2019
16/05/2019
17/05/2019
18/05/2019
19/05/2019