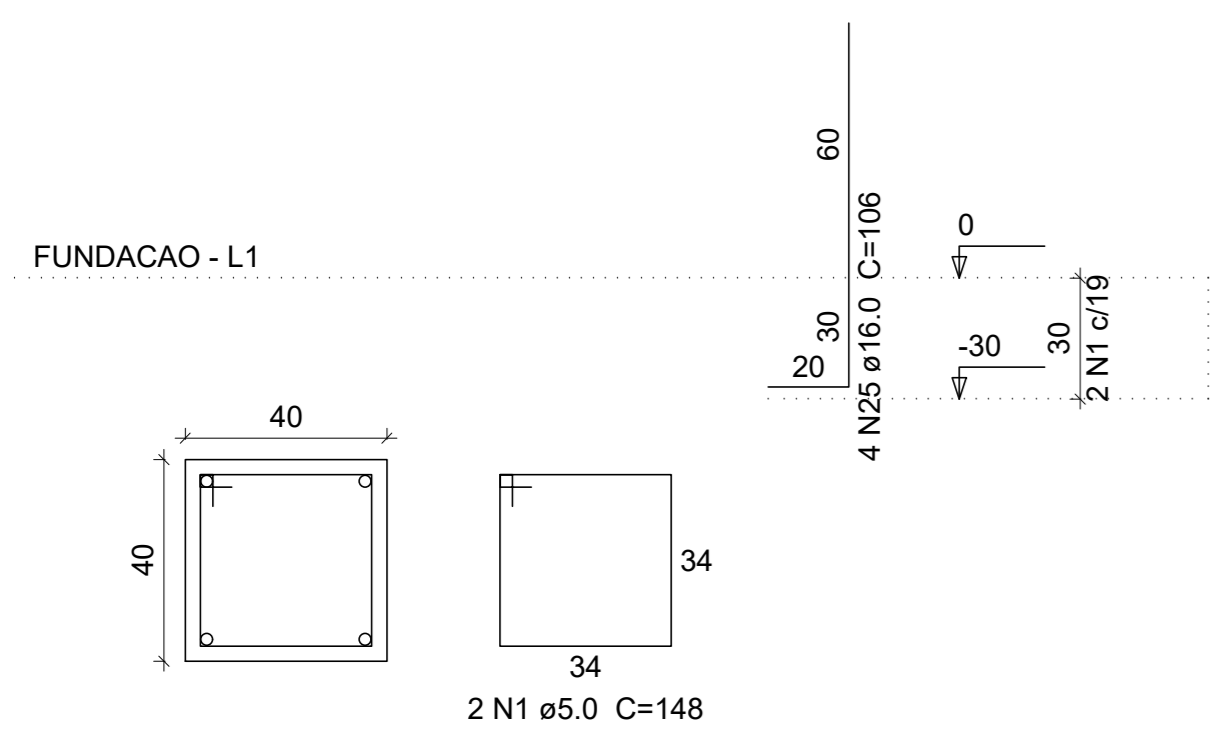
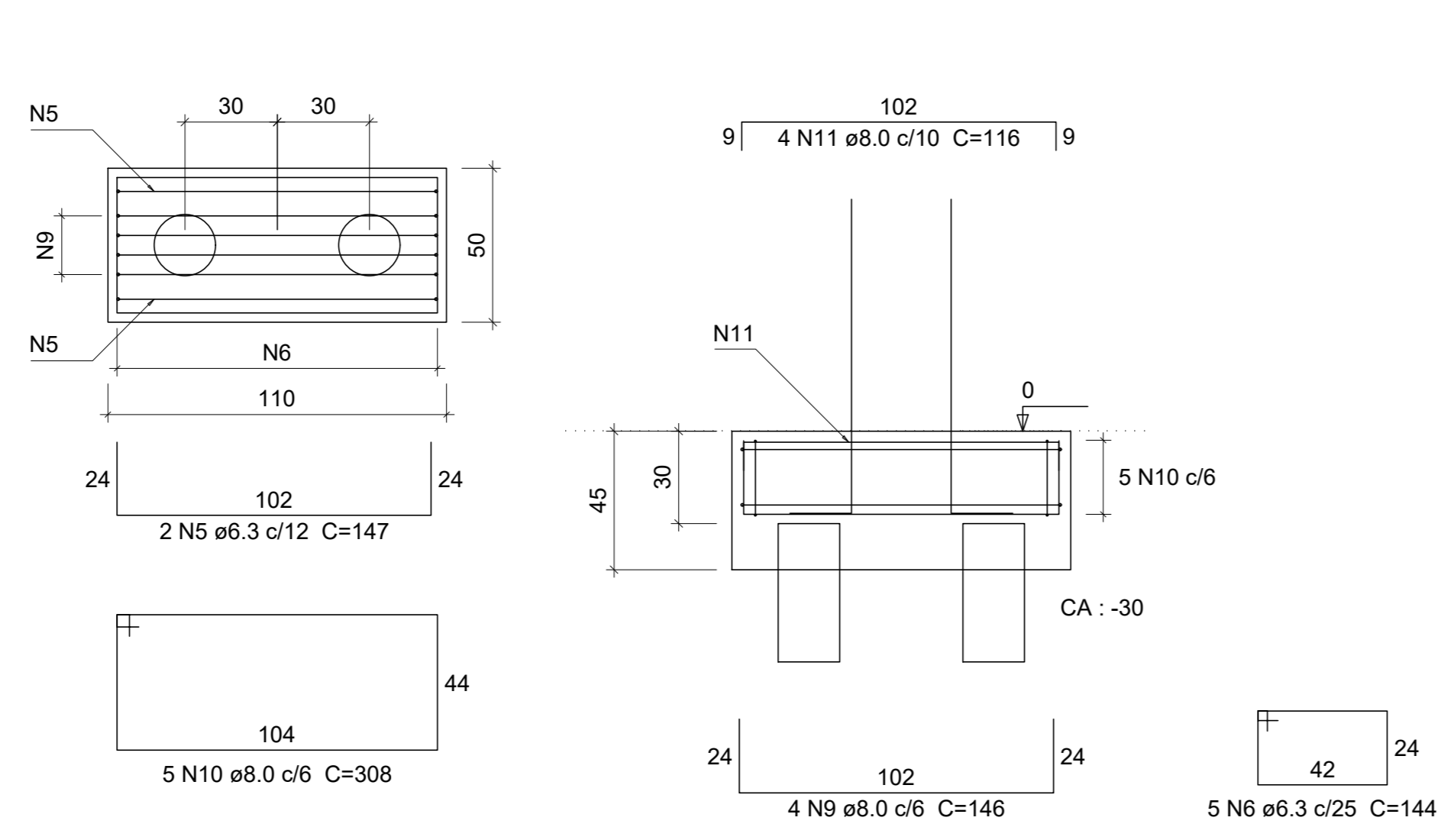


P3=P5=P7=P9=P11

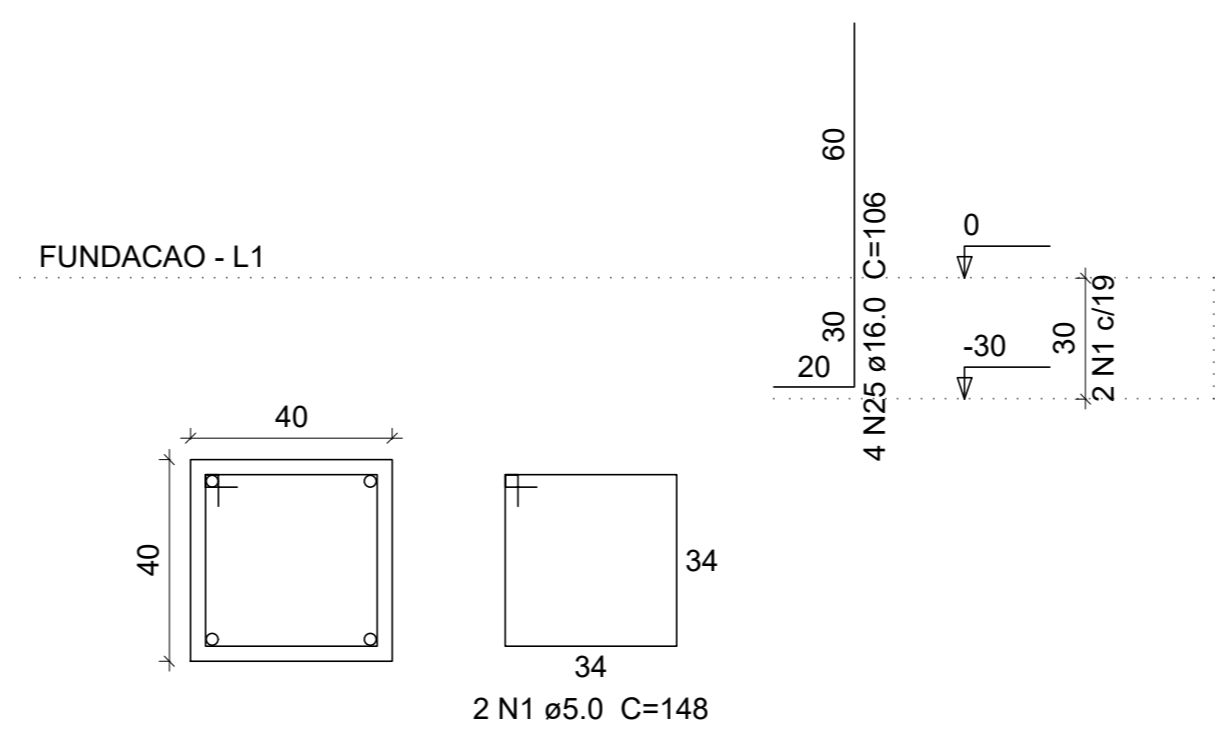


B3=B5=B7=B9=B11
2ø20

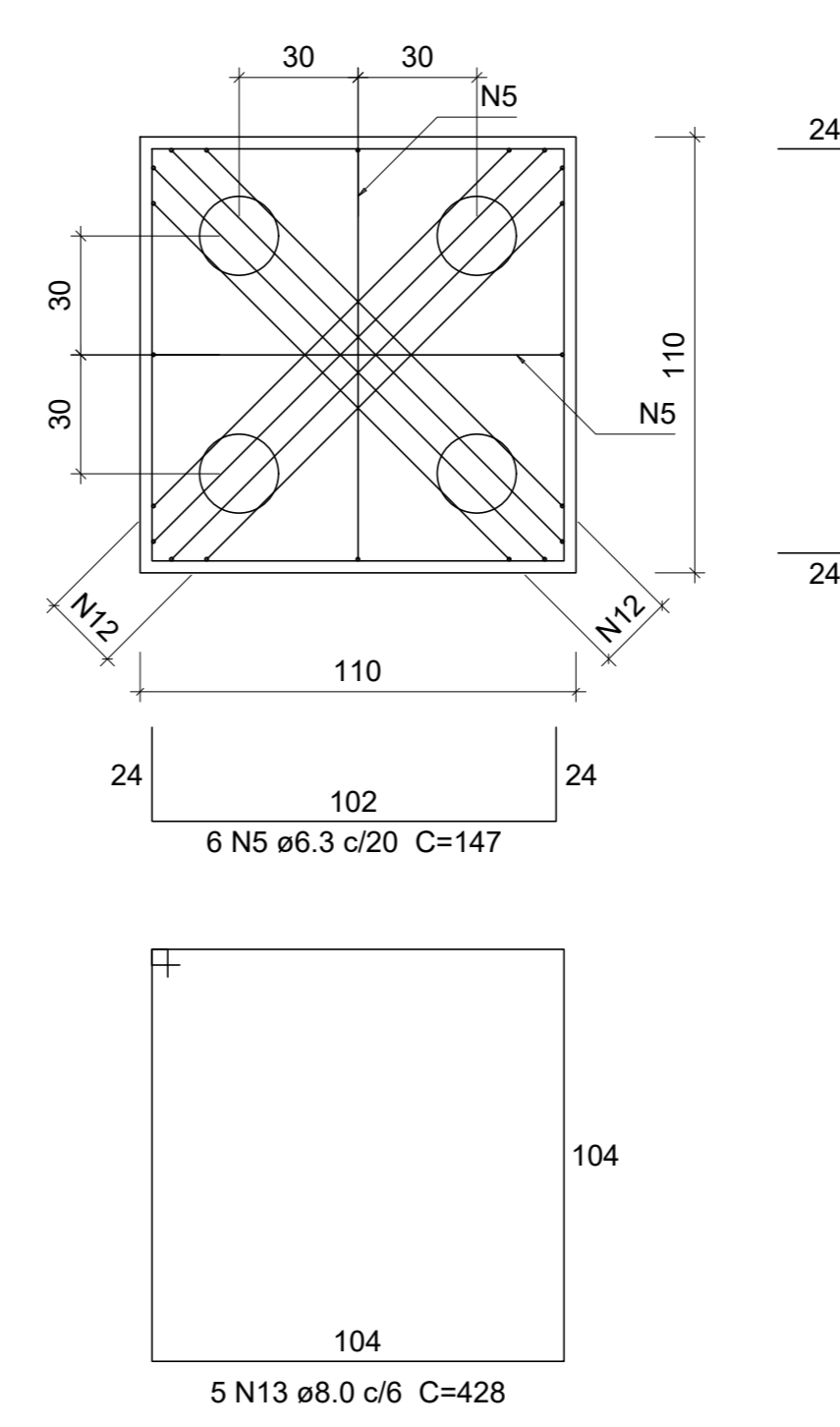


CORTE
ESC 1:25

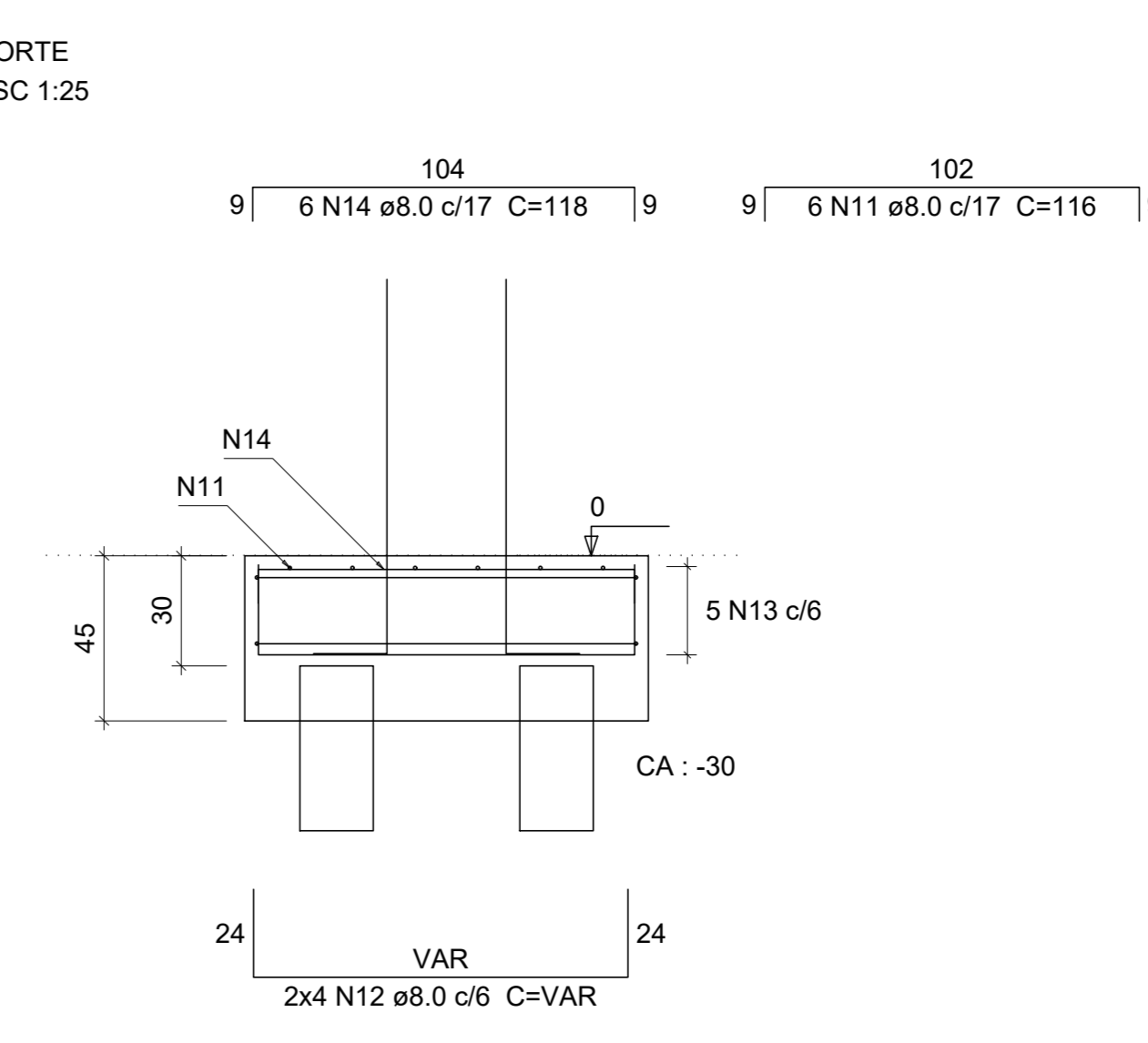
P14



B14
4ø20
PLANTA
ESC 1:25



CORTE
ESC 1:25

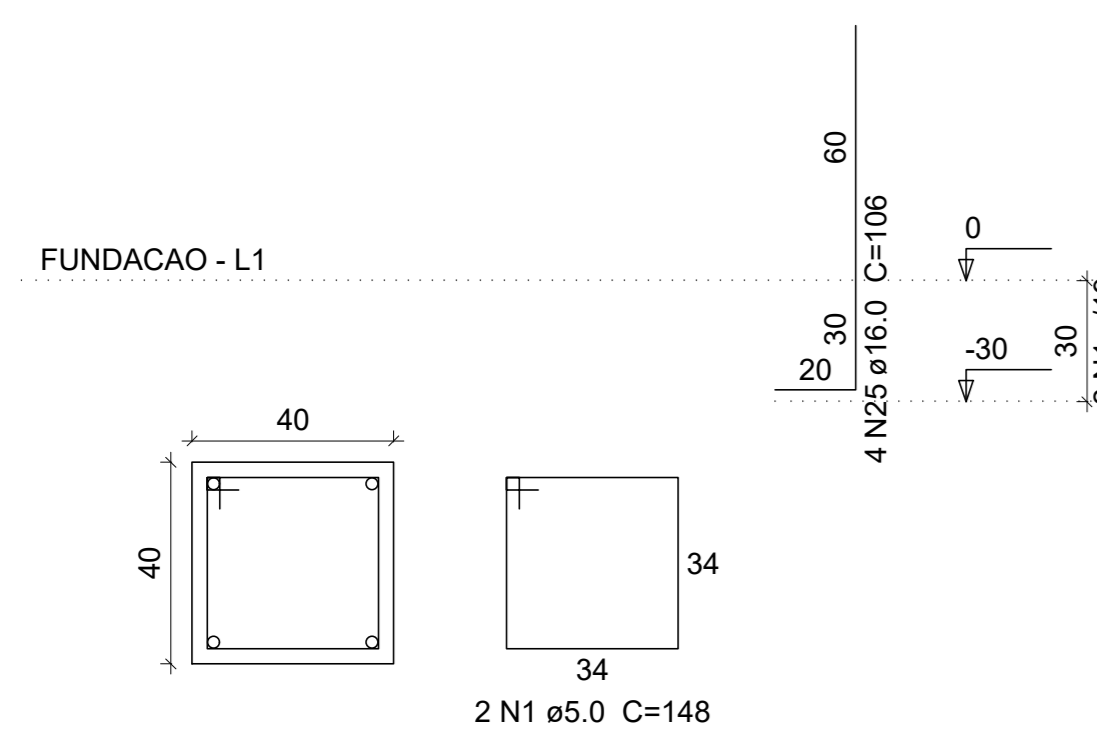


Relação do aço

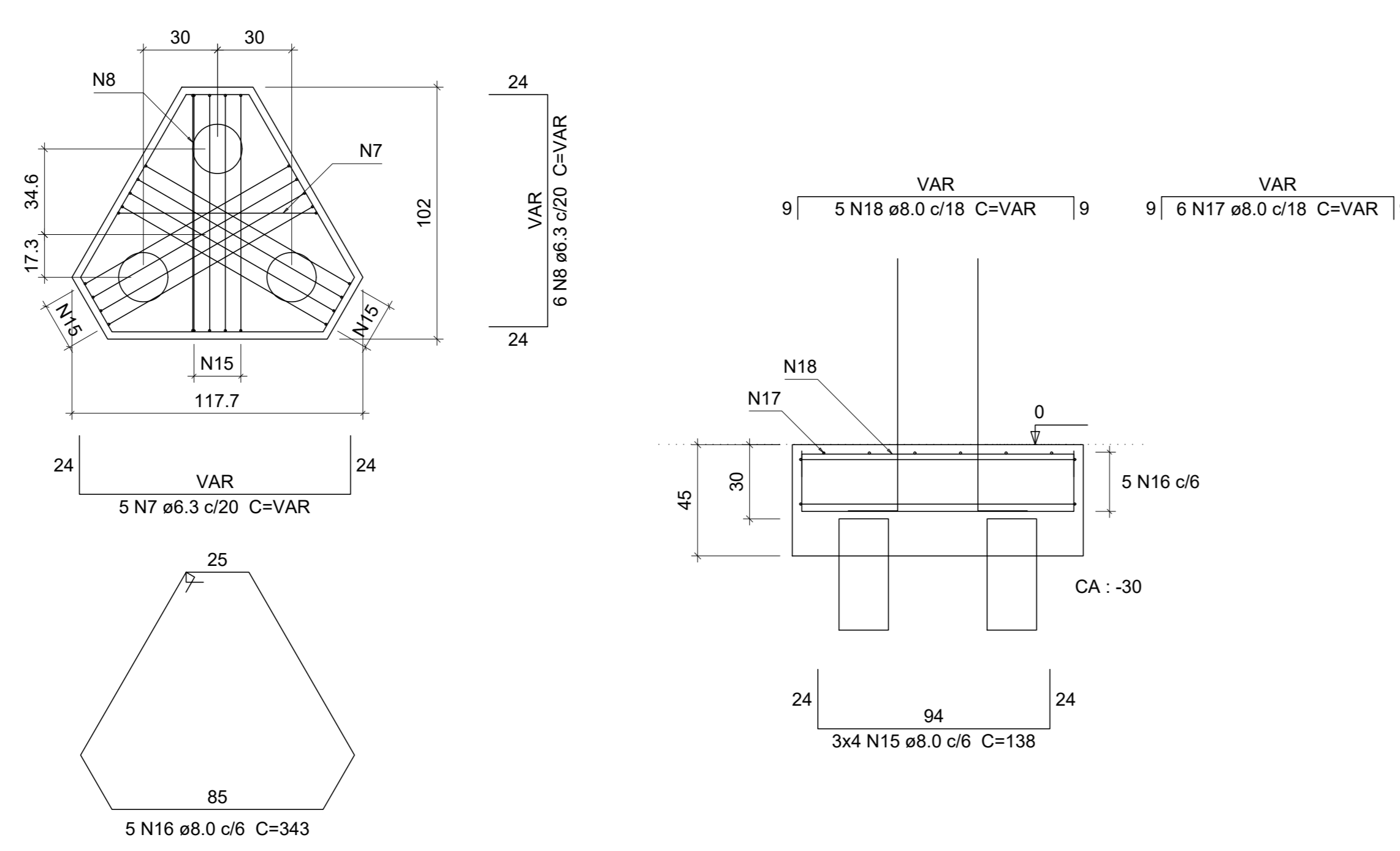
LAJE:	7xP3	V5
	V6	V7
	V8	V9
	V10	V11
	V12	V13
	V14	V15
	V19	V20
fundacao:	5x811	B14
	B15	

AÇO	N	DIAM	Q	UNIT (cm)	C.TOTAL (cm)
CA60	1	5.0	91	148	13468
	2	5.0	90	78	7020
	3	5.0	330	80	26400
CA50	4	5.0	112	106	11872
	5	6.3	22	147	3234
	6	6.3	25	144	3600
	7	6.3	5	VAR	VAR
	8	6.3	6	VAR	VAR
	9	8.0	20	146	2920
	10	8.0	25	308	7700
	11	8.0	26	116	3016
	12	8.0	8	VAR	VAR
	13	8.0	5	428	2140
	14	8.0	6	118	708
	15	8.0	12	138	1656
	16	8.0	5	343	1715
	17	8.0	6	VAR	VAR
	18	8.0	5	VAR	VAR
	19	10.0	12	194	2328
	20	10.0	12	225	2700
	21	10.0	38	209	7942
	22	10.0	10	237	2370
	23	12.5	3	201	603
	24	12.5	30	216	6480
	25	16.0	28	106	2968
	26	16.0	28	197	5516

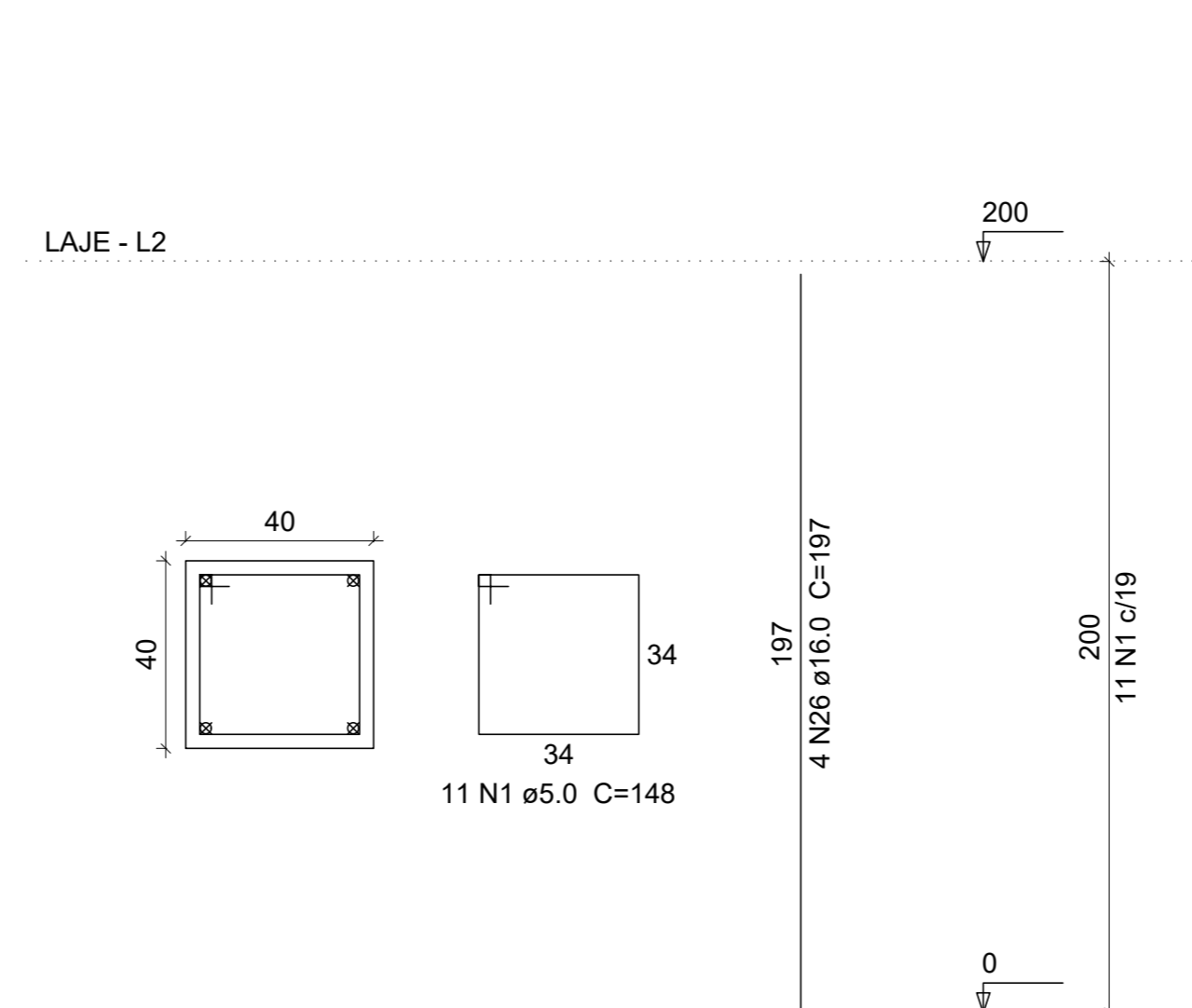
P15



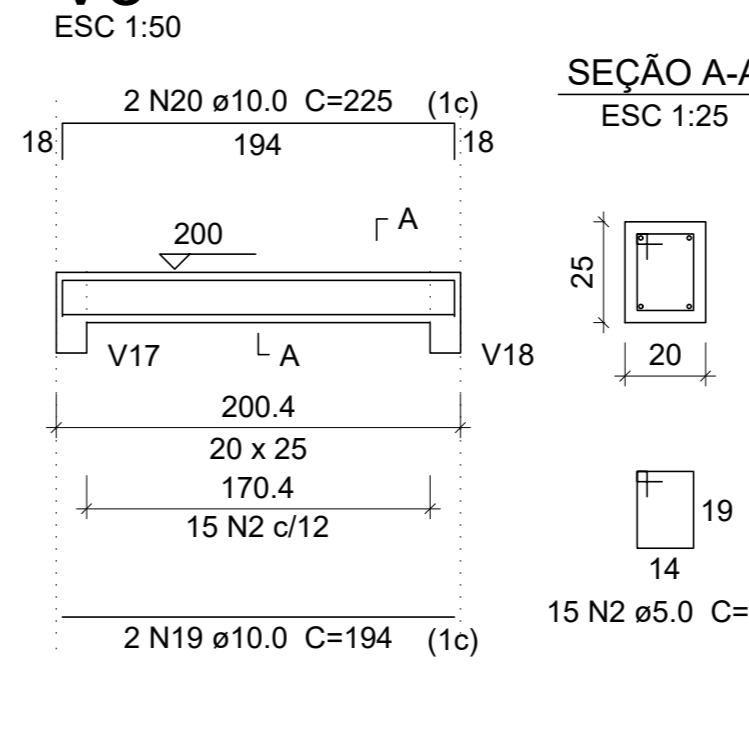
B15
3ø20
PLANTA
ESC 1:25



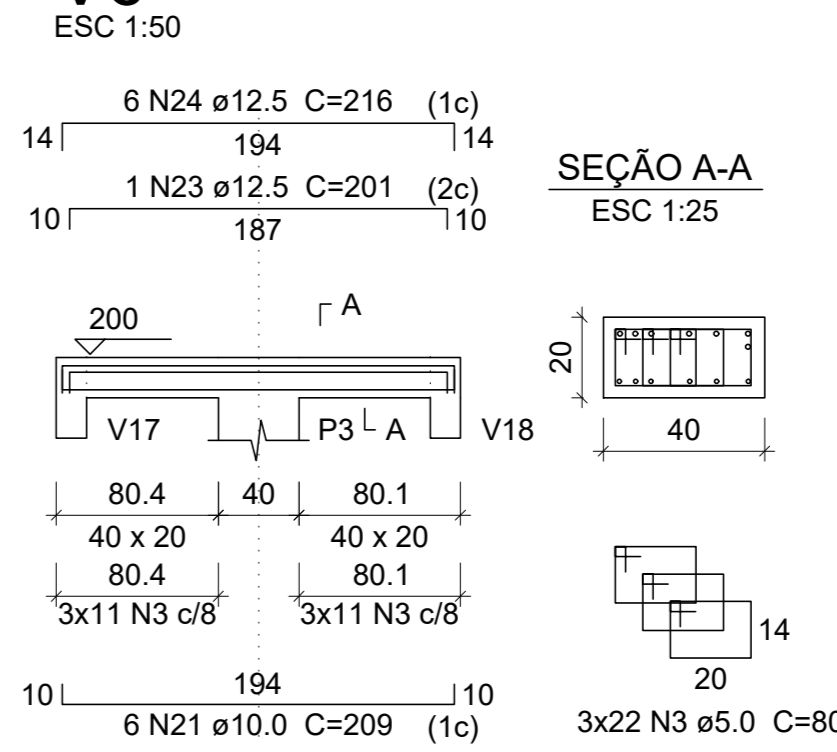
P3=P5=P7=P9=P11=P14=P15



V5



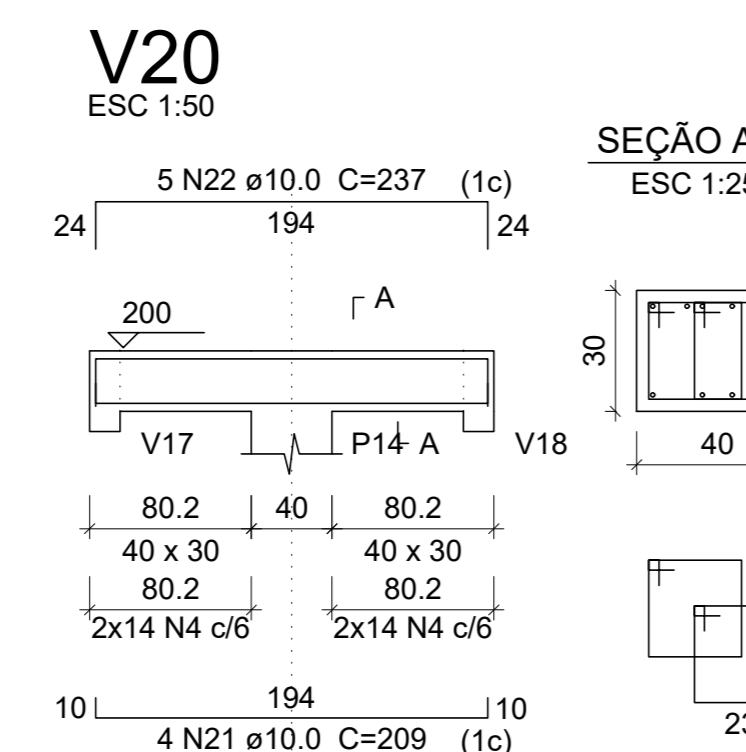
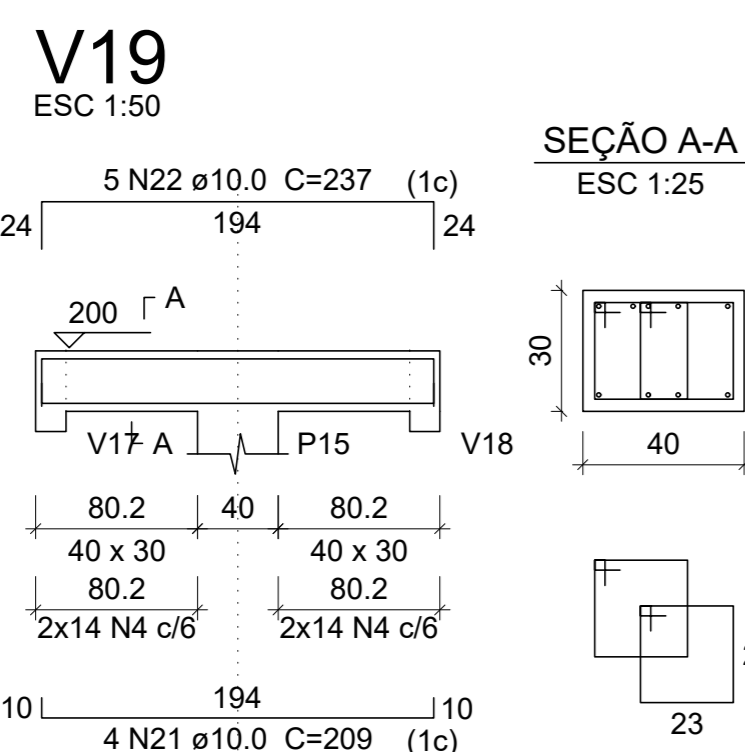
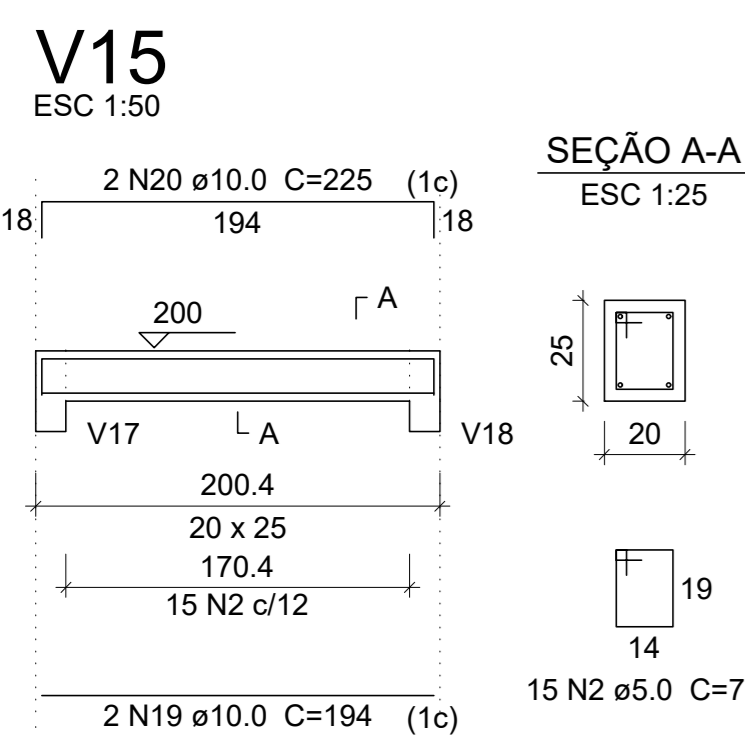
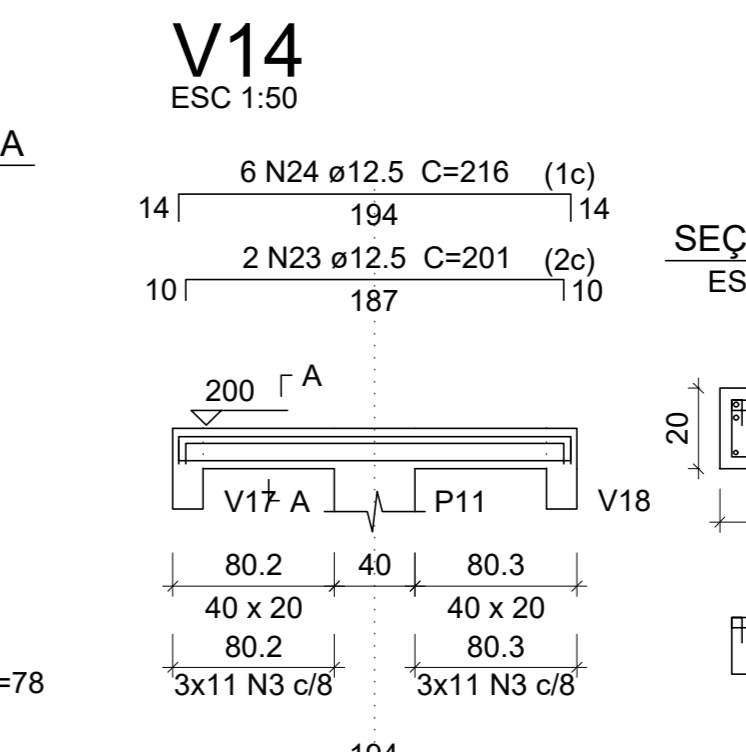
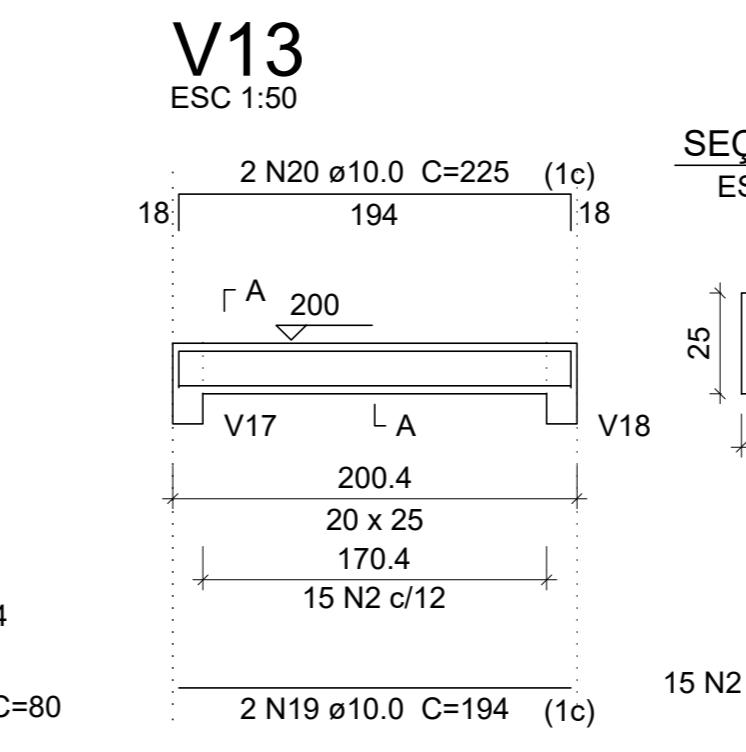
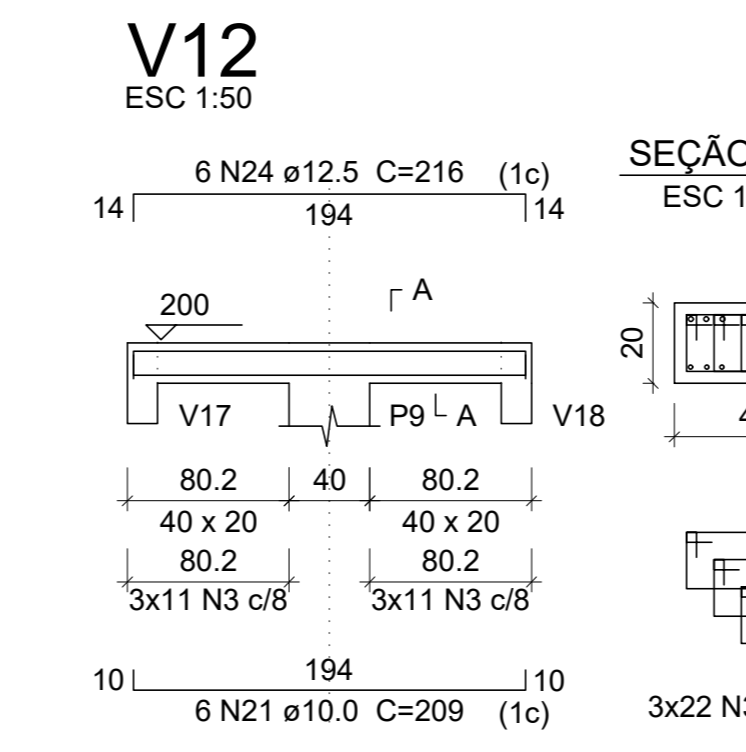
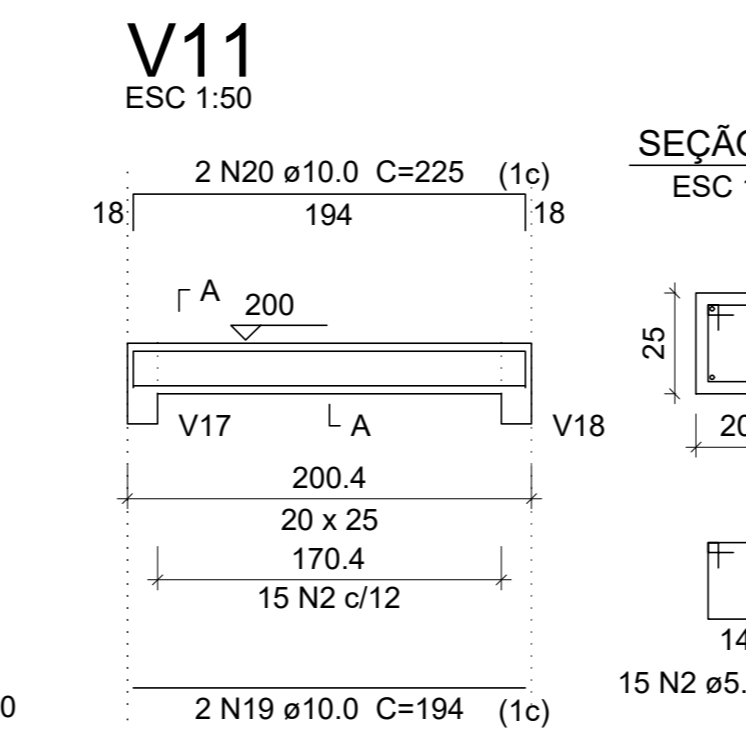
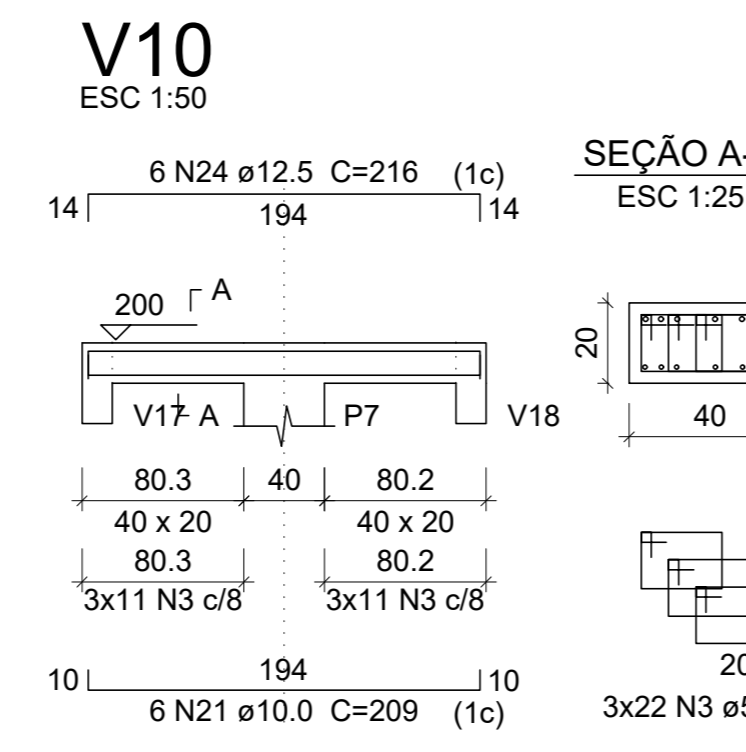
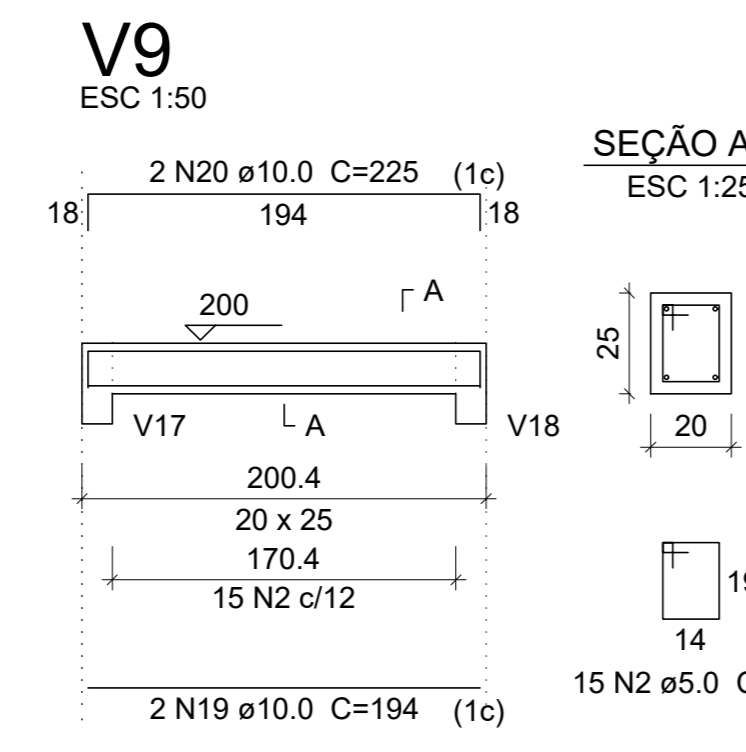
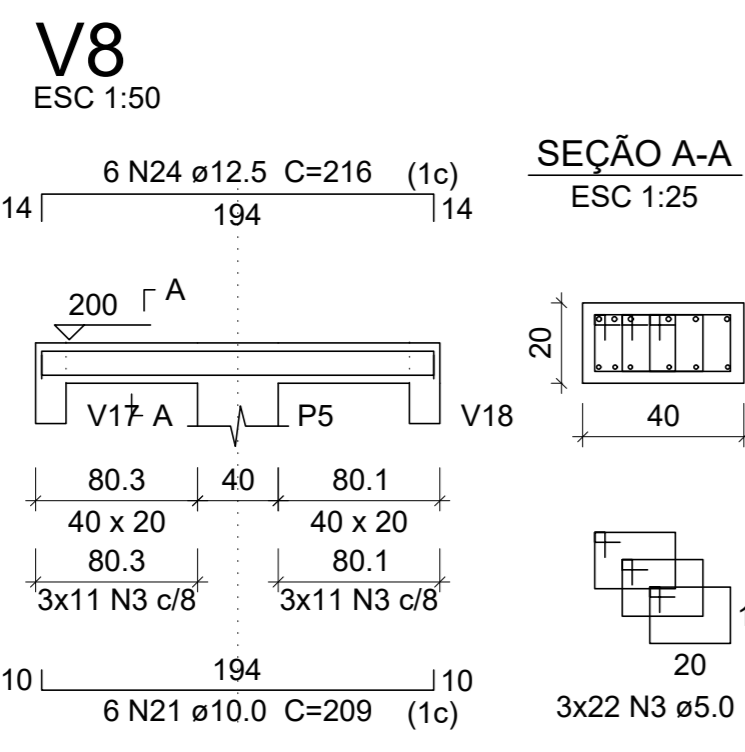
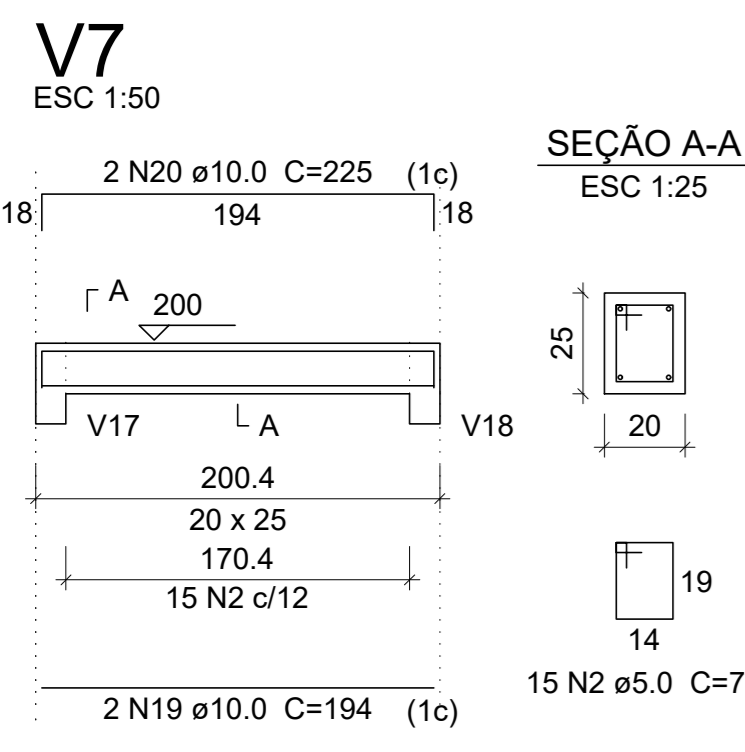
V6



Resumo do aço

AÇO	DIAM	C.TOTAL (m)	PESO + 10 % (kg)
CA50	6.3	84.5	22.7
	8.0	223.1	96.8
	10.0	153.4	104
	12.5	70.9	75.1
	16.0	84.9	147.3
CA60	5.0	587.6	99.6
PESO TOTAL			
CA50	445.9		
CA60	99.6		

Vol. de concreto total (C-25) = 6.53 m³
Área de forma total = 56.98 m²



UGP-I SEUMA
Secretaria do Urbanismo e Meio Ambiente
PREFEITURA DE SOBRAL

PROJETO ESTRUTURAL

PROPRIETÁRIO: PREFEITURA MUNICIPAL DE SOBRAL
LOCAL: AVENIDA DA UNIVERSIDADE, BAIRRO BETÂNIA - SOBRAL - CE

CONTEÚDO:
1. BLOCOS E VIGAS
2. ...

FASE DO PROJETO: EXECUTIVO
ESCALA: INDICADA
DATA: DEZEMBRO / 2017
PRANCHAS: 05/06

EQUIPE TÉCNICA:
ARQ. CAMPELO COSTA
ARQ. ANDRÉ CARVALHO
ARQ. MARCELY BARREIRA
ENGR. KEMISON LUIZ
ENGR. NAZARENO LINHARES
ENGR. CARLOS TEODORO BRATZ
RESERVA DE PROPRIEDADE INTELECTUAL
A PROPRIEDADE INTELECTUAL DO PRESENTE PROJETO É RESERVADA A SEUS AUTORES, DE ACORDO COM A LEGISLAÇÃO PERTINENTE. O USO DESTES PRODUTOS OU DE QUALQUER DE SEUS ELEMENTOS, QUE NÃO FORMAR OS DETERMINADOS, SERÃO CONSIDERADOS COMO APROPRIAÇÃO ILÍCITA E SERÃO PUNIDAS AS LEIS QUE DEFIÑEM DITOS DIREITOS A TODOS OS EFEITOS.