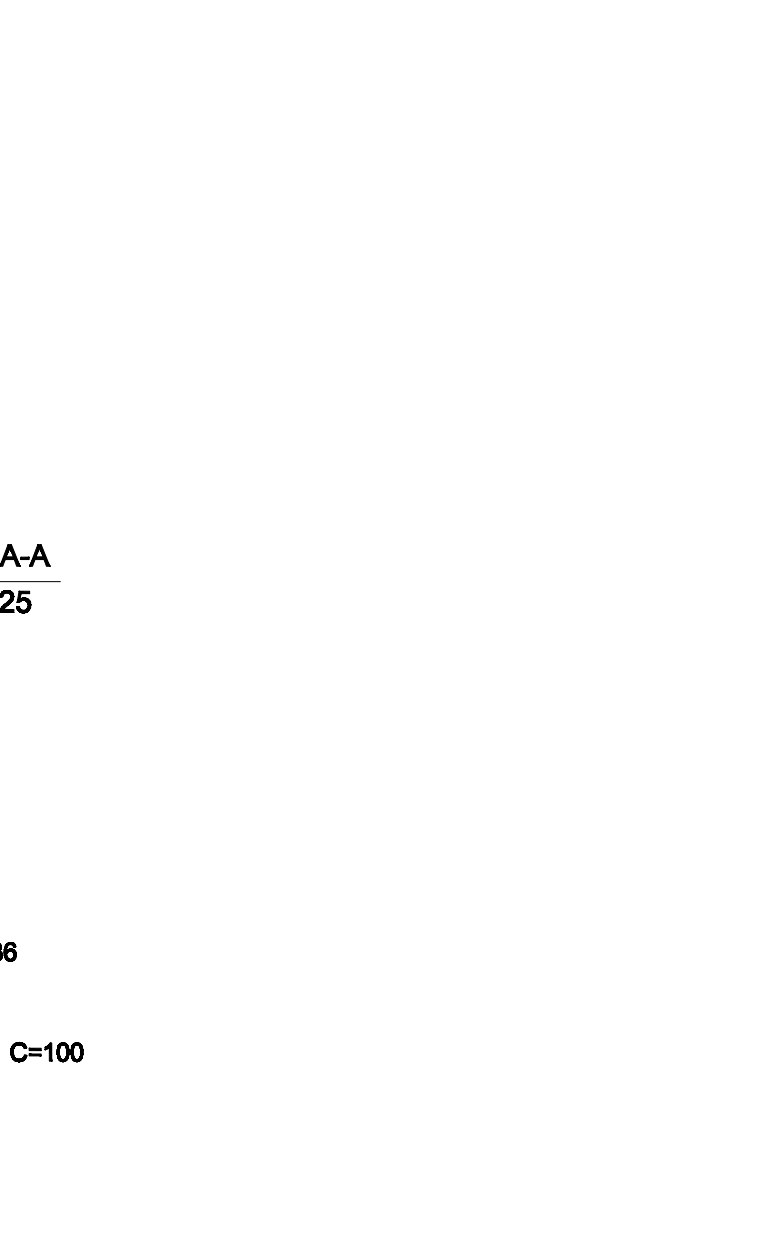
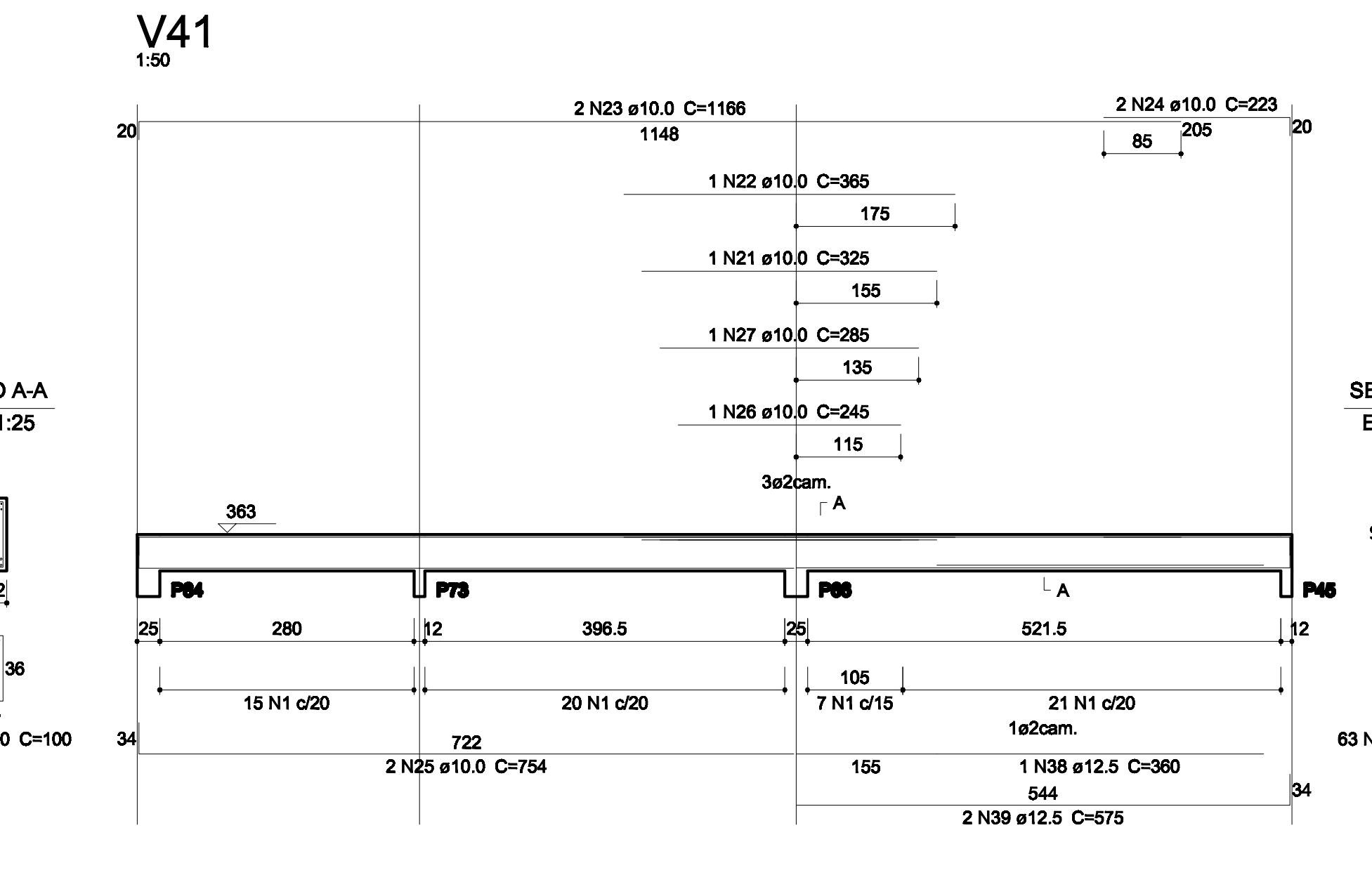
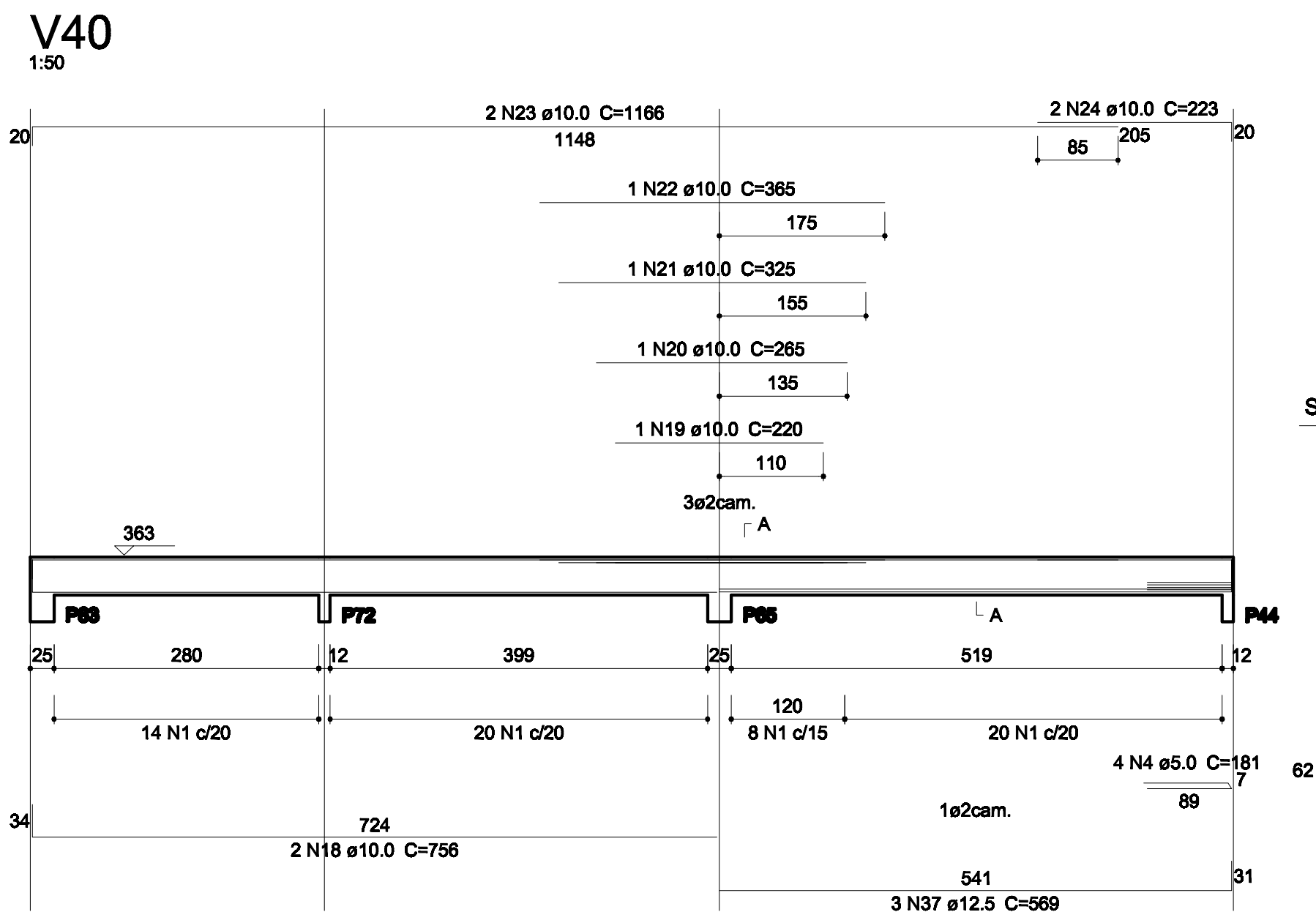


Relação do aço

ACO	N	DIAM	Q	UNIT (cm)	C.TOTAL (cm)
CA60	1	5.0	464	100	46400
	2	5.0	1	179	179
	3	5.0	20	80	1600
	4	5.0	4	181	724
CA50	5	10.0	1	200	200
	6	10.0	2	1073	2146
	7	10.0	2	192	384
	8	10.0	2	1059	2118
	9	10.0	2	215	430
	10	10.0	4	760	3040
	11	10.0	1	345	345
	12	10.0	4	580	2320
	13	10.0	1	713	713
	14	10.0	4	1182	4728
	15	10.0	2	236	472
	16	10.0	2	374	748
	17	10.0	2	356	712
	18	10.0	2	756	1512
	19	10.0	1	220	220
	20	10.0	1	265	265
	21	10.0	2	325	650
	22	10.0	2	365	730
	23	10.0	4	1166	4664
	24	10.0	4	223	892
	25	10.0	2	754	1508
	26	10.0	1	245	245
	27	10.0	1	285	285
	28	10.0	1	355	355
	29	10.0	1	698	698
	30	10.0	2	220	440
	31	10.0	2	740	1480
	32	10.0	1	350	350
	33	10.0	2	574	1148
	34	10.0	2	964	1928
	35	10.0	2	1091	2182
	36	10.0	2	1079	2158
	37	12.5	3	569	1707
	38	12.5	1	360	360
	39	12.5	2	575	1150
	40	12.5	2	310	620
	41	12.5	2	1181	2362
	42	12.5	2	234	468
	43	12.5	2	961	1922



Resumo do aço

ACO	DIAM	C.TOTAL (m)	PESO (kg)
CA50	10.0	400.7	247
	12.5	85.9	82.7
CA60	5.0	489.1	75.4
PESO TOTAL			
CA50	329.8		
CA60	75.4		

Vol. de concreto total (C-20) = 4.67 m³
Área de forma total = 89.59 m²

