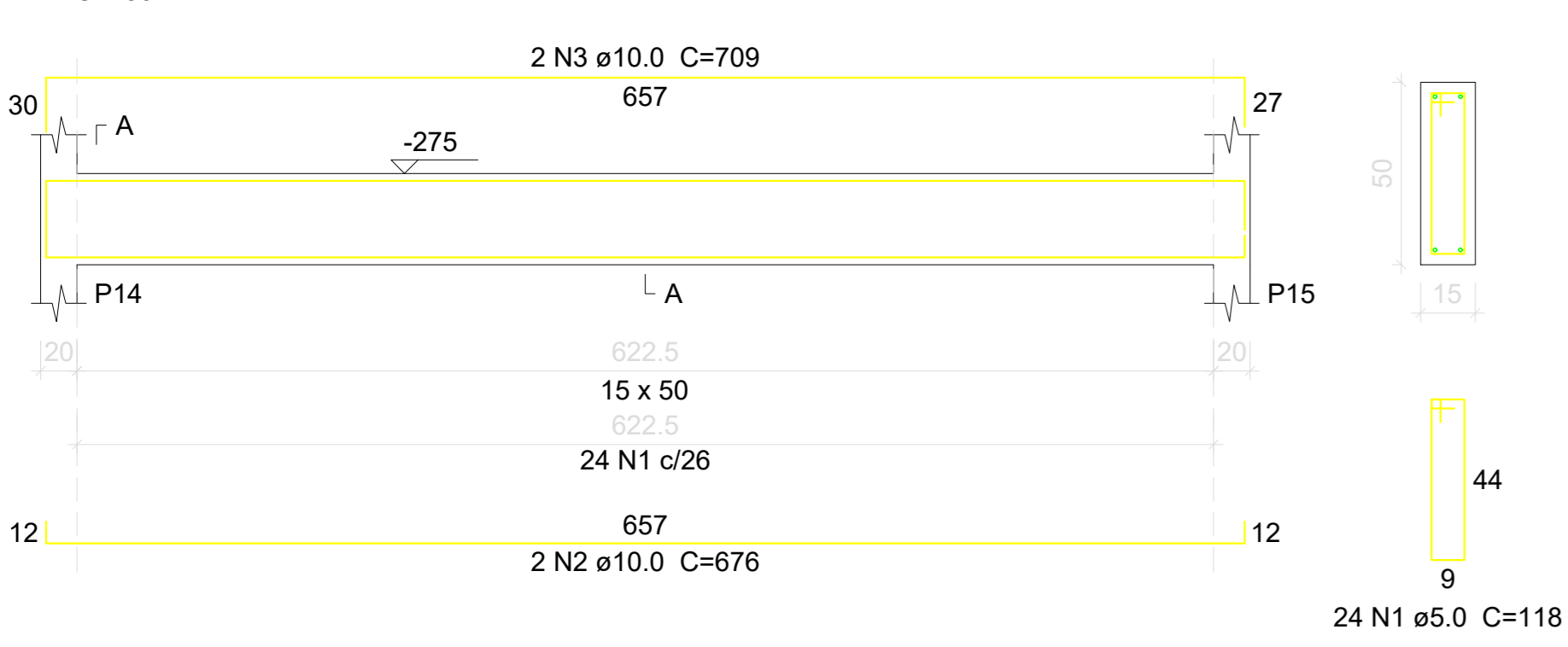
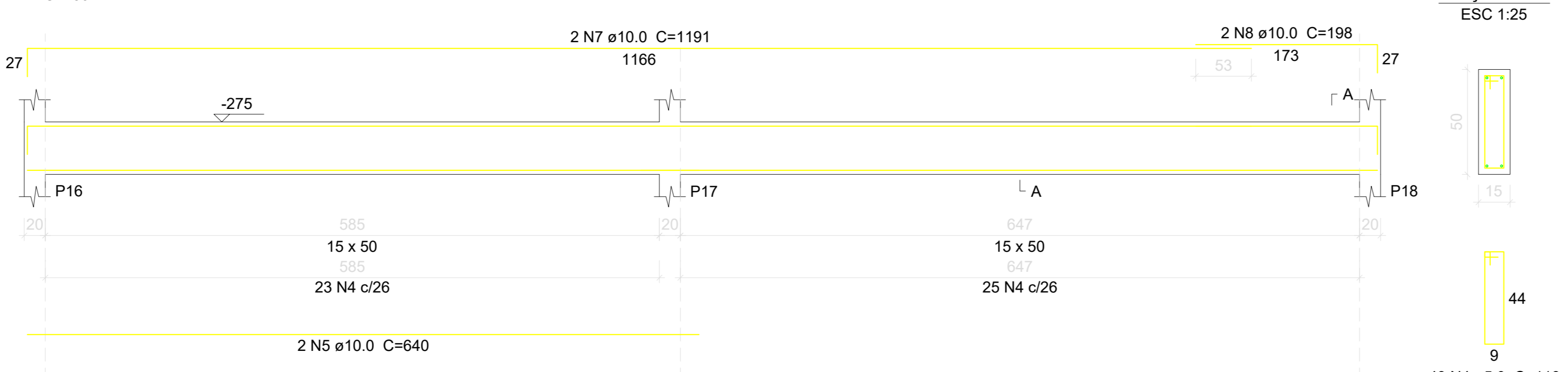


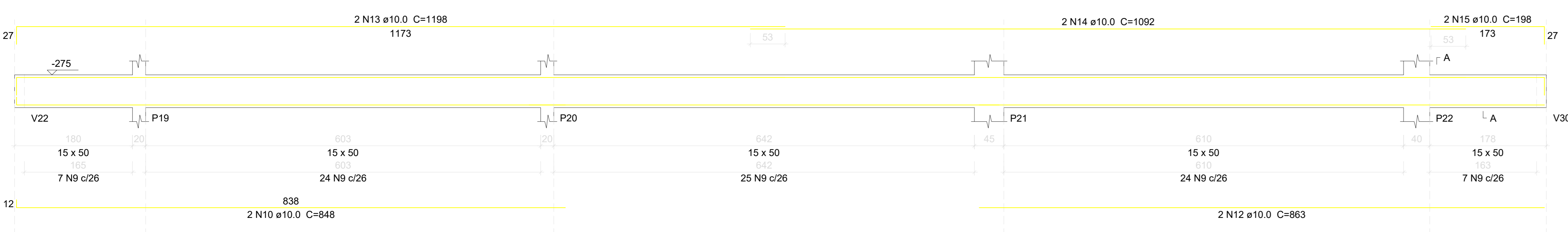
V1 (15 x 50)



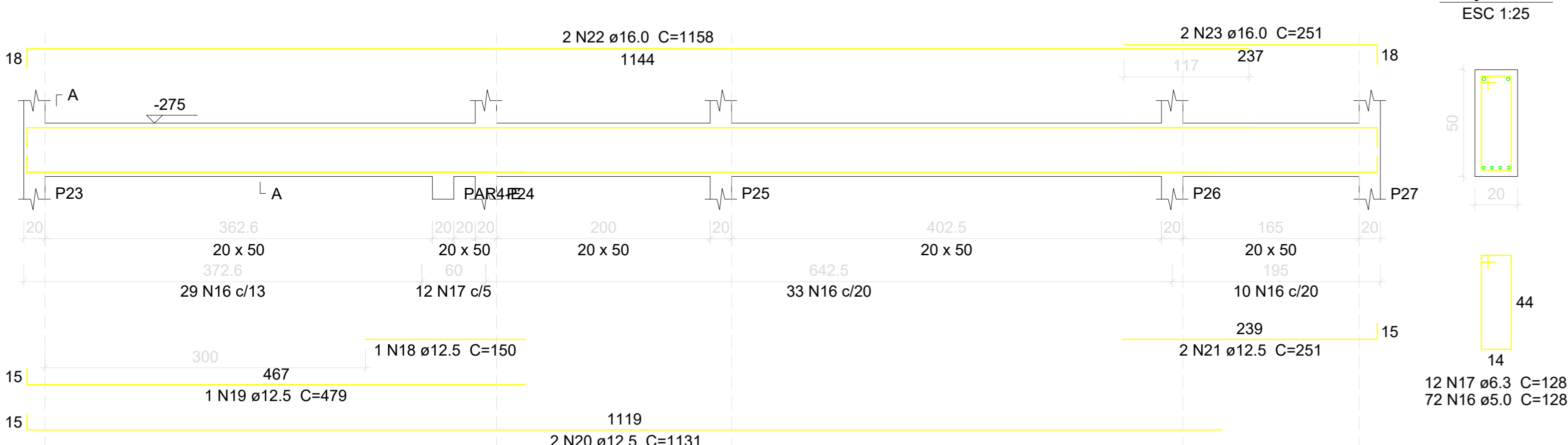
V2 (15 x 50)



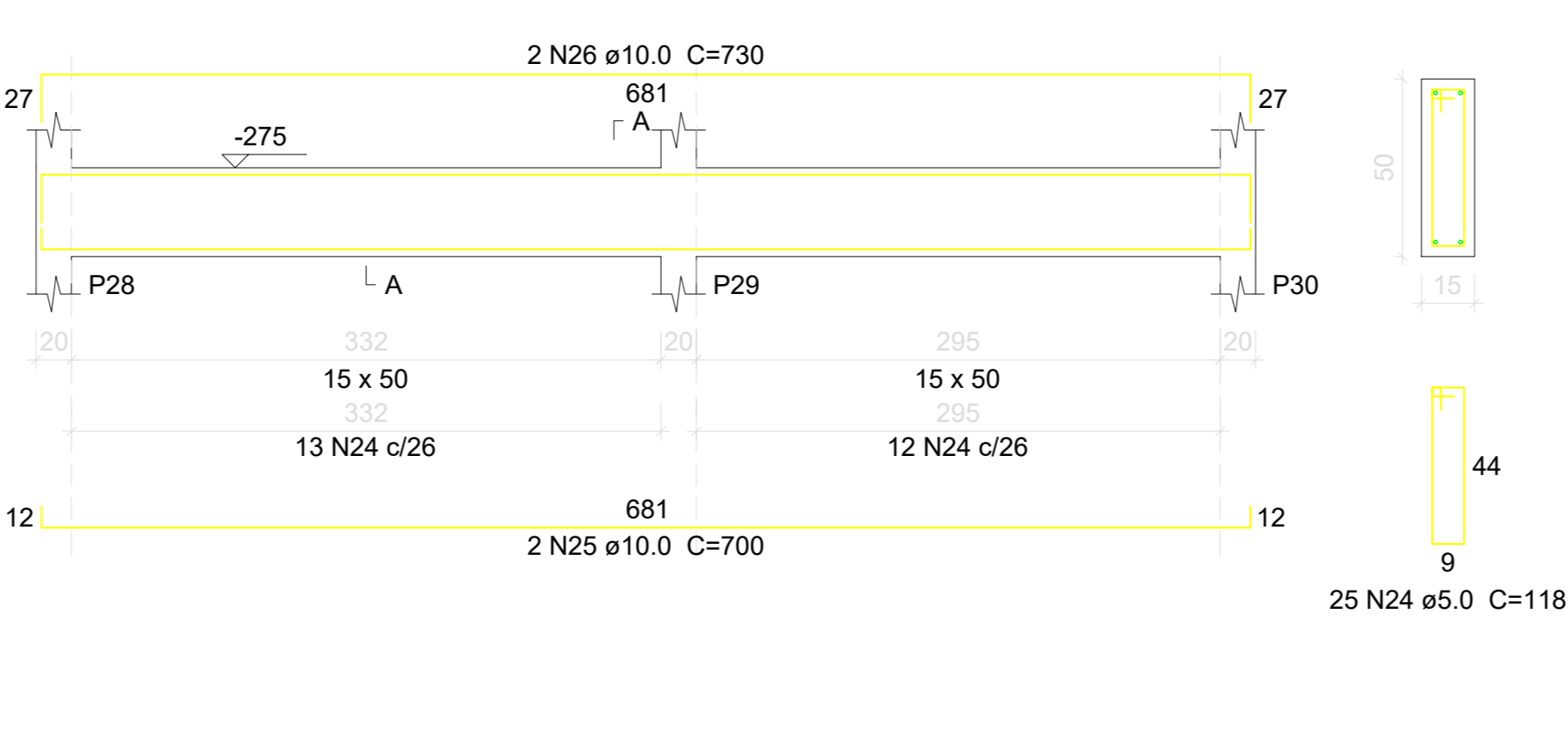
V3 (15 x 50)



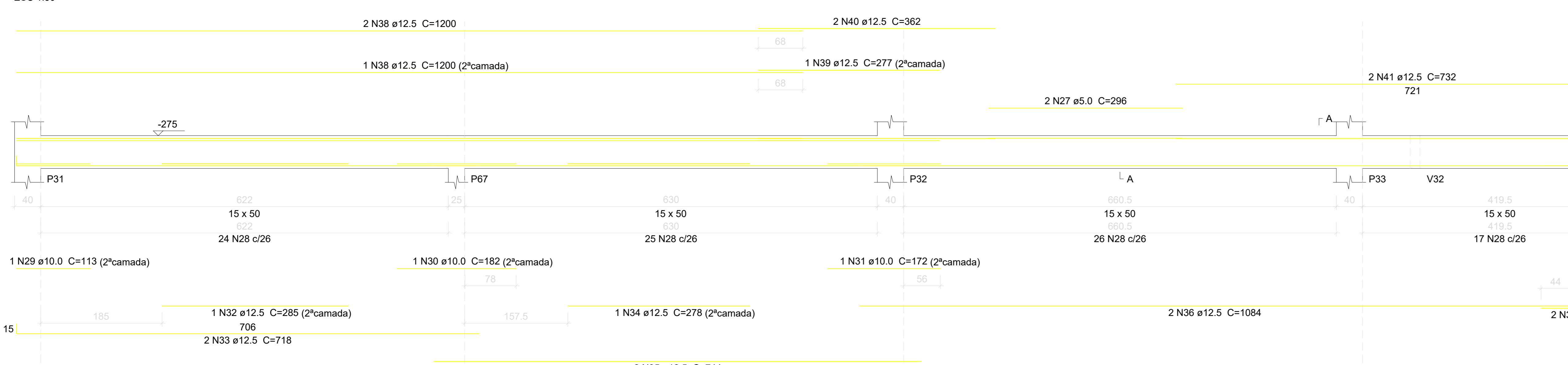
V4 (20 x 50)



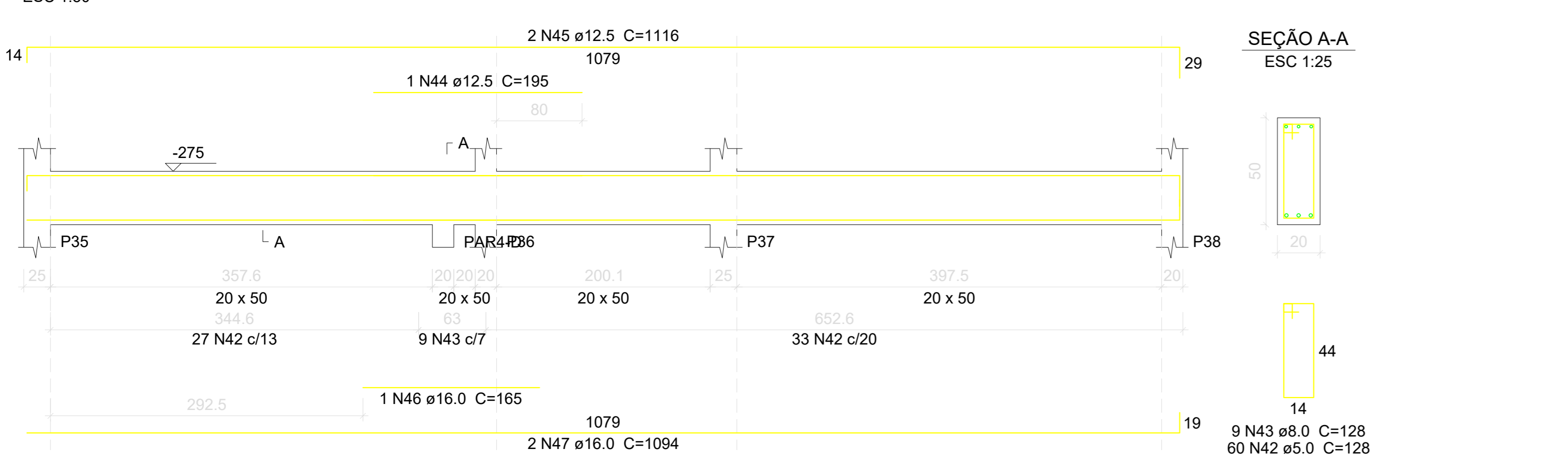
V5 (15 x 50)



V6 (15 x 50)



V7 (20 x 50)



Relação do aço

ELEMENTO	AÇO	N	DIAM (mm)	QUANT	C.UNIT (cm)	C.TOTAL (cm)
V1	CA60	1	5.0	24	118	2832
	CA50	2	10.0	2	676	1352
	CA50	3	10.0	2	709	1418
V2	CA60	4	5.0	48	118	5664
	CA50	5	10.0	2	640	1280
	CA50	6	10.0	2	702	1404
	CA50	7	10.0	2	1191	2382
	CA50	8	10.0	2	198	396
	CA60	9	5.0	87	118	10266
V3	CA50	10	10.0	2	848	1696
	CA50	11	10.0	2	717	1434
	CA50	12	10.0	2	863	1726
	CA50	13	10.0	2	1198	2396
	CA50	14	10.0	2	1092	2184
	CA50	15	10.0	2	196	396
	CA60	16	5.0	72	128	9216
V4	CA50	17	6.3	12	128	1536
	CA50	18	12.5	1	150	150
	CA50	19	12.5	1	479	479
	CA50	20	12.5	2	1131	2262
	CA50	21	12.5	2	251	502
V5	CA50	22	16.0	2	1158	2316
	CA50	23	16.0	2	251	502
	CA60	24	5.0	25	118	2950
	CA50	25	10.0	2	700	1400
	CA50	26	10.0	2	730	1460
	CA60	27	5.0	2	296	592
	CA60	28	5.0	92	118	10856
	CA50	29	10.0	1	113	113
	CA50	30	10.0	1	182	182
	CA50	31	10.0	1	172	172
V6	CA50	32	12.5	1	285	285
	CA50	33	12.5	2	718	1436
	CA50	34	12.5	1	278	278
	CA50	35	12.5	2	744	1488
	CA50	36	12.5	2	1084	2168
	CA50	37	12.5	2	164	328
	CA50	38	12.5	3	1200	3600
	CA50	39	12.5	1	277	277
	CA50	40	12.5	2	362	724
	CA50	41	12.5	2	732	1464
	CA60	42	5.0	60	128	7680
	CA50	43	8.0	9	128	1152
V7	CA50	44	12.5	1	195	195
	CA50	45	12.5	2	1116	2232
	CA50	46	16.0	1	165	165
	CA50	47	16.0	2	1094	2188

Resumo do aço

AÇO	DIAM (mm)	C.TOTAL (m)	PESO (kg)
CA50	6.3	15.4	3.8
	8.0	11.6	4.5
	10.0	214	131.9
	12.5	178.7	172.1
	16.0	51.8	81.6
	5.0	500.6	77.2
CA60			
PESO TOTAL (kg)			
CA50		393.9	
CA60		77.2	
Volume de concreto (C-25) = 7.96 m³			
Área de forma = 114.24 m²			

A & V PROJETOS DE ENGENHARIA

PROJETO: **PROJETO ESTRUTURAL HOSPITAL DR ESTEVAM**

INTERESSADO: **PREFEITURA DE SOBRAL**

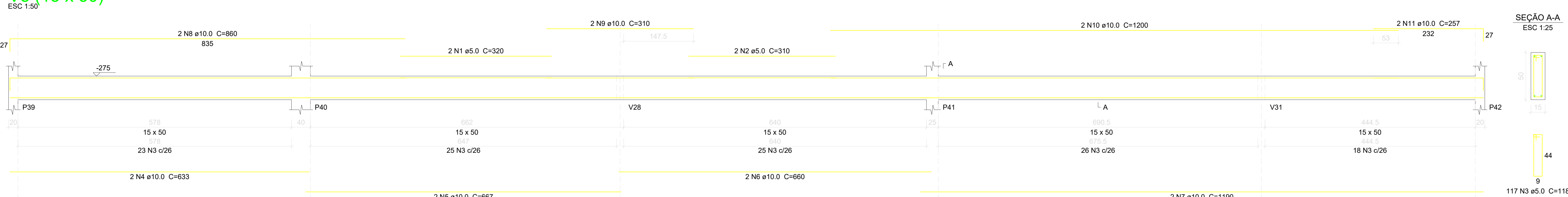
ENDEREÇO: _____

MUNICÍPIO: **SOBRAL-CE**

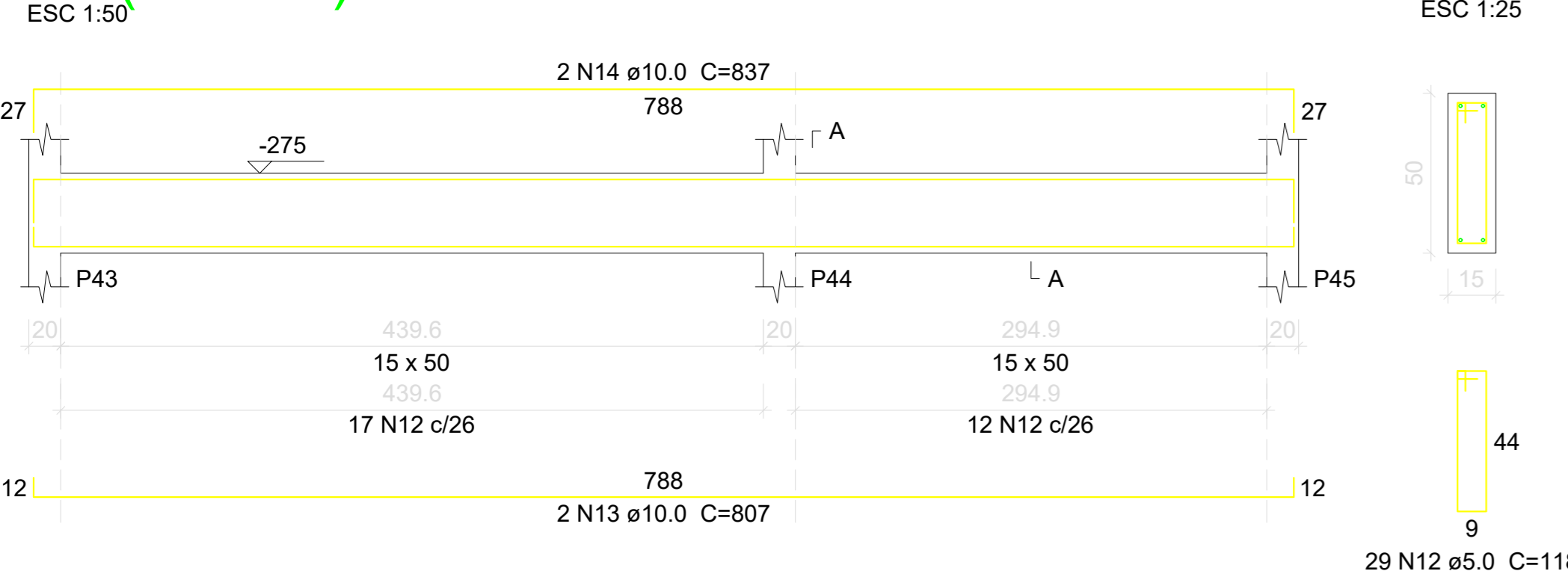
DESENHOS DA PRANCHA	ESCALA
DET. VIGAS SUBSOLO FL 01	INDICADA
_____	_____
_____	_____
_____	_____

ESCALA DE FOLHEIOS: 1:1, 1:0.50, 1:0.30, 1:0.20, 1:0.15, 1:0.10, 1:0.09, 1:0.05, 1:0.30

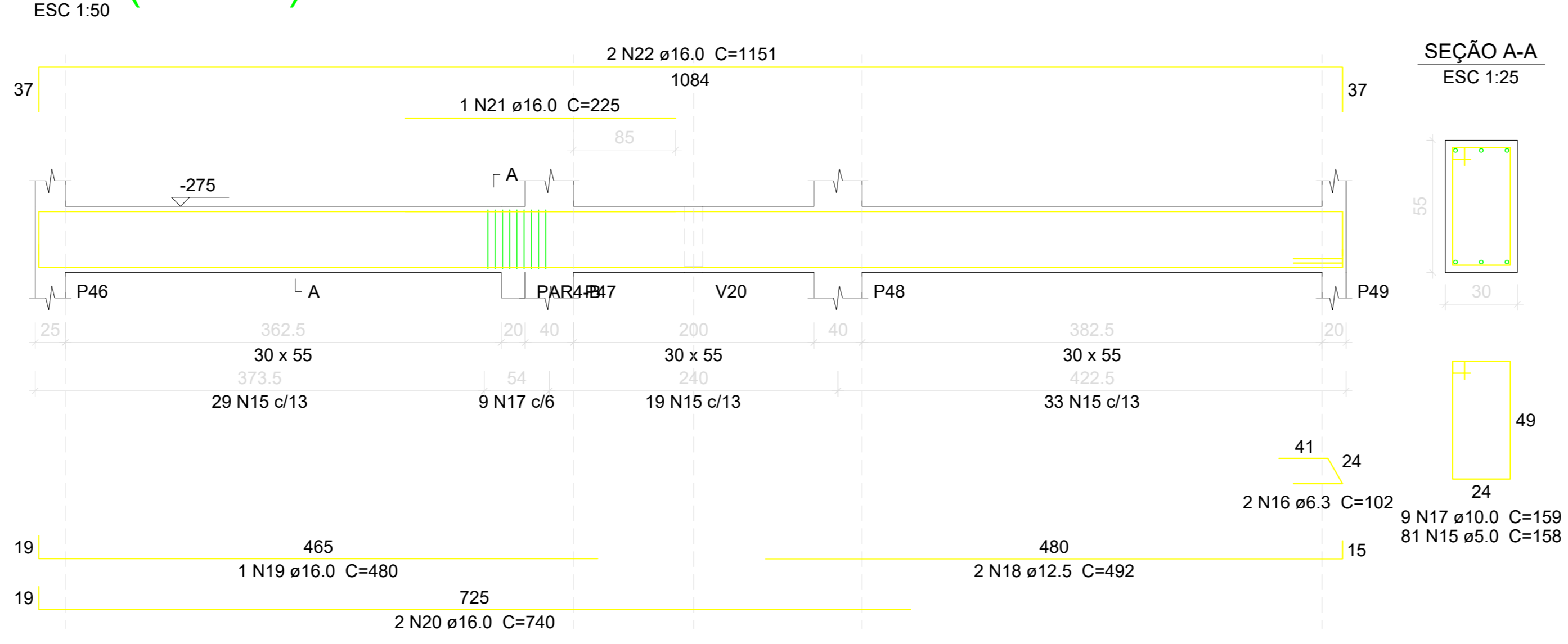
V8 (15 x 50)



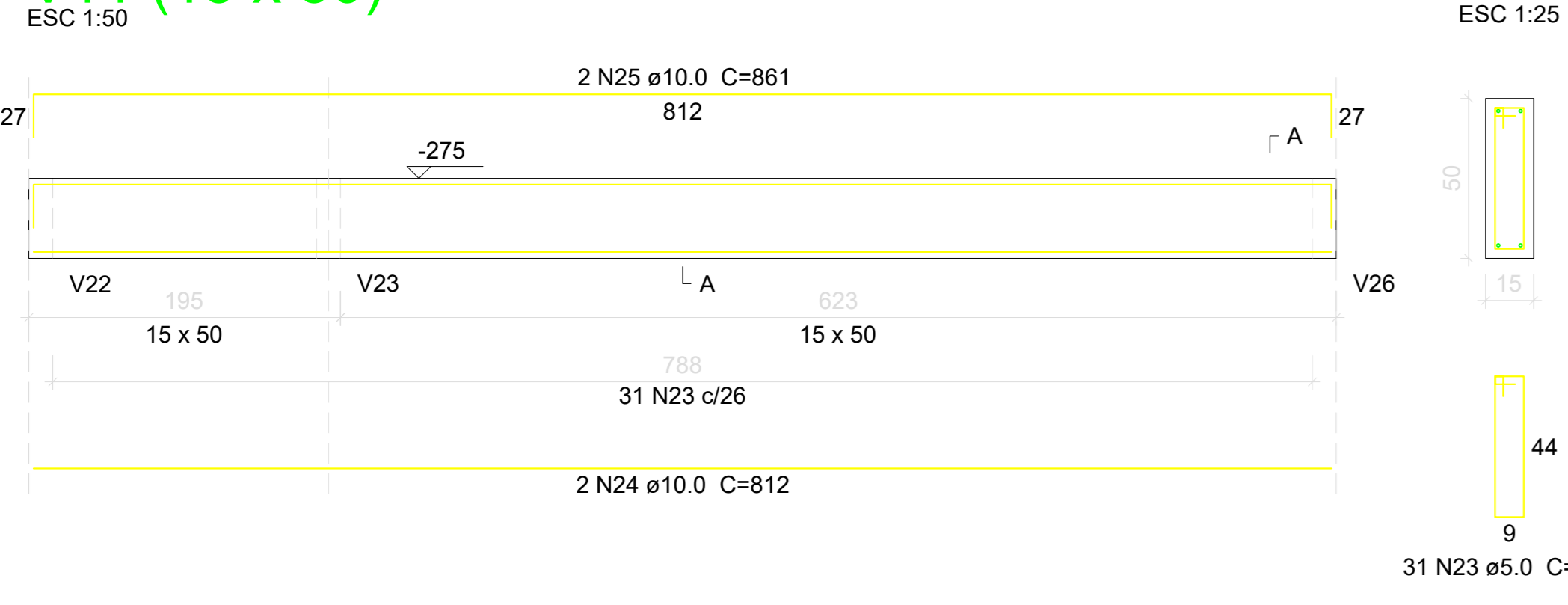
V9 (15 x 50)



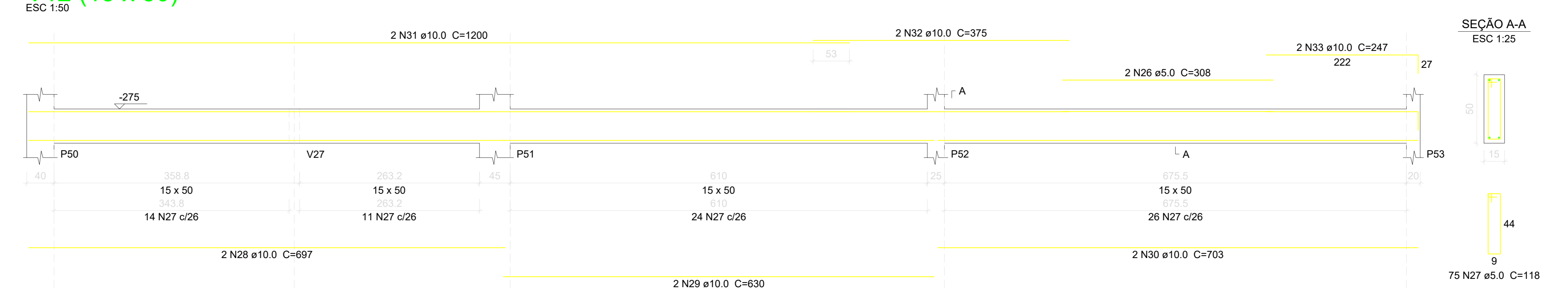
V10 (30 x 55)



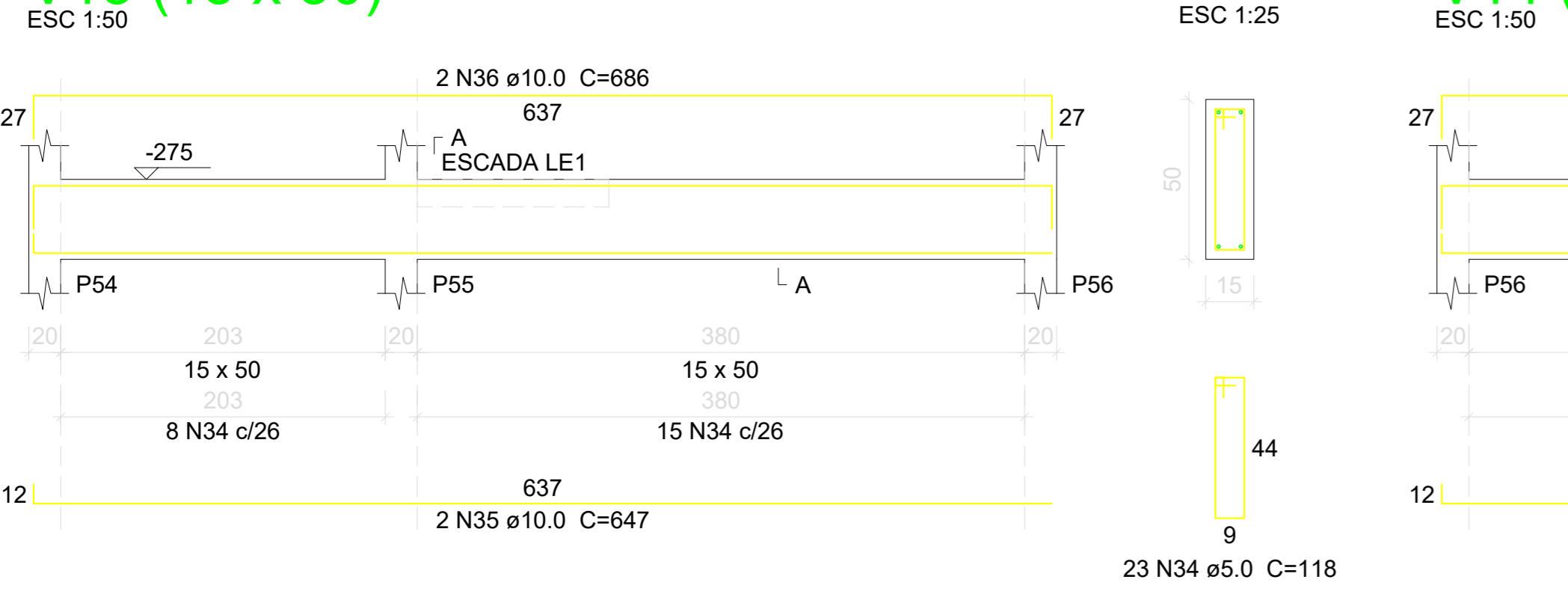
V11 (15 x 50)



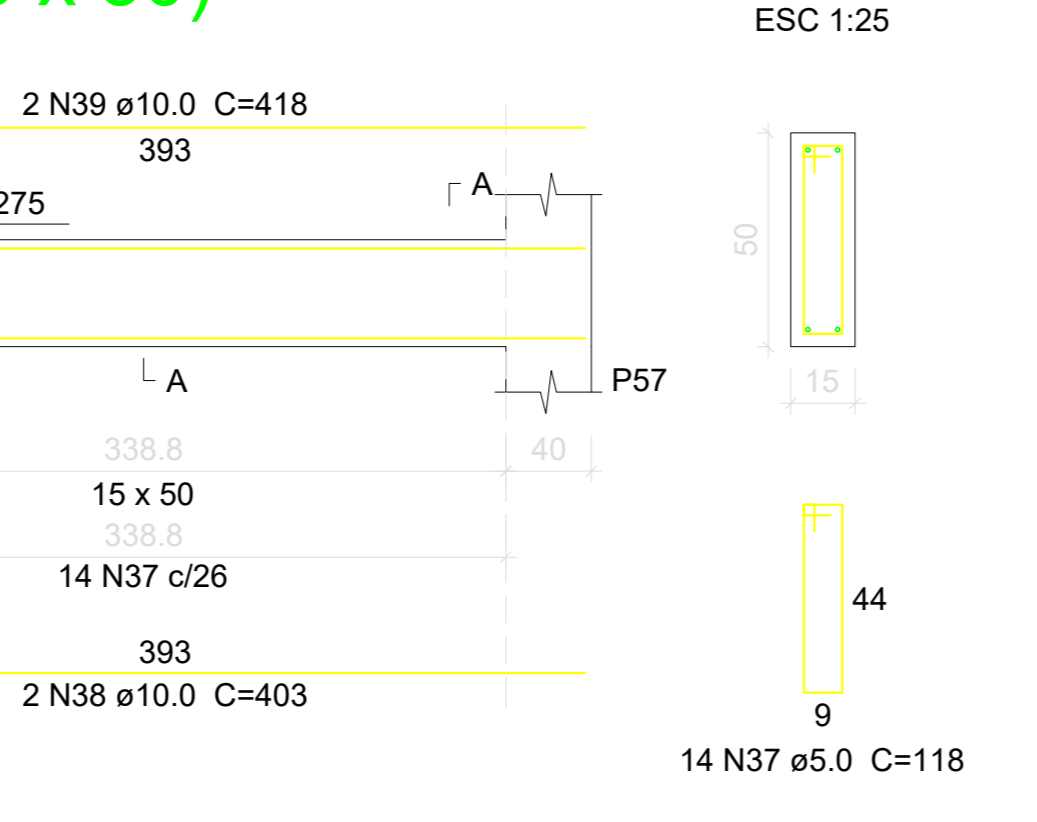
V12 (15 x 50)



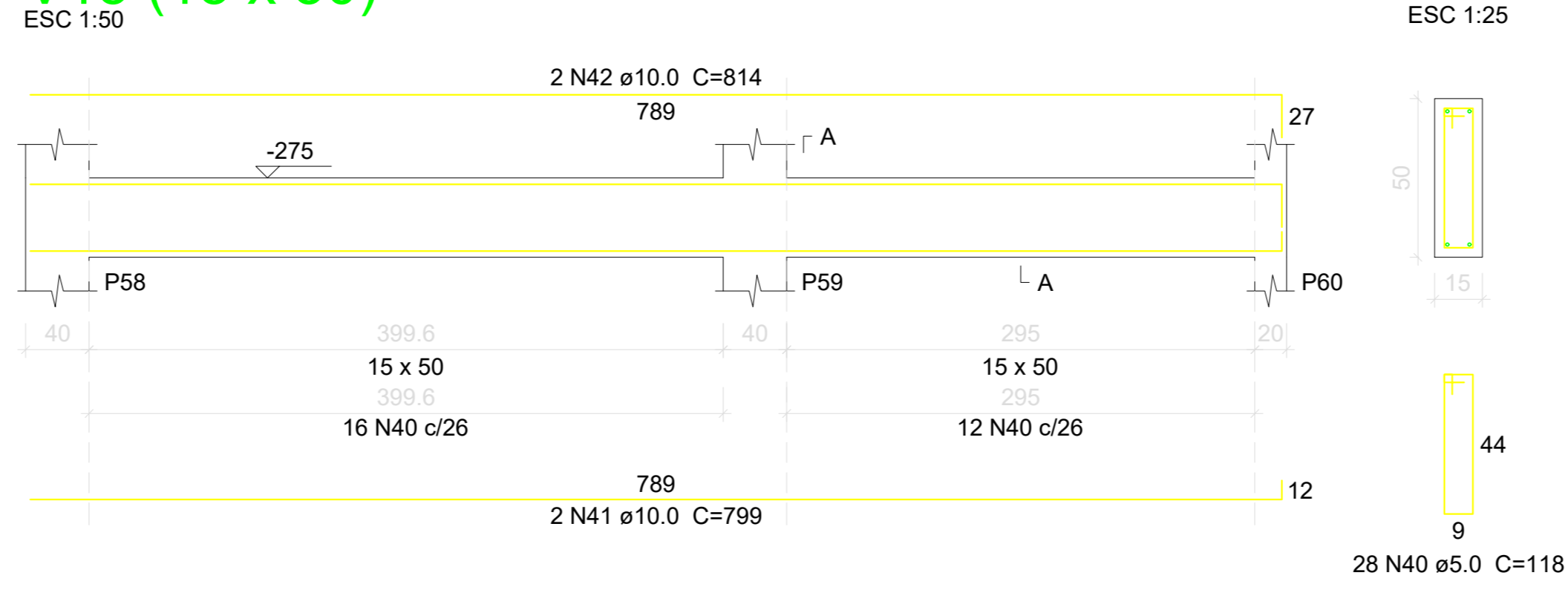
V13 (15 x 50)



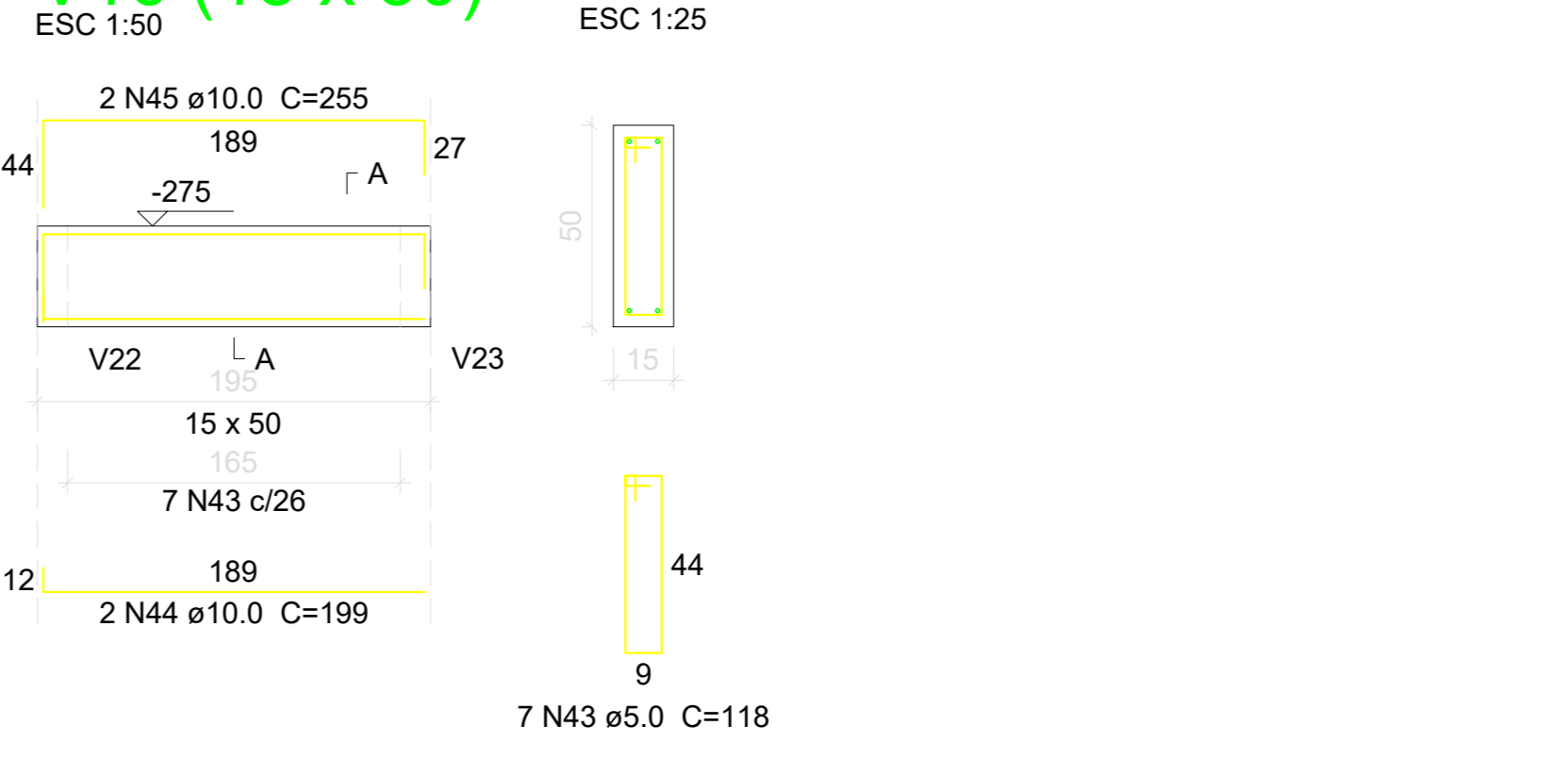
V14 (15 x 50)



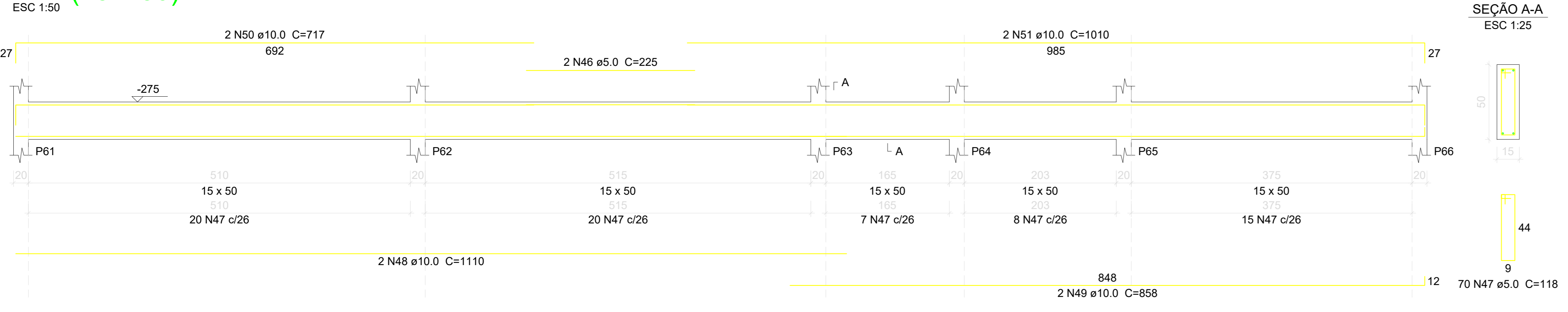
V15 (15 x 50)



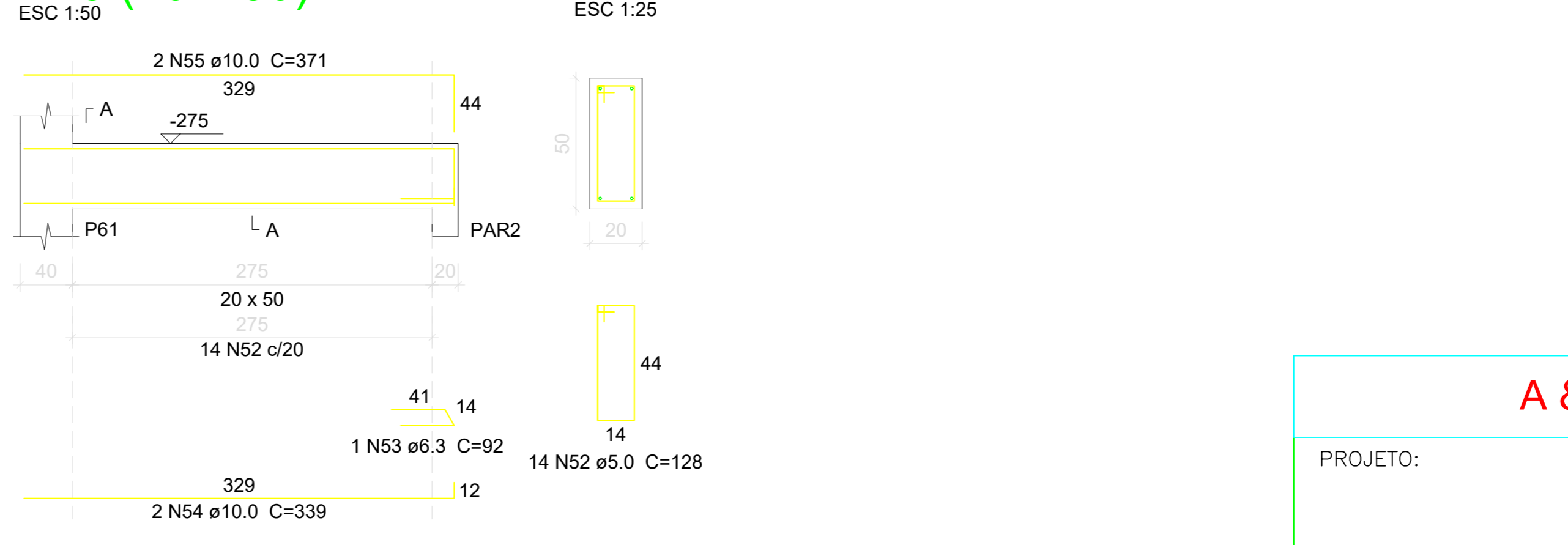
V16 (15 x 50)



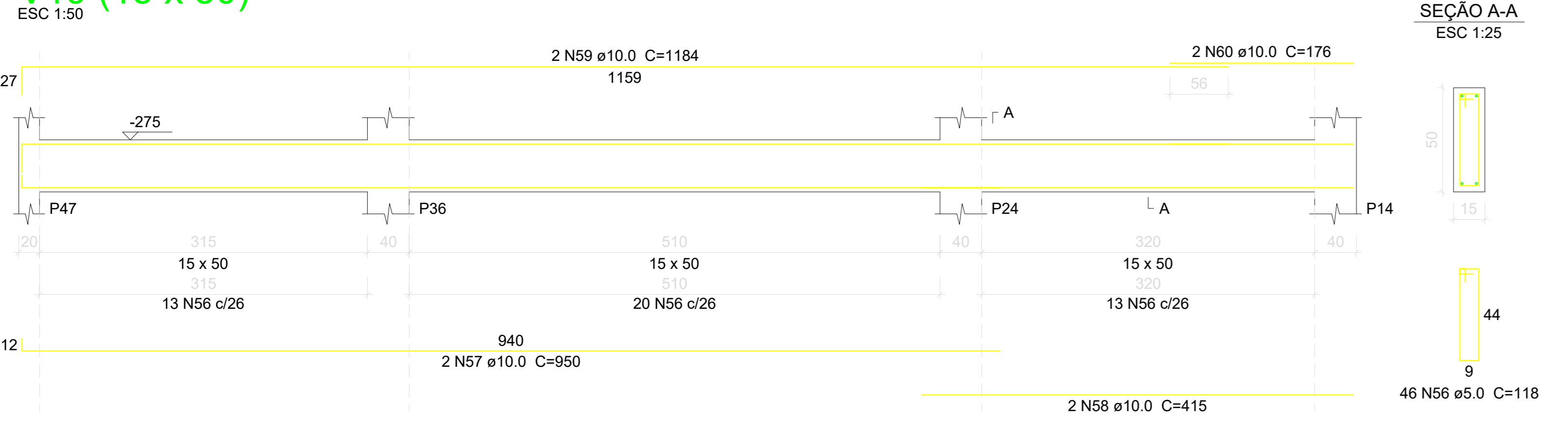
V17 (15 x 50)



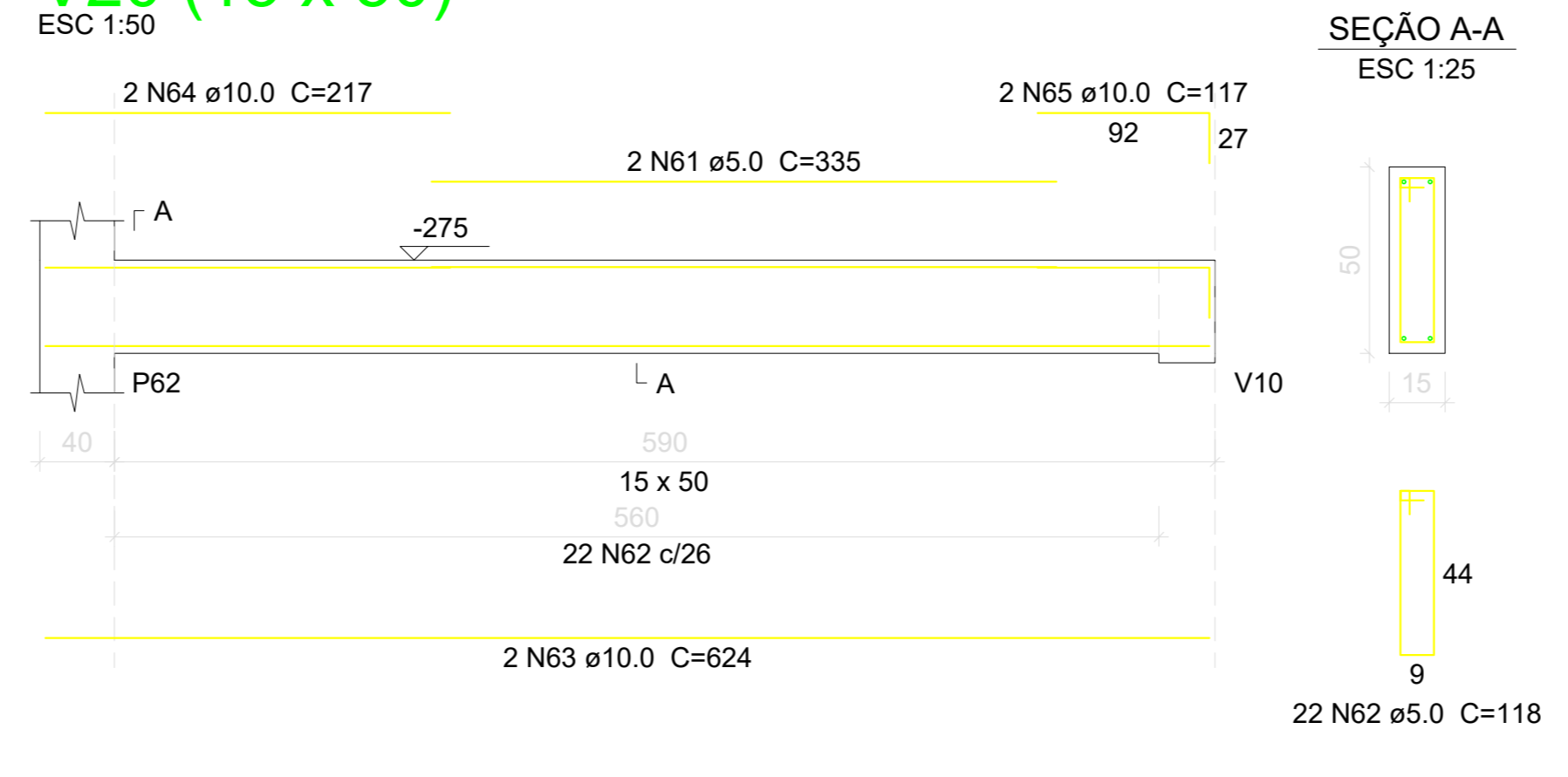
V18 (20 x 50)



V19 (15 x 50)



V20 (15 x 50)



Relação do aço

ELEMENTO	AÇO	N	DIAM (mm)	QUANT	C.UNIT (cm)	C.TOTAL (cm)
V8	CA60	1	5.0	2	320	640
	CA60	2	5.0	2	310	620
	CA60	3	5.0	117	118	13806
	CA50	4	10.0	2	633	1266
	CA50	5	10.0	2	667	1334
	CA50	6	10.0	2	660	1320
	CA50	7	10.0	2	1190	2380
	CA50	8	10.0	2	860	1720
	CA50	9	10.0	2	310	620
	CA50	10	10.0	2	1200	2400
V9	CA50	11	10.0	2	257	514
	CA60	12	5.0	29	118	3422
	CA50	13	10.0	2	807	1614
	CA50	14	10.0	2	837	1674
	CA60	15	5.0	81	158	12798
	CA50	16	8.3	2	102	204
	CA50	17	10.0	9	159	1431
	CA50	18	12.5	2	492	984
	CA50	19	16.0	1	480	480
	CA50	20	16.0	2	740	1480
V10	CA50	21	16.0	1	225	225
	CA50	22	16.0	2	1151	2302
	CA60	23	5.0	31	118	3658
	CA50	24	10.0	2	812	1624
	CA50	25	10.0	2	861	1722
	CA60	26	5.0	2	308	616
	CA60	27	5.0	75	118	8850
	CA50	28	10.0	2	697	1394
	CA50	29	10.0	2	630	1260
	CA50	30	10.0	2	703	1406
V11	CA50	31	10.0	2	1200	2400
	CA50	32	10.0	2	375	750
	CA50	33	10.0	2	247	494
	CA60	34	5.0	23	118	2714
	CA50	35	10.0	2	647	1294
	CA50	36	10.0	2	686	1372
	CA60	37	5.0	14	118	1652
	CA50	38	10.0	2	403	806
	CA50	39	10.0	2	418	836
	CA60	40	5.0	28	118	3304
V12	CA50	41	10.0	2	799	1598
	CA50	42	10.0	2	814	1628
	CA60	43	5.0	7	118	826
	CA50	44	10.0	2	199	398
	CA50	45	10.0	2	255	510
	CA60	46	5.0	2	225	450
	CA60	47	5.0	70	118	8260
	CA50	48	10.0	2	1110	2220
	CA50	49	10.0	2	858	1716
	CA50	50	10.0	2	717	1434
V13	CA50	51	10.0	2	1010	2020
	CA60	52	5.0	14	128	1792
	CA50	53	6.3	1	92	92
	CA50	54	10.0	2	339	678
	CA50	55	10.0	2	371	742
	CA60	56	5.0	46	118	5428
	CA50	57	10.0	2	950	1900
	CA50	58	10.0	2	415	830
	CA50	59	10.0	2	1184	2368
	CA50	60	10.0	2	176	352
V14	CA60	61	5.0	2	335	670
	CA60	62	5.0	22	118	2596
	CA50	63	10.0	2	624	1248
	CA50	64	10.0	2	217	434
	CA50	65	10.0	2	117	234

Resumo do aço

AÇO	DIAM (mm)	C.TOTAL (m)	PESO (kg)
CA50	6.3	3	0.7
CA50	10.0	519.5	320.2
CA50	12.5	9.9	9.5
CA50	16.0	44.9	70.8
CA60	5.0	721.1	111.1
PESO TOTAL (kg)			
CA50		401.3	
CA60		111.1	

Volume de concreto (C-25) = 11.59 m³
Área de forma = 164.23 m²

A & V PROJETOS DE ENGENHARIA

PROJETO: **PROJETO ESTRUTURAL HOSPITAL DR ESTEVAM**

INTERESSADO: **PREFEITURA DE SOBRAL**

ENDEREÇO: _____

MUNICÍPIO: **SOBRAL-CE**

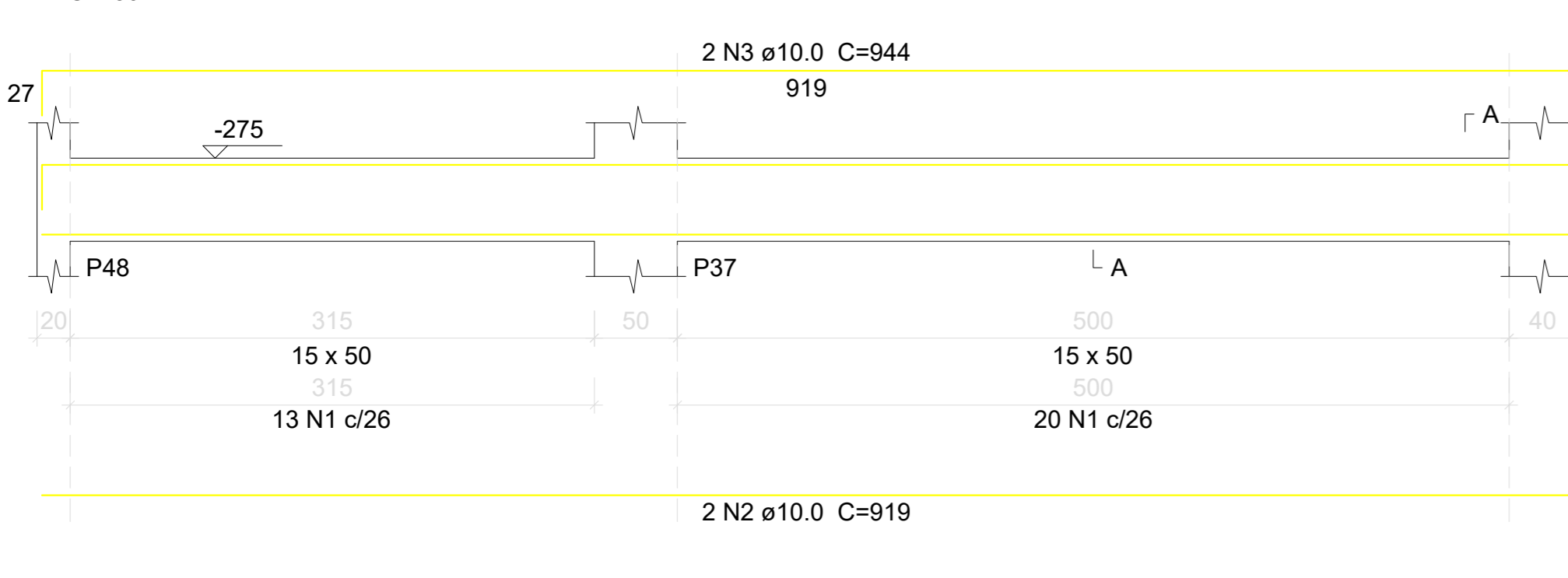
DESENHOS DA PRANCHA	ESCALA
DET. VIGAS SUBSOLO FL.02	INDICADA

ESCALA DE FUNDIÇÃO: 10:1

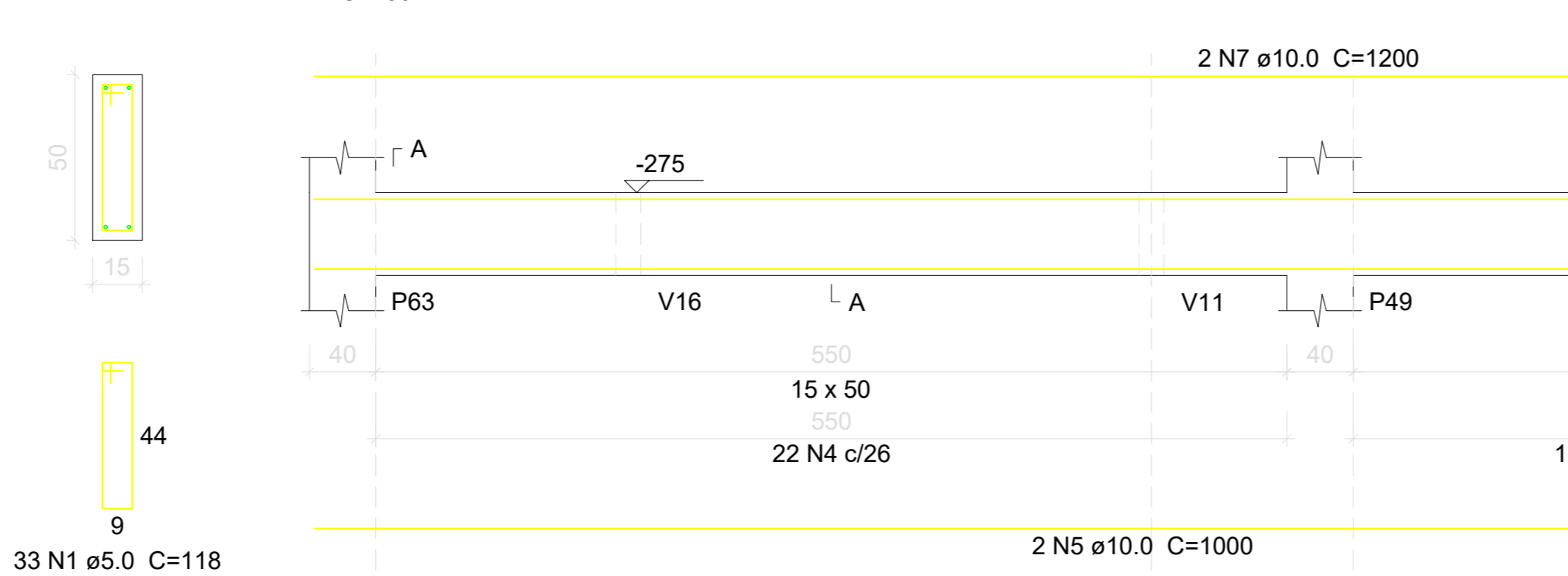
COR PENA: 1: 1.00, 2: 0.50, 3: 0.30, 4: 0.20, 5: 0.10, 6: 0.05, 7: 0.03, 8: 0.10, 9: 0.09, 10: 0.30

COLORIDA: 10: 0.30

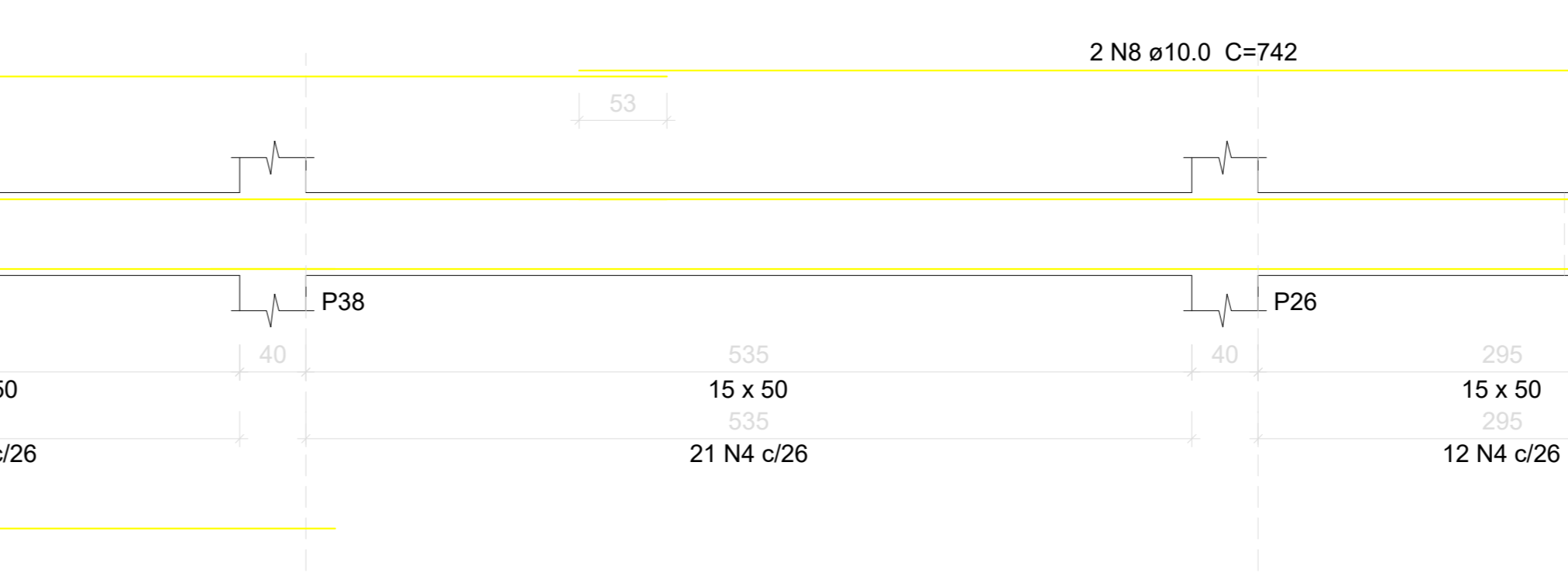
V21 (15 x 50)



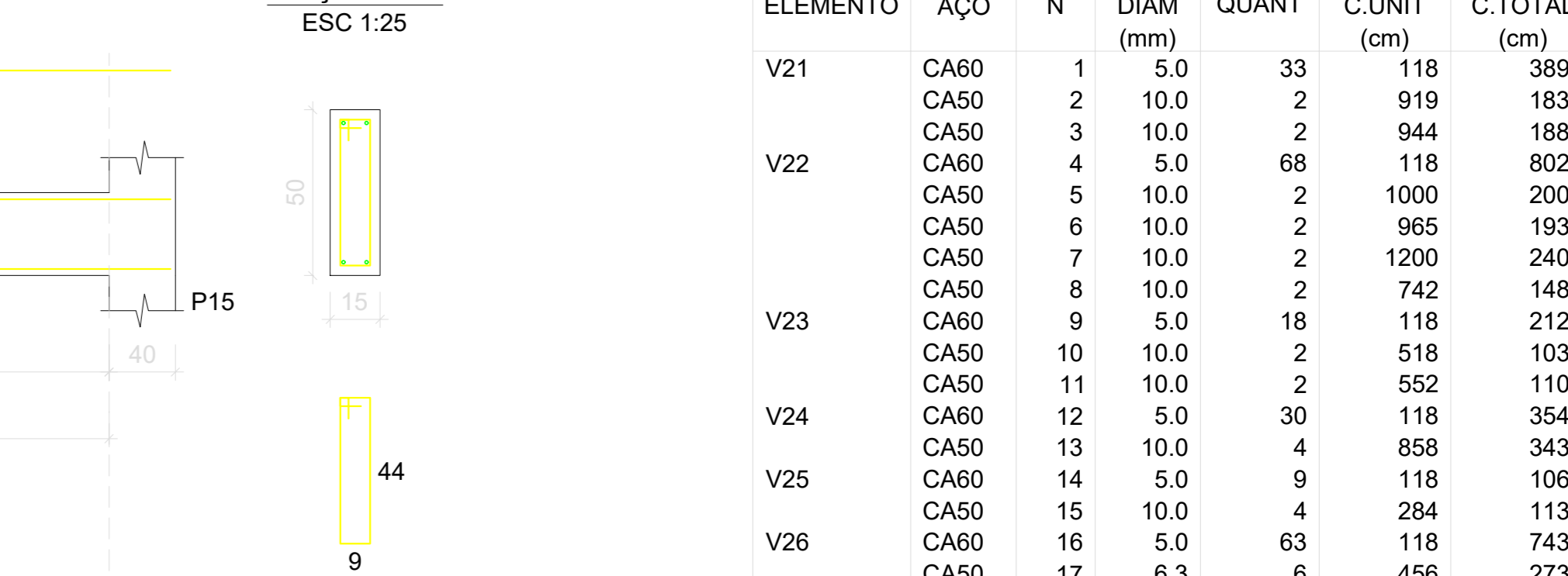
V22 (15 x 50)



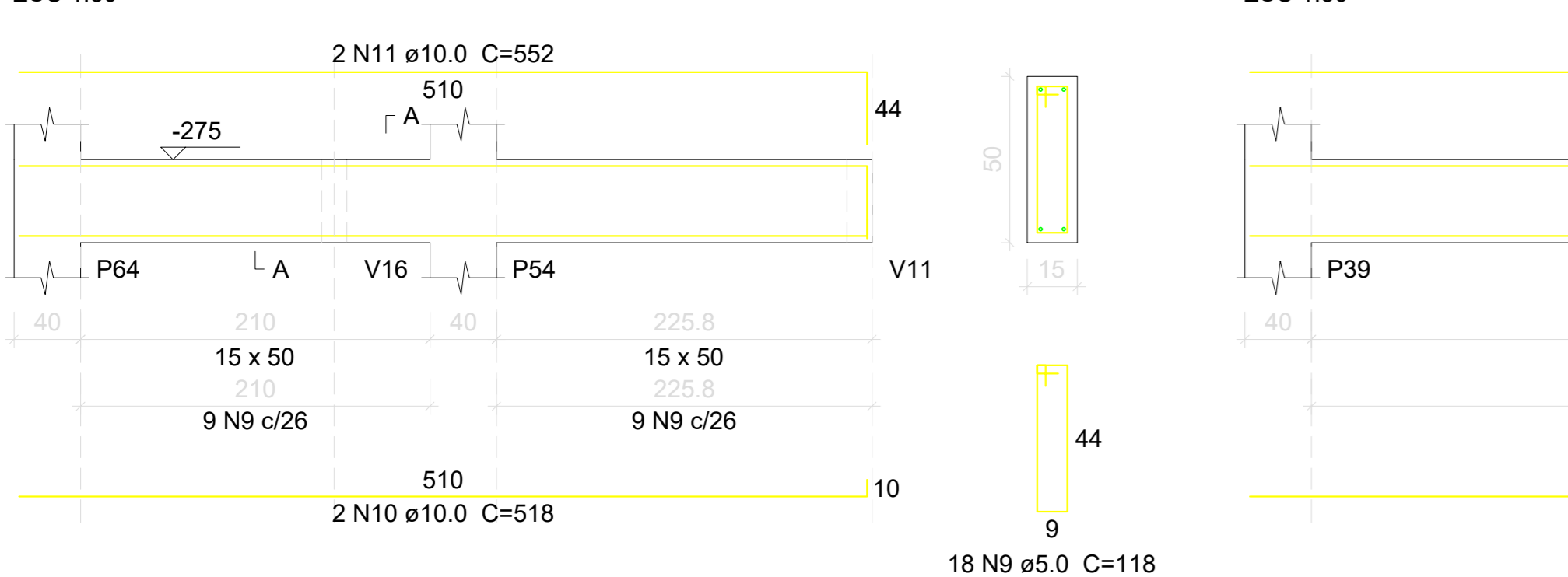
V23 (15 x 50)



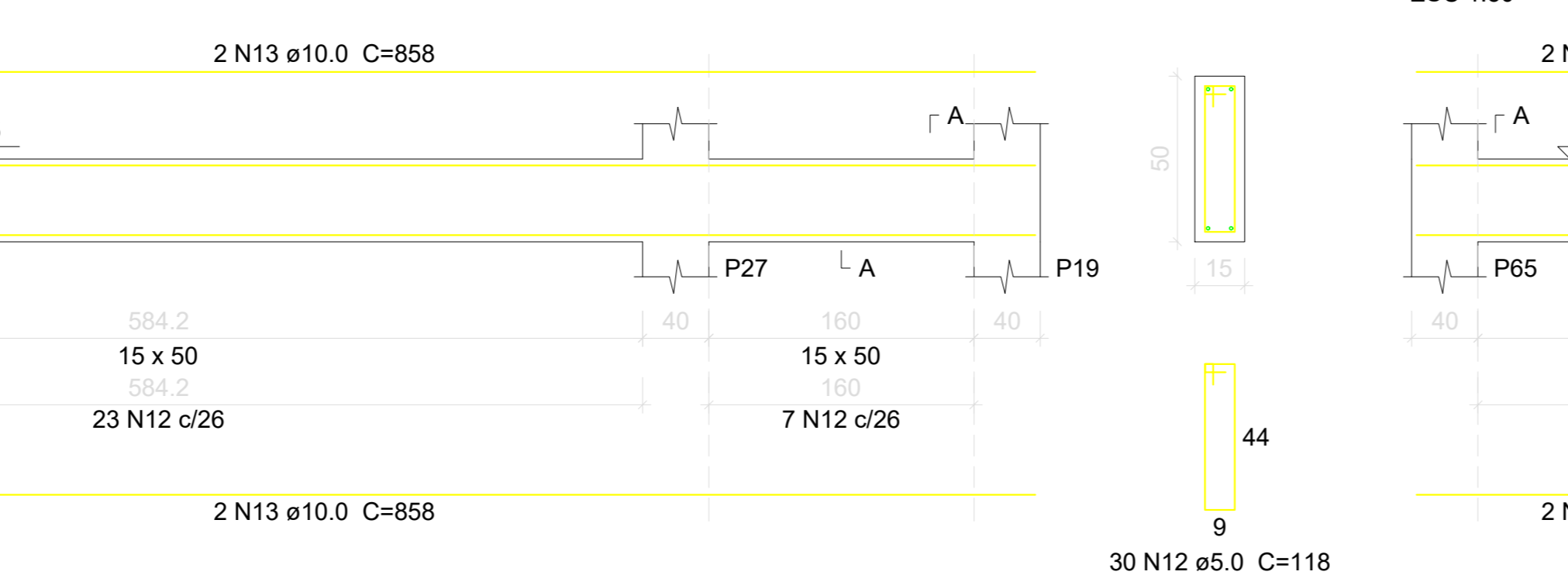
V24 (15 x 50)



V25 (15 x 50)



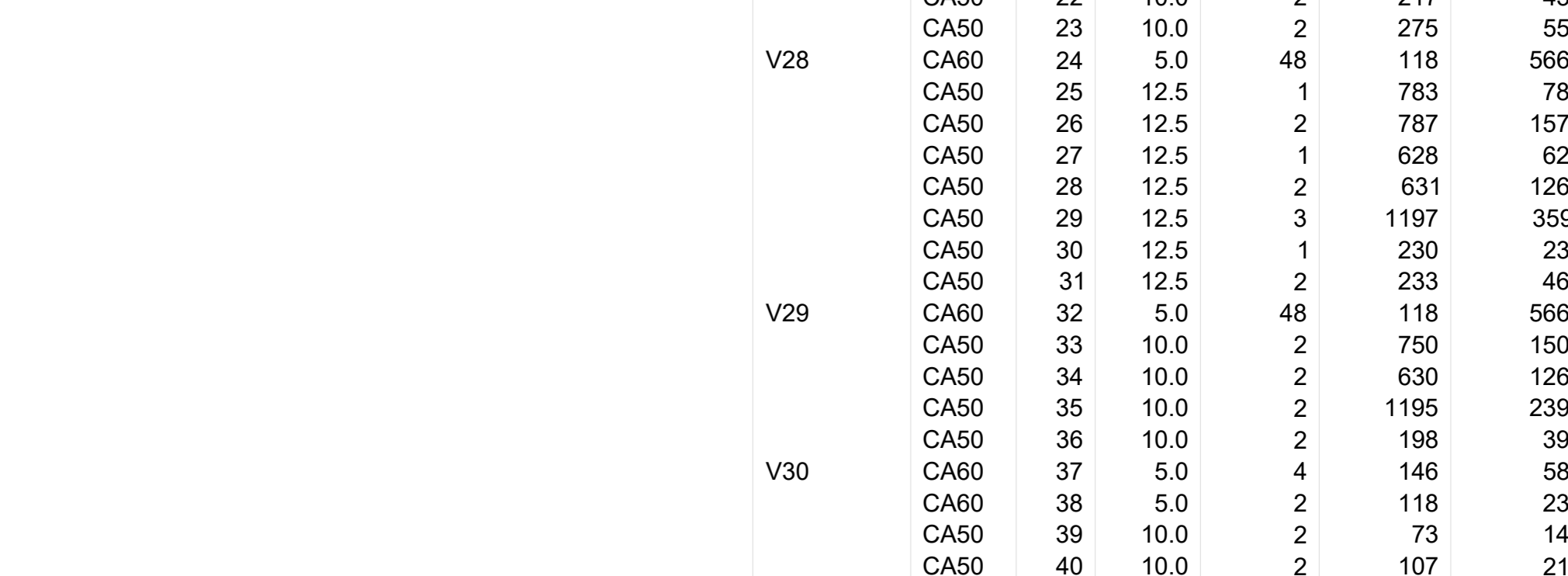
V26 (15 x 50)



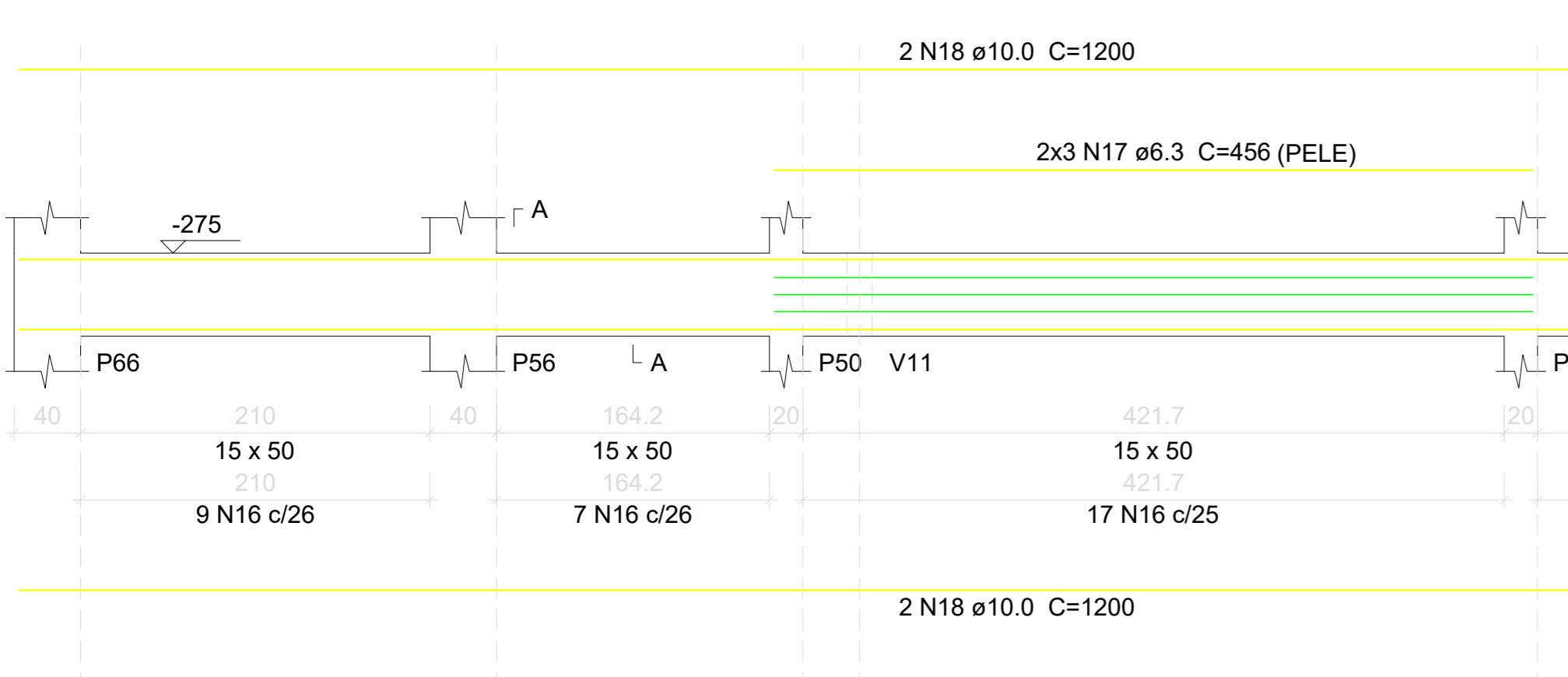
V27 (15 x 50)



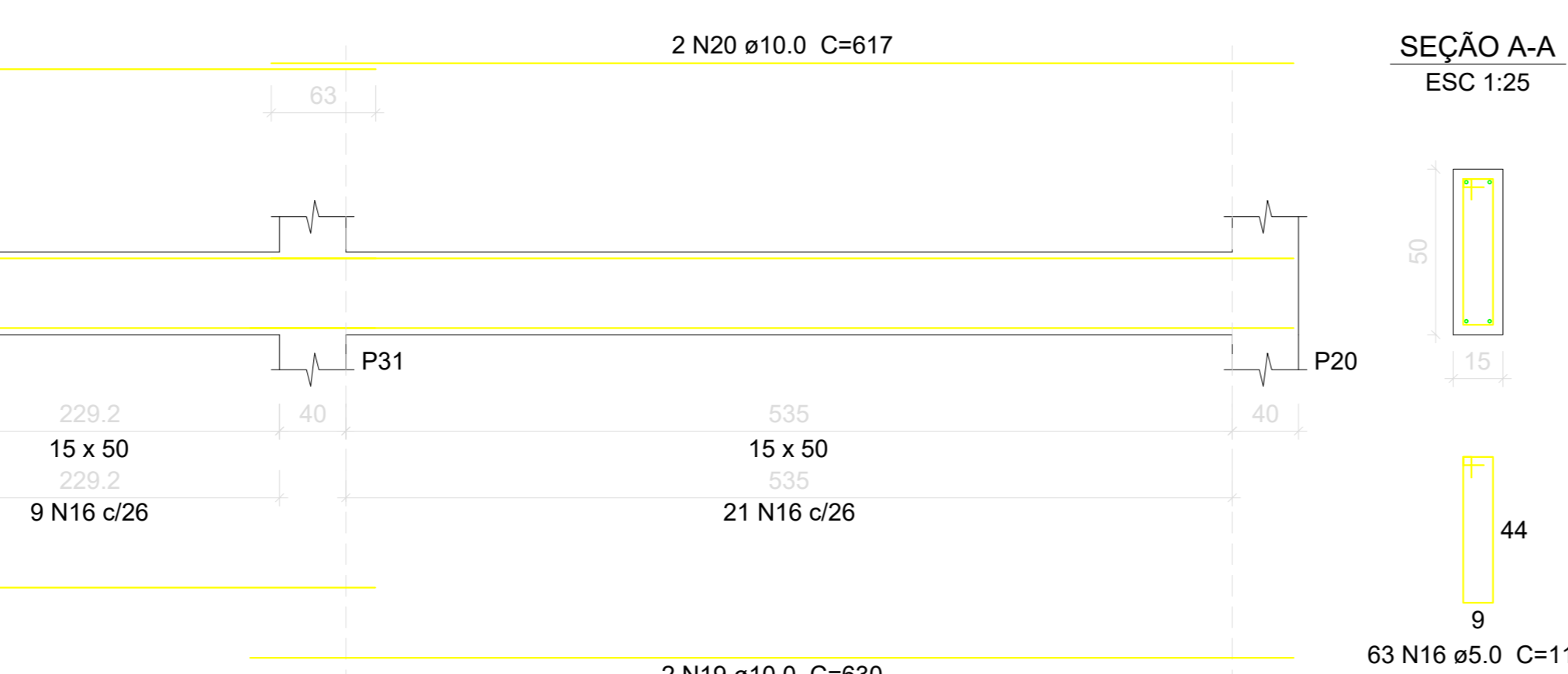
V28 (15 x 50)



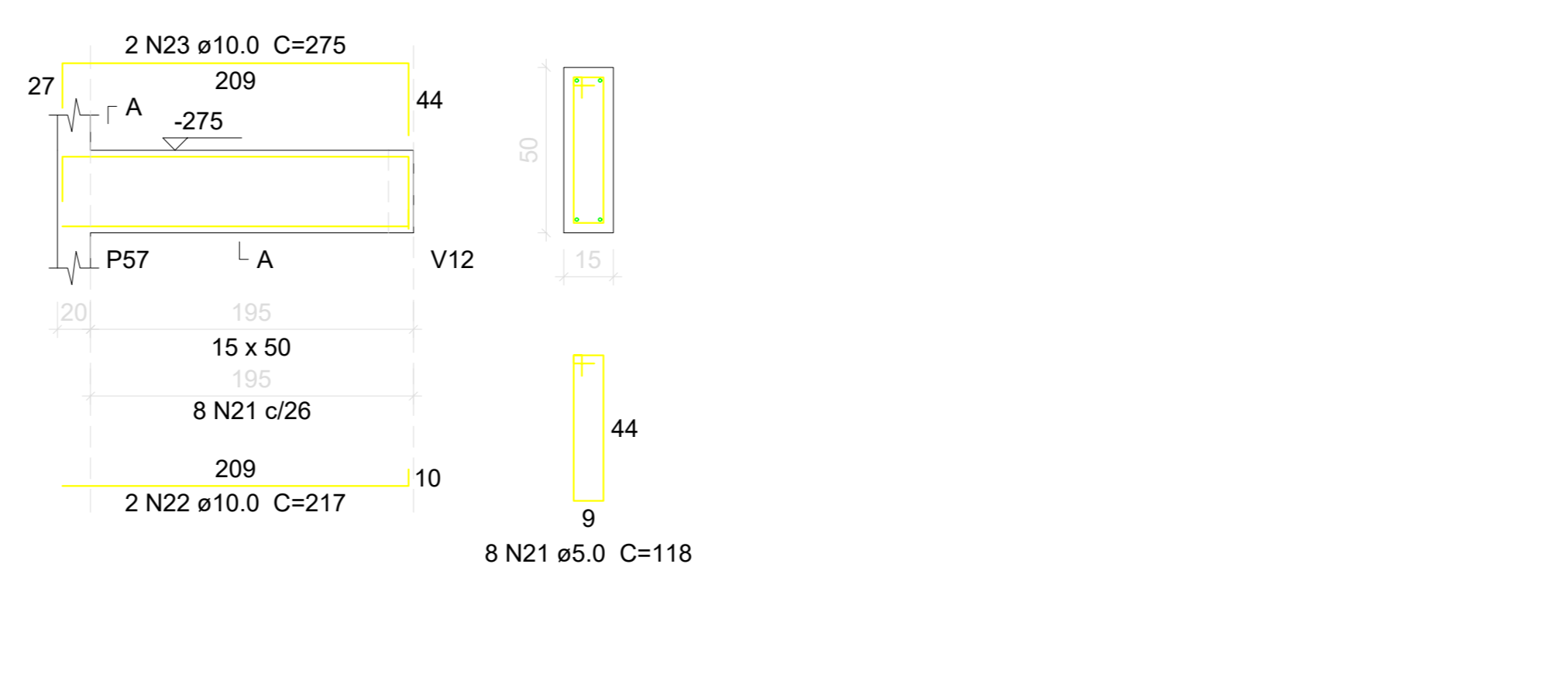
V29 (15 x 50)



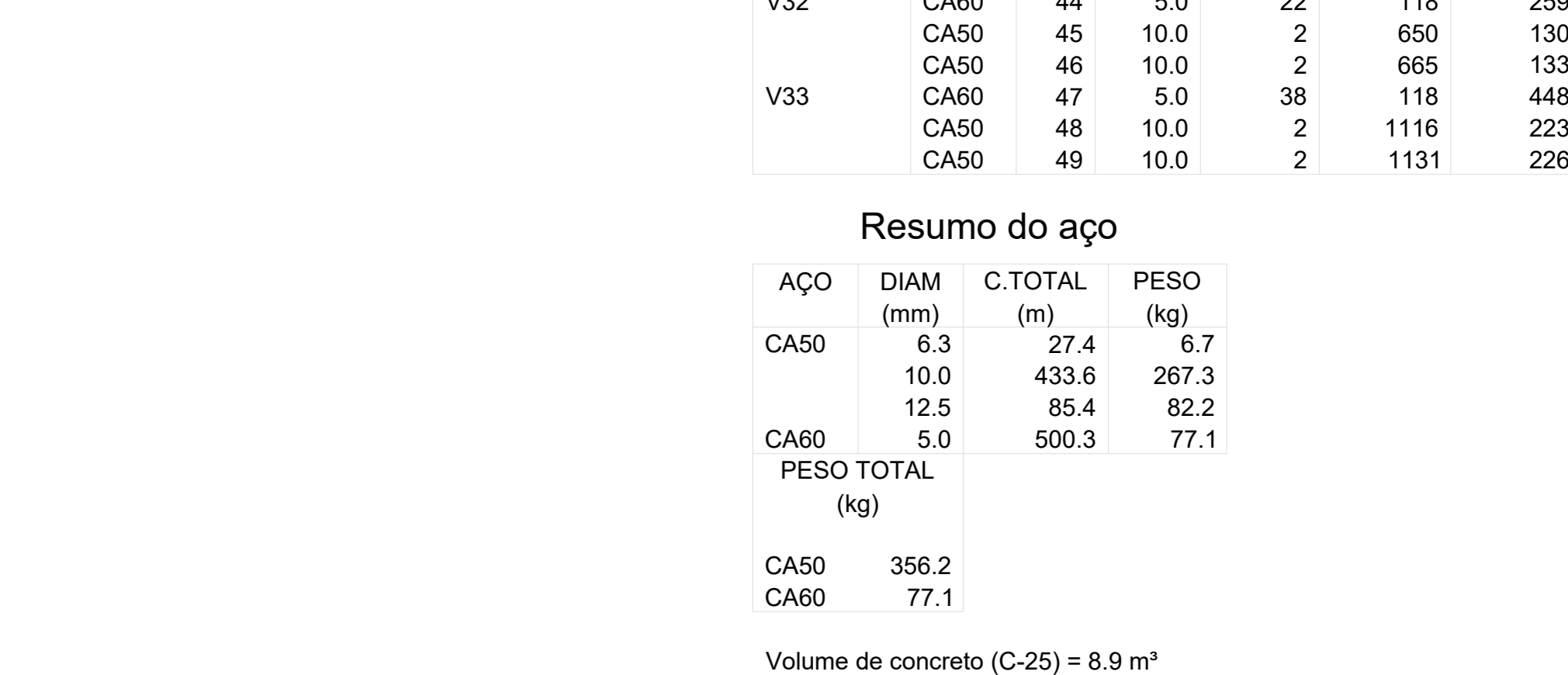
V30 (15 x 50)



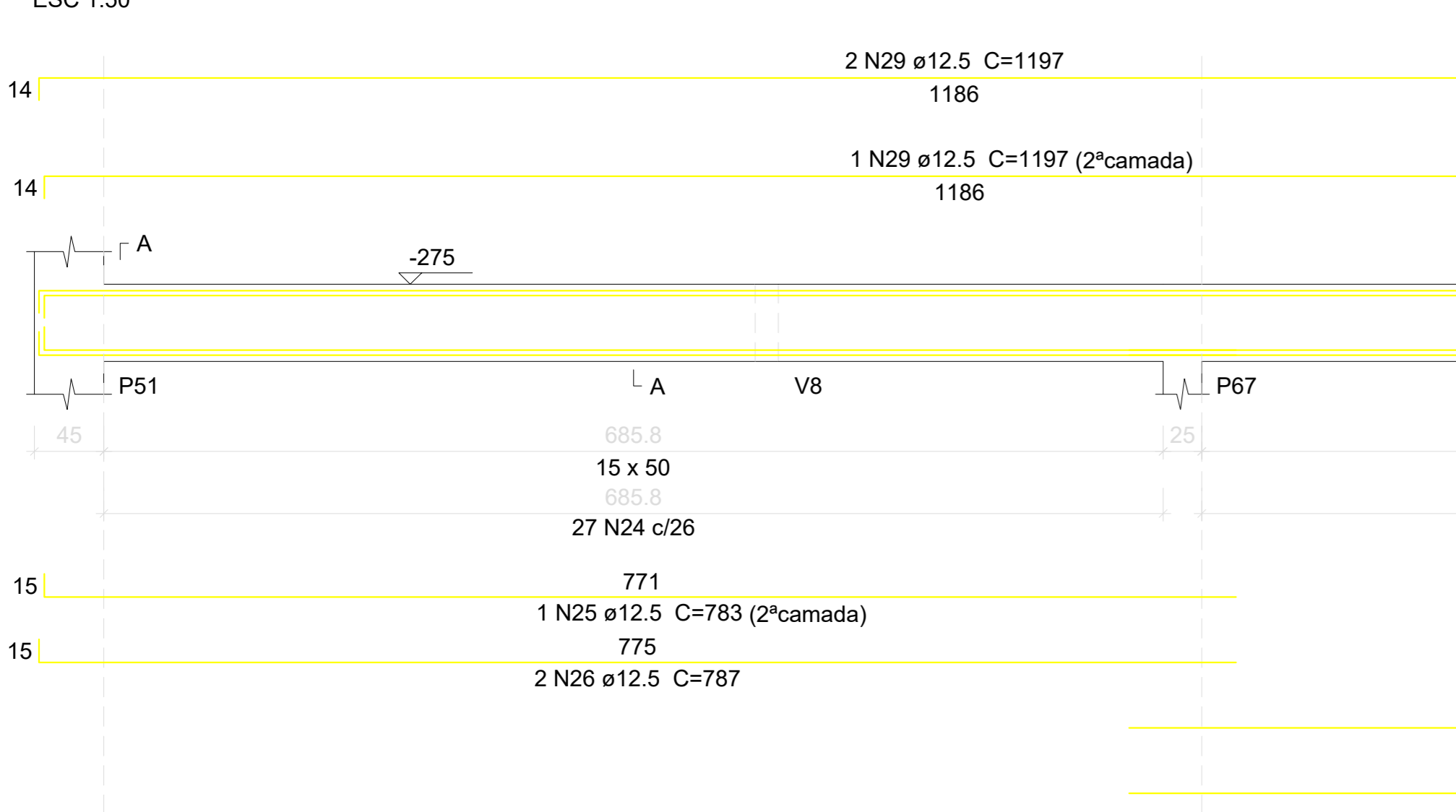
V31 (15 x 50)



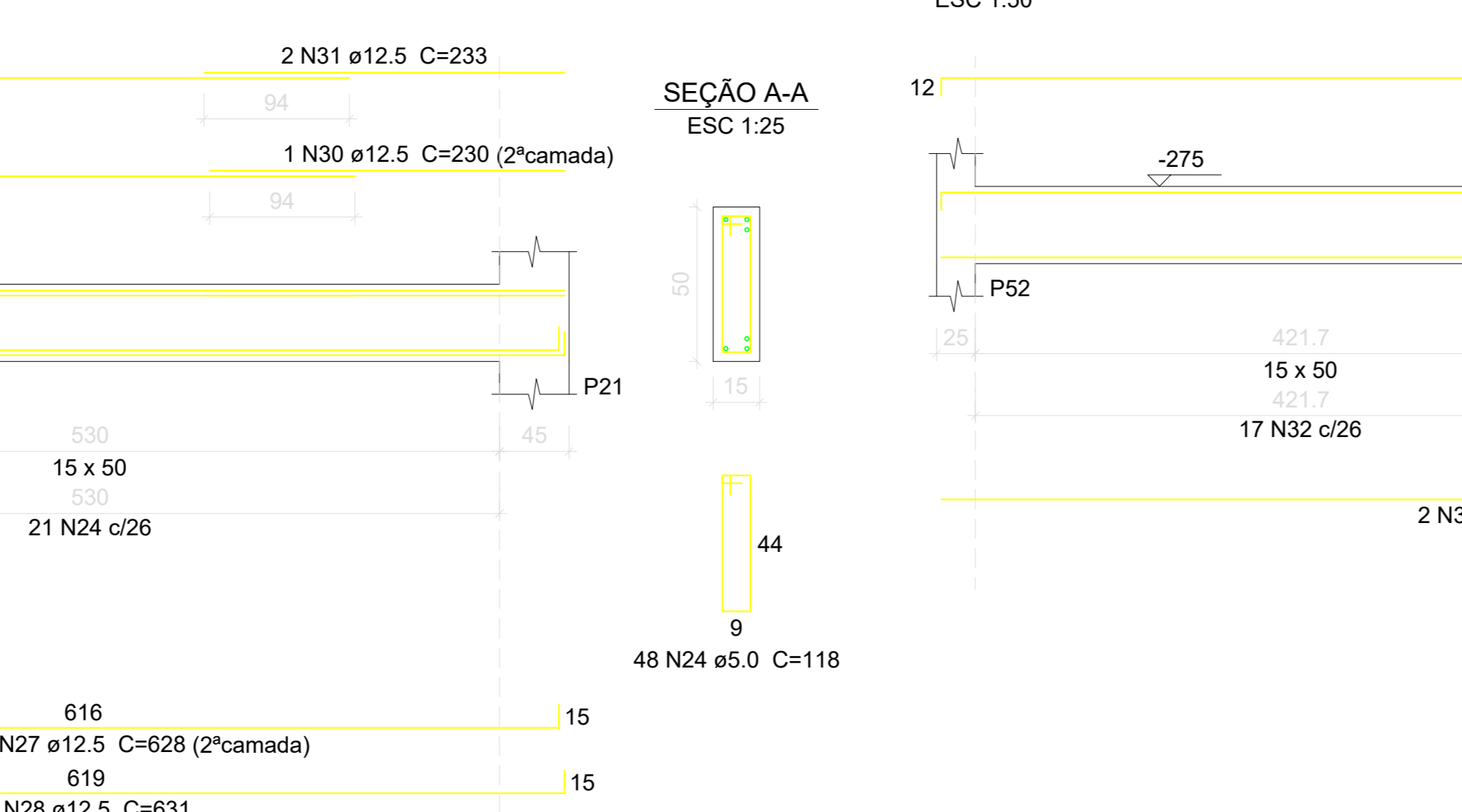
V32 (15 x 50)



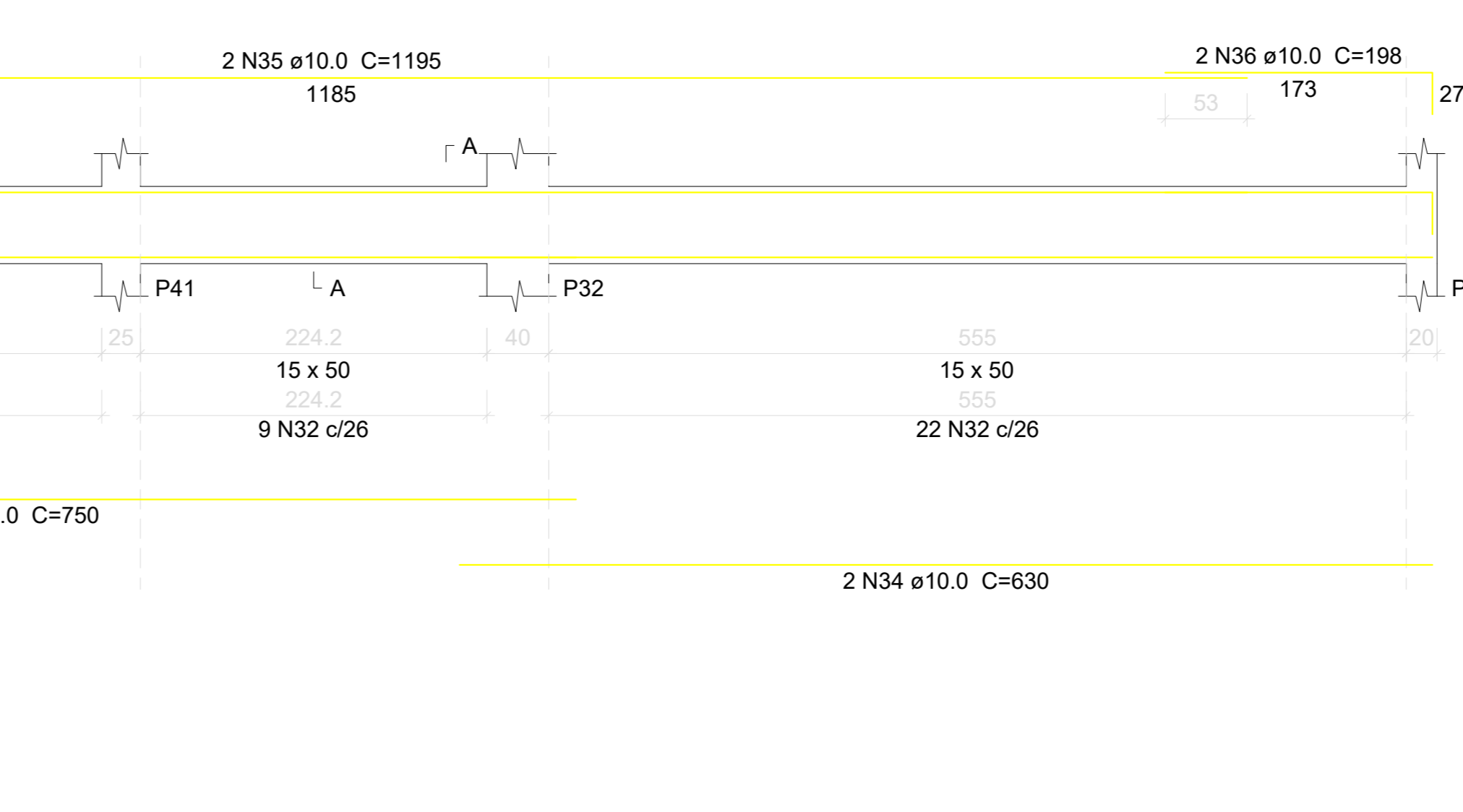
V33 (15 x 50)



V34 (15 x 50)



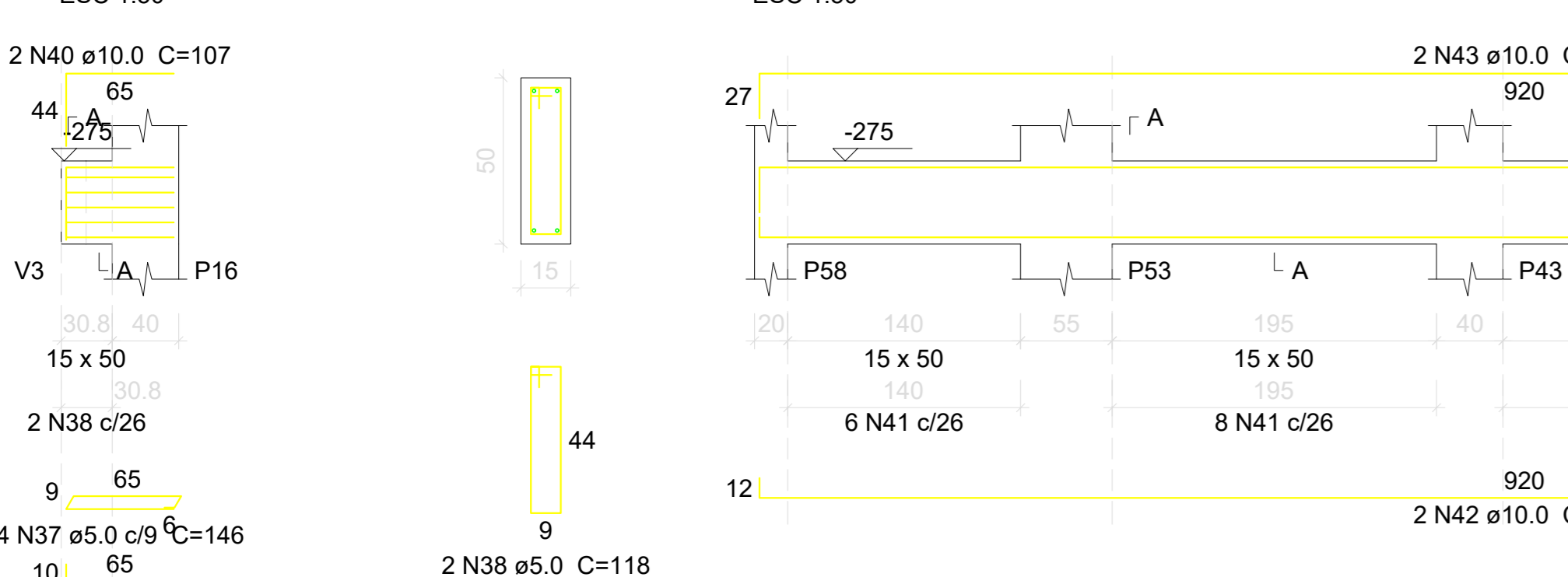
V35 (15 x 50)



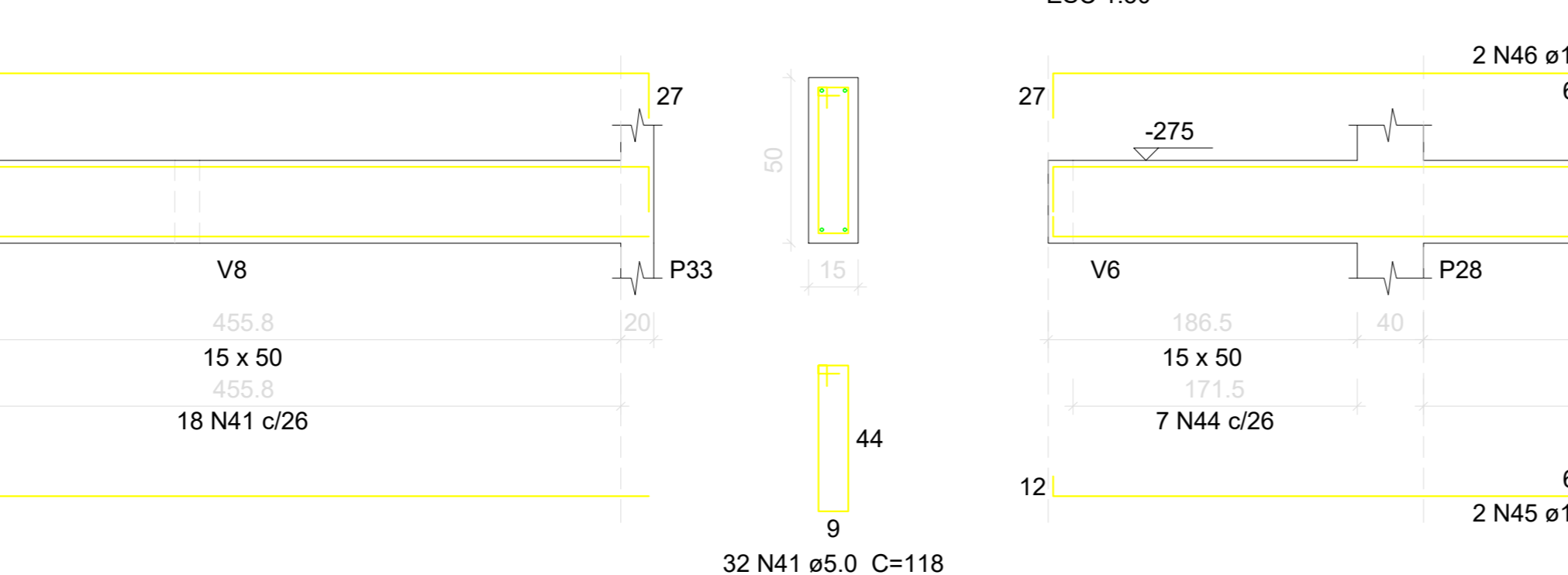
V36 (15 x 50)



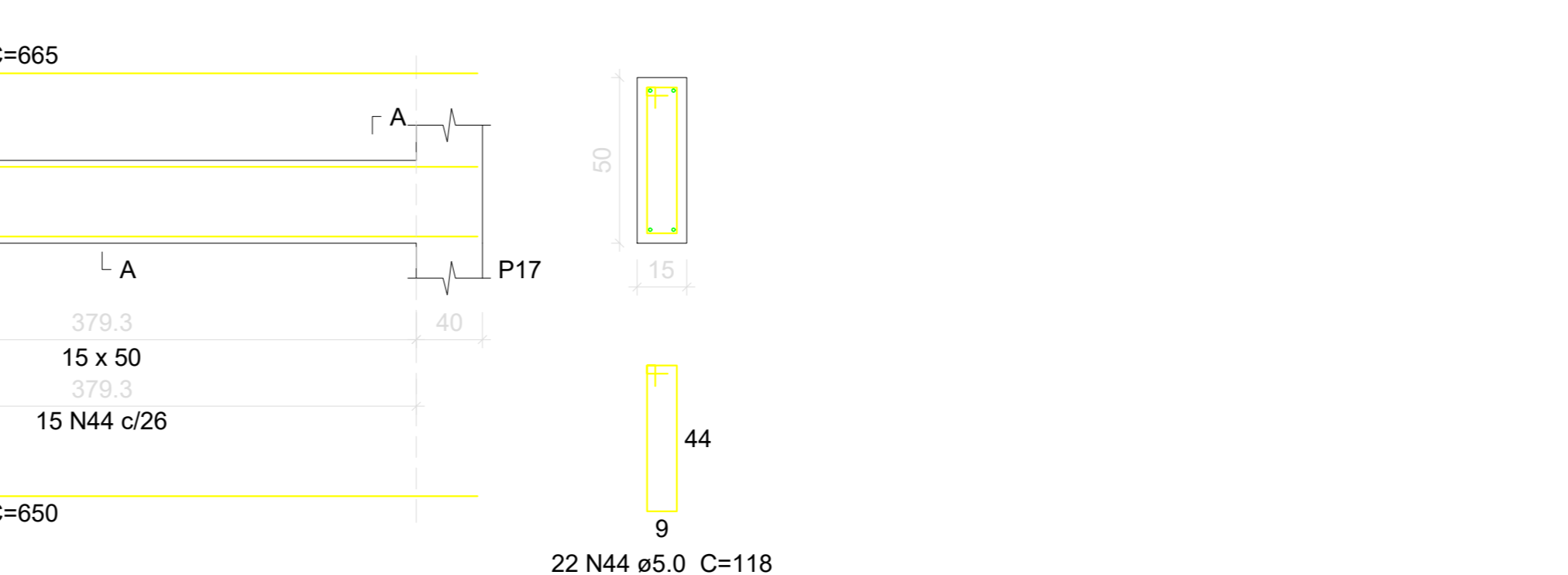
V37 (15 x 50)



V38 (15 x 50)



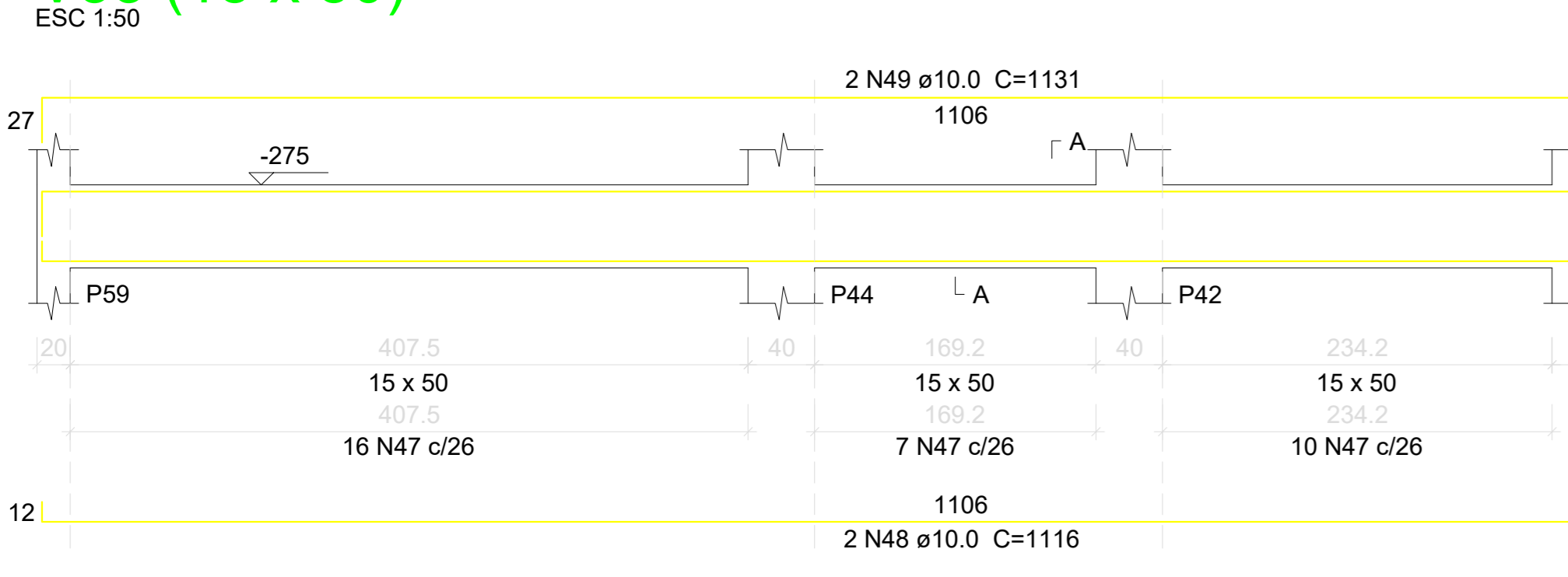
V39 (15 x 50)



V40 (15 x 50)



V41 (15 x 50)



V42 (15 x 50)



V43 (15 x 50)



V44 (15 x 50)



Relação do aço

ELEMENTO	AÇO	N	DIAM (mm)	QUANT	C.UNIT (cm)	C.TOTAL (cm)
V21	CA60	1	5.0	33	118	3894
	CA50	2	10.0	2	919	1838
	CA50	3	10.0	2	944	1888
V22	CA60	4	5.0	68	118	8024
	CA50	5	10.0	2	1000	2000
	CA50	6	10.0	2	965	1930
V23	CA50	7	10.0	2	1200	2400
	CA50	8	10.0	2	742	1484
	CA60	9	5.0	18	118	2124
V24	CA50	10	10.0	2	518	1036
	CA50	11	10.0	2	552	1104
	CA60	12	5.0	30	118	3540
V25	CA50	13	10.0	4	858	3432
	CA60	14	5.0	9	118	1062
	CA50	15	10.0	4	284	1136
V26	CA60	16	5.0	63	118	7434
	CA50	17	6.3	6	456	2736
	CA50	18	10.0	4	1200	4800
V27	CA50	19	10.0	2	630	1260
	CA50	20	10.0	2	617	1234
	CA60	21	5.0	8	118	944
V28	CA50	22	10.0	2	217	434
	CA50	23	10.0	2	275	550
	CA60	24	5.0	48	118	5664
V29	CA50	25	12.5	1	783	783
	CA50	26	12.5	2	787	1574
	CA50	27	12.5	1	628	628
V30	CA50	28	12.5	2	631	1262
	CA50	29	12.5	3	1197	3591
	CA50	30	12.5	1	230	230
V31	CA50	31	12.5	2	233	466
	CA60	32	5.0	48	118	5664
	CA50	33	10.0	2	750	1500
V32	CA50	34	10.0	2	630	1260
	CA50	35	10.0	2	1195	2390
	CA50	36	10.0	2	198	396
V33	CA60	37	5.0	4	146	584
	CA60	38	5.0	2	118	236
	CA50	39	10.0	2	73	146
V34	CA50	40	10.0	2	107	214
	CA60	41	5.0	32	118	3776
	CA50	42	10.0	2	930	1860
V35	CA50	43	10.0	2	969	1938
	CA60	44	5.0	22	118	2596
	CA50	45	10.0	2	650	1300
V36	CA50	46	10.0	2	665	1330
	CA60	47	5.0	38	118	4484
	CA50	48	10.0	2	1116	2232
V37	CA50	49	10.0	2	1131	2262

Resumo do aço

AÇO	DIAM (mm)	C.TOTAL (m)	PESO (kg)
CA50	6.3	27.4	6.7
CA50	10.0	433.6	267.3
CA50	12.5	85.4	82.2
CA60	5.0	500.3	77.1
PESO TOTAL (kg)			
CA50		356.2	
CA60		77.1	

Volume de concreto (C-25) = 8.9 m³
Área de forma = 136.39 m²

A & V PROJETOS DE ENGENHARIA

PROJETO: **PROJETO ESTRUTURAL HOSPITAL DR ESTEVAM**

INTERESSADO: **PREFEITURA DE SOBRAL**

ENDEREÇO: -

MUNICÍPIO: **SOBRAL-CE**

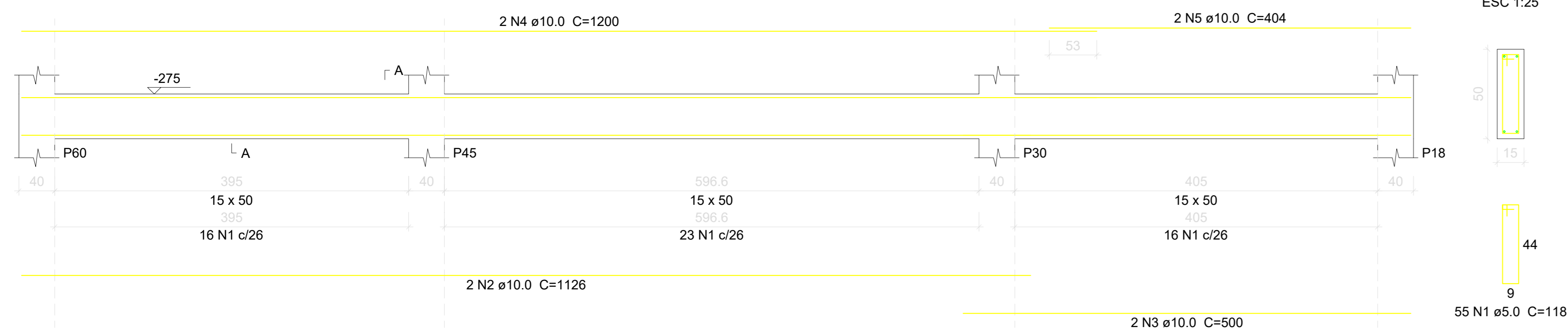
DESENHOS DA PRANCHA	ESCALA
DET. VIGAS SUBSOLO FLO3	INDICADA

ESCALA DE FOLHOS: 10 - 1

COR	PESM
1	1.00
2	0.50
3	0.30
4	0.20
5	0.15
6	0.10
7	0.09
8	0.08
9	0.07
10	0.30

V34 (15 x 50)

ESC 1:50



Relação do aço

ELEMENTO	AÇO	N	DIAM (mm)	QUANT	C.UNIT (cm)	C.TOTAL (cm)
V34	CA60	1	5.0	55	118	6490
	CA50	2	10.0	2	1126	2252
	CA50	3	10.0	2	500	1000
	CA50	4	10.0	2	1200	2400
	CA50	5	10.0	2	404	808

Resumo do aço

AÇO	DIAM (mm)	C.TOTAL (m)	PESO (kg)
CA50	10.0	64.6	39.8
CA60	5.0	64.9	10
PESO TOTAL (kg)			
CA50			39.8
CA60			10

Volume de concreto (C-25) = 1.17 m³
Área de forma = 17.9 m²

A & V PROJETOS DE ENGENHARIA

PROJETO: **PROJETO ESTRUTURAL HOSPITAL DR ESTEVAM**

INTERESSADO: **PREFEITURA DE SOBRAL**

ENDEREÇO: **-**

MUNICÍPIO: **SOBRAL-CE**

DESENHOS DA PRANCHA	ESCALA
DET. VIGAS SUBSOLO FL 04	INDICADA
DET. LAJES NÍVEL 365	INDICADA

ESCALA DE FUNDIÇÃO 10 : 1

1	1.00
2	0.50
3	0.30
4	0.20
5	0.15
6	0.10
7	0.07
8	0.10
9	0.09
10	0.30

COORDENADA