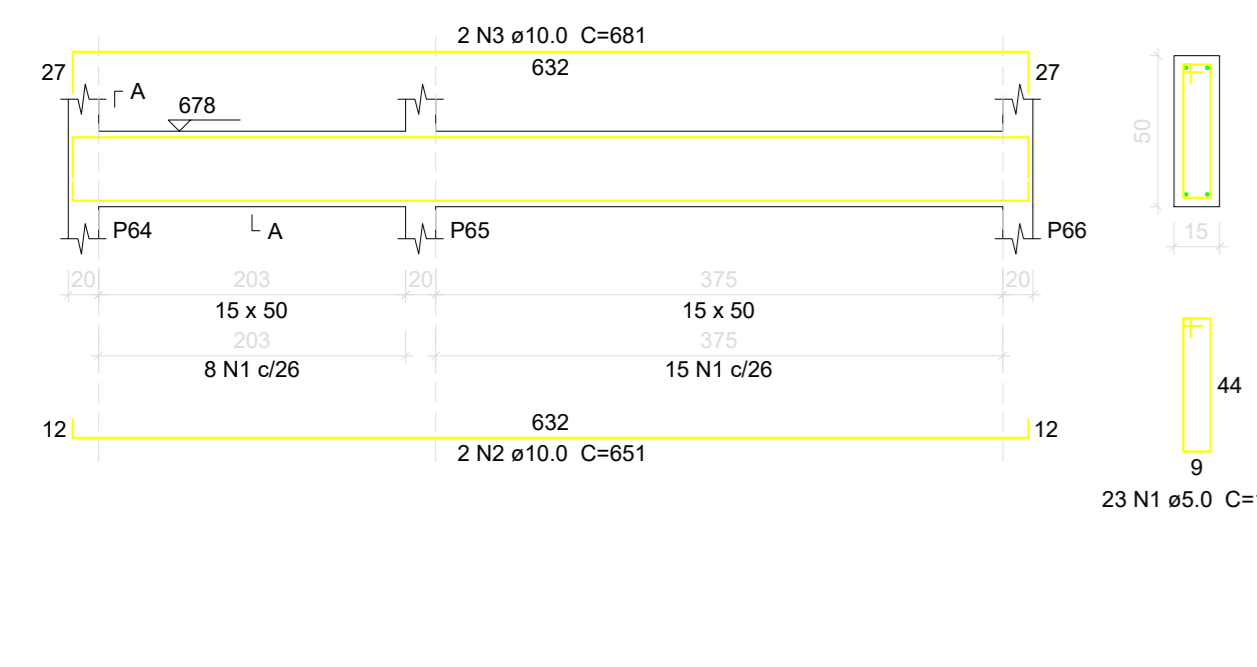
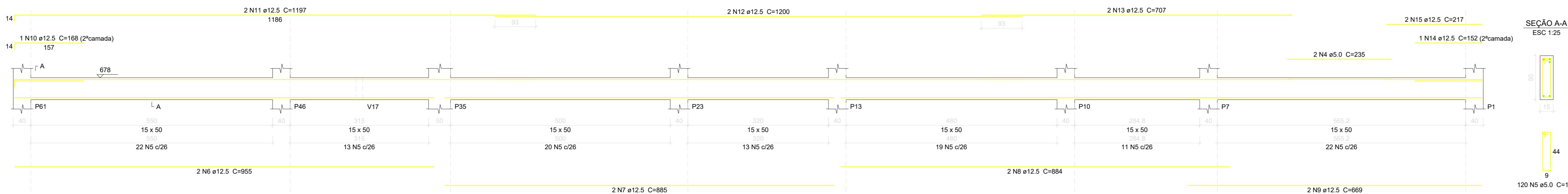


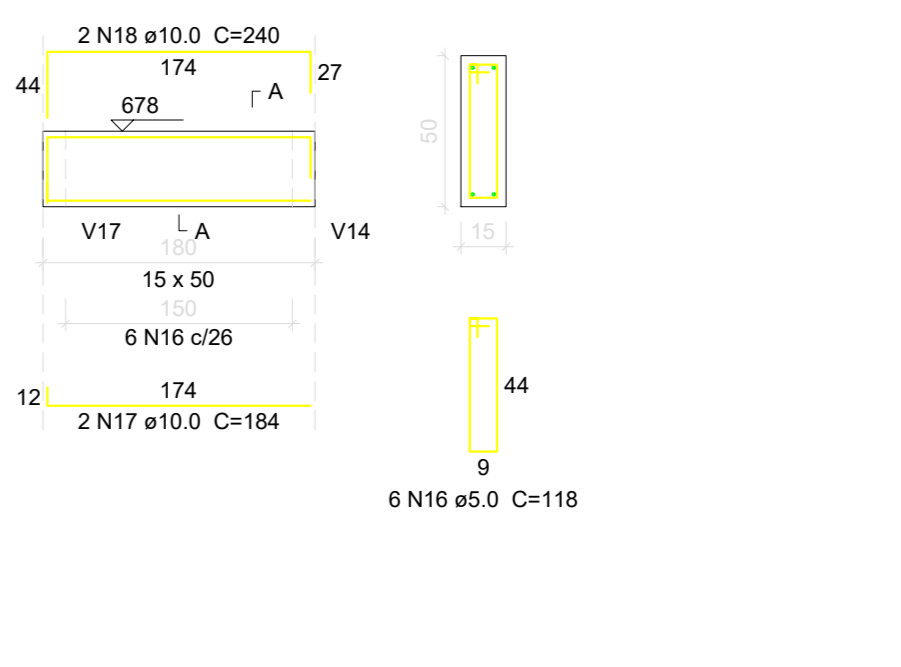
V25 (15 x 50)



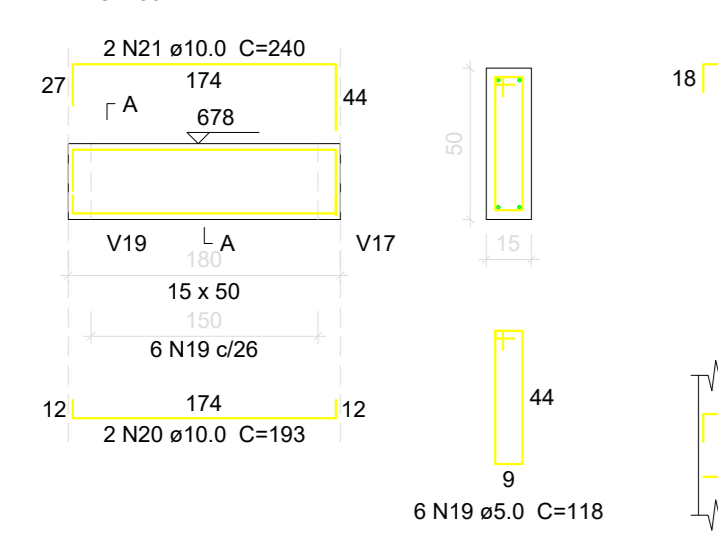
V26 (15 x 50)



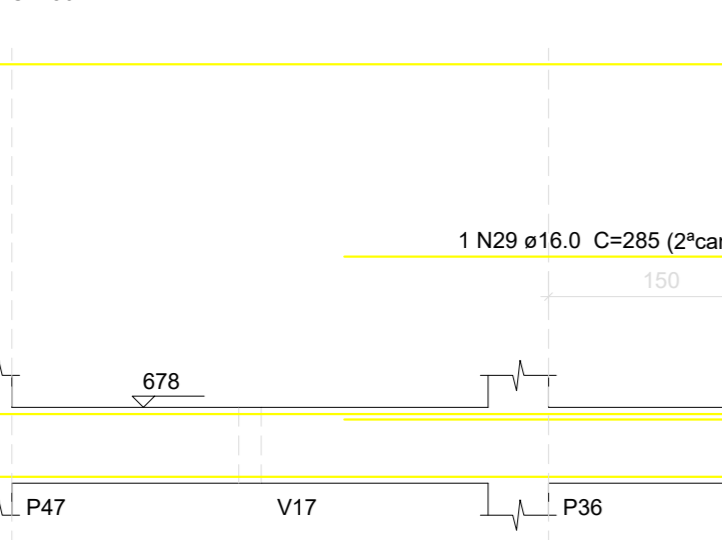
V27 (15 x 50)



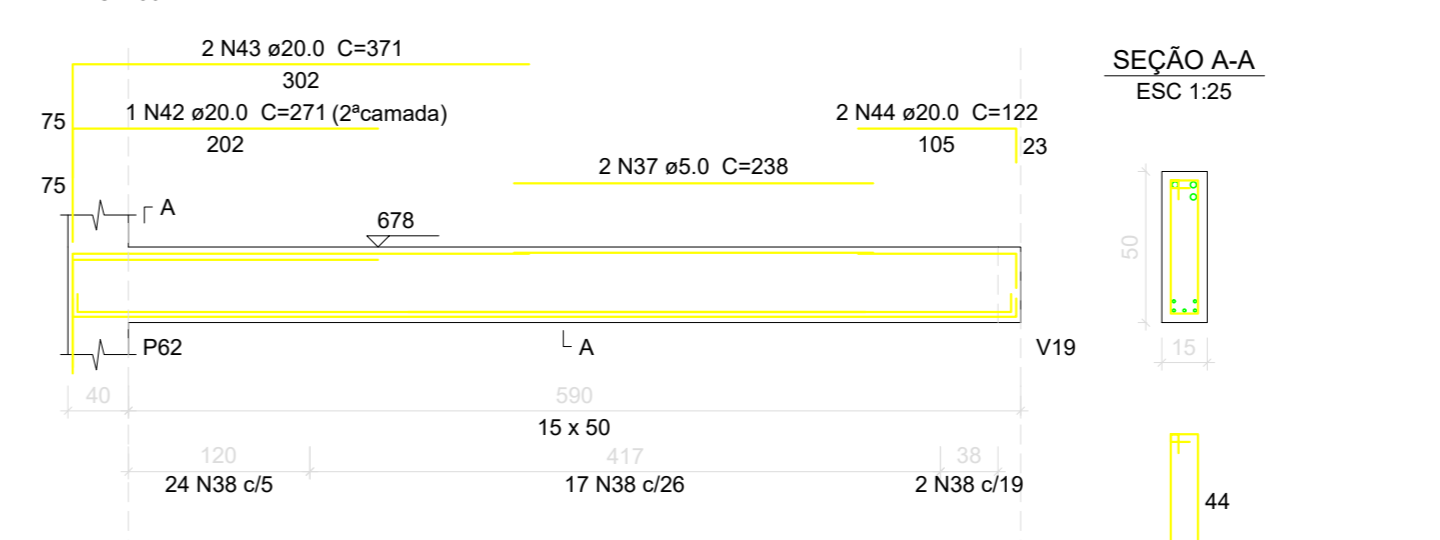
V28 (15 x 50)



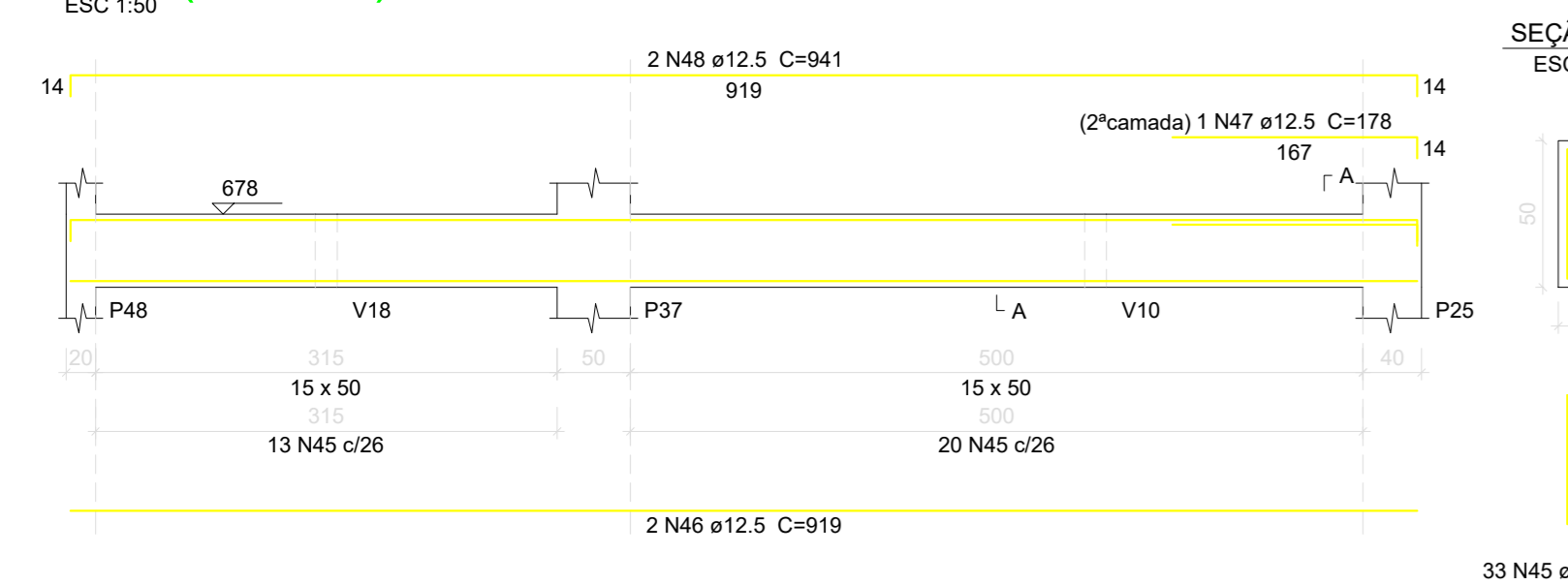
V29 (var)



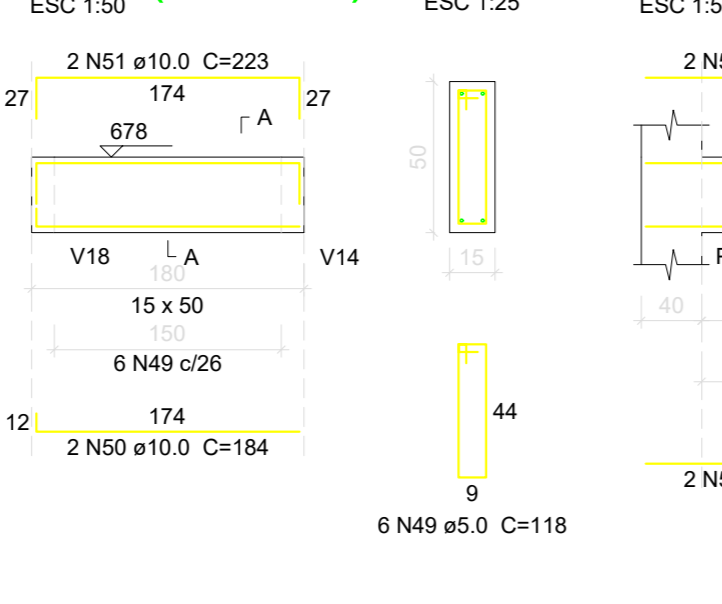
V30 (15 x 50)



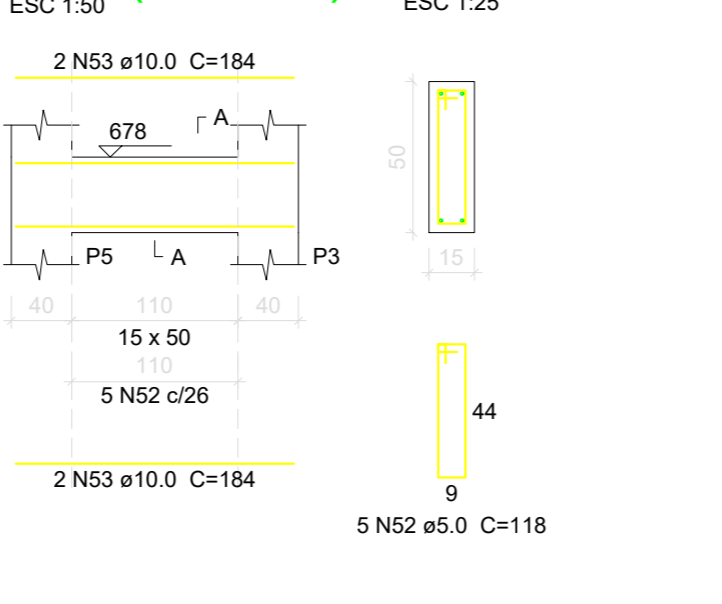
V31 (15 x 50)



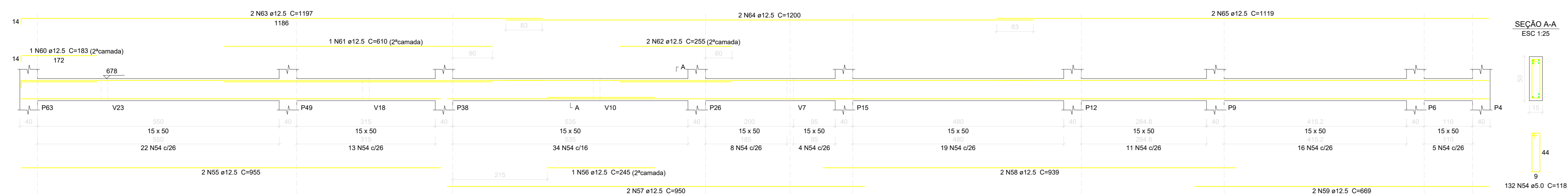
V32 (15 x 50)



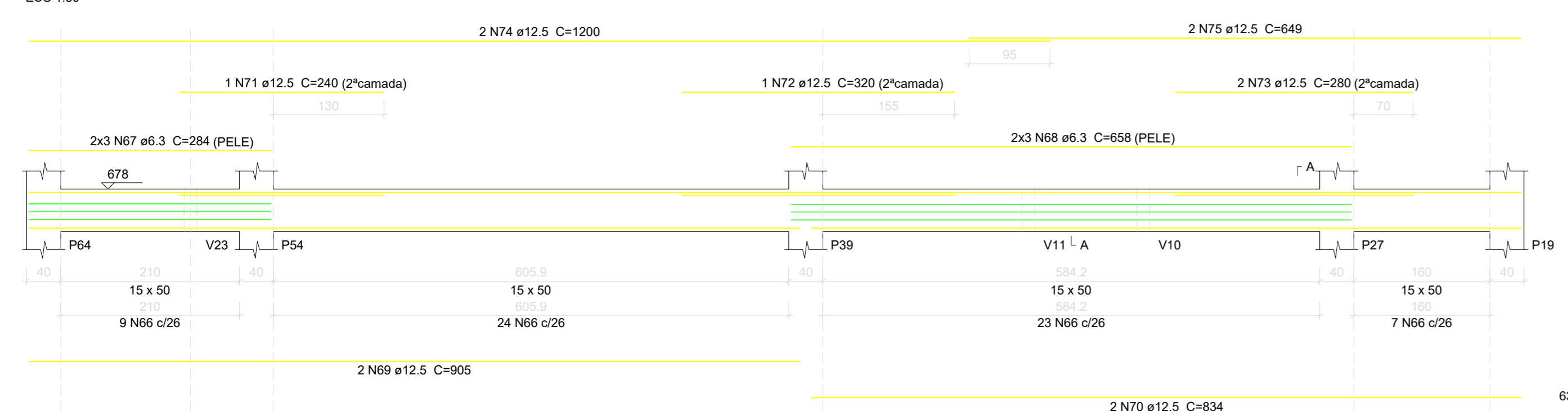
V33 (15 x 50)



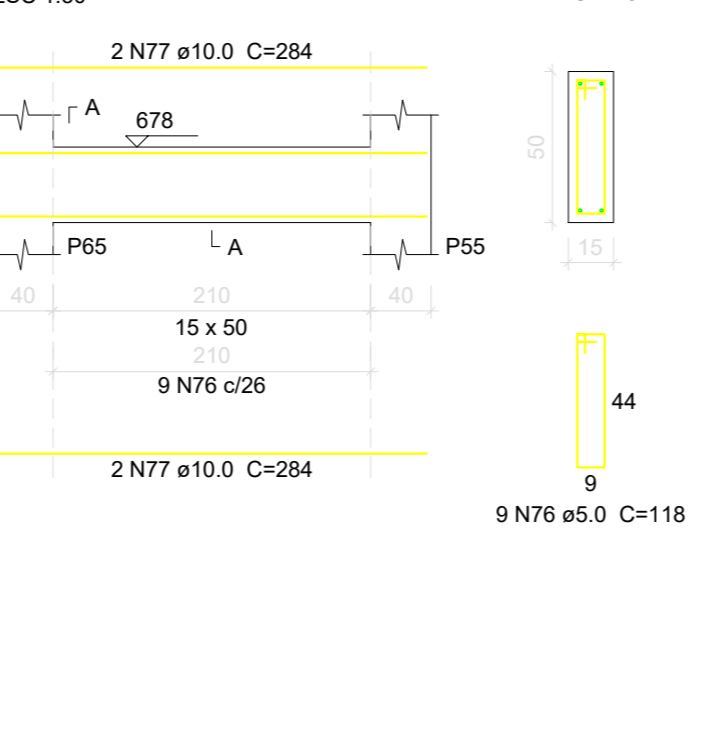
V34 (15 x 50)



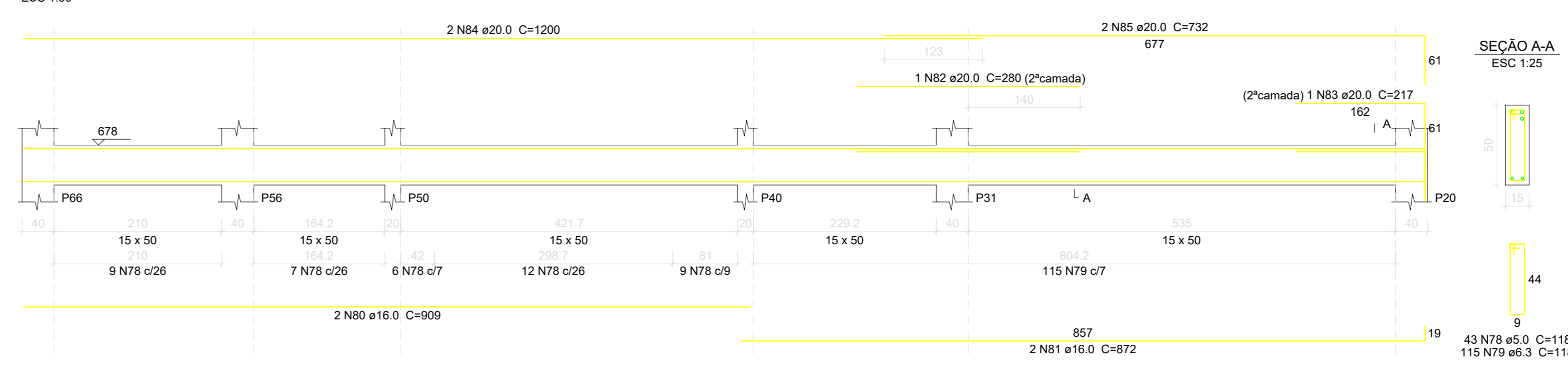
V35 (15 x 50)



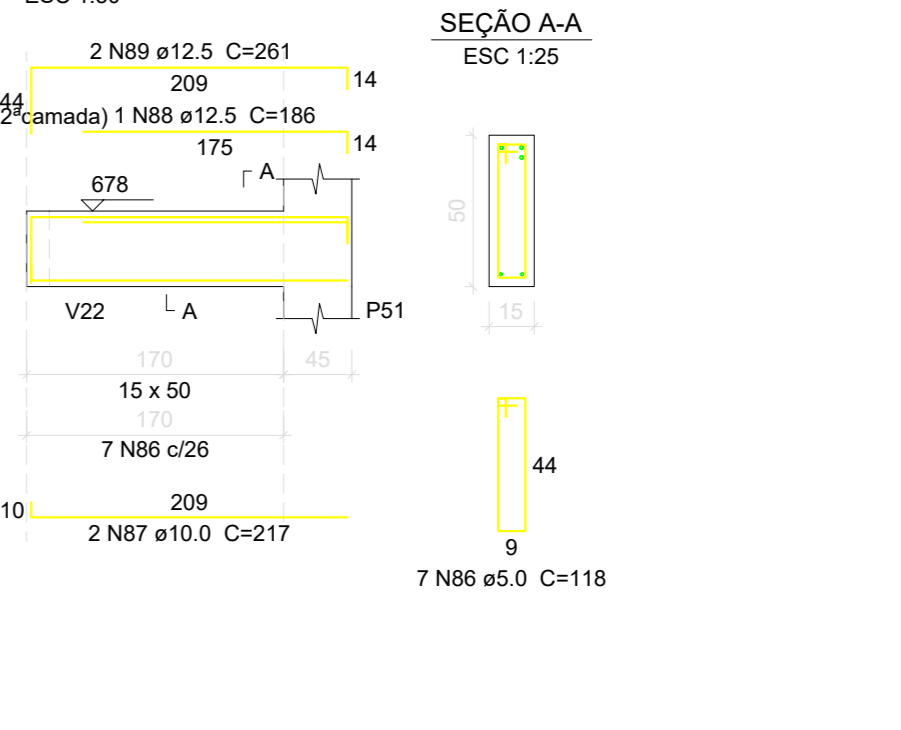
V36 (15 x 50)



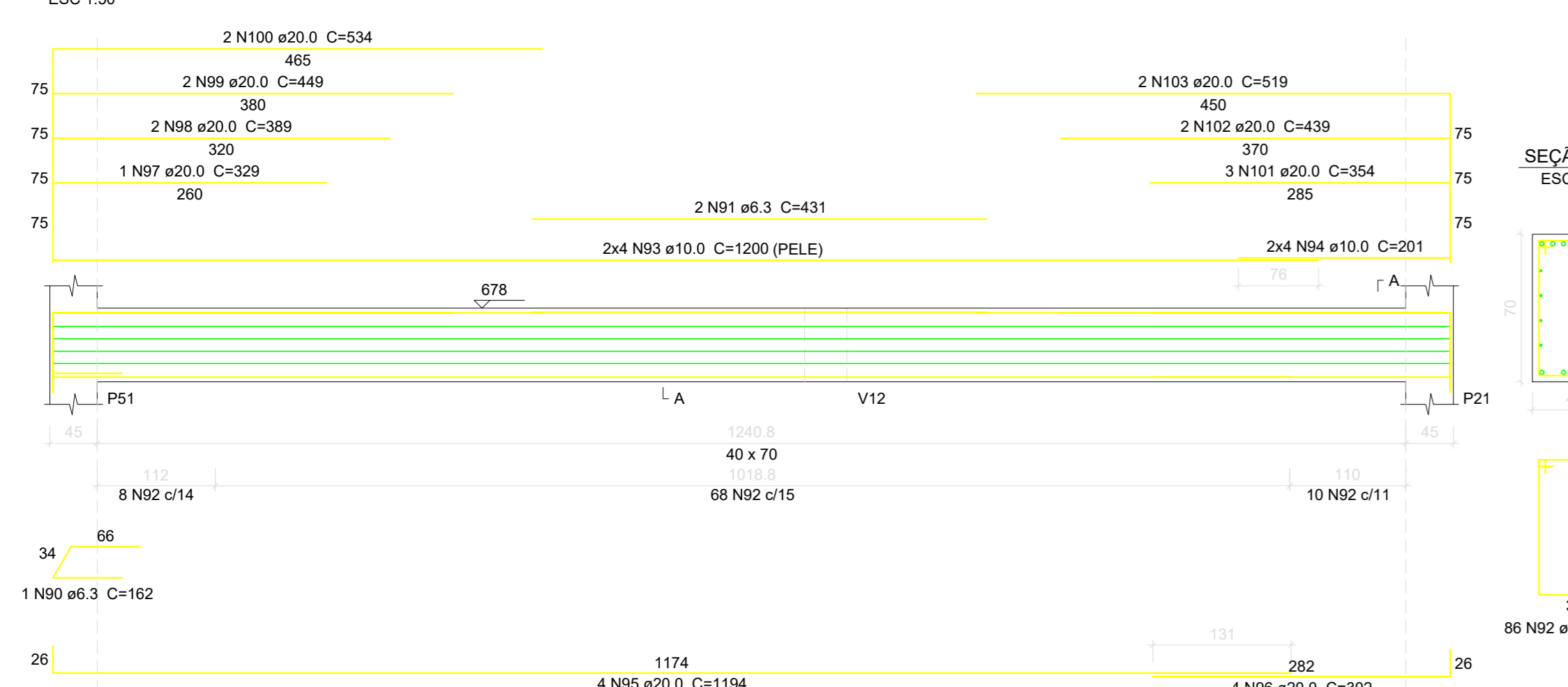
V37 (15 x 50)



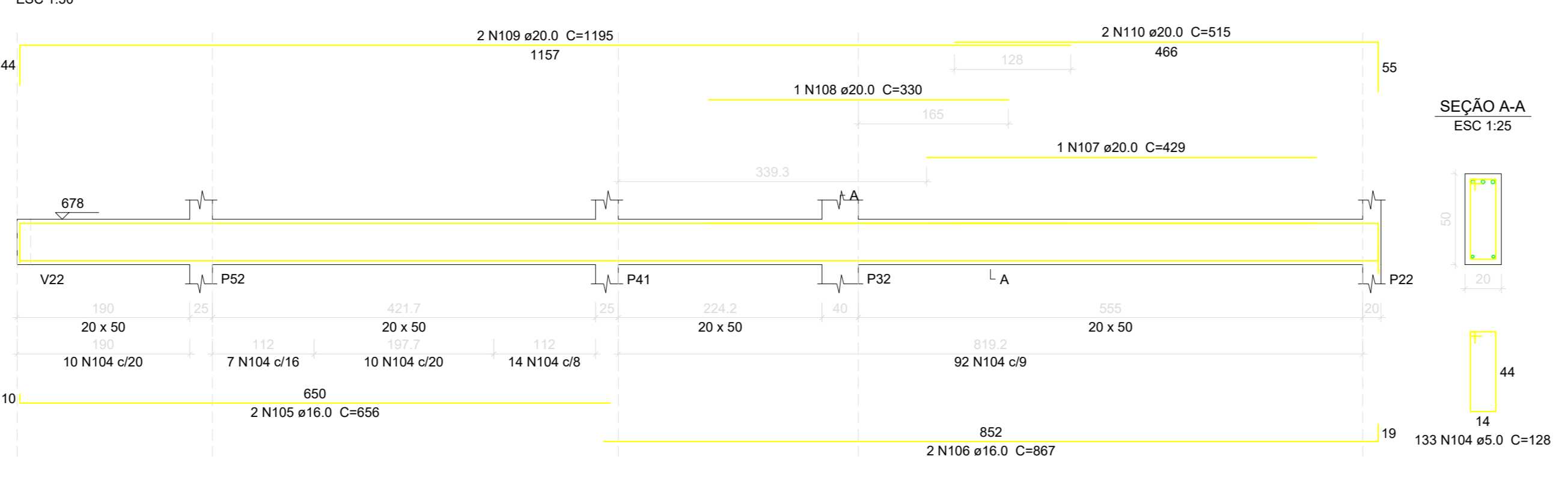
V38 (15 x 50)



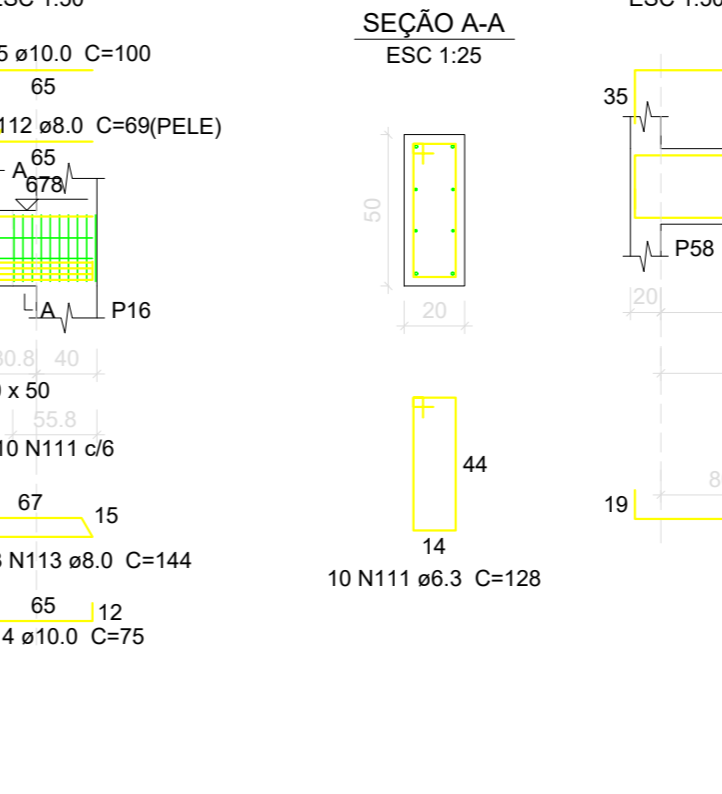
V39 (40 x 70)



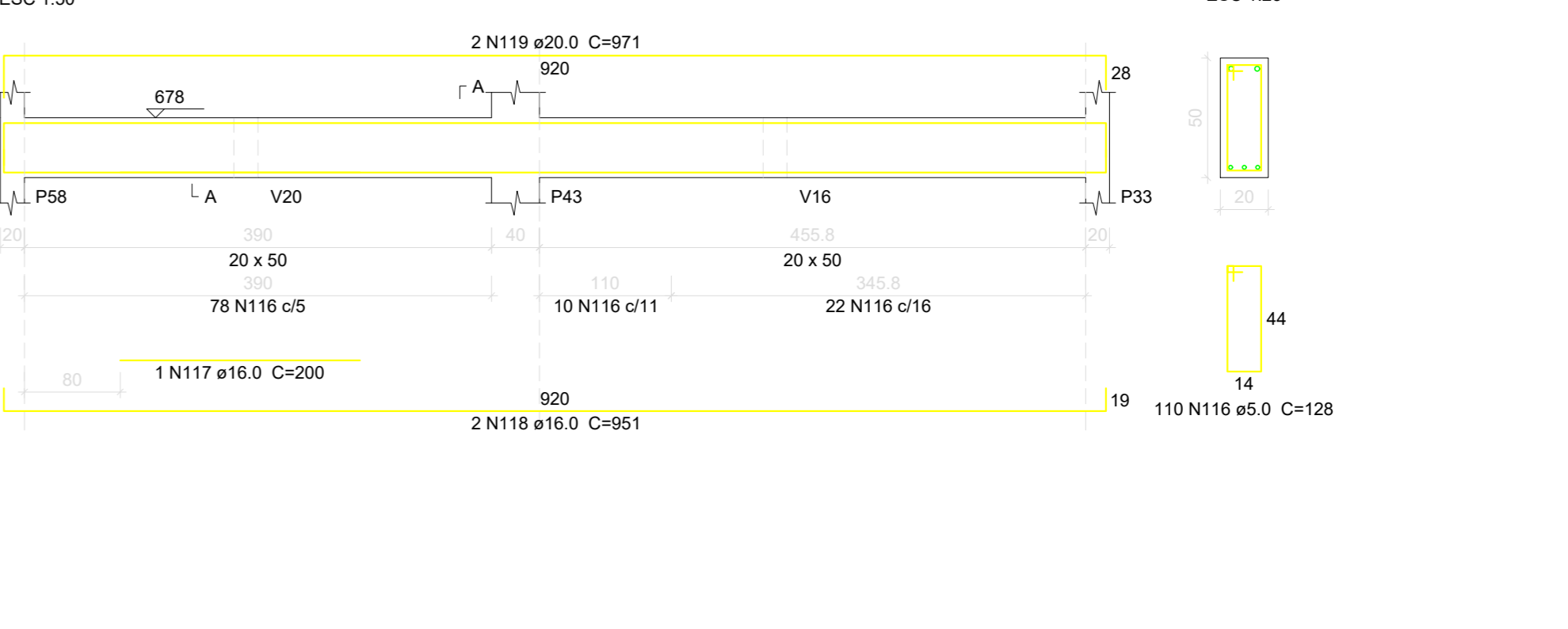
V40 (20 x 50)



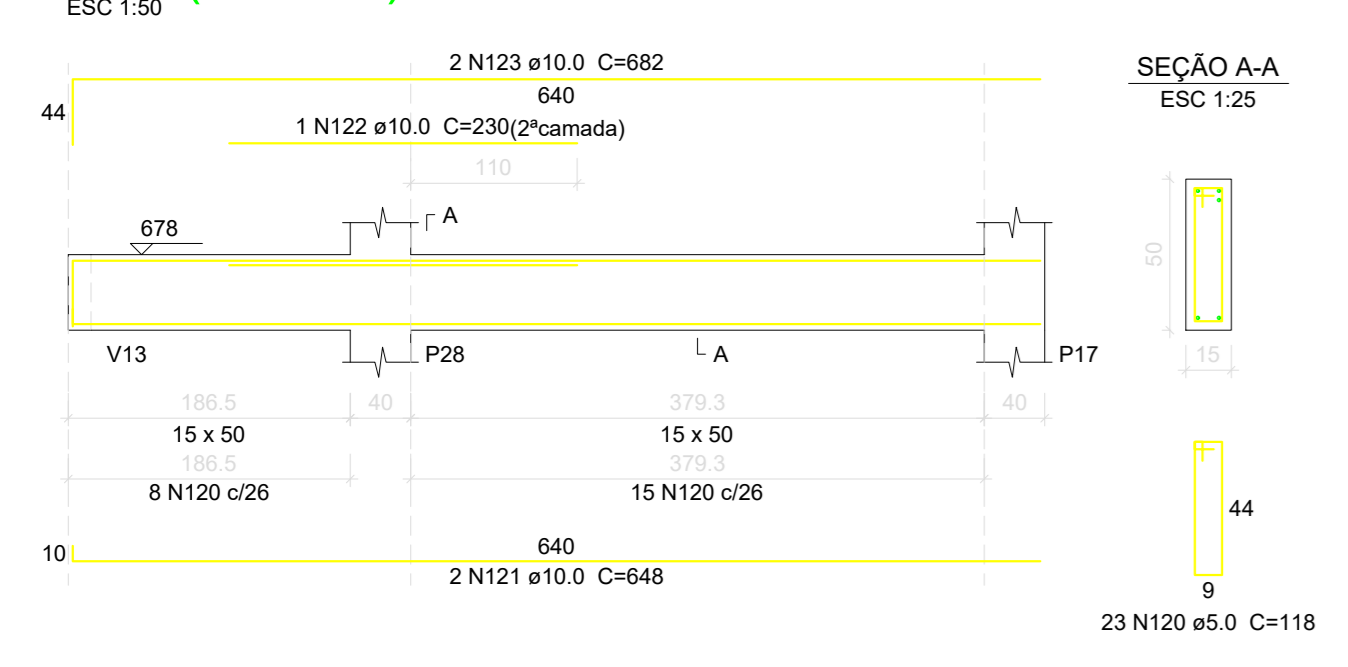
V41 (20 x 50)



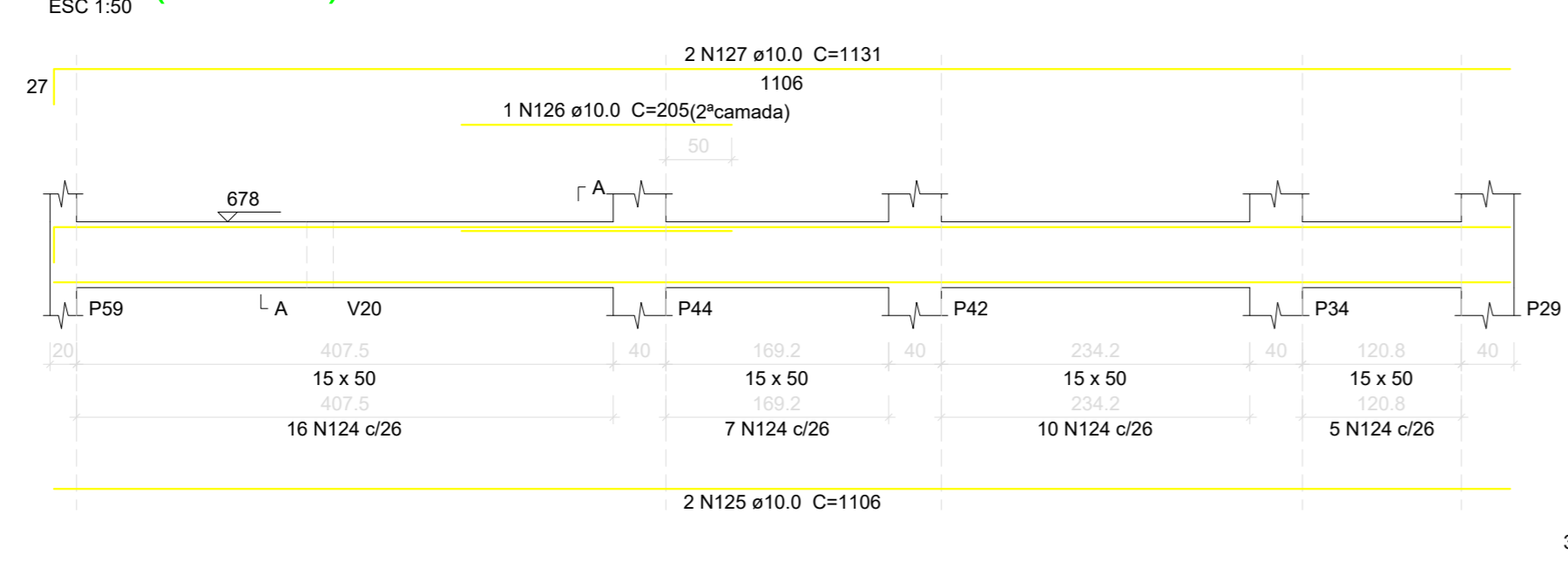
V42 (20 x 50)



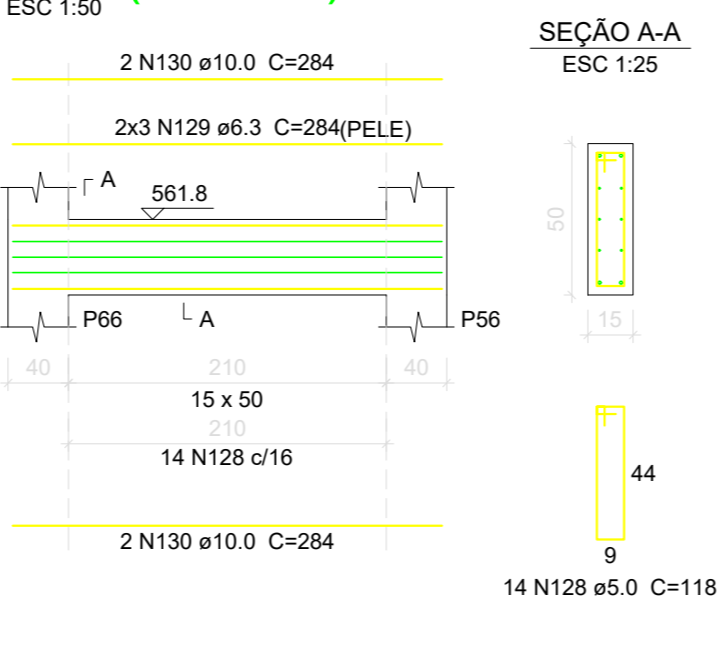
V43 (15 x 50)



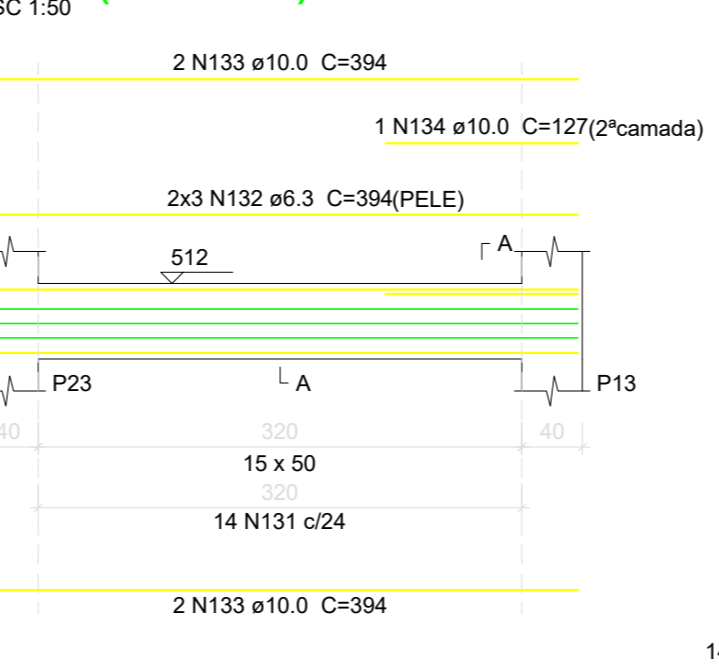
V44 (15 x 50)



V45 (15 x 50)



V46 (15 x 50)



V47 (15 x 50)

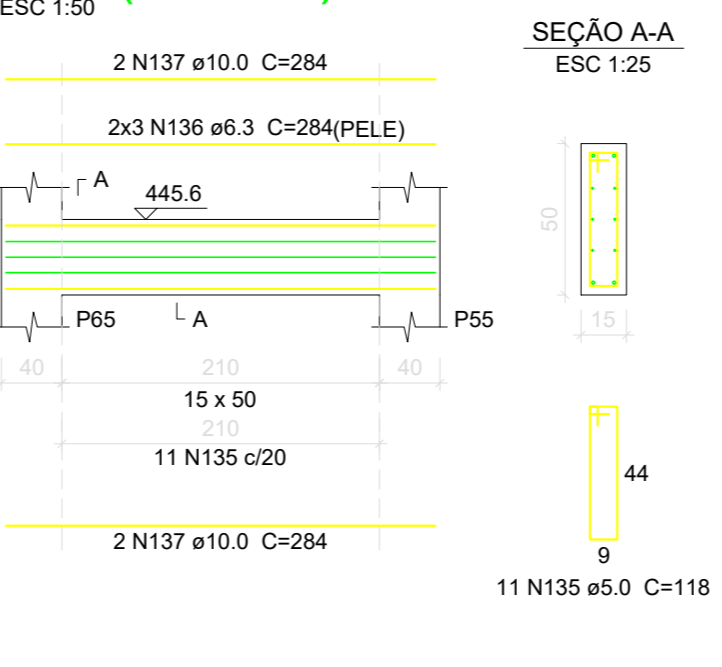


Table with columns: ELEMENTO, AÇO, N, DIAM (mm), QUANT, C.UNIT (cm), C.TOTAL (cm). Lists quantities for various steel reinforcement elements (V25 to V47).

Table titled 'Resumo do aço' with columns: AÇO, DIAM (mm), C.TOTAL (m), PESO (kg). Summarizes steel quantities and weights.

Volume de concreto (C-25) = 20.71 m³

Área de forma = 274.01 m²

A & V PROJETOS DE ENGENHARIA

Project information form including fields for PROJETO, INTERESSADO, ENDEREÇO, MUNICÍPIO, and data fields.

Additional project details form with fields for data and a signature line.