

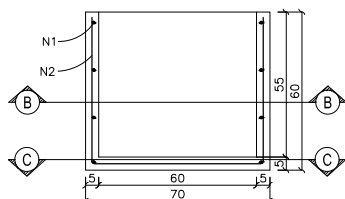
B

A

PAREDE A A (0,6m)
PAREDE A A (0,6m)

4un x 2,25m x 0,109kg/m = 0,981kg
5un x 1,75m x 0,109kg/m = 0,954kg
TOTAL FERRO 4.2mm => 1,935kg + 10% = 2,13kg

CORTE A-A
ESCALA: 1:20



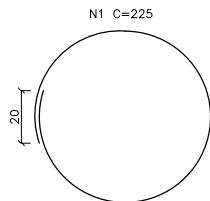
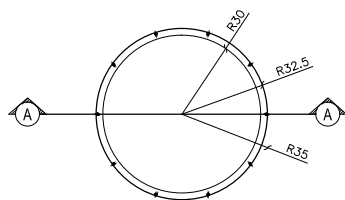
II & A A E I A A E A A E A A E F I
O H & D A A E I A A E A A E F I
X U S W T O A A E I A A E F I

CONCRETO FCK 15MPa
INSUMOS:

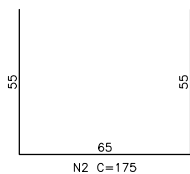
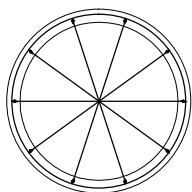
Cimento 450 (x 294 kg) M 23,520 kg
Areia 450 (x 0,89) M 0,071 t
Brita 450 (x 0,84) M 0,067 t

PAREDE EXTERNA : I & A A E I A A E A A E F I
PAREDE INTERNA : I & A A E I A A E A A E F I
FUNDO : O H & D A A E I A A E A A E F I
7 U O C B O U T O A A E I A A E F I

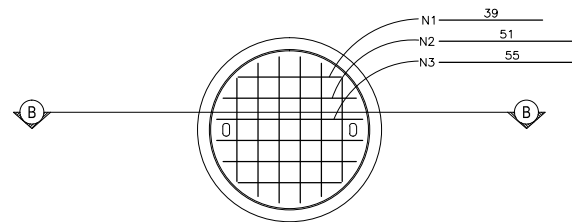
CORTE B-B
ESCALA: 1:20



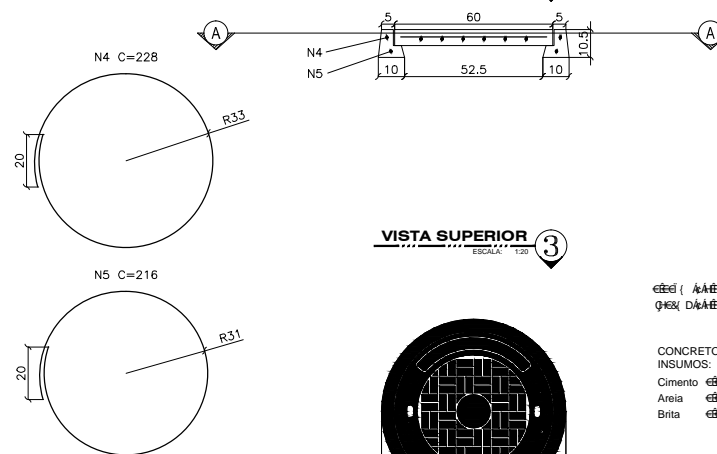
CORTE C-C
ESCALA: 1:20



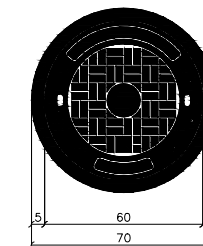
CORTE A-A
ESCALA: 1:20



CORTE B-B
ESCALA: 1:20



VISTA SUPERIOR
ESCALA: 1:20



II & A A E I A A E A A E F I
O H & D A A E I A A E A A E F I
X U S W T O A A E I A A E F I

CONCRETO FCK 15MPa
INSUMOS:
Cimento 450 (x 294 kg) M 9,114 kg
Areia 450 (x 0,89) M 0,028 t
Brita 450 (x 0,84) M 0,026 t

PAREDE A A (0,6m) : 39,0cm = 156,0cm
PAREDE A A (0,6m) : 51,0cm = 204,0cm
PAREDE A A (0,6m) : 55,0cm = 220,0cm
PAREDE A A (0,6m) : 228,0cm = 228,0cm
PAREDE A A (0,6m) : 216,0cm = 216,0cm
1,024,0cm

10,2m x 0,109kg/m = 1,12kg + 10% = 1,23kg



PREFEITURA DE
SOBRAL
Secretaria da Infraestrutura

RESPONSÁVEL TÉCNICO

EXECUÇÃO DE REDE COLETORA DE ÁGUAS SERVIDAS - DISTRITO DE RAFAEL ARRUDA - SOBRAL/CE

DESENHO: DAVID BASTOS

DATA: OUT/2019

CONTEÚDO:
PLANTA DE SITUAÇÃO

PRANCHA

4 4

B

A