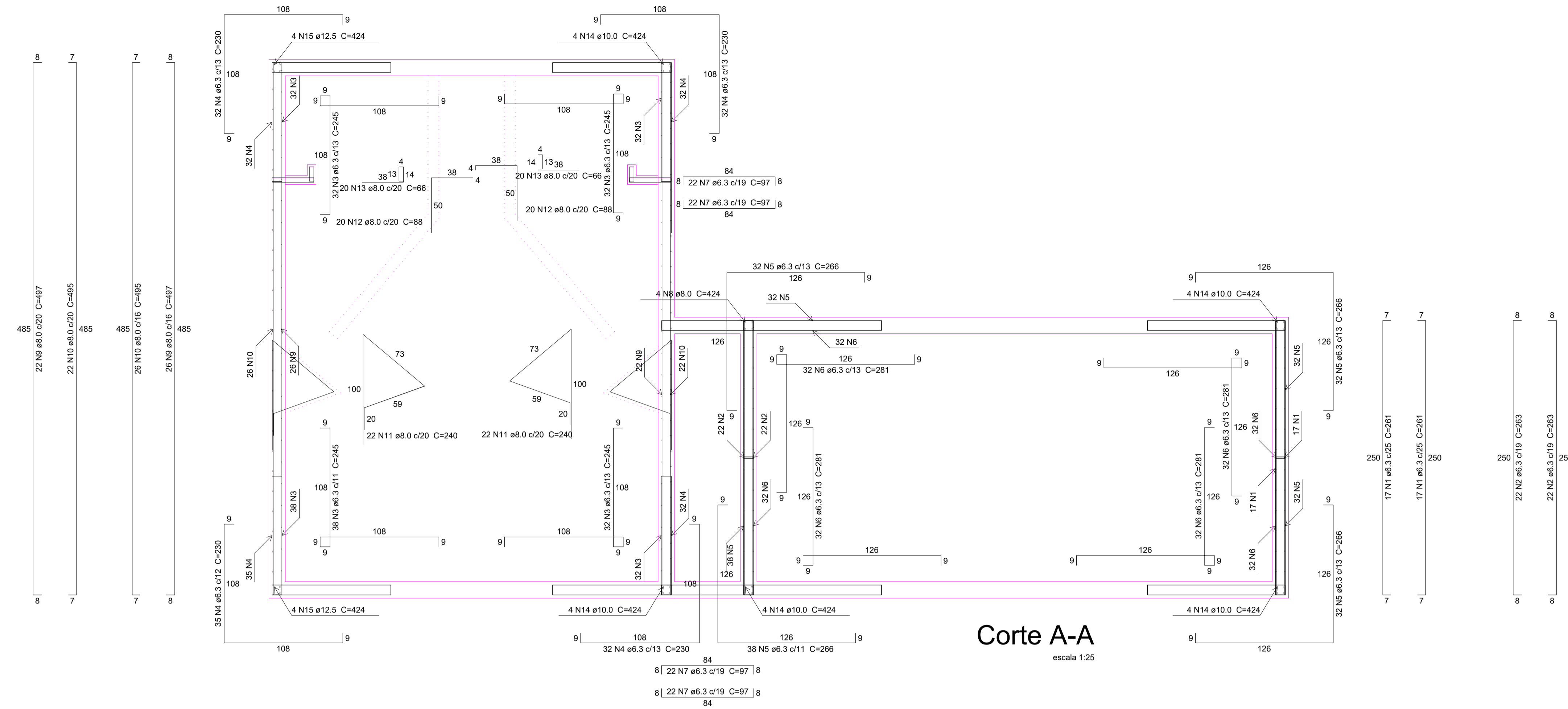


Relação do aço

ELEMENTO	AÇO	N	DIAM	Q	UNIT (cm)	C.TOTAL (cm)
Corte A-A	CA50	1	6.3	34	261	8874
	CA50	2	6.3	44	263	11572
	CA50	3	6.3	134	245	32830
	CA50	4	6.3	131	230	30130
	CA50	5	6.3	134	266	35644
	CA50	6	6.3	128	281	35968
	CA50	7	6.3	88	97	8538
	CA50	8	8.0	4	424	1696
	CA50	9	8.0	48	497	23856
	CA50	10	8.0	48	495	23760
	CA50	11	8.0	44	240	10560
	CA50	12	8.0	40	88	3520
Corte B-B	CA50	16	6.3	112	245	27440
	CA50	15	12.5	8	424	3392
	CA50	17	6.3	114	230	26220
	CA50	18	8.0	40	495	19800
	CA50	19	8.0	40	497	19880
	CA50	20	8.0	36	89	3204
	CA50	21	8.0	36	67	2412
	CA50	22	10.0	16	364	5824
	CA50	23	6.3	16	263	4208
	CA50	24	8.0	8	84	672
	CA50	25	8.0	8	229	1832
	CA50	26	8.0	8	243	1944
Corte C-C	CA50	27	10.0	8	84	672
	CA50	28	6.3	104	263	27352
	CA50	29	6.3	152	277	42104
	CA50	30	6.3	152	262	39824
	CA50	31	8.0	8	494	3952
Corte D-D	CA50	32	10.0	8	494	3952

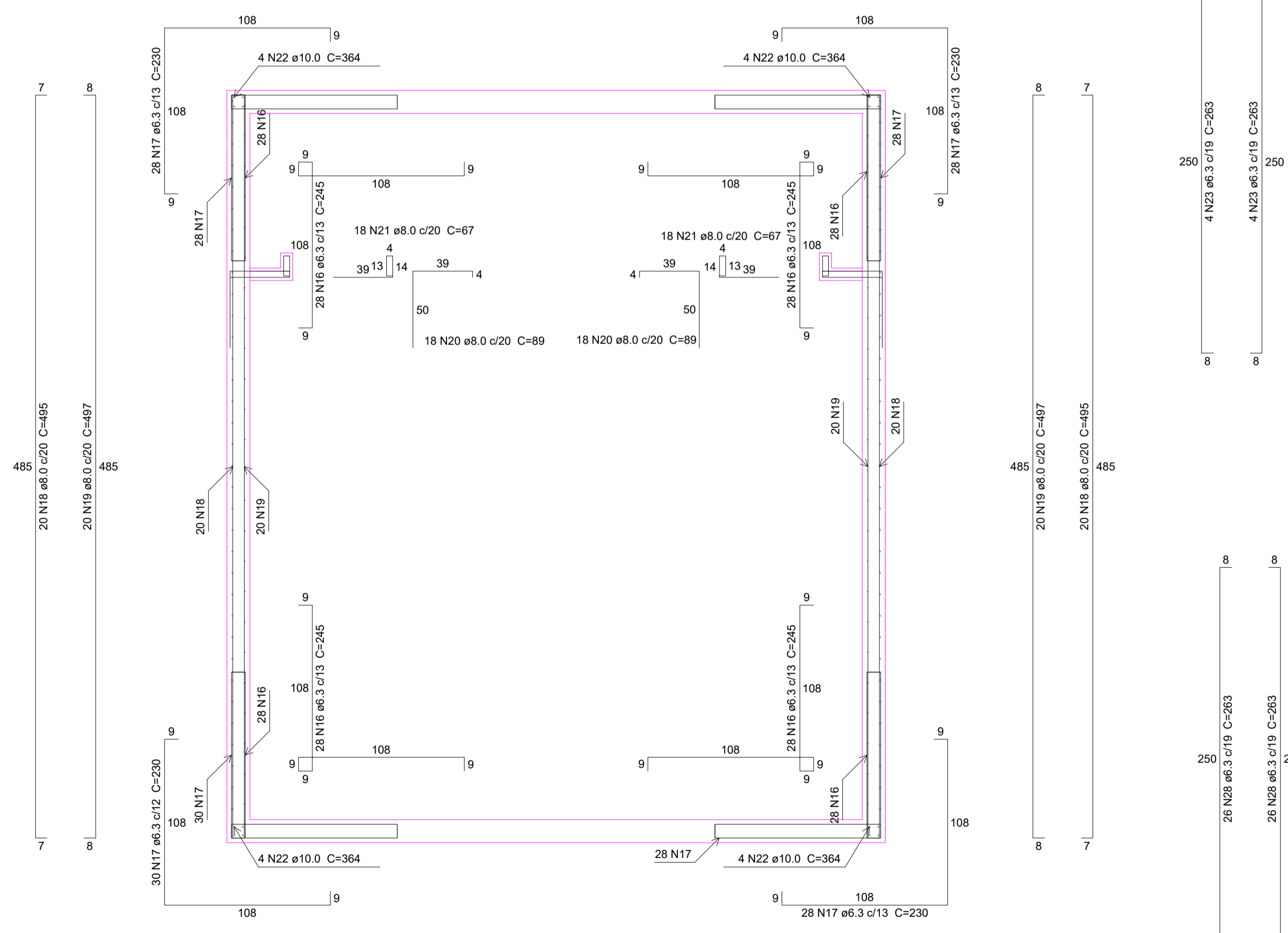
Resumo do aço

AÇO	DIAM	C.TOTAL (m)	PESO + 10 % (kg)
CA50	6.3	3307.1	890.2
	8.0	1197.3	519.7
	10.0	189.3	128.4
	12.5	34	35.9
PESO TOTAL			
CA50	1574.1		



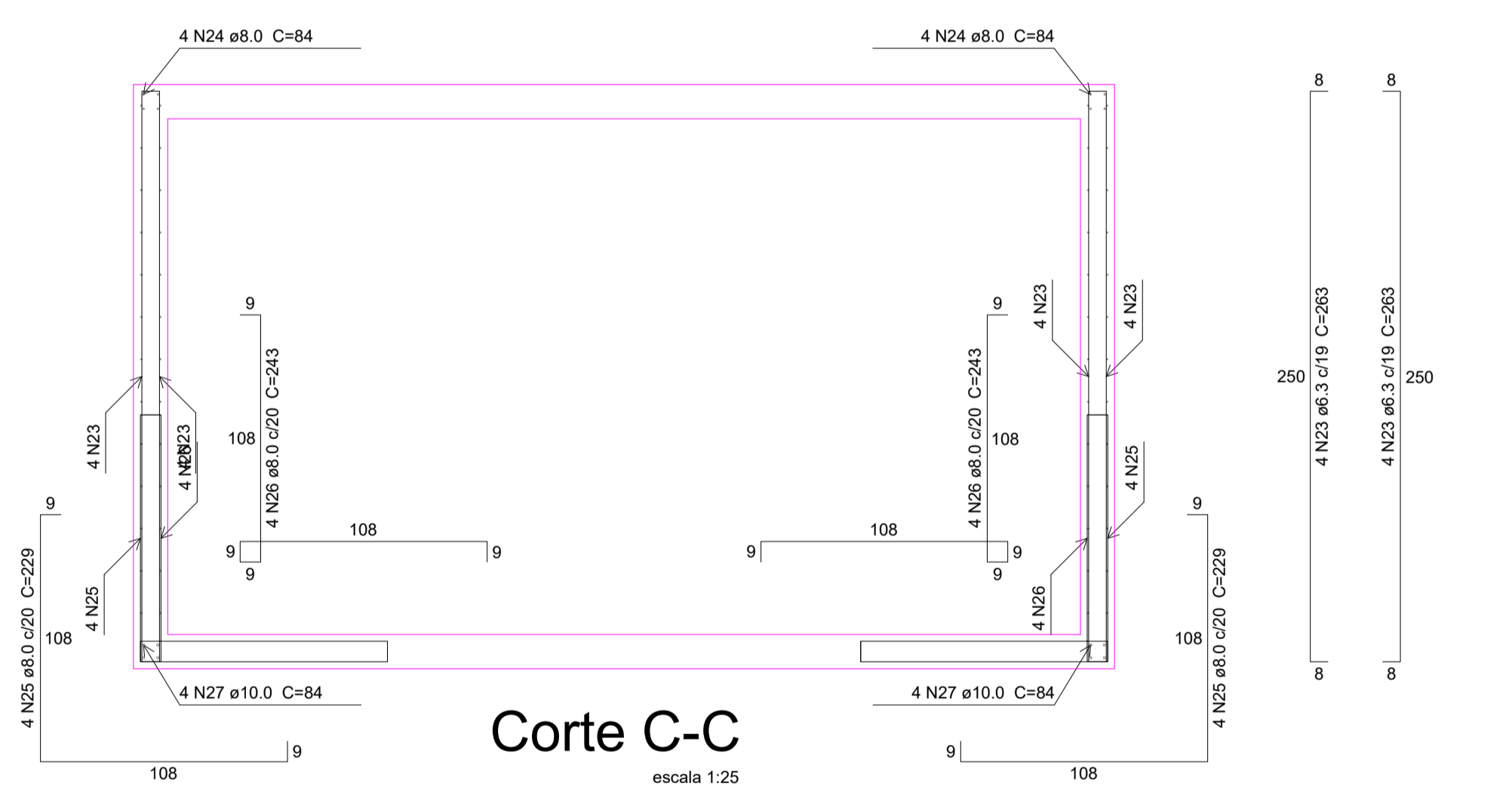
Corte A-A

escala 1:25



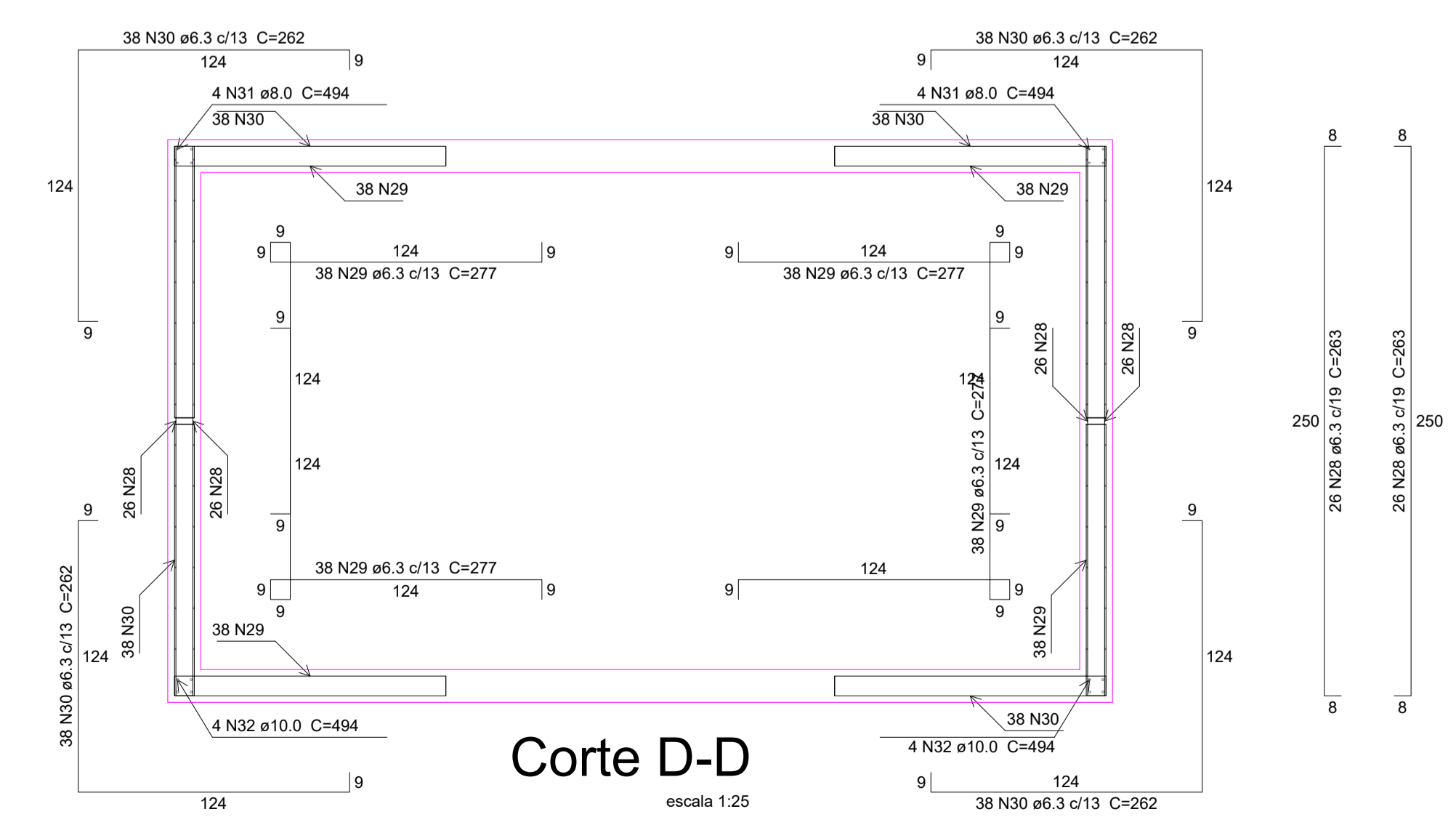
Corte B-B

escala 1:25



Corte C-C

escala 1:25



Corte D-D

escala 1:25

CÁLCULO ESTRUTURAL

PROPRIETÁRIO: PMS
 OBRA/LOCAL: ETE

PROJETO:

REVISÕES:	CONTEÚDO:	FRANCHA Nº
-	DETALHES ETE	02/12
-		
-		
-		
-		

DATA: FEV/2013