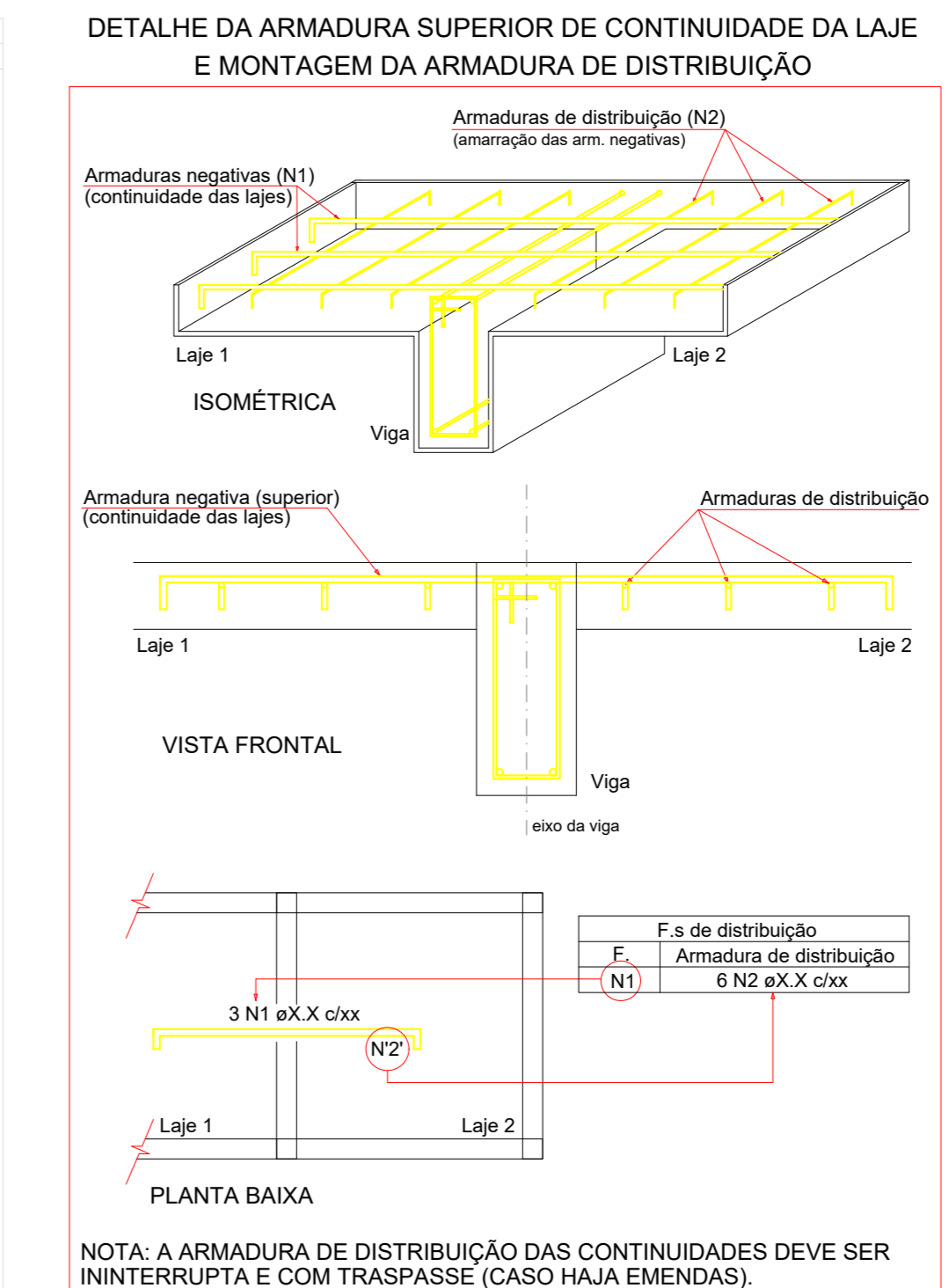


Armaduras de distribuição

Armadura	N	DIAM	C	UNIT	C.TOTAL
N1	8 N2	45.0	C=308		
N3	5 N4	45.0	C=228		
N5	5 N6	45.0	C=220		
N6	13 N7	45.0	C=140		
N8	8 N9	45.0	C=80		
N9	4 N10	45.0	C=413		
N11	5 N12	45.0	C=600		
N13	5 N14	45.0	C=400		
N15	5 N16	45.0	C=400		
N17	6 N18	45.0	C=268		
N19	8 N20	45.0	C=268		
N23	5 N24	45.0	C=400		
N25	5 N26	45.0	C=400		
N27	8 N28	45.0	C=177		
N29	9 N30	45.0	C=177		
N32	8 N33	45.0	C=135		
N34	7 N35	45.0	C=80		
N36	4 N37	45.0	C=268		
N38	5 N39	45.0	C=268		
N40	14 N41	45.0	C=135		
N42	8 N43	45.0	C=320		
N44	7 N45	45.0	C=135		
N46	8 N47	45.0	C=135		
N48	10 N49	45.0	C=135		
N50	10 N51	45.0	C=135		
N52	7 N53	45.0	C=135		
N54	10 N55	45.0	C=135		
N56	10 N57	45.0	C=135		
N58	10 N59	45.0	C=135		
N60	10 N61	45.0	C=135		
N62	10 N63	45.0	C=135		
N64	10 N65	45.0	C=135		
N66	10 N67	45.0	C=135		
N68	10 N69	45.0	C=135		
N70	10 N71	45.0	C=135		
N72	10 N73	45.0	C=135		
N74	10 N75	45.0	C=135		
N76	10 N77	45.0	C=135		
N78	10 N79	45.0	C=135		
N80	10 N81	45.0	C=135		
N82	10 N83	45.0	C=135		
N84	10 N85	45.0	C=135		
N86	10 N87	45.0	C=135		
N88	10 N89	45.0	C=135		
N90	10 N91	45.0	C=135		
N92	10 N92	45.0	C=135		



ELEMENTO	AÇO	N	DIAM	QUANT	C.UNIT	C.TOTAL
Negativo Y	CAO	1	5.0	29	148	4292
	CAO	2	5.0	8	398	3184
	CAO	3	5.0	30	101	3030
	CAO	4	5.0	5	228	1140
	CAO	5	5.0	21	320	6720
	CAO	6	5.0	27	255	6885
	CAO	7	5.0	13	140	1820
	CAO	8	5.0	6	150	900
	CAO	9	5.0	132	80	10560
	CAO	10	5.0	20	413	8260
	CAO	11	5.0	113	85	9605
	CAO	12	5.0	25	600	15000
	CAO	13	5.0	23	86	2024
	CAO	14	5.0	22	600	8000
	CAO	15	5.0	24	96	2304
	CAO	16	5.0	5	458	2290
	CAO	17	5.0	33	115	3795
	CAO	18	5.0	6	628	3768
	CAO	19	5.0	11	145	1595
	CAO	20	5.0	40	160	6400
	CAO	21	5.0	9	560	5040
	CAO	22	5.0	9	VAR	VAR
	CAO	23	5.0	8	448	3584
	CAO	24	5.0	18	78	1404
	CAO	25	5.0	71	84	5964
	CAO	26	5.0	5	238	1190
	CAO	27	5.0	57	109	6213
	CAO	28	5.0	9	286	2394
	CAO	29	5.0	7	840	4480
	CAO	30	5.0	18	155	2790
	CAO	31	5.0	7	136	1504
	CAO	32	5.0	7	152	1064
	CAO	33	5.0	7	135	1080
	CAO	34	5.0	114	136	15504
	CAO	35	5.0	7	680	4760
	CAO	36	5.0	10	17	170
	CAO	37	5.0	5	288	1340
	CAO	38	5.0	14	128	1792
	CAO	39	5.0	10	47	470
	CAO	40	5.0	7	67	469
	CAO	41	5.0	29	120	3480
	CAO	42	5.0	5	147	735
	CAO	43	5.0	68	138	10764
	CAO	44	5.0	4	168	672
	CAO	45	5.0	9	40	360
	CAO	46	5.0	6	134	804
	CAO	47	5.0	2	183	366
	CAO	48	5.0	37	103	3811
	CAO	49	5.0	5	649	3245
	CAO	50	5.0	71	84	6074
	CAO	51	5.0	5	638	3190
	CAO	52	5.0	6	480	2880
	CAO	53	5.0	4	240	960
	CAO	54	5.0	17	408	6936
	CAO	55	5.0	9	287	2403
	CAO	56	5.0	8	340	2720
	CAO	57	5.0	29	305	8845
	CAO	58	5.0	8	243	1944
	CAO	59	5.0	7	379	2653
	CAO	60	5.0	26	191	4966
	CAO	61	5.0	11	124	1240
	CAO	62	5.0	10	124	1240
	CAO	63	5.0	4	283	1132
	CAO	64	5.0	5	172	860
	CAO	65	5.0	6	130	780
	CAO	66	5.3	26	146	3796
	CAO	67	5.3	8	142	1136
	CAO	68	5.3	3	189	567
	CAO	69	5.3	60	71	4260
	CAO	70	5.3	4	185	740
	CAO	71	5.3	3	189	567
	CAO	72	5.3	6	126	756
	CAO	73	5.3	10	44	440
	CAO	74	5.3	10	85	850
	CAO	75	5.3	47	95	4465
	CAO	76	5.3	26	105	2730
	CAO	77	5.3	11	140	1540
	CAO	78	5.3	24	340	8160
	CAO	79	5.3	30	180	5400
	CAO	80	5.3	15	580	8700
	CAO	81	5.3	8	221	1768
	CAO	82	5.3	12	153	1836
	CAO	83	5.3	19	134	2546
	CAO	84	5.3	10	504	5040
	CAO	85	5.3	6	380	2280
	CAO	86	5.3	8	454	3632
	CAO	87	5.3	11	214	2354
	CAO	88	5.3	22	79	1738
	CAO	89	5.3	6	201	1206
	CAO	90	5.3	9	86	774
	CAO	91	5.3	8	174	1392
	CAO	92	5.3	6	109	654
	CAO	93	5.3	8	88	5544
	CAO	94	5.3	7	272	1904
	CAO	95	5.3	3	115	345
	CAO	96	5.3	19	148	2812
	CAO	97	5.3	20	114	2280
	CAO	98	5.3	8	307	2456
	CAO	99	5.3	8	160	1280
	CAO	100	5.3	4	182	728
	CAO	101	10.0	48	150	7200
	CAO	102	10.0	8	VAR	VAR
	CAO	103	10.0	14	88	1248

Resumo do aço

AÇO	DIAM	C.TOTAL	PESO
CAO	6.3	807.2	197.5
CAO	8.0	178.3	74.4
CAO	10.0	83.5	57.6
CAO	5.0	2409.9	371.4
PESO TOTAL			
CAO	325.5		
CAO	371.4		

Armação negativa das lajes do pavimento COBERTA (Eixo Y) escala 1:50

A & V PROJETOS DE ENGENHARIA

PROJETO: PROJETO ESTRUTURAL HOSPITAL DR ESTEVAM

INTERESSADO: PREFEITURA DE SOBRAL

ENDEREÇO: -

MUNICÍPIO: SOBRAL-CE

DATA: 04/10/2022 | REVISÃO: 00 | ARQUIVO

EST 42