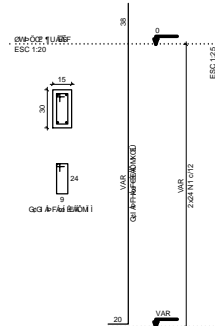


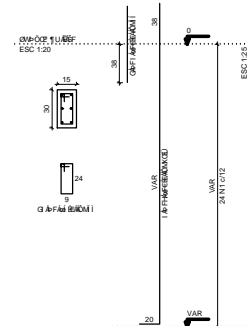
S10=S11=S24=S42=S43  
PLANTA  
ESC 1:25

CORTE  
ESC 1:25

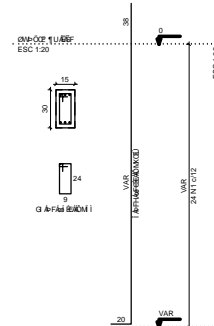
P10=P24



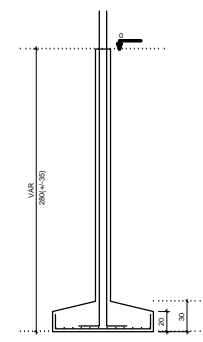
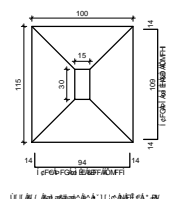
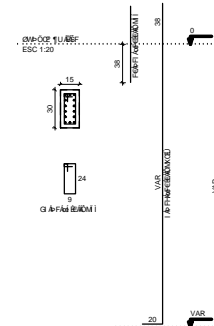
P11



P42

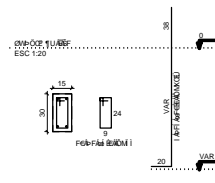


P43

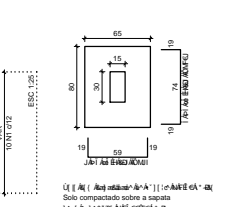


P17=P25=P26=P27

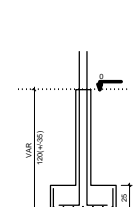
P13=P14



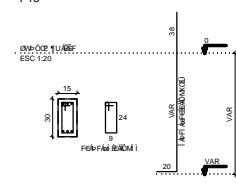
S13=S14  
PLANTA  
ESC 1:25



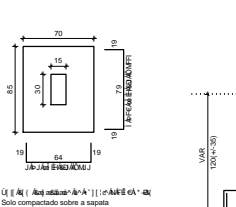
CORTE  
ESC 1:25



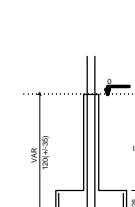
P15



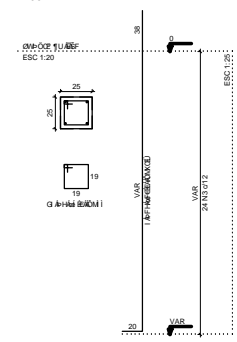
S15  
PLANTA  
ESC 1:25



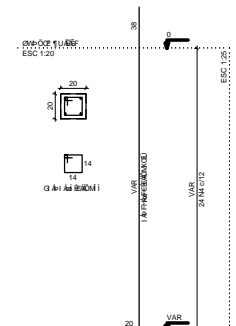
CORTE  
ESC 1:25



P56

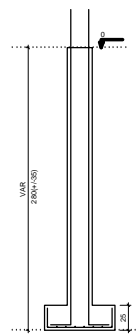
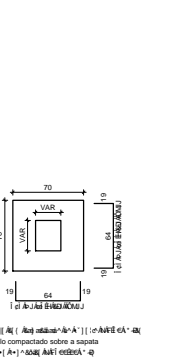


P60

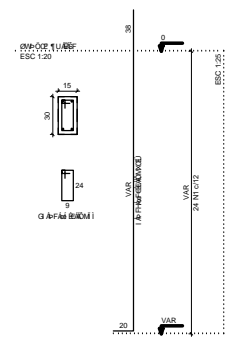


S17=S25=S26=S27=S56=S60  
PLANTA  
ESC 1:25

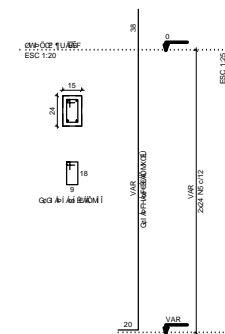
CORTE  
ESC 1:25



P18

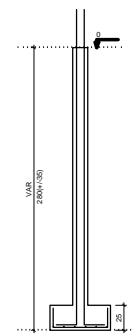
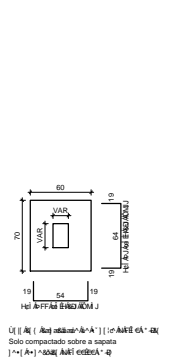


P19=P20



S18=S19=S20  
PLANTA  
ESC 1:25

CORTE  
ESC 1:25




Quantidade de Sapatas

Q.U	N	DIAM	D	UNIT	C.TOTAL
CASO	1	5.0	174	74	13072
	2	5.0	96	98	9408
	3	5.0	24	88	2112
	4	5.0	24	68	1632
	5	5.0	48	86	3168
	6	6.3	60	134	8540
	7	6.3	18	94	1692
	8	6.3	14	109	1526
	9	6.3	123	99	12177
	10	6.3	8	114	912
	11	6.3	24	89	2136
	12	8.0	50	118	5900
	13	10.0	58	VAR	VAR
	14	10.0	12	75	900
	15	10.0	14	VAR	VAR

Q.U	DIAM	C.TOTAL	PESO
CASO	6.3	264.9	64.8
	8.0	59	23.3
	10.0	226.6	149.9
	5.0	290	46.1
CASO	229	1	1
CASO	46.1	1	1

XI (XII) (XIII) (XIV) (XV) (XVI) (XVII) (XVIII) (XIX) (XX) (XXI) (XXII) (XXIII) (XXIV) (XXV) (XXVI) (XXVII) (XXVIII) (XXIX) (XXX)

TITULO			
CSF DE TAPERUBA, DISTRITO DO MUNICIPIO DE SOBRAL/CE			
PROJETO			
ESTRUTURAL - SAPATAS			
ENDENÇO :			
RUA EUFRAZINO BASTO, S/N, TAPERUBA - CE			
PROPRIETARIO			
PREFEITURA MUNICIPAL DE SOBRAL			
AUTOR DO PROJETO			
CARLOS EDUARDO BRATZ			
RESPONSÁVEL TÉCNICO			
CARLOS EDUARDO BRATZ			
CONTEUDO			
- PLANTA DE SAPATAS			
			
<p>PREFEITURA MUNICIPAL DE SOBRAL Secretaria de Obras, Materiais e Serviços Públicos</p>	<p>DATA 09/05/2018</p>	<p>ESCALA INDICADA</p>	<p>DESENHO CARLOS</p>
OBS: IMPRIMIR EM FOLHA A1		<p>FOLHA 02/04</p>	