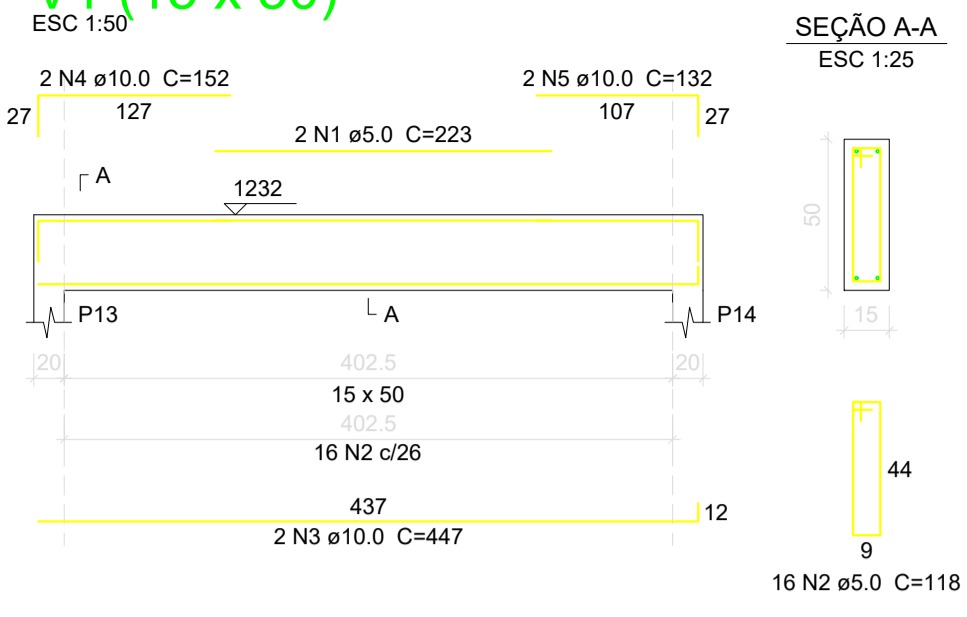
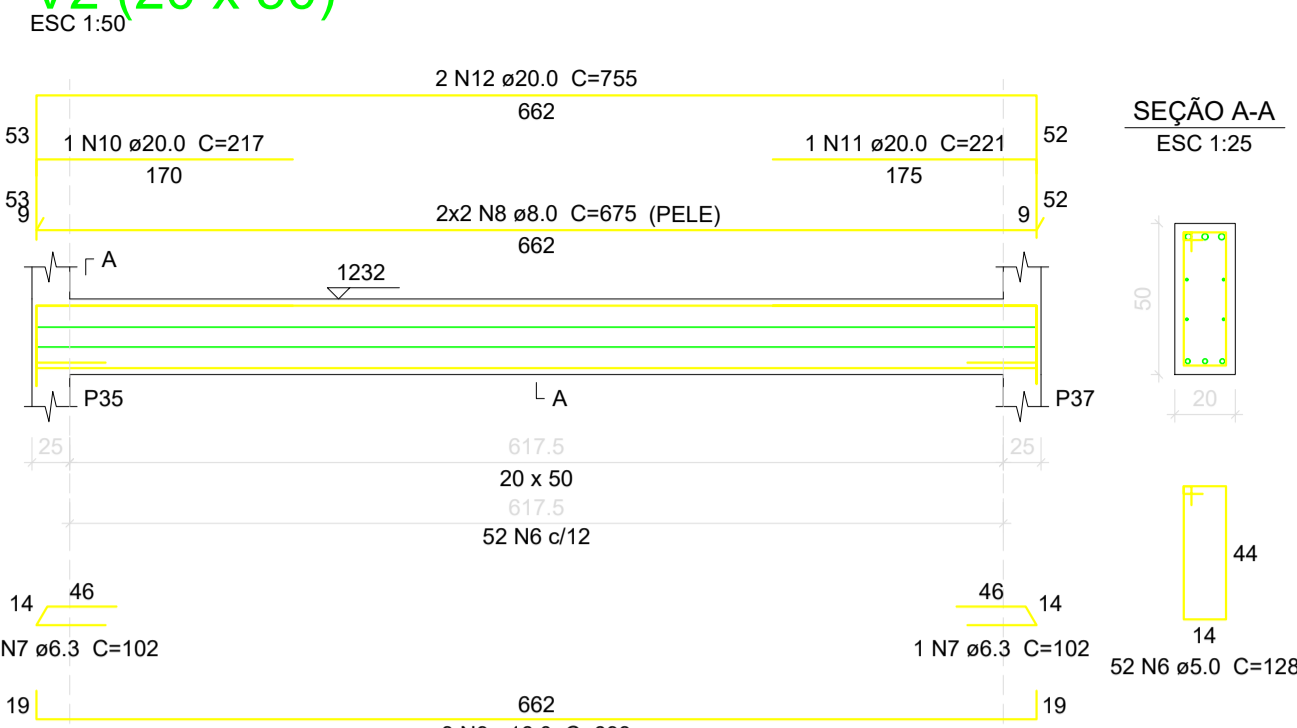


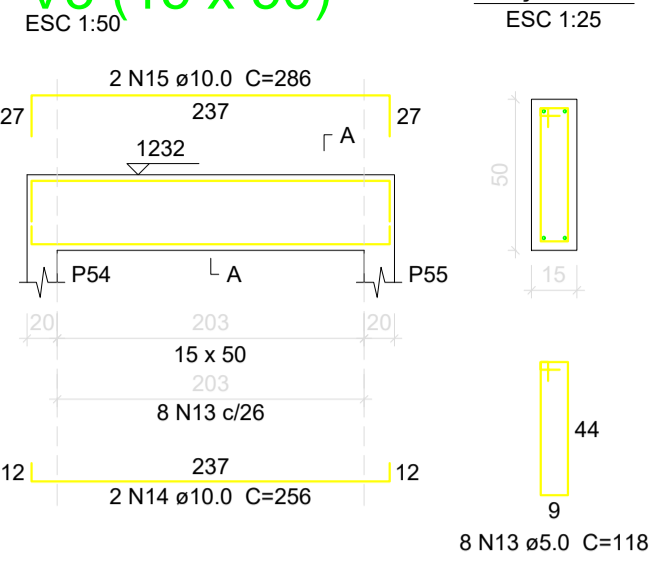
V1 (15 x 50)



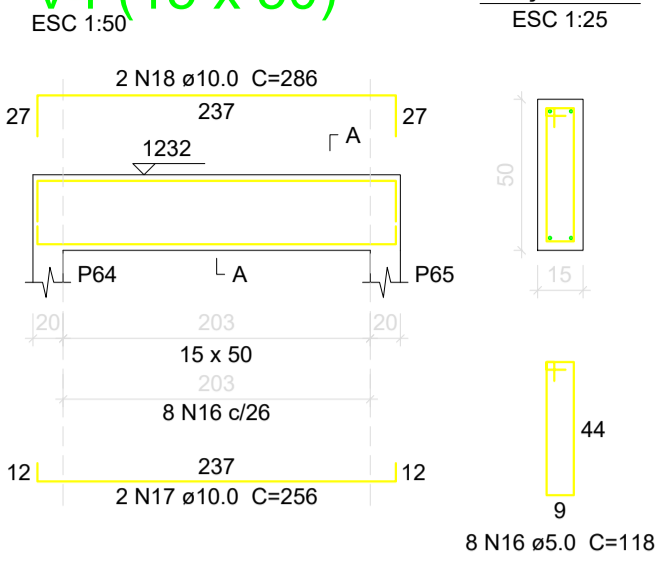
V2 (20 x 50)



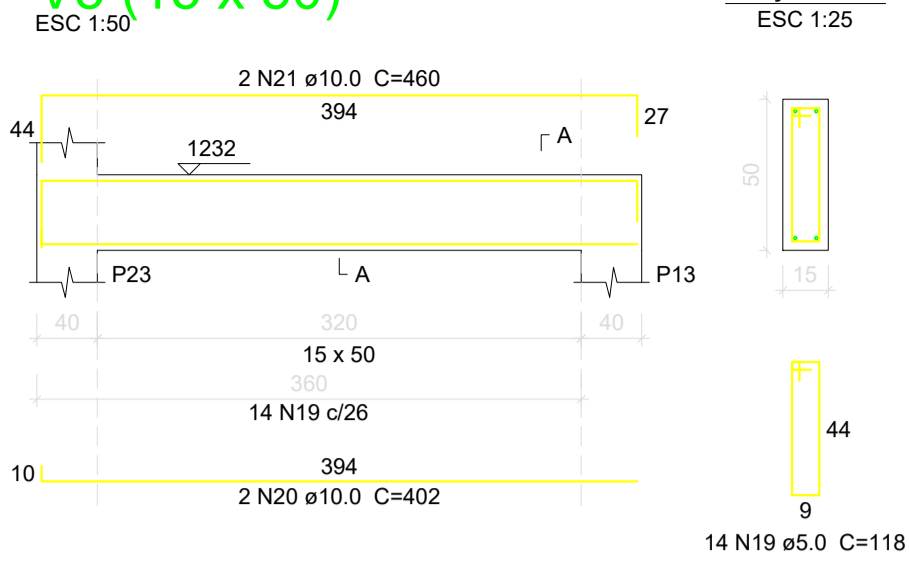
V3 (15 x 50)



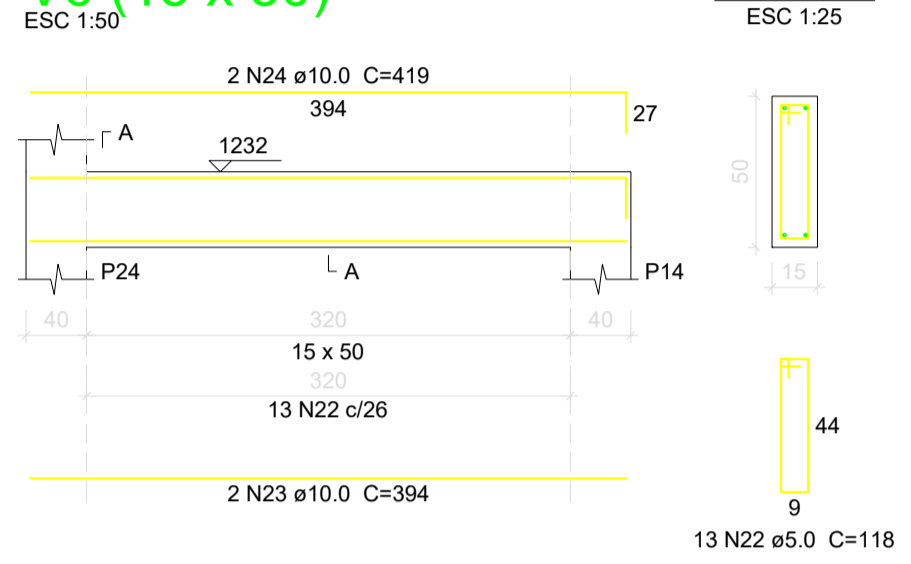
V4 (15 x 50)



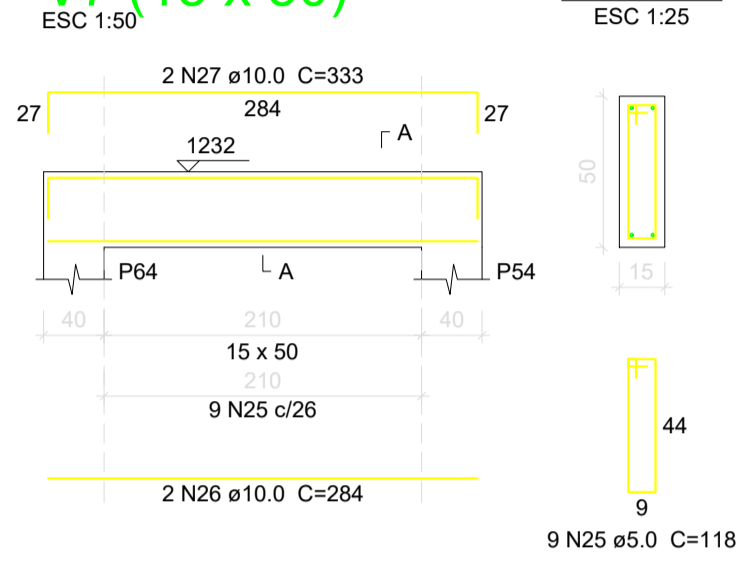
V5 (15 x 50)



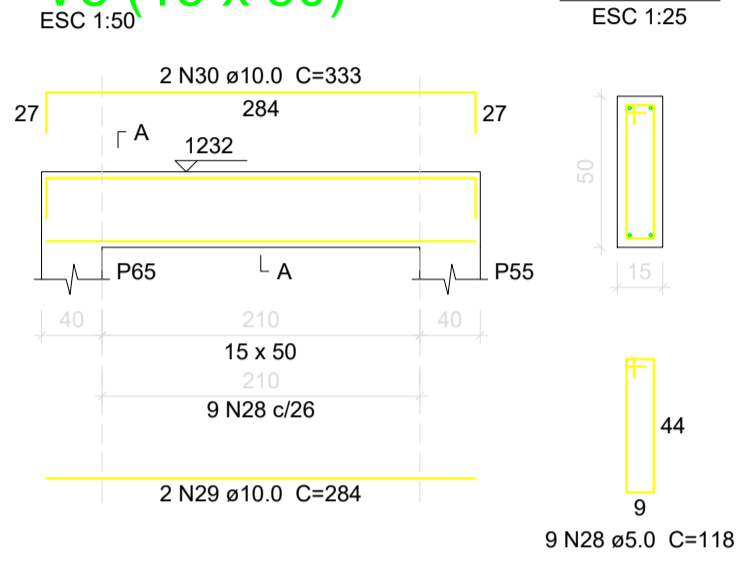
V6 (15 x 50)



V7 (15 x 50)



V8 (15 x 50)



Relação do aço

ELEMENTO	AÇO	N	DIAM (mm)	QUANT	C.UNIT (cm)	C.TOTAL (cm)
V1	CA60	1	5.0	2	223	446
	CA60	2	5.0	16	118	1888
	CA50	3	10.0	2	447	894
V2	CA50	4	10.0	2	152	304
	CA50	5	10.0	2	132	264
	CA60	6	5.0	52	128	6656
	CA50	7	6.3	2	102	204
	CA50	8	8.0	4	675	2700
V3	CA50	9	16.0	3	693	2079
	CA50	10	20.0	1	217	217
	CA50	11	20.0	1	221	221
	CA50	12	20.0	2	755	1510
	CA60	13	5.0	8	118	944
V4	CA50	14	10.0	2	256	512
	CA50	15	10.0	2	286	572
	CA60	16	5.0	8	118	944
V5	CA50	17	10.0	2	256	512
	CA50	18	10.0	2	286	572
	CA60	19	5.0	14	118	1652
V6	CA50	20	10.0	2	402	804
	CA50	21	10.0	2	460	920
	CA60	22	5.0	13	118	1534
V7	CA50	23	10.0	2	394	788
	CA50	24	10.0	2	419	838
	CA60	25	5.0	9	118	1062
V8	CA50	26	10.0	2	284	568
	CA50	27	10.0	2	333	666
	CA60	28	5.0	9	118	1062
V9	CA50	29	10.0	2	284	568
	CA50	30	10.0	2	333	666

Resumo do aço

AÇO	DIAM (mm)	C.TOTAL (m)	PESO (kg)
CA50	6.3	2.1	0.5
	8.0	27	10.7
	10.0	94.5	58.3
	16.0	20.8	32.8
CA60	20.0	19.5	48
	5.0	161.9	25
	PESO TOTAL (kg)		
CA50	150.3		
CA60	25		

Volume de concreto (C-25) = 2.4 m³
Área de forma = 34.56 m²

A & V PROJETOS DE ENGENHARIA

PROJETO: **PROJETO ESTRUTURAL HOSPITAL DR ESTEVAM**

INTERESSADO: **PREFEITURA DE SOBRAL**

ENDEREÇO: _____

MUNICÍPIO: **SOBRAL-CE**

DESENHOS DA PRANCHA	ESCALA
DET. VIGAS- FUNDO CAIXA	INDICADA
_____	_____
_____	_____
_____	_____