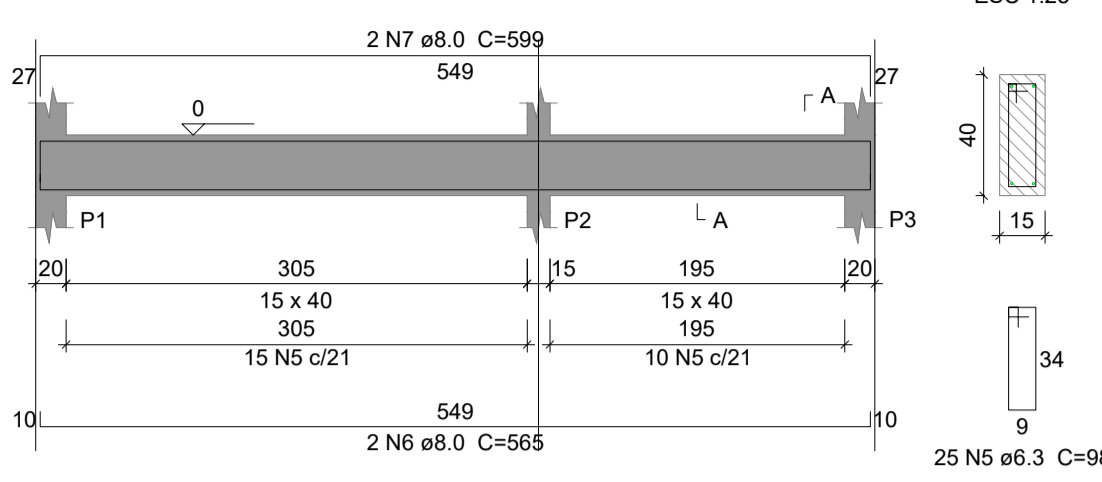
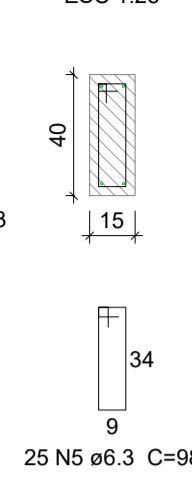


**V1**

ESC 1:50

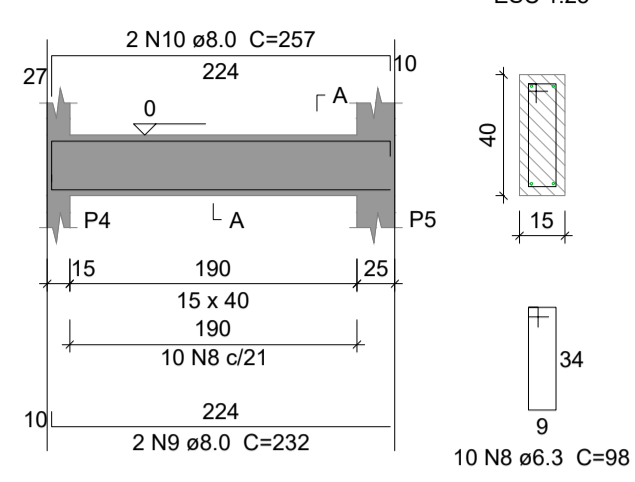


SEÇÃO A-A  
ESC 1:25

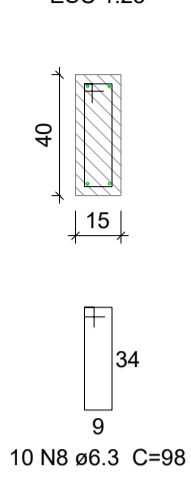


**V2**

ESC 1:50

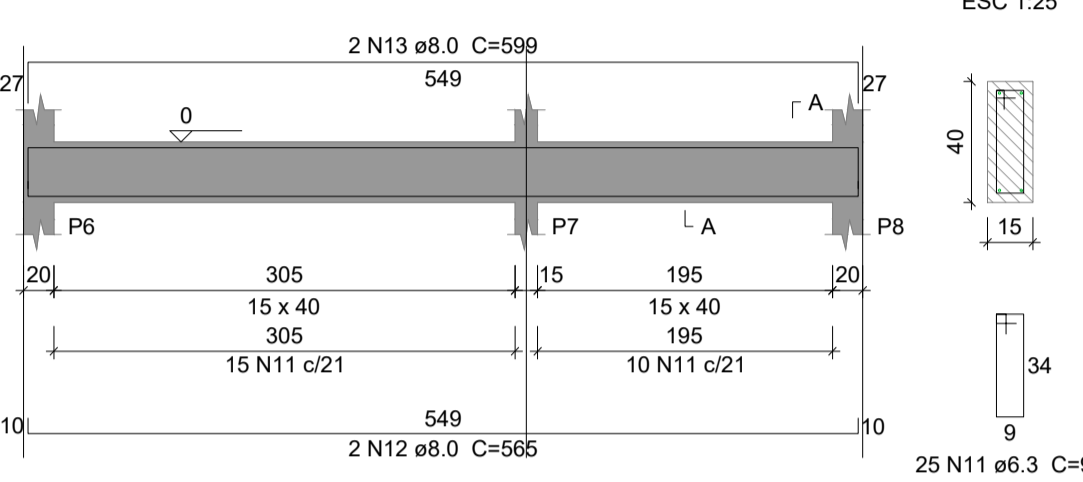


SEÇÃO A-A  
ESC 1:25

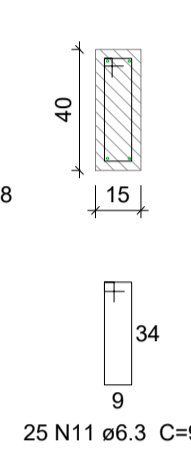


**V3**

ESC 1:50

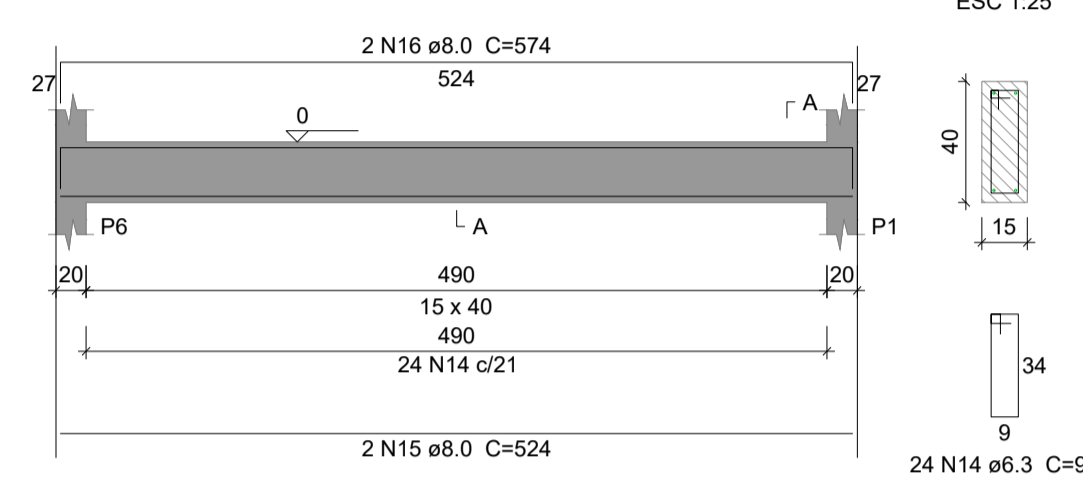


SEÇÃO A-A  
ESC 1:25

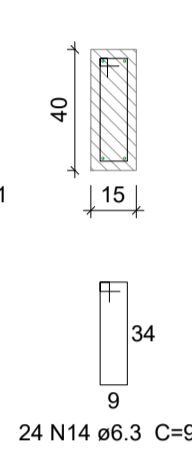


**V4**

ESC 1:50

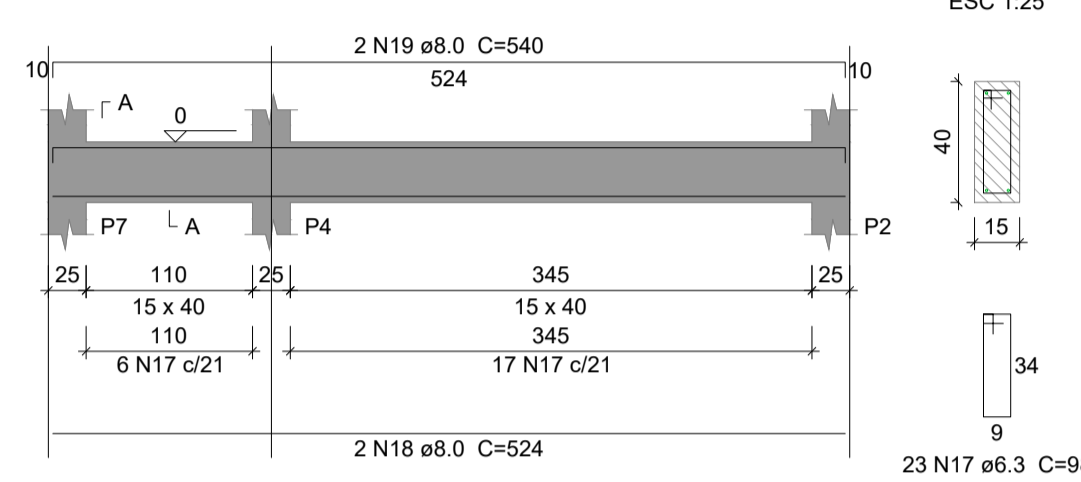


SEÇÃO A-A  
ESC 1:25

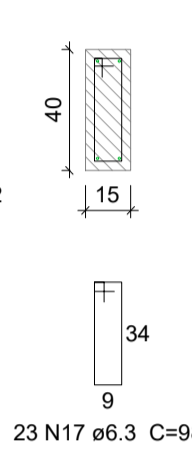


**V5**

ESC 1:50

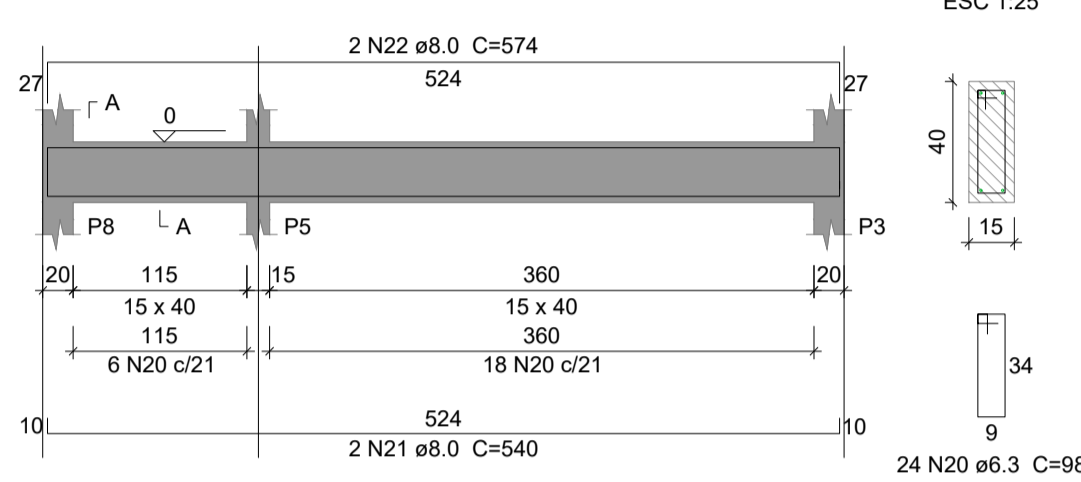


SEÇÃO A-A  
ESC 1:25

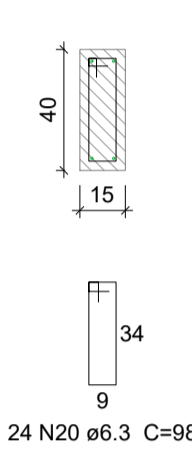


**V6**

ESC 1:50



SEÇÃO A-A  
ESC 1:25



**Relação do aço**

ELEMENTO	AÇO	N	DIAM (mm)	QUANT	C.UNIT (cm)	C.TOTAL (cm)
3xS4	CA50	1	6.3	30	104	3120
CA50	2	6.3	27	114	3078	
3xS6	CA50	3	6.3	48	99	4752
2xS8	CA50	4	6.3	34	98	3366
V1	CA50	5	6.3	25	98	2450
CA50	6	8.0	2	565	1130	
CA50	7	8.0	2	599	1198	
V2	CA50	8	6.3	10	98	980
CA50	9	8.0	2	232	464	
CA50	10	8.0	2	257	514	
V3	CA50	11	6.3	25	98	2450
CA50	12	8.0	2	565	1130	
CA50	13	8.0	2	599	1198	
V4	CA50	14	6.3	24	98	2352
CA50	15	8.0	2	524	1048	
CA50	16	8.0	2	574	1148	
V5	CA50	17	6.3	23	98	2254
CA50	18	8.0	2	524	1048	
CA50	19	8.0	2	540	1080	
V6	CA50	20	6.3	24	98	2352
CA50	21	8.0	2	540	1080	
CA50	22	8.0	2	574	1148	

**Resumo do aço**

AÇO	DIAM (mm)	C.TOTAL (m)	PESO (kg)
CA50	6.3	271.6	66.4
CA50	8.0	121.9	48.1
PESO TOTAL (kg)			
CA50	114.5		

Volume de concreto (C-25) = 2.78 m<sup>3</sup>  
Área de forma = 39.65 m<sup>2</sup>

**SAPATAS**  
S1=S2=S3 : 70 x 70 x 25 = 0,12m<sup>3</sup> x 03 = 0,36m<sup>3</sup>  
S2=S4=S5 : 85 x 75 x 25 = 0,16m<sup>3</sup> x 03 = 0,48m<sup>3</sup>  
S7=S8 : 70 x 70 x 25 = 0,12m<sup>3</sup> x 02 = 0,24m<sup>3</sup>  
1,08m<sup>3</sup>

**VIGAS BALDRAME**  
V1 : 540 x 15 x 40 = 0,32m<sup>3</sup>  
V2 : 215 x 15 x 40 = 0,13m<sup>3</sup>  
V3 : 540 x 15 x 40 = 0,32m<sup>3</sup>  
V4 : 515 x 15 x 40 = 0,31m<sup>3</sup>  
V5 : 515 x 15 x 40 = 0,31m<sup>3</sup>  
V6 : 515 x 15 x 40 = 0,31m<sup>3</sup>  
1,70m<sup>3</sup>

ESCALA DE PLANTA

1	1.00
2	0.50
3	0.30
4	0.20
5	0.20
6	0.20
7	0.20
8	0.10
9	0.09
10	0.30

OBS.: TODAS AS MEDIDAS DEVERÃO SER CONFERIDAS NO LOCAL

**SECRETARIA DA INFRAESTRUTURA**

PROJETO: **PROJETO ESTRUTURAL - CASA DO GERADOR SISTEMA DE ESGOTAMENTO SANITÁRIO - RAFAEL ARRUDA (1ª ETAPA)**

INTERESSADO: PREFEITURA DE SOBRAL  
AUTOR: AUGUSTO AZEVEDO FILHO

ENDEREÇO: \_\_\_\_\_  
MUNICÍPIO: SOBRAL

DESENHOS DA FRANCHA: DETALHE SAPATAS (ESCALA 1/50), DETALHE VIGAS BALDRAME (ESCALA 1/50)

DATA: AGOSTO/2020 | REVISÃO: 01 | ARQUIVO: \_\_\_\_\_ | EST: 02/05