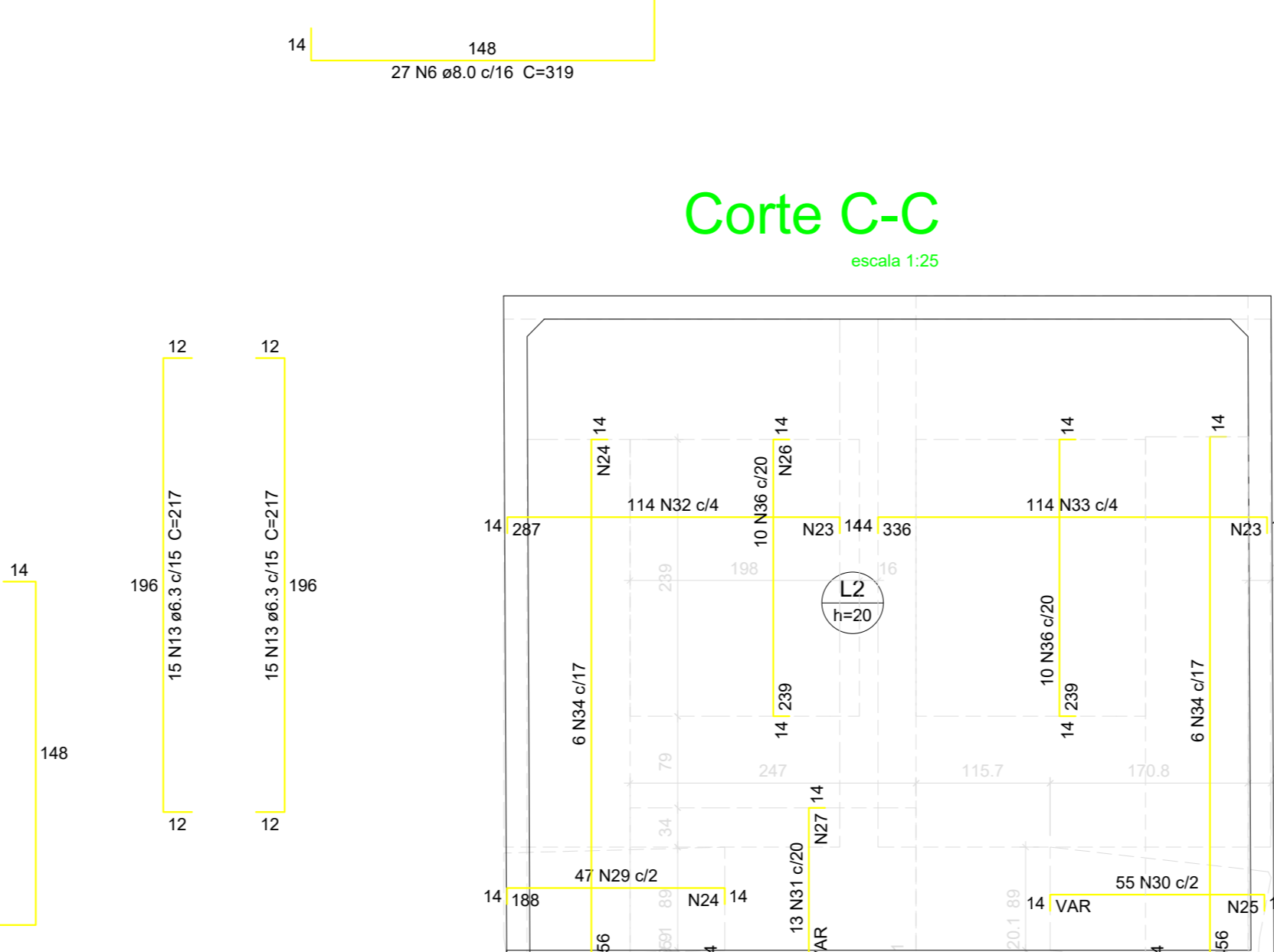
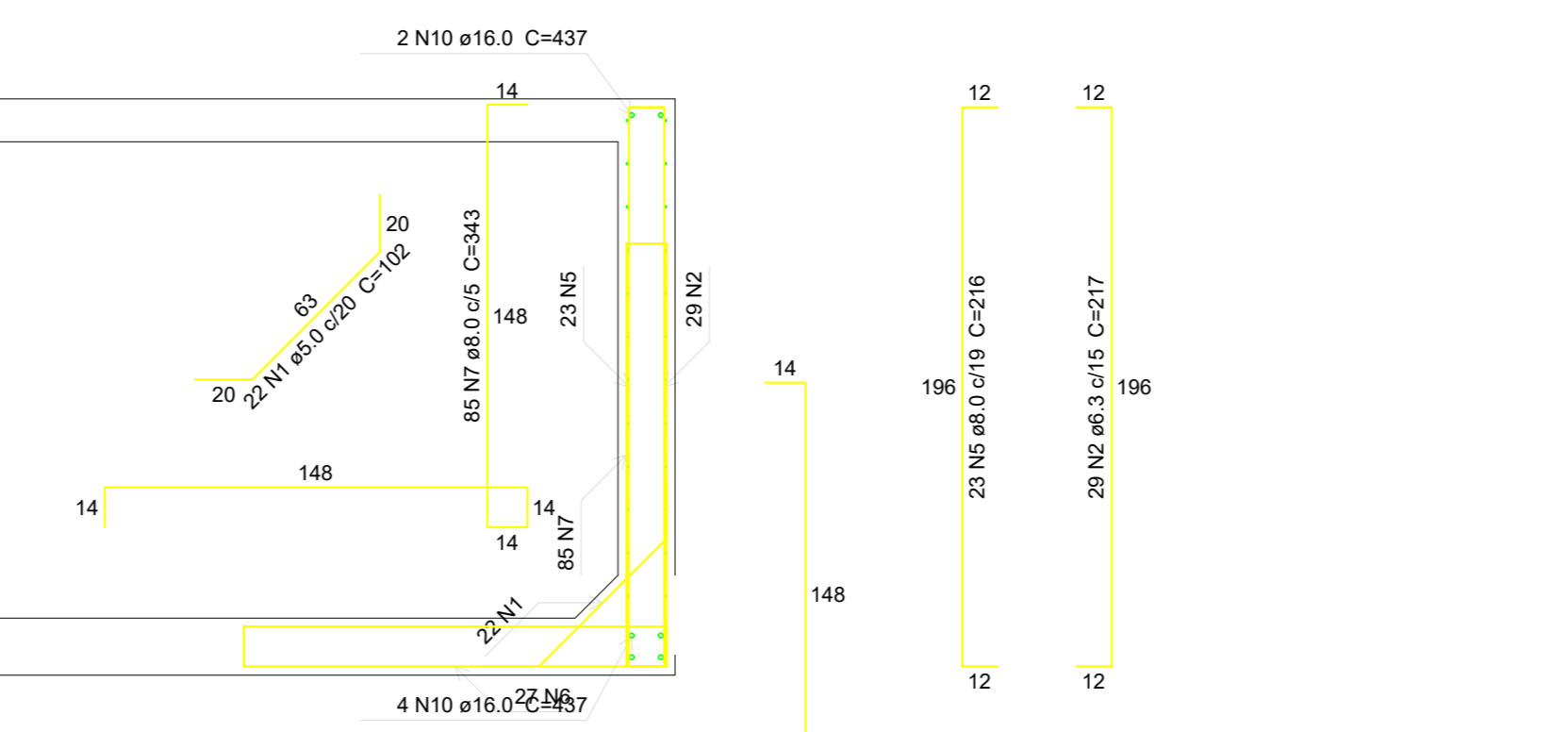
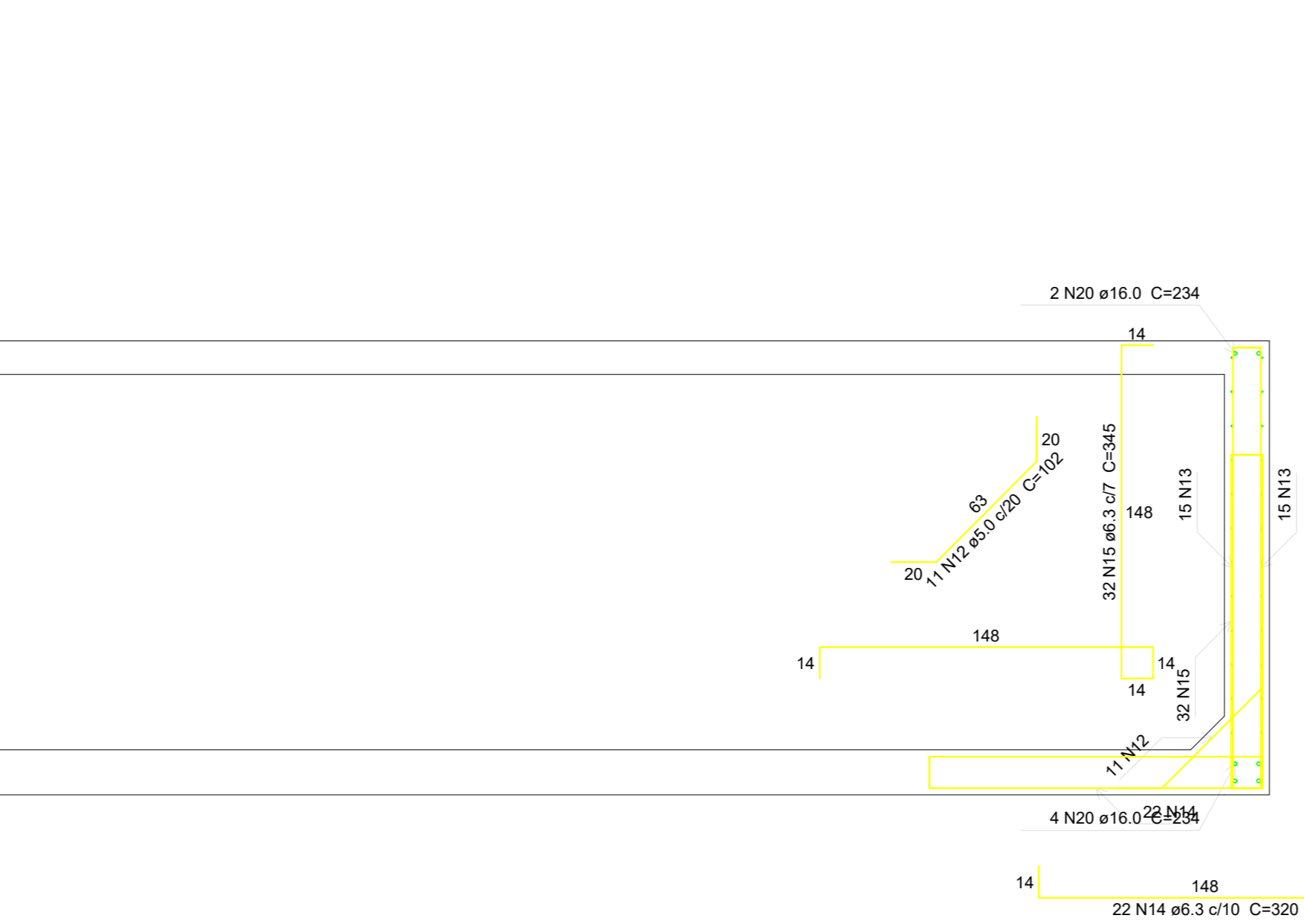
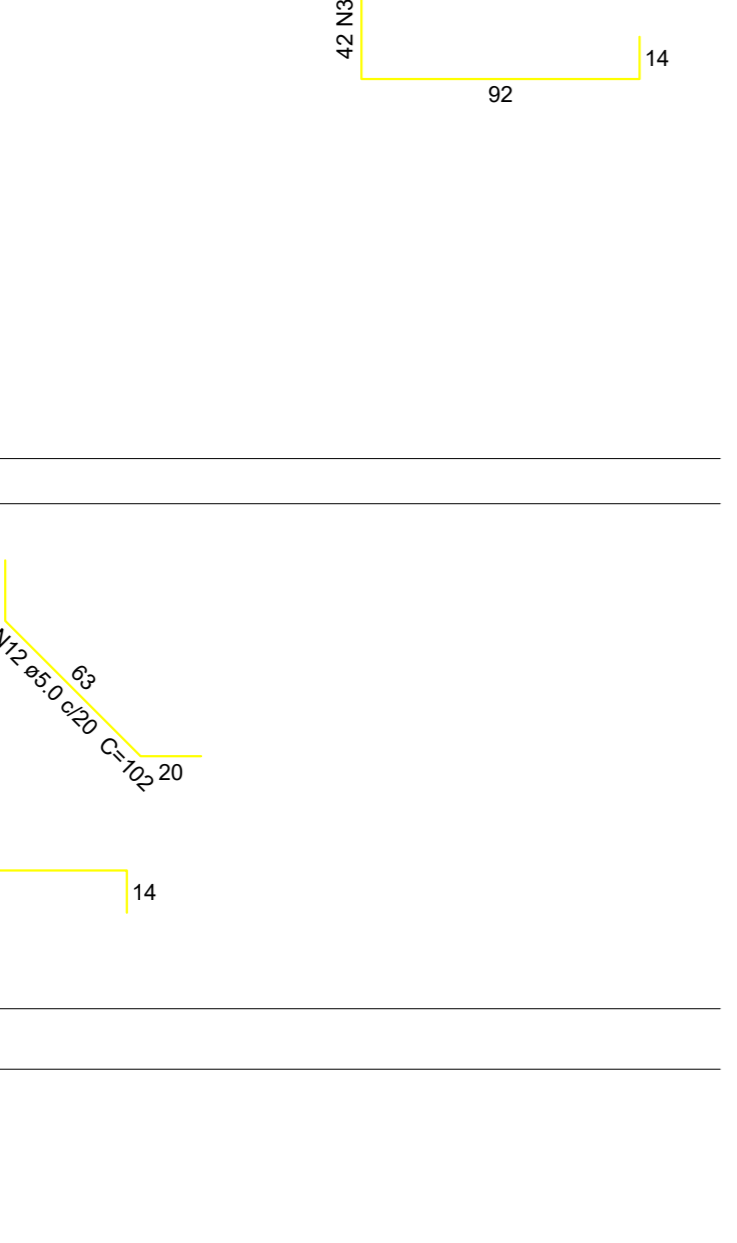
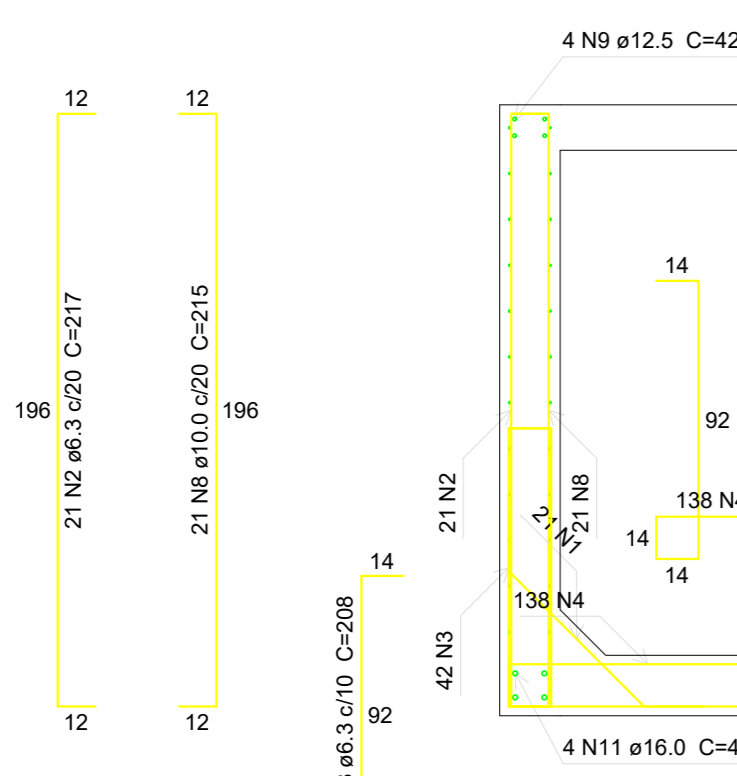
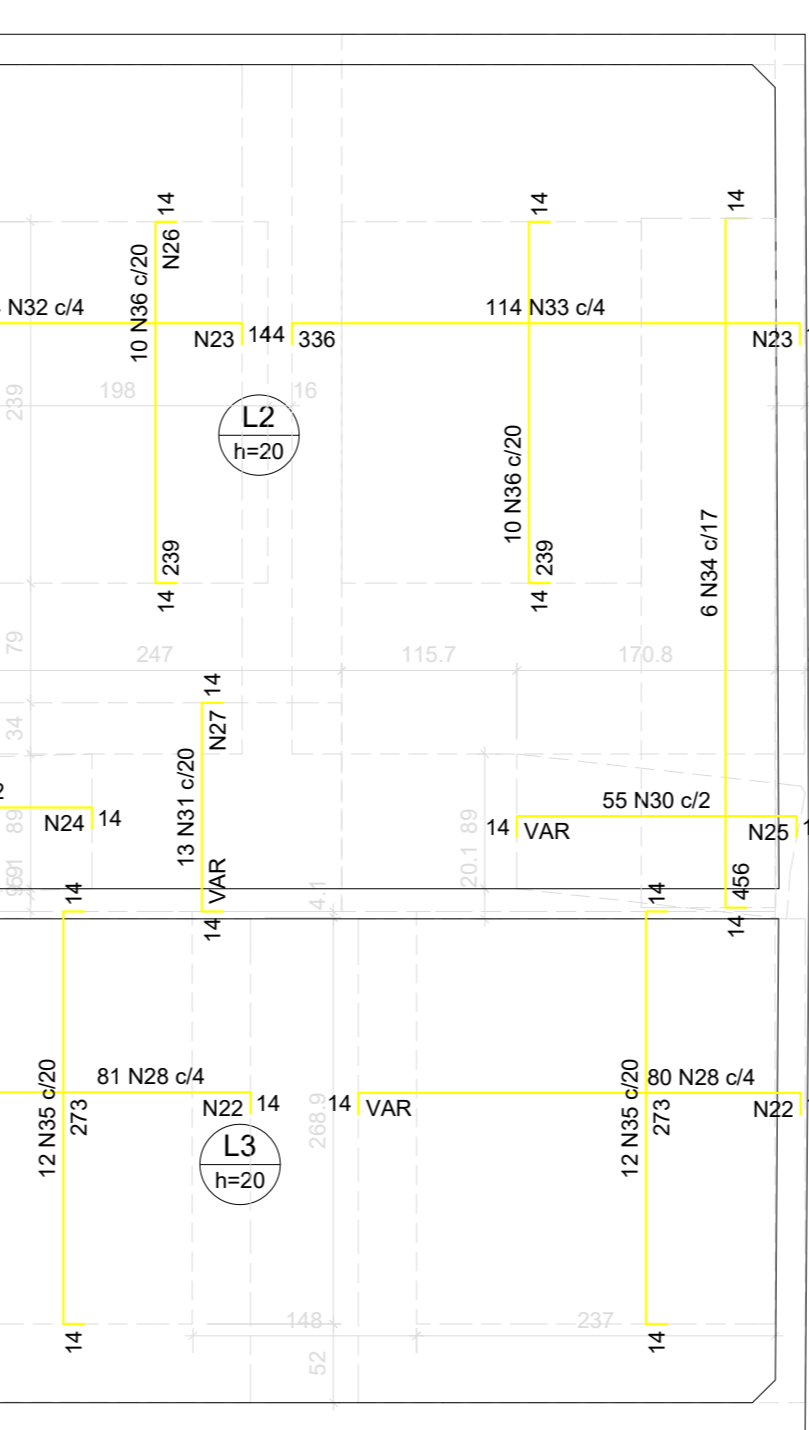


**Corte A-A** escala 1:25

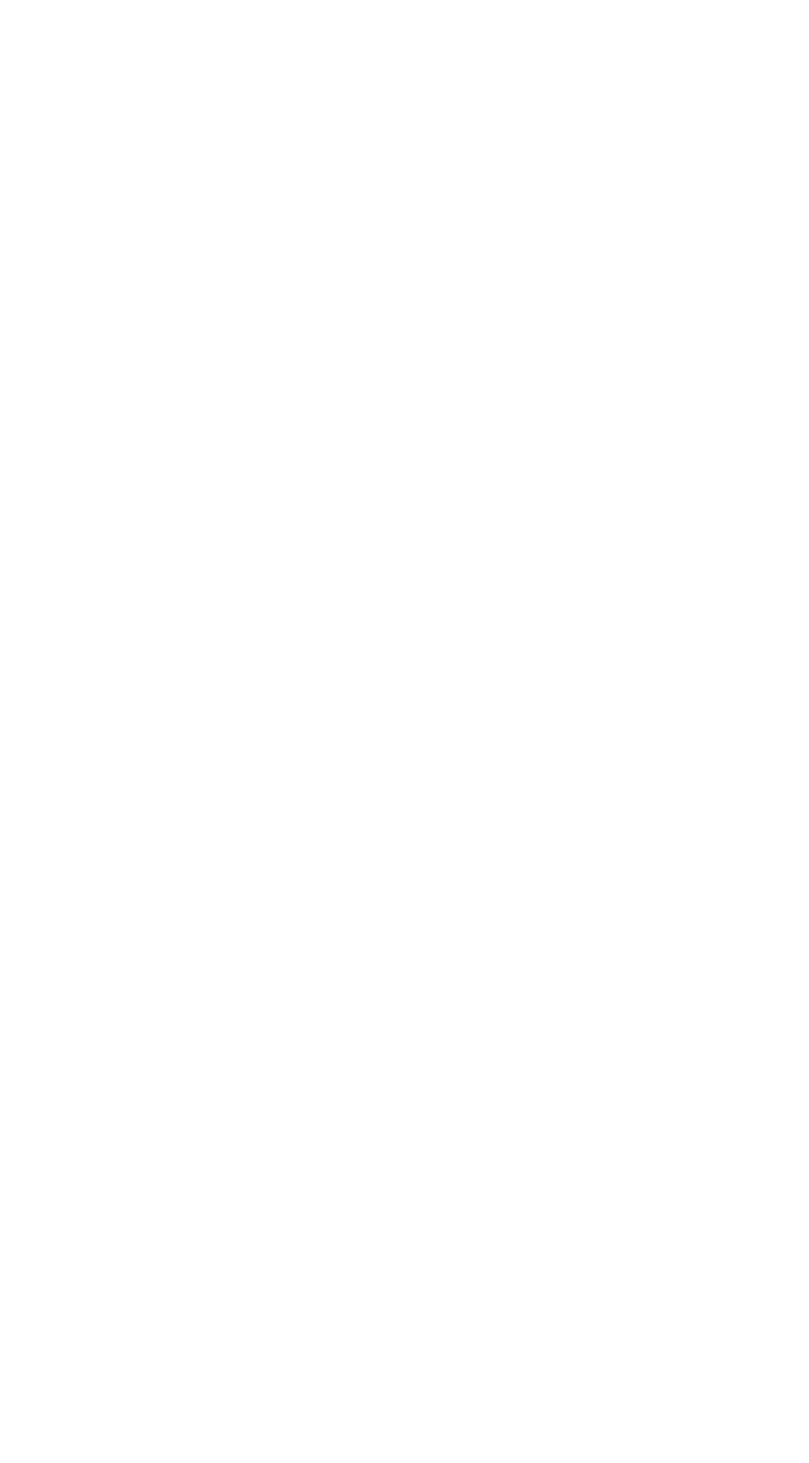
**Corte B-B** escala 1:25



**Corte C-C** escala 1:25



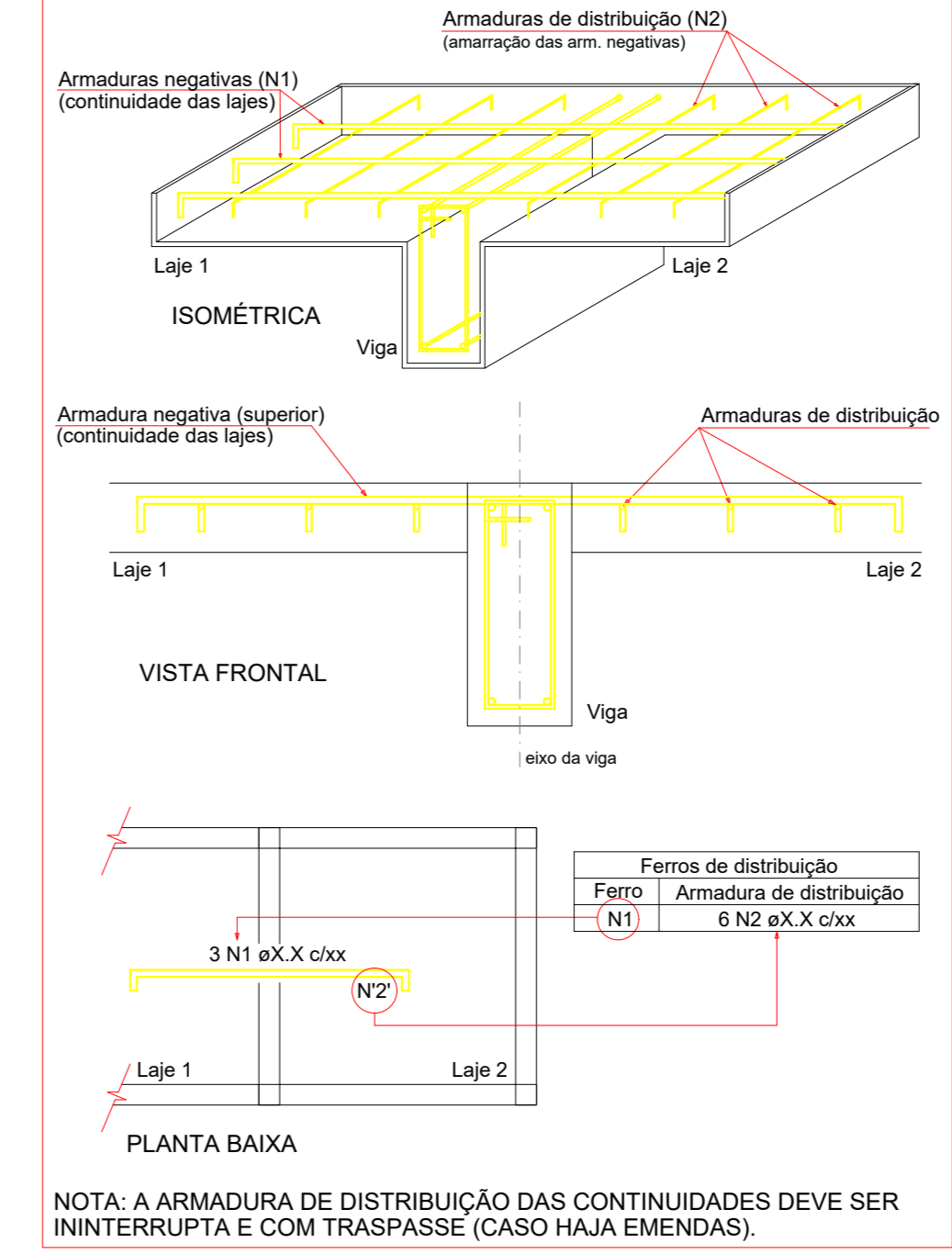
**Armação negativa das lajes (1232.0)** escala 1:50



Armaduras de distribuição

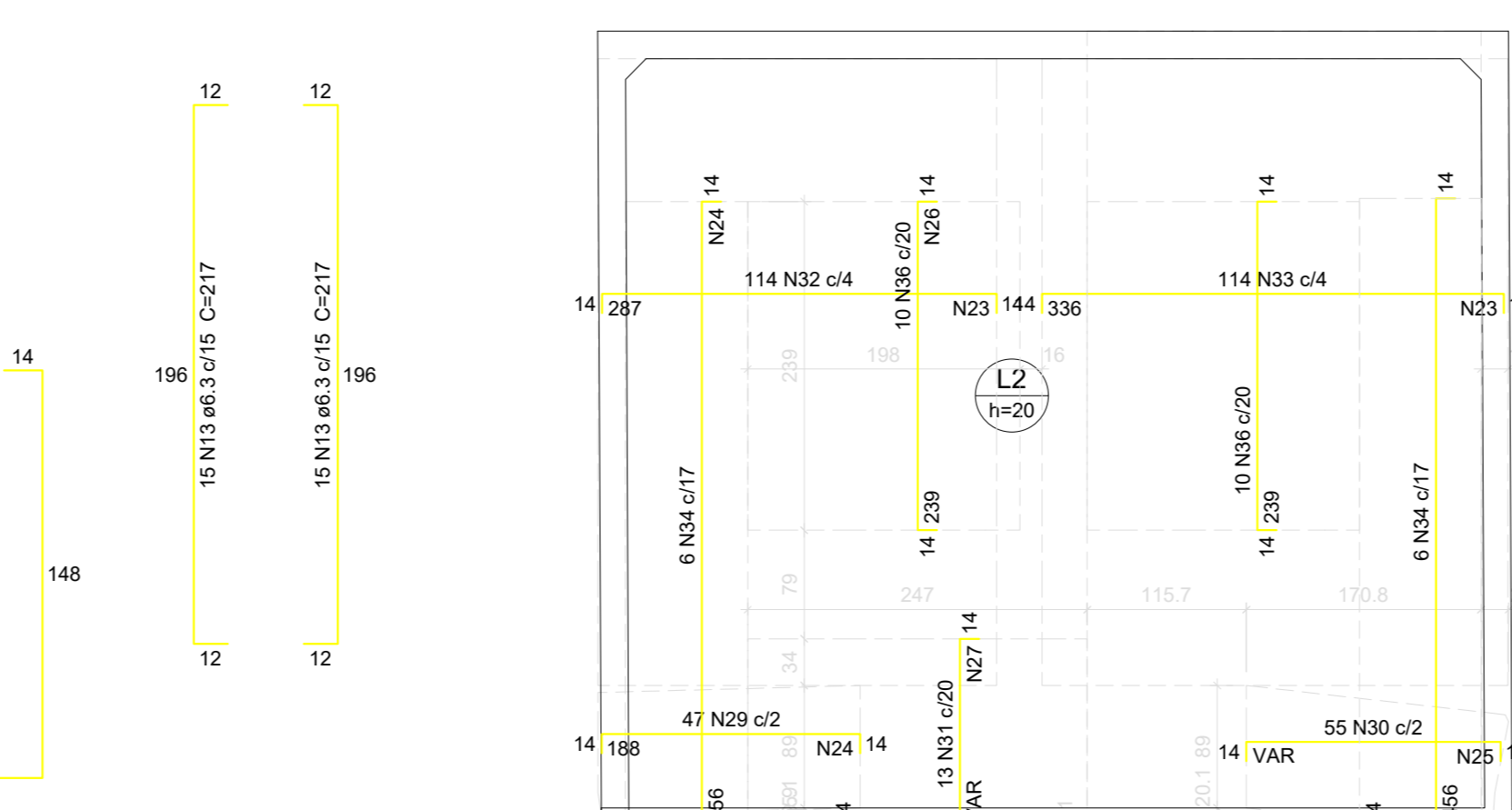
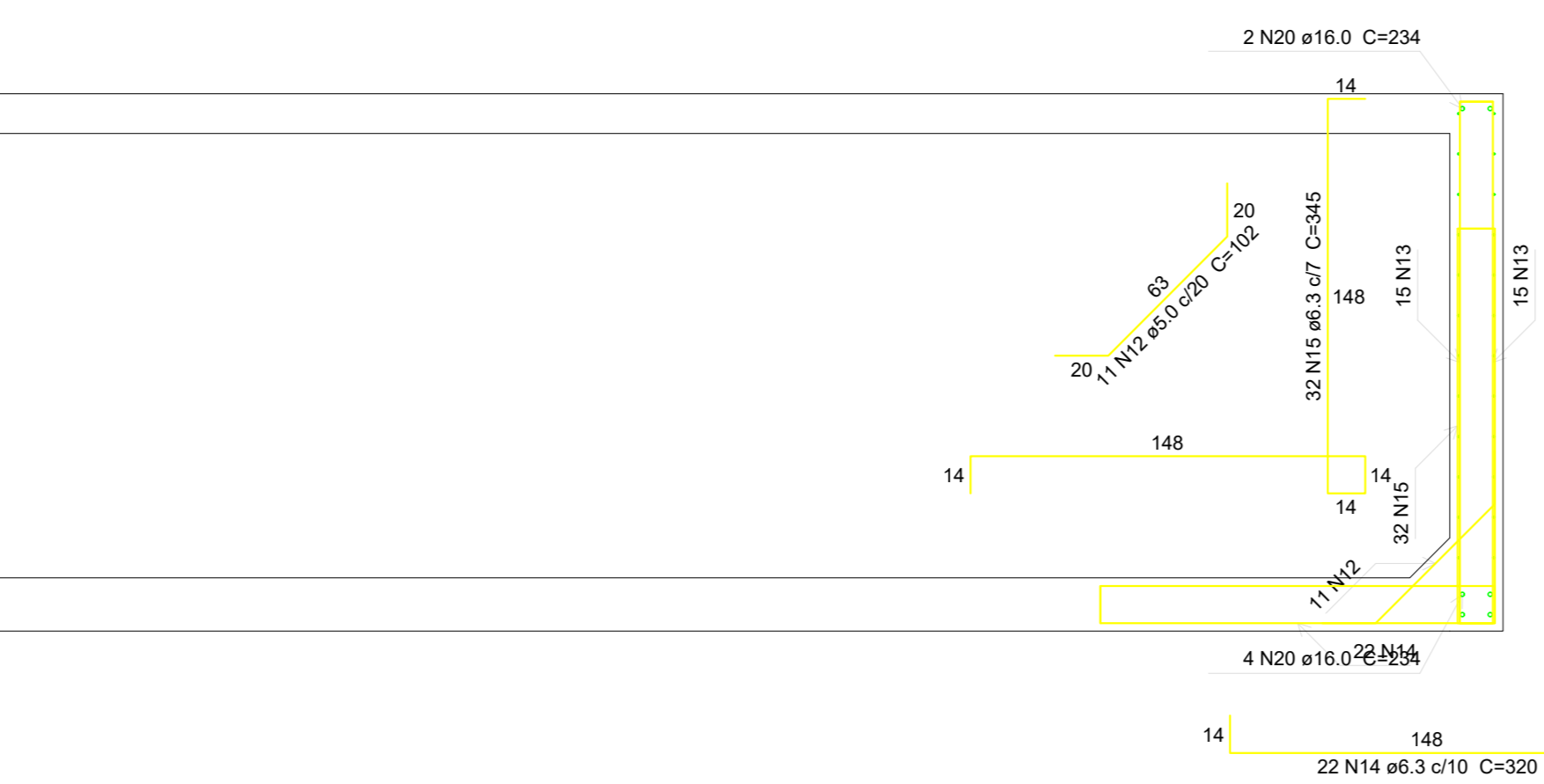
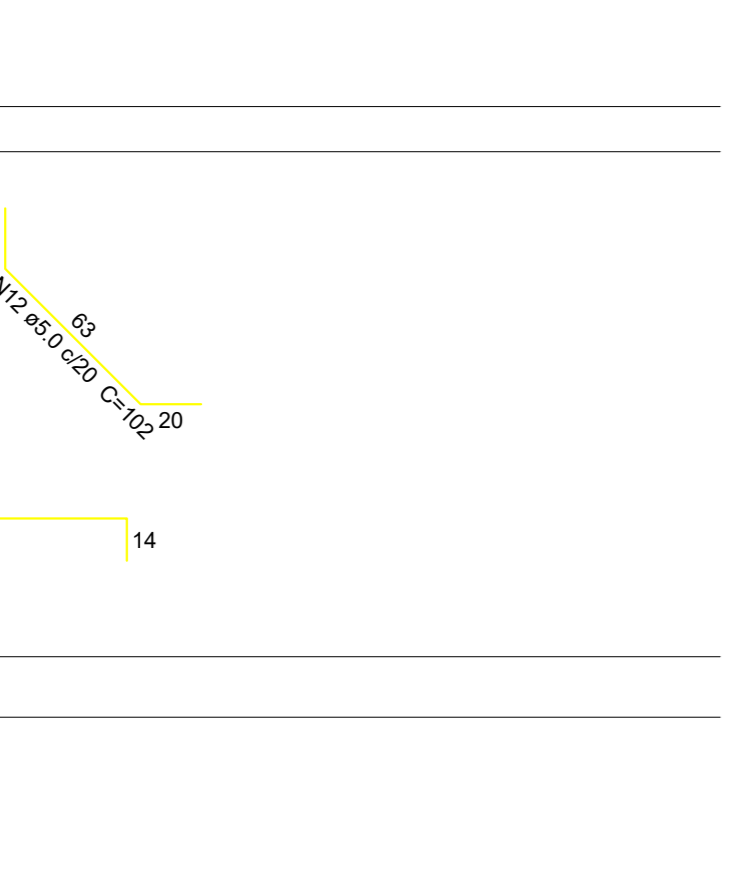
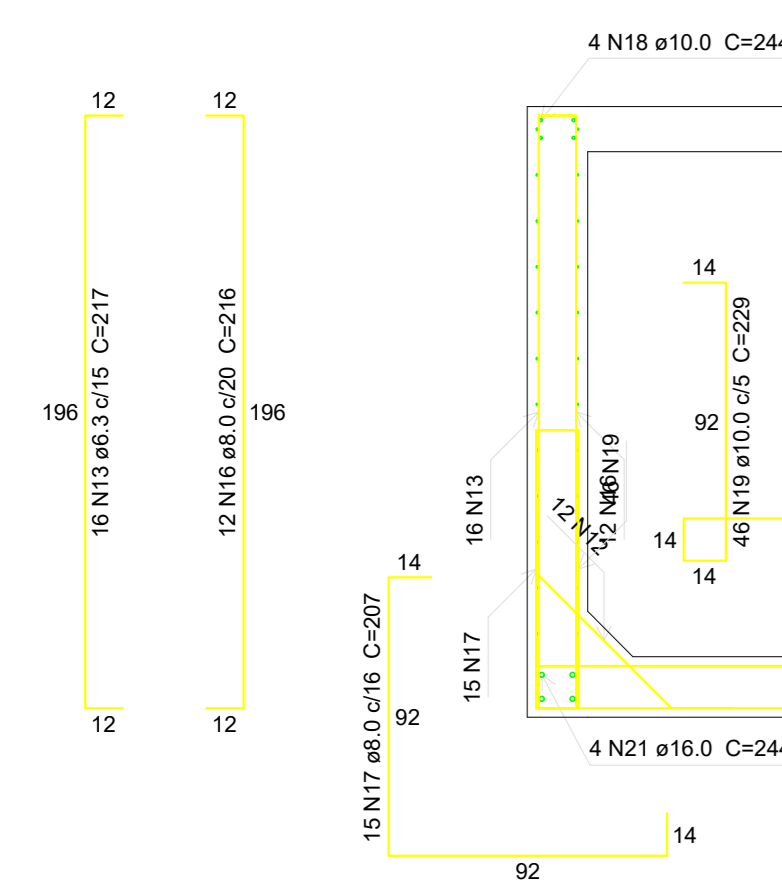
Armadura	Armaduras de distribuição
N31	11 N27 ø5.0 c13 C=VAR
N32	27 N28 ø5.0 c9 C=VAR
N34	35 N24 ø5.0 c13 C=89
N30	62 N25 ø5.0 c13 C=VAR
N29	63 N24 ø5.0 c13 C=89
N33	68 N23 ø5.0 c13 C=456
N32	68 N23 ø5.0 c13 C=456
N28	42 N22 ø5.0 c7 C=VAR
N28	42 N22 ø5.0 c7 C=VAR

**DETALHE DA ARMADURA SUPERIOR DE CONTINUIDADE DA LAJE E MONTAGEM DA ARMADURA DE DISTRIBUIÇÃO**

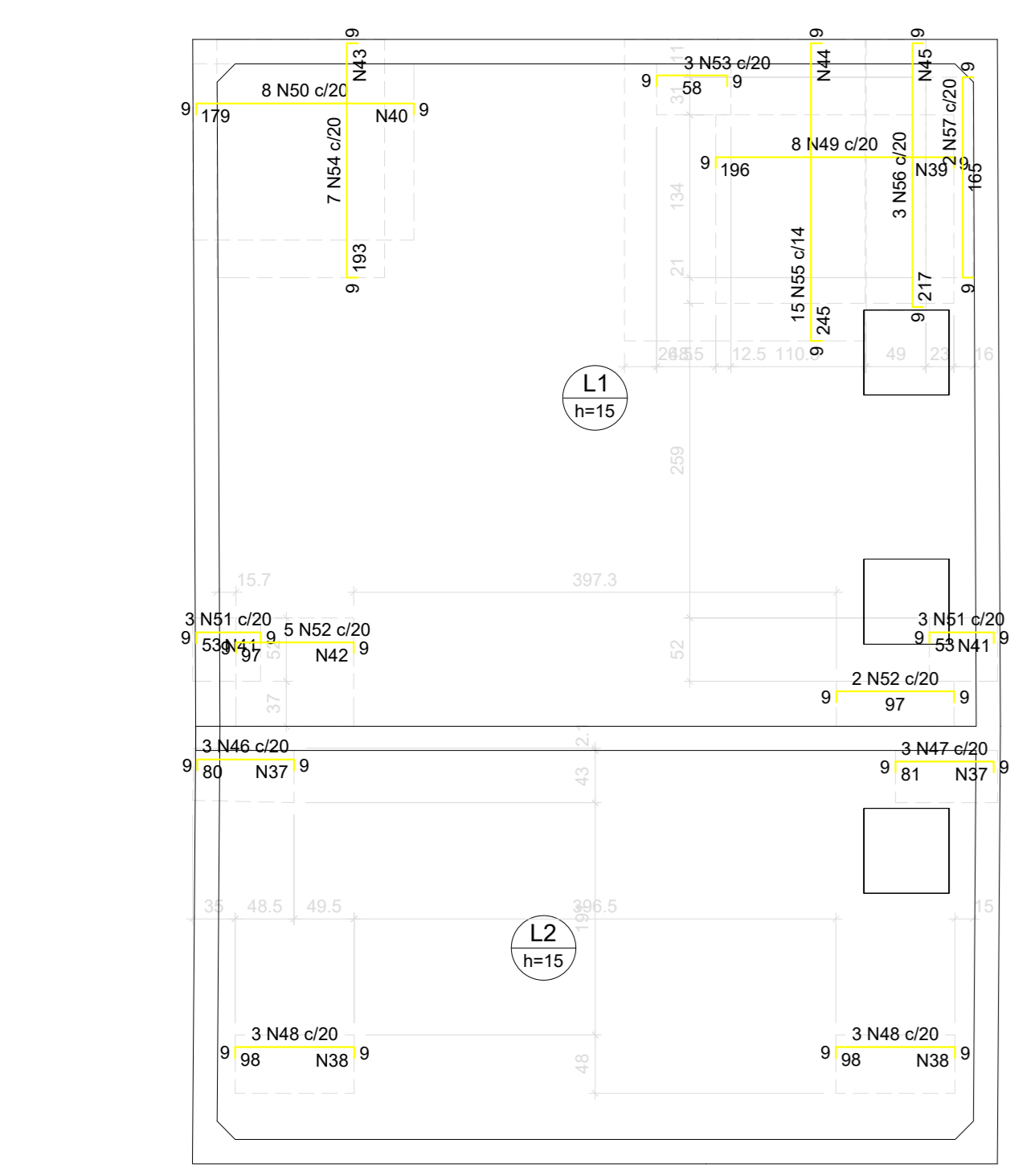


**Relação do aço**

ELEMENTO	AÇO	N	DIAM (mm)	QUANT	C.UNIT (cm)	C.TOTAL (cm)
Corte C-C	CA60	1	8.0	43	102	4386
	CA50	2	6.3	50	217	10850
	CA50	3	6.3	42	209	8736
	CA50	4	6.3	138	233	32154
	CA50	5	8.0	23	216	4968
	CA50	6	8.0	27	319	8613
	CA50	7	8.0	85	343	29155
	CA50	8	10.0	21	215	4515
	CA50	9	12.5	4	427	1708
	CA50	10	16.0	6	437	2622
Corte D-D	CA60	11	16.0	4	427	1708
	CA50	12	5.0	23	102	2346
	CA50	13	6.3	46	217	9962
	CA50	14	6.3	22	330	7040
	CA50	15	8.0	32	345	11040
	CA50	16	8.0	12	216	2592
	CA50	17	8.0	15	207	3105
	CA50	18	10.0	4	244	976
	CA50	19	10.0	46	229	10534
	CA50	20	16.0	6	234	1404
Negativos (1232.0)	CA60	21	16.0	4	244	976
	CA60	22	5.0	84	VAR	VAR
	CA60	23	5.0	62	VAR	VAR
	CA60	24	5.0	88	89	8722
	CA60	25	5.0	62	VAR	VAR
	CA60	26	5.0	27	198	5346
	CA60	27	5.0	11	VAR	VAR
	CA60	28	8.0	161	VAR	VAR
	CA60	29	8.0	47	212	9964
	CA60	30	8.0	55	VAR	VAR
Negativos (1414.0)	CA50	31	8.0	13	VAR	VAR
	CA50	32	10.0	114	310	35340
	CA50	33	10.0	114	359	40920
	CA50	34	10.0	12	479	5748
	CA50	35	10.0	24	296	7104
	CA50	36	16.0	20	260	5200
	CA60	37	5.0	10	43	430
	CA60	38	5.0	12	48	576
	CA60	39	5.0	12	155	1860
	CA60	40	5.0	11	145	1595
Resumo do aço	CA50	41	5.0	8	52	416
	CA50	42	5.0	6	89	534
	CA60	43	5.0	12	138	1656
	CA60	44	5.0	23	198	4554
	CA60	45	5.0	14	49	686
	CA60	46	8.0	3	94	292
	CA50	47	8.0	3	95	285
	CA50	48	8.0	6	112	872
	CA50	49	8.0	8	210	1680
	CA50	50	8.0	8	193	1544
CA50	51	8.0	6	87	402	
CA50	52	8.0	7	111	777	
CA50	53	8.0	3	72	216	
CA50	54	12.5	7	205	1435	
CA50	55	12.5	15	257	3855	
CA50	56	12.5	3	229	687	
CA50	57	12.5	2	177	354	



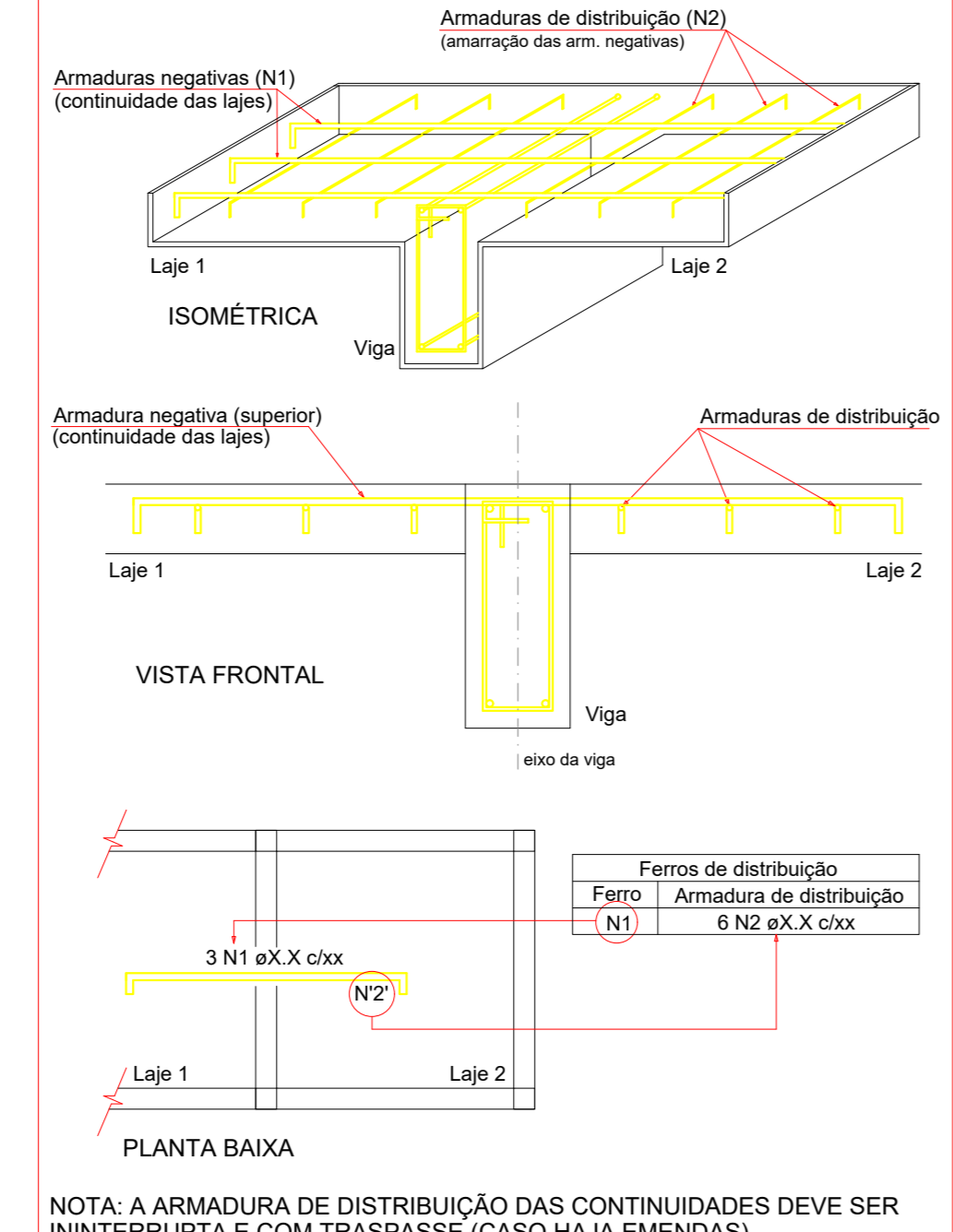
**Corte D-D** escala 1:25



Armaduras de distribuição

Armadura	Armaduras de distribuição
N56	14 N45 ø5.0 c16 C=49
N55	23 N44 ø5.0 c11 C=198
N54	12 N43 ø5.0 c16 C=136
N51	4 N41 ø5.0 c17 C=52
N52	6 N42 ø5.0 c17 C=89
N51	4 N41 ø5.0 c17 C=52
N50	11 N40 ø5.0 c17 C=145
N49	12 N39 ø5.0 c17 C=155
N48	6 N38 ø5.0 c17 C=48
N48	6 N38 ø5.0 c17 C=48
N47	5 N37 ø5.0 c17 C=43
N46	5 N37 ø5.0 c17 C=43

**DETALHE DA ARMADURA SUPERIOR DE CONTINUIDADE DA LAJE E MONTAGEM DA ARMADURA DE DISTRIBUIÇÃO**



**Armação negativa das lajes (1414.0)** escala 1:50

**A & V PROJETOS DE ENGENHARIA**

PROJETO: **PROJETO ESTRUTURAL HOSPITAL DR ESTEVAM**

INTERESSADO: **PREFEITURA DE SOBRAL**

ENDEREÇO: \_\_\_\_\_

MUNICÍPIO: **SOBRAL-CE**

DATA: **24/10/2022** | REVISÃO: **00** | ARQUIVO: \_\_\_\_\_

EST: **48**