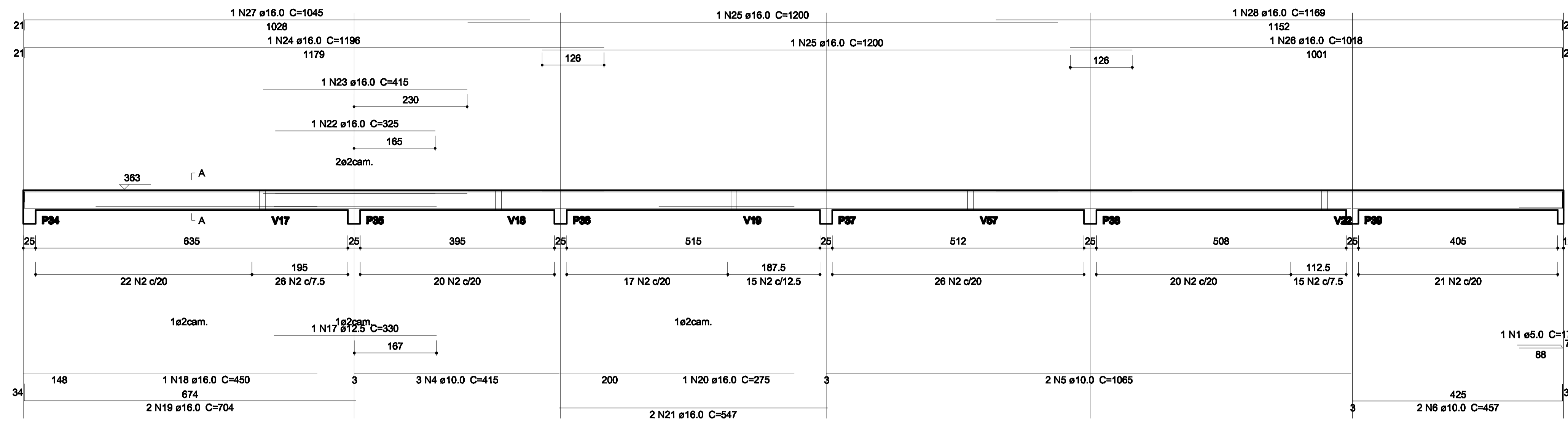
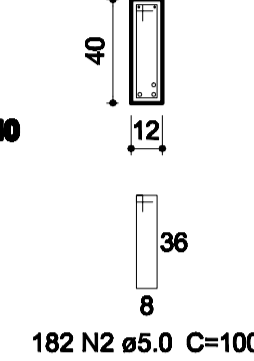


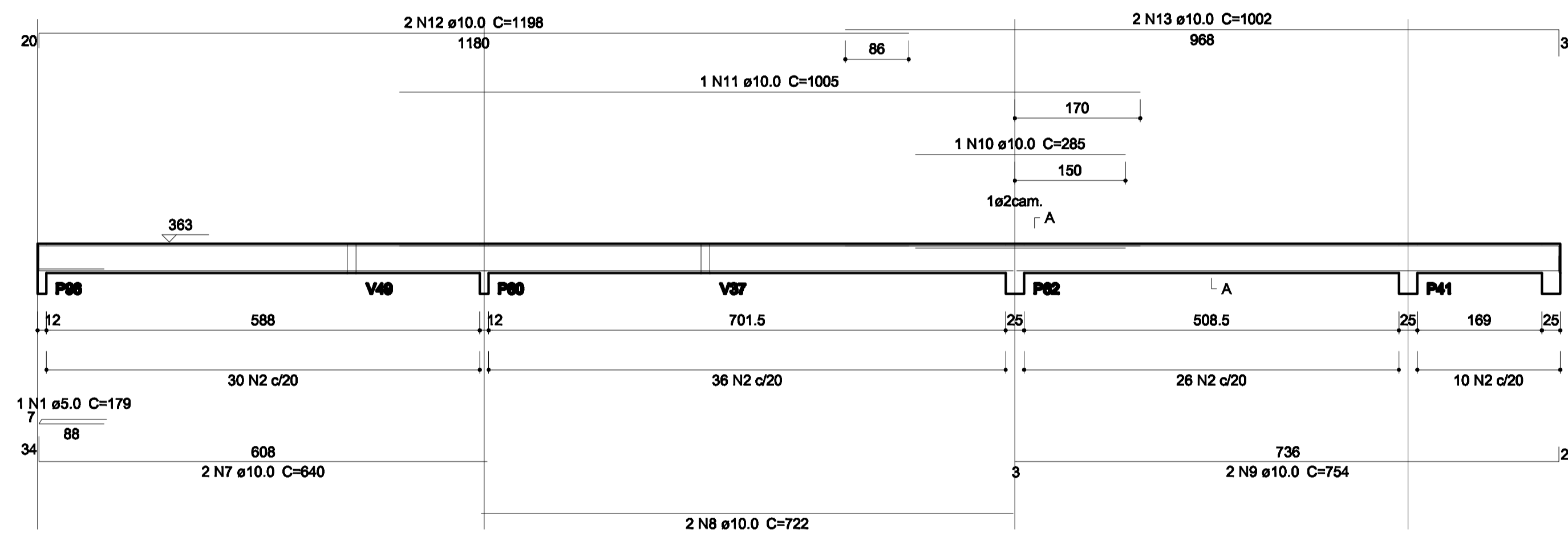
V16
1:50



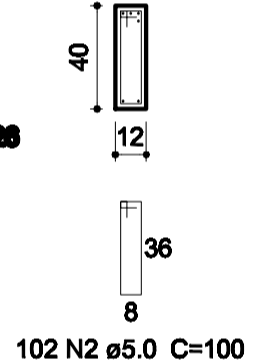
SEÇÃO A-A
ESC 1:25



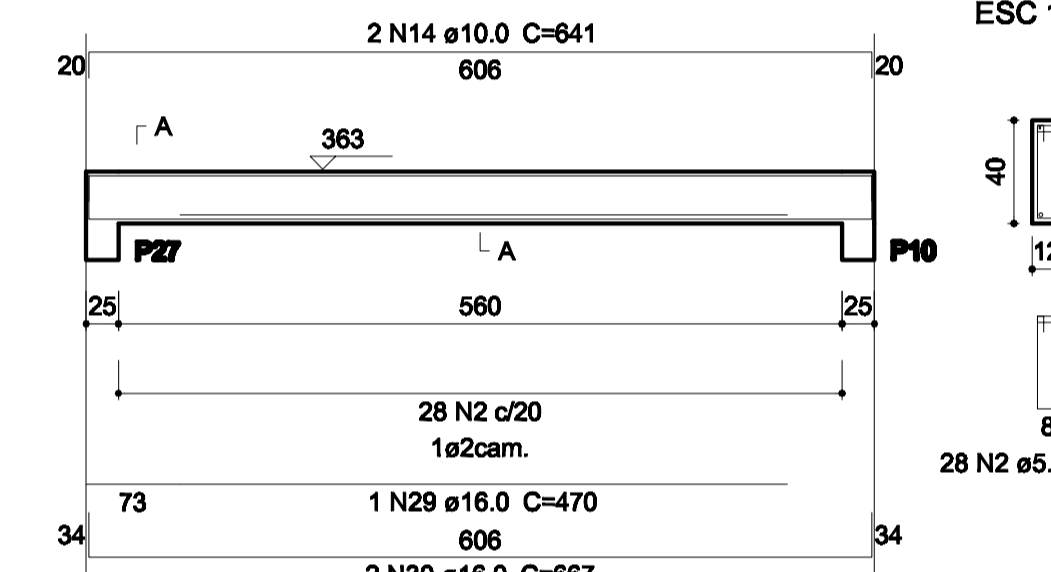
V23
1:50



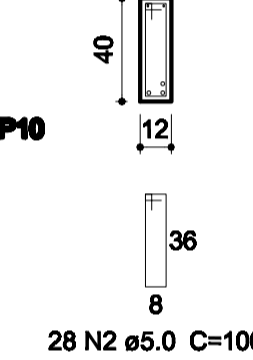
SEÇÃO A-A
ESC 1:25



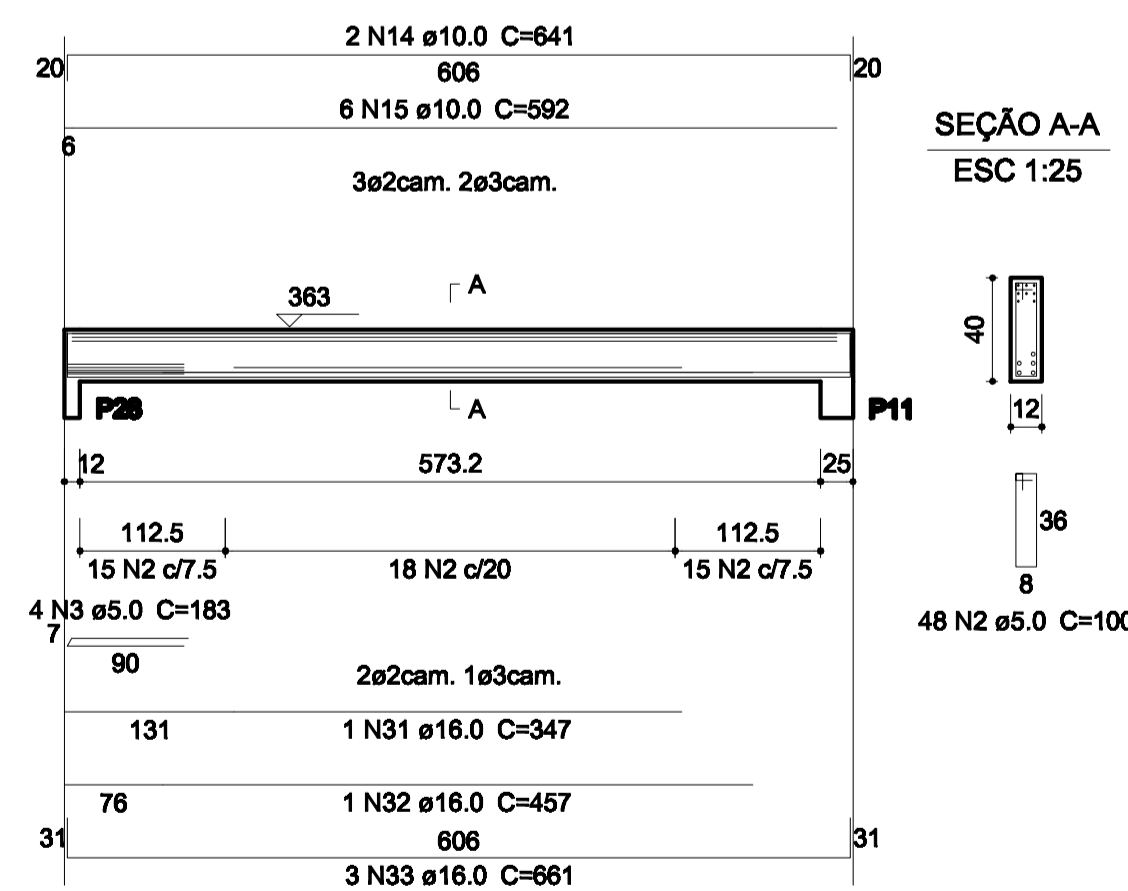
V24
1:50



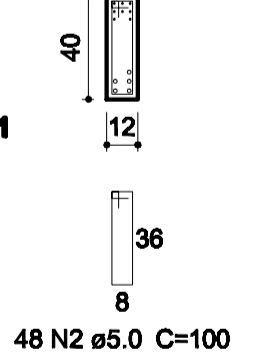
SEÇÃO A-A
ESC 1:25



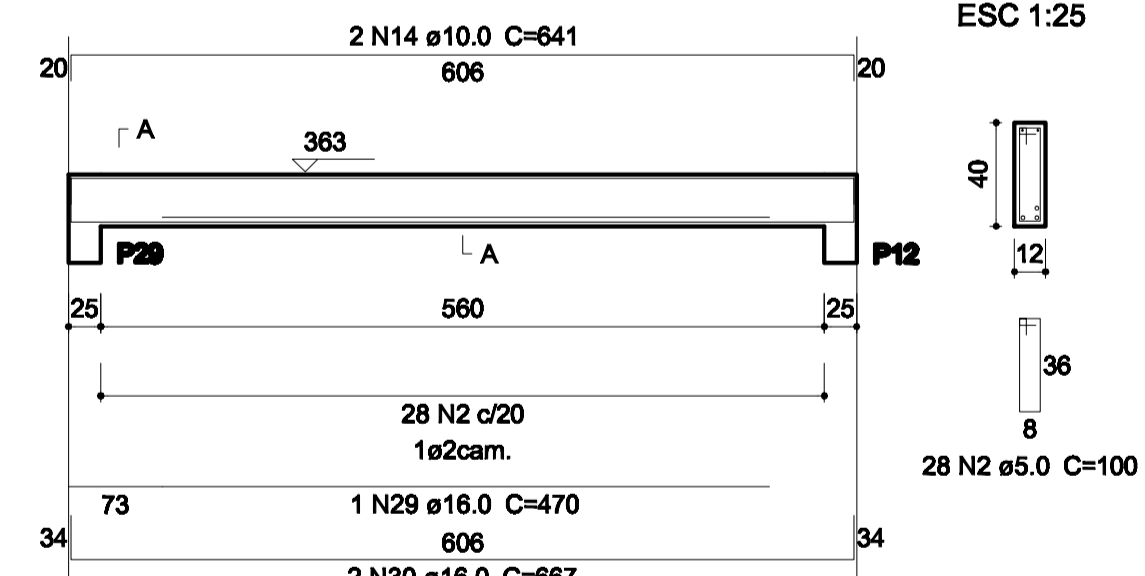
V25
1:50



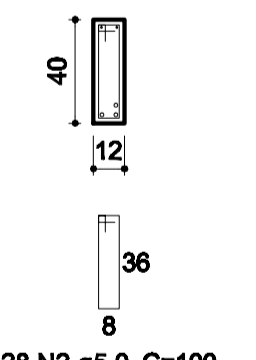
SEÇÃO A-A
ESC 1:25



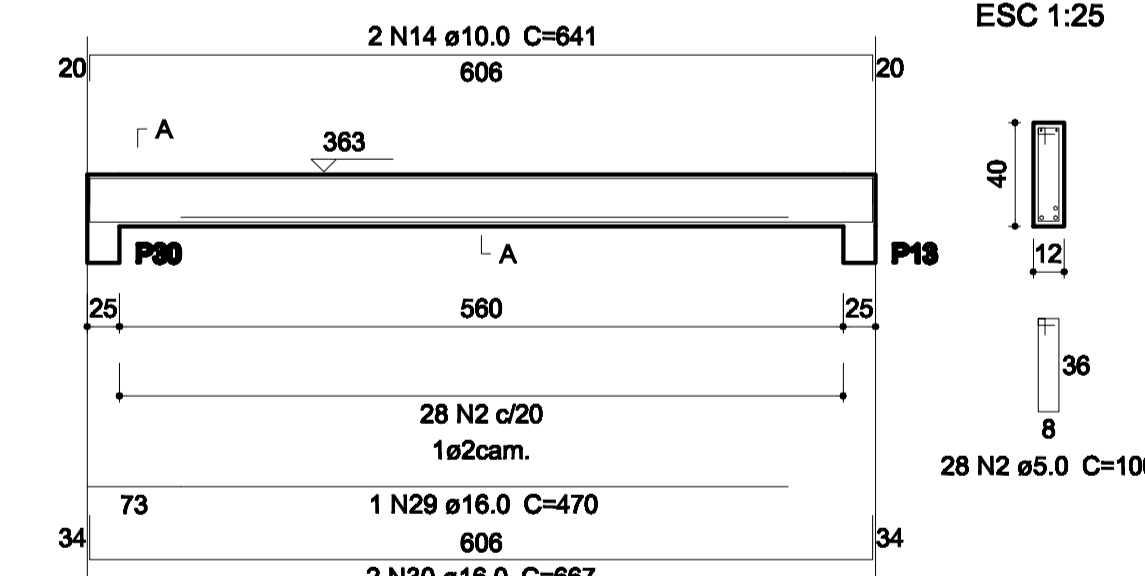
V26
1:50



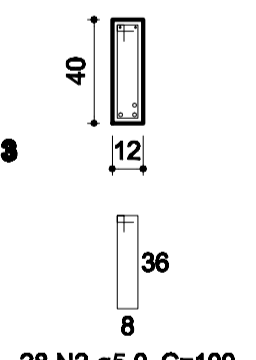
SEÇÃO A-A
ESC 1:25



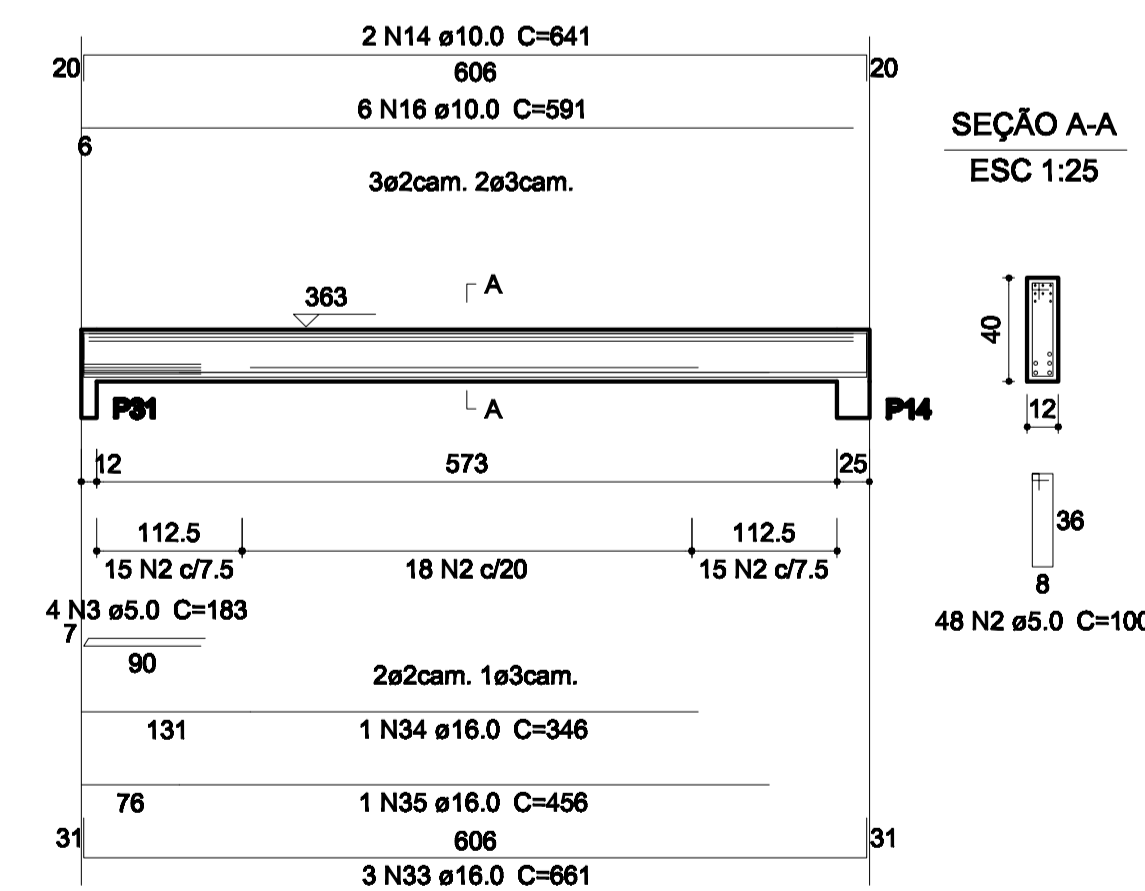
V27
1:50



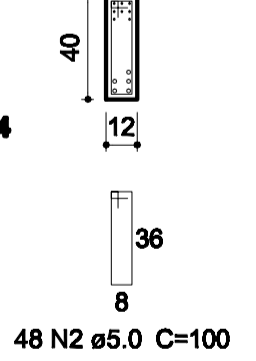
SEÇÃO A-A
ESC 1:25



V28
1:50



SEÇÃO A-A
ESC 1:25



Relação do aço

AÇO	N	DIAM	Q	UNIT (cm)	C.TOTAL (cm)
CA60	1	5.0	2	179	358
	2	5.0	464	100	46400
	3	5.0	8	183	1464
CA50	4	10.0	3	415	1245
	5	10.0	2	1065	2130
	6	10.0	2	457	914
	7	10.0	2	640	1280
	8	10.0	2	722	1444
	9	10.0	2	754	1508
	10	10.0	1	285	285
	11	10.0	1	1005	1005
	12	10.0	2	1198	2396
	13	10.0	2	1022	2044
	14	10.0	10	641	6410
	15	10.0	6	592	3552
	16	10.0	6	581	3546
	17	12.5	1	330	330
	18	16.0	1	450	450
	19	16.0	2	704	1408
	20	16.0	1	275	275
	21	16.0	2	547	1094
	22	16.0	1	325	325
	23	16.0	1	415	415
	24	16.0	1	1196	1196
	25	16.0	2	1200	2400
	26	16.0	1	1018	1018
	27	16.0	1	1045	1045
	28	16.0	1	1169	1169
	29	16.0	3	470	1410
	30	16.0	6	667	4002
	31	16.0	1	347	347
	32	16.0	1	457	457
	33	16.0	6	681	3966
	34	16.0	1	346	346
	35	16.0	1	456	456

Resumo do aço

AÇO	DIAM	C.TOTAL (m)	PESO (kg)
CA50	10.0	277.2	170.9
	12.5	3.3	3.2
	16.0	217.8	343.7
CA60	5.0	482.3	74.3
PESO TOTAL			
CA50		517.8	
CA60		74.3	

Vol. de concreto total (C-20) = 3.96 m³
Área de forma total = 75.88 m²