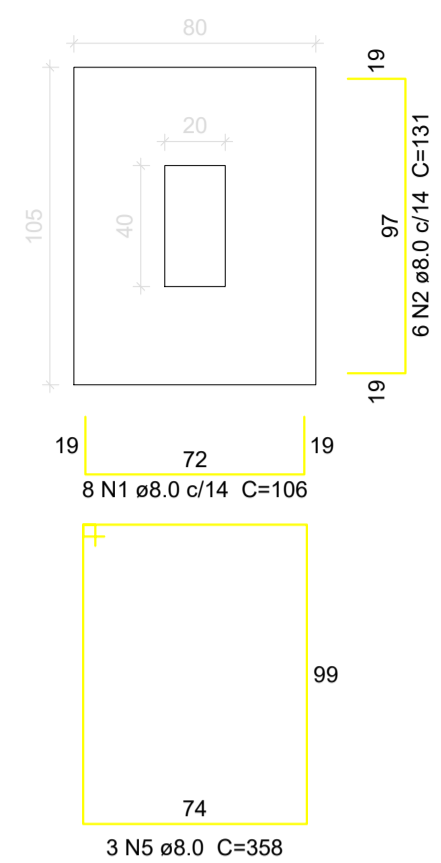


S60

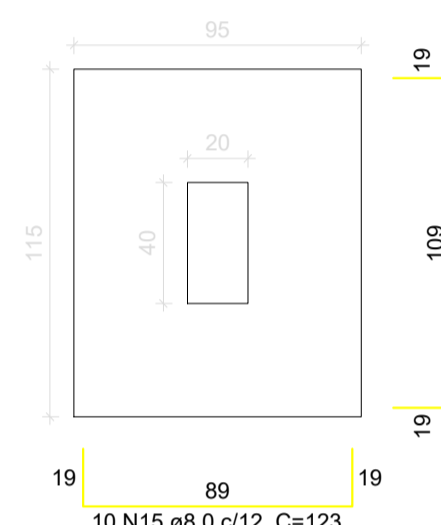
PLANTA
ESC 1:25



Solo com capacidade de suporte > 3.00 kgf/cm²
Solo compactado sobre a sapata
peso específico > 1600.00 kgf/m³

S4=S7=S10

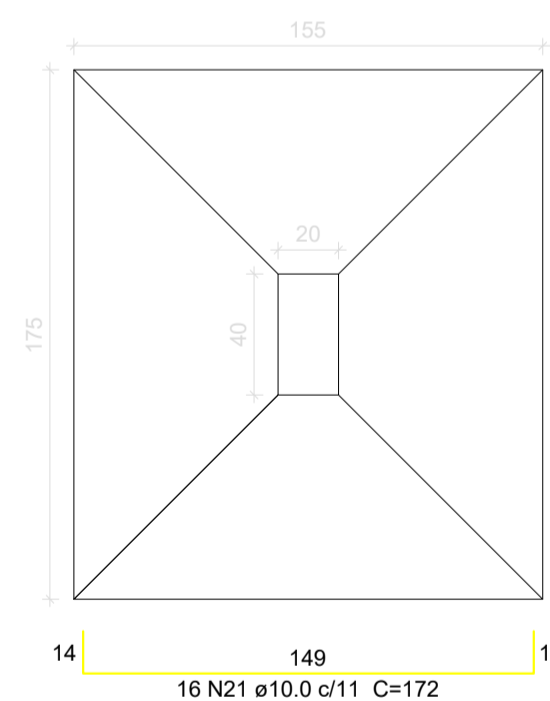
PLANTA
ESC 1:25



Solo com capacidade de suporte > 3.00 kgf/cm²
Solo compactado sobre a sapata
peso específico > 1600.00 kgf/m³

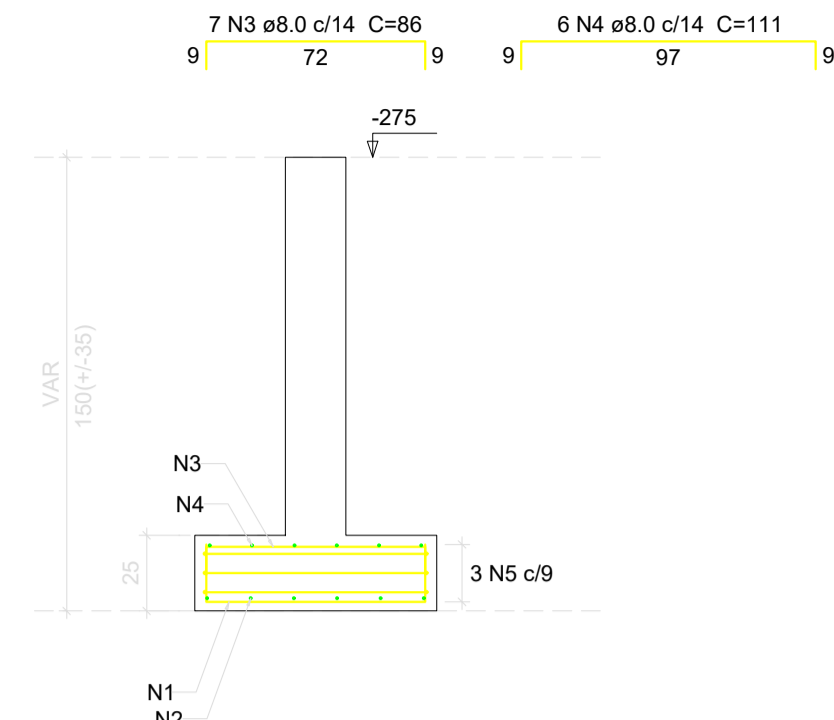
S11

PLANTA
ESC 1:25



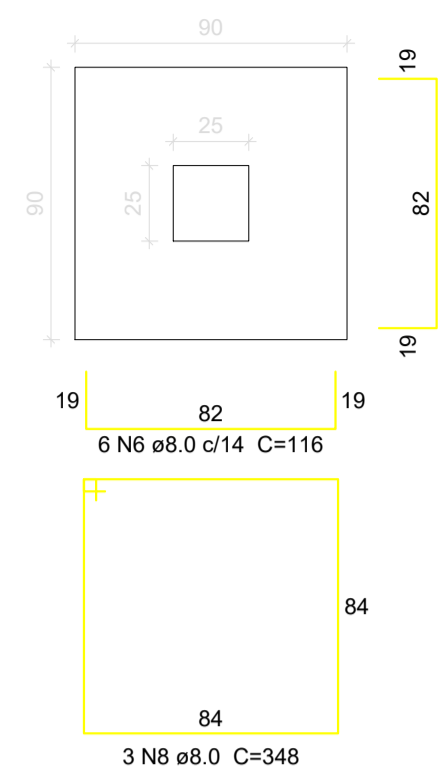
Solo com capacidade de suporte > 3.00 kgf/cm²
Solo compactado sobre a sapata
peso específico > 1600.00 kgf/m³

CORTE
ESC 1:25



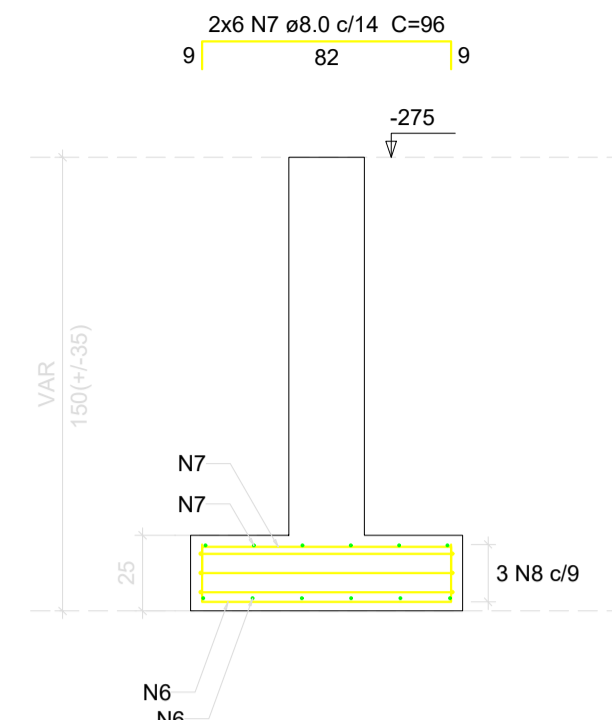
S67

PLANTA
ESC 1:25



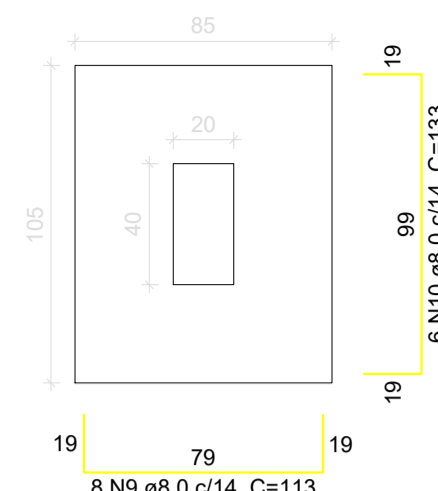
Solo com capacidade de suporte > 3.00 kgf/cm²
Solo compactado sobre a sapata
peso específico > 1600.00 kgf/m³

CORTE
ESC 1:25



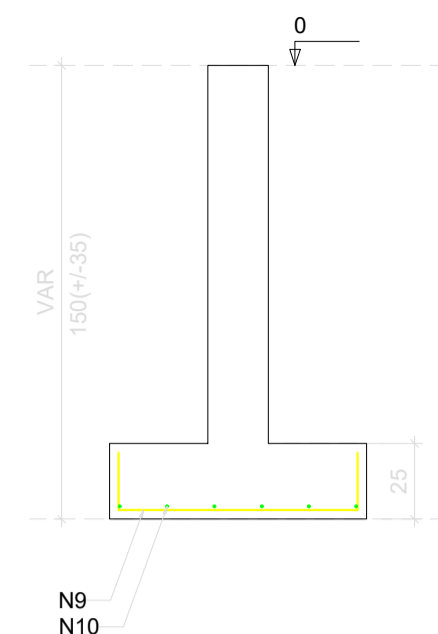
S1=S3=S5

PLANTA
ESC 1:25



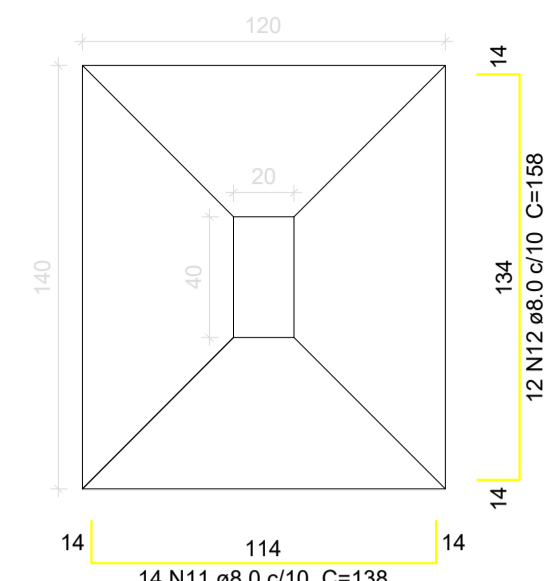
Solo com capacidade de suporte > 3.00 kgf/cm²
Solo compactado sobre a sapata
peso específico > 1600.00 kgf/m³

CORTE
ESC 1:25



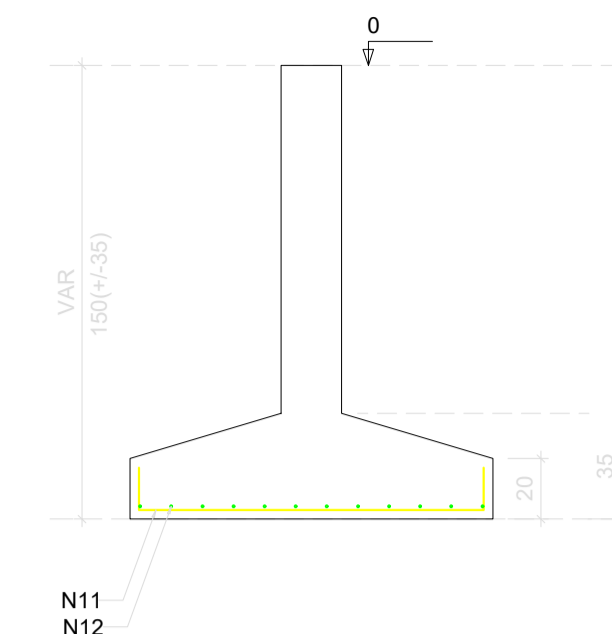
S2=S12

PLANTA
ESC 1:25



Solo com capacidade de suporte > 3.00 kgf/cm²
Solo compactado sobre a sapata
peso específico > 1600.00 kgf/m³

CORTE
ESC 1:25



Relação do aço

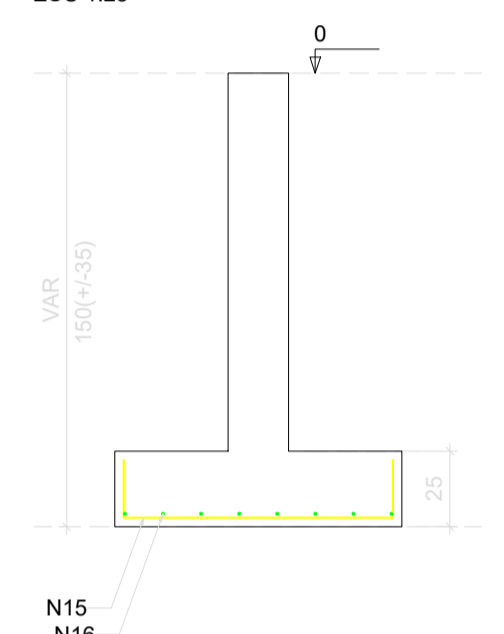
ELEMENTO	AÇO	N	DIAM (mm)	QUANT	C.UNIT (cm)	C.TOTAL (cm)
SUBSOLO S60	CA50	1	8.0	8	106	848
	CA50	2	8.0	6	131	786
	CA50	3	8.0	7	86	602
	CA50	4	8.0	6	111	666
	CA50	5	8.0	3	358	1074
S67	CA50	6	8.0	12	116	1392
	CA50	7	8.0	12	96	1152
	CA50	8	8.0	3	348	1044
TÉRREO	CA50	9	8.0	24	113	2712
	CA50	10	8.0	18	133	2394
2xS2	CA50	11	8.0	28	138	3864
	CA50	12	8.0	24	158	3792
S6	CA50	13	8.0	7	103	721
	CA50	14	8.0	6	123	738
3xS7	CA50	15	8.0	30	123	3690
	CA50	16	8.0	24	143	3432
S8	CA50	17	10.0	16	177	2832
	CA50	18	10.0	14	197	2758
S9	CA50	19	8.0	12	128	1536
	CA50	20	8.0	10	148	1480
S11	CA50	21	10.0	16	172	2752
	CA50	22	10.0	14	192	2688

Resumo do aço

AÇO	DIAM (mm)	C.TOTAL (m)	PESO (kg)
CA50	8.0	319.3	126
	10.0	110.3	68
PESO TOTAL (kg)			194

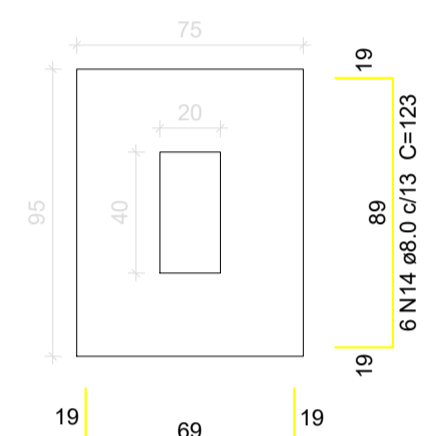
Volume de concreto (C-25) = 5.05 m³
Área de forma = 14.4 m²

CORTE
ESC 1:25



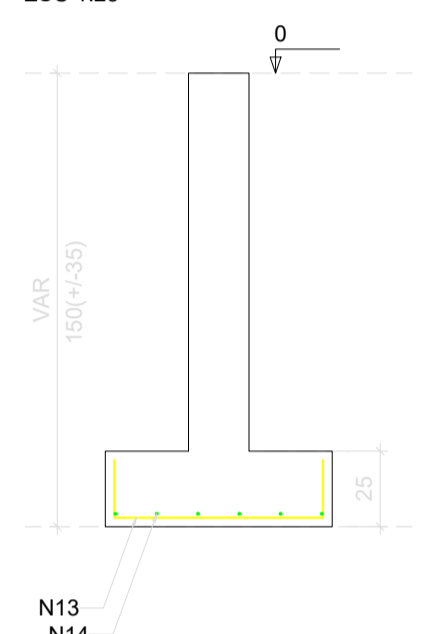
S6

PLANTA
ESC 1:25



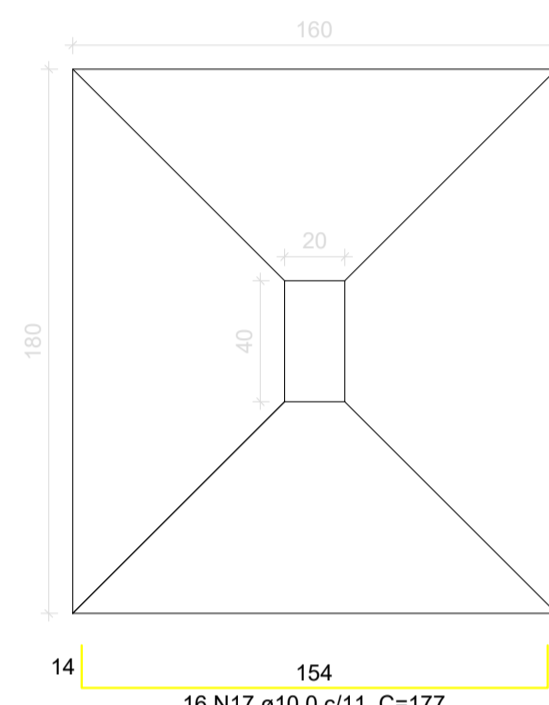
Solo com capacidade de suporte > 3.00 kgf/cm²
Solo compactado sobre a sapata
peso específico > 1600.00 kgf/m³

CORTE
ESC 1:25



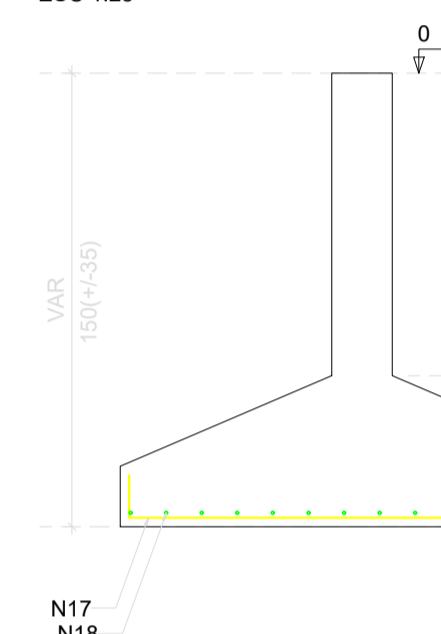
S8

PLANTA
ESC 1:25



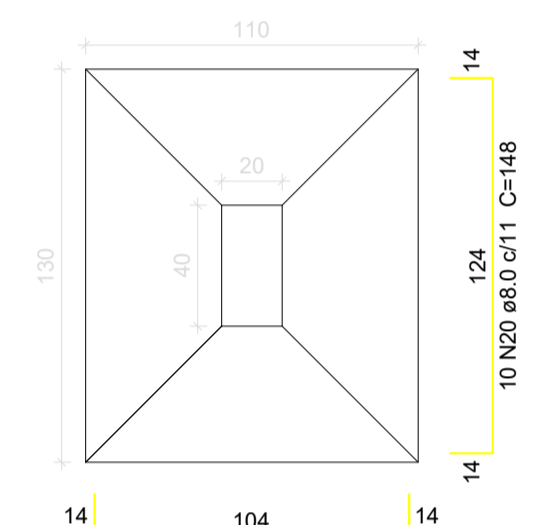
Solo com capacidade de suporte > 3.00 kgf/cm²
Solo compactado sobre a sapata
peso específico > 1600.00 kgf/m³

CORTE
ESC 1:25



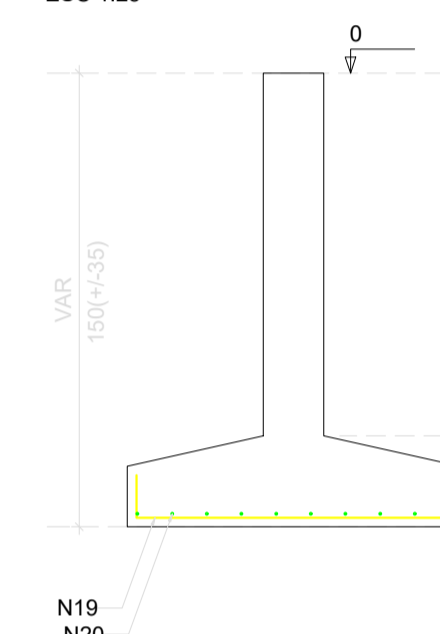
S9

PLANTA
ESC 1:25



Solo com capacidade de suporte > 3.00 kgf/cm²
Solo compactado sobre a sapata
peso específico > 1600.00 kgf/m³

CORTE
ESC 1:25



A & V PROJETOS DE ENGENHARIA

PROJETO: **PROJETO ESTRUTURAL HOSPITAL DR ESTEVAM**

INTERESSADO: **PREFEITURA DE SOBRAL**

ENDEREÇO: -

MUNICÍPIO: **SOBRAL-CE**

DESENHOS DA PRANCHA	ESCALA
DET. FUNDAÇÕES FL 03	INDICADA