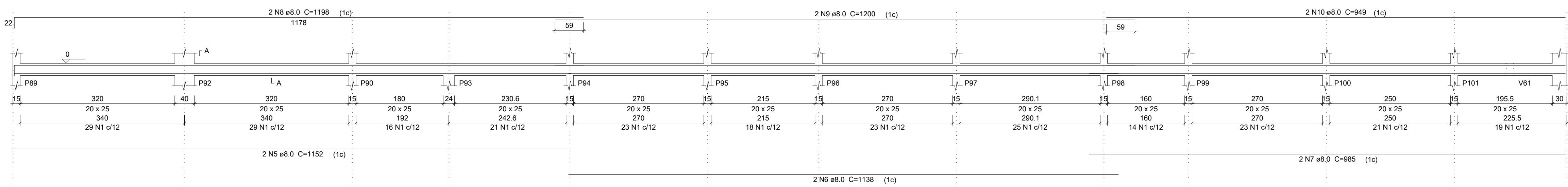
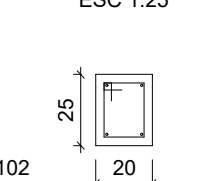


V31
ESC 1:50



SEÇÃO A-A
ESC 1:25

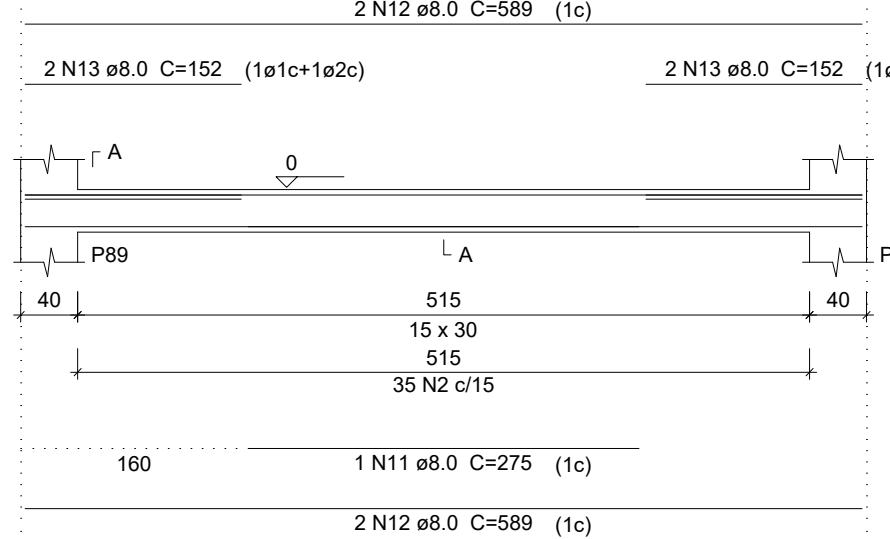


Relação do aço

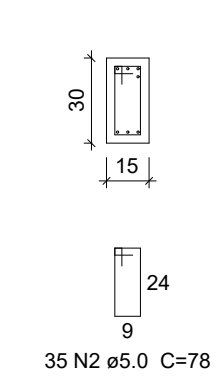
CAO	N	DIAM	Q	UNIT (cm)	C.TOTAL (cm)
V31					V36
V34					V35
V37					V38
V40					V41
V43					V44
V46					V45
V49					V48
V52					V51
					V54

CAO	N	DIAM	Q	UNIT (cm)	C.TOTAL (cm)
CA60	1	5.0	261	78	20358
	2	5.0	35	78	2730
	3	5.0	1068	58	61944
	4	5.0	60	68	4080
CA50	5	8.0	2	1152	2304
	6	8.0	2	1138	2276
	7	8.0	2	985	1970
	8	8.0	2	1198	2396
	9	8.0	2	1200	2400
	10	8.0	2	949	1898
	11	8.0	1	275	275
	12	8.0	4	580	2356
	13	8.0	4	152	608
	14	8.0	2	689	1378
	15	8.0	14	464	6496
	16	8.0	2	475	950
	17	8.0	4	274	1096
	18	8.0	2	304	608
	19	8.0	2	351	702
	20	8.0	1	145	145
	21	8.0	1	393	393
	22	8.0	2	697	1394
	23	8.0	1	117	117
	24	8.0	1	507	507
	25	8.0	1	527	527
	26	8.0	2	744	1488
	27	8.0	2	1044	2088
	28	8.0	2	1052	2104
	29	8.0	2	174	348
	30	8.0	2	196	392
	31	8.0	2	629	1258
	32	8.0	32	424	13568
	33	8.0	2	425	850
	34	8.0	1	125	125
	35	8.0	1	132	132
	36	8.0	2	448	896
	37	8.0	1	113	113
	38	8.0	1	122	122
	39	10.0	2	722	1444
	40	10.0	2	641	1282
	41	10.0	2	485	970
	42	10.0	2	489	978
	43	10.0	2	443	886
	44	10.0	2	490	980

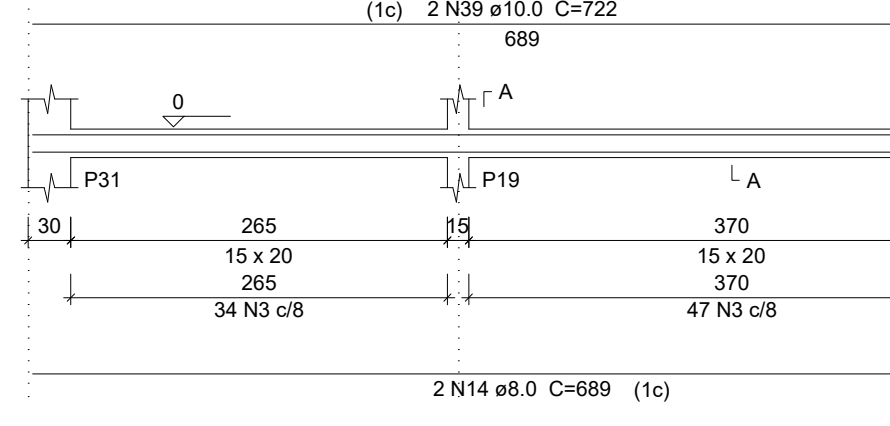
V32
ESC 1:50



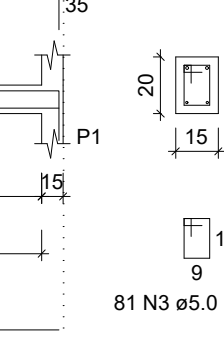
SEÇÃO A-A
ESC 1:25



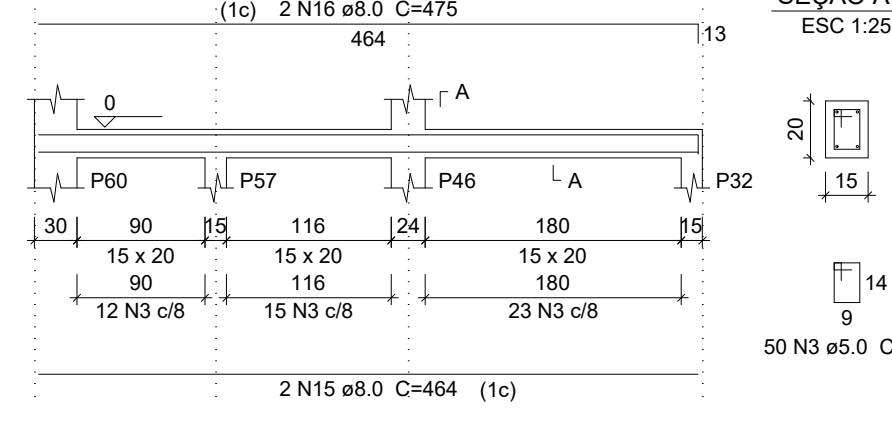
V33
ESC 1:50



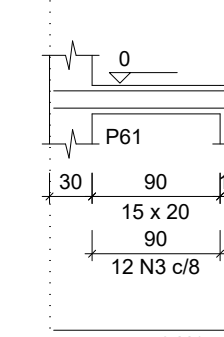
SEÇÃO A-A
ESC 1:25



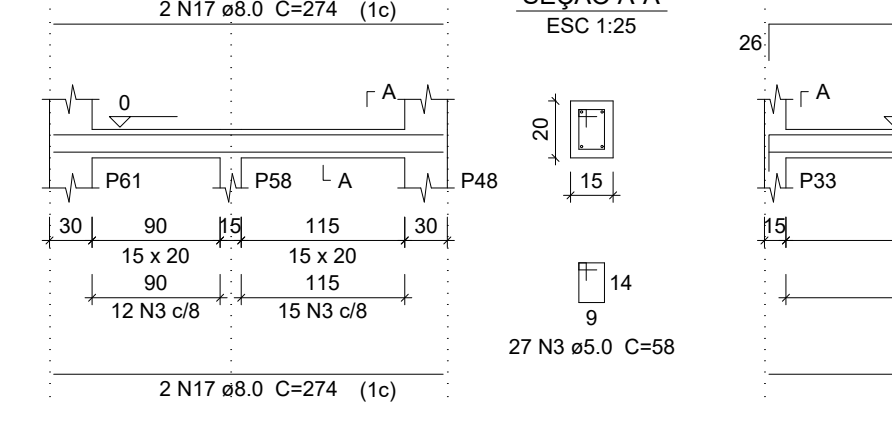
V34
ESC 1:50



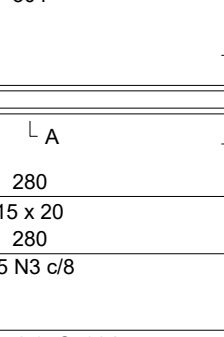
SEÇÃO A-A
ESC 1:25



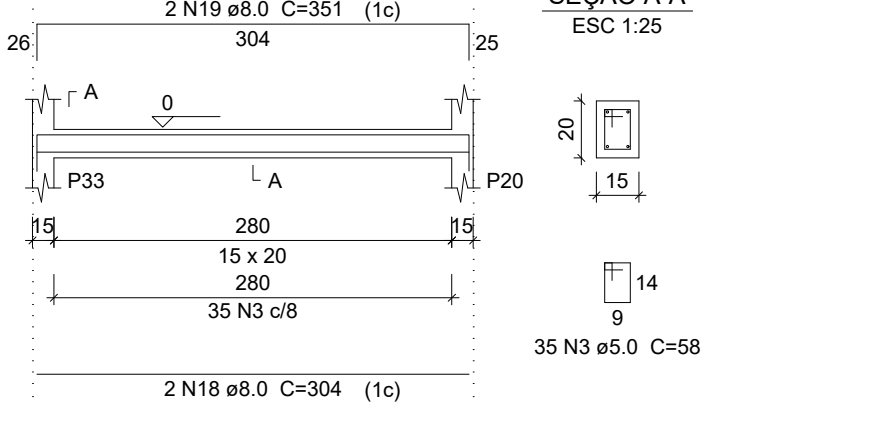
V35
ESC 1:50



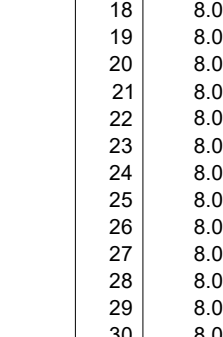
SEÇÃO A-A
ESC 1:25



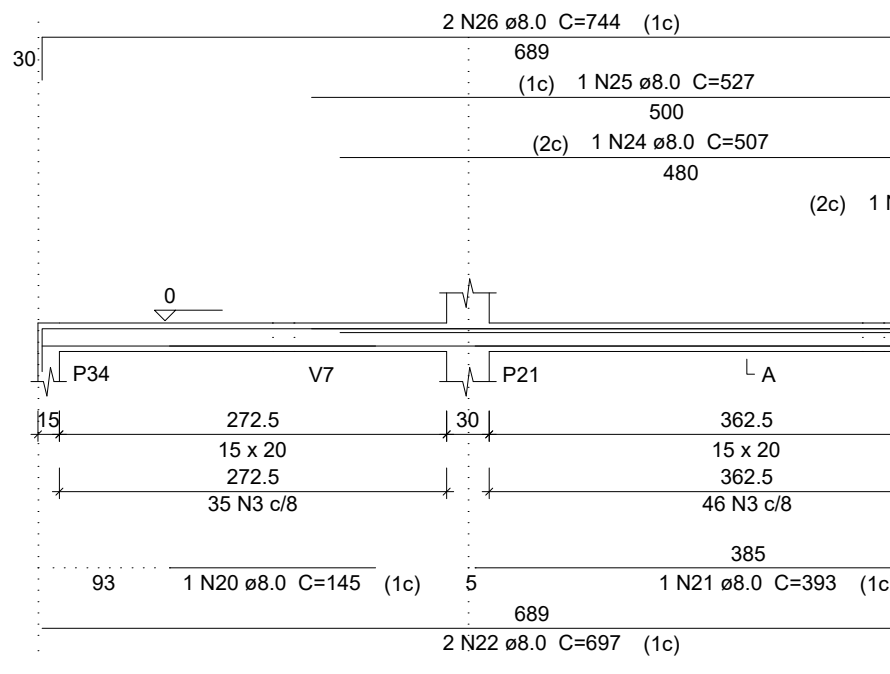
V36
ESC 1:50



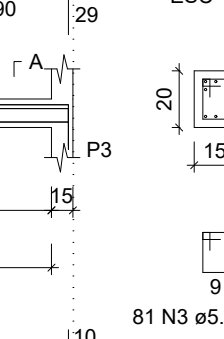
SEÇÃO A-A
ESC 1:25



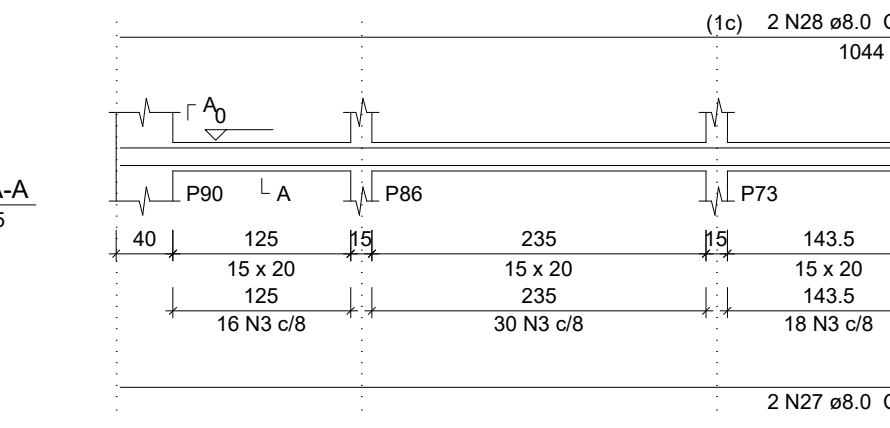
V37
ESC 1:50



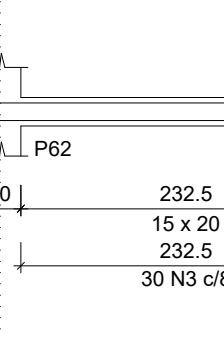
SEÇÃO A-A
ESC 1:25



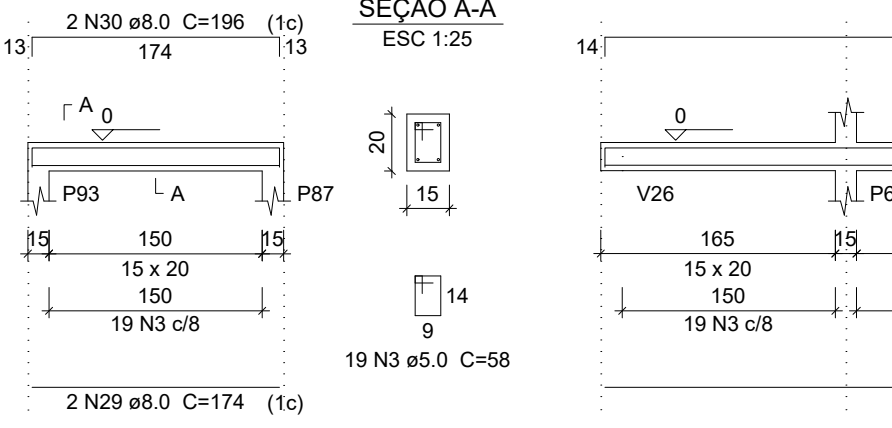
V38
ESC 1:50



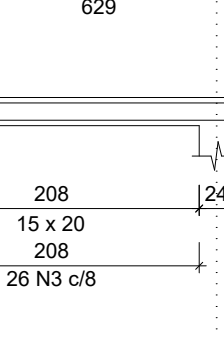
SEÇÃO A-A
ESC 1:25



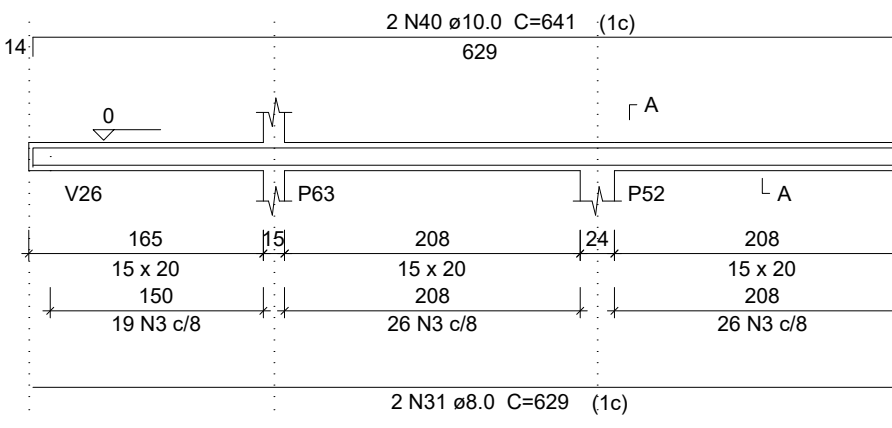
V39
ESC 1:50



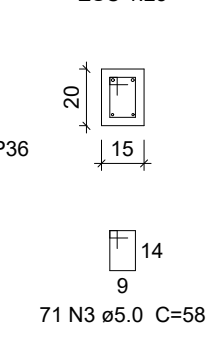
SEÇÃO A-A
ESC 1:25



V40
ESC 1:50



SEÇÃO A-A
ESC 1:25

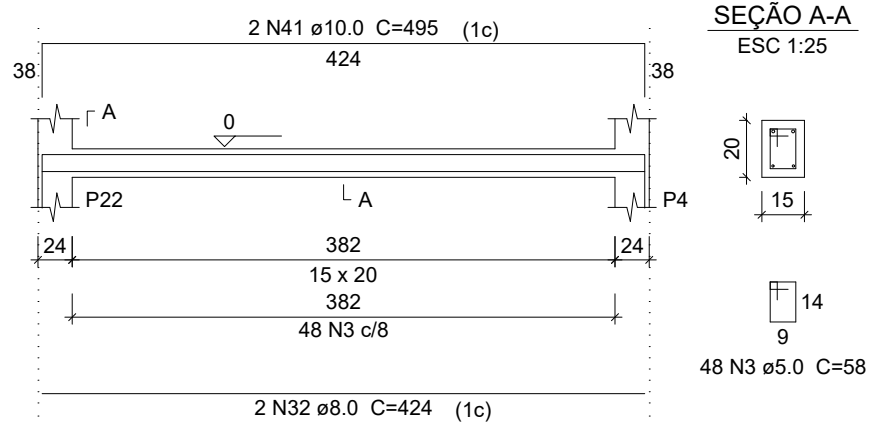


Resumo do aço

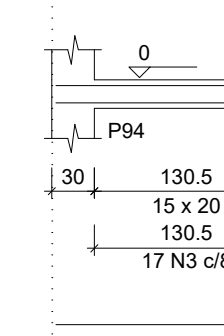
CAO	DIAM	C.TOTAL (m)	PESO (kg)
CA50	8.0	542.8	214.2
	10.0	65.6	40.4
CA60	5.0	891.2	137.4
PESO TOTAL			
CA50		254.6	
CA60		137.4	

Vol. de concreto total (C-25) = 5.06 m³
Área de forma total = 84.71 m²

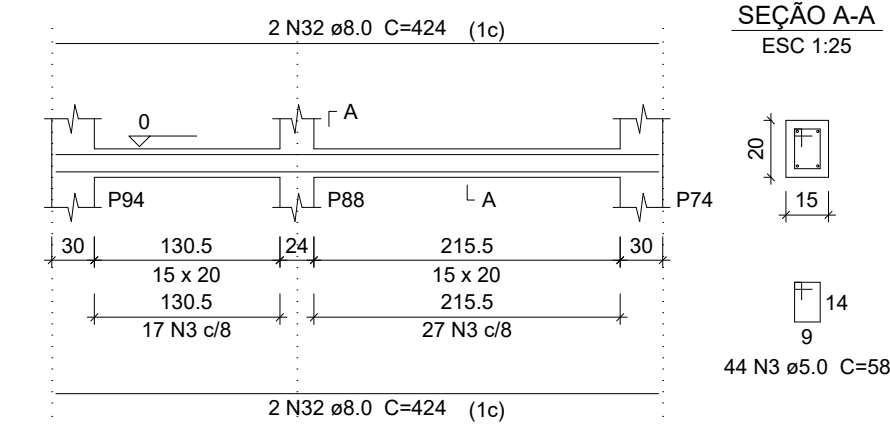
V41
ESC 1:50



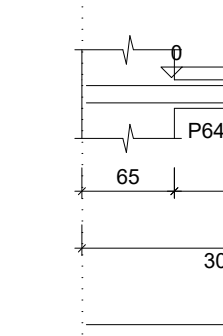
SEÇÃO A-A
ESC 1:25



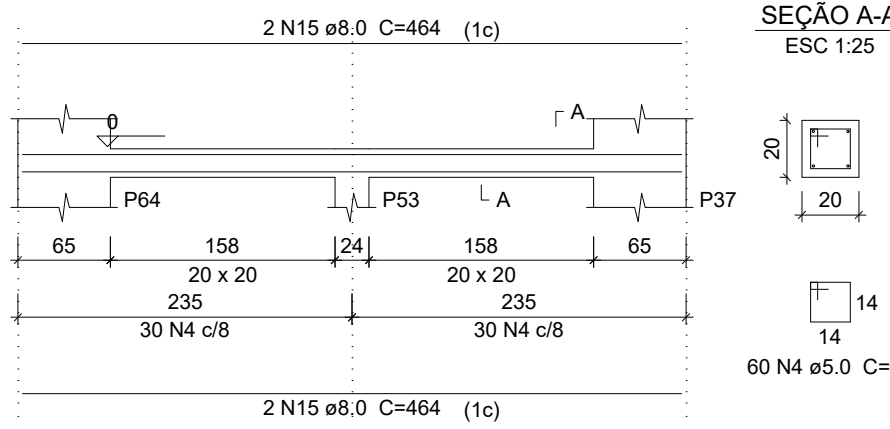
V42
ESC 1:50



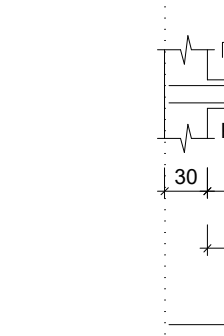
SEÇÃO A-A
ESC 1:25



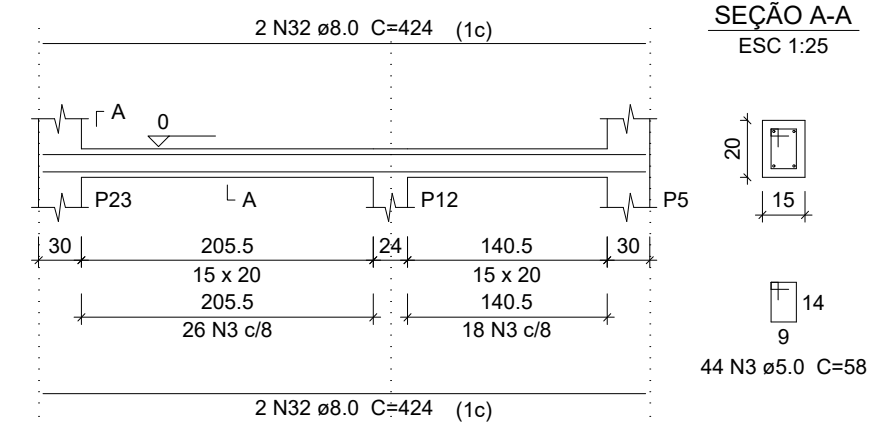
V43
ESC 1:50



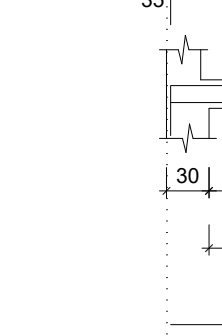
SEÇÃO A-A
ESC 1:25



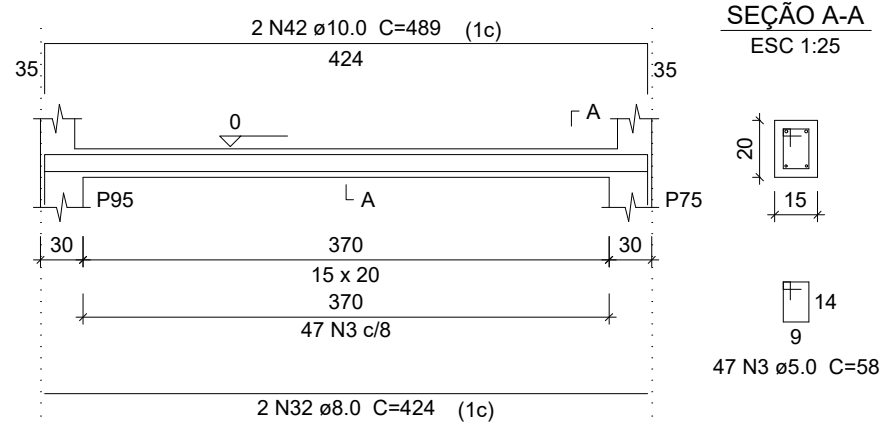
V44
ESC 1:50



SEÇÃO A-A
ESC 1:25



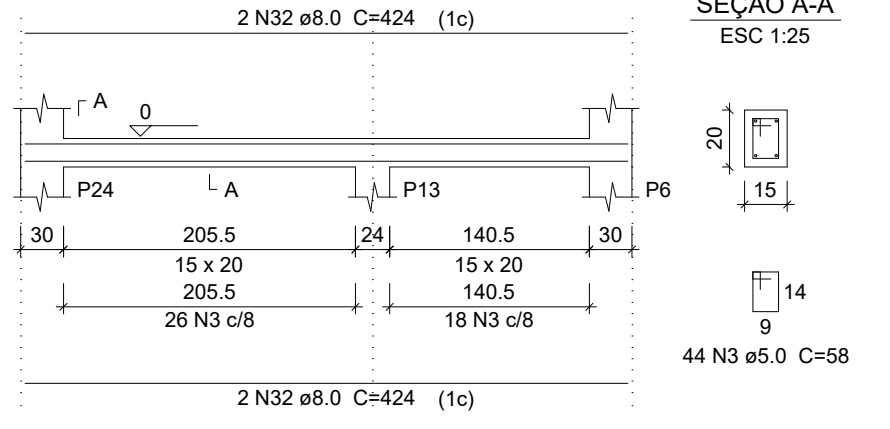
V45
ESC 1:50



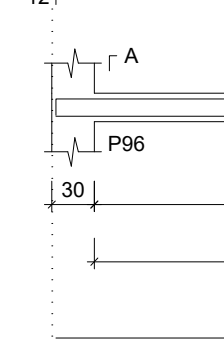
SEÇÃO A-A
ESC 1:25



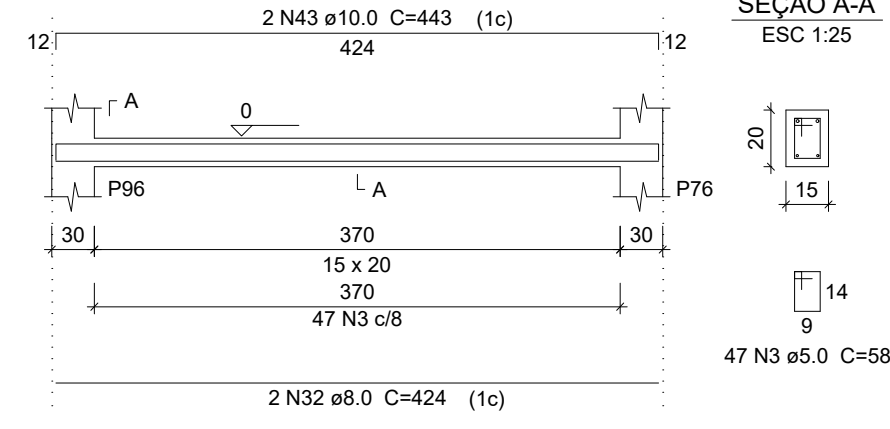
V46
ESC 1:50



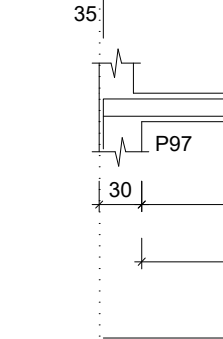
SEÇÃO A-A
ESC 1:25



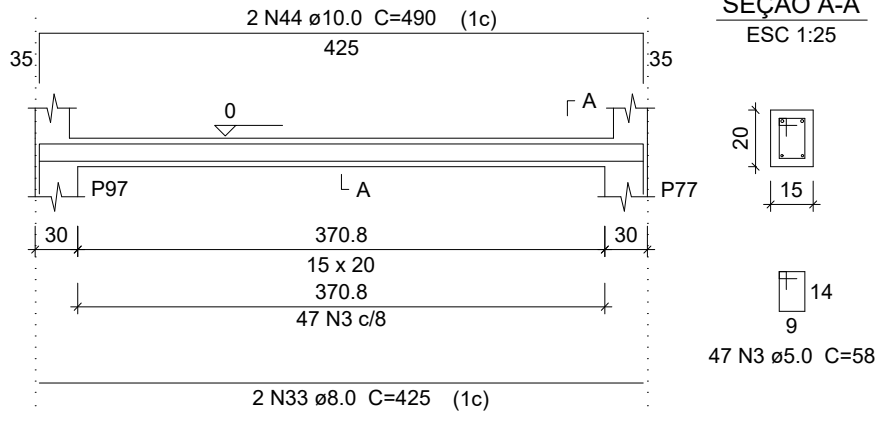
V47
ESC 1:50



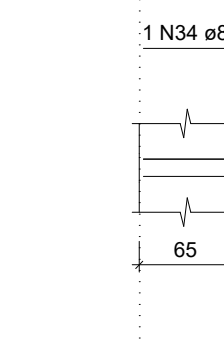
SEÇÃO A-A
ESC 1:25



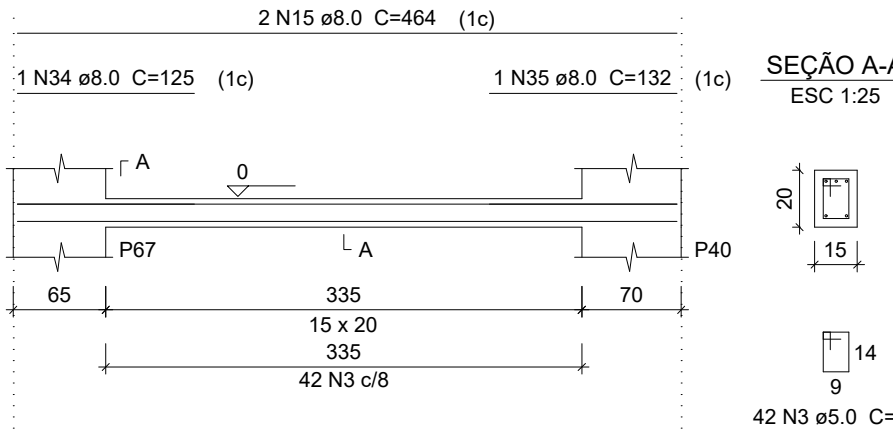
V48
ESC 1:50



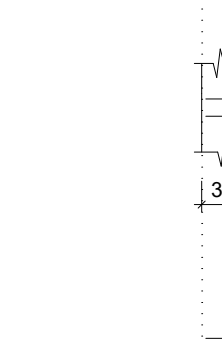
SEÇÃO A-A
ESC 1:25



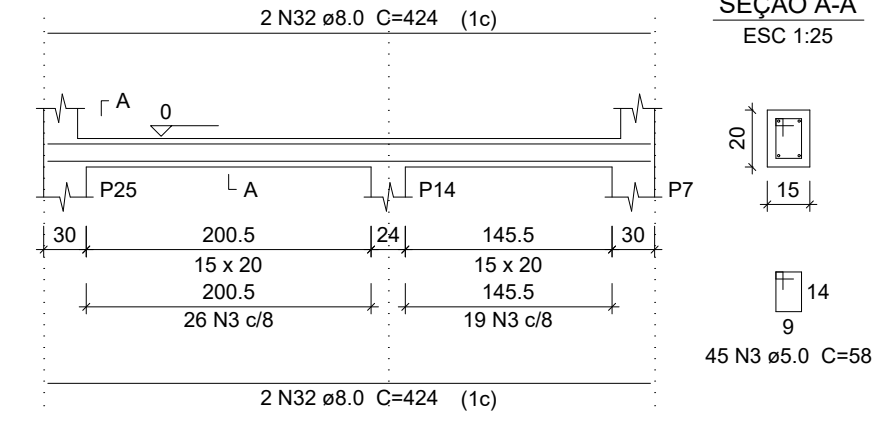
V49
ESC 1:50



SEÇÃO A-A
ESC 1:25



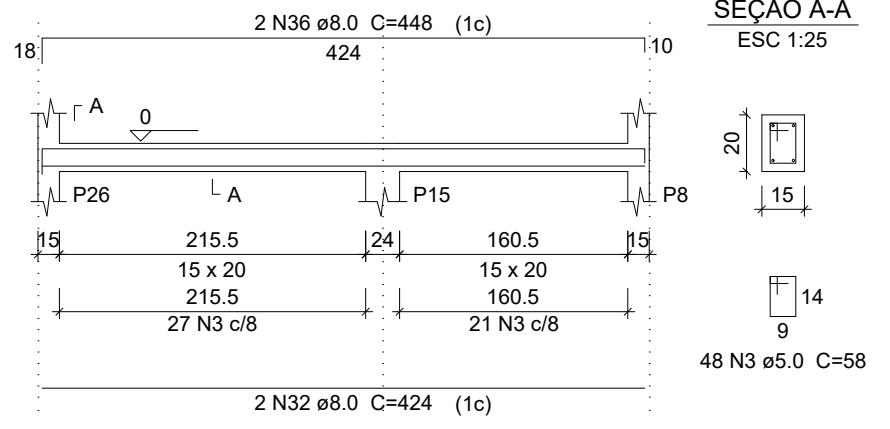
V50
ESC 1:50



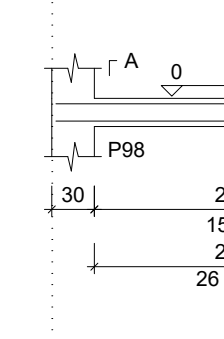
SEÇÃO A-A
ESC 1:25



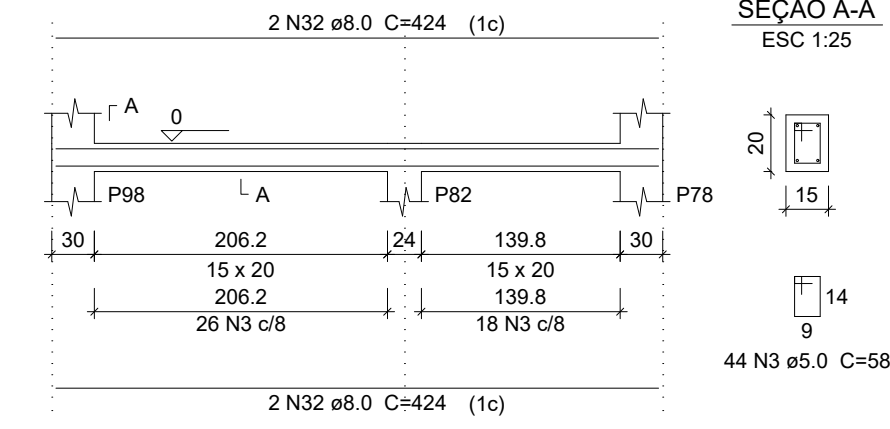
V51
ESC 1:50



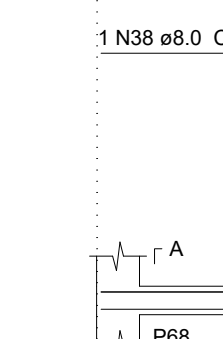
SEÇÃO A-A
ESC 1:25



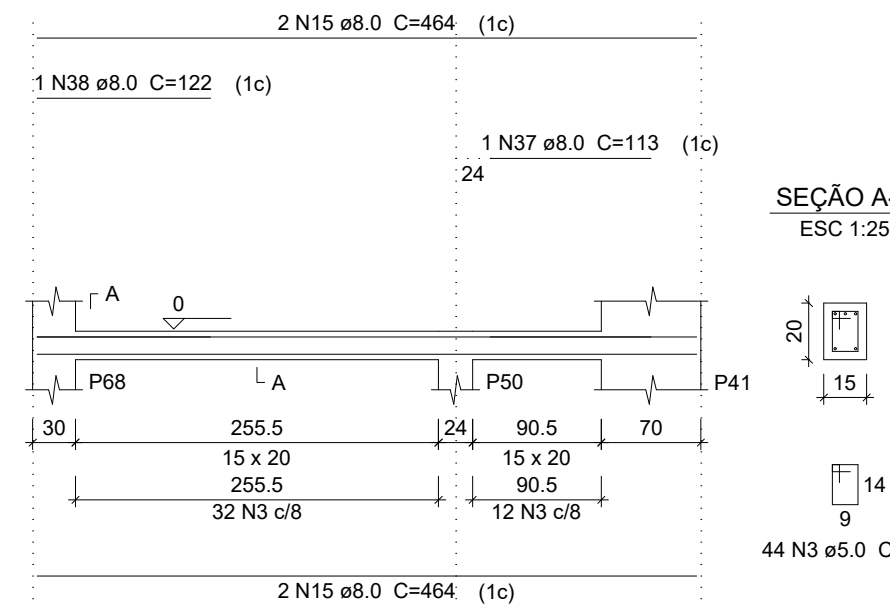
V52
ESC 1:50



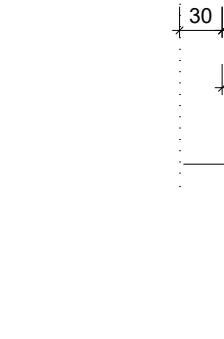
SEÇÃO A-A
ESC 1:25



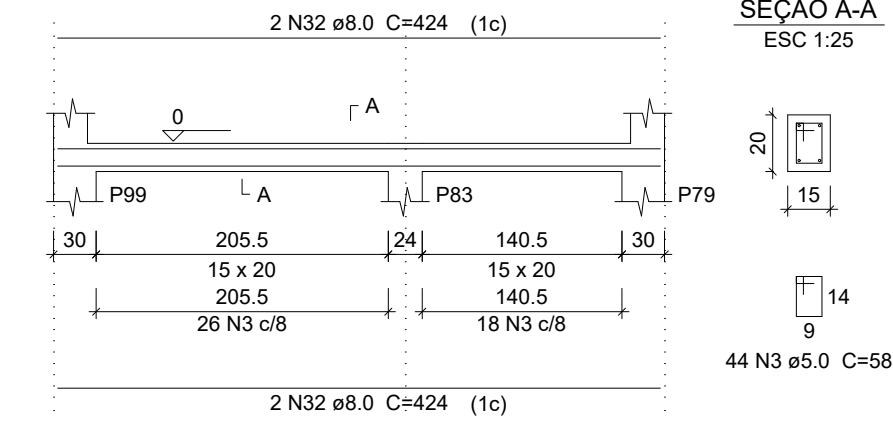
V53
ESC 1:50



SEÇÃO A-A
ESC 1:25



V54
ESC 1:50



SEÇÃO A-A
ESC 1:25



OR PENA

1	0.10
2	0.20
3	0.30
4	0.40
5	0.50
6	0.80
7	1.30

COLORIDA

8	15.10
9	0.09
10	0.10

SECOMP - SECRETARIA DE OBRAS, MOBILIDADE E SERVIÇOS PÚBLICOS

PROJETO: CSF- CAMPO DOS VELHOS
PROJETO ESTRUTURAL

INTERESSADO: PREFEITURA DE SOBRAL

ENDEREÇO: BAIRRO CAMPO DOS VELHOS

MUNICÍPIO: SOBRAL-CE

AUTOR: ENG. CARLOS EDUARDO BRATZ
CREA - 321948

PREFEITURA DE SOBRAL

DATA: MAIO/2019

REVISÃO

ARQUIVO

PRACHA: 06/22