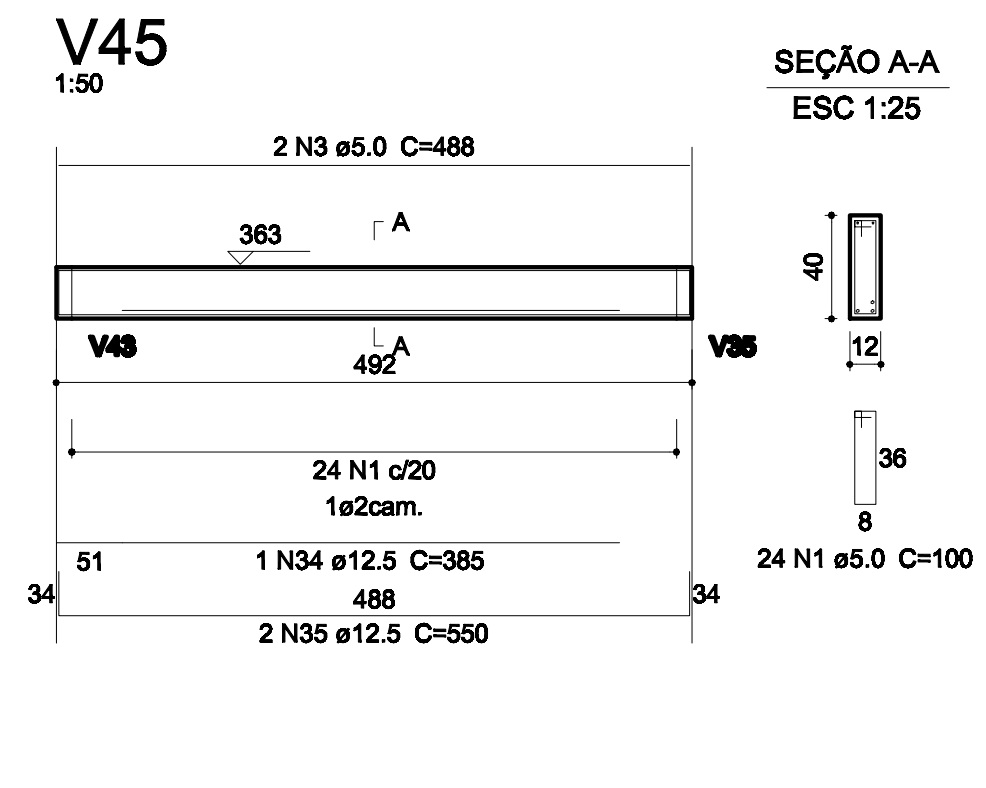
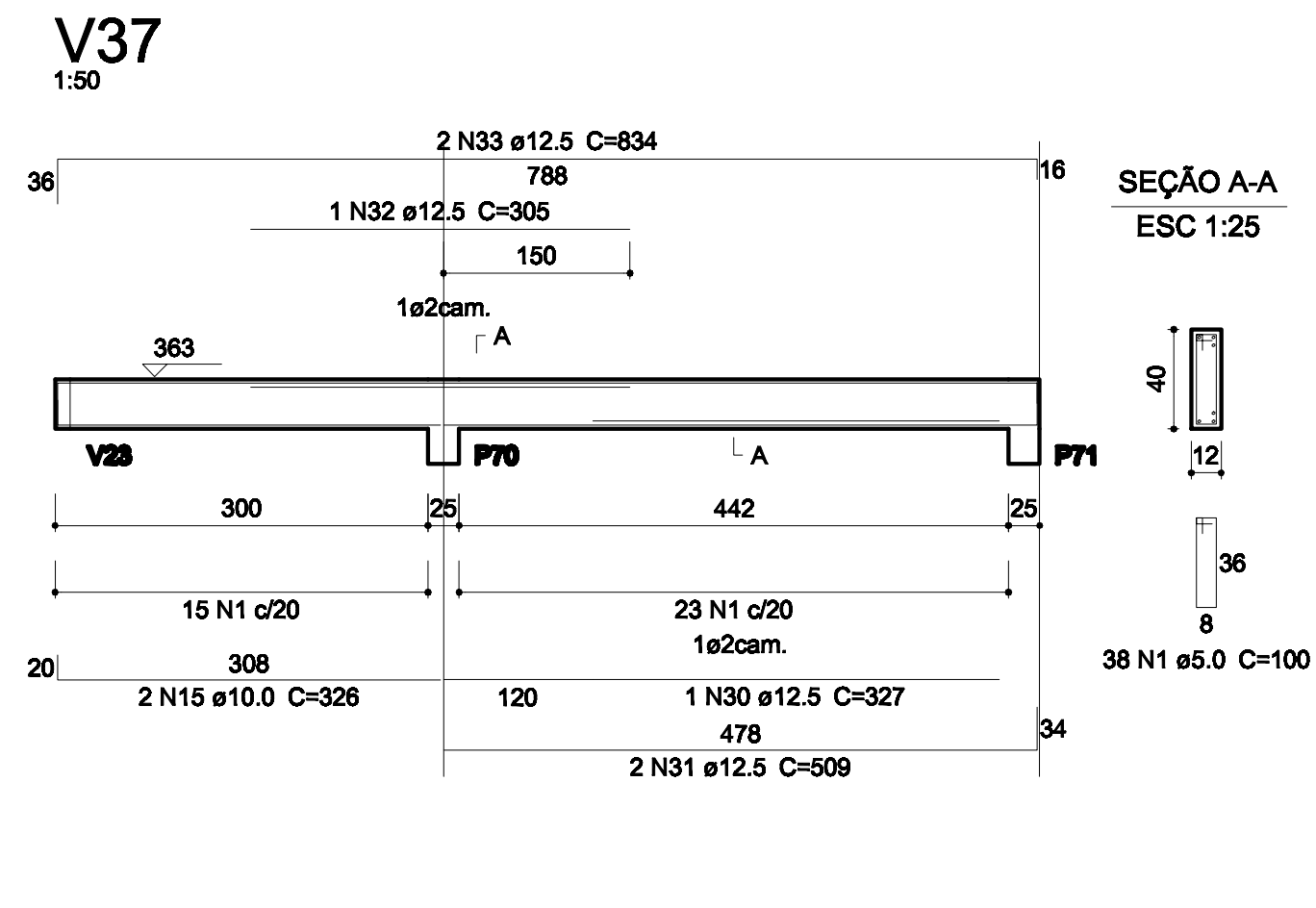
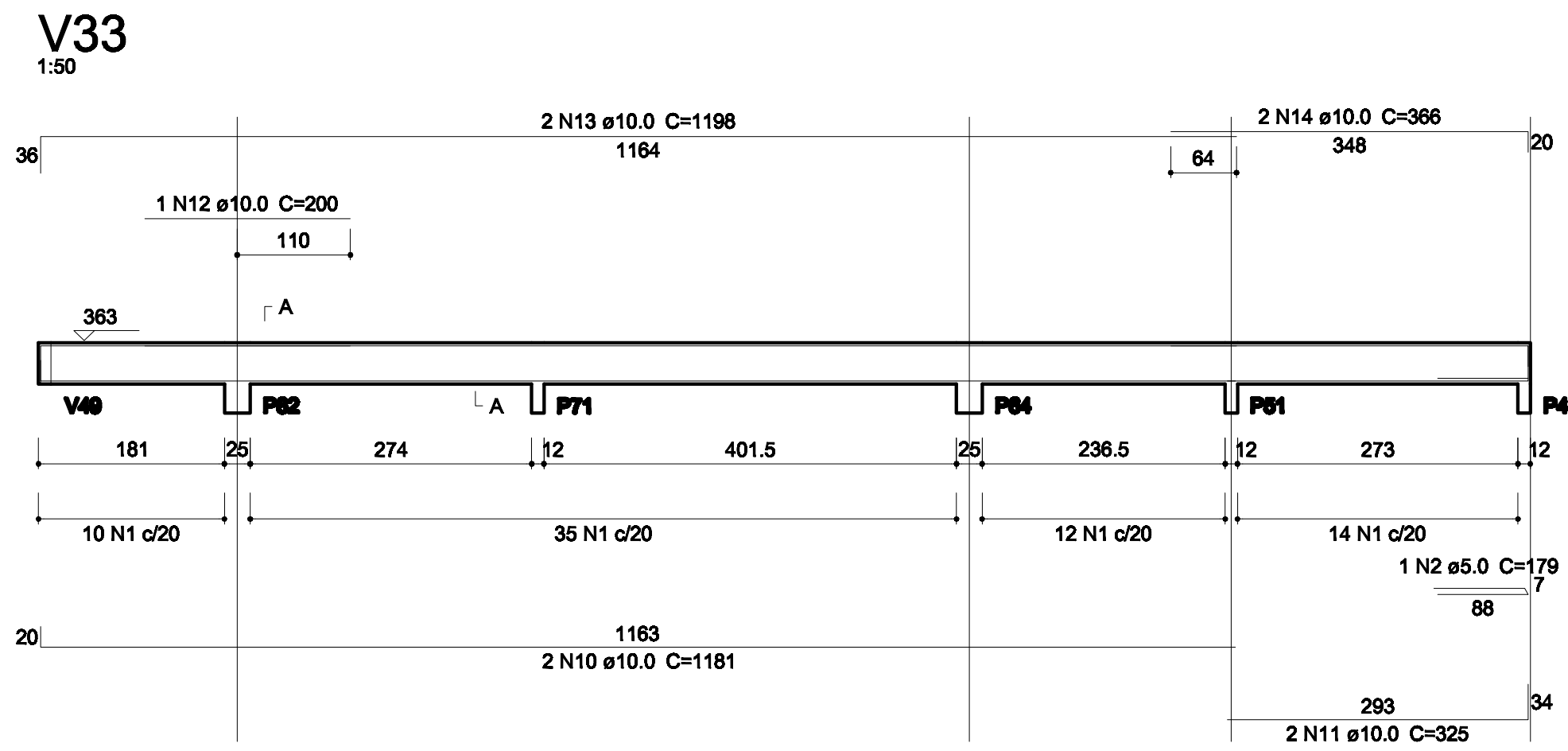


Relação do aço

AÇO	N	DIAM	Q	UNIT (cm)	C.TOTAL (cm)
CA60	1	5.0	516	100	51600
	2	5.0	4	179	716
	3	5.0	2	488	976
CA50	4	10.0	2	641	1282
	5	10.0	2	1052	2104
	6	10.0	2	192	384
	7	10.0	2	1191	2382
	8	10.0	6	611	3666
	9	10.0	2	599	1198
	10	10.0	2	1181	2362
	11	10.0	2	325	650
	12	10.0	1	200	200
	13	10.0	2	1198	2396
	14	10.0	2	366	732
	15	10.0	2	326	652
	16	10.0	2	580	1160
	17	10.0	4	1000	4000
	18	10.0	2	1060	2120
	19	10.0	1	255	255
	20	10.0	2	290	580
	21	10.0	1	350	350
	22	10.0	4	1198	4792
	23	10.0	2	906	1812
	24	10.0	4	583	2332
	25	10.0	2	819	1638
	26	10.0	2	788	1576
	27	10.0	1	275	275
	28	10.0	2	1200	2400
	29	10.0	2	327	654
	30	12.5	1	327	327
	31	12.5	2	509	1018
	32	12.5	1	305	305
	33	12.5	2	834	1668
	34	12.5	1	385	385
	35	12.5	2	550	1100
	36	16.0	1	450	450
	37	16.0	2	667	1334



Resumo do aço

AÇO	DIAM	C.TOTAL (m)	PESO (kg)
CA50	10.0	419.6	258.6
	12.5	48.1	46.3
	16.0	17.9	28.2
CA60	5.0	533	82.1
PESO TOTAL			
CA50		333.1	
CA60		82.1	

Vol. de concreto total (C-20) = 5.12 m³
Área de forma total = 98.15 m²

