

Relação do aço

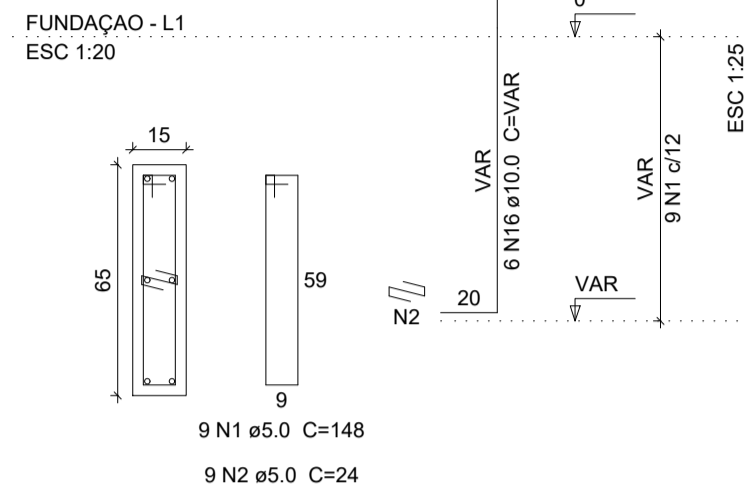
4xS38 S54 S86	S40 S61 S89	S43 2xS73	AÇO	N	DIAM	Q	UNIT (cm)	C.TOTAL (cm)
CA60	1	5.0	63	148	9324			
	2	5.0	135	24	3240			
	3	5.0	18	158	2844			
	4	5.0	18	78	1404			
	5	5.0	9	66	594			
	6	5.0	36	98	3528			
	7	6.3	26	149	3874			
	8	6.3	12	139	1668			
	9	8.0	48	188	9024			
	10	8.0	70	198	13860			
	11	8.0	14	158	2212			
	12	8.0	25	148	3700			
	13	8.0	14	133	1852			
	14	8.0	26	123	3198			
	15	8.0	11	113	1243			
	16	10.0	94	VAR	VAR			
	17	10.0	68	137	9316			
	18	10.0	22	142	3124			
	19	10.0	15	147	2205			
	20	10.0	10	172	1720			
	21	12.5	65	141	9165			

Resumo do aço

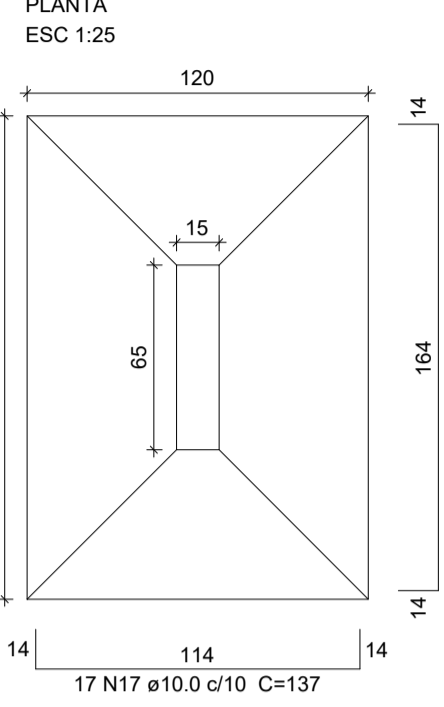
AÇO	DIAM	C.TOTAL (m)	PESO (kg)
CA50	6.3	55.5	13.6
	8.0	351	138.5
	10.0	310.3	191.3
	12.5	91.7	88.3
CA60	5.0	209.4	32.3
PESO TOTAL			
CA50		431.7	
CA60		32.3	

Vol. de concreto total (C-25) = 9.43 m³
Área de forma total = 39.26 m²

P37=P38=P39=P64

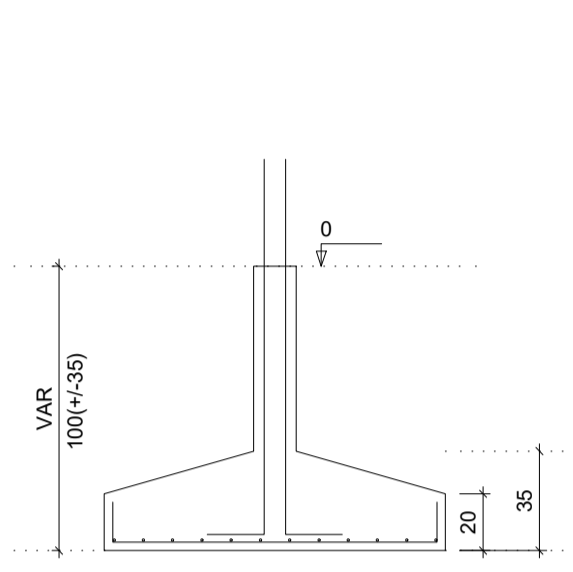


S37=S38=S39=S64

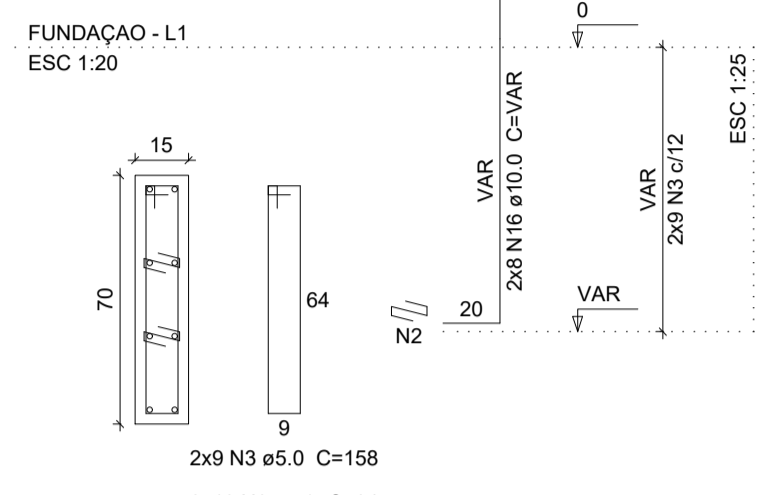


Solo com capacidade de suporte > 1.00 kgf/cm²
Solo compactado sobre a sapata
peso específico > 1600.00 kgf/m³

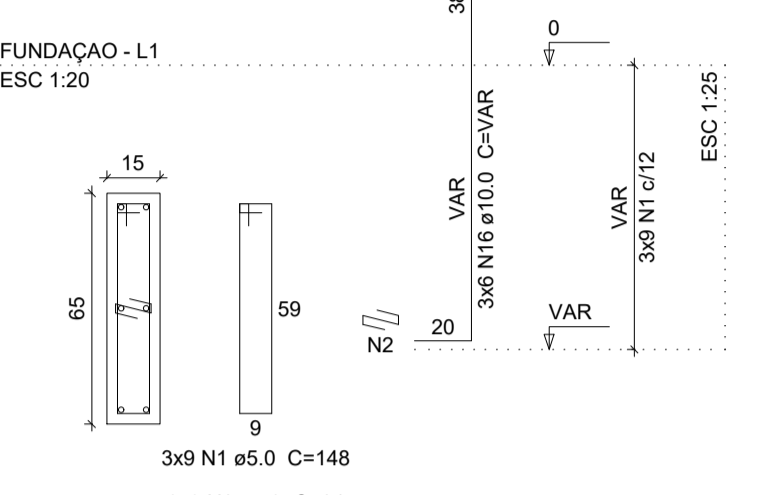
CORTE ESC 1:25



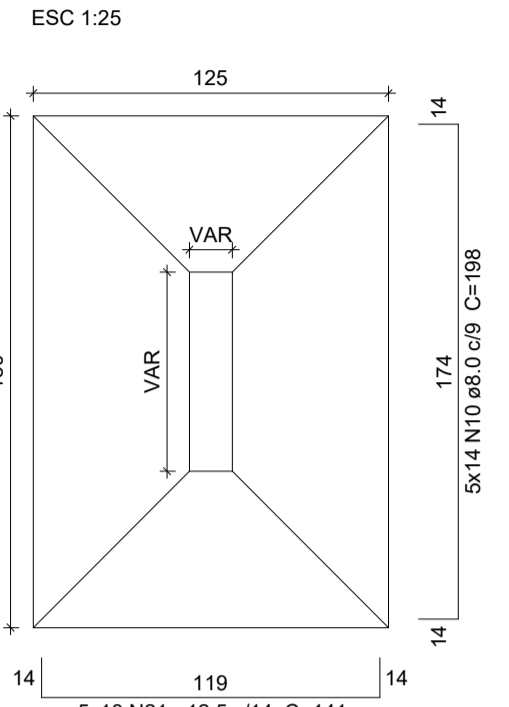
P40=P41



P65=P66=P67

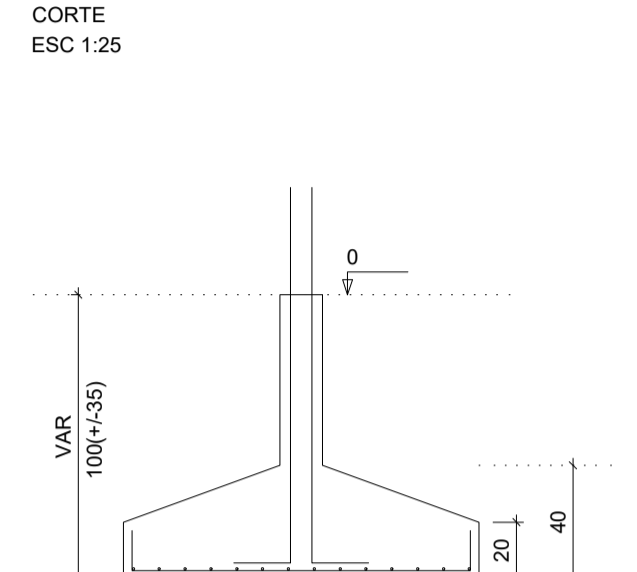


S40=S41=S65=S66=S67

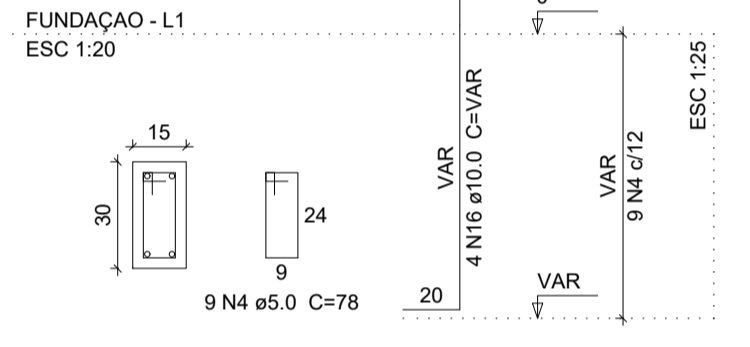


Solo com capacidade de suporte > 1.00 kgf/cm²
Solo compactado sobre a sapata
peso específico > 1600.00 kgf/m³

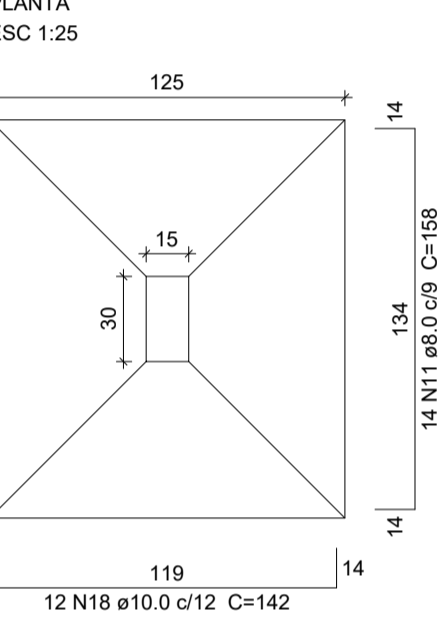
CORTE ESC 1:25



P43

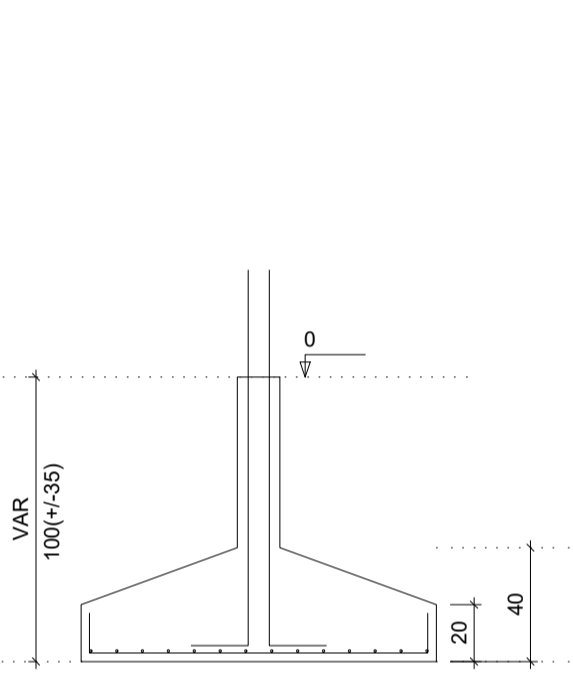


S43

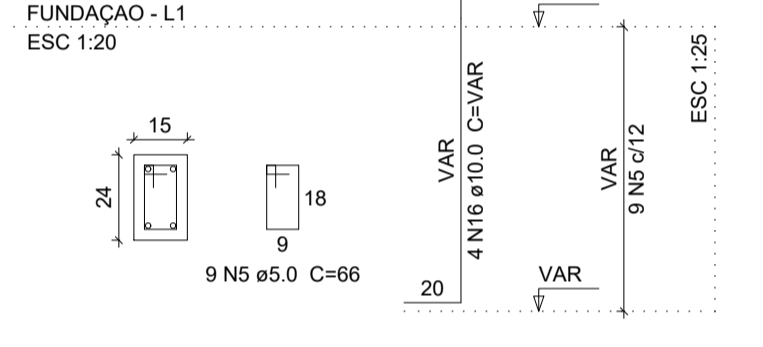


Solo com capacidade de suporte > 1.00 kgf/cm²
Solo compactado sobre a sapata
peso específico > 1600.00 kgf/m³

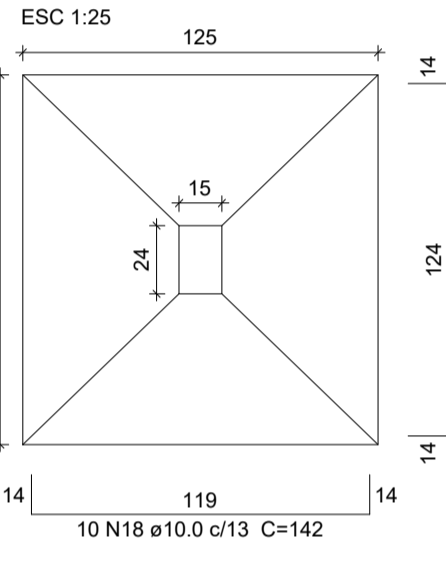
CORTE ESC 1:25



P54

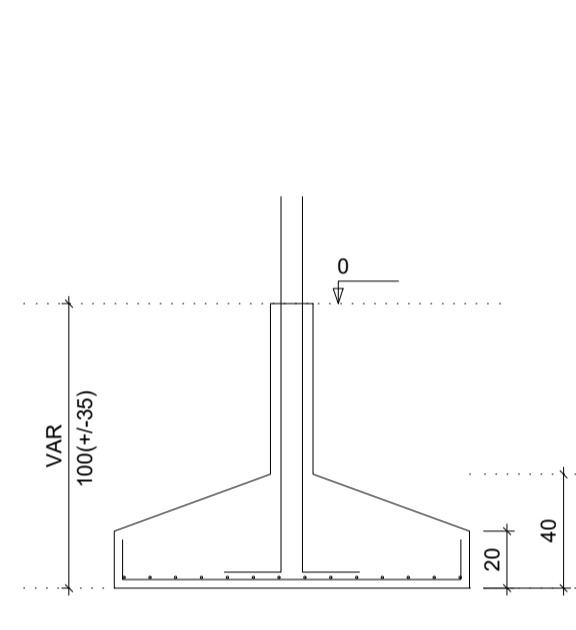


S54

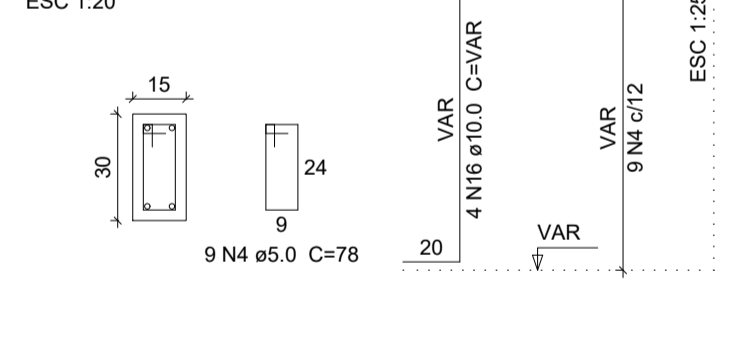


Solo com capacidade de suporte > 1.00 kgf/cm²
Solo compactado sobre a sapata
peso específico > 1600.00 kgf/m³

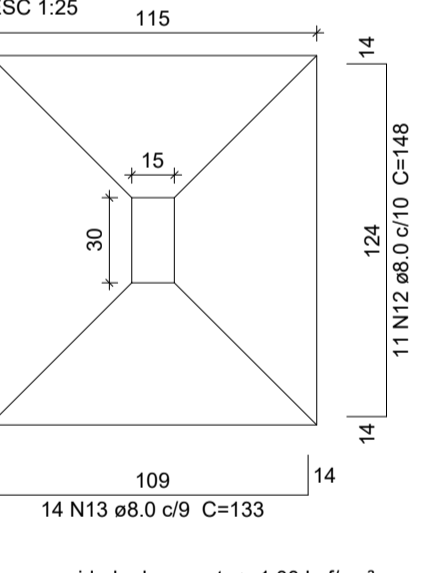
CORTE ESC 1:25



P61

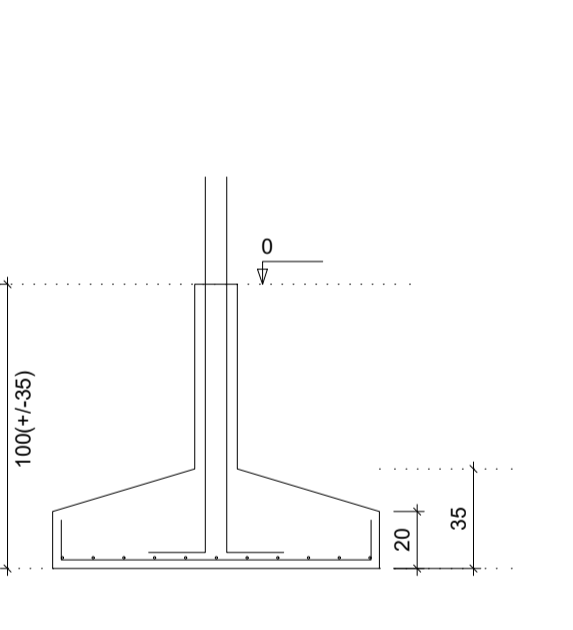


S61

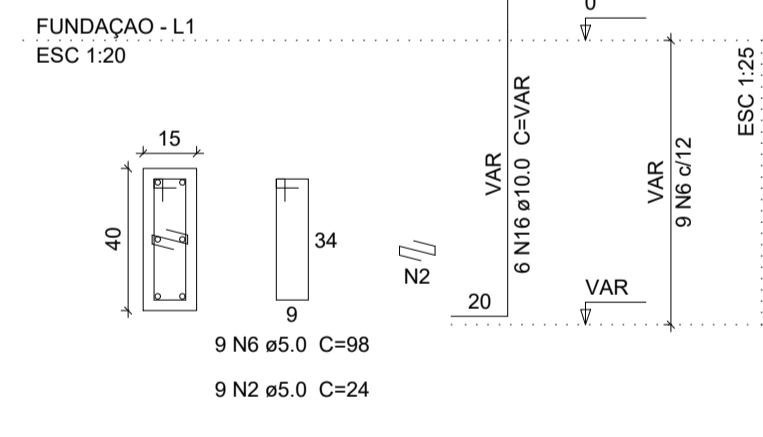


Solo com capacidade de suporte > 1.00 kgf/cm²
Solo compactado sobre a sapata
peso específico > 1600.00 kgf/m³

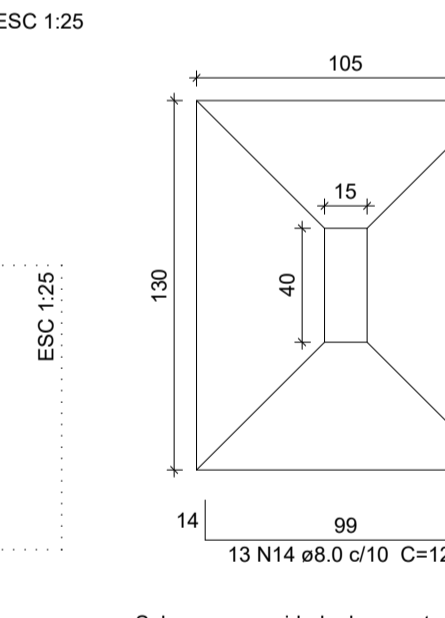
CORTE ESC 1:25



P73=P90

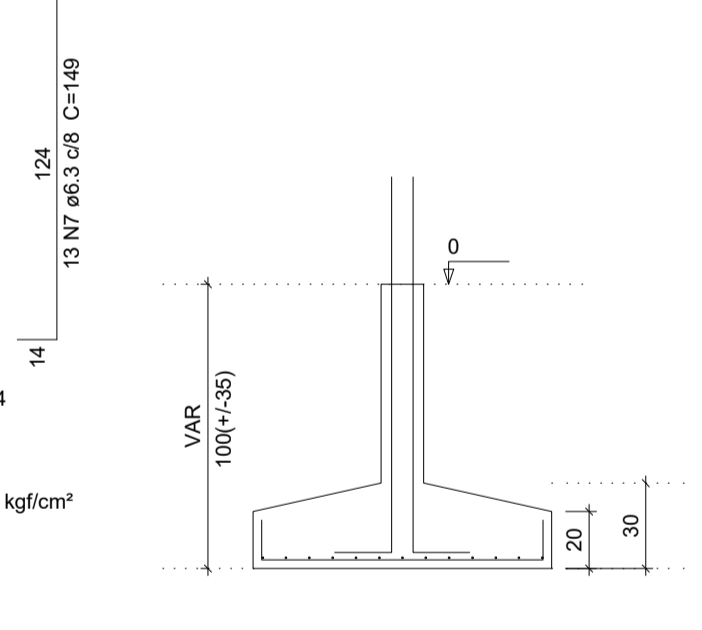


S73=S90

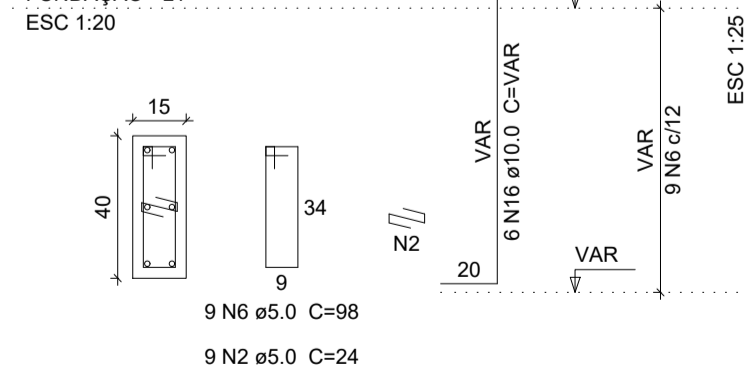


Solo com capacidade de suporte > 1.00 kgf/cm²
Solo compactado sobre a sapata
peso específico > 1600.00 kgf/m³

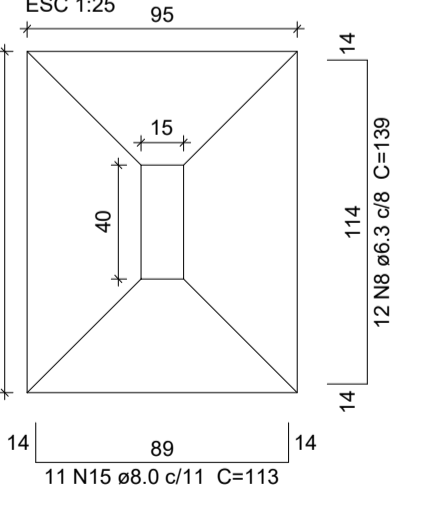
CORTE ESC 1:25



P86

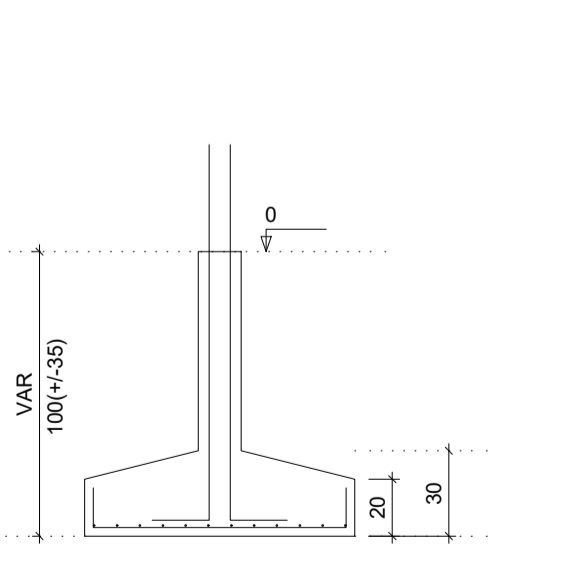


S86

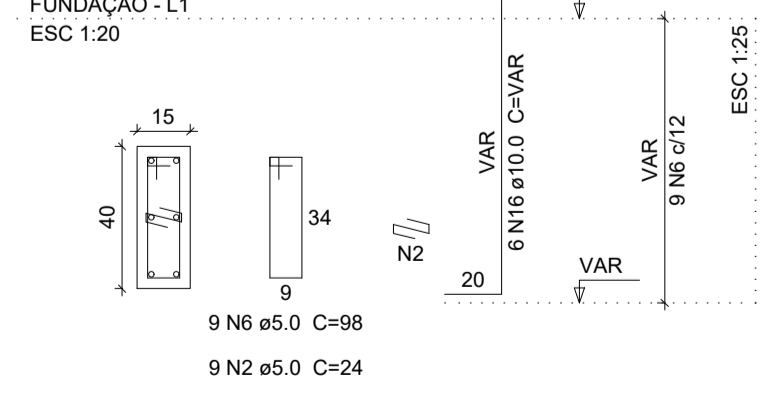


Solo com capacidade de suporte > 1.00 kgf/cm²
Solo compactado sobre a sapata
peso específico > 1600.00 kgf/m³

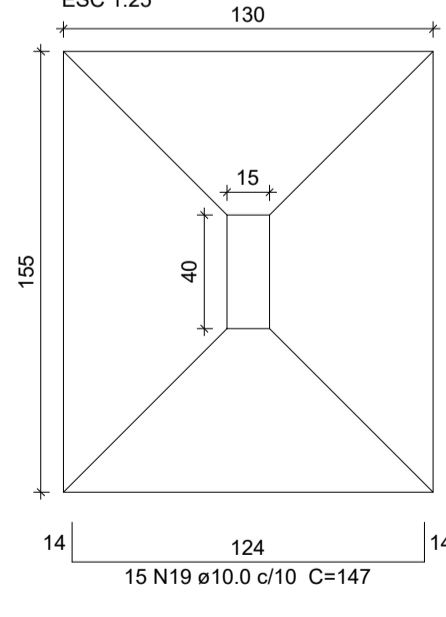
CORTE ESC 1:25



P89

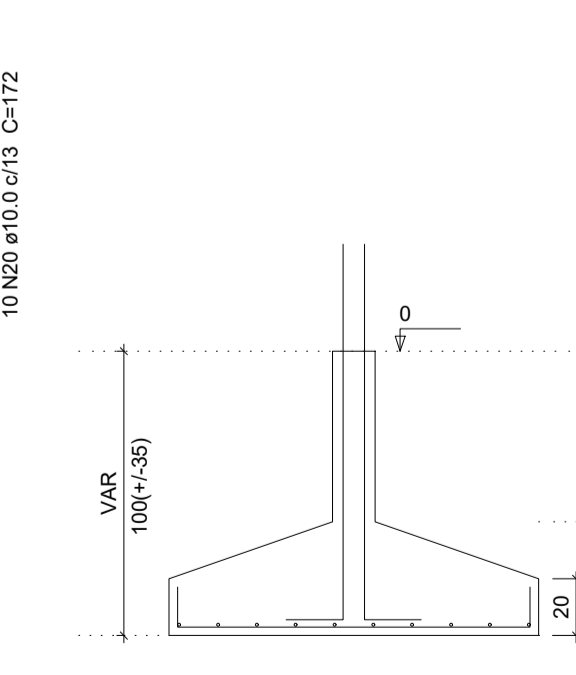


S89



Solo com capacidade de suporte > 1.00 kgf/cm²
Solo compactado sobre a sapata
peso específico > 1600.00 kgf/m³

CORTE ESC 1:25



SECOMP - SECRETARIA DE OBRAS, MOBILIDADE E SERVIÇOS PÚBLICOS

PROJETO: CSF- CAMPO DOS VELHOS
PROJETO ESTRUTURAL

INTERESSADO: PREFEITURA DE SOBRAL
ENDEREÇO: BAIRRO CAMPO DOS VELHOS
MUNICÍPIO: SOBRAL-CE

AUTOR: ENG. CARLOS EDUARDO BRATZ
CREA - 321948

PREFEITURA DE SOBRAL

SAPATAS - FUNDAÇÃO

INDICADA

DATA: MAIO/2019

REVISÃO

ARQUIVO

PRCHA: 03/22

OR	PEÇA
1	0.10
2	0.20
3	0.30
4	0.40
5	0.50
6	0.80
7	0.30
SOLDAÇA	
8	0.10
9	0.09
10	0.10