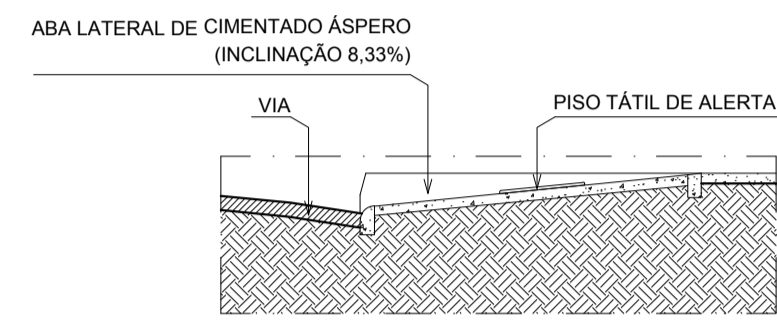
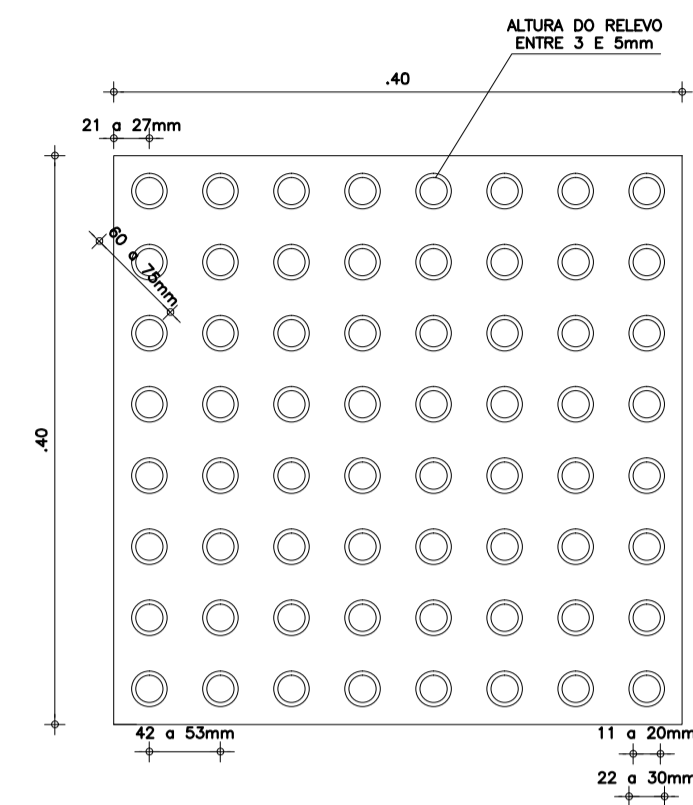


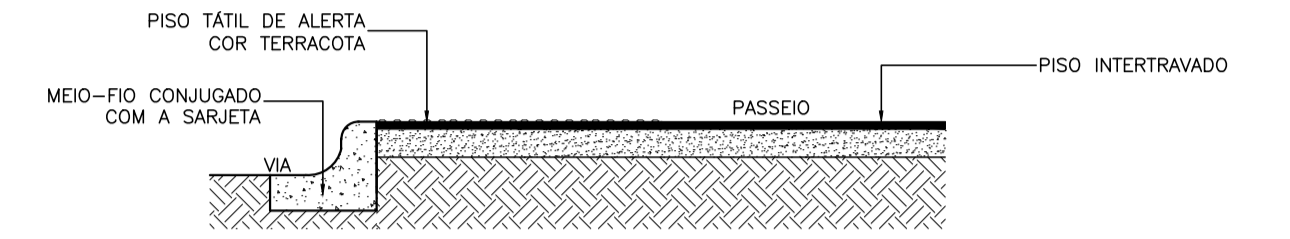
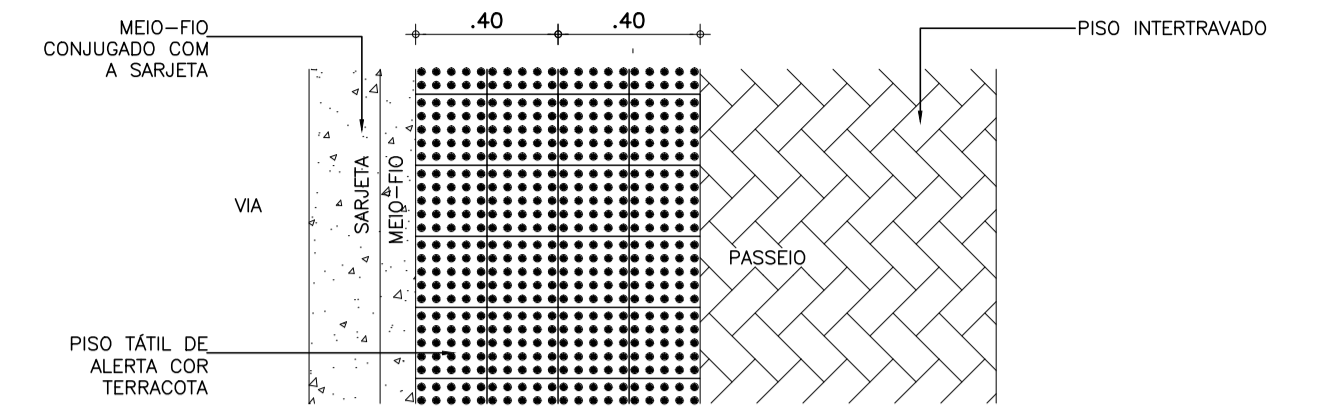
1 DET. RAMPA
ESCALA 1:25



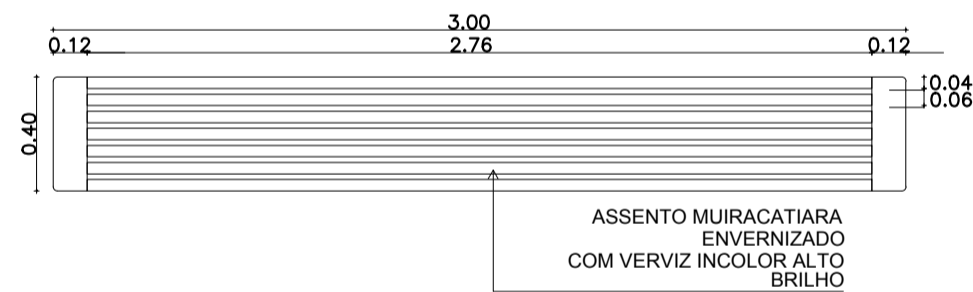
2 DET. VISTA LATERAL RAMPA
ESCALA 1:25



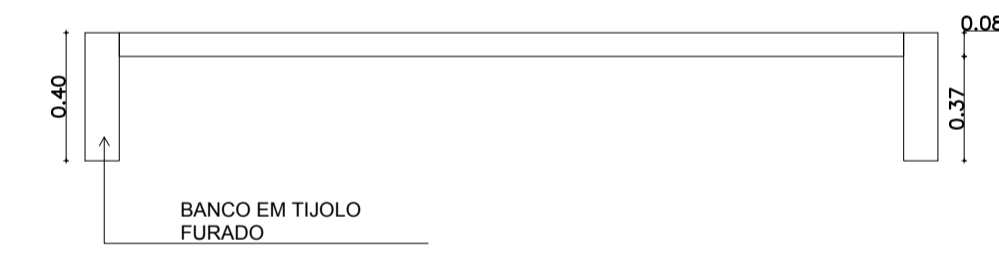
3 DET. PISO DE ALERTA
ESCALA 1:5



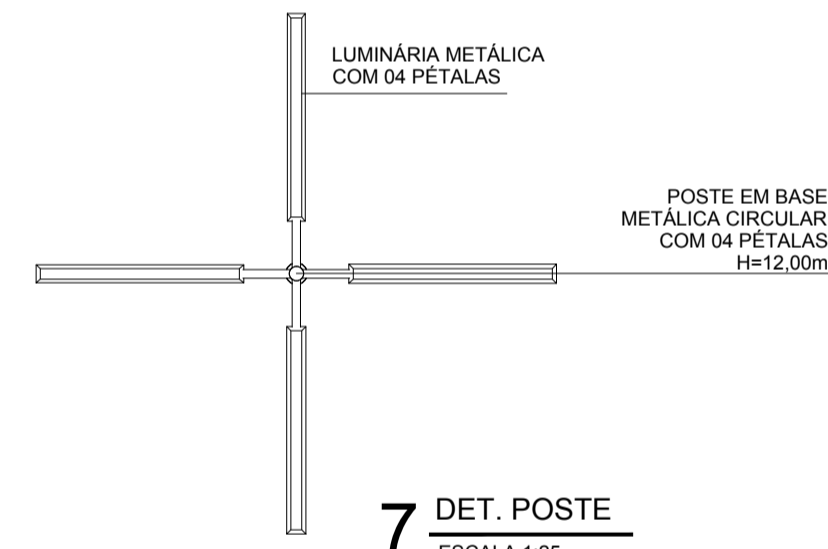
4 DET. PASSEIO
ESCALA 1:20



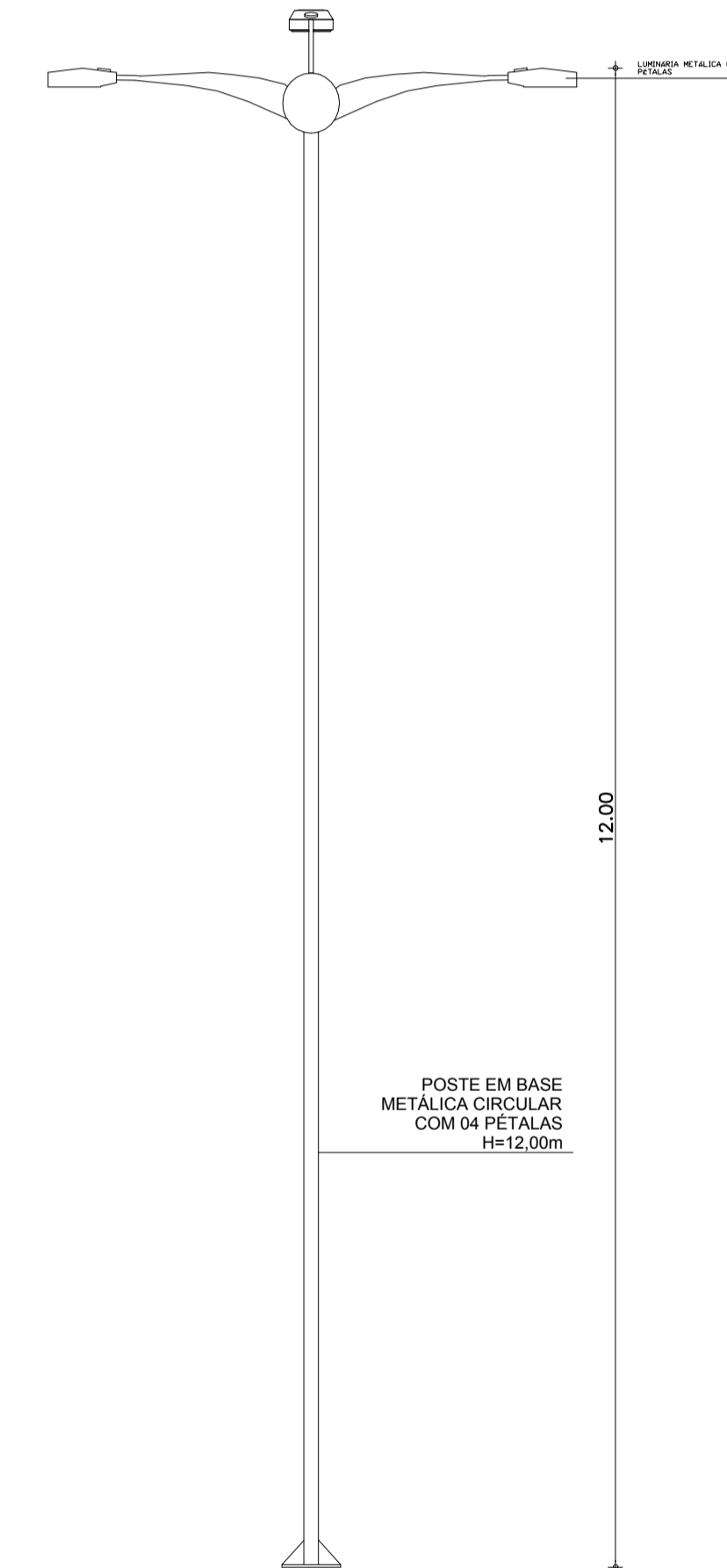
5 DET. BANCO
ESCALA 1:25



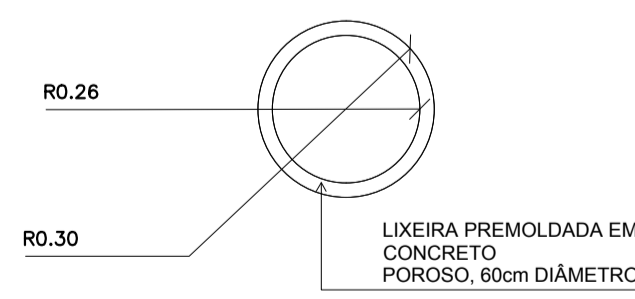
6 DET. BANCO
ESCALA 1:25



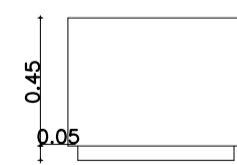
7 DET. POSTE
ESCALA 1:25



8 DET. POSTE
ESCALA 1:25



9 DET. LIXEIRA
ESCALA 1:25



10 DET. LIXEIRA
ESCALA 1:25

COR PENA	
- 1	0.10
- 2	0.20
- 3	0.30
- 4	0.40
- 5	0.50
- 6	0.80
- 7	0.30
COLORIDA	
- 8	0.10
- 9	0.09
- 10	0.10

SECOMP - SECRETARIA DE OBRAS, MOBILIDADE E SERVIÇOS PÚBLICOS

PROJETO: **PROJETO ARQUITETÔNICO PRAÇA SABONETE - CARACARÁ - SOBRAL**

INTERESSADO: **PREFEITURA DE SOBRAL** AUTOR: **TAIS ALBUQUERQUE RIOS**

ENDEREÇO: **RUA S.D.O. - CARACARÁ** AUTOR: **NADINE SIQUEIRA**

MUNICÍPIO: **SOBRAL**

DESENHOS DA FRANCHA	ESCALA
DET. RAMPA	1:25
DET. PISO DE ALERTA	1:5
DET. PASSEIO	1:20
DET. BANCO	1:25
DET. POSTE	1:25
DET. LIXEIRA	1:25

DATA: JUL/2017 REVISÃO: JUL/2017 ARQUIVO: PR_01_02 **ARQ 03/03**