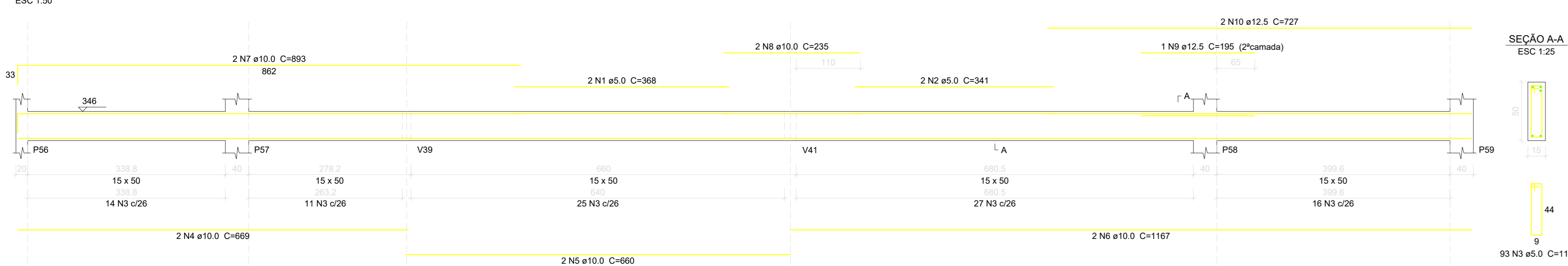
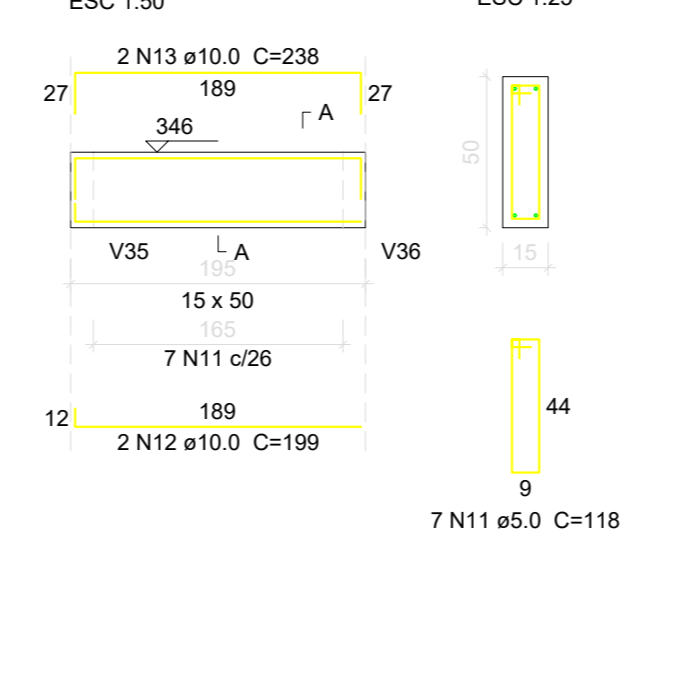


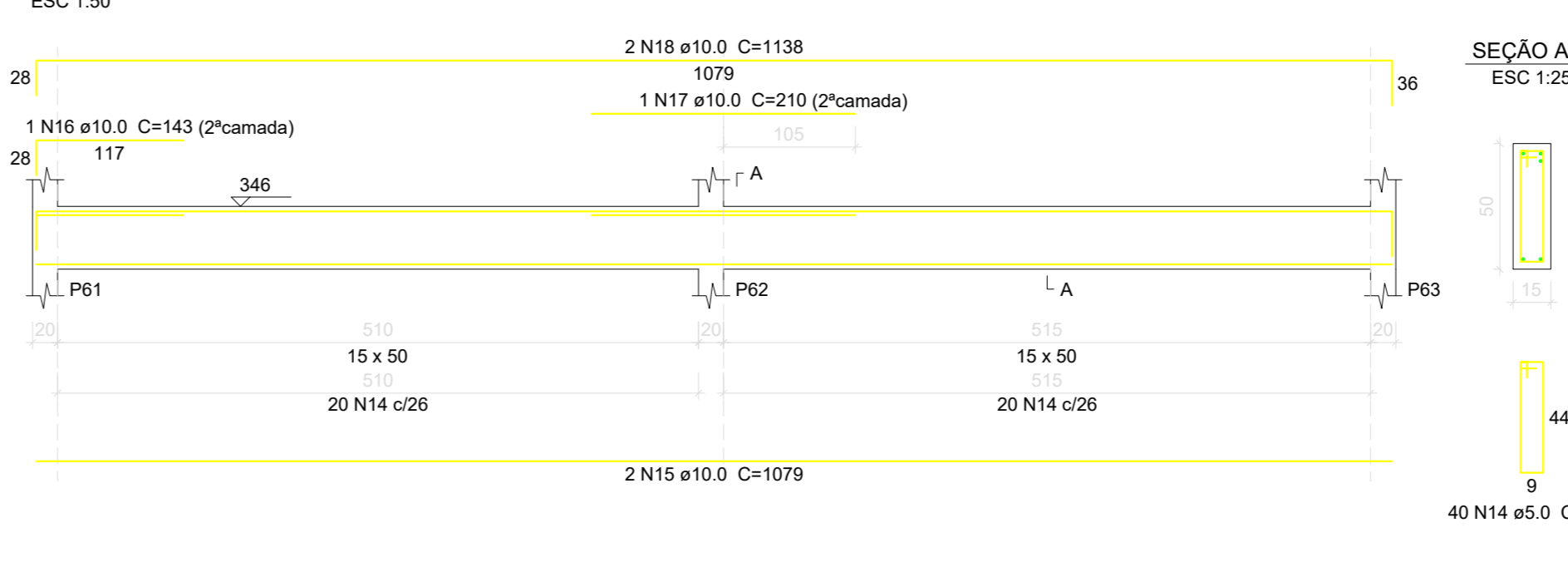
V23 (15 x 50)



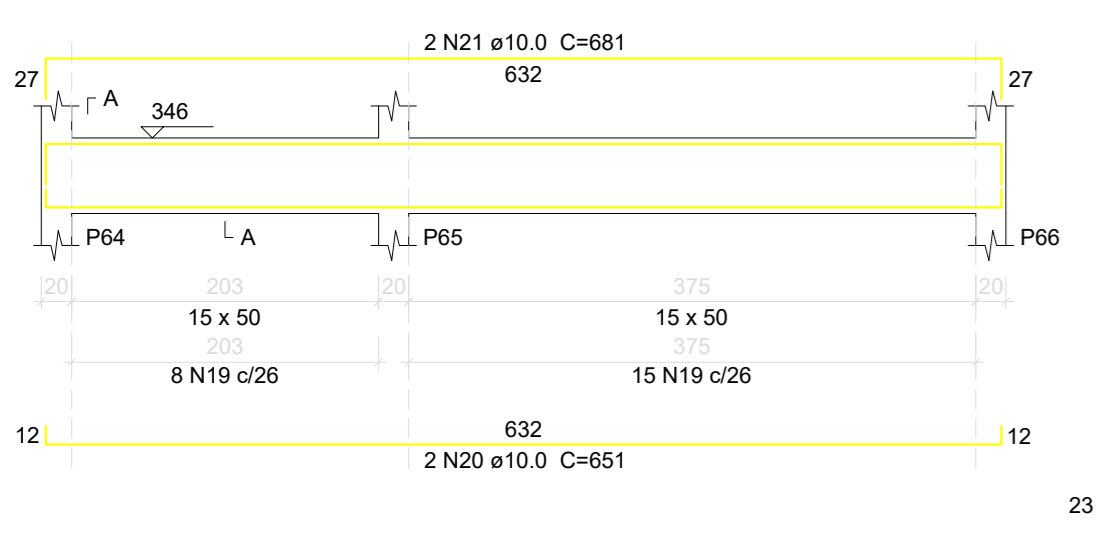
V24 (15 x 50)



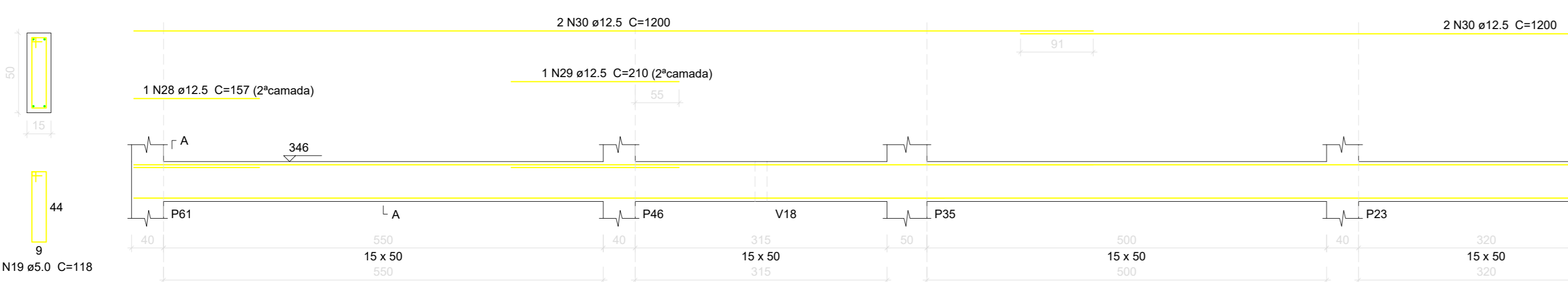
V25 (15 x 50)



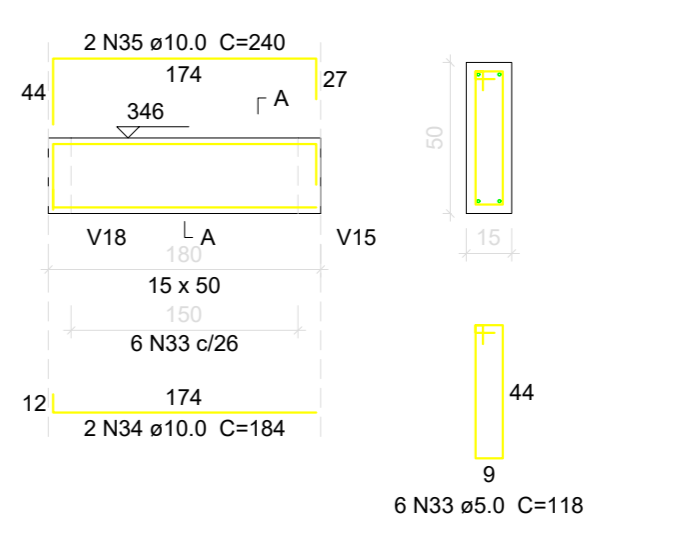
V26 (15 x 50)



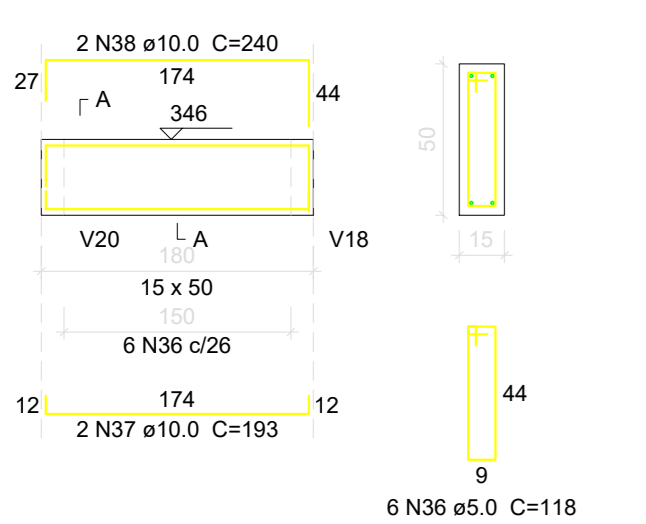
V27 (15 x 50)



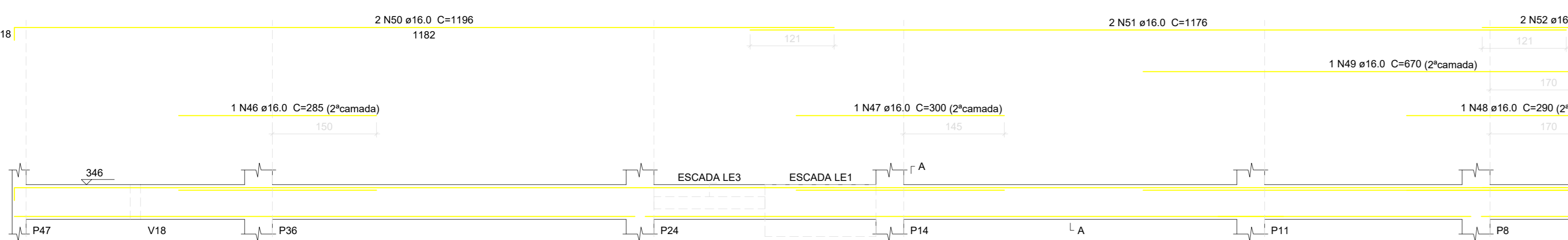
V28 (15 x 50)



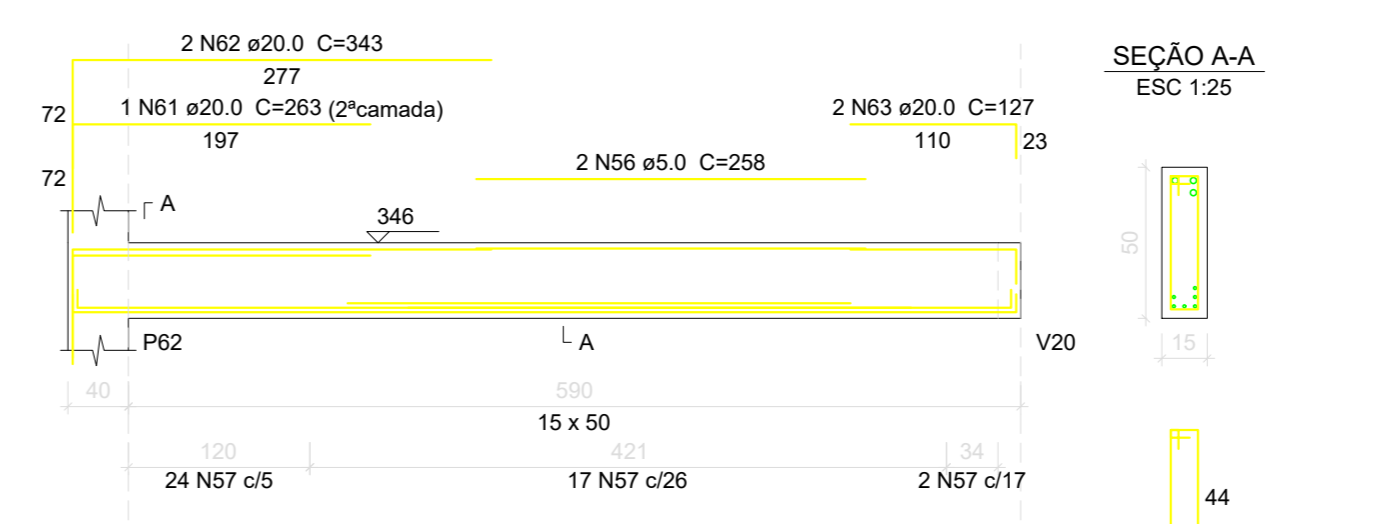
V29 (15 x 50)



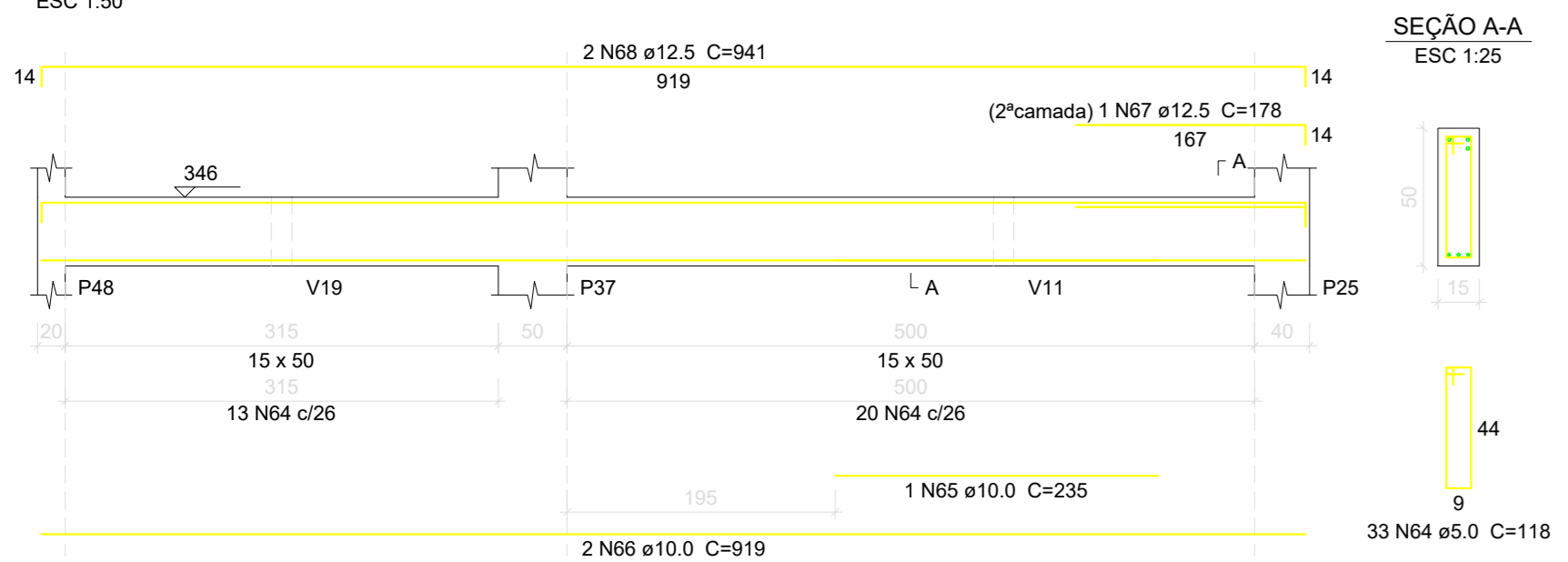
V30 (var)



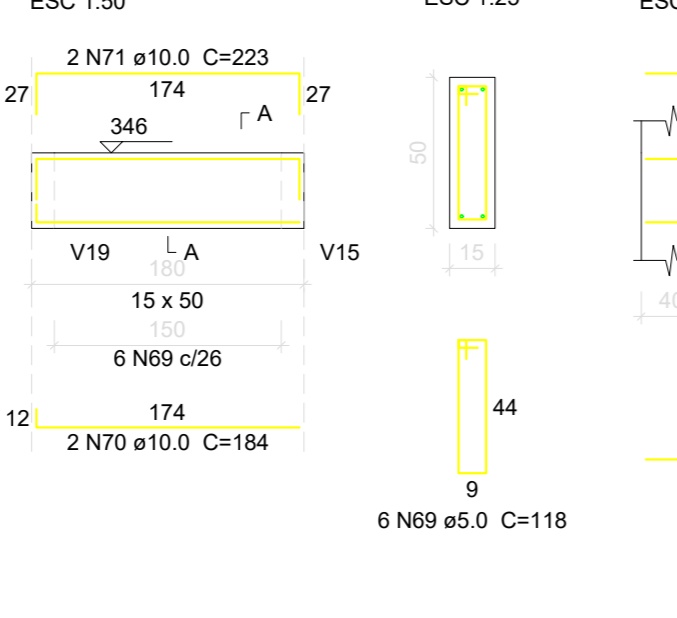
V31 (15 x 50)



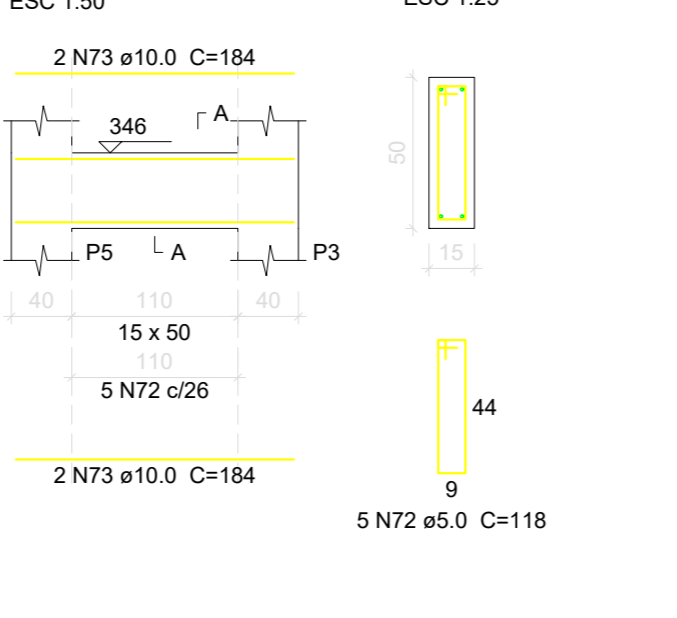
V32 (15 x 50)



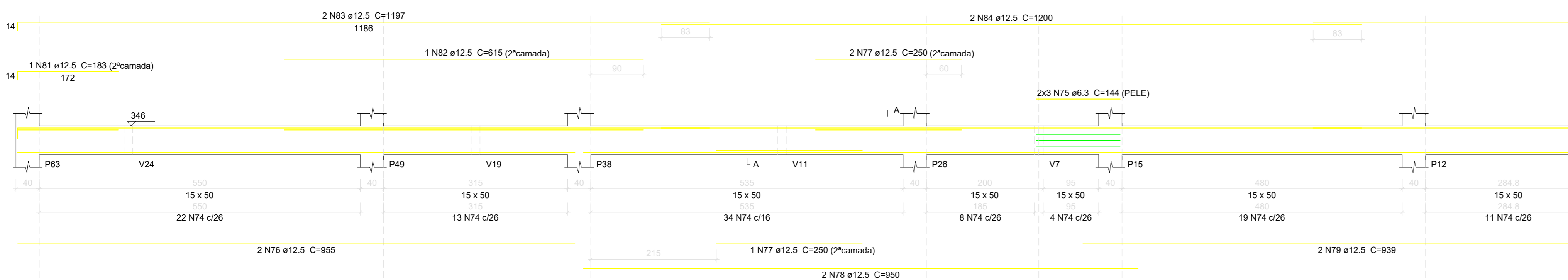
V33 (15 x 50)



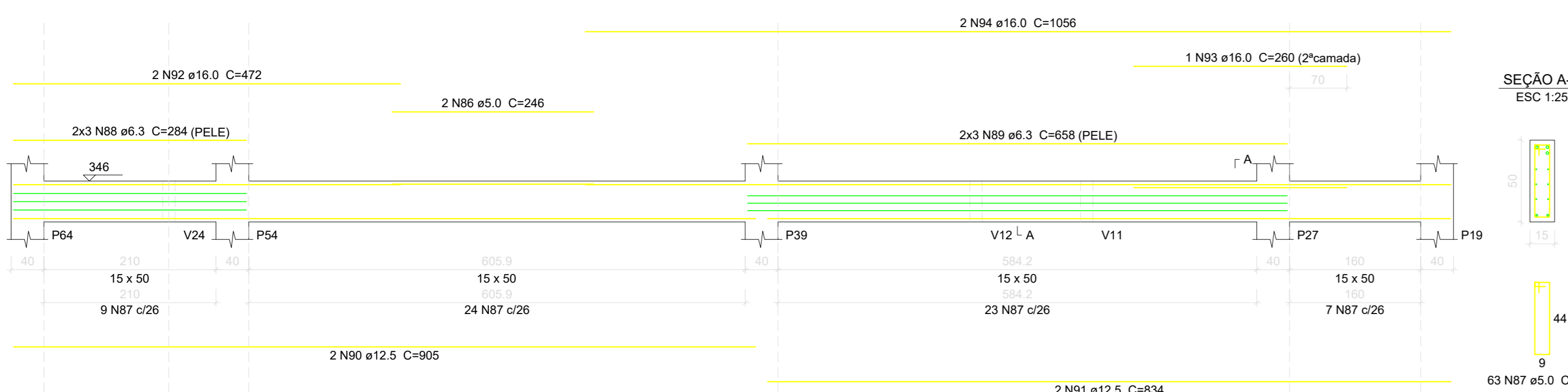
V34 (15 x 50)



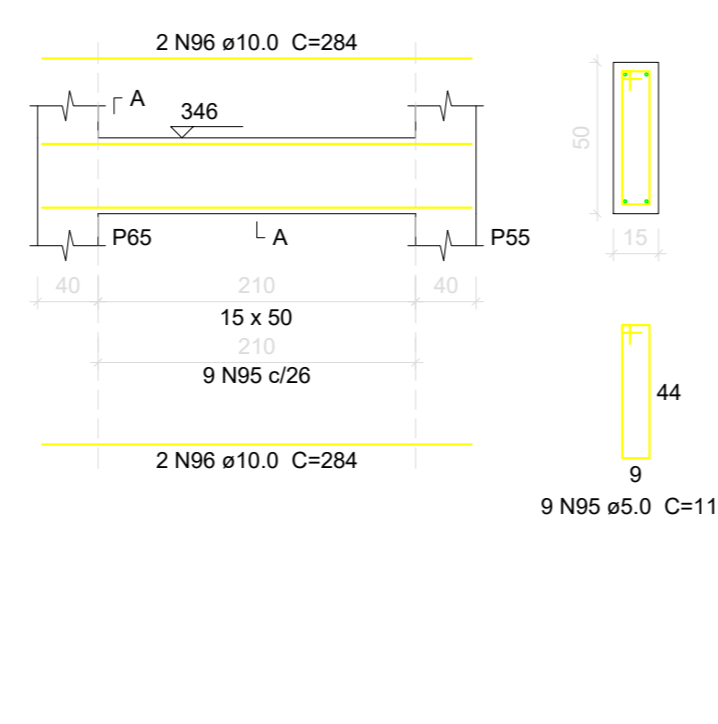
V35 (15 x 50)



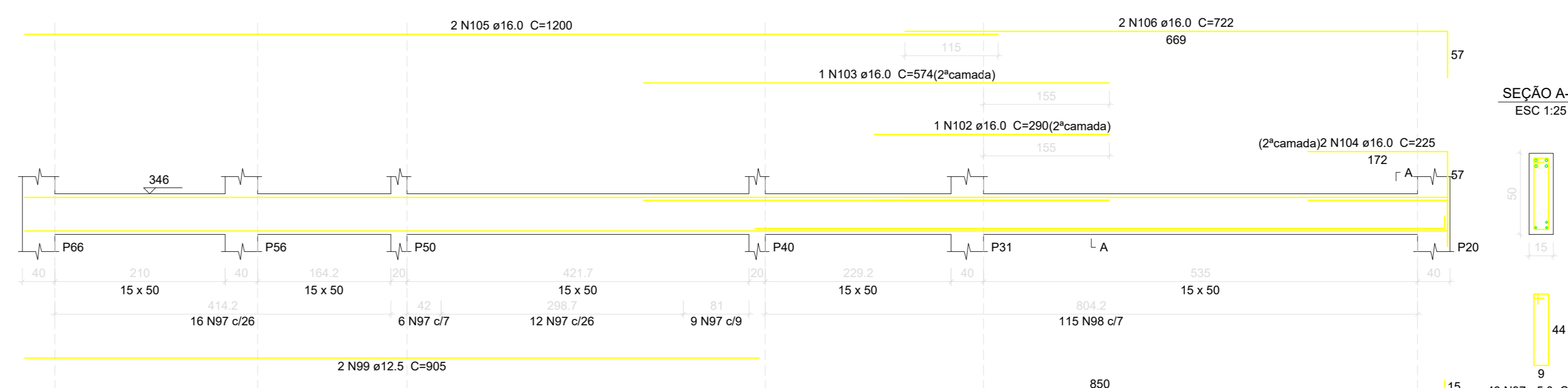
V36 (15 x 50)



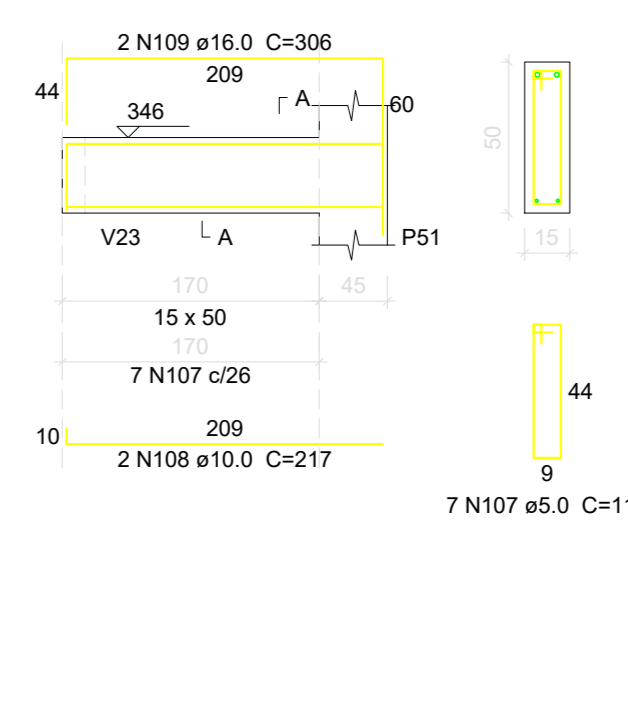
V37 (15 x 50)



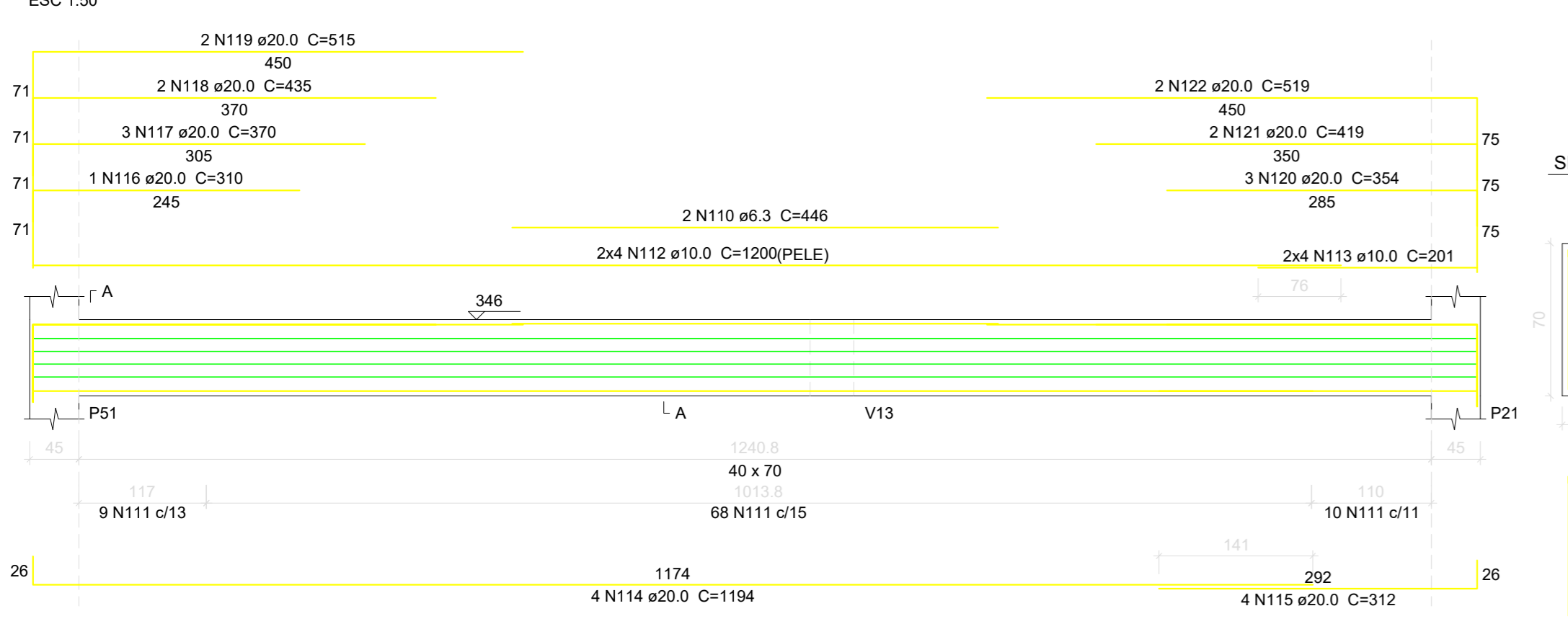
V38 (15 x 50)



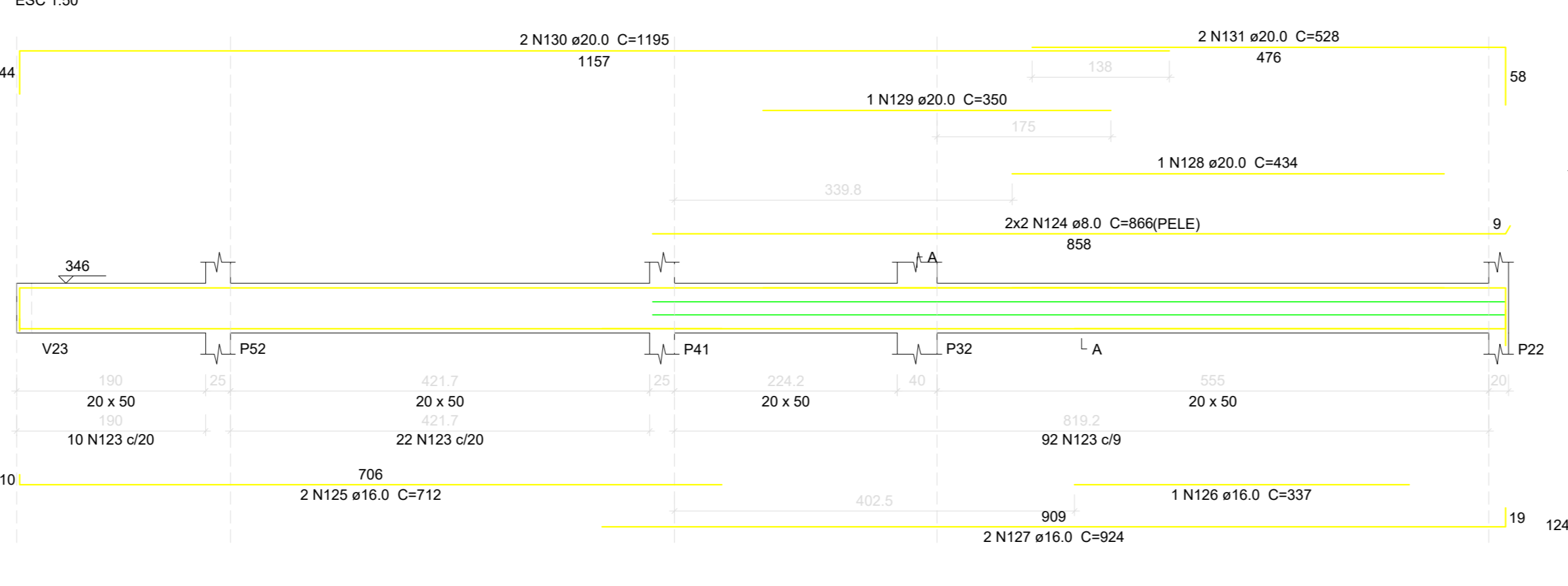
V39 (15 x 50)



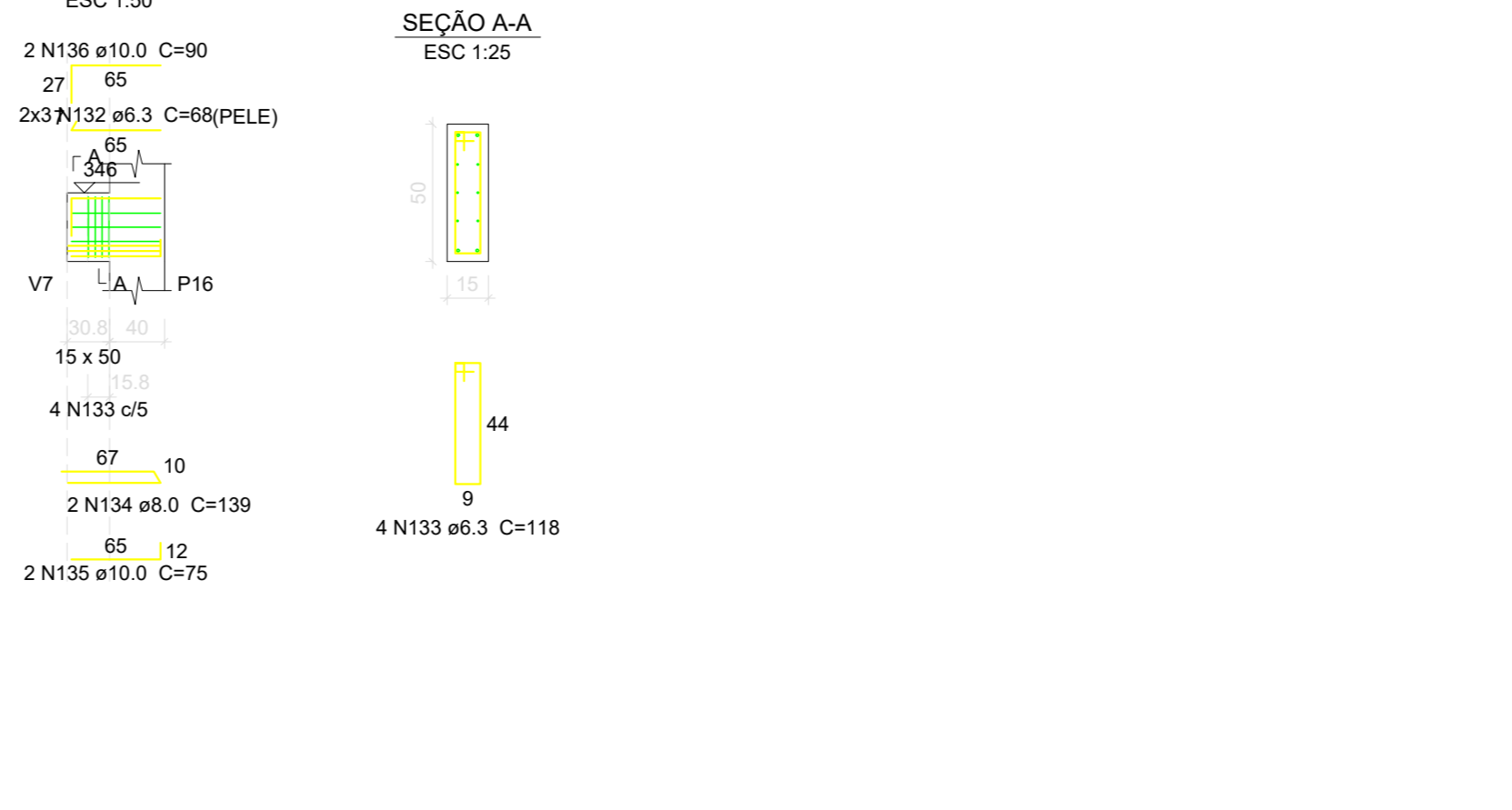
V40 (40 x 70)



V41 (20 x 50)



V42 (15 x 50)



Relação do aço

Table with columns: ELEMENTO, AÇO, N, DIAM (mm), QUANT, C.UNIT (cm), C.TOTAL (cm). Lists reinforcement details for beams V23 through V42.

Resumo do aço

Summary table for steel reinforcement: AÇO, DIAM (mm), C.TOTAL (m), PESO (kg). Includes total weight and area of formwork.

A & V PROJETOS DE ENGENHARIA

Project information form: PROJETO: PROJETO ESTRUTURAL HOSPITAL DR ESTEVAM; INTERESSADO: PREFEITURA DE SOBRAL; ENDEREÇO: -; MUNICÍPIO: SOBRAL-CE.