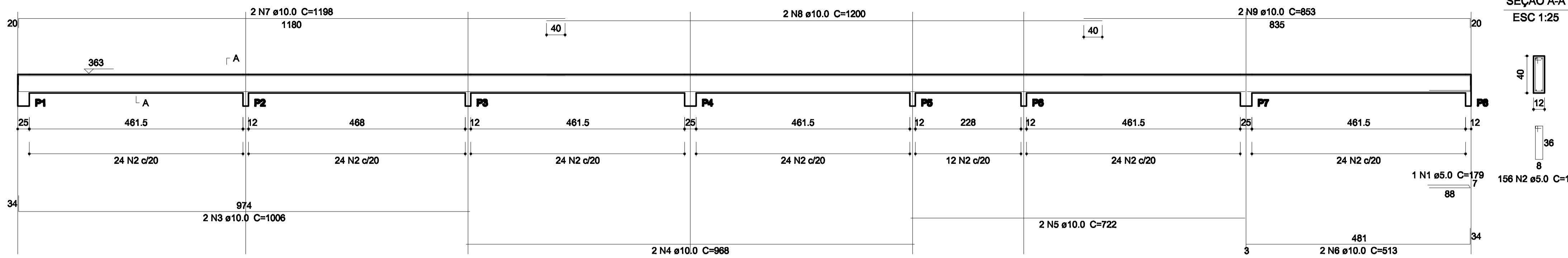


V1
1:50



SEÇÃO A-A
ESC 1:25

Relação do aço

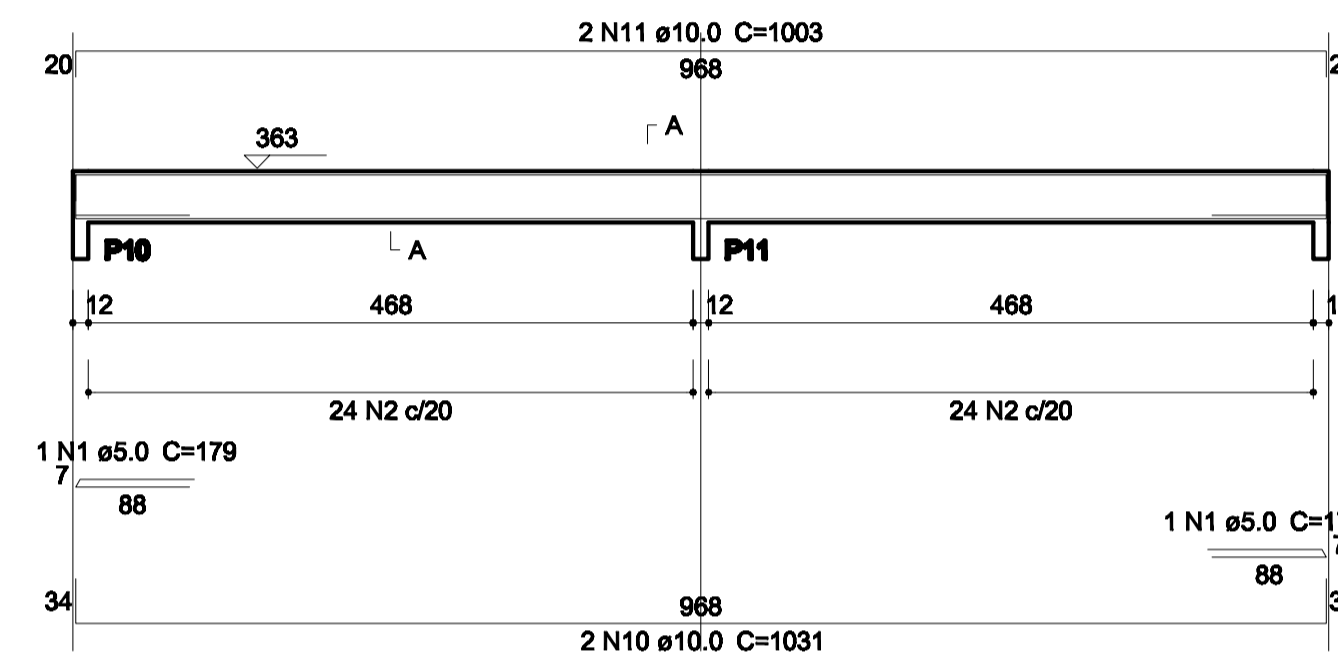
AÇO	N	DIAM	Q	UNIT (cm)	C.TOTAL (cm)
CA60	1	5.0	5	179	895
CA50	2	5.0	611	100	61100
	3	10.0	2	1006	2012
	4	10.0	4	968	3872
	5	10.0	2	722	1444
	6	10.0	2	513	1026
	7	10.0	6	1198	7188
	8	10.0	6	1200	7200
	9	10.0	2	853	1706
	10	10.0	2	1031	2062
	11	10.0	2	1003	2006
	12	10.0	2	1060	2120
	13	10.0	2	178	356
	14	10.0	2	1046	2092
	15	10.0	2	194	388
	16	10.0	6	588	3516
	17	10.0	2	642	1284
	18	10.0	2	1000	2000
	19	10.0	2	714	1428
	20	10.0	2	521	1042
	21	10.0	2	912	1824
	22	10.0	2	813	1626
	23	10.0	2	781	1562
	24	10.0	2	1180	2360
	25	10.0	2	456	912
	26	10.0	2	399	798
	27	10.0	2	371	742
	28	16.0	1	346	346
	29	16.0	1	456	456
	30	16.0	3	662	1986

Resumo do aço

AÇO	DIAM	C.TOTAL (m)	PESO (kg)
CA50	10.0	525.7	324.1
	16.0	27.9	44
CA60	5.0	620	95.6
PESO TOTAL			
CA50		368.1	
CA60		95.6	

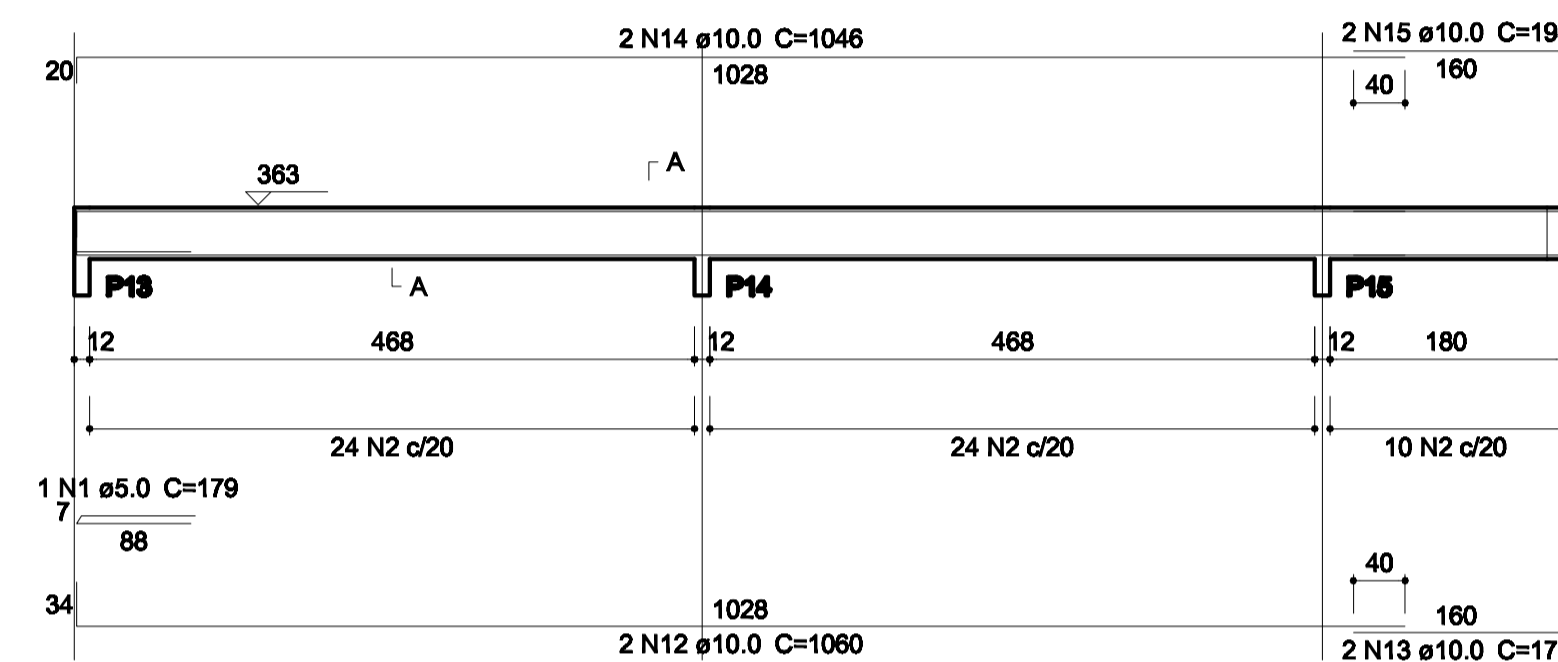
Vol. de concreto total (C-20) = 5.79 m³
Área de forma total = 110.83 m²

V2
1:50



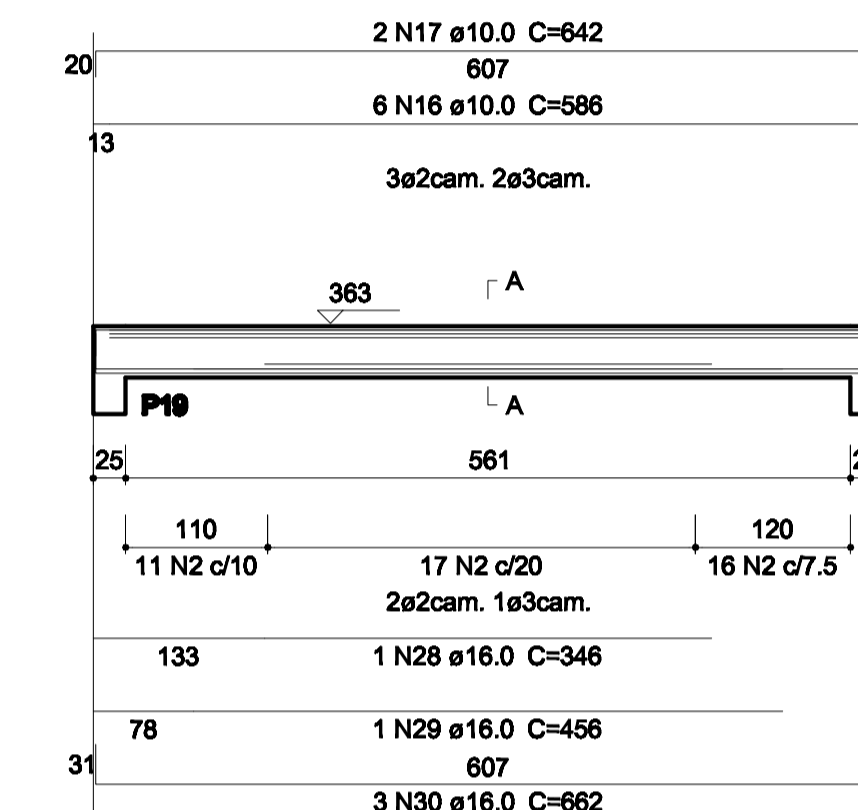
SEÇÃO A-A
ESC 1:25

V3
1:50



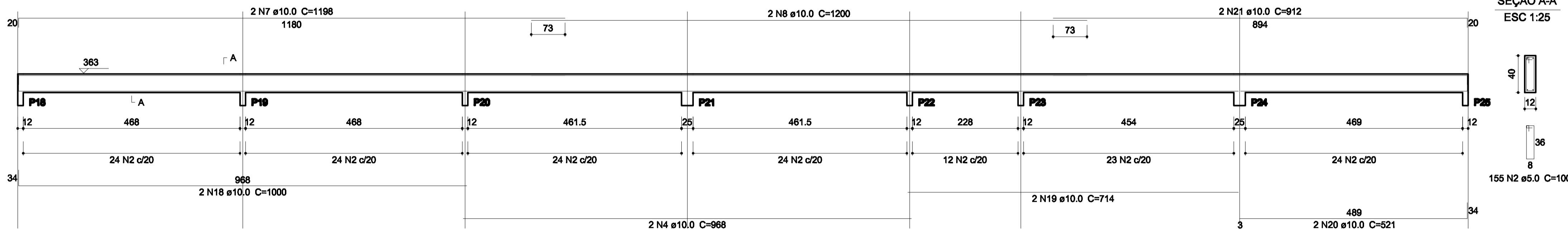
SEÇÃO A-A
ESC 1:25

V10
1:50



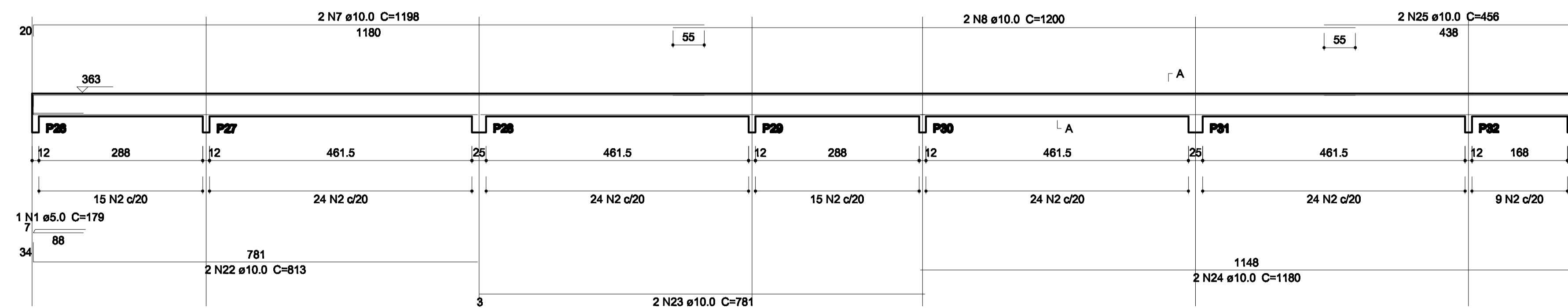
SEÇÃO A-A
ESC 1:25

V4
1:50



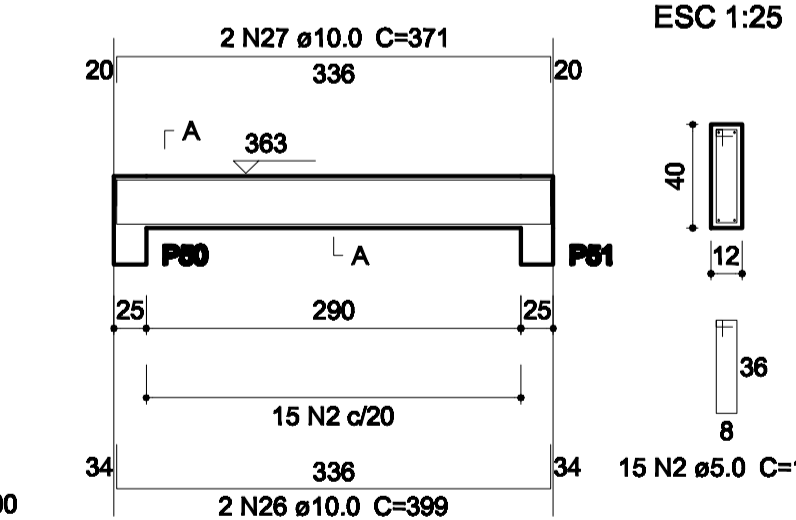
SEÇÃO A-A
ESC 1:25

V5
1:50



SEÇÃO A-A
ESC 1:25

V32
1:50



SEÇÃO A-A
ESC 1:25

PROPRIETÁRIO: PREFEITURA MUNICIPAL DE SOBRAL
OBRA/LOCAL: UNIDADE DE PRONTO ATENDIMENTO - UPA

FELIPE C. C. LEITE
Eng. Civil CREA : 13.292-D/CE
FONE: 3289-2825 / 9105-6629
e-mail : felipe.cavalcante@terra.com.br

DESENHO:
ARM. DAS VIGAS

PRANCHETA NO.
5 12
TOTAL
ABRIL/09

ESCALA INDICADA ARG. (P/RG) EST 01