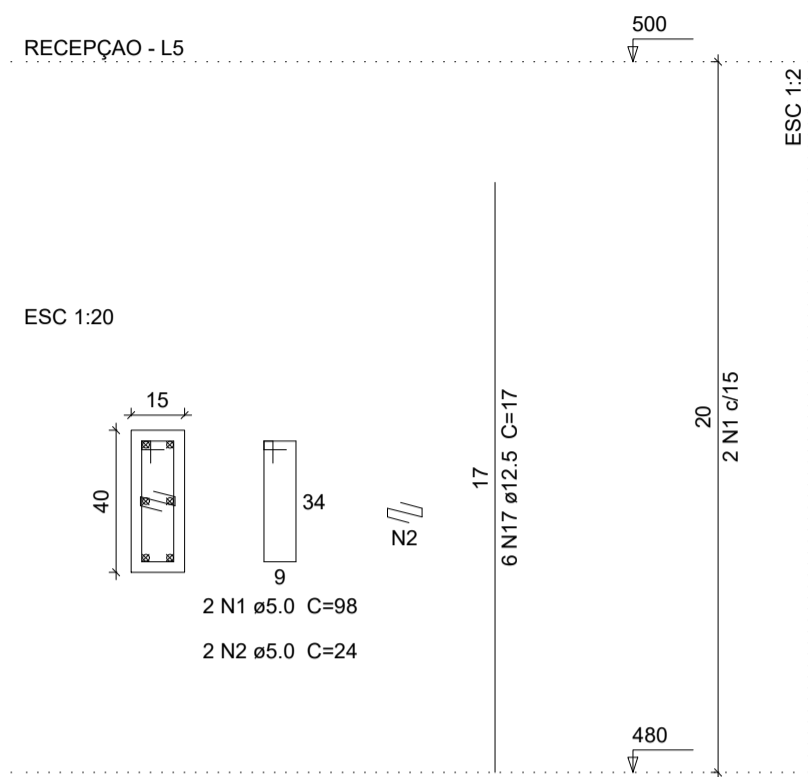
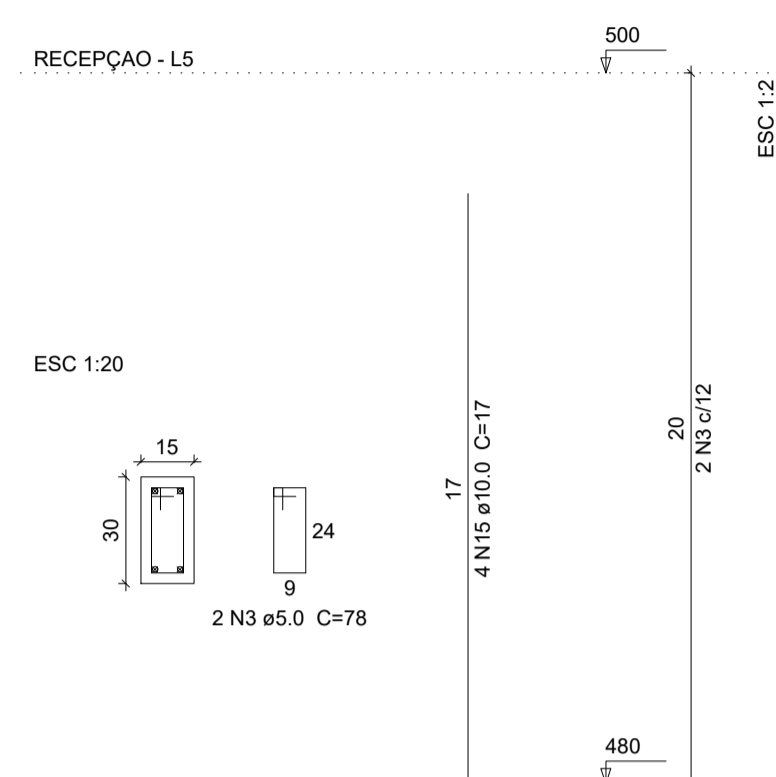


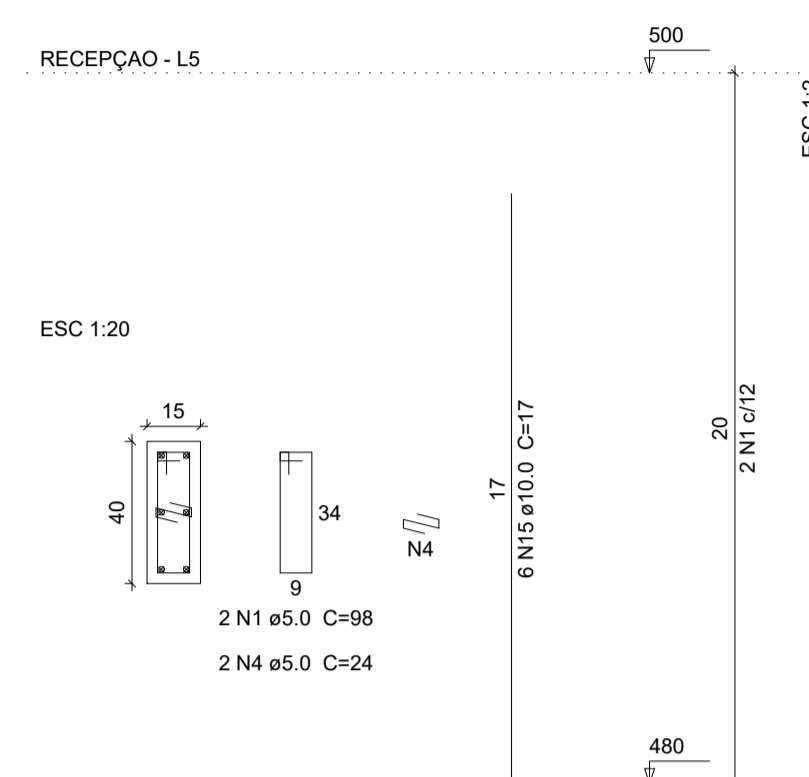
P59=P89



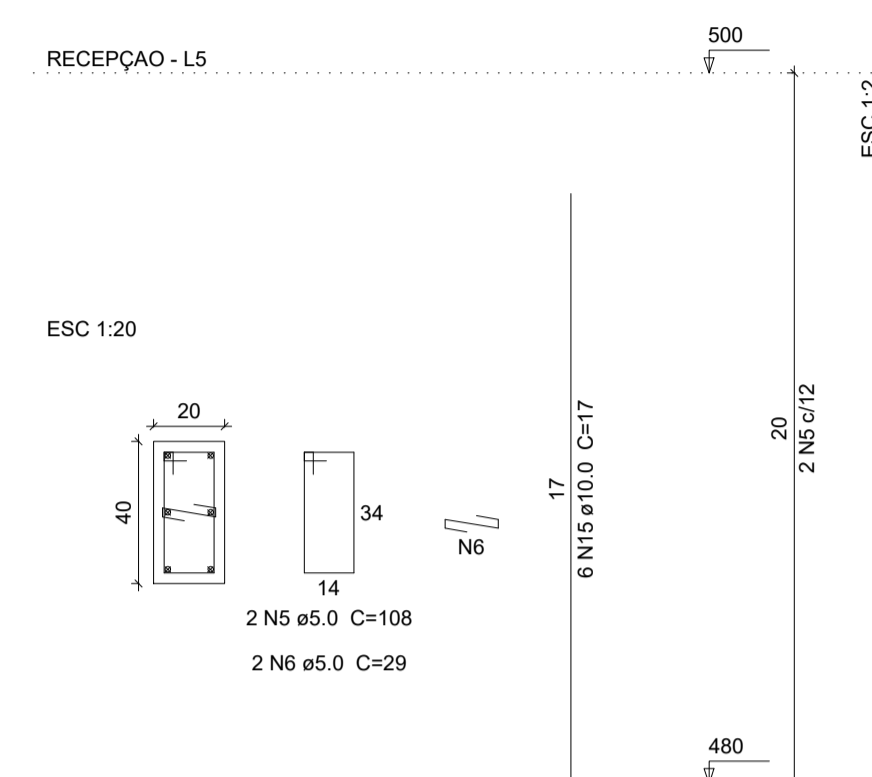
P60=P61=P62



P73=P86=P90



P92



Relação do aço

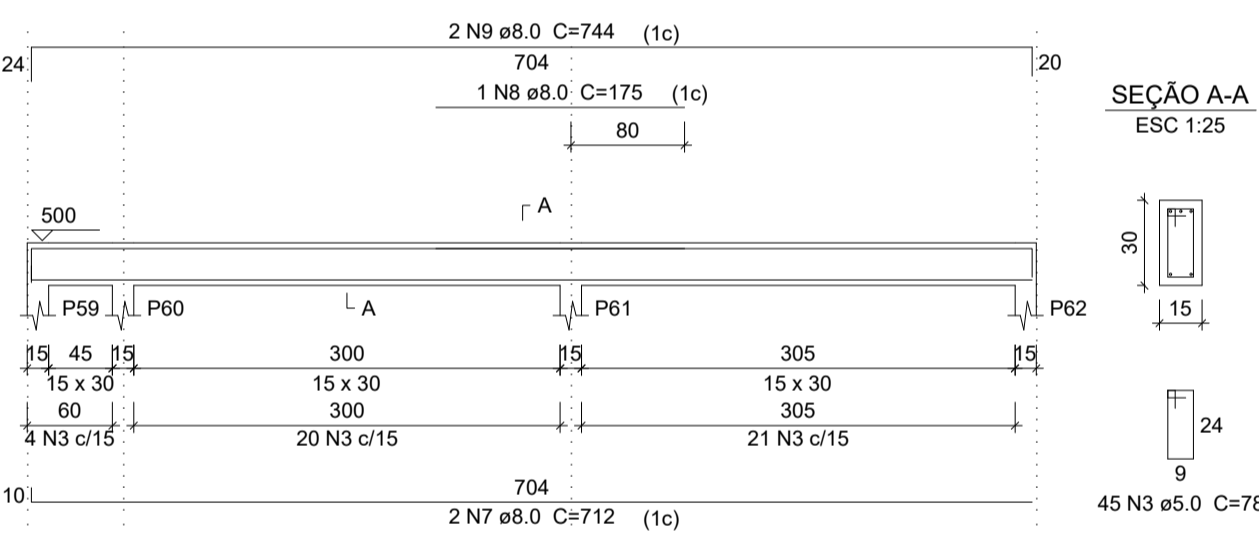
AÇO	N	DIAM	Q	UNIT (cm)	C.TOTAL (cm)
CA60	1	5.0	35	98	3430
	2	5.0	4	24	96
	3	5.0	130	78	10140
	4	5.0	6	24	144
	5	5.0	2	108	216
	6	5.0	2	29	58
CA50	7	8.0	2	712	1424
	8	8.0	1	175	175
	9	8.0	2	744	1488
	10	8.0	2	704	1408
	11	8.0	1	270	270
	12	8.0	3	589	1767
	13	8.0	2	598	1196
	14	8.0	2	648	1296
	15	10.0	36	17	612
	16	10.0	2	731	1462
	17	12.5	12	17	204
	18	12.5	2	211	422
	19	12.5	2	677	1354

Resumo do aço

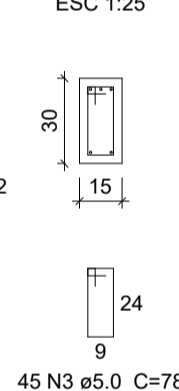
AÇO	DIAM	C.TOTAL (m)	PESO (kg)
CA50	8.0	90.3	35.6
	10.0	20.8	12.8
	12.5	19.8	19.1
CA60	5.0	140.9	21.7
PESO TOTAL			
CA50		67.5	
CA60		21.7	

Vol. de concreto total (C-25) = 1.37 m³
Área de forma total = 22.73 m²

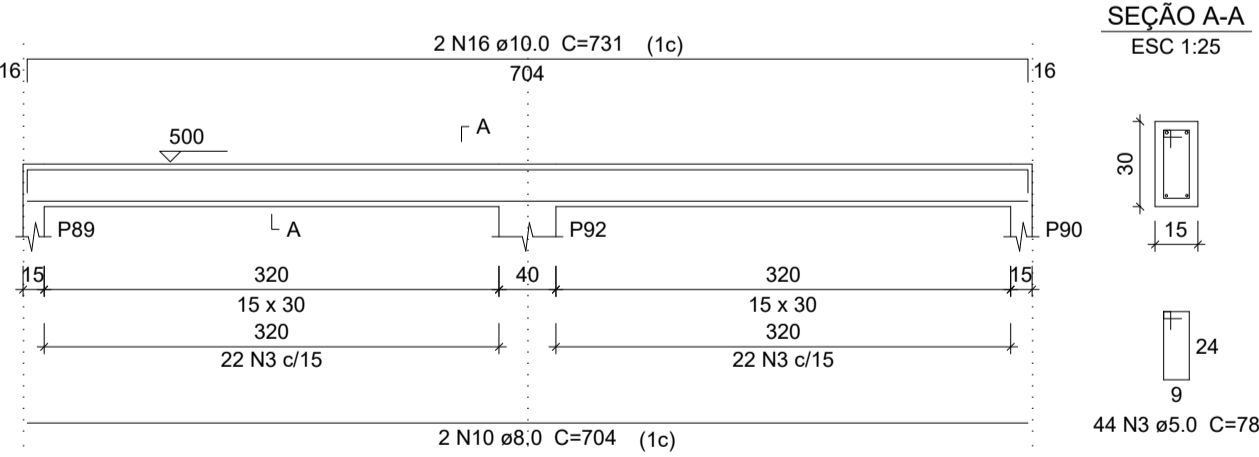
V1
ESC 1:50



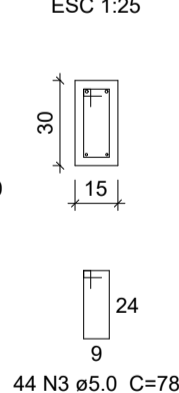
SEÇÃO A-A
ESC 1:25



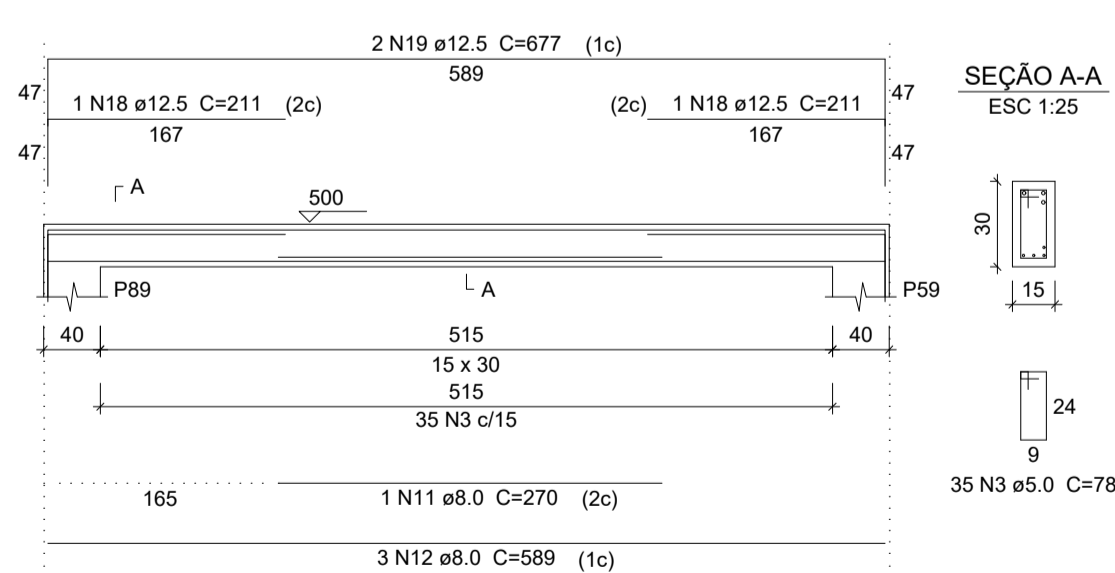
V2
ESC 1:50



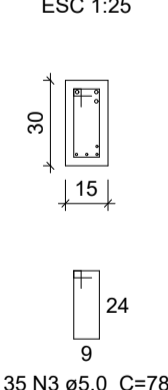
SEÇÃO A-A
ESC 1:25



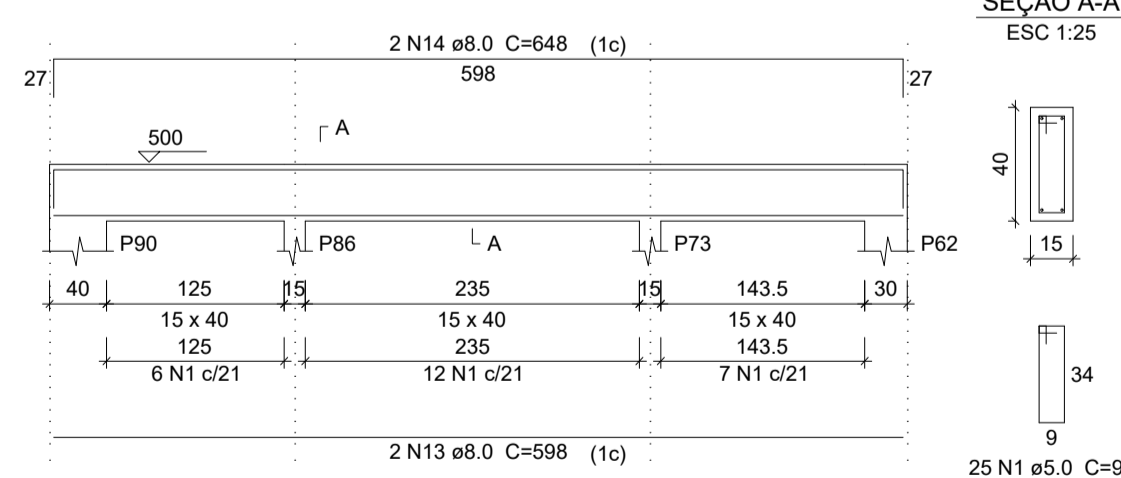
V3
ESC 1:50



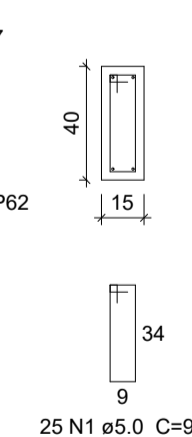
SEÇÃO A-A
ESC 1:25



V4
ESC 1:50



SEÇÃO A-A
ESC 1:25



SECOMP - SECRETARIA DE OBRAS, MOBILIDADE E SERVIÇOS PÚBLICOS

PROJETO: CSF - CAMPO DOS VELHOS
PROJETO ESTRUTURAL

INTERESSADO: PREFEITURA DE SOBRAL
ENDEREÇO: BAIRRO CAMPO DOS VELHOS
MUNICÍPIO: SOBRAL-CE

AUTOR: ENG. CARLOS EDUARDO BRATZ
CREA - 321948

PREFEITURA DE SOBRAL
PILARES PAVIMENTO RECEPÇÃO INDICADA
VIGAS PAVIMENTO RECEPÇÃO INDICADA

DATA: MAIO/2019 REVISÃO: ARQUIVO: PRACHA 14/22

DR. PENNA	1	0.10
	2	0.20
	3	0.30
	4	0.40
	5	0.50
	6	0.80
	7	0.30
SOLICITA	8	0.10
	9	0.09
	10	0.10