

**PREFEITURA MUNICIPAL**  
**DE SOBRAL**  
 Secretaria de Obras,  
 Mobilidade e  
 Serviços Públicos

PROJETO:

**CERCA TERRENO PEDRA DA ANDORINHA**

LOCAL:

**TAPERUABA / SOBRAL - CE**

PRANCHAL:

**02/0**

PROJETO:

**DETALHE CERCA DE CONCRETO**

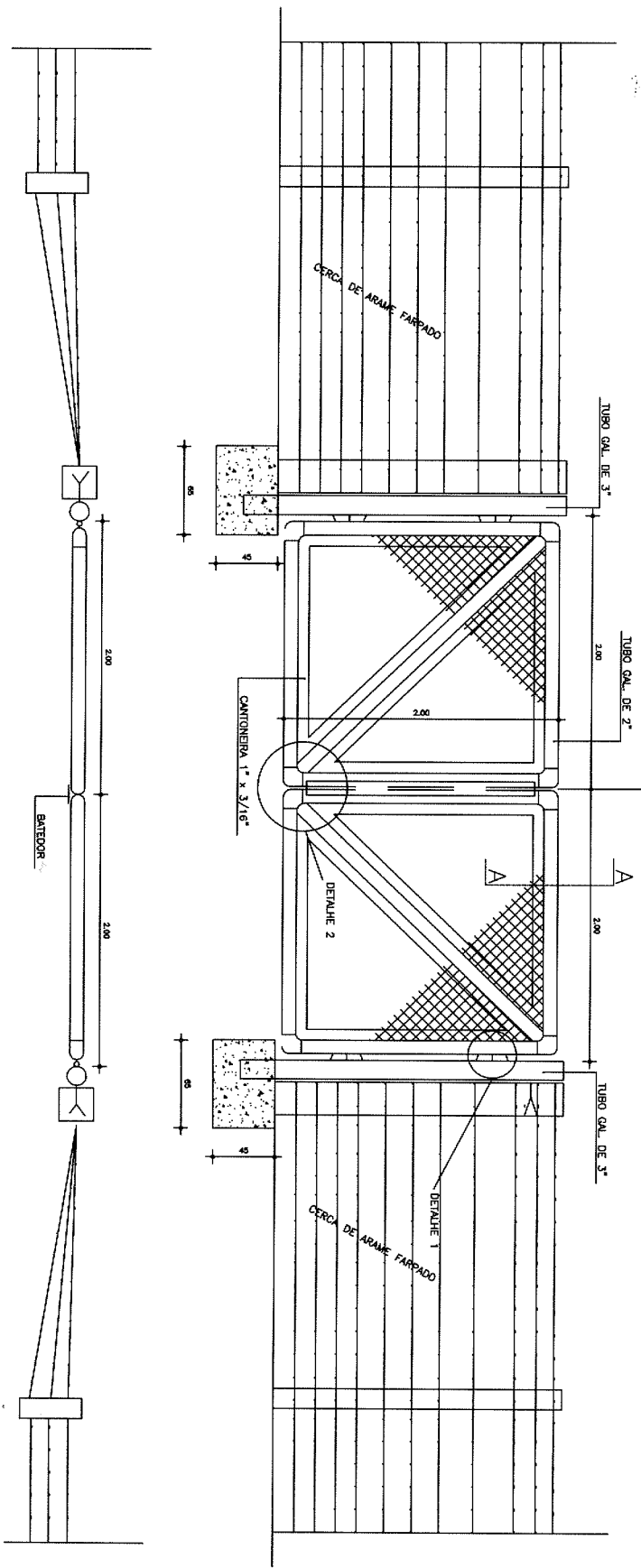
DESENHO:

**CARLOS BRATZ**

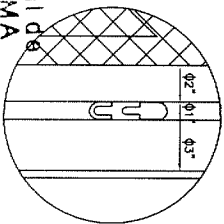
DATA:

**JUL/2017**

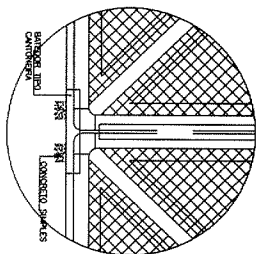
**DETALHE PORTÃO**  
 ESCALA 1:50  
 CERCA



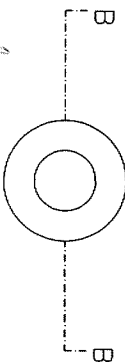
DETALHE 1



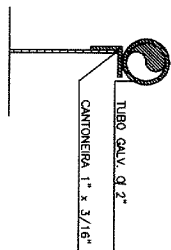
DETALHE 2



DETALHE DO PIAO



CORTE AA



Autarquia Municipal de Meio Ambiente - AMA

Jorge Vasconcelos Trindade SUPERINTENDENTE

*Carlos Eduardo Bratz*  
**CARLOS EDUARDO BRATZ**  
 ENGENHEIRO CIVIL  
 RNP: 061539150-8