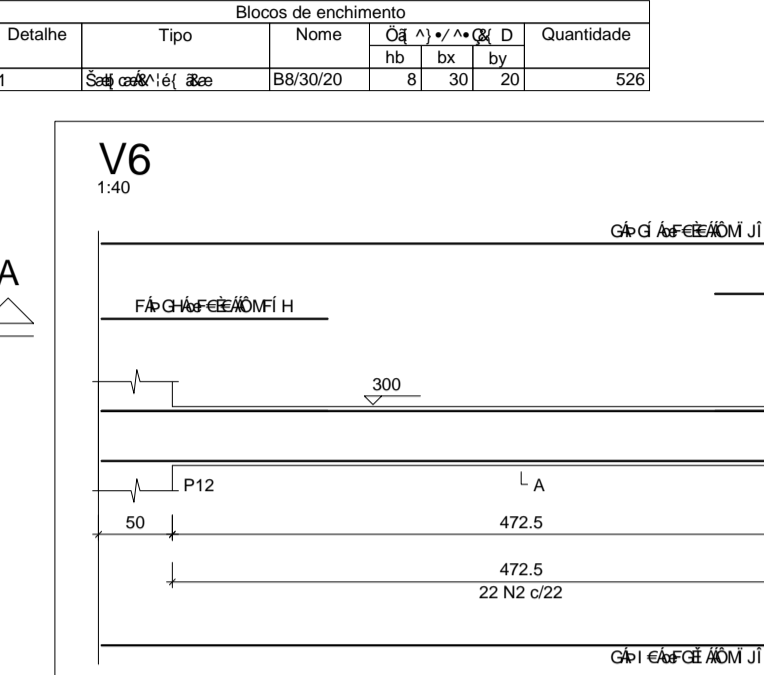
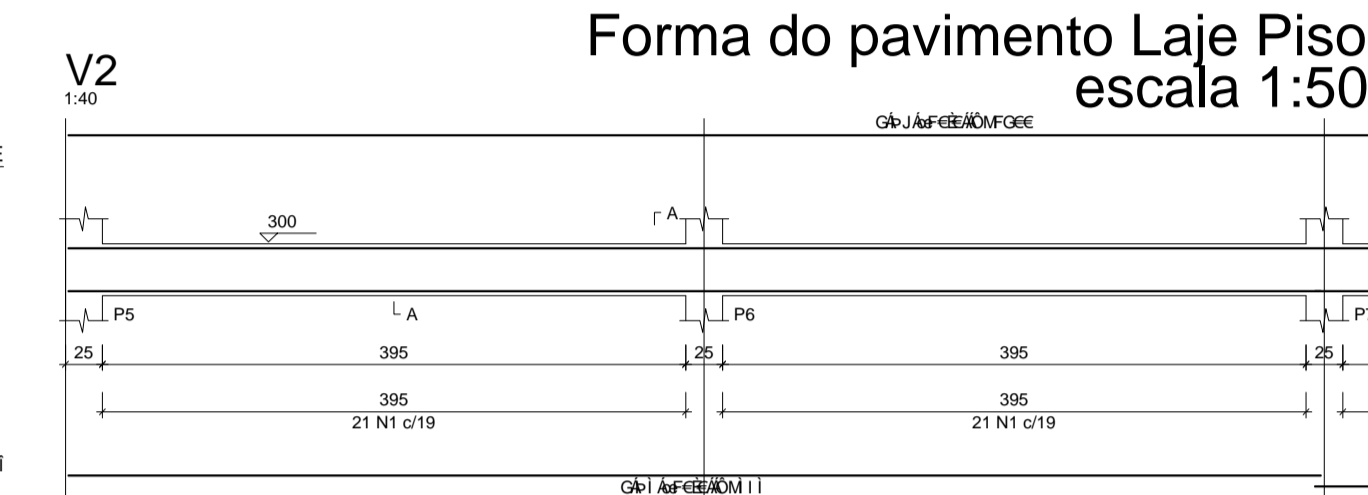
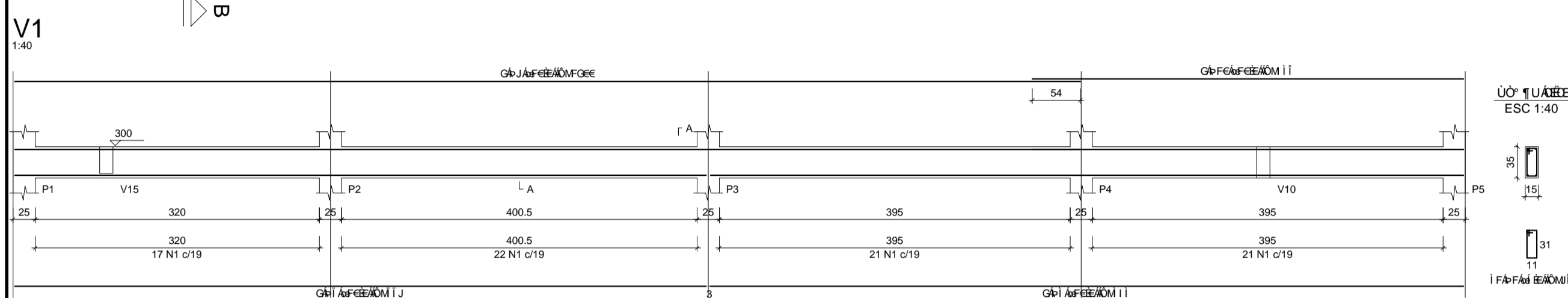
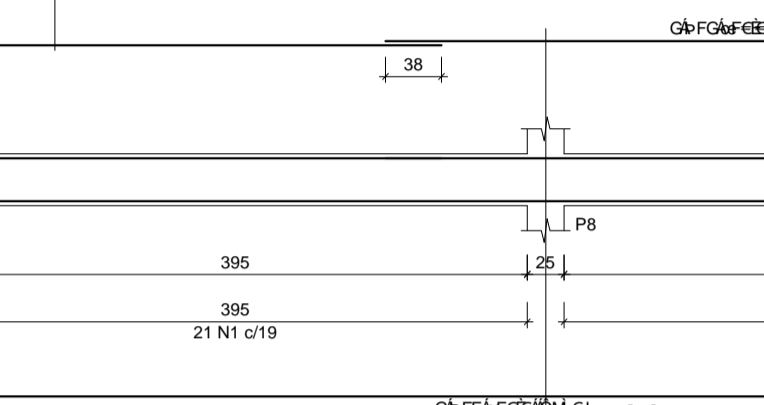
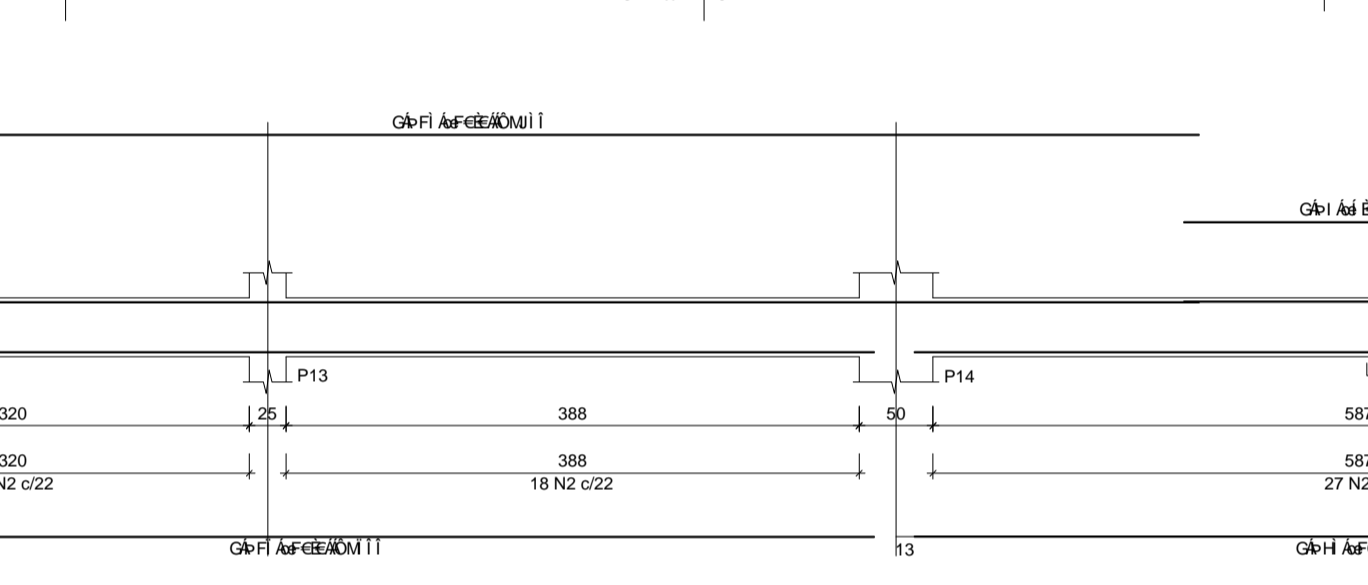
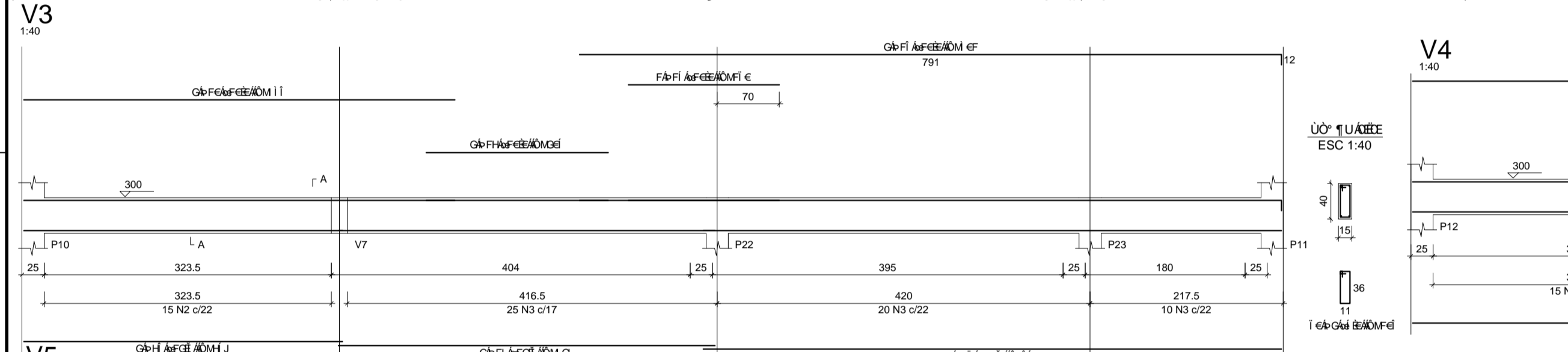


Q	U	DIAM	C.TOTAL (m)	PESO + 10% (kg)
CA50	6.3	18	307.9	4.8
CA60	5.0	20	209.8	8.8
<b>PESO TOTAL</b>				<b>13.6</b>

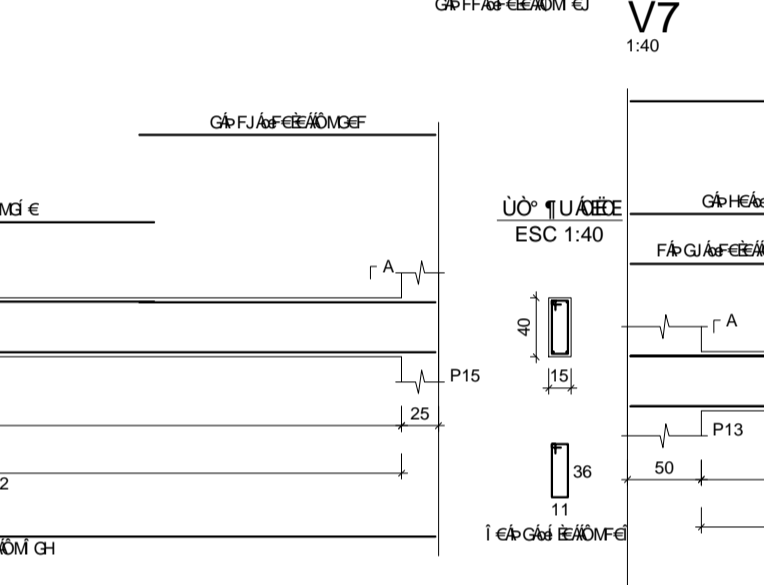
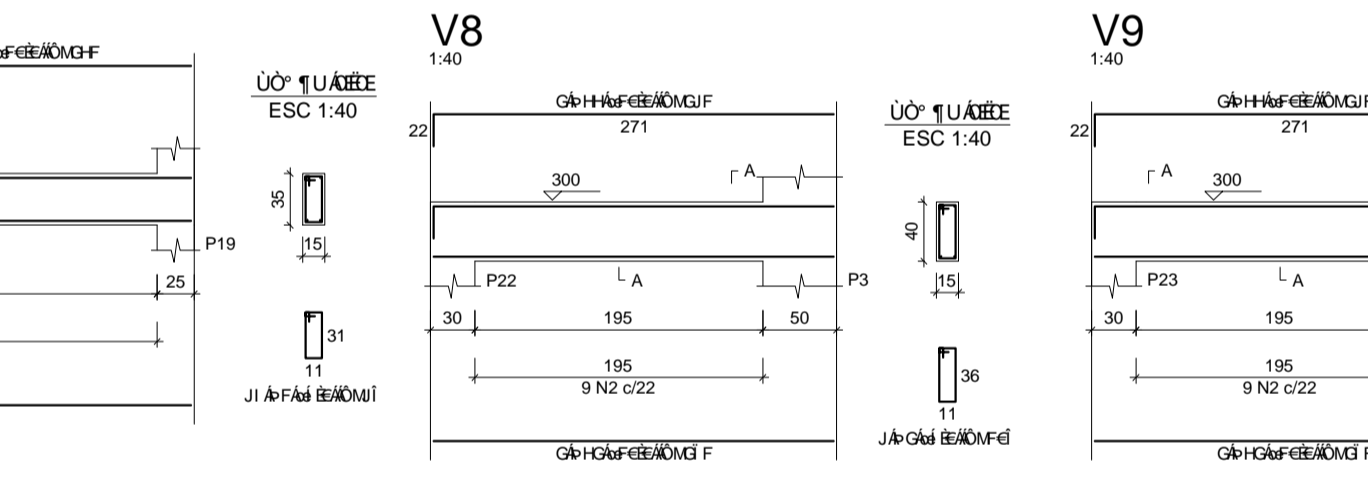
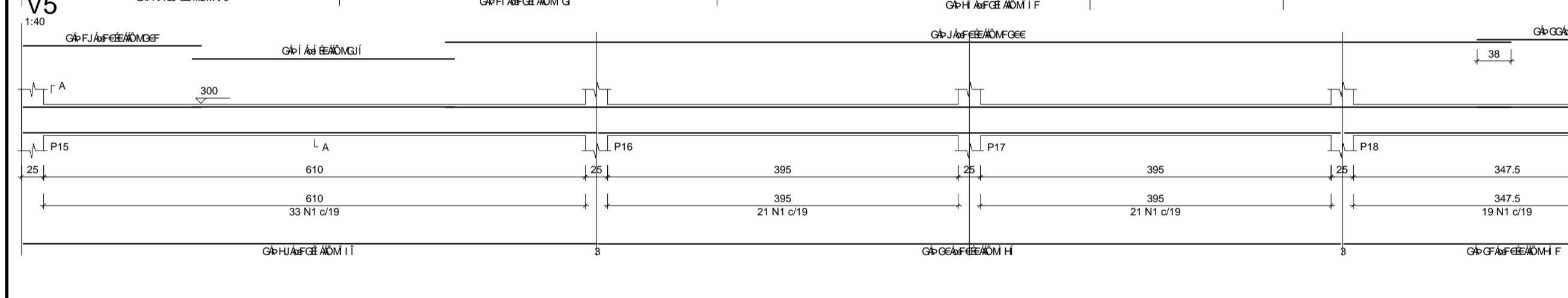
Q	U	N	DIAM	Q	UNIT	C.TOTAL (cm)
CA60	1	5.0	268	96	25728	
CA50	2	5.0	145	106	15370	
CA60	3	5.0	87	112	9744	
CA50	4	5.0	2	250	500	
CA50	5	5.0	2	295	590	
CA50	6	6.3	16	112	1792	
CA50	7	10.0	4	848	3392	
CA50	8	10.0	6	1200	7200	
CA50	9	10.0	4	486	1944	
CA50	10	10.0	2	809	3236	
CA50	11	10.0	2	492	1968	
CA50	12	10.0	2	896	3584	
CA50	13	10.0	2	205	820	
CA50	14	10.0	2	424	1696	
CA50	15	10.0	1	170	680	
CA50	16	10.0	2	801	3204	
CA50	17	10.0	2	766	3064	
CA50	18	10.0	2	381	1524	
CA50	19	10.0	4	201	804	
CA50	20	10.0	2	835	3340	
CA50	21	10.0	2	381	1524	
CA50	22	10.0	2	231	924	
CA50	23	10.0	1	153	612	
CA50	24	10.0	3	210	840	
CA50	25	10.0	2	796	3184	
CA50	26	10.0	16	103	4112	
CA50	27	10.0	1	563	2252	
CA50	28	10.0	4	797	3188	
CA50	29	10.0	1	143	572	
CA50	30	10.0	2	303	1212	
CA50	31	10.0	1	236	944	
CA50	32	10.0	2	271	1084	
CA50	33	10.0	4	291	1164	
CA50	34	10.0	2	234	936	
CA50	35	10.0	2	763	3052	
CA50	36	12.5	2	559	2236	
CA50	37	12.5	2	651	2604	
CA50	38	12.5	2	623	2492	
CA50	39	12.5	2	646	2584	
CA50	40	12.5	2	796	3184	
CA50	41	12.5	2	563	2252	



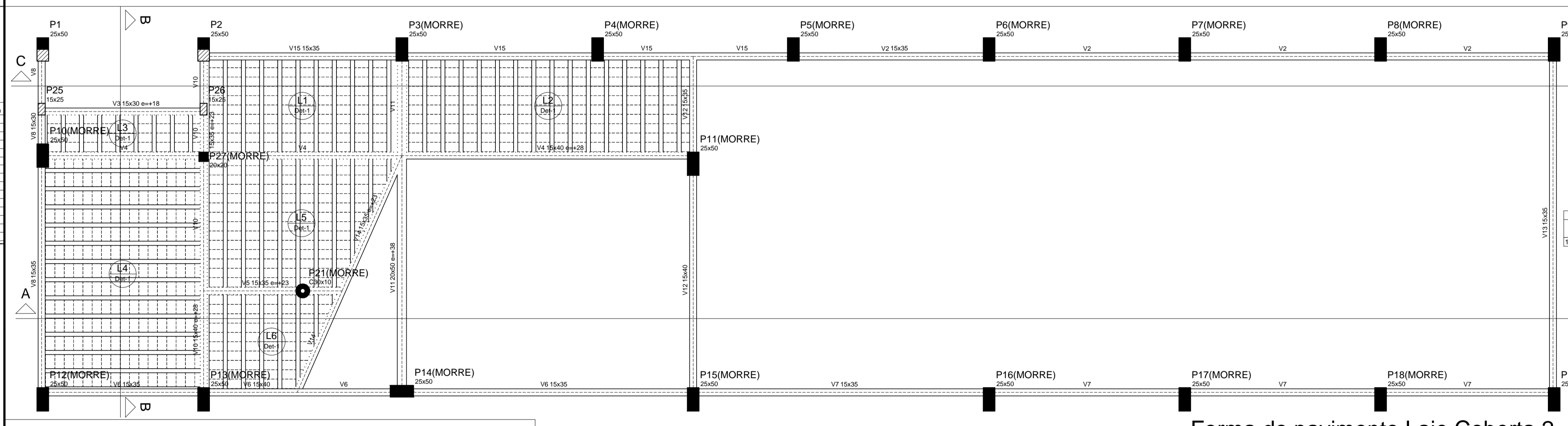
Q	U	DIAM	C.TOTAL (m)	PESO + 10% (kg)
CA50	10.0	47.9	32.4	8.8
CA60	5.0	50.9	8.8	
<b>PESO TOTAL</b>				<b>17.6</b>



Q	U	DIAM	C.TOTAL (m)	PESO + 10% (kg)
CA50	10.0	47.9	32.4	8.8
CA60	5.0	50.9	8.8	
<b>PESO TOTAL</b>				<b>17.6</b>

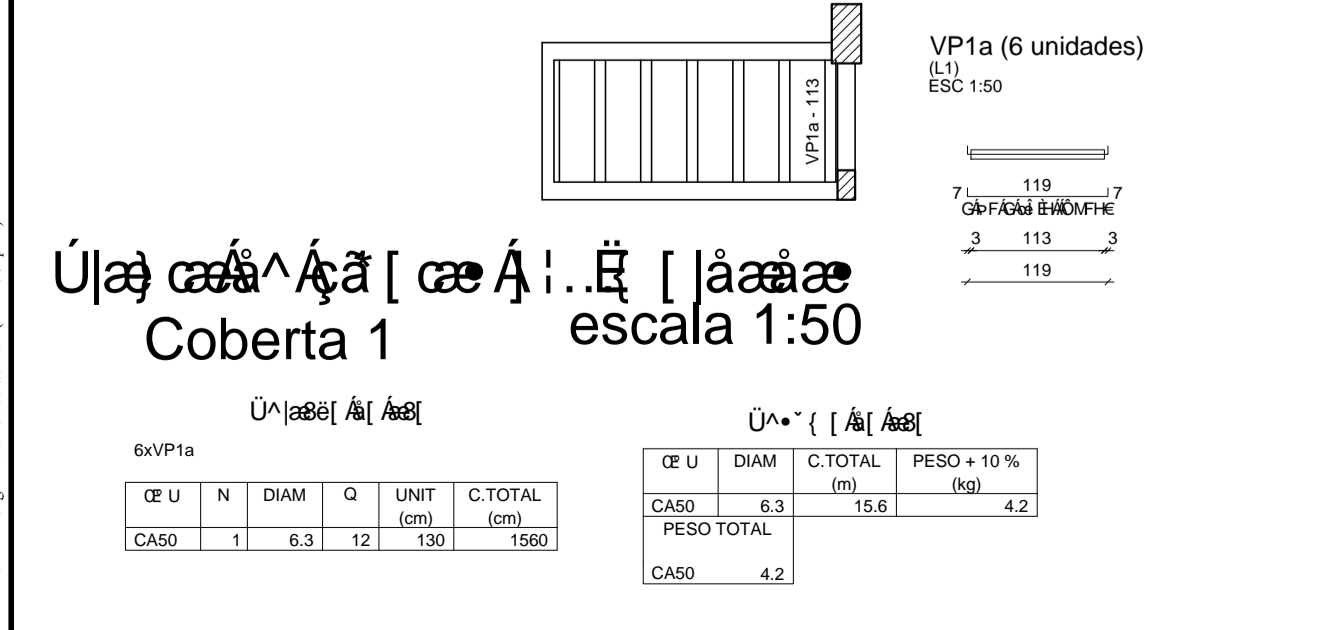


Q	U	DIAM	C.TOTAL (m)	PESO + 10% (kg)
CA50	10.0	47.9	32.4	8.8
CA60	5.0	50.9	8.8	
<b>PESO TOTAL</b>				<b>17.6</b>

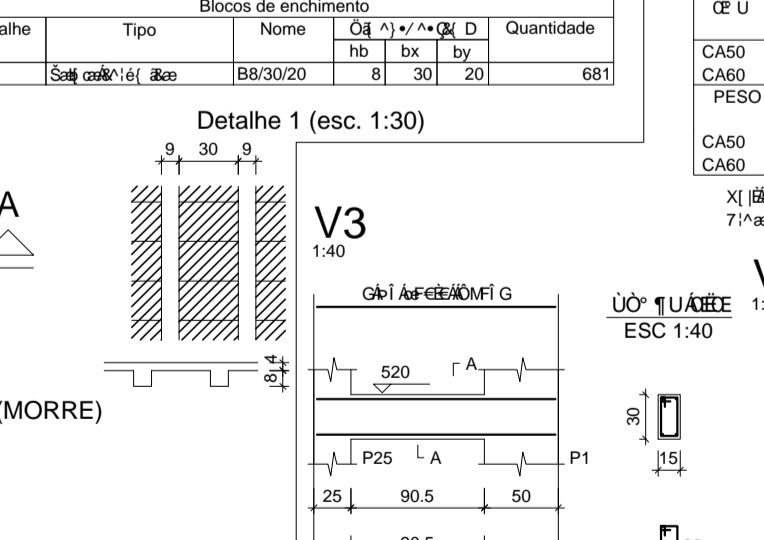


Q	U	DIAM	C.TOTAL (m)	PESO + 10% (kg)
CA50	10.0	47.9	32.4	8.8
CA60	5.0	50.9	8.8	
<b>PESO TOTAL</b>				<b>17.6</b>

Q	U	DIAM	C.TOTAL (m)	PESO + 10% (kg)	
CA60	1	5.0	53	86	4558
CA50	2	5.0	7	76	532
CA60	3	10.0	4	366	1464
CA50	4	10.0	2	359	718
CA50	5	10.0	2	378	756
CA50	6	10.0	8	162	1296
CA50	7	10.0	2	129	258
CA50	8	10.0	2	146	292



APROVO	PAGO	I.S.S.P.	I.S.S.C.	CREA
--------	------	----------	----------	------



Q	U	DIAM	C.TOTAL (m)	PESO + 10% (kg)
CA50	10.0	47.9	32.4	8.8
CA60	5.0	50.9	8.8	