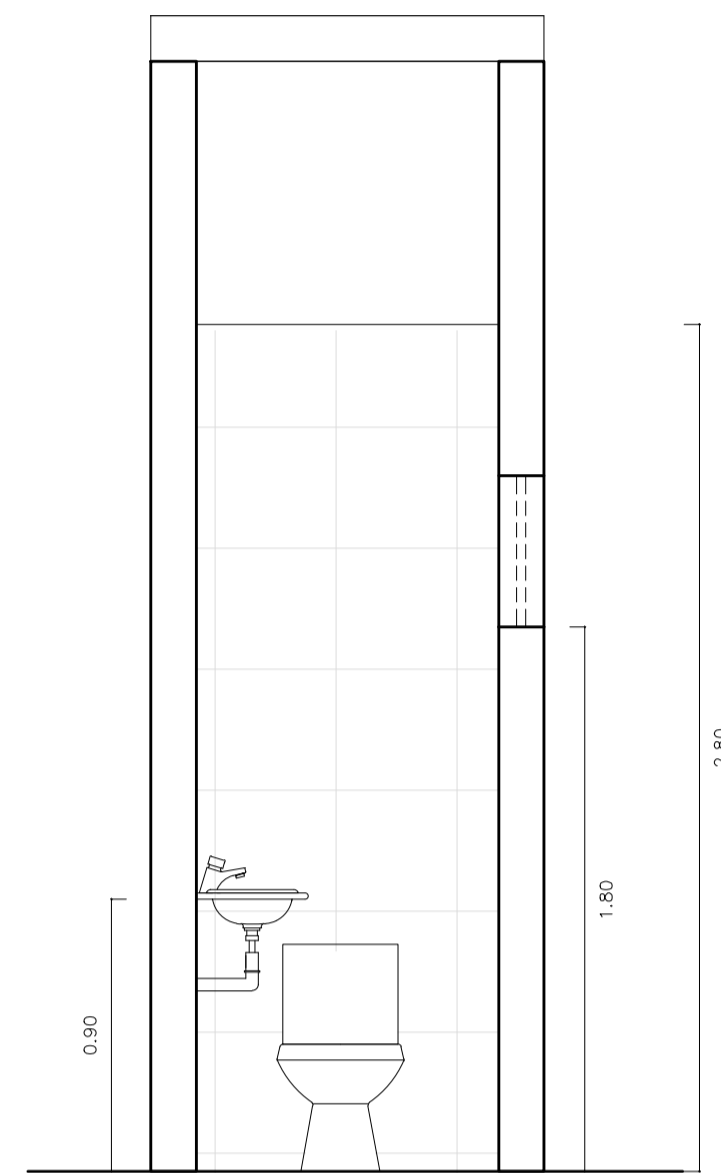
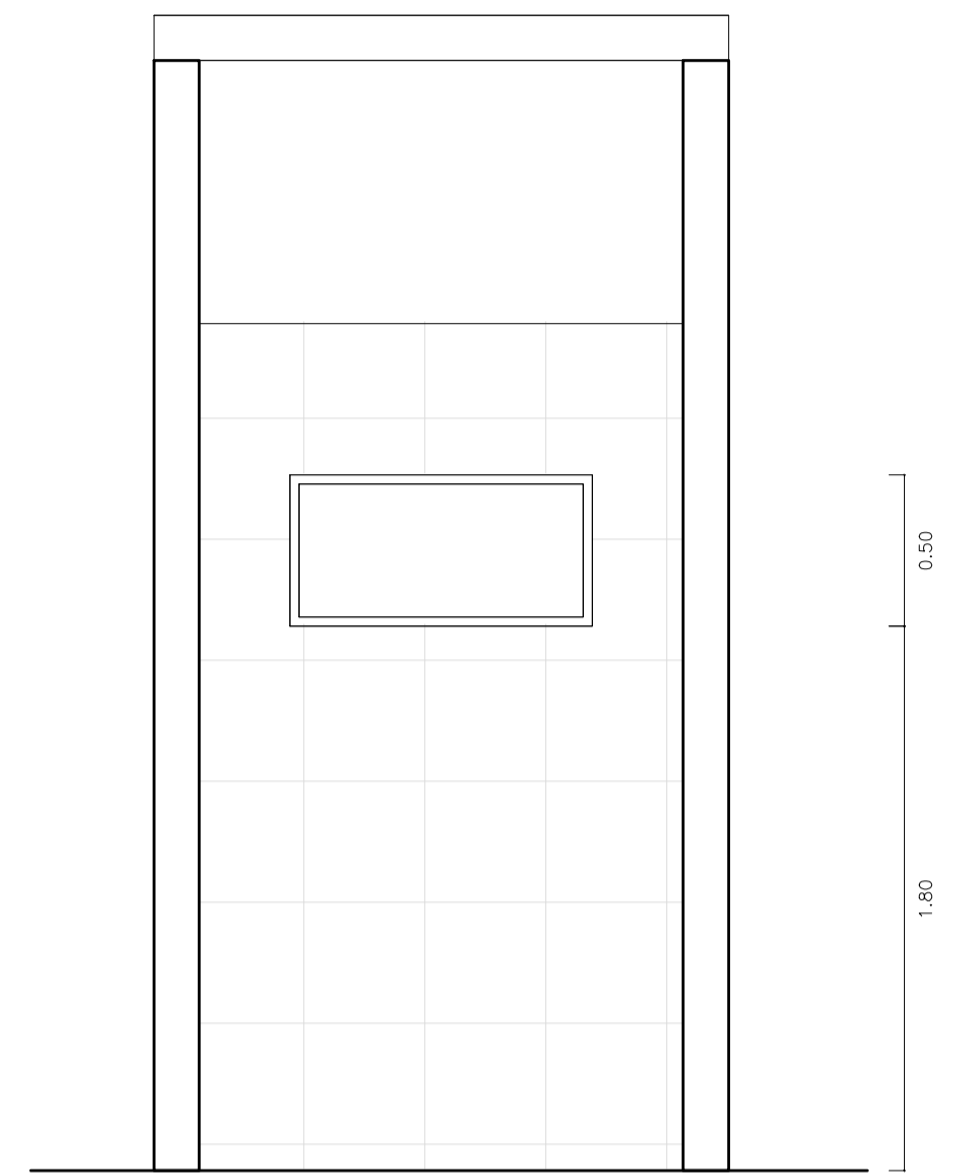


13 DETALHE LAVABO

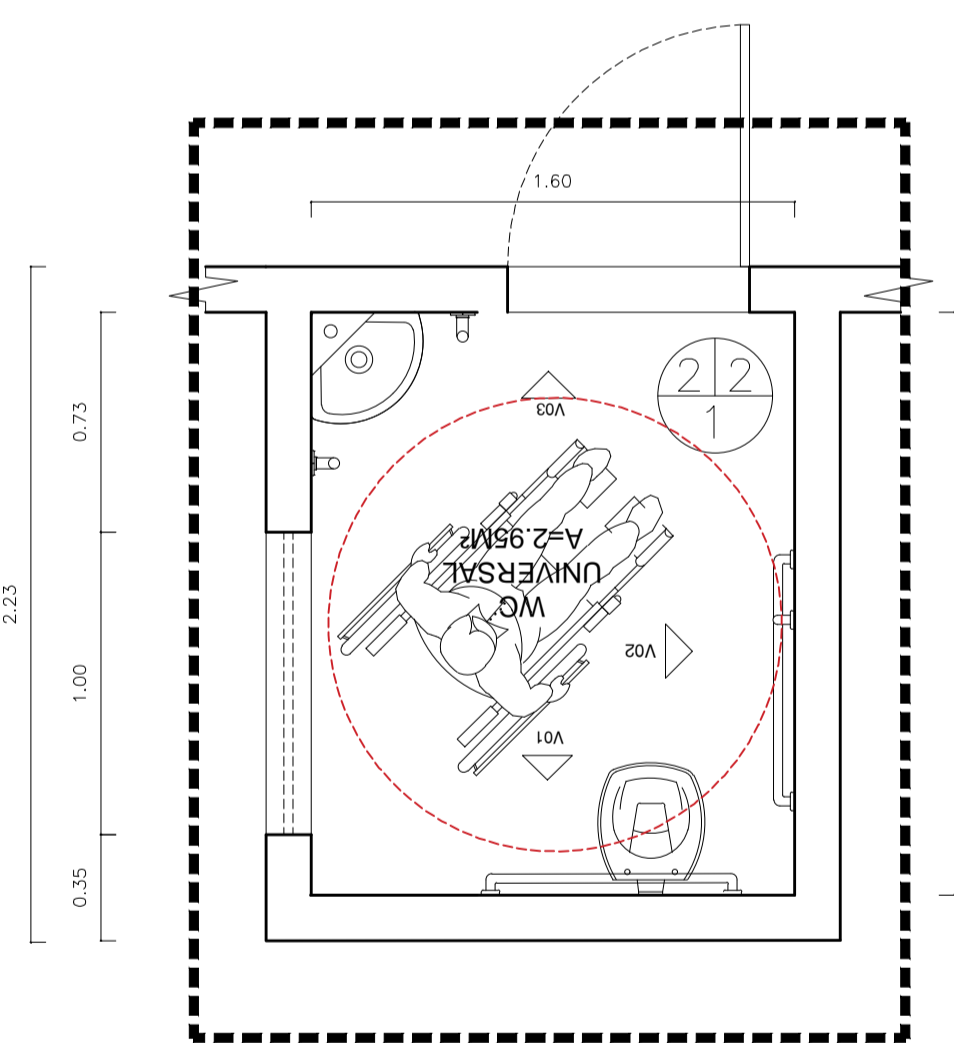
ESCALA — 1 : 25



VISTA 01
ESCALA — 1 : 25

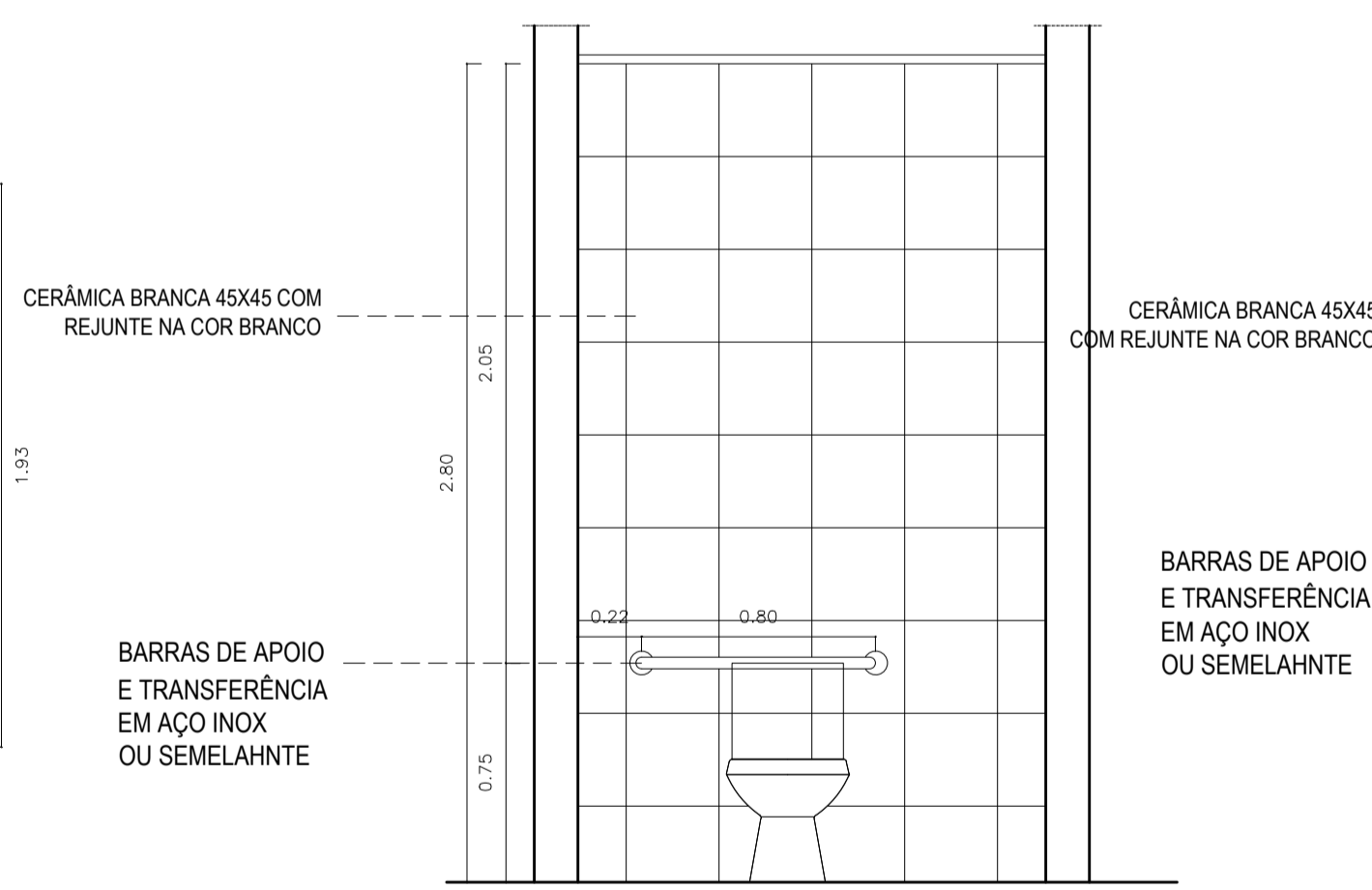


VISTA 02
ESCALA — 1 : 25

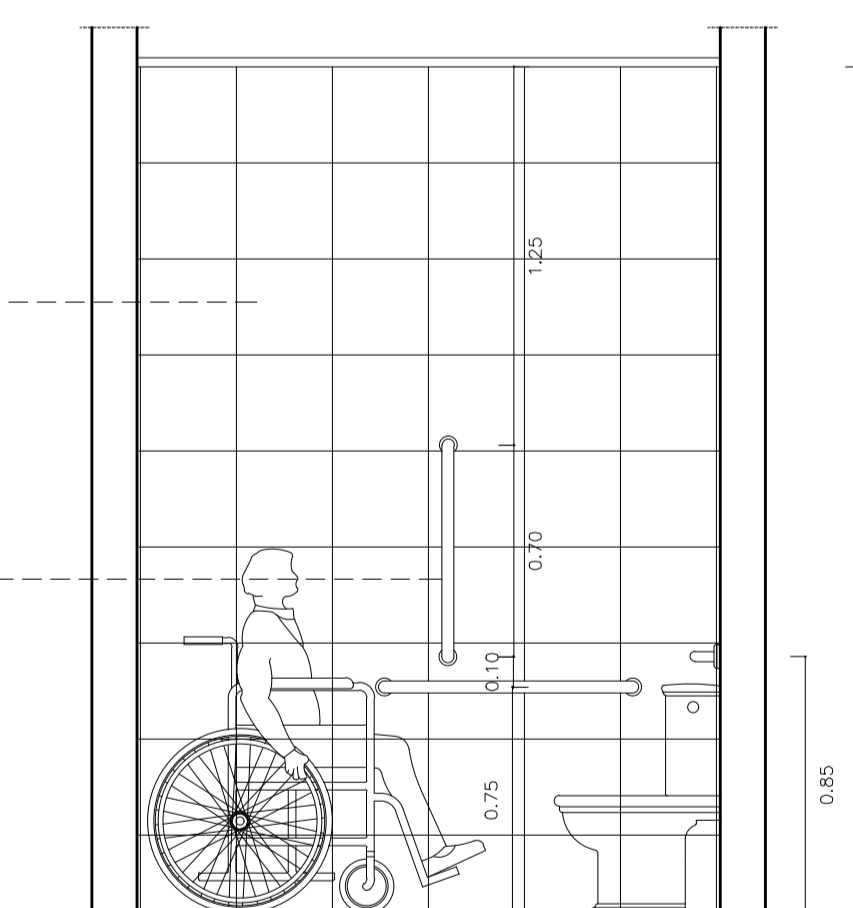


14 DETALHE WC ACESSÍVEL

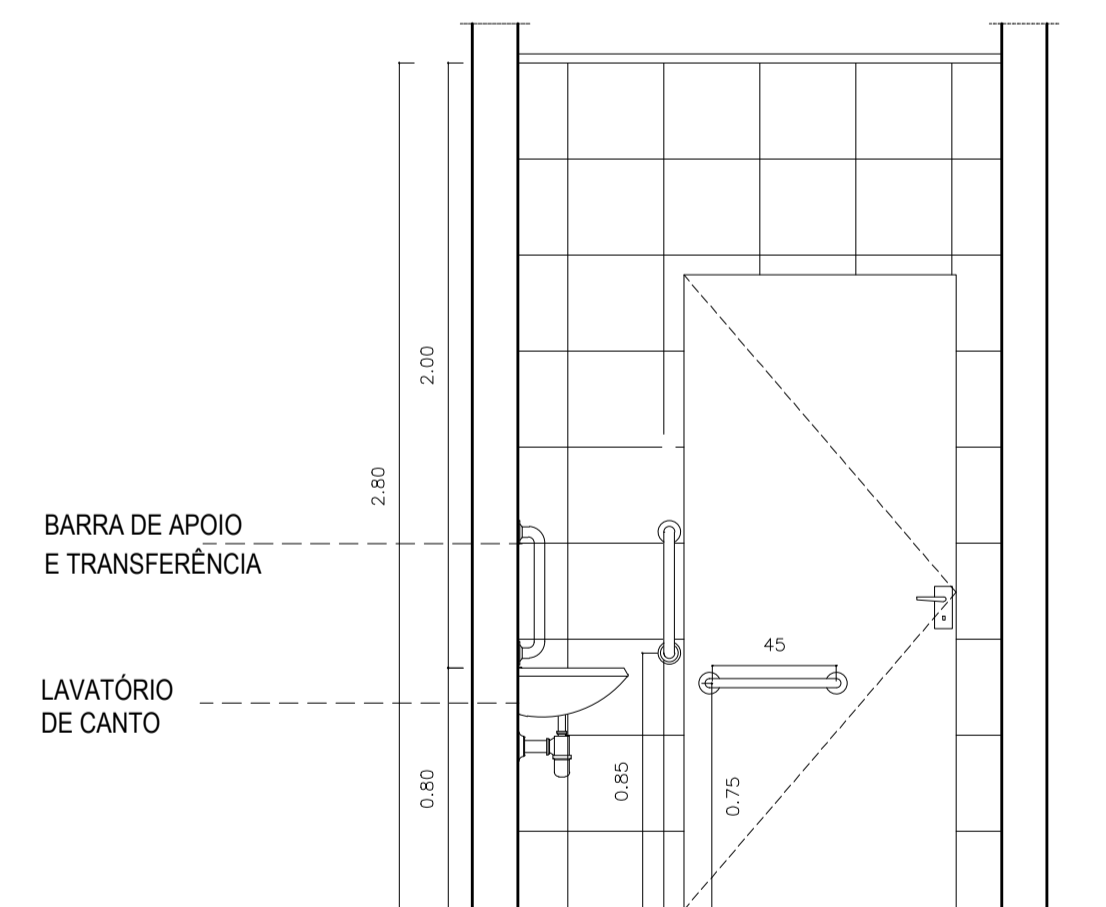
ESCALA — 1 : 25



VISTA 01
ESCALA — 1 : 25



VISTA 02
ESCALA — 1 : 25



VISTA 03
ESCALA — 1 : 25

SECRETARIA DA INFRAESTRUTURA

PROJETO: **PROJETO ARQUITETÔNICO**
REFORMA SECRETARIA MUNICIPAL DO TRÂNSITO E TRANSPORTE- ANTIGA DELEGACIA

INTERESSADO:
PREFEITURA DE SOBRAL
ENDEREÇO:
RUA CEL. FREDERICO GOMES, 731
MUNICÍPIO:
SOBRAL

AUTOR:
IGOR FERNANDES
AUTOR:
VICENTE LINHARES
COLABORADOR:
VICENTE LINHARES

DESENHOS DA PRANCHA: **PREFEITURA DE SOBRAL**
DETALHE LAVABO 1/25
DETALHE WC ACESSÍVEL 1/25