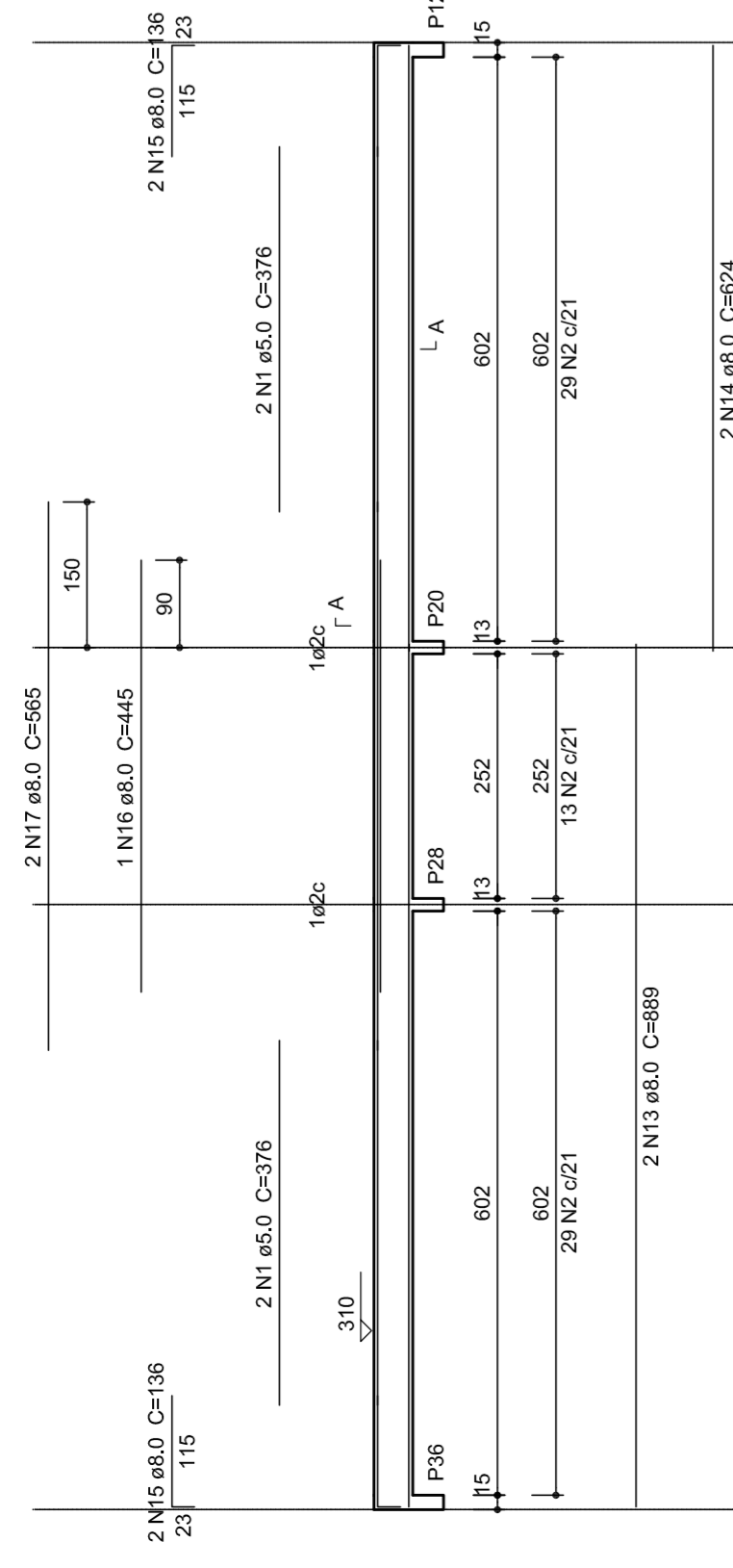
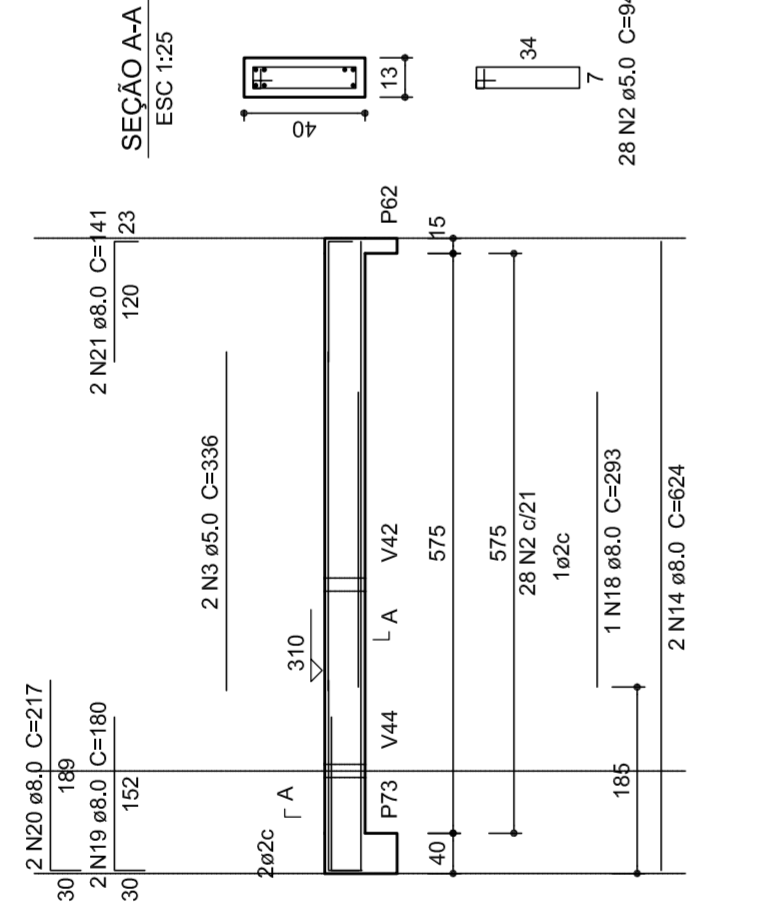


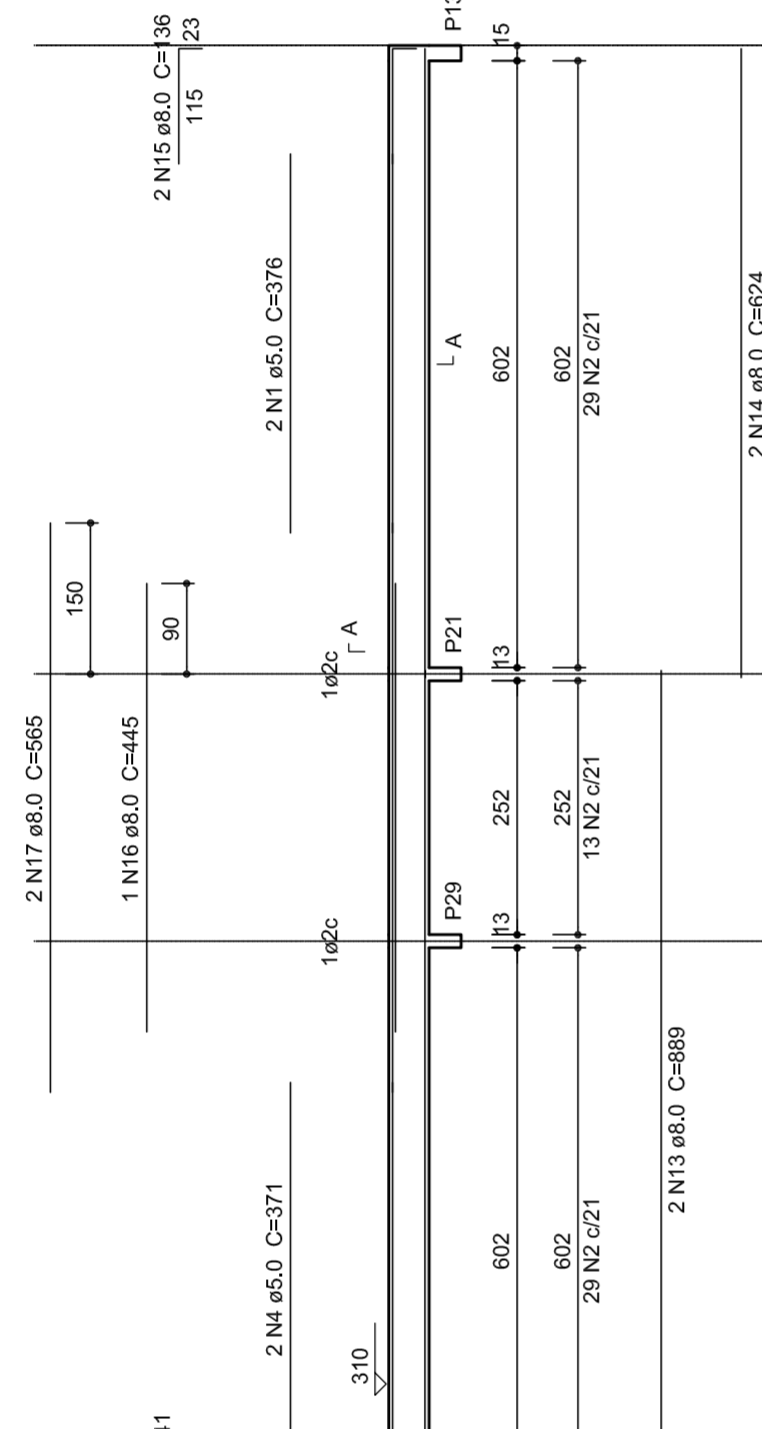
V99
ESC: 1:75



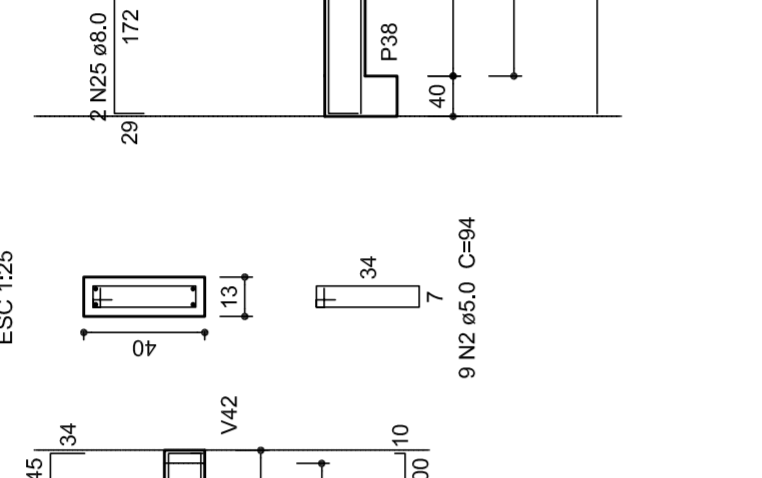
V102
ESC: 1:75



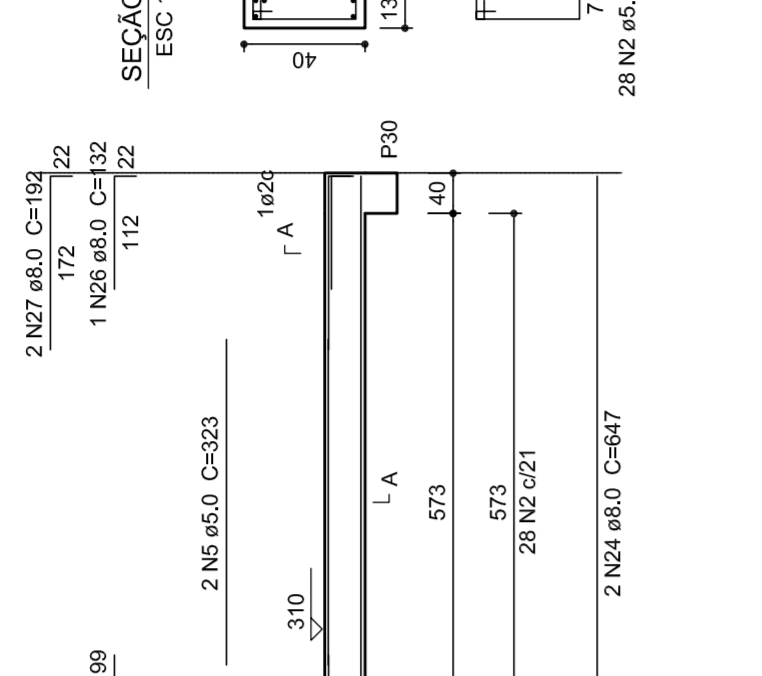
V103
ESC: 1:75



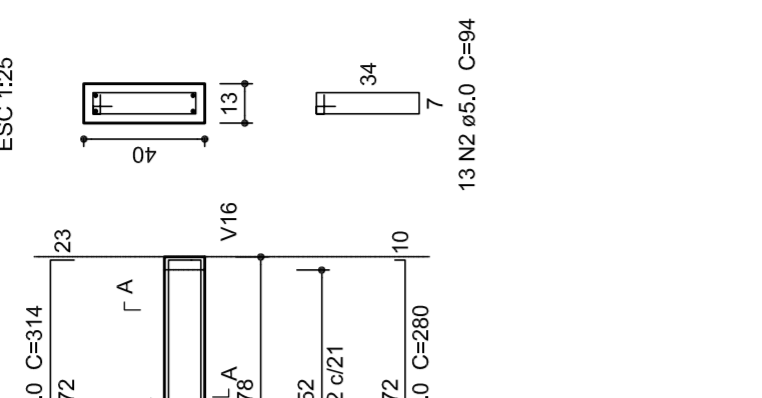
V111
ESC: 1:75



V113
ESC: 1:75



V118
ESC: 1:75

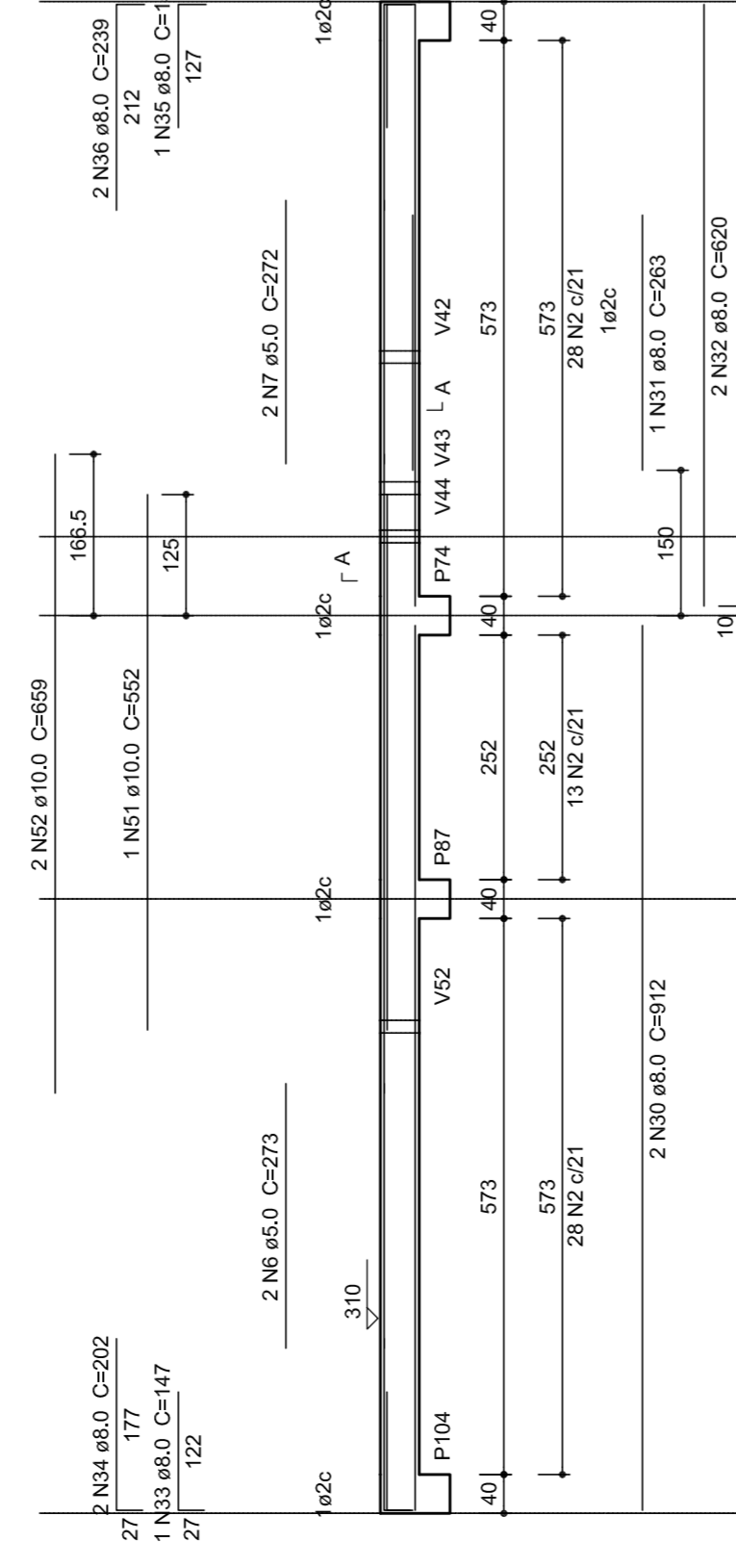


Resumo do aço

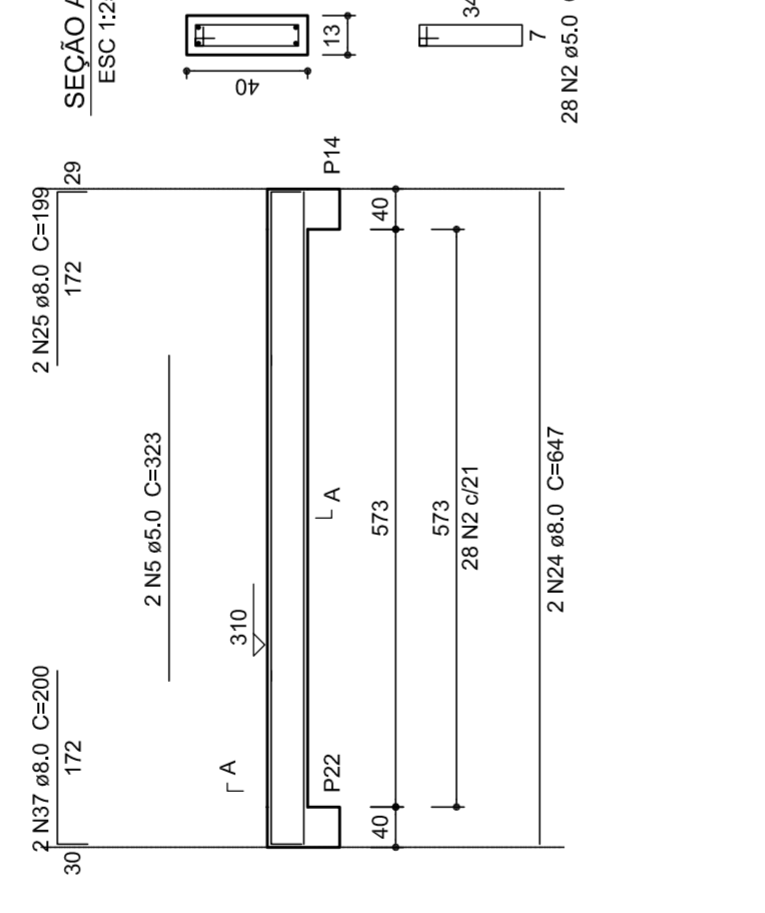
ACO	DIAM (mm)	C.TOTAL (m)	PESO - 10 % (kg)
CA50	10,0	486,4	60,8
CA60	10,0	31,1	2,1
CA80	5,0	728,7	123,5
PESO TOTAL (kg)			233,7
CA50			233,7
CA60			123,5

Volume de concreto (C=25) = 7,162 m³
Área de forma = 132,83 m²

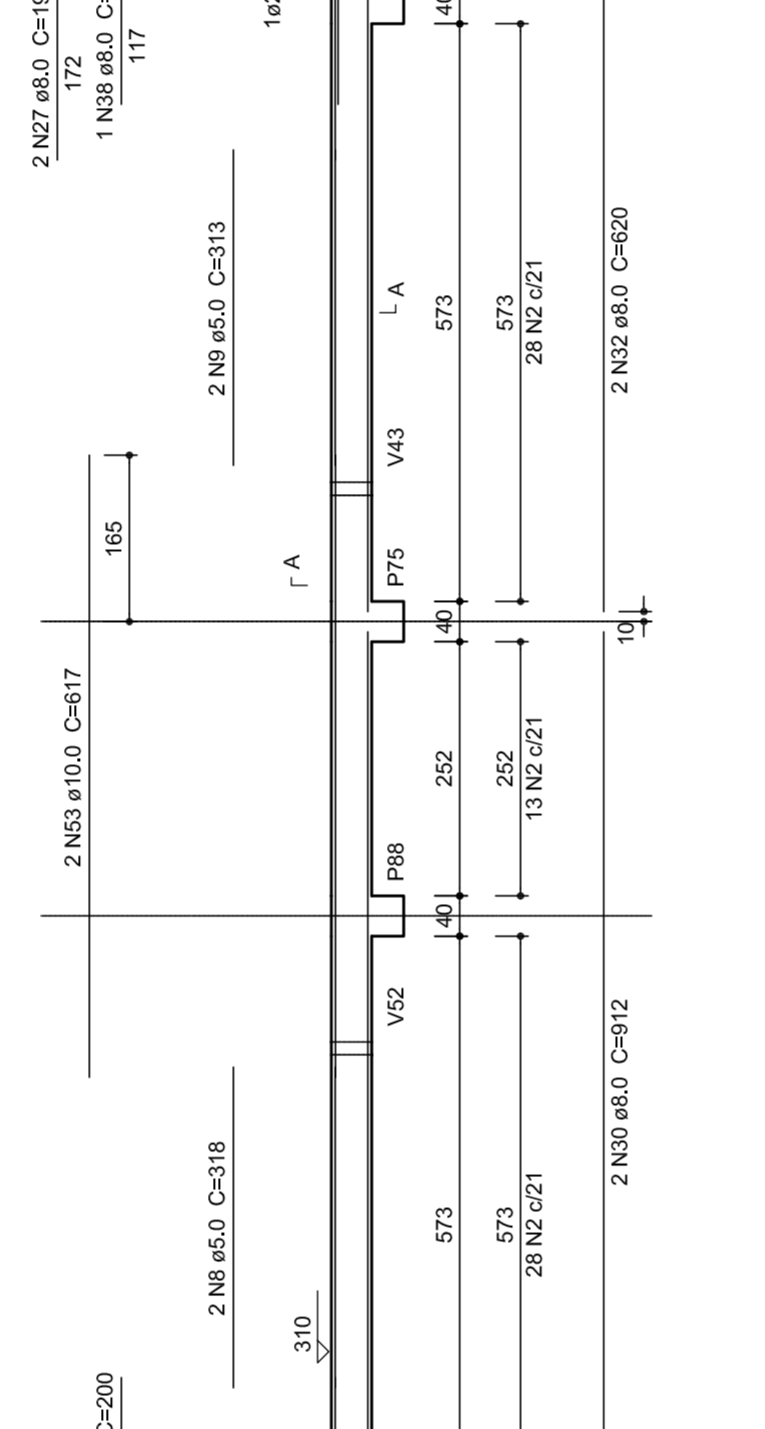
V112
ESC: 1:75



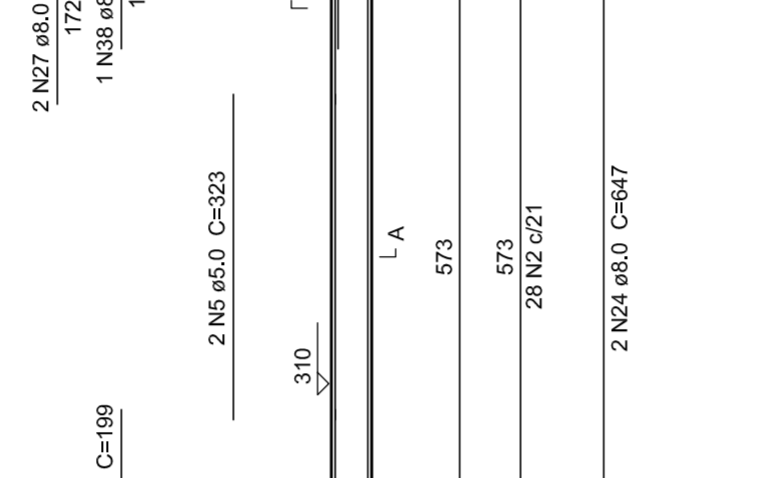
V114
ESC: 1:75



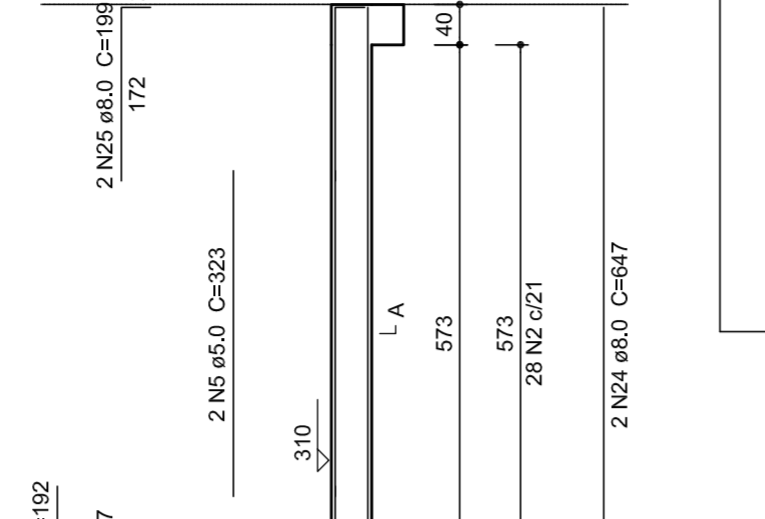
V115
ESC: 1:75



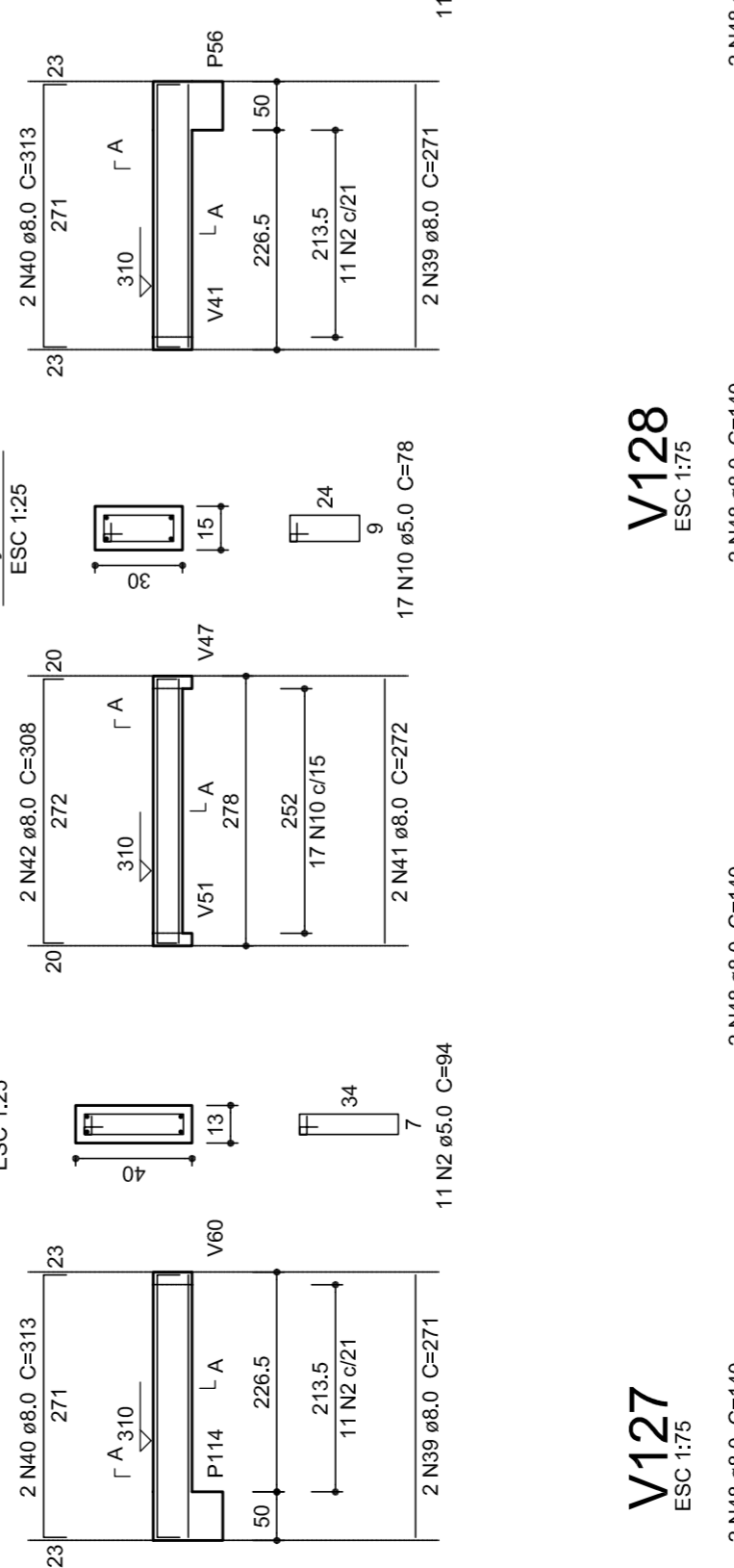
V116
ESC: 1:75



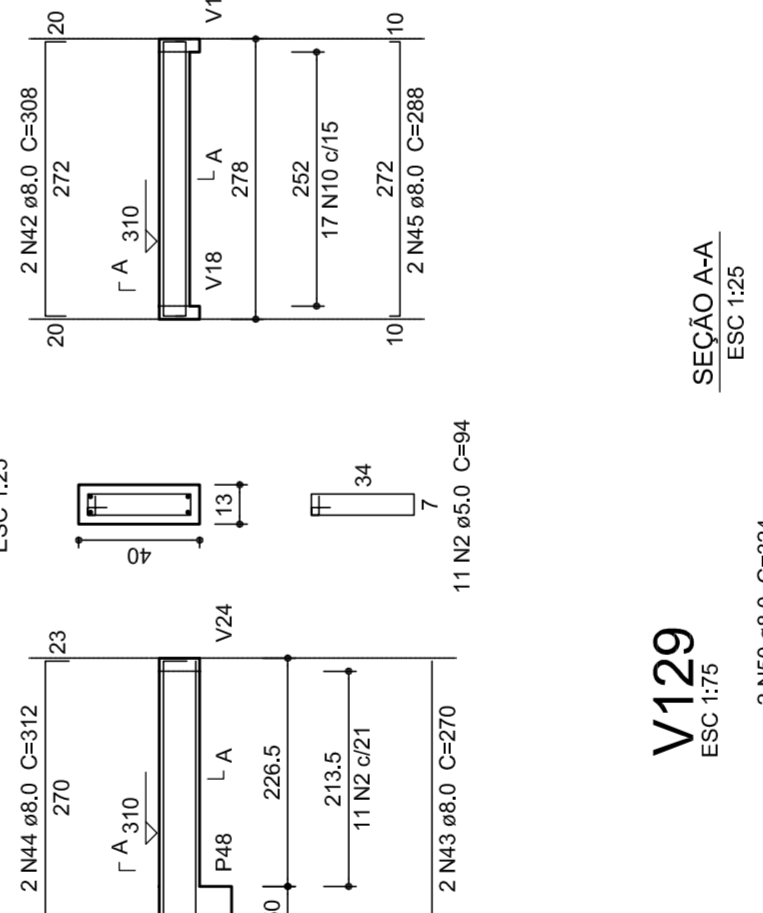
V117
ESC: 1:75



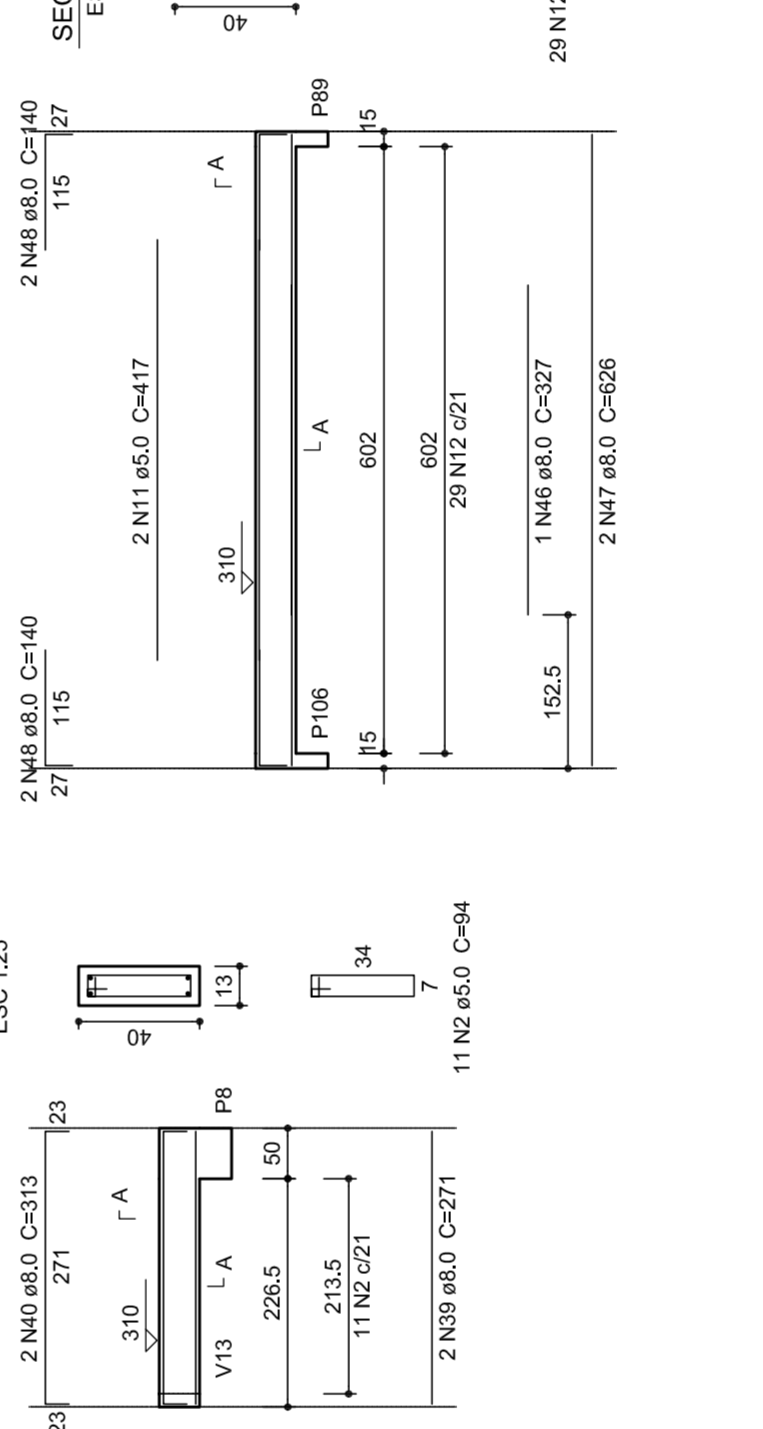
V119
ESC: 1:75



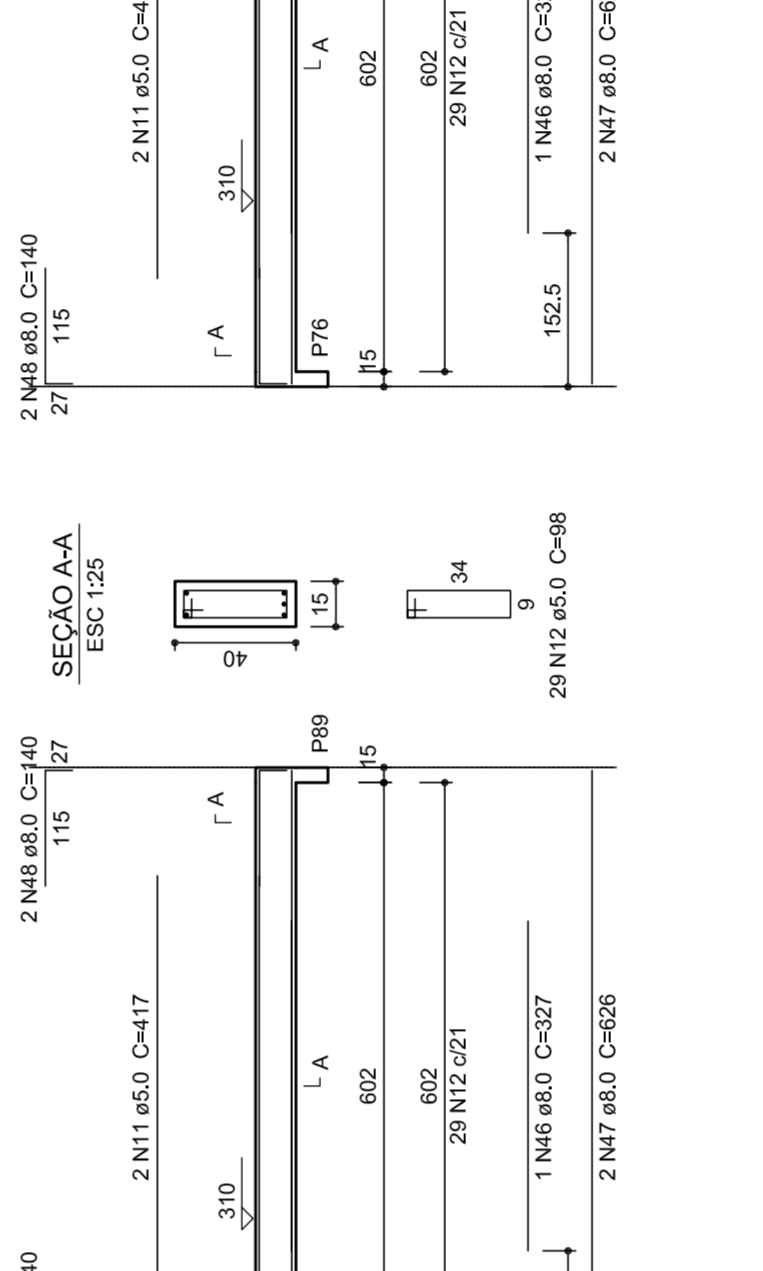
V122
ESC: 1:75



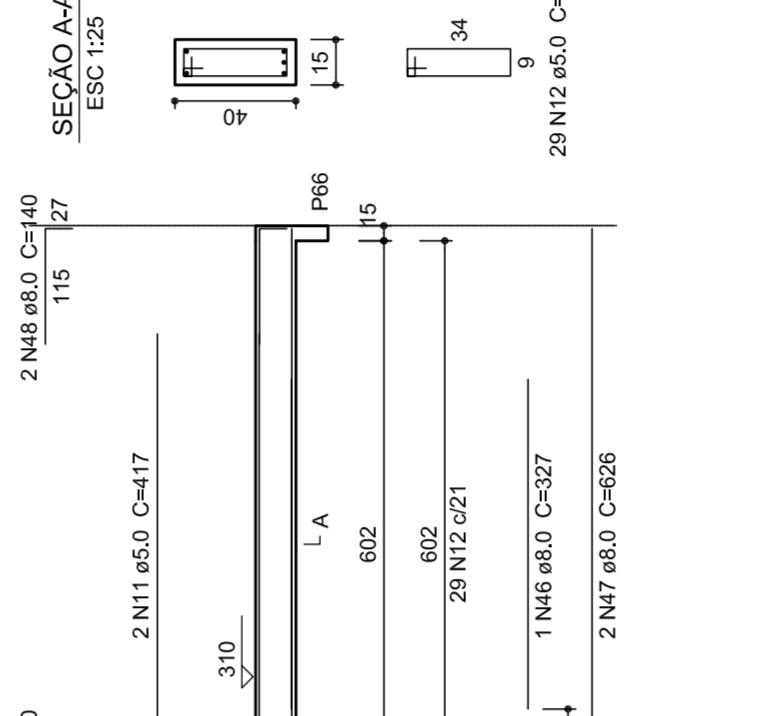
V124
ESC: 1:75



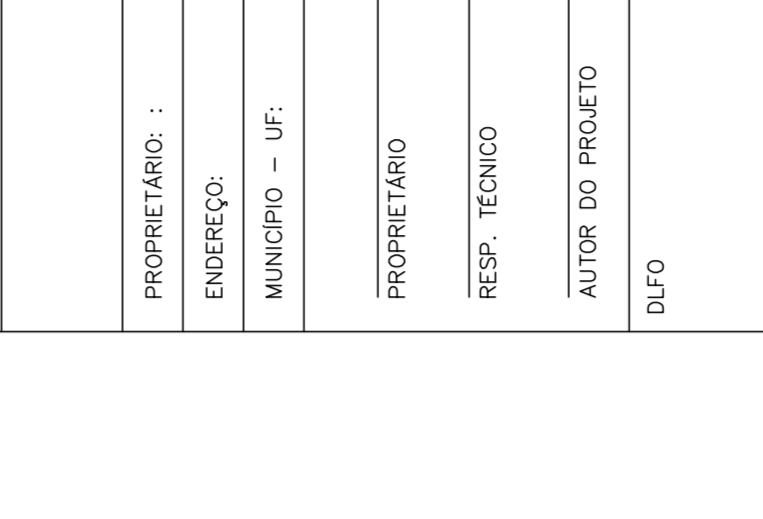
V125
ESC: 1:75



V126
ESC: 1:75



V127
ESC: 1:75



GOVERNO FEDERAL
BRASIL
PATRIAMINA EDUCADORA

FNDE
FUNDO NACIONAL DE DESENVOLVIMENTO DO EDUCAR

Ministério da Educação

PROJETO PADRÃO - FNDE

PROPRIETÁRIO: _____

ENDEREÇO: _____

MUNICÍPIO - UF: _____

PROPRIETÁRIO _____

RESP. TÉCNICO _____

CREA _____

AUTOR DO PROJETO _____ CAU _____

DUFO _____

CREA _____

RA _____

OBSERVAÇÕES: _____

PROJETO EXECUTIVO

PROGRAMA PROINFÂNCIA - PROJETO TIPO 1

PROJETO DE ESTRUTURA

VIGAS NÍVEL 310

SCV

REVISÃO: R.00

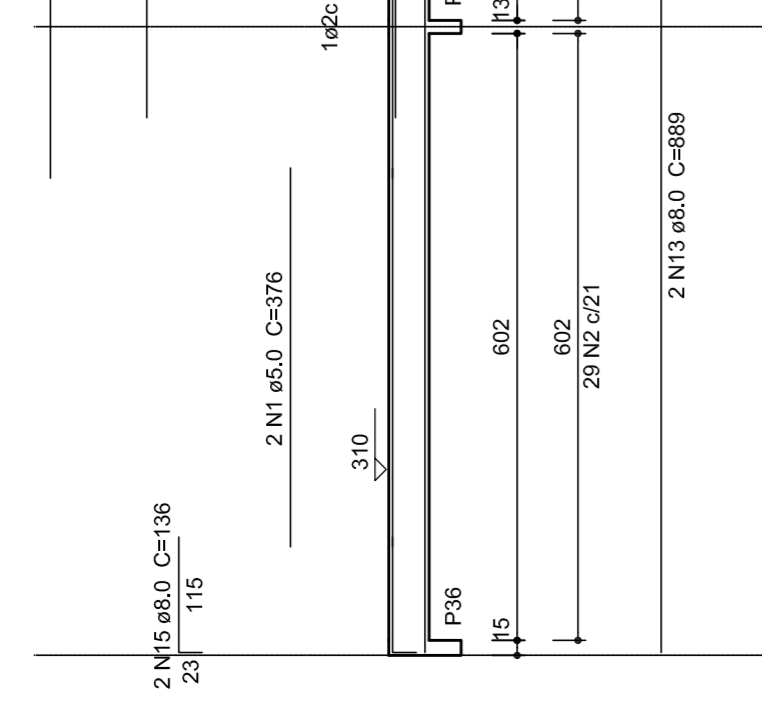
ESCALA: 1:50

DATA: 08/2015

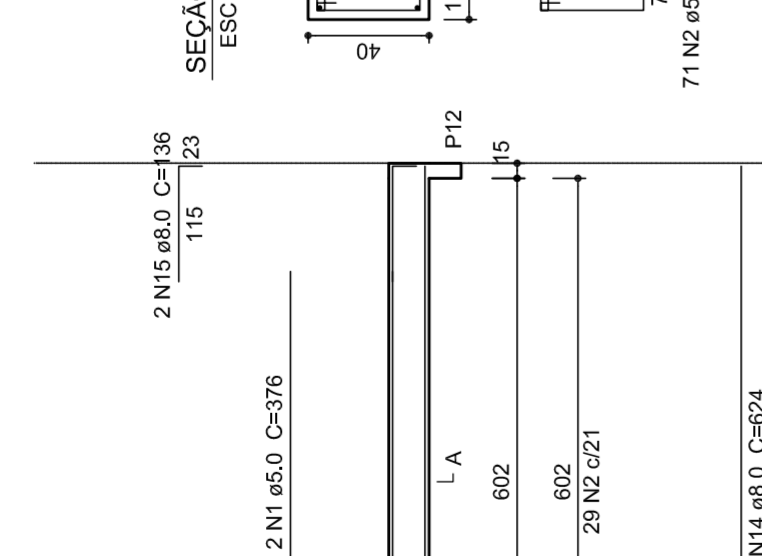
FRANCHA

16/16

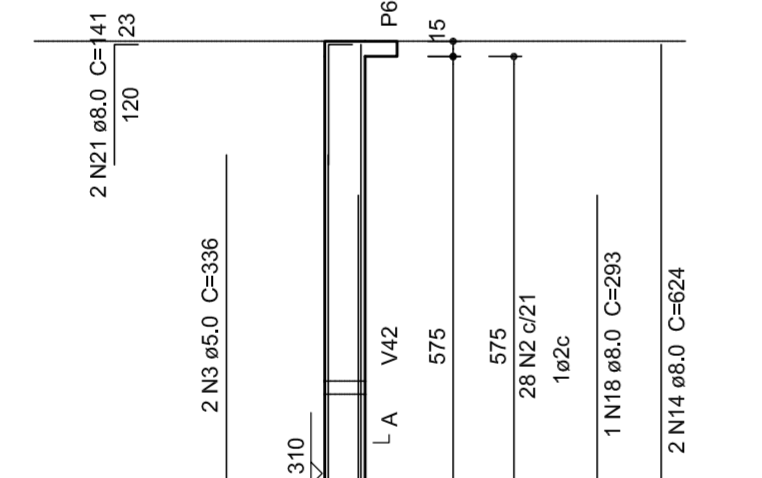
V127
ESC: 1:75



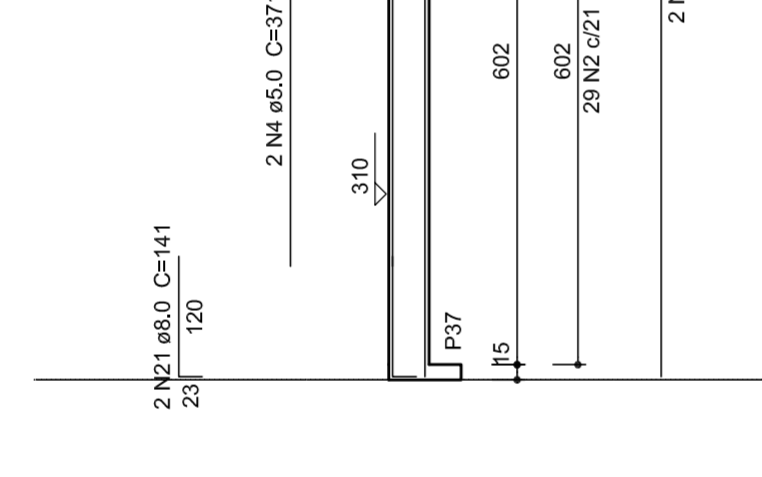
V128
ESC: 1:75



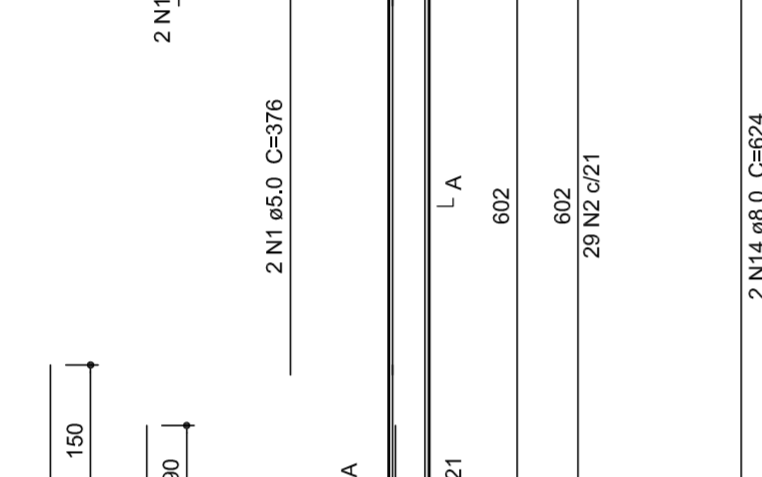
V129
ESC: 1:75



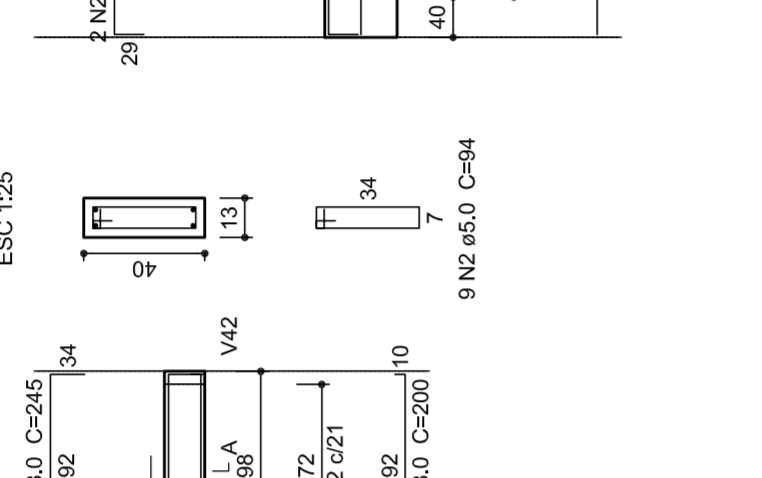
V133
ESC: 1:75



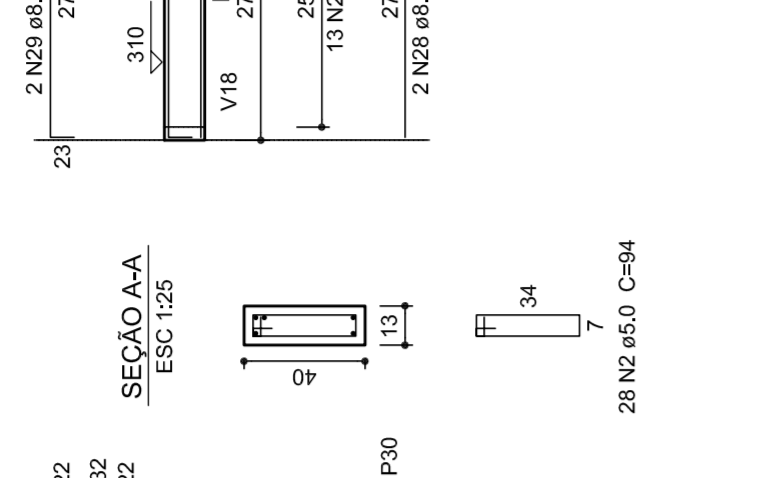
V134
ESC: 1:75



V137
ESC: 1:75



V138
ESC: 1:75



V141
ESC: 1:75

