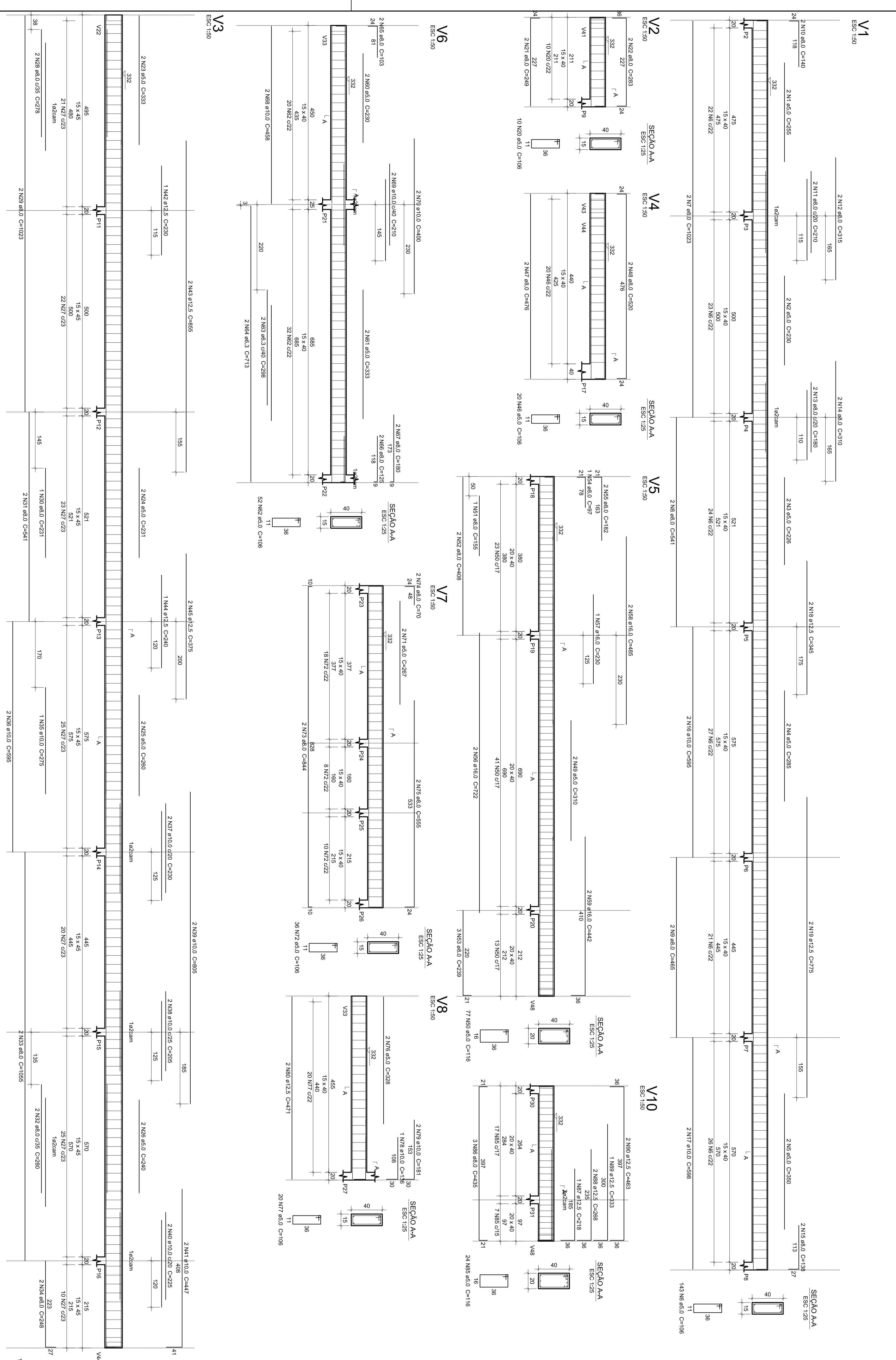


ELEMENTO	ACO	N	DIAM	QUANT	UNID	C.TOTAL
			(mm)	(Rebar)	(cm)	(cm)
V1	CA60	1	5,0	2	255	510
CA60	2	5,0	2	230	460	
CA60	3	5,0	2	228	456	
CA60	4	5,0	2	228	456	
CA60	5	5,0	2	350	700	
CA60	6	5,0	143	106	15158	
CA60	7	8,0	2	1023	2046	
CA60	8	8,0	2	541	1082	
CA60	9	8,0	2	140	280	
CA60	10	8,0	2	140	280	
CA60	11	8,0	2	210	420	
CA60	12	8,0	2	315	630	
CA60	13	8,0	2	30	60	
CA60	14	8,0	2	315	630	
CA60	15	8,0	2	138	276	
CA60	16	8,0	2	595	1190	
CA60	17	10,0	2	598	1196	
CA60	18	10,0	2	775	1550	
CA60	19	12,5	2	106	212	
CA60	20	5,0	10	106	1060	
CA60	21	8,0	2	249	498	
CA60	22	8,0	2	283	566	
CA60	23	8,0	2	231	462	
CA60	24	5,0	2	280	560	
CA60	25	5,0	2	280	560	
CA60	26	5,0	2	240	480	
CA60	27	5,0	46	116	18996	
CA60	28	5,0	2	250	500	
CA60	29	8,0	2	1023	2046	
CA60	30	8,0	1	231	231	
CA60	31	8,0	2	541	1082	
CA60	32	8,0	2	280	560	
CA60	33	8,0	2	249	498	
CA60	34	8,0	2	248	496	
CA60	35	10,0	1	275	275	
CA60	36	10,0	2	595	1190	
CA60	37	10,0	2	250	500	
CA60	38	10,0	2	250	500	
CA60	39	10,0	2	805	1610	
CA60	40	10,0	2	225	450	
CA60	41	10,0	2	447	894	
CA60	42	12,5	2	855	1710	
CA60	43	12,5	1	240	240	
CA60	44	12,5	1	240	240	
CA60	45	12,5	2	375	750	
CA60	46	5,0	20	108	2160	
CA60	47	5,0	2	520	1040	
CA60	48	5,0	2	310	620	
CA60	49	5,0	2	310	620	
CA60	50	5,0	77	185	18992	
CA60	51	8,0	1	185	185	
CA60	52	8,0	1	185	185	
CA60	53	8,0	3	239	717	
CA60	54	8,0	1	97	97	
CA60	55	8,0	2	182	364	
CA60	56	8,0	2	722	1444	
CA60	57	16,0	1	445	445	
CA60	58	16,0	2	485	970	
CA60	59	16,0	2	442	884	
CA60	60	5,0	2	230	460	
CA60	61	5,0	2	333	666	
CA60	62	5,0	2	298	596	
CA60	63	6,3	2	713	1426	
CA60	64	6,3	2	103	206	
CA60	65	8,0	2	125	250	
CA60	66	8,0	2	458	916	
CA60	68	10,0	2	210	420	
CA60	69	10,0	2	400	800	
CA60	70	10,0	2	207	414	
CA60	71	5,0	36	120	3600	
CA60	72	8,0	2	844	1688	
CA60	73	8,0	2	70	140	
CA60	74	8,0	2	555	1110	
CA60	75	8,0	2	108	216	
CA60	76	8,0	20	108	2160	
CA60	77	5,0	1	136	136	
CA60	78	10,0	1	136	136	
CA60	79	10,0	2	471	942	
CA60	80	12,5	2	778	1552	
CA60	82	10,0	2	778	1552	
CA60	83	16,0	2	480	960	
CA60	84	16,0	2	728	1452	
CA60	85	5,0	24	116	2784	
CA60	86	5,0	2	180	360	
CA60	87	12,5	1	218	218	
CA60	88	12,5	1	333	333	
CA60	89	12,5	2	288	576	
CA60	90	12,5	2	463	926	
CA60	91	12,5	2	463	926	
CA60	92	5,0	4	105	2544	
CA60	93	10,0	1	303	303	
CA60	94	10,0	2	551	1102	
CA60	95	10,0	2	180	360	
CA60	96	10,0	2	180	360	
CA60	97	15,0	16	105	1998	
CA60	98	8,0	2	446	892	
CA60	99	8,0	2	446	892	
CA60	100	10,0	1	137	137	

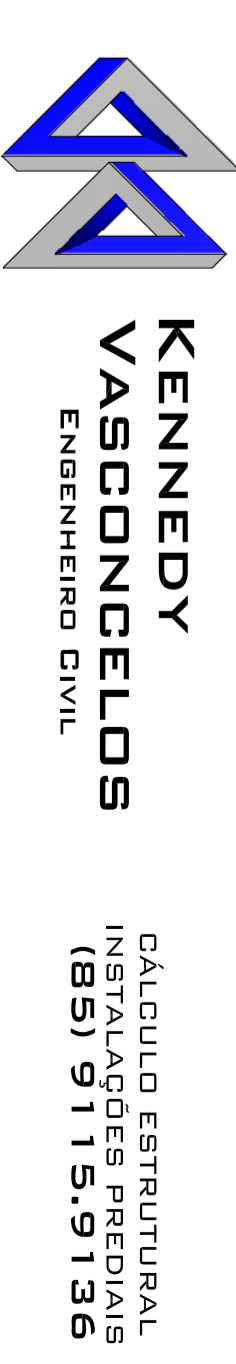
**Resumo do aço**

ACO	DIAM	C.TOTAL	FESO + 10 %
(mm)	(m)	(kg)	(kg)
CA50	6,3	20,3	5,4
CA50	8,0	248,9	10,8
CA50	10,0	12,5	81,3
CA50	12,5	59,4	86,1
CA50	16,0	5,4	103,1
CA50	16,0	769,3	127
FESO TOTAL	(kg)		
CA50	404,5		
CA60	127		

Volume do concreto (C20) = 8,59 m³  
Area de forma = 138,77 m²



**CALCULO ESTRUTURAL**



**KENNEDY VASCONCELOS**  
ENGENHEIRO CIVIL  
CALCULO ESTRUTURAL  
INSTALACOES PREDIAIS  
(85) 9115-9136

**PREFEITURA MUNICIPAL DE SOBRAL**  
**UNID. BASICA DE SAUDE - CONJ. NOVA CAICARA - SOBRAL - CE**

PROJETO DE: **14/20**  
PROJETA: **Fº KENNEDY M. VASCONCELOS**  
ENGENHEIRO CIVIL - CREIA 06129680  
REVISOR: **VIGAS DA COBERTURA**  
CONFERTEUR: **ENGENHEIRO CIVIL**  
DATA DE EMISSAO: **14/20**

FORMATAO: A1 - INTERNO 868 x 574 mm  
MARGEM: F-41-D00/DV6 / MARGEM A-100/DV6