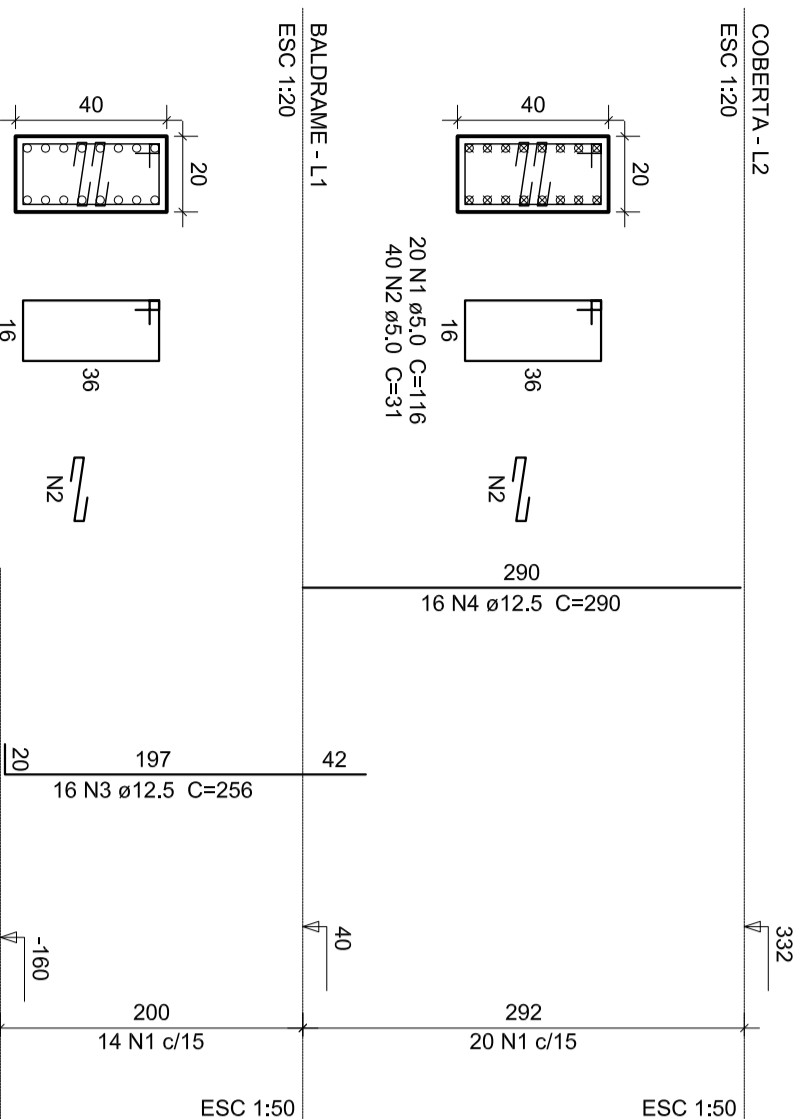
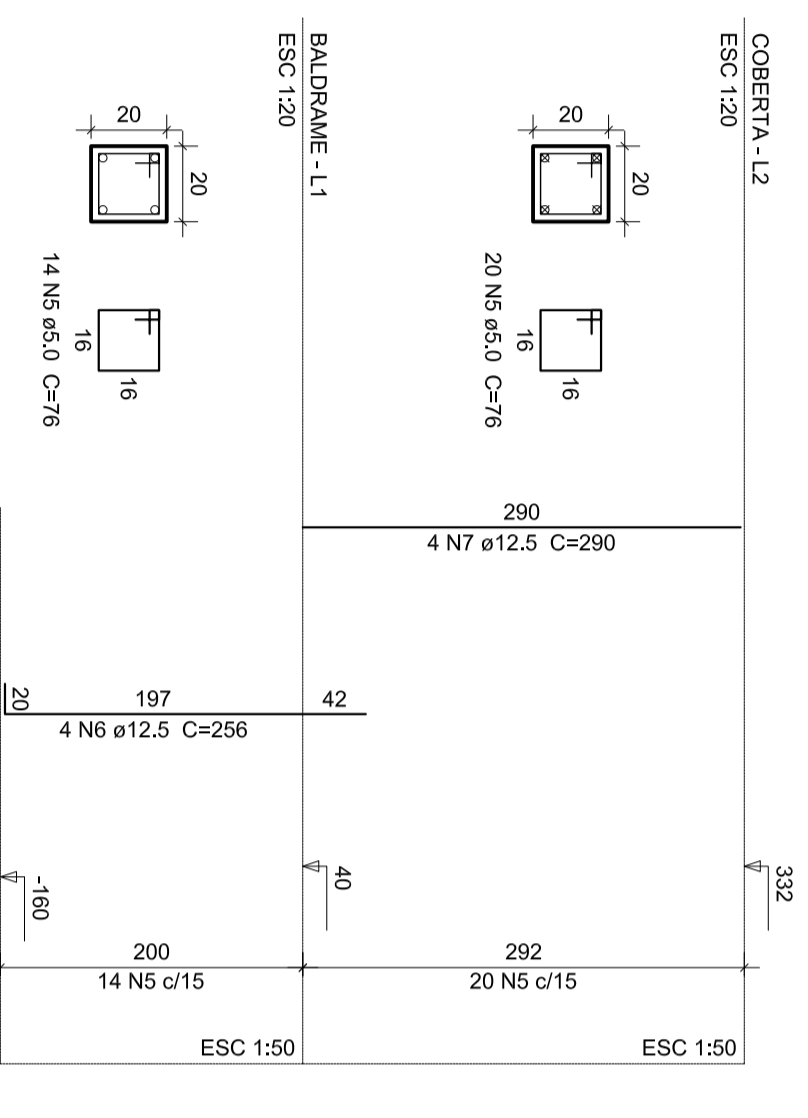


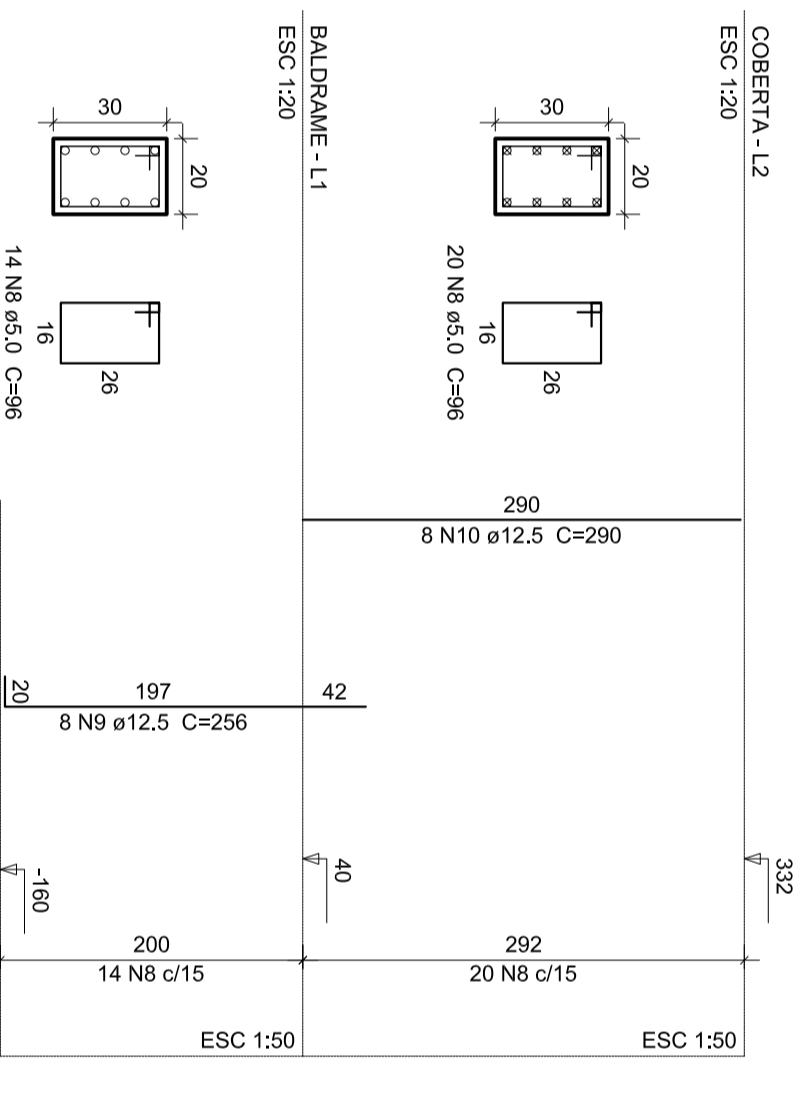
P17



P18



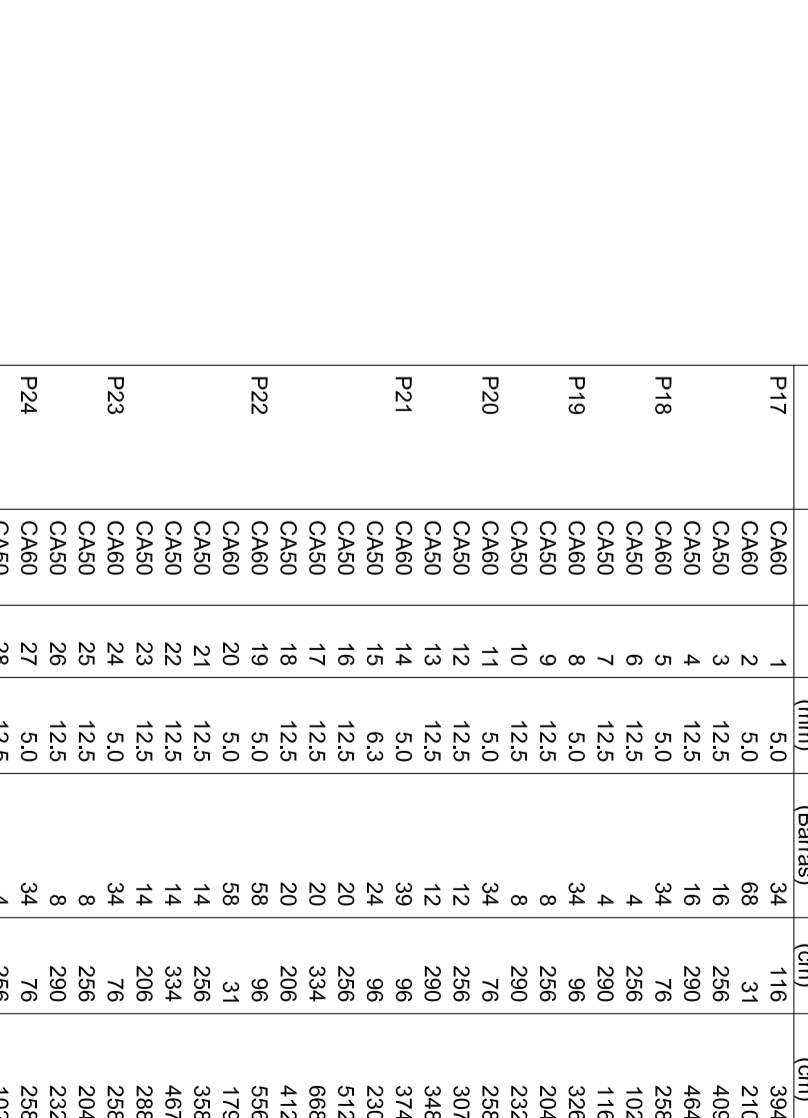
P19



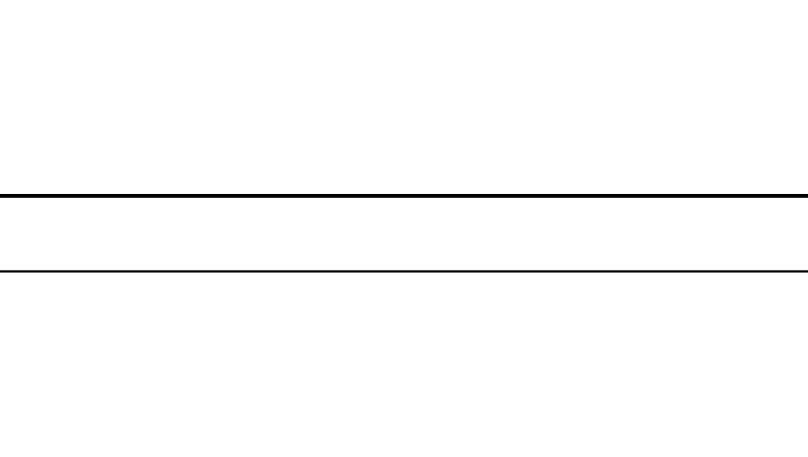
P20



P21



P22



Relação do aço

ELEMENTO	ACO	N	DIAM	QUANT	UNIF	C.TOTAL
	(mm)		(mm)	(Barra)	(cm)	(cm)
P17	CA60	2	5,0	68	116	3844
	CA50	3	12,5	16	268	2108
P18	CA60	3	5,0	11	228	4086
	CA50	5	5,0	34	78	2584
P19	CA60	7	12,5	4	298	1024
	CA50	6	12,5	4	286	1160
P20	CA60	8	12,5	3	298	1024
	CA50	10	12,5	8	280	2320
P21	CA60	12	12,5	12	268	3072
	CA50	14	5,0	32	374	2304
P22	CA60	15	6,3	24	86	2304
	CA50	19	5,0	58	86	5588
P23	CA60	20	5,0	58	31	1788
	CA50	22	12,5	14	258	3584
P24	CA60	21	12,5	14	258	3584
	CA50	24	5,0	34	78	2584
P25	CA60	25	12,5	8	298	2048
	CA50	28	12,5	8	298	2048
P26	CA60	27	5,0	34	78	2584
	CA50	32	12,5	4	298	1024
P27	CA60	31	12,5	4	298	1024
	CA50	35	12,5	4	298	1024
P28	CA60	36	5,0	48	78	3848
	CA50	38	12,5	4	298	1160
P29	CA60	39	12,5	4	208	824
	CA50	40	5,0	50	98	4800
P30	CA60	41	5,0	31	1650	5160
	CA50	43	12,5	16	538	5584
P31	CA60	44	12,5	16	538	5584
	CA50	45	5,0	34	78	2584
P32	CA60	46	12,5	4	212	848
	CA50	49	12,5	4	290	1160
P33	CA60	49	12,5	4	290	1160
	CA50	54	12,5	8	298	2320
P34	CA60	55	5,0	34	78	2584
	CA50	57	12,5	4	298	1024

Resumo do aço

ACO	DIAM	C.TOTAL	PESO = 10 %
(mm)	(cm)	(kg)	(kg)
CA60	6,3	23,1	6,2
CA50	12,5	879,6	922,1
CA60	5,0	962,7	95,4
PESO TOTAL			954
CA60	938,3		
CA50	95,4		

Volume de concreto (C=30) = 4,23 m³
 Área de forma = 77,08 m²

P25

P26

P27

P28

P29

P30

Calculo Estrutural

KENNEDY VASCONCELOS
 ENGENHEIRO CIVIL

PREFEITURA MUNICIPAL DE SOBRAL
 INSTALAÇÕES PREDIAIS
 (85) 9115.9136

CALCULO ESTRUTURAL

PROJETO DE: **UNID. BASICA DE SAUDE - CONJ. NOVA CAICARA - SOBRAL - CE**

PROJETO DE: **06/20**