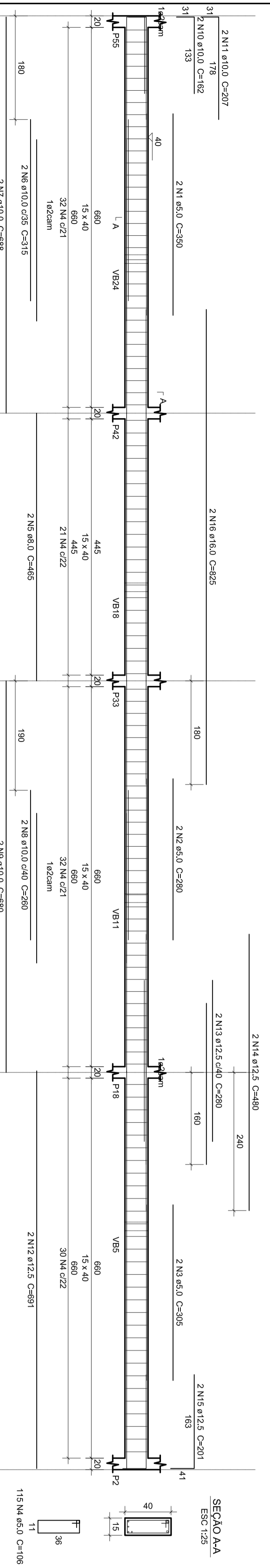
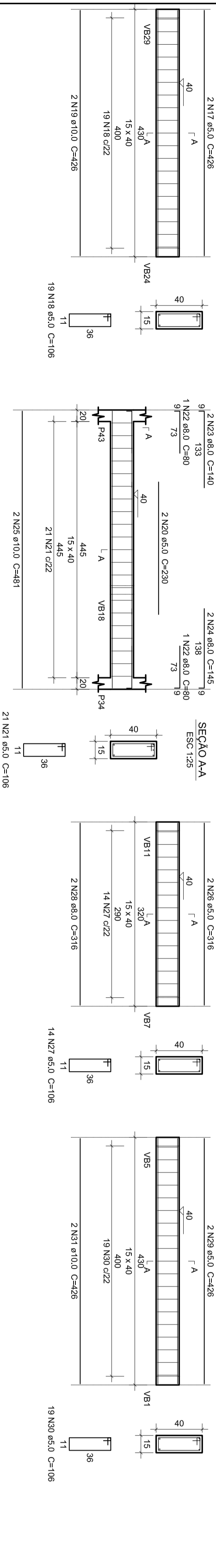


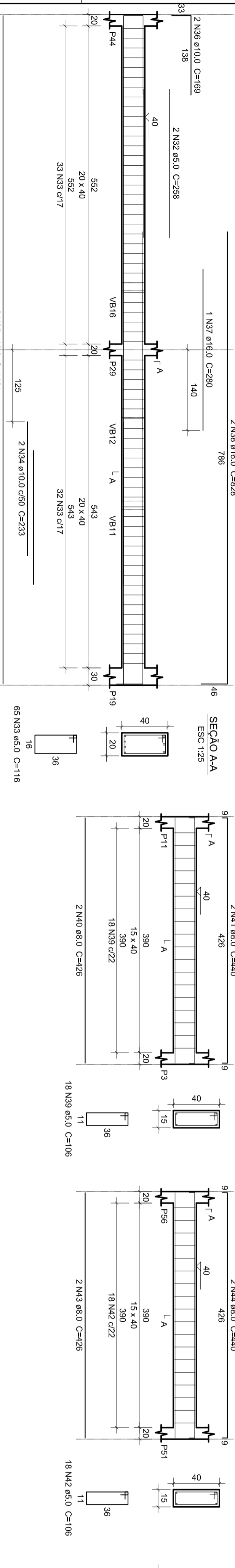
VB30



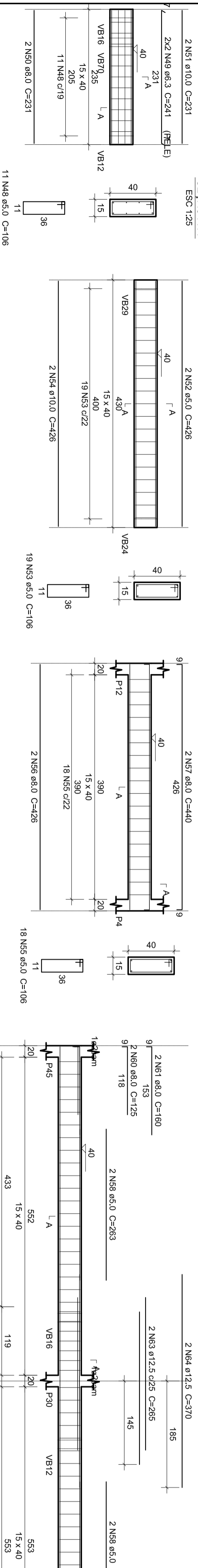
VB31



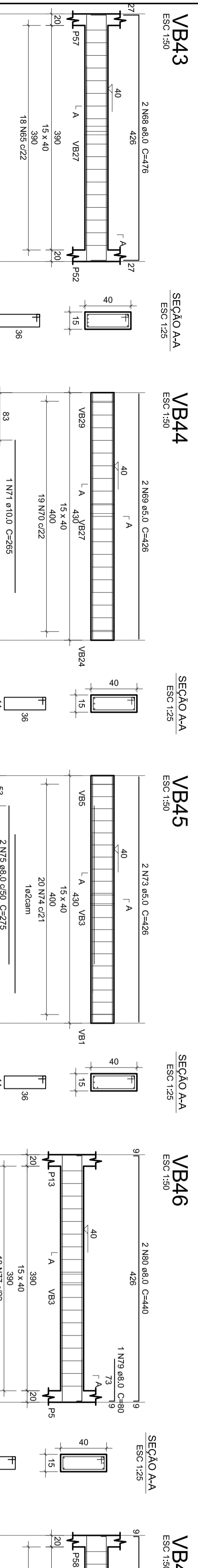
VB35



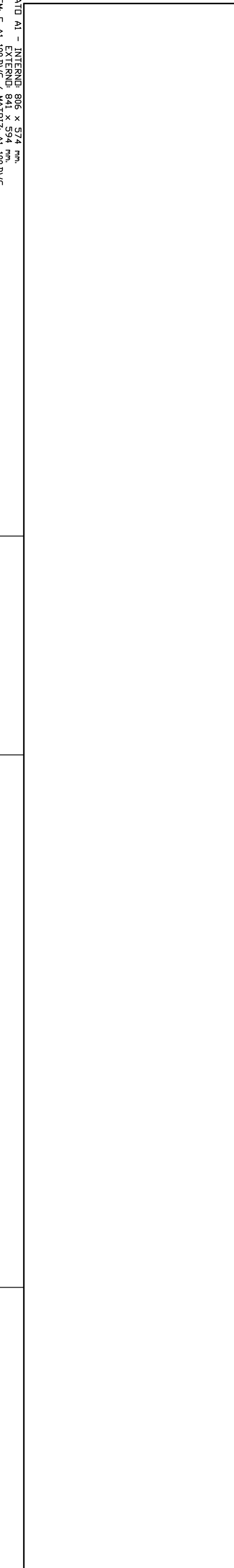
VB39



VB40



VB43



Relação do aço

ELEMENTO	ACO	N	DIAM	QUANT	UNF	C.TOTAL
	(mm)		(mm)	(Barra)	(cm)	(cm)
VB30	CA60	1	5,0	2	280	700
	CA60	2	5,0	2	280	700
	CA60	3	5,0	2	280	700
	CA60	4	5,0	2	280	700
	CA60	5	8,0	11	280	1510
	CA60	6	8,0	2	465	930
	CA60	7	10,0	2	315	630
	CA60	8	10,0	2	668	1336
	CA60	9	10,0	2	680	1360
	CA60	10	10,0	2	680	1360
	CA60	11	10,0	2	162	324
	CA60	12	12,5	2	691	1382
	CA60	13	12,5	2	480	960
	CA60	14	12,5	2	480	960
	CA60	15	12,5	2	201	402
	CA60	16	18,0	2	825	1650
	CA60	17	5,0	2	428	856
	CA60	18	5,0	2	428	856
	CA60	19	10,0	2	239	478
	CA60	20	20,0	2	239	478
	CA60	21	5,0	2	108	216
	CA60	22	8,0	2	180	360
	CA60	23	8,0	2	145	290
	CA60	24	8,0	2	145	290
	CA60	25	10,0	2	481	962
	CA60	26	26,0	2	316	632
	CA60	27	5,0	14	108	1444
	CA60	28	5,0	14	108	1444
	CA60	29	5,0	2	428	856
	CA60	30	5,0	19	108	2014
	CA60	31	10,0	2	428	856
	CA60	32	5,0	6	228	1164
	CA60	33	5,0	6	171	726
	CA60	34	10,0	2	233	466
	CA60	35	10,0	2	1161	2322
	CA60	36	10,0	2	168	336
	CA60	37	16,0	2	820	1640
	CA60	38	16,0	2	820	1640
	CA60	39	5,0	18	108	1890
	CA60	40	8,0	2	428	856
	CA60	41	8,0	2	440	880
	CA60	42	8,0	2	440	880
	CA60	43	8,0	2	428	856
	CA60	44	8,0	2	440	880
	CA60	45	5,0	2	231	462
	CA60	46	5,0	10	108	1080
	CA60	47	5,0	2	428	856
	CA60	48	5,0	2	428	856
	CA60	49	8,0	4	241	964
	CA60	50	8,0	4	241	964
	CA60	51	10,0	2	231	462
	CA60	52	10,0	2	231	462
	CA60	53	5,0	19	108	2014
	CA60	54	10,0	2	428	856
	CA60	55	5,0	18	108	1890
	CA60	56	8,0	2	428	856
	CA60	57	8,0	2	428	856
	CA60	58	5,0	4	263	1052
	CA60	59	5,0	53	108	5618
	CA60	60	8,0	4	125	500
	CA60	61	8,0	4	160	640
	CA60	62	8,0	2	230	460
	CA60	63	12,5	2	265	530
	CA60	64	12,5	18	108	1908
	CA60	65	5,0	2	230	460
	CA60	66	6,3	2	428	856
	CA60	67	6,3	2	428	856
	CA60	68	8,0	2	475	950
	CA60	69	8,0	2	428	856
	CA60	70	5,0	19	108	2014
	CA60	71	5,0	2	428	856
	CA60	72	10,0	2	428	856
	CA60	73	5,0	20	108	2160
	CA60	74	5,0	2	275	550
	CA60	75	8,0	2	428	856
	CA60	76	8,0	2	428	856
	CA60	77	5,0	18	108	1908
	CA60	78	8,0	2	428	856
	CA60	79	8,0	2	428	856
	CA60	80	8,0	2	440	880
	CA60	81	8,0	2	440	880
	CA60	82	8,0	2	428	856
	CA60	83	8,0	2	440	880

Resumo do aço

ACO	DIAM	C.TOTAL	PESO + 10%
(kg)	(mm)	(m)	(kg)
CA60	6,3	224	67
CA60	10,0	1517	1029
CA60	12,5	45,6	48,5
CA60	18,0	35,9	62,3
CA60	5,0	621,6	105,4
TOTAL			
CA60		2867	
CA60		105,4	

Volume de concreto (C-30) = 6,75 m³
 Área de forma = 103,75 m²

CALCULO ESTRUTURAL



KENNEDY VASCONCELOS ENGENHEIRO CIVIL
 CALCULO ESTRUTURAL
 INSTALAÇÕES PREDIAIS
 (85) 9115.9136

PREFEITURA MUNICIPAL DE SOBRAL
UNID. BASICA DE SAÚDE - CONJ. NOVA CALÇADA - SOBRAL - CE

PROJETO DE: Fº KENNEDY M. VASCONCELOS
 ENGENHEIRO CIVIL - CREIA/CE128680
 DATA: 02/2024

1/120